

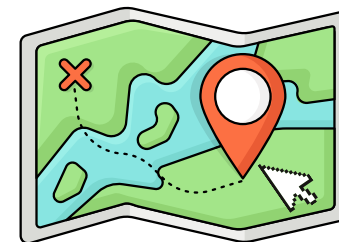


GIS



What is GIS?

Geographic Information System (GIS) is a technology that helps people make better decisions by displaying data on maps to show things like land use, roads, and wildlife habitats. By layering this data, GIS reveals how different features connect and interact. NJDEP uses GIS to map New Jersey's environment, aiding officials and the public in making informed decisions about protecting nature and managing resources.

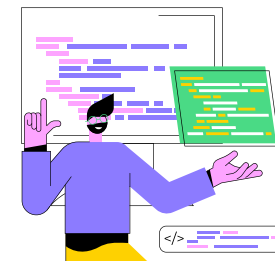


What does DEP's Bureau of GIS do?

The Bureau of Geographic Information Systems (BGIS) improves environmental decisions in New Jersey by creating and sharing online maps, downloadable data, training employees and the public, and providing ongoing user support. These tools support workflows like field data collection and real-time updates for managers. The data helps environmental organizations, developers, and industries like forestry and agriculture plan land use, track resources, and assess environmental impacts.

Why is GIS Important?

NJDEP's use of GIS is important for keeping the environment safe and ensuring healthier communities by providing clear visual data on things like water quality, wildlife areas, and flood risks. GIS makes it easy to analyze complex issues graphically, helping people understand and address environmental challenges. The public can use this data to make informed decisions about where to live, build, or engage in local conservation efforts.



NEW JERSEY
DEPARTMENT OF
ENVIRONMENTAL
PROTECTION

