



[A]

# Welcome to the NJDEP Stakeholders Meeting for

## *Amendments to N.J.A.C. 7:26A-1.1 and 1.4*

▶ November 10, 2020

❖ 1:00 to 3:30 PM



[B]



[C]

## Opening Remarks - Why Amendments to Rules are Necessary

- ▶ Minimize potential adverse environmental Impacts from non-compliance
  - ❖ Limits on storage amounts and durations
- ▶ Better enforceability
  - ❖ Improved record keeping
  - ❖ Increase/improved reporting requirements
- ▶ Ensure better coordination with local and county officials
  - ❖ Optimal management and enforcement of activities
- ▶ Clean-Up
  - ❖ Deleting exemptions that are not necessary or problematic
  - ❖ Combine like activities
  - ❖ Need for additional new exemptions
- ▶ Rules sunset December 3, 2022
  - ❖ Rulemaking is a multi-year endeavor

# Introductions - NJDEP Rule Team

- ▶ **Assistant Commissioner's Office, Site Remediation & Waste Management**
  - ❖ Judith Andrejko, Esq., Regulatory Officer / Facilitator
- ▶ **Bureau of Recycling & Hazardous Waste Mgt.**
  - ❖ Karen Kloo, Bureau Chief
  - ❖ Zafar Billah, Section Chief
  - ❖ Michael Trocchia, Engineer & Co-Exemption Coordinator
  - ❖ Alexander Sadat, Engineer & Exemption Coordinator
- ▶ **Bureau of Solid Waste Compliance & Enforcement**
  - ❖ Thomas Farrell, Bureau Chief
  - ❖ Paul Smith, Case Manager



# Introduction – Welcome Stakeholders



[D]

- ▶ Most questions will be covered through the "Polling" Functionality
- ▶ Please type your name and affiliation before making a comment In the Question and Answer section.
- ▶ To ensure accurate notes, please type in full and complete sentences.
- ▶ Please make your points and questions as concise and clear as possible.

# Goals of the Meeting

- ▶ Solicit Input
- ▶ Encourage Recycling
- ▶ Why we grouped them together



[E]

# Agenda Outline

## NEW Exclusion §1.1f

- Food Waste Composting
- Micro-Scale composting
- Main Topics: Limitations, Storage, and Odors

## NEW Exemption #19

- In-Vessel Food Waste Composting
- Volume and Time and other Controls
- Main Topics: Types of Vessels & Methods of Storage, Limitations, and Adherence to Manufacturers Specifications

## NEW Exemption #20

- Outdoor Food Waste Composting
- Food Waste composting that is conducted in an outdoor setting to max. useable area
- Main Topics: Operations, Buffers, & Bulking Ag.

## NEW Exemption #21

- Indoor Food Waste Composting
- Indoor operations, engineering controls, and ease of entry
- Main Topics: Limitations and Building Design

# General Disclaimer for this Presentation:

- ▶ *Any pictures or trade names of equipment, companies or services should not be construed to indicate an endorsement by the New Jersey Department of Environmental Protection of any product or service derived from same.*
- ▶ *The information within this presentation is slated to facilitate discussions on various existing and potential regulatory mechanisms. No final decision regarding this information is expressed or implied.*

# POTENTIAL NEW 7:26A-1.1(f) EXCLUSION OF MICRO-SCALE FOOD WASTE COMPOSTING



## Main Topics for Today

1. Exclusion Explained
2. Micro-scale Food Waste Composting
3. Why Exclude Micro-scale?
4. Who Would Benefit?
5. Limitations



[F]



# POTENTIAL NEW FOOD WASTE EXCLUSION DETAILS – EXPLAINED (PART 1)

- ▶ N.J.A.C 7:26A-1.1 Excludes certain activities from the scope of the recycling rules
- ▶ 7:26A-1.1(e) excludes composting and on-site use of farm feedstocks



[G]

# POTENTIAL NEW FOOD WASTE EXCLUSION DETAILS – EXPLAINED (PART 2)

- ▶ Proposal will add paragraph 1.1(f) to exclude micro-scale food waste composting
- ▶ Only excludes from the Solid Waste regulations, other programs area regulations *may apply*.



[H]

# POTENTIAL NEW FOOD WASTE EXCLUSION DETAILS: SCALE

- Smallest quantities of food waste
- Lowest throughput capacities



[1]



# POTENTIAL NEW FOOD WASTE EXCLUSION: WHY EXCLUDE MICRO-SCALE?

- Encourage urban residential community to source separate and compost food waste
- Impact to the environment and neighboring properties would be minimal



[J]



# POTENTIAL NEW FOOD WASTE EXCLUSION: WHO WOULD BENEFIT?

- Community Gardens
- Multi-family dwellings in urban areas
- Non-profit groups such as boy scouts



# POTENTIAL NEW FOOD WASTE EXCLUSION: LIMITATIONS – PART 1

- Only vegetative food waste allowed
- Accepts food waste generated by residents only
- Compost operations conducted within the community



[L]



# POTENTIAL NEW FOOD WASTE EXCLUSIONS: LIMITATIONS – PART 2

- Quality control of incoming wastes
- Record keeping required.
- Compost operation conducted on municipality owned land



[M]

# POTENTIAL NEW FOOD WASTE EXCLUSIONS: LIMITATIONS – PART 3

- Odor control and stormwater management
- Composting operations must be conducted within a container





# POTENTIAL NEW FOOD WASTE EXCLUSION: QUESTIONS

## – PART 1

- ▶ Question #1: “Is there a need for this exclusion?”
  - ❖ Answers: (A) “Yes;” (B) “No”
- ▶ Question #2: “Should it be limited to micro-scale community composting only?”
  - ❖ Answers: (A) “Yes;” (B) “No”
- ▶ Question #3: “What should be the throughput limitation?”
  - ❖ Answers: (A) “1 cubic yard/week;” (B) “2 cubic yards/week;” (C) “3 cubic yards/week;” (D) “Other (Type in)”

## POTENTIAL NEW FOOD WASTE EXCLUSION: QUESTIONS – PART 2

- ▶ Question #4: “Should waste from small businesses/schools in the community be allowed?”
  - ❖ Answers: (A) “Yes;” (B) “No”
- ▶ Question #5: “Should a condition be added to shut down the operations in the event of successive verified odor complaints?”
  - ❖ Answers: (A) “Yes;” (B) “No;” (C) “Other (Type in)”
- ▶ Question #6: “Other Comments?”
  - ❖ Answer: (*Type-in*)

# POTENTIAL NEW EXEMPTION #19:

## IN-VESSEL FOOD WASTE COMPOSTING



# POTENTIAL NEW EXEMPTION #19: IN-VESSEL FOOD WASTE COMPOSTING | COMPARATIVE FEATURES

- ▶ EPA Reference: <https://www.epa.gov/sustainable-management-food/types-composting-and-understanding-process#invessel>



# POTENTIAL NEW EXEMPTION #19: IN-VESSEL FOOD WASTE COMPOSTING | COMPARATIVE FEATURES

- ▶ Operational Controls
- ▶ Odors & Leachate
- ▶ Expenses
- ▶ Compact



[Q]

# POTENTIAL NEW EXEMPTION #19: IN-VESSEL FOOD WASTE COMPOSTING | TRAINING



- ▶ Operator certification required
- ▶ Some organizations that offer training:
  - ❖ US Composting Council
  - ❖ Rutgers University
  - ❖ County Ag/Resource Mgmt.



# POTENTIAL NEW EXEMPTION #19: IN-VESSEL FOOD WASTE COMPOSTING | BUFFERS



[S]

# POTENTIAL NEW EXEMPTION #19: IN-VESSEL **FOOD** WASTE COMPOSTING | PHYSICAL CONTAMINANTS



- ▶ Non-compostable waste removal
- ▶ Proper management
- ▶ Performance is key

[T]



# POTENTIAL NEW EXEMPTION #19: IN-VESSEL FOOD WASTE COMPOSTING | CONTINGENCIES



- ▶ Timing of material Introduction into Vessel
- ▶ Material Storage
- ▶ Storm Water & Air permits

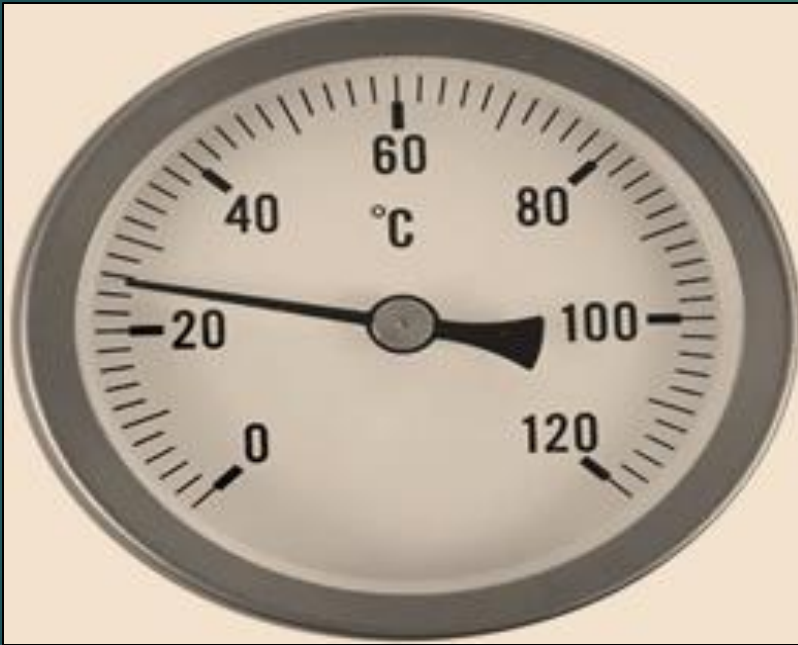
[U]

# POTENTIAL NEW EXEMPTION #19: IN-VESSEL **FOOD** WASTE COMPOSTING | PROCESSING LIMITATIONS



- ▶ Material Reception
- ▶ Food types
- ▶ Pile heights

# POTENTIAL NEW EXEMPTION #19: IN-VESSEL **FOOD** WASTE COMPOSTING | PATHOGEN DESTRUCTION



[W]

- ▶ Temperature Control
- ▶ Daily Records

# POTENTIAL NEW EXEMPTION #19: IN-VESSEL FOOD WASTE COMPOSTING | STORAGE LIMITATIONS



- ▶ Bulking Agent Volume
- ▶ Finished Compost Volume
- ▶ Managed to minimize runoff



# POTENTIAL NEW EXEMPTION #19: IN-VESSEL FOOD WASTE COMPOSTING | SITE MAINTENANCE



- ▶ Manage operations properly
- ▶ No ruts & ponding

# POTENTIAL NEW EXEMPTION 19: IN-VESSEL FOOD WASTE COMPOSTING | DAILY RECORD KEEPING



## ► Using DEP Form:

- ❖ Volume in CY of both incoming And outgoing materials and materials stored on-site
- ❖ Core in-Vessel temperatures
- ❖ Records kept for 3 years

[Z]

# POTENTIAL NEW EXEMPTION #19: IN-VESSEL FOOD WASTE COMPOSTING | QUESTIONS

- ▶ Question #7: What should the minimum buffer distance be between active composting operations and the property line?
  - ❖ (A) “50 ft.,” (B) “100 ft.,” (C) “150 ft.,” (D) “200 ft.,” (E) “Other (*Type-in*)”
- ▶ Question #8: Should dairy and meat SSFW be incorporated into in-vessel composting?
  - ❖ (A) “Yes,” (B) “No,” (C) “Other (*Type-in*)”



# POTENTIAL NEW EXEMPTION #19: IN-VESSEL FOOD WASTE COMPOSTING | QUESTIONS - continued

▶ Question #9: What should the volumetric limit of SSFW received be per year?

❖ (A) “1,000 CY;” (B) “2,000 CY;” (C) “3,000 CY;” (D) “Other (*Type-in*)”

▶ Question #10: What should the volumetric limit of bulking agent on-site be at any time?

❖ (A) “1,000 CY;” (B) “2,000 CY;” (C) “3,000 CY;” (D) “Other (*Type-in*)”

# POTENTIAL NEW EXEMPTION #19: IN-VESSEL FOOD WASTE COMPOSTING | QUESTIONS –continued

- ▶ Question #11: What should be the limit of the volume of finished compost stored on-site at any one time?
  - ❖ (A) “1,000 CY;” (B) “2,000 CY;” (C) “3,000 CY;” (D) “Other (*Type-in*)”
- ▶ Question #12: Should there be any additional training requirements other than specified in this presentation?
  - ❖ “Open-Ended (*Type-in*)”

# POTENTIAL NEW EXEMPTION #19: IN-VESSEL FOOD WASTE COMPOSTING | QUESTIONS – FINAL

- ▶ Question #13: Besides temperature, what other measurements should be taken to determine effective composting is occurring or has occurred and how often should such measurements be taken?
  - ❖ (A) “Oxygen at a frequency of *(Type-in)*;”
  - ❖ (B) “Pathogens at a frequency of *(Type-in)*;”
  - ❖ (C) “Lead at a frequency of *(Type-in)*;”
  - ❖ (D) “Maturity at a frequency of *(Type-in)*;”
  - ❖ (E) “A, B, C and D;”
  - ❖ (F) “Other: At a frequency of *(Type-in)*”



# POTENTIAL NEW EXEMPTION #20 - OUTDOOR FOOD WASTE (VEGETATIVE ONLY) COMPOSTING

## Main Topics for Today

1. Operational Requirements
2. Buffers
3. Bulking Agents
4. Operator Training
5. Daily Records
6. *Much More...*



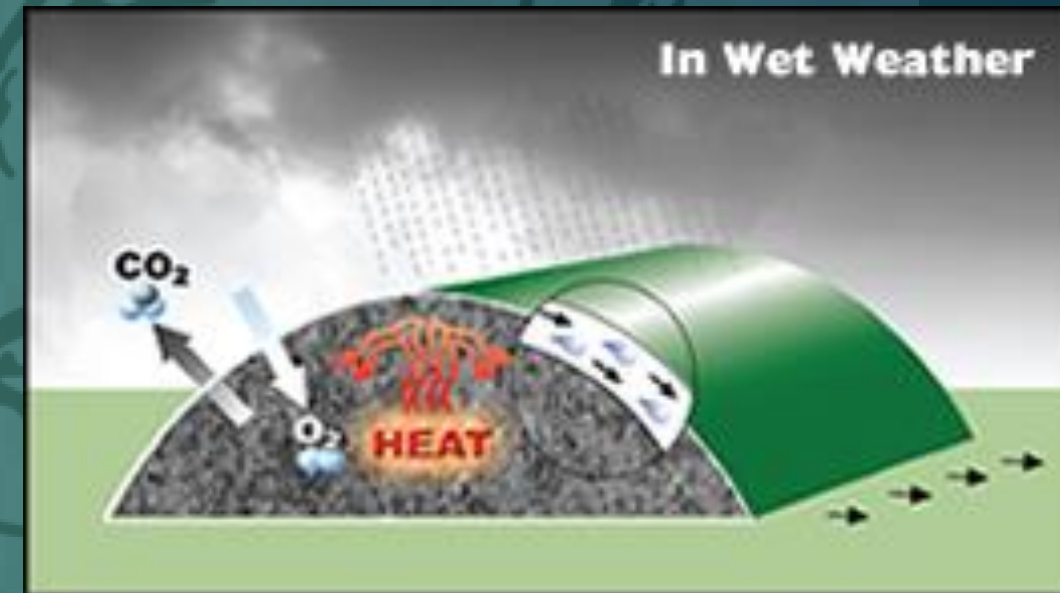
[AA]



# POTENTIAL NEW EXEMPTION #20 – OUTDOOR FOOD WASTE (VEGETATIVE ONLY) COMPOSTING: BACKGROUND | PART 1

## ► Summary of NEW Exemption:

- ❖ Objective: Handle Outdoor & Indoor Large-Scale Food Waste Composting Operations
- ❖ Mission: Consistent with Governor's Priority for Reducing GHGs
- ❖ Applicable Areas: Wide Open Spaces Across New Jersey



[AB]





# POTENTIAL NEW EXEMPTION #20 – OUTDOOR FOOD WASTE (VEGETATIVE ONLY) COMPOSTING: BACKGROUND | PART 2

## ► Summary of NEW Exemption:

- ❖ Relatability: Class C Scaled Down
- ❖ Outcome: Food Waste Re-used for Various Recycling Efforts



[AC]



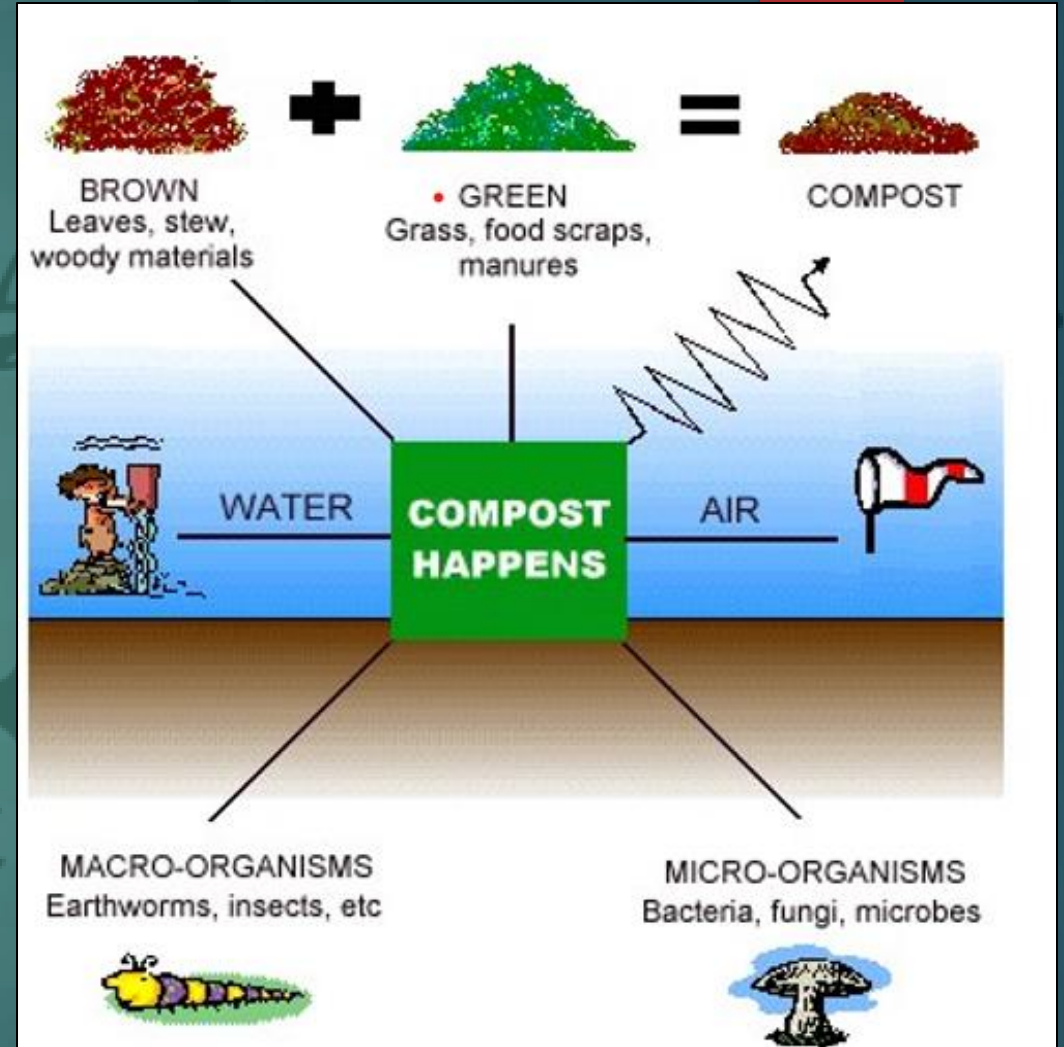


# POTENTIAL NEW EXEMPTION #20 – OUTDOOR FOOD WASTE (VEGETATIVE ONLY) COMPOSTING: OVERVIEW | PART 1

## ► Proposed Allowed Activities and Materials:

❖ One must utilize the following to effectively conduct this activity -

- Gas-Permeable Water-Repelling Compost Cover
- Leachate Collection System
- Aerated Blower



[AD]

# POTENTIAL NEW EXEMPTION #20 – OUTDOOR FOOD WASTE (VEGETATIVE ONLY) COMPOSTING: OVERVIEW | PART 2

## ► Proposed Qualifications:

- ❖ Buffer – maintained between active operations and property line
- ❖ Volume Limitation - facility receives a limited quantity per year of food waste



[AE]

# POTENTIAL NEW EXEMPTION #20 – OUTDOOR FOOD WASTE (VEGETATIVE ONLY) COMPOSTING: OVERVIEW | PART 3

## ► Operational Contingencies:

- ❖ Minimize (1) Odors, (2) Contact Water, (3) Fire, and (4) Wildlife scavenging
- ❖ Non-compostable waste removed from mix by end of day
- ❖ Operational Space ≠ Residential Areas



[AF]



# POTENTIAL NEW EXEMPTION #20 – OUTDOOR FOOD WASTE (VEGETATIVE ONLY)

## COMPOSTING: BACKGROUND & OPERATIONAL REQUIREMENTS | PART 1

### ► Operational Limitations

- ❖ Pile Heights
- ❖ *Bulking Agent Storage Pile Volumes*
- ❖ Pathogen Destruction – 55 degrees °C ≥ 3 days
- ❖ Finished Compost
- ❖ Area maintained
  - ❖ No rutting
  - ❖ No ponding



[AG]





# POTENTIAL NEW EXEMPTION #20 – OUTDOOR FOOD WASTE (VEGETATIVE ONLY) COMPOSTING: BACKGROUND & OPERATIONAL REQUIREMENTS | PART 2

## ▶ Trained Operators

### ❖ Certifications

### ❖ Approved Certifiable Entities:

- US Composting Council
- County Agricultural Organizations
- Resource Management Agents
- Rutgers University
- Etc.



[AH]



# POTENTIAL NEW EXEMPTION #20 – OUTDOOR FOOD WASTE (VEGETATIVE ONLY) COMPOSTING: BACKGROUND & OPERATIONAL REQUIREMENTS | PART 3

- ▶ Daily Records
  - ❖ Department Website for Form
  - ❖ Include the following:
    - Incoming totals
    - Compost on-site
    - Compost shipped
    - Mixture temperature records



[AI]



# POTENTIAL NEW EXEMPTION #20 – OUTDOOR FOOD

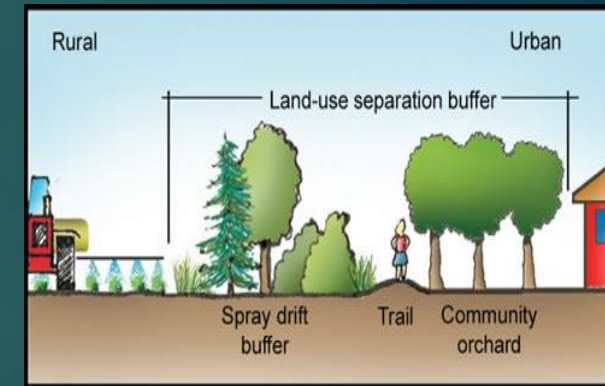
## WASTE (VEGETATIVE ONLY) COMPOSTING: FUNDAMENTAL QUESTIONS PART 1 (BASICS)

▶ Question #14: "What would be an appropriate buffer distance?"

▶ Answers: (A) "50 ft;" (B) "75 ft;" (C) "100 ft;" (D) "Other (*Type-in*)"

▶ Question #15: Should the buffer vary depending on zoning?

❖ Answers: (A) "Yes;" (B) "No;" (C) "Other (*Type-in*)"



▶ Question #16: "What would be appropriate volume limitations for incoming materials, per year?"

[AJ]

❖ Answers: (A) "2,000 CY, per year;" (B) "4,000 CY, per year;" (C) "6,000 CY, per year;" (D) "Other (*Type-in*)"



# POTENTIAL NEW EXEMPTION #20 – OUTDOOR FOOD WASTE (VEGETATIVE ONLY) COMPOSTING: FUNDAMENTAL QUESTIONS | PART 2 (PILE HEIGHTS)

- ▶ Question #17: “What should the pile height limitation be for *Active Compost* pile?”

❖ *Answers:*

- (A) “4 ft;” (B) “6 ft;” (C) “8 ft;” Other (*Type-in*)”

- ▶ Question #17B: “What should the pile height limitations be for the *Bulking agent* pile?”

❖ *Answers:*

- (A) “10 ft;” (B) “15 ft;” (C) “20 ft;” Other (*Type-in*)”

- ❏ Question #17C: “What should the pile height limitations be for the *Curing* piles?”

❖ *Answers:*

- (A) “10 ft;” (B) “15 ft;” (C) “20 ft;” Other (*Type-in*)”



[AK]





# POTENTIAL NEW EXEMPTION #20 – OUTDOOR FOOD WASTE (VEGETATIVE ONLY)

## COMPOSTING: FUNDAMENTAL QUESTIONS | PART 3

▶ Question #18A: “What should the storage volume limitations be for the *Bulking Agent* Pile?”

❖ *Answers:*

➤ (A) “500 CY;” (B) “1,000 CY;” (C) “2,000 CY;” (D) “Other (*Type-in*)”

▶ Question #18B: “What should the storage volume limitations be for the *Finished Compost* pile?”

❖ *Answers:*

➤ (A) “750 CY;” (B) “1,000 CY;” (C) “3,000 CY;” (D) “Other (*Type-in*)”

▶ Question #18C: “Should the compost piles be required to be maintained at 55 degrees Celsius for 3 consecutive days?”

❖ *Answers:*

➤ (A) “Yes;” (B) “No”



[AL]



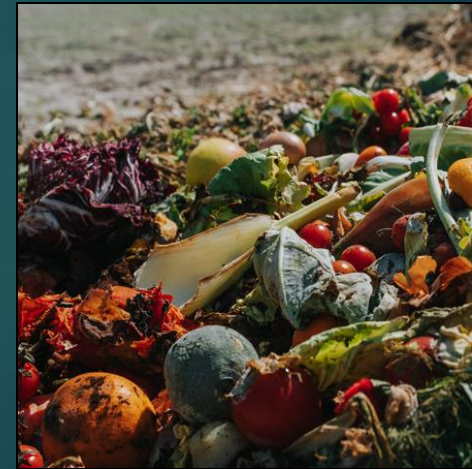
#46

# POTENTIAL NEW EXEMPTION #20 – OUTDOOR FOOD WASTE (VEGETATIVE ONLY)

## COMPOSTING: FUNDAMENTAL QUESTIONS | PART 4 (FINAL SET)



[AM]



[AN]

- ▶ Question #19: “Besides the US Composting Council, Rutgers, etc., do other organizations certify food waste composting operators?”

- ❖ Answers: (A) "*Type in Name of Organization*"

- ▶ Question #20: “How often should operators re-certify?”

- ❖ Answers: (A) “Every year;” (B) “Every 3 years;” (C) “Every 5 years;” (D) “Other (*Type-in*)”

- ▶ Question #21: “Are there any additional Items to Include in Daily Records?”

- ❖ Answers: (A) “Fill in (*Type-in*)”

***ANY OTHER QUESTIONS???***





# POTENTIAL NEW EXEMPTION #21 – INDOOR FOOD WASTE COMPOSTING

## Main Topics for Today

1. Types of Food Waste
2. Building Design Criteria
3. Indoor Food Waste Composting Operations
4. Bulking Agent Management
5. Finished Compost
6. Operator Training
7. Record Keeping



[AO]

# POTENTIAL NEW EXEMPTION #21 – INDOOR FOOD WASTE COMPOSTING OBJECTIVES

- ▶ Minimize and control odors
- ▶ Eliminate contact water
- ▶ Minimize fire risks



[AP]



# POTENTIAL NEW EXEMPTION #21 – INDOOR FOOD WASTE COMPOSTING OBJECTIVES

- ▶ Manage leachate
- ▶ Control pests and scavenging wildlife
- ▶ Produce compost free of pathogens



# POTENTIAL NEW EXEMPTION #21 – INDOOR FOOD WASTE COMPOSTING: OPERATION LIMITATIONS | PART 1

- ▶ Proposed limits
- ▶ Composting performed inside building
- ▶ Food waste placed into compost piles by end of operating day
- ▶ Adequate property line setback



[AR]

# POTENTIAL NEW EXEMPTION #21 – INDOOR FOOD WASTE COMPOSTING: OPERATION LIMITATIONS | PART 2

- ▶ Food Waste Capacity limits
- ▶ Bulking Agent Limits
- ▶ Finished Compost Limits



[AS]



# POTENTIAL NEW EXEMPTION #21 – INDOOR FOOD WASTE COMPOSTING: STRUCTURAL DESIGN CRITERIA

- ▶ Impermeable sloped floor for drainage
- ▶ Leachate collection system
- ▶ Interior air ventilation system



[AT]



[AU]

# POTENTIAL NEW EXEMPTION #21 – INDOOR FOOD WASTE COMPOSTING: OPERATIONS

- ▶ Limited to source separated food wastes
- ▶ Free of non-compostable materials
- ▶ Timely mixed into active compost pile



[AV]

# POTENTIAL NEW EXEMPTION #21 – INDOOR FOOD WASTE COMPOSTING: OPERATIONS

- ▶ Pile maintenance critical
- ▶ Routine temperature measurements



[AW]



# POTENTIAL NEW EXEMPTION #21 – INDOOR FOOD WASTE COMPOSTING: BULKING AGENT

- ▶ Bulking agents may consist of wood chips, leaves, crop Chaffee, etc.
- ▶ Outdoor storage allowed
- ▶ Appropriately managed to control and limit stormwater runoff
- ▶ Housekeeping needed around stockpile to eliminate rutting and ponded water



[AX]



[AY]

# NEW EXEMPTION #21 – INDOOR FOOD WASTE COMPOSTING: DAILY RECORD KEEPING | PART 1

- ▶ Records are used to document daily operational data
- ▶ Allows the operator to effectively manage compost operations
- ▶ Enables the Department to make compliance determinations
- ▶ Are useful in resolving unforeseen conditions or problems



[AZ]

## NEW EXEMPTION #21 – INDOOR FOOD WASTE COMPOSTING: DAILY RECORD KEEPING | PART 2

- ▶ Ensure finished compost is suitable for end uses
- ▶ Utilize standardized form available on Department's website
- ▶ Records maintained for at least three years



[AAA]



# NEW EXEMPTION #21 – INDOOR FOOD WASTE COMPOSTING: OPERATOR CERTIFICATION

- ▶ Operator must attend and complete an approved course to obtain & maintain certification
- ▶ Approved courses sponsored by multiple entities including:
  - ❖ Rutgers
  - ❖ US Composting Council
  - ❖ County Agricultural & Resource Management Agents
  - ❖ Other



▶ **Any other Questions?**

[AAC]

# POTENTIAL NEW EXEMPTION #21 – INDOOR FOOD WASTE COMPOSTING: FUNDAMENTAL QUESTIONS

- ▶ Question #22: "How long should food waste be stored prior to window placement?"
  - ❖ Answers: (A) "Immediately;" (B) "Within 24-hours;" (C) "Within 48-hours;" (D) "Other (*Type-in*)"
- ▶ Question 23: "What would be an appropriate setback distance from the property line?"
  - ❖ Answers: (A) "50 feet;" (B) "75 feet;" (C) "100 feet;" (D) "Other (*Type-in*)"
- ▶ Question 24: "What would be an appropriate on-site storage volume of finished compost?"
  - ❖ Answers: (A) "5,000 cubic yards;" (B) "7,500 cubic yards;" (C) "10,000 cubic yards;" (D) "Other (*Type-in*)"

# POTENTIAL NEW EXEMPTION #21 – INDOOR FOOD WASTE COMPOSTING: FUNDAMENTAL QUESTIONS

▶ Question #25: "What should the maximum limitation amount be for bulking agent material storage?"

❖ Answers: (A) "5,000 cubic yards;" (B) "7,500 cubic yards;" (C) "10,000 cubic yards;" (D) "Other (*Type-in*)"

▶ Question #26: "What should the maximum throughput capacity be, per year?"

❖ Answers: (A) "2,500 cubic yards;" (B) "5,000 cubic yards;" (C) "10,000 cubic yards;" (D) "Other (*Type-in*)"



# POTENTIAL NEW EXEMPTION #21 – INDOOR FOOD WASTE COMPOSTING: FUNDAMENTAL QUESTIONS

- ▶ Question #27: "Should oxygen levels be required to be monitored for these operations?"
  - ❖ Answers: (A) "Yes;" (B) "No"
- ▶ Question #28: "If there are other parameters to be measured, what are they and what frequency should they be measured at?"
  - ❖ Answers: "Open-Ended (*Type-in*)"

## NEW EXEMPTION #21 – BULKING AGENT QUESTIONS

- ▶ Question #29: "Are there any other factors that should be considered for inclusion within this new and proposed exemption?"
  - ❖ Answers: *"Open-Ended (Type-in)"*



[AAB]

# Ideas and Issues from Stakeholders

- ▶ Question #30: "Has anyone experienced any issues with these exemptions that have not been discussed today?"
  - ❖ Answers: (A) "Yes (*Type-in*);" or (B) "No"
- ▶ Question #31: "Does anyone have any alternative ideas to improve these exemptions?"
  - ❖ Answers: (A) "Yes (*Type-in*);" or (B) "No"
- ▶ Question #32: "Anything else?"
  - ❖ Answers: "Fill-in/Open-Ended (*Type-in*)"
- ▶ We NEED your insight!





## Recordkeeping (General)

- ▶ The Department will require recordkeeping for better enforceability for this and all other applicable exemptions
- ▶ These recordkeeping provisions may come in the form of the following:
  - ❖ Daily logs, electronic record books, trackers, etc.
- ▶ Moving on to our Next Topic!



[AAE]

# *Best Management Practices*

NJDEP recommends the inclusion of Best Management Practices in the Recycling Rules, N.J.A.C. 7:26A.

# Suggested changes to N.J.A.C. 7:26A-1.4(b) – *General Requirements for All Exemptions*

- ▶ Cannot claim multiple exemptions of certain types
  - ❖ NJDEP discretion to limit a person claim of combination of multiple exemptions
- ▶ Must receive NJDEP's acknowledgement prior to commencing operations
- ▶ Require documentation that all required State, county, and municipal approvals have been obtained
  - ❖ Currently unclear if the appropriate local and county officials receive notification
- ▶ Expiration – one-year cycle with ability to renew
  - ❖ *Phase-in period for compliance with new requirements*
  - ❖ *Fee for Initial application and renewal.*

# Local and Other State Approvals

- ▶ Question #33: “Should the Department require that the holder of the exemption post on its website all the local and other applicable approvals held to support the subject exemption?”
  - ❖ Answers: (A) "Yes (*Type-in*);" (B) "No (*Type-in*)"

## EXEMPTION 7 IS US!, INC.

*We hold the following approvals  
to operate in compliance with N.J.A.C.7:26A – 1.4(b)  
at 123 Main Street, Anytown, New Jersey:*

- ▶ Anytown Zoning Approval Resolution # 12345
- ▶ NJPDES 5G3 Storm Water Permit # NJ0088323
- ▶ Anytown Fire Department Approval # 101112
- ▶ Anytown Mosquito Control Commission Approval # 1314



# Exemption Transparency

- ▶ Question #34: "Should the operator of the exempt activity be required to post a sign at the site that is visible to the public that includes: contact information, number and type of exemption?"
  - ❖ Answers: (A) "Yes (*Type-in*);" (B) "No"

Exemption 7 is US!, INC. is operating this site in accordance with the following:

- N.J.A.C. 7:26A – 1.4(b)

Approvals for operations are listed on our website at:  
[Exemption\\_7\\_.com](http://Exemption_7_.com)

For more information, please contact Mr. Robert "Bob" D. Builder at: (609) 555 – 6789 with all questions.

# Changes to N.J.A.C. 7:26A-1.4(c) - Certification

- ▶ Adds certification language consistent with other rules
  - ❖ Certification statement – additional permit and approval attesting
    - ‘including obtaining applicable municipal, county, State, and Federal permits and approvals’
  - ❖ Clarification on individuals signing the certification
    - Corporation
    - Limited Liability Company
    - Partnership
    - Sole Proprietorship
    - Municipal, county, State, Federal, other public agency
    - Duly authorized representative

# Closing Remarks

## ► Thank you for your input!

❖ Q35: How did We do? Brief Responses are Much Appreciated (Type-in)

- Summaries of the topics covered at the meeting and relevant information will be made available following the meetings at <https://www.nj.gov/dep/workgroups/index.html>
- This is the last planned stakeholder meeting for these rule amendments.
- Following proposals of the rule changes, formal comments on the rules can be made by anyone during the announced comment period.
- Please direct your main questions via email to: [exemptrecycling@dep.nj.gov](mailto:exemptrecycling@dep.nj.gov)



[AAF]

# References – Part 1:

1. [A] Essential Powerpoint Image (Siphoned for Display purposes ONLY). Link - <https://www.vecteezy.com/free-vector/modern-white-background>
2. [B] Essential Powerpoint Image (Siphoned for Display purposes ONLY). Link - [https://en.wikipedia.org/wiki/New\\_Jersey\\_Department\\_of\\_Environmental\\_Protection](https://en.wikipedia.org/wiki/New_Jersey_Department_of_Environmental_Protection)
3. [C] Essential Powerpoint Image (Siphoned for Display purposes ONLY). Link - <https://www.nj.gov/dep/climatechange/njclimatedataask.html>
4. [D] How to crash your own presentation: 10 techniques and other small tricks. (2018, August 31). Retrieved May 29, 2020, from <https://www.galchimia.com/how-to-crash-your-own-presentation/>
5. [E] Free Bullseye Clipart - Clip Art Target Symbol, HD Png Download , Transparent Png Image - PNGitem. (n.d.). Retrieved May 29, 2020, from [https://www.pngitem.com/middle/wThwRJ\\_free-bullseye-clipart-clip-art-target-symbol-hd/](https://www.pngitem.com/middle/wThwRJ_free-bullseye-clipart-clip-art-target-symbol-hd/)
6. [F] Essential Powerpoint Image (Siphoned for Display purposes ONLY). Link - <https://waste4change.com/wp-content/uploads/hero.jpg>
7. [G] Essential Powerpoint Image (Siphoned for Display purposes ONLY). Link - <https://foodprint.org/wp-content/uploads/2019/09/Composting-And-Food-Waste.jpg>
8. [H] Essential Powerpoint Image (Siphoned for Display purposes ONLY). Link - <https://www.google.com/url?sa=i&url=https%3A%2F%2Fwww.thisweeknews.com%2Fnews%2F20200810%2Ffood-waste-recycling-program-has-success-in-westerville&psig=AQvVaw0Dfcurat0PPE0wZ9jeh4ey&ust=1603390133556000&source=images&cd=vfe&ved=0CAIQjRxqFwoTCJD5uOyjuwCFQAAAAAdAAAAAAZ>
9. [I] Essential Powerpoint Image (Siphoned for Display purposes ONLY). Link - <https://cdn.ilsr.org/wp-content/uploads/2018/04/Untitled-design.png>
10. [J] Essential Powerpoint Image (Siphoned for Display purposes ONLY). Link - [https://cdn.ilsr.org/wp-content/uploads/2017/12/CompostingforCommunity-Bmore-NSR-pile-build\\_preview.jpeg](https://cdn.ilsr.org/wp-content/uploads/2017/12/CompostingforCommunity-Bmore-NSR-pile-build_preview.jpeg)
11. [K] Essential Powerpoint Image (Siphoned for Display purposes ONLY). Link - [https://www.google.com/url?sa=i&url=https%3A%2F%2Fretumtonow.net%2F2020%2F08%2F06%2Fvermont-makes-it-illegal-to-throw-compost-in-the-trash%2F&psig=AQvVaw3olRbp9AZlpD8gvwA1Z\\_Gn&ust=1602249857539000&source=images&cd=vfe&ved=0CAIQjRxqFwoTCLiP-ICMpewCFQAAAAAdAAAAABAE](https://www.google.com/url?sa=i&url=https%3A%2F%2Fretumtonow.net%2F2020%2F08%2F06%2Fvermont-makes-it-illegal-to-throw-compost-in-the-trash%2F&psig=AQvVaw3olRbp9AZlpD8gvwA1Z_Gn&ust=1602249857539000&source=images&cd=vfe&ved=0CAIQjRxqFwoTCLiP-ICMpewCFQAAAAAdAAAAABAE)
12. [L] Essential Powerpoint Image (Siphoned for Display purposes ONLY). Link - <https://www.hgtv.com/outdoors/gardens/planting-and-maintenance/cover-my-compost-pile>



# References – Part 2:

13. [M] Essential Powerpoint Image (Siphoned for Display purposes ONLY). Link - <https://www.openpr.com/wiki/background-information>
14. [N] Essential Powerpoint Image (Siphoned for Display purposes ONLY). Link - <https://www.hotbincomposting.com/blog/do-i-need-to-keep-adding-bulking-agent.html>
15. [O] Essential Powerpoint Image (Siphoned for Display purposes ONLY). Link - <http://leadershipg11green.blogspot.com/2013/08/training.html>
16. [P] Essential Powerpoint Image (Siphoned for Display purposes ONLY). Link - <https://www.onlinelabels.com/clip-art/Stack-of-books-127228>
17. [Q] Essential Powerpoint Image (Siphoned for Display purposes ONLY). Link - <http://www.ecovrs.com/en/products/in-vessel-composting/ridan-composter/>
18. [R] Essential Powerpoint Image (Siphoned for Display purposes ONLY). Link - <https://ccsbestpractice.org.uk/entries/food-waste-processor-vegetable-garden-and-rainwater-harvesting-in-the-site-office/>
19. [S] Essential Powerpoint Image (Siphoned for Display purposes ONLY). Link - <https://keepaustinbeautiful.org/blog/what-is-compost-why-does-it-matter/>
20. [T] Essential Powerpoint Image (Siphoned for Display purposes ONLY). Link - <https://www.profoodworld.com/home/article/13278069/waste-not-want-not-how-some-processors-mitigate-food-waste>
21. [U] Essential Powerpoint Image (Siphoned for Display purposes ONLY). Link - <https://www.allguard.co.nz/vp7060-prohibition-safety-signage>
22. [V] Essential Powerpoint Image (Siphoned for Display purposes ONLY). Link - <https://www.newfoodmagazine.com/article/93637/producing-protein-from-food-waste/>
23. [W] Iconfinder - Appointment, calendar, reminder, schedule, timeframe icon. (n.d.). Retrieved June 11, 2020, from [https://www.iconfinder.com/icons/1729650/appointment\\_calendar\\_reminder\\_schedule\\_timeframe\\_icon](https://www.iconfinder.com/icons/1729650/appointment_calendar_reminder_schedule_timeframe_icon)
24. [X] Essential Powerpoint Image (Siphoned for Display purposes ONLY). Link - <http://www.safebee.com/home/how-compost-without-attracting-pests>

# References – Part 3

25. [Y] Essential Powerpoint Image (Siphoned for Display purposes ONLY). Link - <https://www.thespruce.com/what-makes-a-good-noise-barrier-fence-2130907>
26. [Z] Essential Powerpoint Image (Siphoned for Display purposes ONLY). Link - <https://helpmecompost.com/does-compost-smell-the-truth-about-smelly-compost/>
27. [AA] Essential Powerpoint Image (Siphoned for Display purposes ONLY). Link - <https://www.biocycle.net/yard-trimmings-composting-site-food-waste-ready/>
28. [AB] Essential Powerpoint Image (Siphoned for Display purposes ONLY). Link - <https://www.cvcompost.com/ccovers.php>
29. [AC] Essential Powerpoint Image (Siphoned for Display purposes ONLY). Link - <https://davidmarlin.co.uk/portfolio/the-truth-about-fillers-and-bulking-agents-in-equine-supplements/>
30. [AD] Essential Powerpoint Image (Siphoned for Display purposes ONLY). Link - <https://www.pinterest.com/pin/213217363578508985/>
31. [AE] Essential Powerpoint Image (Siphoned for Display purposes ONLY). Link - <https://www.google.com/url?sa=i&url=https%3A%2F%2Fzenbird.media%2Ffood-waste-in-japan%2F&psig=A0vVaw3ENY1eQBQBSEbvcgkM-LSf&ust=1602249546977000&source=images&cd=vfe&ved=0CAIQjRxqFwoTCKj9lvOKpewCFQAAAAAdAAAAABAZ>
32. [AF] Essential Powerpoint Image (Siphoned for Display purposes ONLY). Link - <https://www.google.com/url?sa=i&url=http%3A%2F%2Fiebusinessdaily.com%2Ffriverside-seeks-to-remove-fire-hazard%2F&psig=A0vVaw2NNiZbD8Hy23tJPbPKw1mz&ust=1603205235225000&source=images&cd=vfe&ved=0CAIQjRxqFwoTCJClqff4wOwCFQAAAAAdAAAAABAD>
33. [AG] Essential Powerpoint Image (Siphoned for Display purposes ONLY). Link - [https://www.google.com/imgres?imgurl=http%3A%2F%2Fwww.wastetodaymagazine.com%2Ffileuploads%2Fpublications%2F44%2Fissues%2F103658%2Farticles%2Fimages%2FAdobeStock\\_143892889\\_fmt.png&imgrefurl=https%3A%2F%2Fwww.wastetodaymagazine.com%2Farticle%2Ftreating-ammonia-in-landfill-leachate%2F&tbnid=U-Xt\\_tbxwji4M&vet=12ahUKEwiNmckM-sDsAhWiAt8KHUVzCsMQMygHegUIARDWAQ..i&docid=JBQfcFool133EM&w=720&h=462&q=Leachate&ved=2ahUKEwiNmckM-sDsAhWiAt8KHUVzCsMQMygHegUIARDWAQ](https://www.google.com/imgres?imgurl=http%3A%2F%2Fwww.wastetodaymagazine.com%2Ffileuploads%2Fpublications%2F44%2Fissues%2F103658%2Farticles%2Fimages%2FAdobeStock_143892889_fmt.png&imgrefurl=https%3A%2F%2Fwww.wastetodaymagazine.com%2Farticle%2Ftreating-ammonia-in-landfill-leachate%2F&tbnid=U-Xt_tbxwji4M&vet=12ahUKEwiNmckM-sDsAhWiAt8KHUVzCsMQMygHegUIARDWAQ..i&docid=JBQfcFool133EM&w=720&h=462&q=Leachate&ved=2ahUKEwiNmckM-sDsAhWiAt8KHUVzCsMQMygHegUIARDWAQ)

# References – Part 4

34. [AH] Essential Powerpoint Image (Siphoned for Display purposes ONLY). Link - <https://www.google.com/url?sa=i&url=https%3A%2F%2Fwww.foxbusiness.com%2Flifestyle%2Fcalifornia-wildfire-glass-fire-napa-valley-wineries-sonoma-county-damage-fire-weather&psig=AOvVaw2DrL7-WB8VmcHy7q6XRY79&ust=1602250615949000&source=images&cd=vfe&ved=0CAIQjRxqFwoTCKCN0umOpewCFQAAAAAdAAAAABAD>
35. [AI] Essential Powerpoint Image (Siphoned for Display purposes ONLY). Link - <https://sika.scene7.com/is/image/sika/usa-food-beverage-red-purcem?wid=1280>
36. [AJ] Essential Powerpoint Image (Siphoned for Display purposes ONLY). Link - [https://www.fs.usda.gov/nac/buffers/guidelines/6\\_aesthetics/1.html](https://www.fs.usda.gov/nac/buffers/guidelines/6_aesthetics/1.html)
37. [AK] Essential Powerpoint Image (Siphoned for Display purposes ONLY). Link - <https://www.dailyherald.com/storyimage/DA/20160215/news/160219375/AR/0/AR-160219375.jpg&updated=201602150903&MaxW=800&MaxH=800&noborder>
38. [AL] Essential Powerpoint Image (Siphoned for Display purposes ONLY). Link - <https://pamplinmedia.com/sl/402383-299025-starting-in-2020-many-businesses-must-keep-food-out-of-the-garbage>
39. [AM] Essential Powerpoint Image (Siphoned for Display purposes ONLY). Link - [https://image1.masterfile.com/getImage/NjAwLTAzMdc1MzlzZW4uMDAwMDAwMDA=AGic9c/600-03075323en\\_Masterfile.jpg](https://image1.masterfile.com/getImage/NjAwLTAzMdc1MzlzZW4uMDAwMDAwMDA=AGic9c/600-03075323en_Masterfile.jpg)
40. [AN] Essential Powerpoint Image (Siphoned for Display purposes ONLY). Link - <https://bloximages.newyork1.vip.townnews.com/standard.net/content/tncms/assets/v3/editorial/0/22/0220eb2d-e2e1-5190-aa35-afc7ea99bacf/5b513e76ca535.image.jpg?resize=400%2C283>
41. [AO] Essential Powerpoint Image (Siphoned for Display purposes ONLY). Link - <https://www.sinclairintl.com/userdocs/Miscellaneous/logbook1web2.jpg>
42. [AP] Featurepics - Pile of Rubble. Retrieved June 11, 2020, from <https://www.featurepics.com/online/Pile-Rubble-821145.aspx>
43. [AQ] Jackson Junk Hauling - Fencing Services. Retrieved June 11, 2020, from <http://jacksonjunkhauling.com/fencing-services/>
44. [AR] Petroleum Pipeline Sign. Retrieved June 01, 2020, from [https://commons.wikimedia.org/wiki/File:Petroleum\\_pipeline\\_sign\\_-\\_panoramio.jpg](https://commons.wikimedia.org/wiki/File:Petroleum_pipeline_sign_-_panoramio.jpg)

# References – Part 5

45. [AS] Former Gloucester County Mulch Factory. Retrieved June 01, 2020, from <https://www.google.com/maps/search/gloucester+county+mulch+factory/@39.7630776,-75.1135405,331m/data=!3m1!1e3>
46. [AT] Idea of making reef from tires backfires. (2007, February 16). Retrieved June 01, 2020, from [http://www.nbcnews.com/id/17189132/ns/us\\_news-environment/t/idea-making-reef-tires-backfires/](http://www.nbcnews.com/id/17189132/ns/us_news-environment/t/idea-making-reef-tires-backfires/)
47. [AU] Retrieved June 01, 2020, from <https://www.sandiegocounty.gov/content/sdc/deh/waste/hhw/uwaste.html>
48. [AV] Products & Collections. (n.d.). Retrieved June 01, 2020, from <https://www.architecturalsalvagesd.com/products-collections>
49. [AW] Recycle Cans, Bottle Recycling, Glass Recycling: Main Street Fibers. (n.d.). Retrieved June 01, 2020, from <https://www.mainstreetfibers.com/services/bottles-and-cans/>
- 50.[AX] Clearing Land - LANDTHINK. (n.d.). Retrieved June 1, 2020, from <https://www.landthink.com/clearing-land/>
51. [AY] Textiles in Europe's circular economy. (2019, December 17). Retrieved June 01, 2020, from <https://www.eea.europa.eu/themes/waste/resource-efficiency/textiles-in-europe-s-circular-economy>
52. [AZ] Utility Work Fuels Business for Land Clearing Contractor. (2018, March 29). Retrieved June 01, 2020, from <https://www.petersoncorp.com/utility-work-fuels-business-for-land-clearing-contractor/>
53. (AAA) Exercising to Improve the Brain and Well-being. (2019, December 02). Retrieved June 01, 2020, from <https://www.americanenviroics.com/brain-power-how-to-be-mentally-strong/>
54. [AAB] Global Recycling Symbol. Retrieved June 01, 2020, from <http://bicknell.in.gov/>
55. [AAC] Cayenne Consulting - Recordkeeping for the Restless: Link: <https://www.caycon.com/blog/recordkeeping-for-the-restless>
56. [AAD] Essential Powerpoint Image (Siphoned for Display purposes ONLY). Link - <https://www.zmescience.com/other/feature-post/why-is-recycling-so-important-the-dirty-truth-behind-our-trash/>
57. [AAE] Essential Powerpoint Image (Siphoned for Display purposes ONLY). Link - <https://www.cnbc.com/2020/02/19/getting-serious-about-recycling-means-starting-with-truly-recyclable-products.html>
58. [AAF] Essential Powerpoint Image (Siphoned for Display purposes ONLY). Link - <https://www.cnbc.com/2020/02/19/getting-serious-about-recycling-means-starting-with-truly-recyclable-products.html>