

- MUNICIPAL BOUNDARY / WASTEWATER MANAGEMENT PLANNING AREA BOUNDARY
- DRAINAGE BASIN / WATER QUALITY MANAGEMENT PLANNING AREA BOUNDARY
- DRAINAGE BASIN BOUNDARY
- ALL UNMARKED AREAS - INDIVIDUAL SUBSURFACE DISPOSAL SYSTEM WITH WASTEWATER PLANNING FLOWS OF LESS THAN 2,000 GPD

SOURCE: USC & GS. MAPS : STOCKTON, HOPEWELL, LAMBERTVILLE & PENNINGTON QUADRANGLES

PLANNING AREA AND EXISTING SEWER SERVICE AREA
 LOCATED IN
 WEST AMWELL TOWNSHIP
 HUNTERDON COUNTY, NEW JERSEY
 WASTEWATER MANAGEMENT PLAN

REVISIONS	AUTH.	DATE	DATE
2006 RESUBMISSION TO D.E.P.	R.J.C.	6/28/06	SEPT. 14, 2000
PER 9/14/06 D.E.P. LETTER	R.J.C.	10/19/06	SCALE 1" = 2000'
PER D.E.P.	R.J.C.	10/24/06	DESIGNED BY ---
			DRAWN BY D.S.R.
			CHECKED BY R.J.C.

VAN CLEEF ENGINEERING ASSOCIATES
 CONSULTING CIVIL, ENVIRONMENTAL & MUNICIPAL ENGINEERING
 LAND SURVEYING-PROFESSIONAL PLANNING-LANDSCAPE ARCHITECTURE


HUNTERDON COUNTY Route 31, R.D. 9 Lambertville, NJ 08833 (609) 251-4500	SOMERSET COUNTY Box R.D. 3, P.O. Box 150 Amwell Road Belle Mead, NJ 08820 (609) 251-4291	MERCER COUNTY 2145 Route 22 Middletown, NJ 08041 (609) 251-3100
--	--	--

MAP #1



LEGEND :

--- MUNICIPAL BOUNDARY


 SERVICE AREA FOR WASTEWATER FACILITIES WITH PLANNING FLOWS OF LESS THAN 2,000 GPD WHICH DISCHARGE TO GROUND WATER DESIGNATION TO APPLY TO ENTIRE PLANNING AREA BOUNDARY

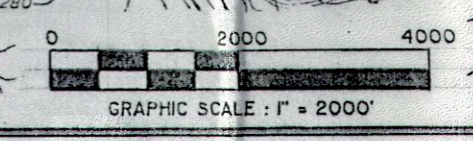
SOURCE : USC & GS MAPS ; STOCKTON , HOPEWELL , LAMBERTVILLE & PENNINGTON QUADRANGLES

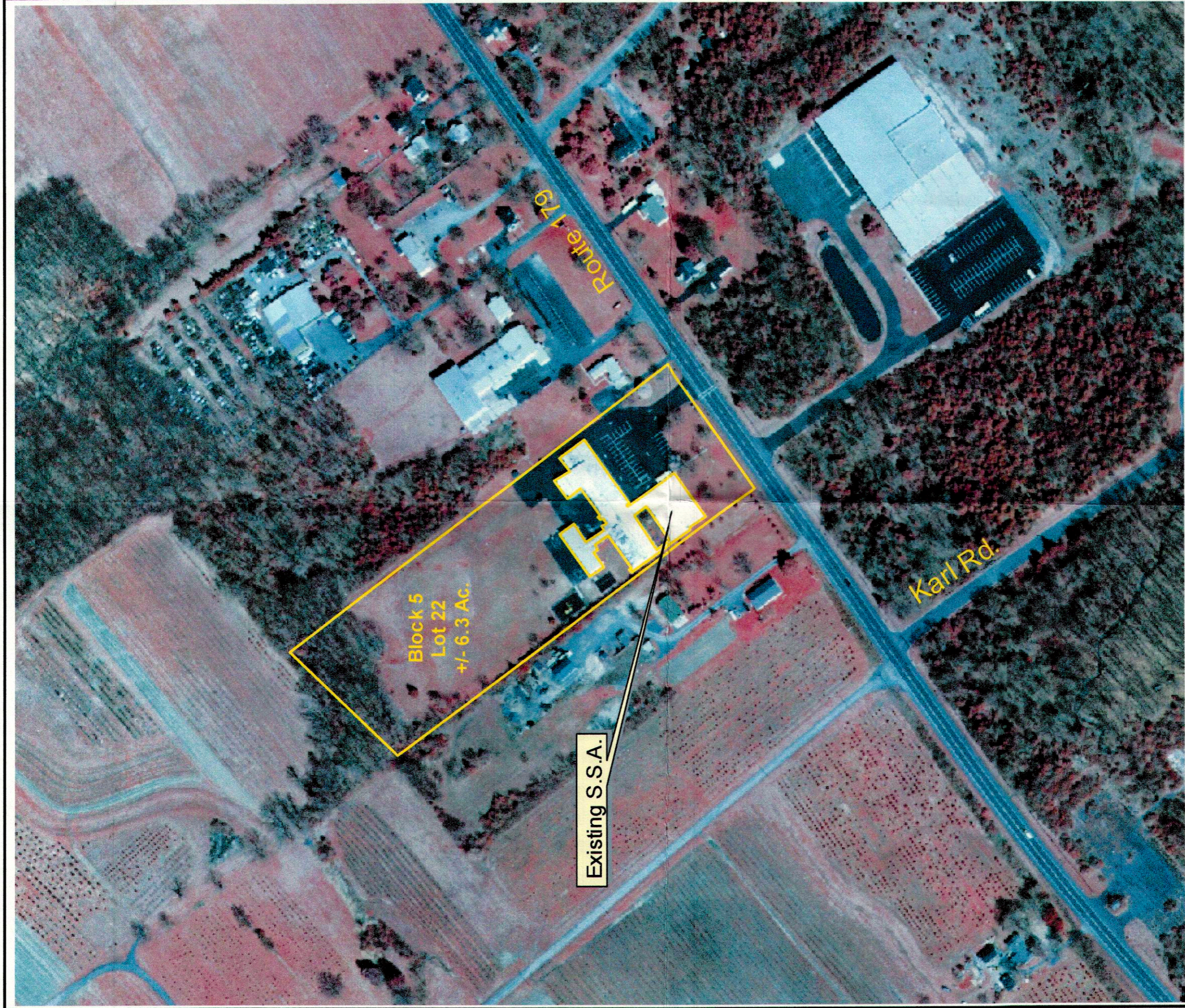
FUTURE WASTEWATER FACILITIES AND SERVICE AREAS
 LOCATED IN
 WEST AMWELL TOWNSHIP
 HUNTERDON COUNTY , NEW JERSEY
 WASTEWATER MANAGEMENT PLAN

REVISIONS	AUTH	DATE	DATE
2006 RESUBMISSION TO D.E.P.	R.J.C.	6/26/06	SEPT. 14, 2000
PER 9/14/06 D.E.P. LETTER	R.J.C.	10/19/06	SCALE 1" = 2000'
PER D.E.P.	R.J.C.	10/24/06	DESIGNED BY: _____
			DRAWN BY: E.D.
			CHECKED BY: R.J.C.

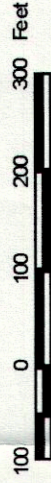

VAN CLEE ENGINEERING ASSOCIATES
 CONSULTING CIVIL, ENVIRONMENTAL & MUNICIPAL ENGINEERING - LAND SURVEYING-PROFESSIONAL PLANNING-LANDSCAPE ARCHITECTURE
 HUNTERDON COUNTY: Route 21 - R.D. 1, Lambertville, N.J. 08833 (609) 734-9200
 SOMERSET COUNTY: Aux. R.D. 3 P.O. Box 158, Amwell, NJ 08822 (609) 734-9200
 MERCER COUNTY: Route 25, Middleville, NJ 08846 (609) 254-3283

MAP #2





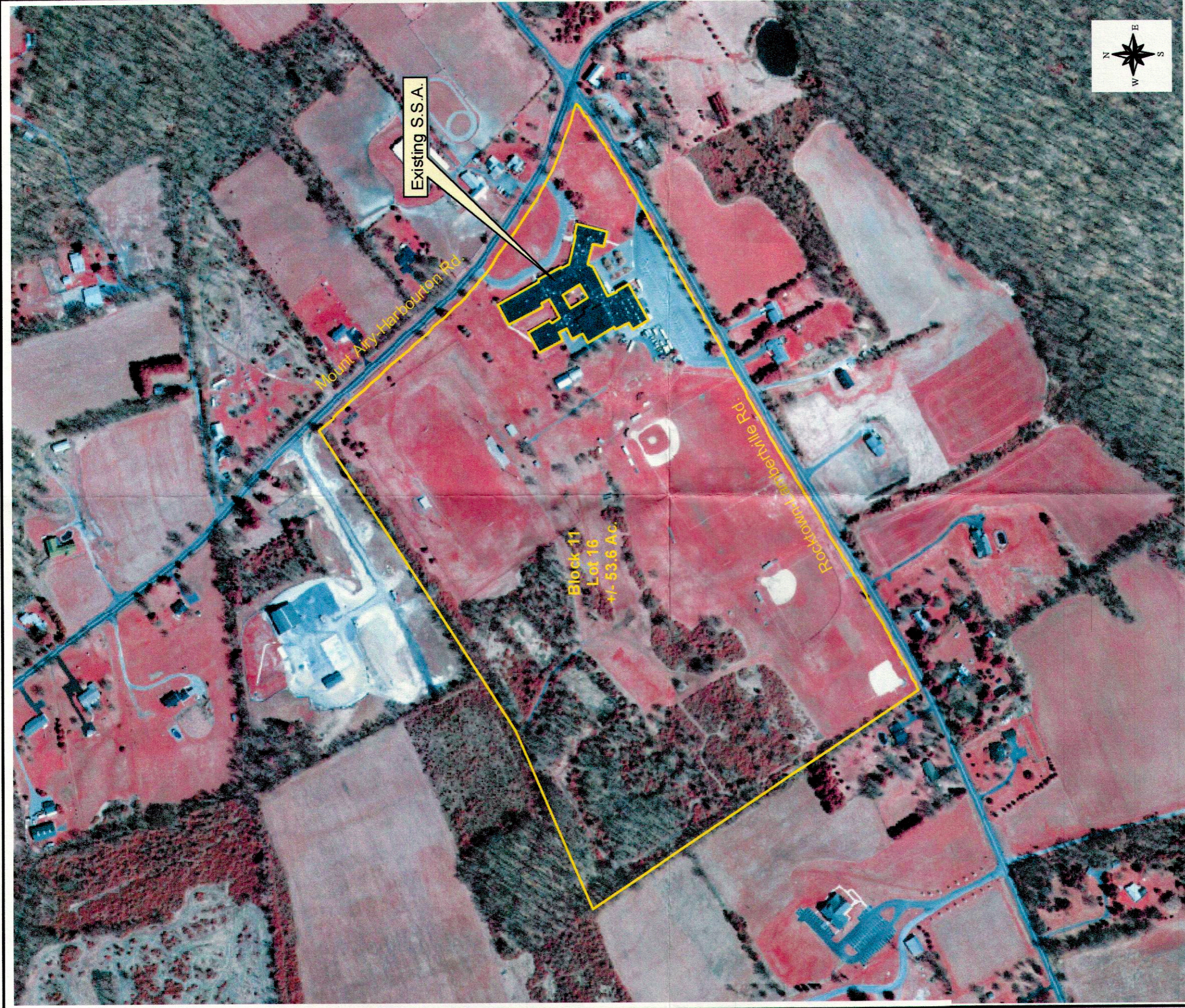
MAP #2 A
Existing Sewer Service Area
West Amwell Elementary School



THOMAS PLANNING ASSOCIATES
IRRELLE
PO Box 571
P.O. Box 571
Phone 732 231 3328



OCEAN TWP.
1410 Route 57 North
Phone 732 631 1118




MAP #2 B
 Existing Sewer Service Area
 South Hunterdon Regional High School

THOMAS PLANNING ASSOCIATES
 BERLJE
 P.O. Box 343
 South, NJ 08750-0343
 Phone: 732-251-9110

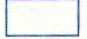
OCEAN TWP.
 14118 Ocean Blvd.
 Ocean, NJ 07712
 Phone: 732-841-1116

WEST AMWELL TOWNSHIP Hunterdon County

 HUC -14 (Hydrologic Unit Code) Watersheds

Central Delaware Watershed Management Area (WMA) Name
(HUC) 02040105210020 HUC 14 Number



Note: HUC 11 number is the first 11 numbers of the HUC 14 number

 Stream Buffer:



300 Ft. buffer of Category 1 waters and Reservoir;
150 Ft. buffer of FW 2 trout maintenance waters;
75 Ft. buffer all other waterways

Stream Categories:


Category 1- Fresh Water 2:


 Non-Trout
 Trout Maintenance


Fresh Water 2:

 Non Trout Production
 Trout Maintenance

Wild and Scenic Rivers - Delaware River

 Lakes, Rivers and Reservoir

 Freshwater Wetlands

 100 Year Floodplain *

* Includes A & AE floodplain designation



Source: Hunterdon County G.I.S. mapping
"This map was developed using Hunterdon County, N.J. digital data, but this secondary product has not been verified by Hunterdon County and is not County authorized."

MAP # 4 ENVIRONMENTAL FEATURES

Prepared: October 17, 2006

2000 0 2000 4000 6000 8000 10000 Feet

THOMAS PLANNING ASSOCIATES

BRIELLE P.O. Box 365 Brielle, N.J. 08730-0365 Phone: 732-221-1215		OCEAN TWP. 1411 Route 35 South Ocean, N.J. 07712 Phone: 732-663-1114
---	---	--

WEST AMWELL TOWNSHIP Hunterdon County

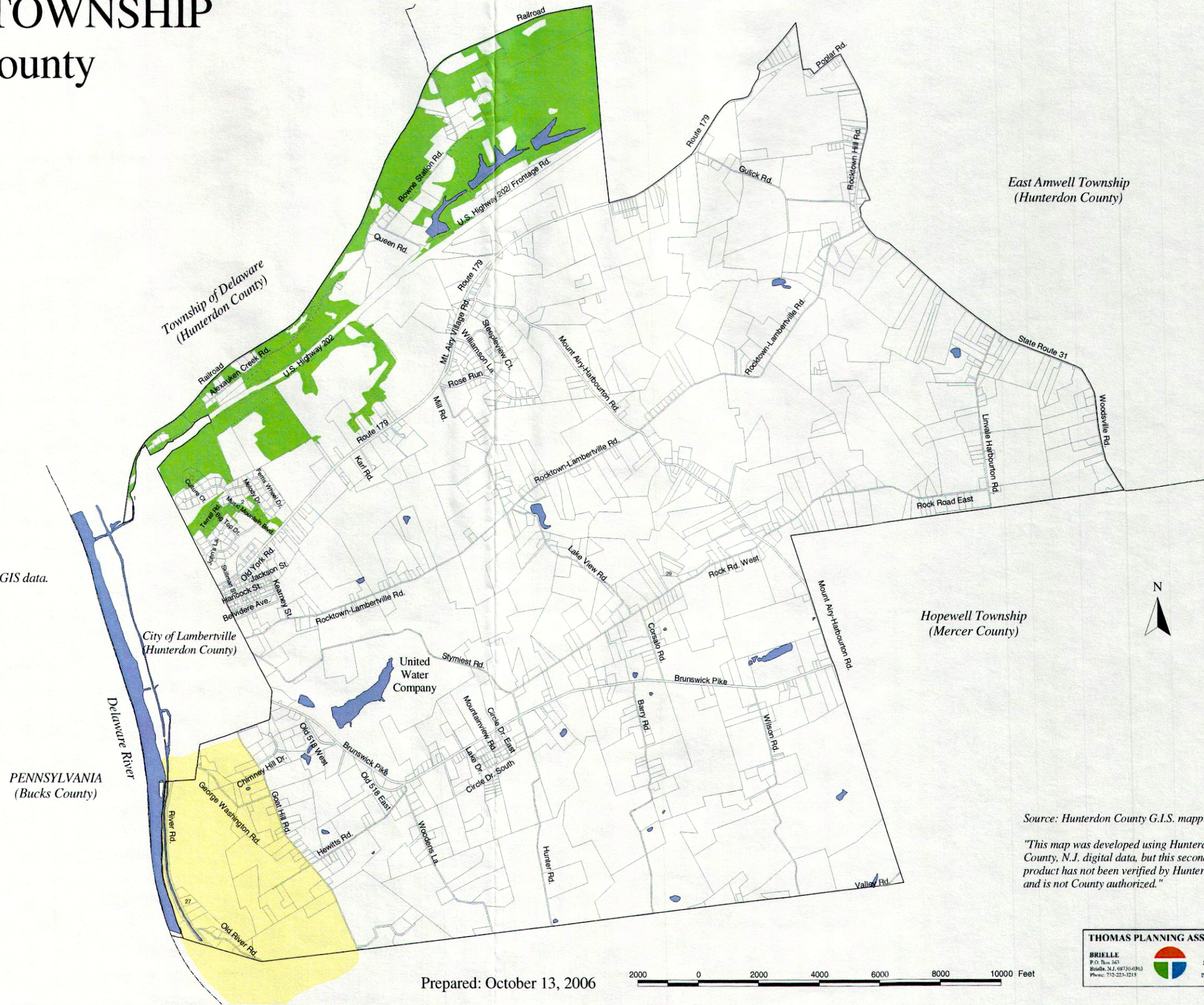
Forest Area - Landscape Plan

 State Threatened (Category 3)

Landscape Plan Source - New Jersey Division of Fish & Wildlife GIS data.

National Heritage Priority Site

Goat Hill - The site contains three (3) state listed endangered plant species.



PENNSYLVANIA
(Bucks County)

East Amwell Township
(Hunterdon County)

Hopewell Township
(Mercer County)

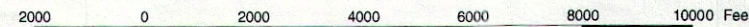


Source: Hunterdon County G.I.S. mapping

"This map was developed using Hunterdon County, N.J. digital data, but this secondary product has not been verified by Hunterdon County and is not County authorized."

MAP # 5 ENVIRONMENTAL PRIORITY SITES

Prepared: October 13, 2006



THOMAS PLANNING ASSOCIATES

BRIELLE P.O. Box 363 Brielle, N.J. 08730-0363 Phone: 732-223-2218		OCEAN TWP. 1411 Ocean Blvd. Ocean, N.J. 07712 Phone: 732-669-1114
---	---	---

WEST AMWELL TOWNSHIP Hunterdon County

Park & Open Space

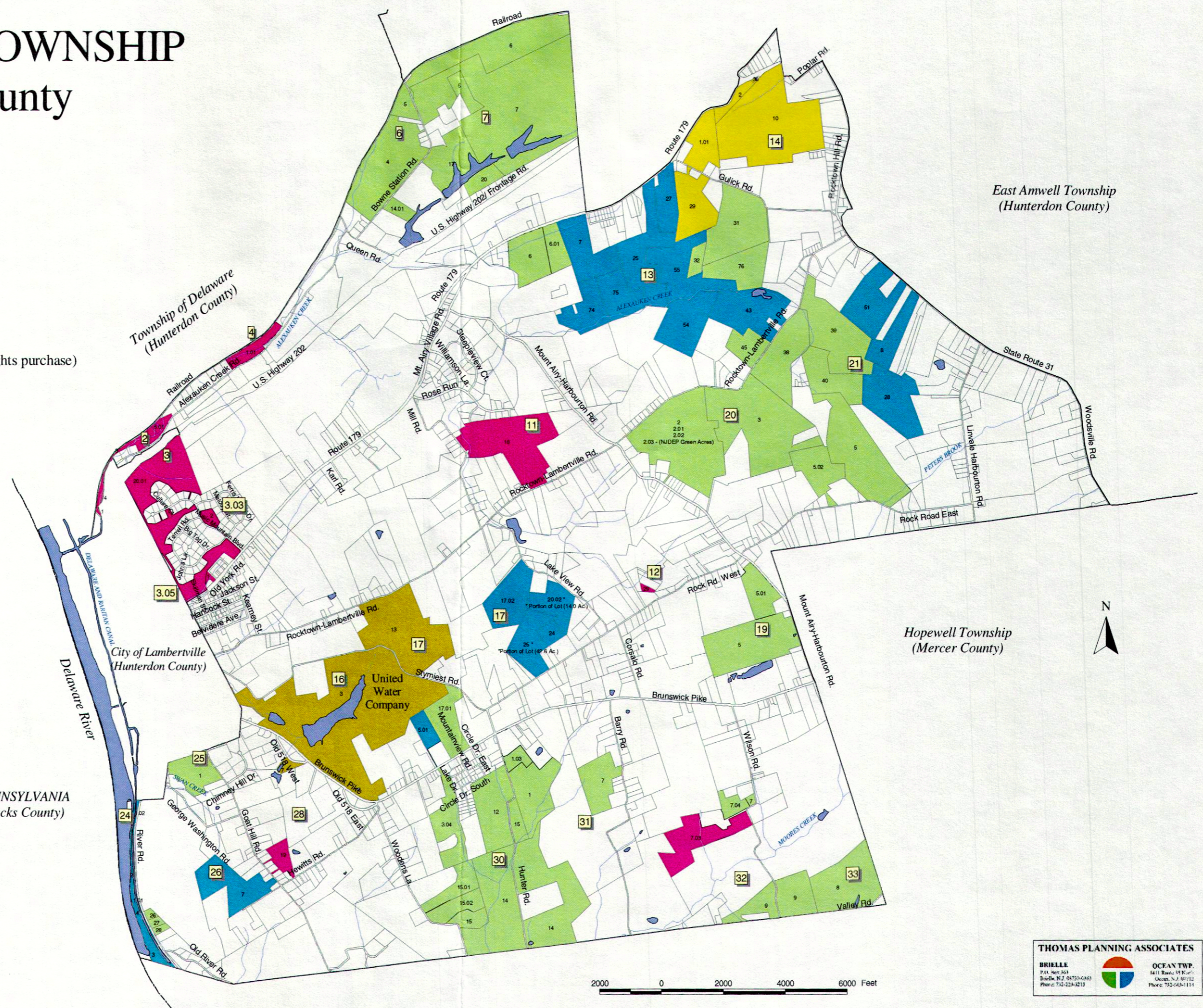
- Township of West Amwell
- County of Hunterdon
- State of New Jersey
- United Water Company (N.J.D.E.P.)
- Private / Non- Profit
(Includes conservation easement and development rights purchase)

- Lakes, Rivers and Reservoir
- Streams

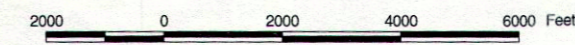
Source: Hunterdon County G.I.S. mapping

"This map was developed using Hunterdon County, N.J. digital data, but this secondary product has not been verified by Hunterdon County and is not County authorized."

Prepared: October 18, 2006



MAP # 6 OPEN SPACE



THOMAS PLANNING ASSOCIATES

BRIELLE P.O. Box 503 Brielle, NJ 08736-0503 Phone: 732-224-0213		OCEAN TWP. 1411 Route 138 Ocean, NJ 08857 Phone: 732-668-1114
---	--	---