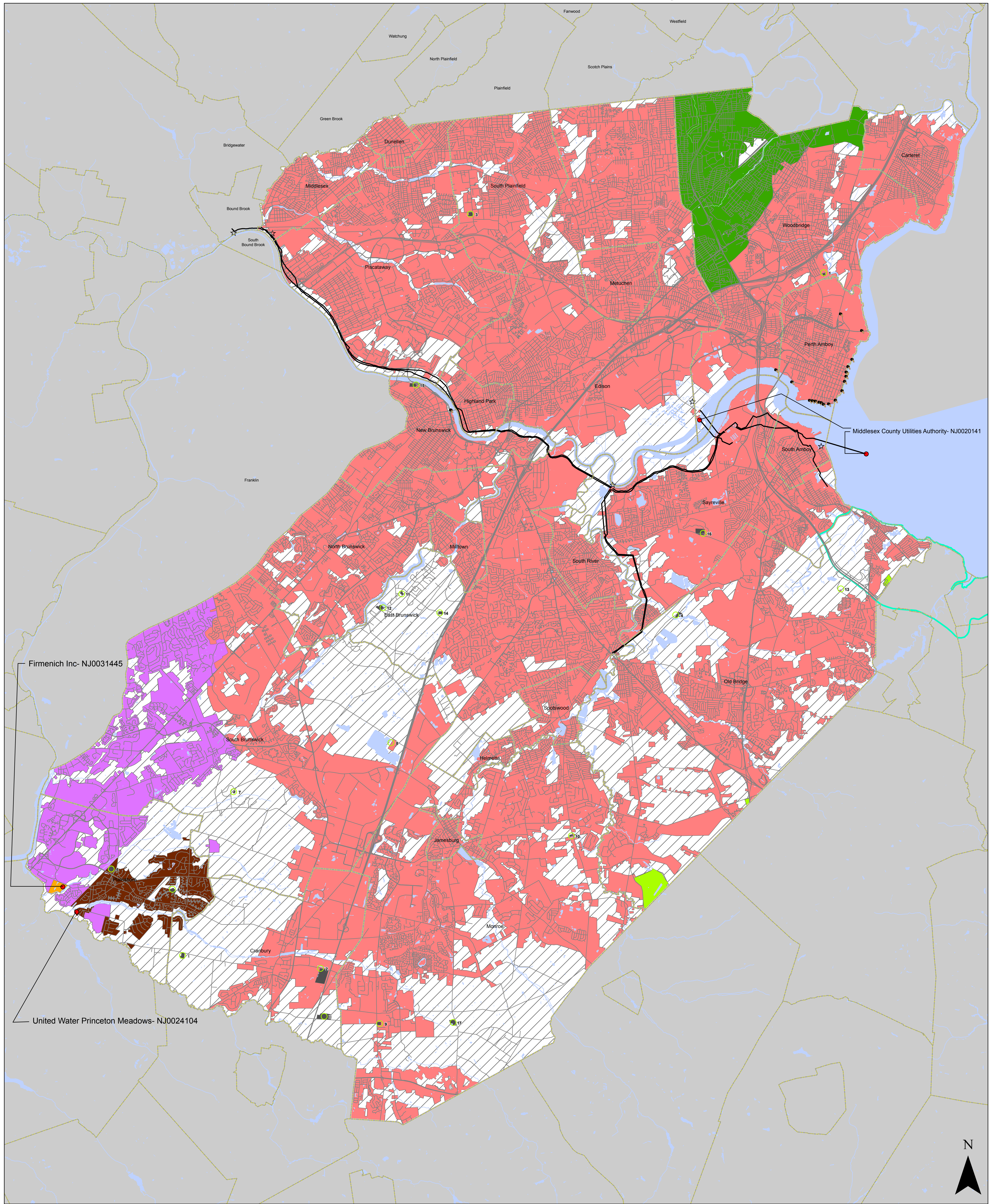


# Map 3 Middlesex County Future Wastewater Service Area

## Amending the Following Areawide Water Quality Management Plan: Lower Raritan - Middlesex County



**Legend**

- Future Service Areas of facilities that discharge to surface water
- Firmenich SSA
- Middlesex County Utility Authority
- Pine Brook STP
- Rahway Valley Sewerage Authority
- Stony Brook RSA - River Road STP
- United Water Princeton Meadows
- Future Service Areas of facilities that discharge to groundwater
- NJPDES Permitted Groundwater Discharge Locations
- Area outside WMP
- County Boundaries
- Municipal Boundaries
- Coastal Area Facility Review Act (CAFRA)
- Surface Water
- Combined Sewer Overflows
- Pump Station
- Major Roads
- Roads
- Trunk/Interceptor Sewers

Locations of future pump stations, major interceptors, and trunk sewers are being provided for general information only and will not serve as the basis for any future consistency determinations or permit reviews unless the pump station, major interceptor or trunk sewer is part of a State or federally funded project.

\*Pursuant to N.J.A.C. 7:15, Riparian zones are: 300 feet from top of bank (or centerline of a first order stream where no bank is apparent) for waters designated as Category One and all upstream tributaries within the same HUC 14; 150 feet for waters designated Trout Production and all upstream waters; 150 feet for water flowing through Trout Maintenance and all upstream waters within one linear mile as measured along the length of the regulated water; 150 feet for any segments of water flowing through an area that contains documented habitat for a threatened or endangered species of plant or animal, which is critically dependent on the surface water body for survival; and all upstream waters (including tributaries) within one linear mile as measured along the length of the surface water body; 150 feet for waters that run through acid-producing soils; and, 50 feet for all waters not designated as C1, trout waters, critically water dependent Threatened and/or Endangered Species Habitat, or associated with acid soils.

Surface waters that are designated Category One are listed in the Surface Water Quality Standards at N.J.A.C. 7:9B. The Department's "Surface Water Quality Standards" GIS data layer was utilized to determine these waters. The applicable 300 foot buffer has been applied to these waterways and removed from the proposed sewer service areas on the mapping. Lesser width buffers, have not been graphically removed from the sewer service area but are not proposed for sewer service. Jurisdictional determinations by the Department will be utilized to determine the extent of the sewer service area on individual lots.

\*All existing, new, or expanded industrial pretreatment facilities requiring Significant Indirect User (SIU) permits and/or Treatment Works Approvals, and which are located within the depicted sewer service area, are deemed to be consistent.

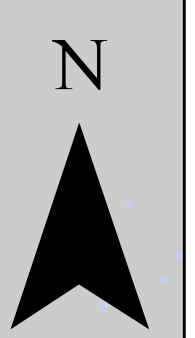
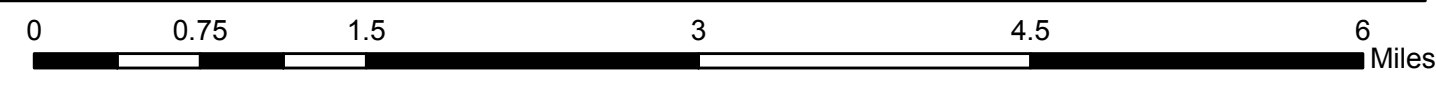
\*Pre-existing grant conditions and requirements (from Federal and State grants or loans for sewerage facilities) which provide for restriction of sewer service to environmentally sensitive areas, are unaffected by adoption of this document and compliance is required.

\*Development in areas mapped as wetlands, flood prone areas, suitable habitat for endangered and threatened species as identified on the Department's Landscape Maps of Habitat for Endangered, Threatened and Other Priority Wildlife as Rank 3, 4, and 5, Natural Heritage Priority Sites, riparian zones, steep slopes, or designated river areas may be subject to special regulation under Federal or State statutes or rules, and interested persons should check with the Department for the latest information. Any depiction of environmental features shall be for general information purposes only, and shall not be construed to define the legal geographic jurisdiction of such statutes or rules.

\*Areas located within the watershed of a Freshwater One (FW1) stream, as classified in the Surface Water Quality Standards, and/or that have Class 1-A ground water (Ground Water of Special Ecological Significance), as classified in the Ground Water Quality Standards, are identified as "Non-degradation water area based on the Surface Water Quality Standards at N.J.A.C. 7:9B, and/or the Ground Water Quality Standards at N.J.A.C. 7:9A." Non-degradation water areas shall be maintained in their natural state (set aside for posterity) and are subject to restrictions including, but not limited to, the following: 1) DEP will not approve any pollutant discharge to ground water nor approve any human activity which results in a degradation of natural quality except for the upgrade or continued operation of existing facilities serving existing development. For additional information please see the Surface Water Quality Standards at N.J.A.C. 7:9B, and/or the Ground Water Quality Standards at N.J.A.C. 7:9A.

NJPDES Permitted Surface Water Discharge Locations, NJDEP, 2010  
Septis\_01\_12\_13\_MCPD Staff, 2013  
NJPDES\_GWQ locations not proposed, NJDEP, 2009  
Network 2007 - NJOIT, 2007  
Coastal Area Facilities Review Act Boundary (polygon shapefile), New Jersey, NJDEP, 2005

Water Layer created by NJDEP from 2007 Lu/Lc  
Existat5, CDM, 1999  
Pump\_Clip, CDM, 1999  
Twinlines\_Clip, CDM, 1999  
New Jersey Department of Transportation Statewide Public Road



Item	Ground Water Discharge Facility	NJDES Permit No.
1	Cutters Dock Properties LLC	NJ0001295
2	66 Station Rd	NJ0020079
3	Ferro Corporation	NJ0034835
4	Runyon WTP	NJ0085472
5	Meadows at Middlesex	NJ0086819
6	Princeton Alliance Church	NJ0131697
7	South Brunswick YMCA	NJ0132471
8	Dallenbach Sand Company Inc.	NJG0063631
9	Applegarth Care Center	NJG0081639
10	Kestler Rest Home	NJG0103632
11	St Mary Coptic Church	NJG0109738
12	Lakeview Day Camp	NJG0131831
13	Cheesequake State Park	NJG0133221
14	Assembly of God Church	NJG0156019
15	Rutgers Cook/Douglas Campus	NJG0156671
16	Dupont Parlin Works	NJ0102121
17	Eagle River Day Camp LLC	NJG0167061
	Chinmaya Mission Tri-State Center Project	Proposed
	II Gateway Cathedral	Proposed

Submitted by: George Ververides, PP, AICP, Planning Director on behalf of the Middlesex County Board of Chosen Freeholders as Wastewater Planning Agency.  
Address: 40 Livingston Avenue, New Brunswick, NJ 08901  
Tel.: Alex Zakrewsky (732) 745-3499  
Fax: (732) 745-3011

Sources:  
Proposed DGW, MCPD, 2011  
DEP draft\_06\_05\_13, MCPD, 2013  
Area\_outside\_of\_WMP, MCPD Staff, 2010