

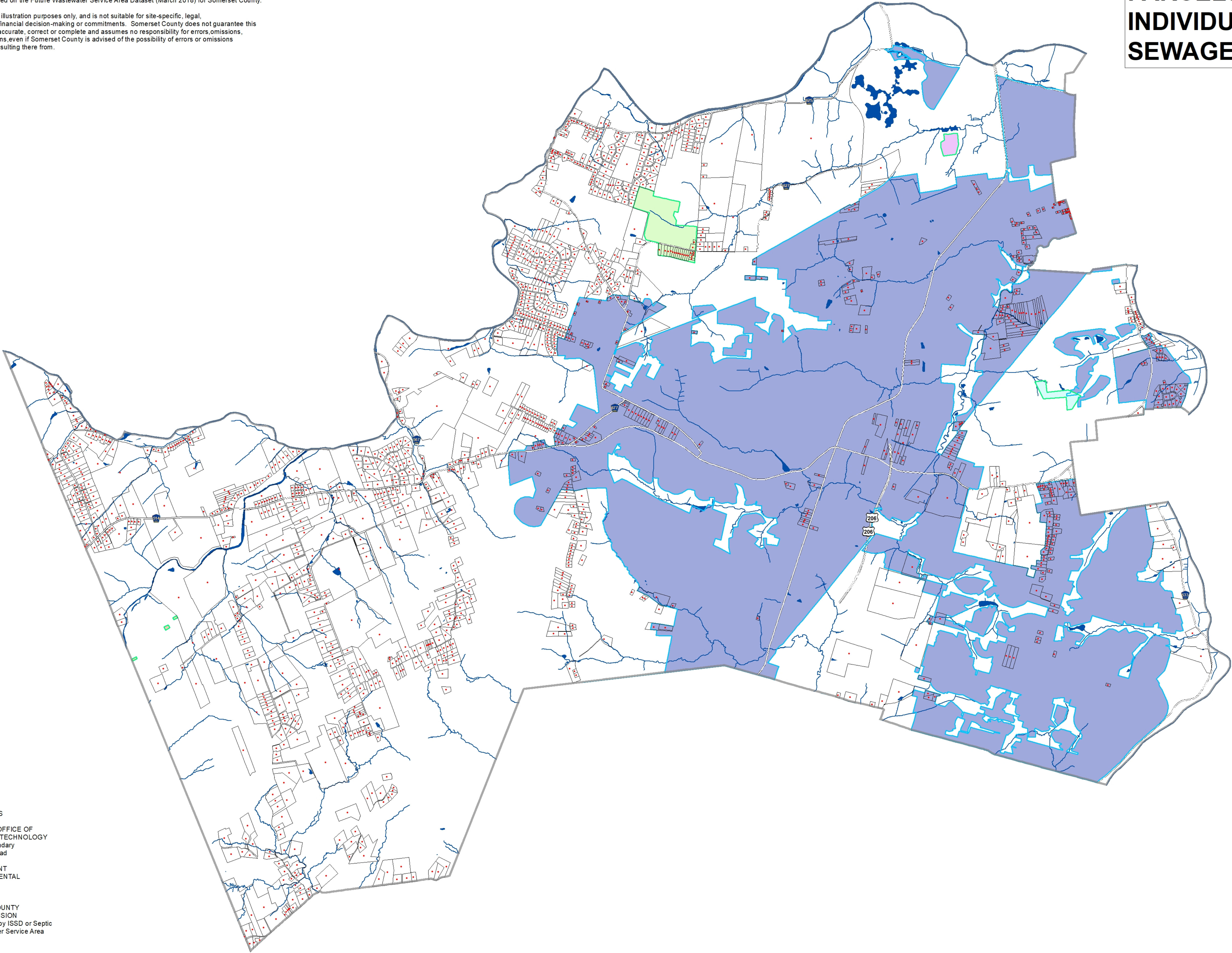
NOTES:

1. Parcels shown on this map as served by individual sub surface sewage disposal system (ISSDS), or septic system, are based on computer-assisted mass appraisal (CAMA) data acquired from the Somerset County Tax Administrator and made available through the Vital CAMA database distributed by Vital Communications, Inc.

2. This map is based on the Future Wastewater Service Area Dataset (March 2018) for Somerset County.

3. This map is for illustration purposes only, and is not suitable for site-specific, legal, regulatory and/or financial decision-making or commitments. Somerset County does not guarantee this information to be accurate, correct or complete and assumes no responsibility for errors, omissions, or misinterpretations, even if Somerset County is advised of the possibility of errors or omissions or the damages resulting there from.

HILLSBOROUGH TOWNSHIP
PARCELS SERVED BY
INDIVIDUAL SUBSURFACE
SEWAGE DISPOSAL SYSTEM



DATA SOURCES

NEW JERSEY OFFICE OF
INFORMATION TECHNOLOGY
- Municipal Boundary
- Highway or Road

NJ DEPARTMENT
OF ENVIRONMENTAL
PROTECTION
- Surface Water

SOMERSET COUNTY
PLANNING DIVISION
- Parcel served by ISSD or Septic
- Assigned Sewer Service Area

Parcel served by ISSDS (septic)

ASSIGNED SEWER SERVICE AREA

Groundwater Discharge
Surface Water Discharge

Amwell Valley Country Club
Duke Farms
Hillsborough Chase
The Royce Brook Golf Club
Somerset Raritan Valley SA

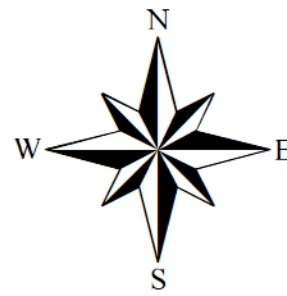
BASEMAP INFORMATION

Surface Water

Municipal Boundary

US Highway

County Road



0 1
Mile