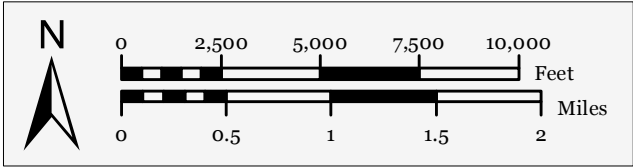
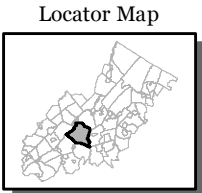
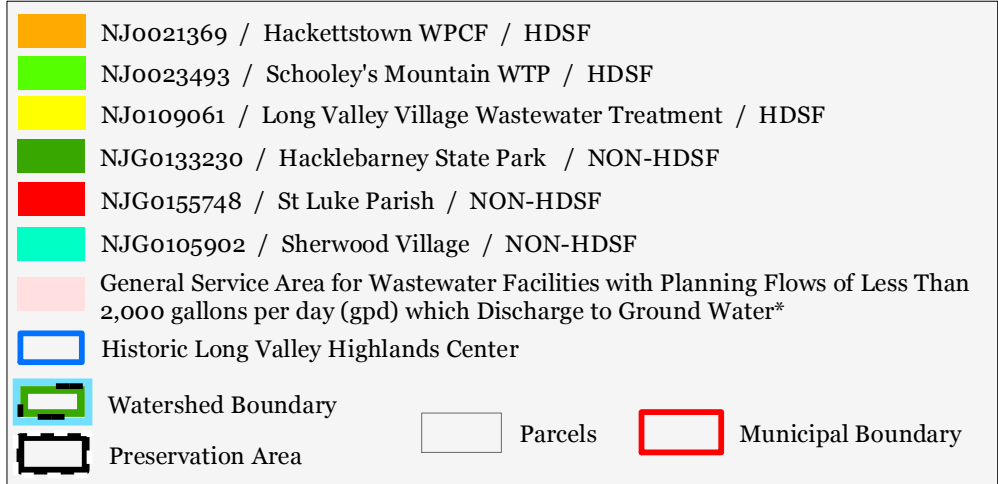


FIGURE WASHINGTON TOWNSHIP - 1
EXISTING SEWER SERVICE AREAS
Wastewater Management Plan
Washington Township, Morris County, New Jersey
June 22, 2012



The information contained on this map is the best available according to the Highlands Council. However, unintentional inaccuracies may occur, particularly where data or information is derived from sources other than the Highlands Council. The Highlands Council cannot be responsible for the misuse or misinterpretation of the information presented herein. Therefore, under no circumstances shall the State of New Jersey or specifically, the Highlands Council be liable for any actions taken or omissions made from reliance on any information contained herein from whatever source nor shall the State be liable for any other consequences from any such reliance. Additional sources of information may have been used to collect the GIS digital data, but this secondary product has not been verified by those sources.

*Wastewater flows in excess of 2,000 gpd shall not be permitted in this area unless the Highlands Council has determined that the discharge is consistent with the Regional Master Plan and the discharge is approved by NJDEP as a revision or amendment to this Wastewater Management Plan. This designation includes restriction of individual subsurface sewage disposal system development or subdivisions of 6 units or greater, unless approved under septic system density provisions of the Highlands Land Use Ordinance adopted by Washington Township pursuant to Highlands Council approval of its Petition for Plan Conformance.

Note: This figure incorporates by reference the Mapping Requirements pursuant to N.J.A.C. 7:15-5. See page 6 of the Washington Township Chapter of the Morris County Wastewater Management Plan.

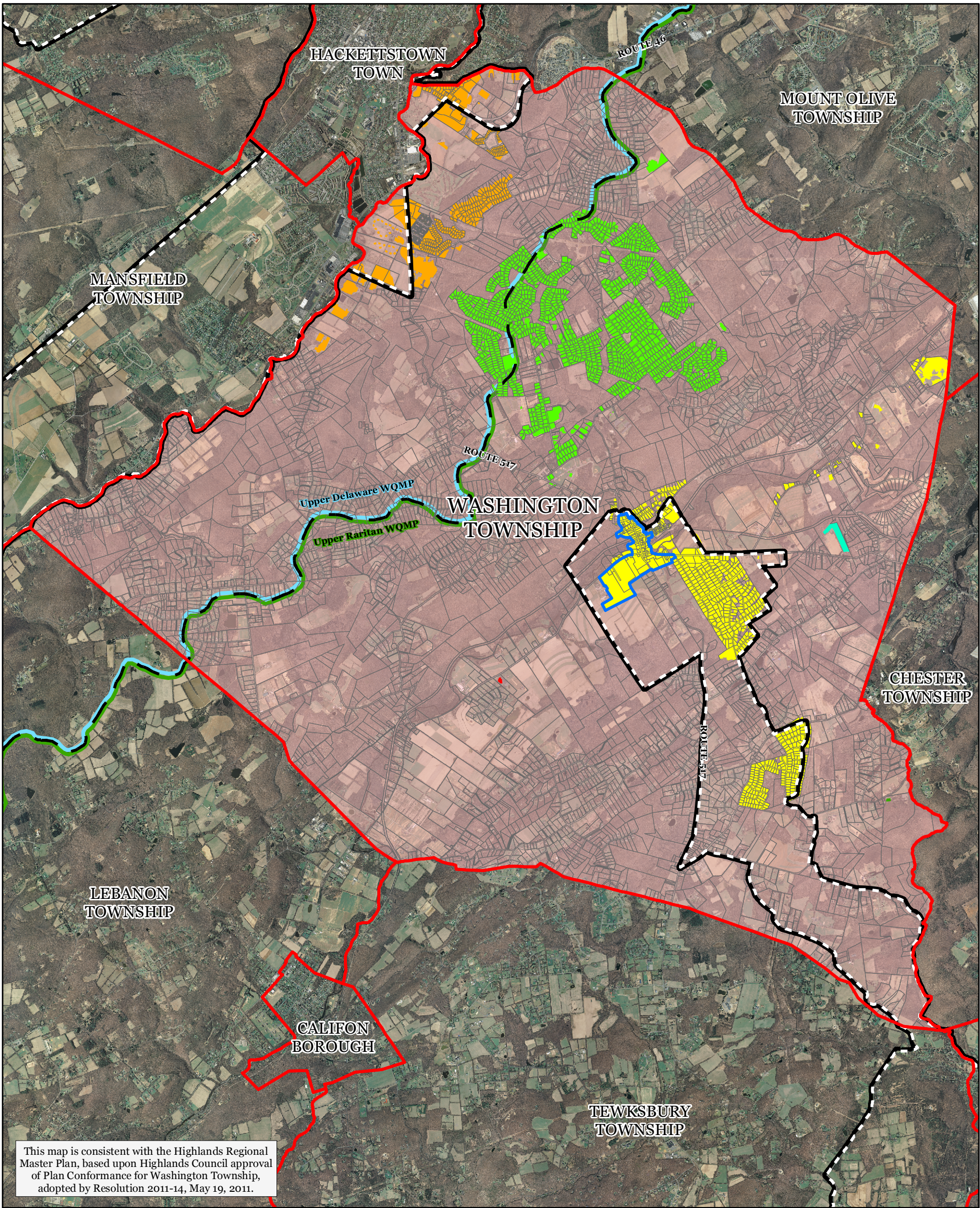
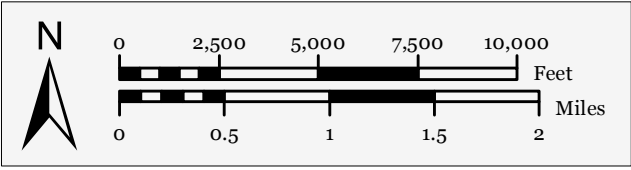
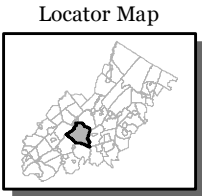
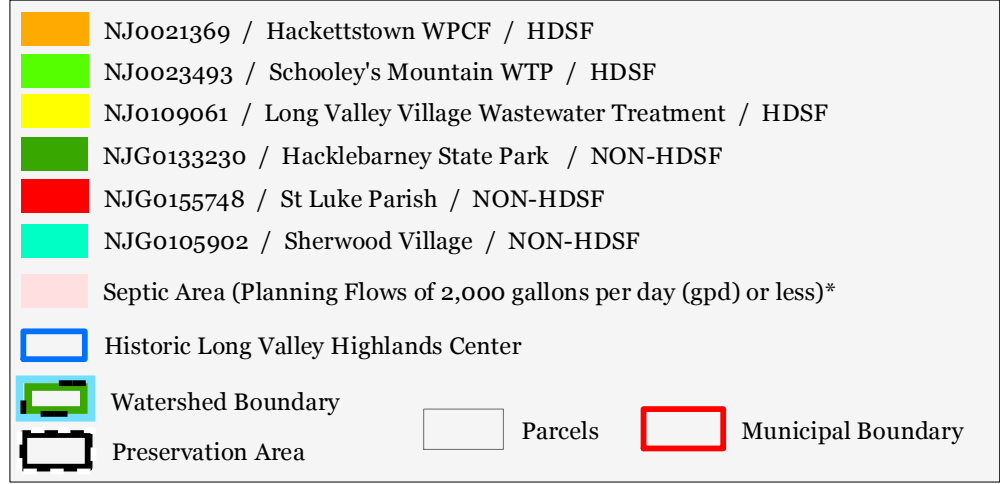


FIGURE WASHINGTON TOWNSHIP - 2
FUTURE SEWER SERVICE AREAS
Wastewater Management Plan
Washington Township, Morris County, New Jersey
June 22, 2012



The information contained on this map is the best available according to the Highlands Council. However, unintentional inaccuracies may occur, particularly where data or information is derived from sources other than the Highlands Council. The Highlands Council cannot be responsible for the misuse or misinterpretation of the information presented herein. Therefore, under no circumstances shall the State of New Jersey or specifically, the Highlands Council be liable for any actions taken or omissions made from reliance on any information contained herein from whatever source nor shall the State be liable for any other consequences from any such reliance. Additional sources of information may have been used to collect the GIS digital data, but this secondary product has not been verified by those sources.

*Wastewater flows in excess of 2,000 gpd shall not be permitted in this area unless the Highlands Council has determined that the discharge is consistent with the Regional Master Plan and the discharge is approved by NJDEP as a revision or amendment to this Wastewater Management Plan. This designation includes restriction of individual subsurface sewage disposal system development or subdivisions of 6 units or greater, unless approved under septic system density provisions of the Highlands Land Use Ordinance adopted by Washington Township pursuant to Highlands Council approval of its Petition for Plan Conformance.

Note: This figure incorporates by reference the Mapping Requirements pursuant to N.J.A.C. 7:15-5. See page 6 of the Washington Township Chapter of the Morris County Wastewater Management Plan.

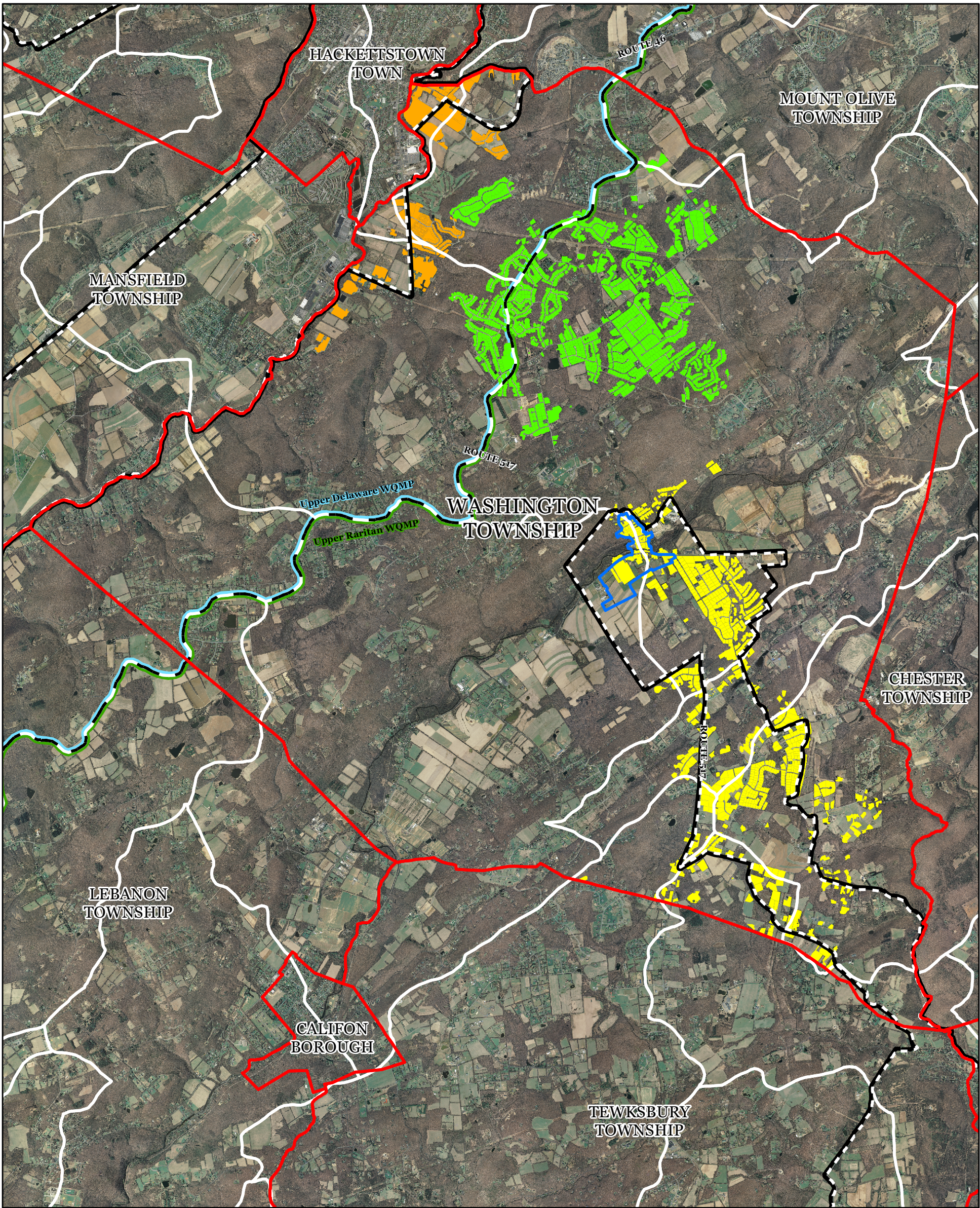
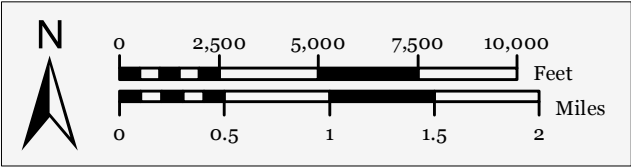
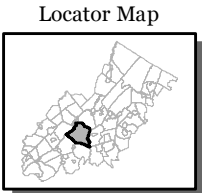


FIGURE WASHINGTON TOWNSHIP - 3
PUBLIC COMMUNITY WATER SYSTEMS
Wastewater Management Plan
Washington Township, Morris County, New Jersey
June 22, 2012



Public Community Water Systems Existing Area Served

- 2108001 / Hackettstown MUA / Facility #56
- 1438004 / Washington Township MUA (Schooley Mtn) / Facility #33
- 1438003 / Washington Township MUA (Hager) / Facility #33
- Historic Long Valley Highlands Center
- Municipal Boundary
- Preservation Area
- HUC14 Subwatersheds
- Watershed Boundary

The information contained on this map is the best available according to the Highlands Council. However, unintentional inaccuracies may occur, particularly where data or information is derived from sources other than the Highlands Council. The Highlands Council cannot be responsible for the misuse or misinterpretation of the information presented herein. Therefore, under no circumstances shall the State of New Jersey or specifically, the Highlands Council be liable for any actions taken or omissions made from reliance on any information contained herein from whatever source nor shall the State be liable for any other consequences from any such reliance. Additional sources of information may have been used to collect the GIS digital data, but this secondary product has not been verified by those sources.

Note: This figure incorporates by reference the Mapping Requirements pursuant to N.J.A.C. 7:15-5. See page 6 of the Washington Township Chapter of the Morris County Wastewater Management Plan.