

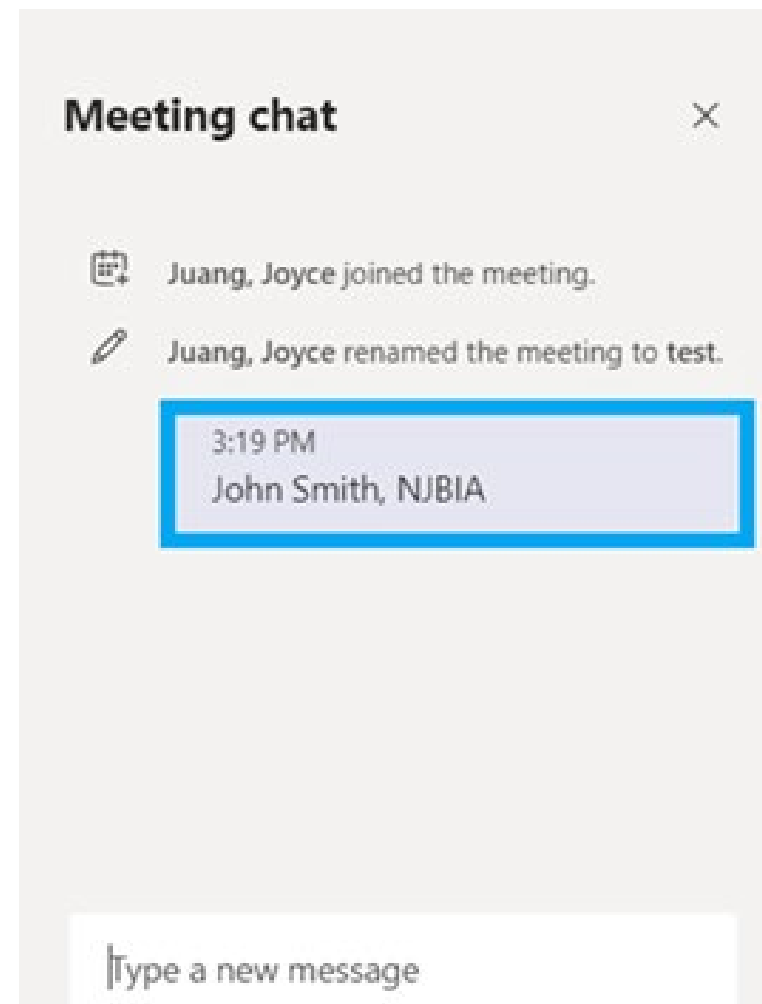
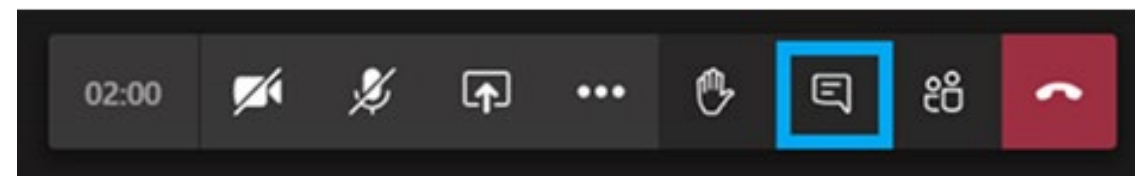
Welcome to the
**October 9, 2024
CVP/SRAG Meeting**



In-House Rules Friendly Reminder

▶ Attendance:

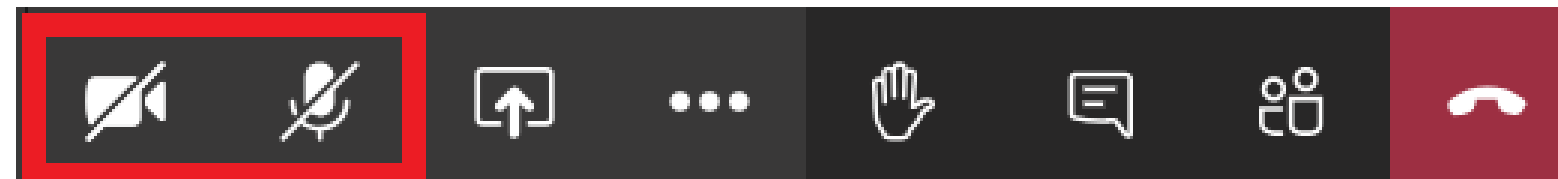
- ▶ Please enter your first and last name and organization you represent in the chat box in lieu of sign-in sheet.
- ▶ *If you have dialed into the meeting, please email Samantha (Samantha.gleisner@dep.nj.gov). We are unable to identify the names of dialed in attendees.*



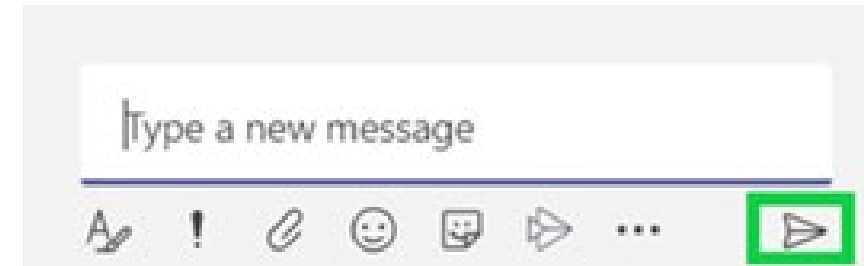
In-House Rules Friendly Reminder

▶ Questions/Speaking Etiquette:

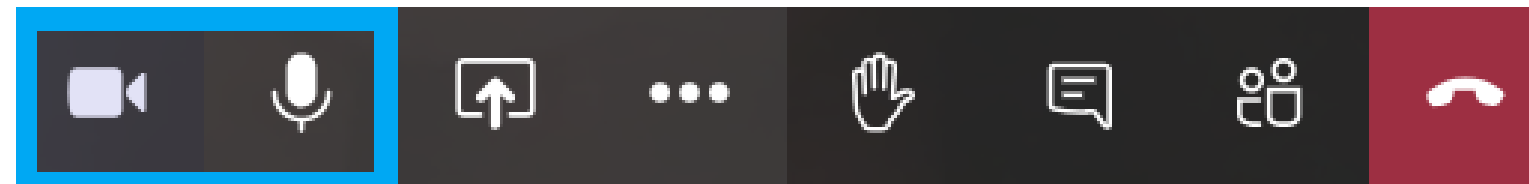
- ▶ Please make sure your microphone is muted and your camera is off.



- ▶ To request the opportunity to ask a question, please enter your name and affiliation in the chat box.



- ▶ When called on to speak, you may un-mute yourself and, if you would like, turn on your camera.

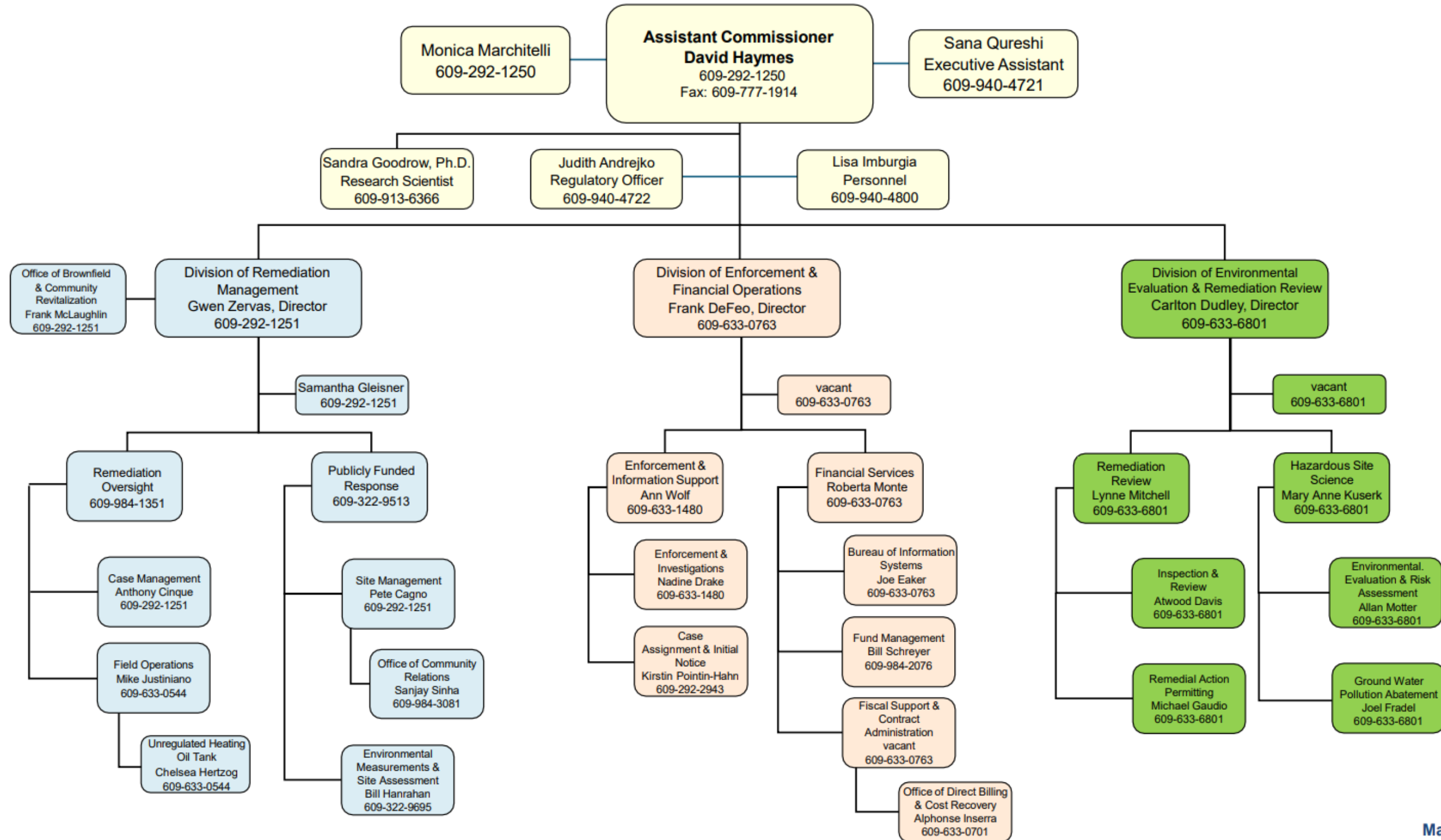


- ▶ When you have finished speaking, please re-mute yourself and turn off your camera.

CSRR Reorganization Update

David Haymes, Assistant Commissioner
Contaminated Site Remediation & Redevelopment
David.Haymes@dep.nj.gov

CONTAMINATED SITE REMEDIATION & REDEVELOPMENT



May 29, 2025

The background features abstract, overlapping geometric shapes in various shades of blue, ranging from light sky blue to deep navy blue. These shapes are primarily located on the right side of the slide, creating a modern, dynamic feel. The central area is a plain, light grayish-white.

Questions?

SRPLB Update

Dana Haymes, SRPLB

Questions?

Site Remediation Metrics

Gwen Zervas / Joe Eaker

Director of the Division of Remediation Management

Gwen.Zervas@dep.nj.gov

The background features abstract, overlapping geometric shapes in various shades of blue, ranging from light sky blue to deep navy blue. These shapes are primarily located on the right side of the slide, creating a modern, dynamic feel. The central area is a plain, light grayish-white.

Questions?

Technical Guidance

Sana Qureshi

Office of the Assistant Commissioner

Sana.Qureshi@dep.nj.gov

Technical Guidance Update		
New document development	Tentative Date	Document
Field Sampling Procedures Manual	Posted!	Final
Updating existing documents	Tentative Date	
SI/RI/RA Soil Technical Guidance	End- 2024	
Technical Guidance for the Attainment of Remediation Standards and Site-Specific Criteria	Version 3.0 posted 08/2024	
Historic Fill	2025	
Technical Impracticability (TI)	Early 2025	
Analytical Methods	2025	
Landfills Investigation Technical Guidance	2025	

The background of the slide is composed of several overlapping triangles in various shades of blue, ranging from light sky blue to dark navy blue. These triangles are arranged in a way that creates a sense of depth and movement, particularly on the right side of the slide. The left side is mostly white, providing a clean space for the text.

Questions?

Training Update

Kristine Iazzetta, CSRR Training Committee

Bureau of Case Management

Kristine.Iazzetta@dep.nj.gov

Upcoming Training Events

- ▶ Rutgers Case Study
 - ▶ January 14th and 15th
 - ▶ January 28th and 29th

The background features abstract, overlapping geometric shapes in various shades of blue, ranging from light sky blue to deep navy blue. These shapes are primarily located on the right side of the slide, creating a modern, dynamic feel. The central area is a plain, light grayish-white.

Questions?

Rules Update

Judith Andrejko

Office of the Assistant Commissioner

Judith.Andrejko@dep.nj.gov

The background features abstract, overlapping geometric shapes in various shades of blue, ranging from light sky blue to deep navy blue. These shapes are primarily located on the right side of the slide, creating a modern, layered effect. The rest of the slide is a solid, very light blue-grey color.

Questions?

Remedial Action Permit Update

Michael Gaudio

Bureau Chief of Remedial Action Permitting

Michael.Gaudio@dep.nj.gov

RAP Improvements

- ▶ Instructions for LSRP Supplemental Certification for Initial Soil RAP Application - posted on 9/12/24
- ▶ Instructions for LSRP Supplemental Certification for Initial Ground Water (Monitored Natural Attenuation) RAP Application - posted on 9/12/24
- ▶ Instructions for Prioritized Initial RAP Application Addendum - posted on 9/17/24
- ▶ Notice of Incomplete Checklist for Initial RAP Applications - to be posted soon

Initial RAP Application Metrics for LSRP Supplemental Certifications and Prioritized Addendums

- ▶ LSRP Supplemental Certification for Initial Soil RAP Application
- ▶ LSRP Supplemental Certification for Initial Ground Water (Monitored Natural Attenuation) RAP Application
- ▶ Prioritized Initial RAP Application Addendum

The background features abstract, overlapping geometric shapes in various shades of blue, ranging from light sky blue to deep navy blue. These shapes are primarily located on the right side of the slide, creating a modern, dynamic feel. The central area is a plain, light grayish-white.

Questions?

**Meetings in 2025 will be held
from 9:00 AM - Noon:**

February 12, 2025

June 11, 2025

October 15, 2025