

Ecological Review Update

Atwood Davis, Chief

Bureau of Inspection & Review

Atwood.Davis@dep.nj.gov

Allan Motter, Section Chief

Bureau of Environmental Evaluation & Risk Assessment

Allan.Motter@dep.nj.gov

Ecological Evaluation Review Process



Ecological Evaluation (EE) – Submitted to BCAIN – Administratively Complete

EE Inspected by BIR – Determination if Review Required

EE Reviewed by BIR – Determination if Referral to BEERA Required

EE Reviewed by BEERA

All Ecological Risk Assessments (ERA) referred to BEERA

Ecological Evaluation Peer Review Process



Ecological Evaluation (EE) – Submitted to BCAIN – Administratively Complete

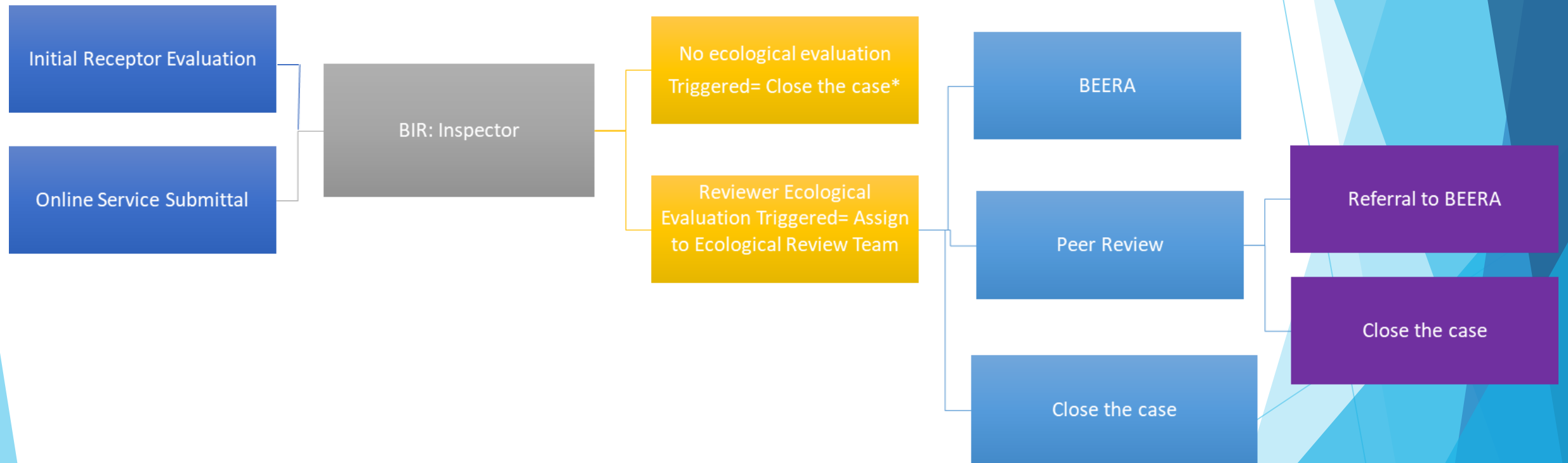
EE Inspected by BIR – Determination if Review Required

EE Reviewed by BIR – Presented Directly to BEERA in Peer Review Session

Outcome:

- Closed without further review
- Closed after reviewer requests additional information from LSRP
- Referred to BEERA for full review

Ecological Evaluation Peer Review Process



Ecological Evaluation Peer Review Process



Peer Review Process started February 19, 2020

NJDEP peer reviewed a total of 192 cases in 73 sessions

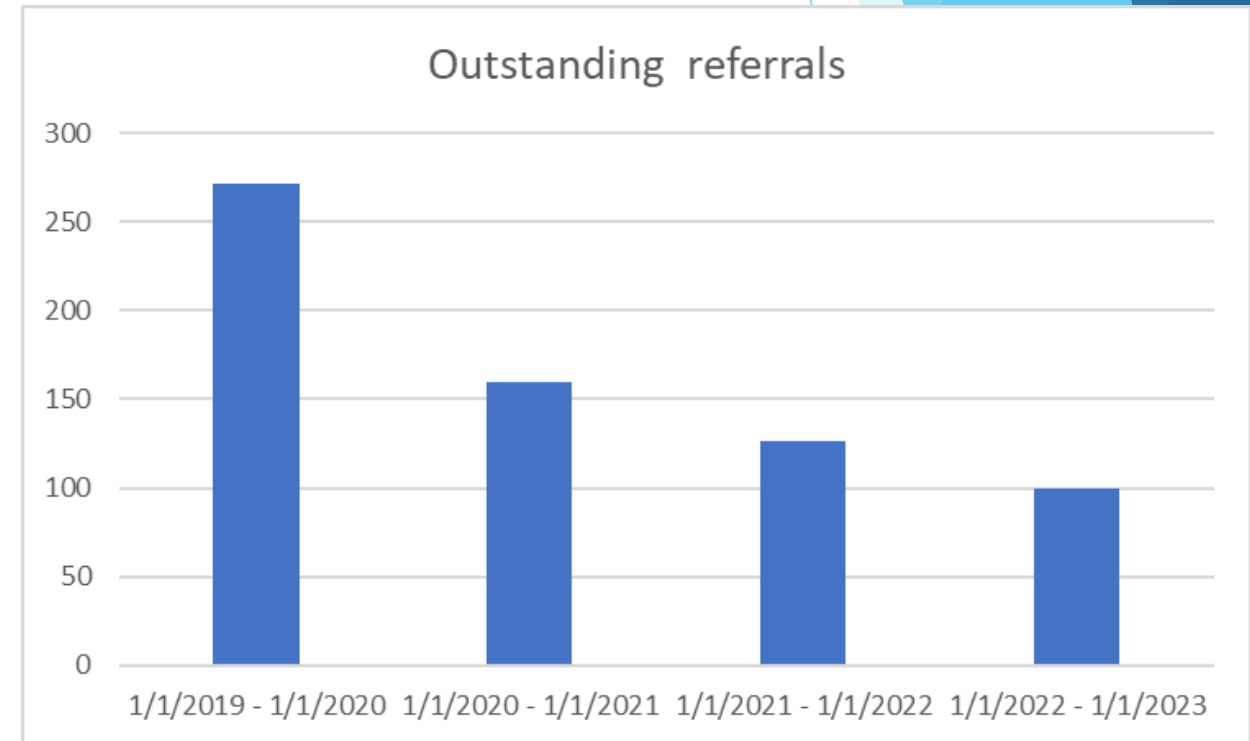
- 134 were either resolved immediately, or with BIR requesting additional information from the LSRP
- 58 cases needed to be referred for full review

Ecological Evaluation Peer Review Process



Peer Review Process started February 19, 2020

Time period	Outstanding referrals
1/1/2019 - 1/1/2020	272
1/1/2020 - 1/1/2021	160
1/1/2021 - 1/1/2022	126
1/1/2022 - 1/1/2023	100



*Reduced backlog 63%

The background features abstract, overlapping geometric shapes in various shades of blue, ranging from light sky blue to deep navy blue. These shapes are primarily located on the right side of the slide, creating a modern, layered effect. The central area of the slide is a plain, light grayish-white.

Questions?