

Concept Plan LSP-North



Where We're At:

The LSP-North Concept Plan is the result of the NJDEP Public Comment process for the 2023 Amenity Development Recommendations Plan. Public Comment has informed the Concept Plan's development. The Concept Plan is the next step in the process of identifying priority projects, leading to implementation.

STATION 2: FOCUS AREA - LSP-NORTH

Station

#2

Liberty State Park Revitalization Program: LSP-North

OPEN HOUSE: September 28th, 2024 - 1 Audrey Zapp Drive, Jersey City, NJ

Liberty State Park - North (Detailed Design) +
South (Holistic Long-Term Southern Area and
Waterfront Master Plan)



NEW JERSEY
DEPARTMENT OF
ENVIRONMENTAL
PROTECTION

with:

ARUP

WRT

WXY

Vision

Reid + Brown

Studio City

MATRIX

NEW WORLD

PACA

HKA

Programming LSP-North

STATION 2: FOCUS AREA - LSP-NORTH

Station

#2

Liberty State Park - North (Detailed Design) +
South (Holistic Long-Term Southern Area and
Waterfront Master Plan)

Liberty State Park Revitalization Program: LSP-North

OPEN HOUSE: September 28th, 2024 - 1 Audrey Zapp Drive, Jersey City, NJ



NEW JERSEY
DEPARTMENT OF
ENVIRONMENTAL
PROTECTION

with:

ARUP

WRT

WXY

Vision

Reid + Smith

Studio

MATRIX

NEW WORLD

PACA

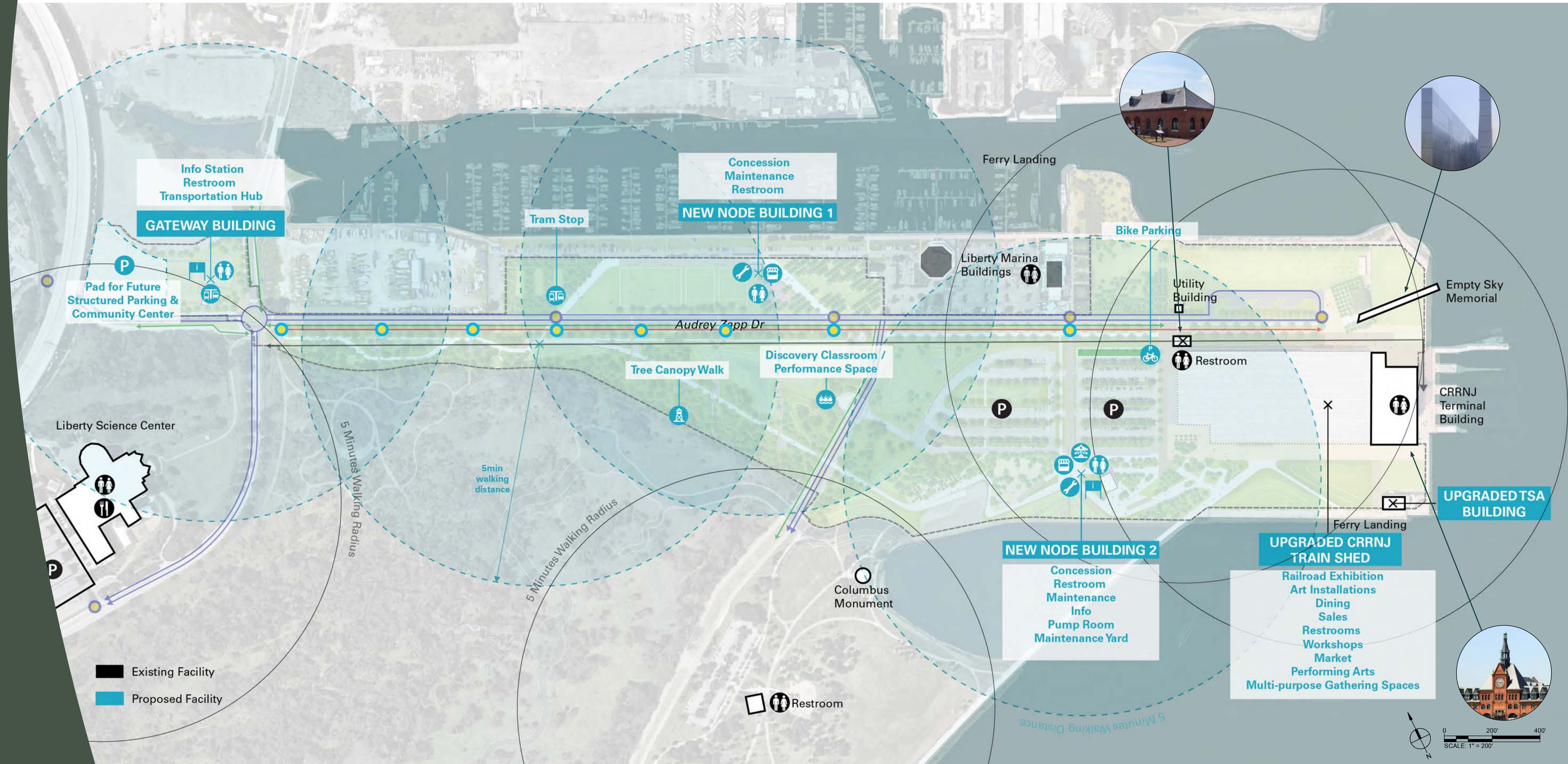
HKA



Where would you like to spend your time?

Please share your thoughts on a post-it here or on the image above:

Built Systems LSP-North



STATION 2: FOCUS AREA - LSP-NORTH

Station

#2

How do the existing facilities contribute to your experience? What else would you like to see here? How can new facilities (restrooms, shade, concessions, overlooks, other) enhance your experience of the park?

Please share your thoughts on a post-it here:

Liberty State Park Revitalization Program: LSP-North

OPEN HOUSE: September 28th, 2024 - 1 Audrey Zapp Drive, Jersey City, NJ

Liberty State Park - North (Detailed Design) +
 South (Holistic Long-Term Southern Area and
 Waterfront Master Plan)



NEW JERSEY
 DEPARTMENT OF
 ENVIRONMENTAL
 PROTECTION

with:

ARUP

WRT

WXY

Vision

Reimagined

Studio

MATRIX

NEWORLD

PACA

HKA

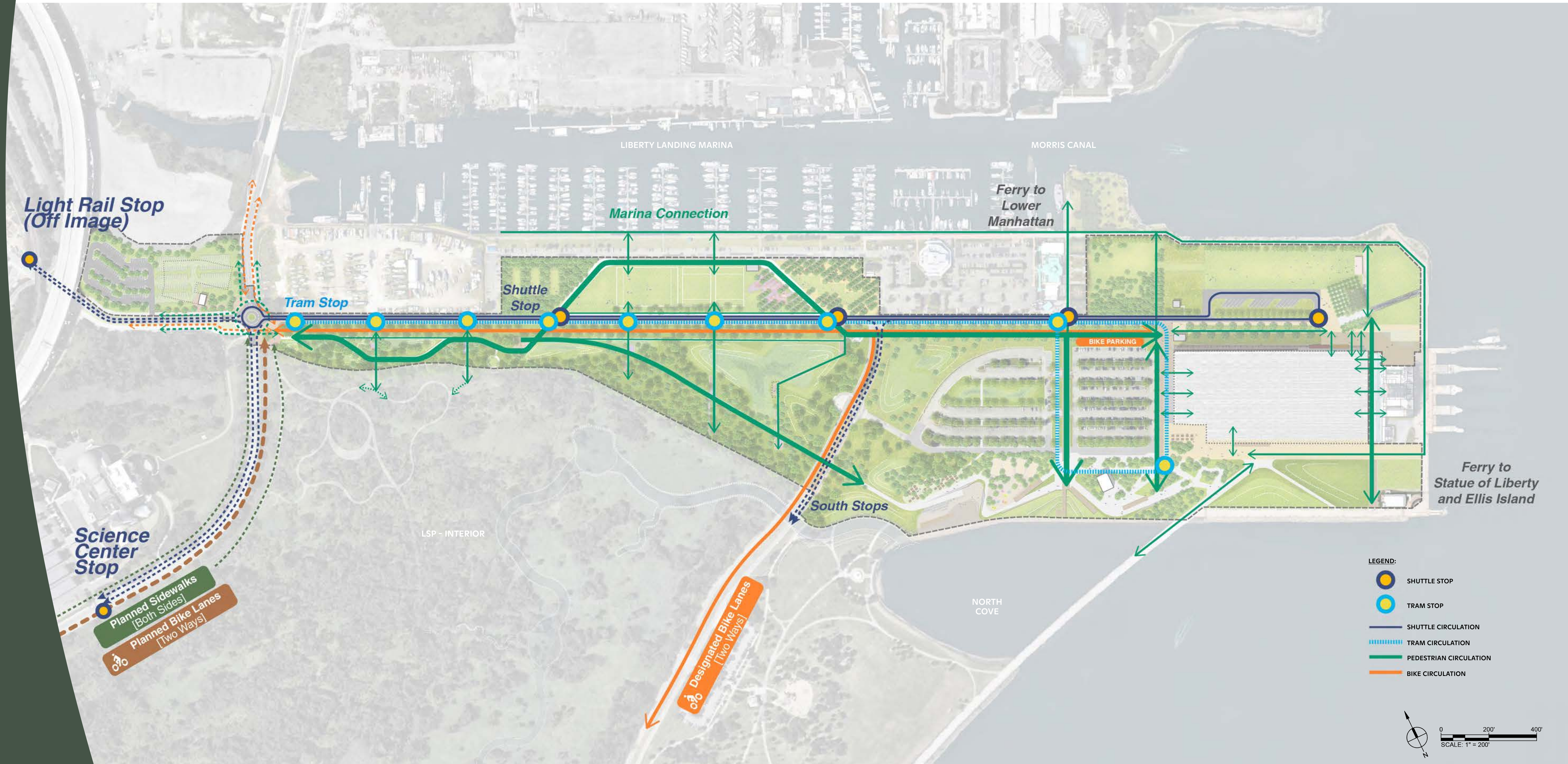
Circulation Systems LSP-North

STATION 2: FOCUS AREA - LSP-NORTH

Station

#2

Liberty State Park - North (Detailed Design) +
South (Holistic Long-Term Southern Area and
Waterfront Master Plan)



Do the proposed pedestrian, bike, and transit systems get you where you want to go?

Please share your thoughts on a post-it here or on the image above:

Liberty State Park Revitalization Program: LSP-North

OPEN HOUSE: September 28th, 2024 - 1 Audrey Zapp Drive, Jersey City, NJ



NEW JERSEY
DEPARTMENT OF
ENVIRONMENTAL
PROTECTION

with:

ARUP

WRT

WXY

Vision

Realtek

Studio

MATRIX

NEWORLD

PACA

HKA

Active Recreation Opportunities LSP-North

STATION 2: FOCUS AREA - LSP-NORTH

What We Heard:

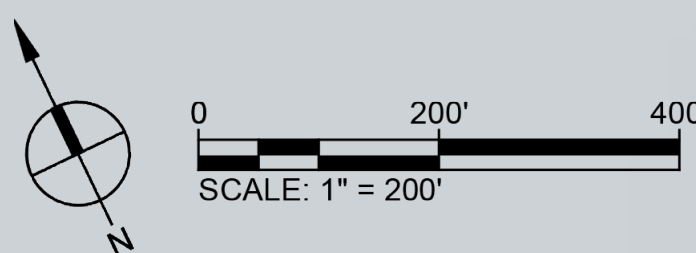
We've heard in past Open Houses, Task Force Meetings, and Surveys that flexibility should be a priority for active recreation spaces in the North. We've listened and have adjusted the active recreation in the North to emphasize informal and unstructured play.

Priority on Flexibility:

The concept plan emphasizes flexible active recreation. Lawn spaces can be used for informal active recreation as well as performances and gatherings. New play features and spaces offer play opportunities for all ages. Volleyball courts are integrated within the beach area.



LEGEND:
 FLEX LAWN
 PLAY
 COURT



Station

#2

Liberty State Park Revitalization Program: LSP-North

OPEN HOUSE: September 28th, 2024 - 1 Audrey Zapp Drive, Jersey City, NJ

Liberty State Park - North (Detailed Design) +
South (Holistic Long-Term Southern Area and
Waterfront Master Plan)



NEW JERSEY
DEPARTMENT OF
ENVIRONMENTAL
PROTECTION

with:

ARUP

WRT

WXY

Vision

Reid

Studio

MATRIX

NEWORLD

PACA

HKA

LSP-North Woodland Walk



What would you like to do and see when walking in the woods?

Please share your thoughts on a post-it note here :

- Brilliant fall foliage
- Habitat watching

EXISTING

NEW PLANTING

PLAY

GATHER

CIRCULATION



How it looks today



What do you think of this vision for the Woodland Walk? Is there anything you want to change?

Please share your thoughts on a post-it note here or on the image above:

Station

#2

Liberty State Park Revitalization Program: LSP-North

OPEN HOUSE: September 28th, 2024 - 1 Audrey Zapp Drive, Jersey City, NJ



NEW JERSEY
DEPARTMENT OF
ENVIRONMENTAL
PROTECTION

with: ARUP



WXY



with: B&B design



MATRIX

NEW WORLD PACA HKA

LSP-North Marina Green



What do you like to do at a picnic with friends and family?

Please share your thoughts on a post-it note here :

- Grilling!
- Playing music!

EXISTING

NEW PLANTING

PLAY

GATHER

CIRCULATION



How it looks today



What do you think of this vision for the Marina Green? Is there anything you want to change?

Please share your thoughts on a post-it note here or on the image above:

STATION 2: FOCUS AREA - LSP-NORTH

Station

#2

Liberty State Park Revitalization Program: LSP-North

OPEN HOUSE: September 28th, 2024 - 1 Audrey Zapp Drive, Jersey City, NJ



NEW JERSEY
DEPARTMENT OF
ENVIRONMENTAL
PROTECTION

with: ARUP



WXY



with: B&B



MATRIX

NEW WORLD PACA HKA

LSP-North North Cove



What makes for a good day at the beach?

Please share your thoughts on a post-it note here :

- Lounging!
- Sunbathing!

EXISTING

NEW PLANTING

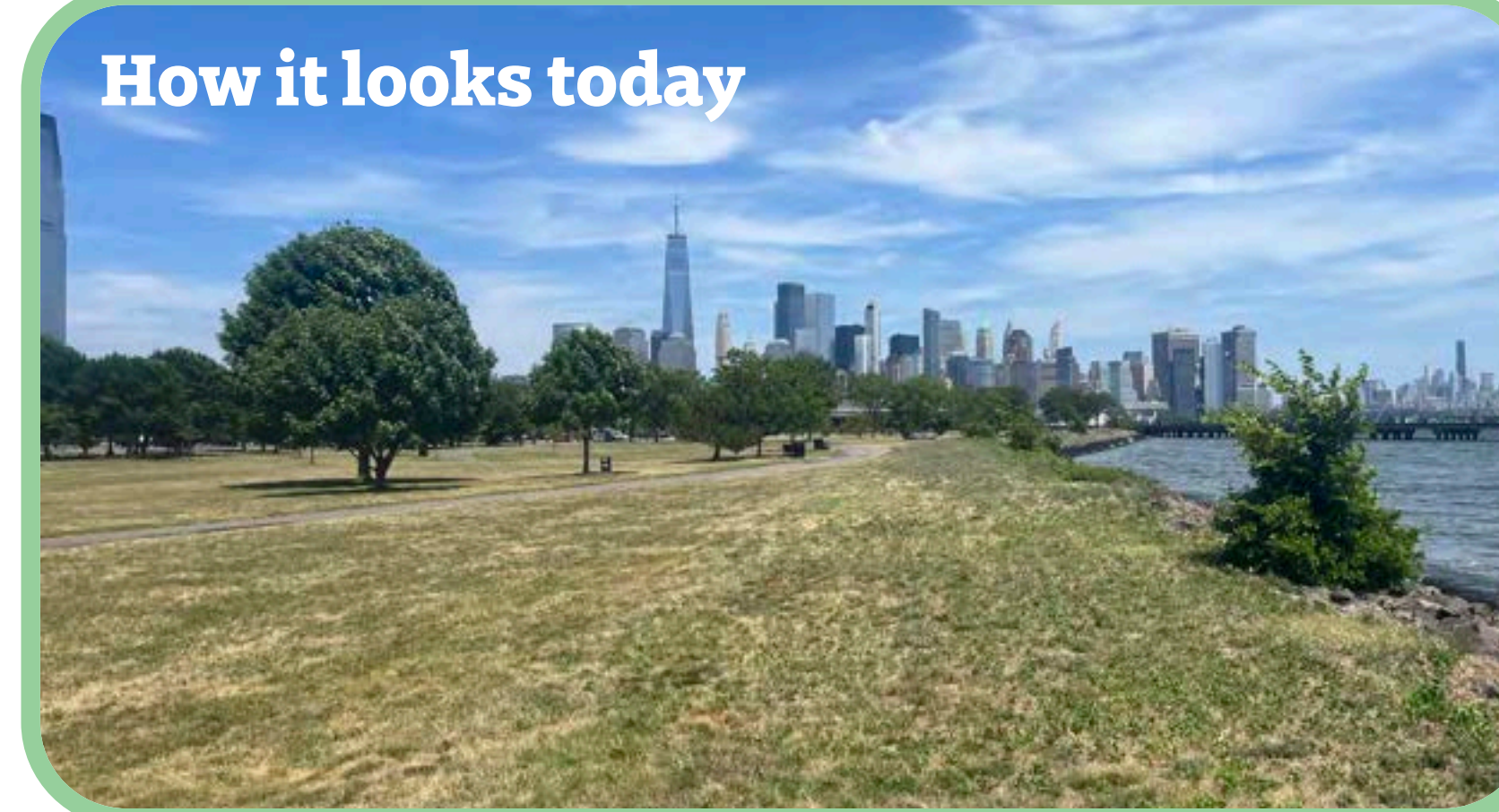
PLAY

GATHER

CIRCULATION



How it looks today



What do you think of this vision for the North Cove? Is there anything you want to change?

Please share your thoughts on a post-it note here or on the image above:

STATION 2: FOCUS AREA - LSP-NORTH

Station

#2

Liberty State Park Revitalization Program: LSP-North

OPEN HOUSE: September 28th, 2024 - 1 Audrey Zapp Drive, Jersey City, NJ

Liberty State Park - North (Detailed Design) +
South (Holistic Long-Term Southern Area and
Waterfront Master Plan)



NEW JERSEY
DEPARTMENT OF
ENVIRONMENTAL
PROTECTION

with:

ARUP

WRT

WXY

Vision

Reid + Smith

Studio City

MATRIX

NEW WORLD

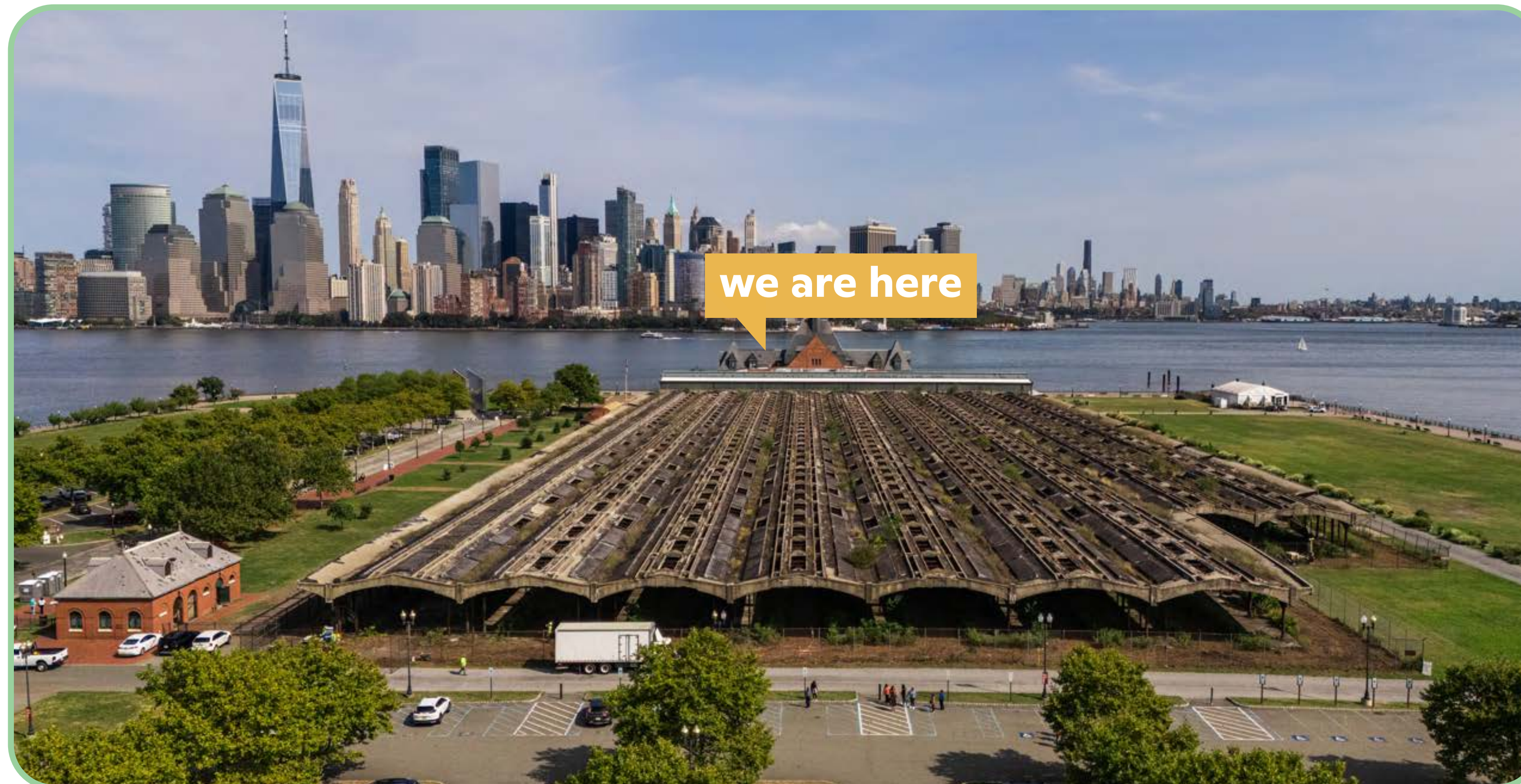
PACA

HIK

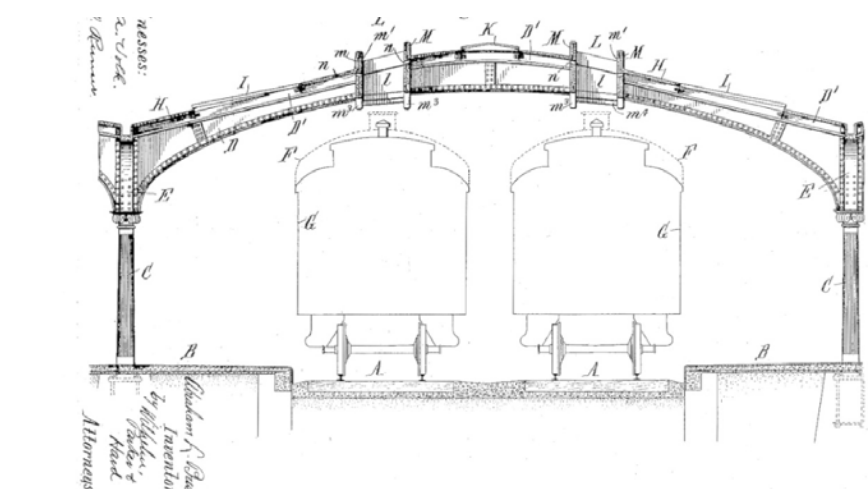
LSP-North

The Train Shed

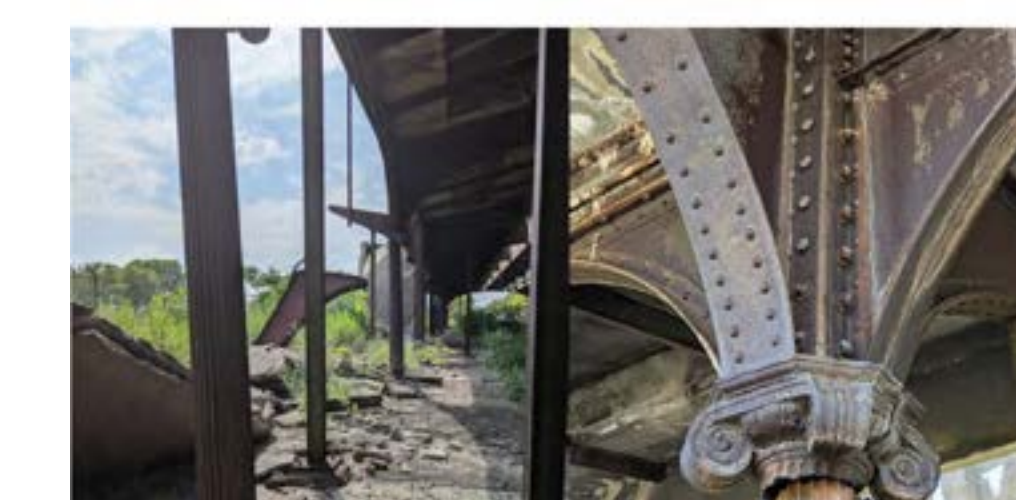
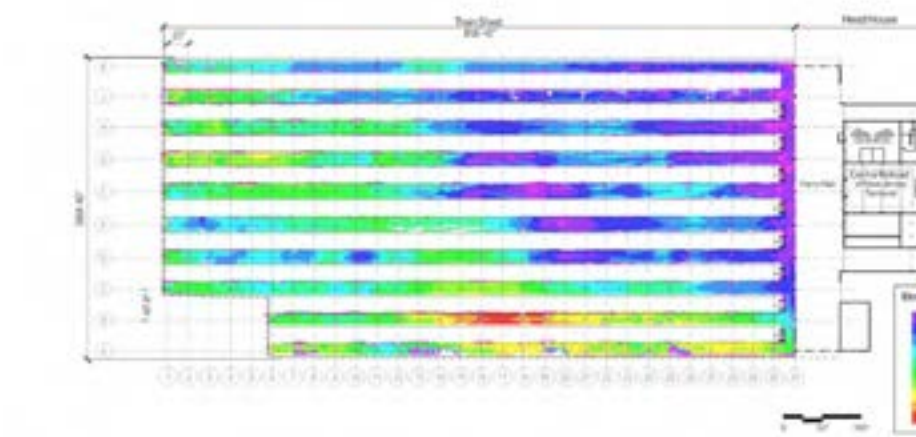
The Work Underway



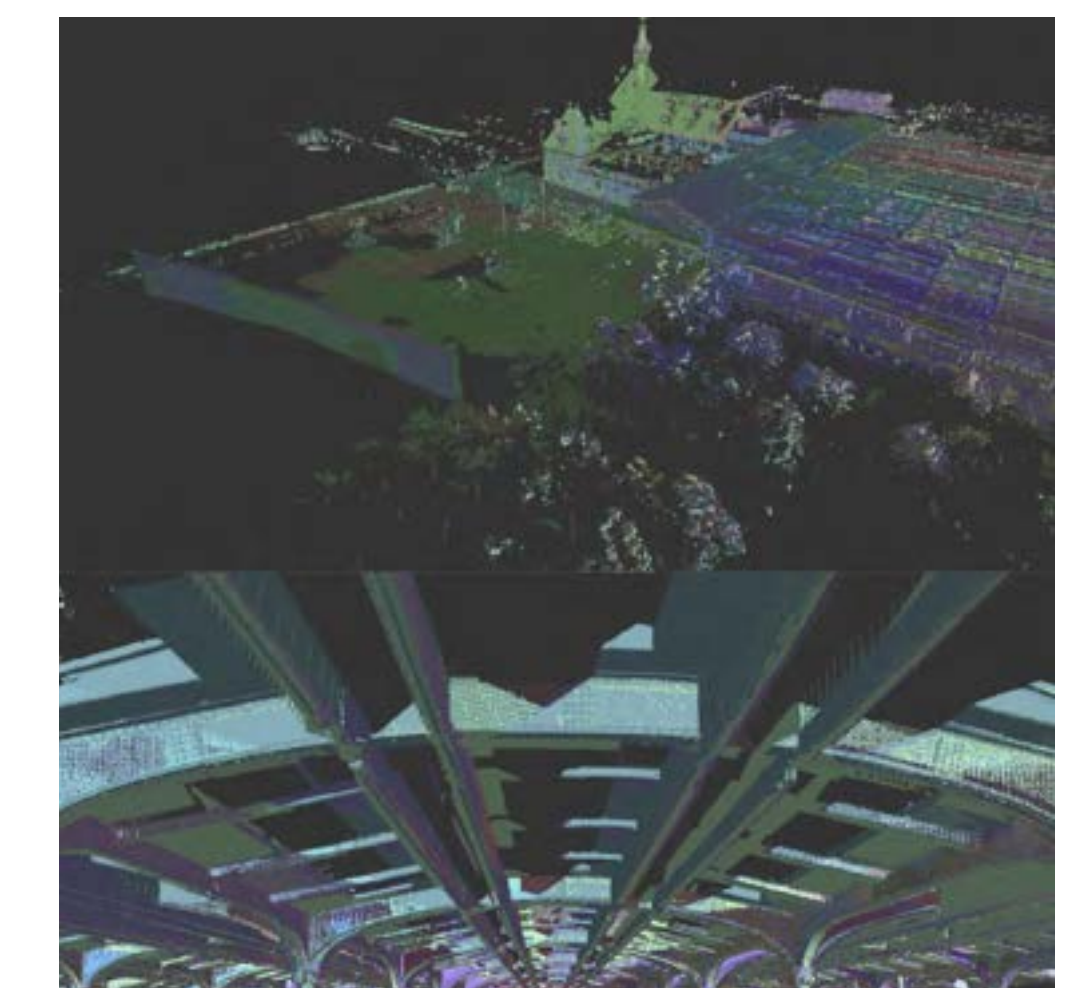
What are we doing to assess the current structure?



Reviewing historical data and documentation including patents for the shed type, historic drawings and articles regarding shed construction, as well previous condition assessment reports.



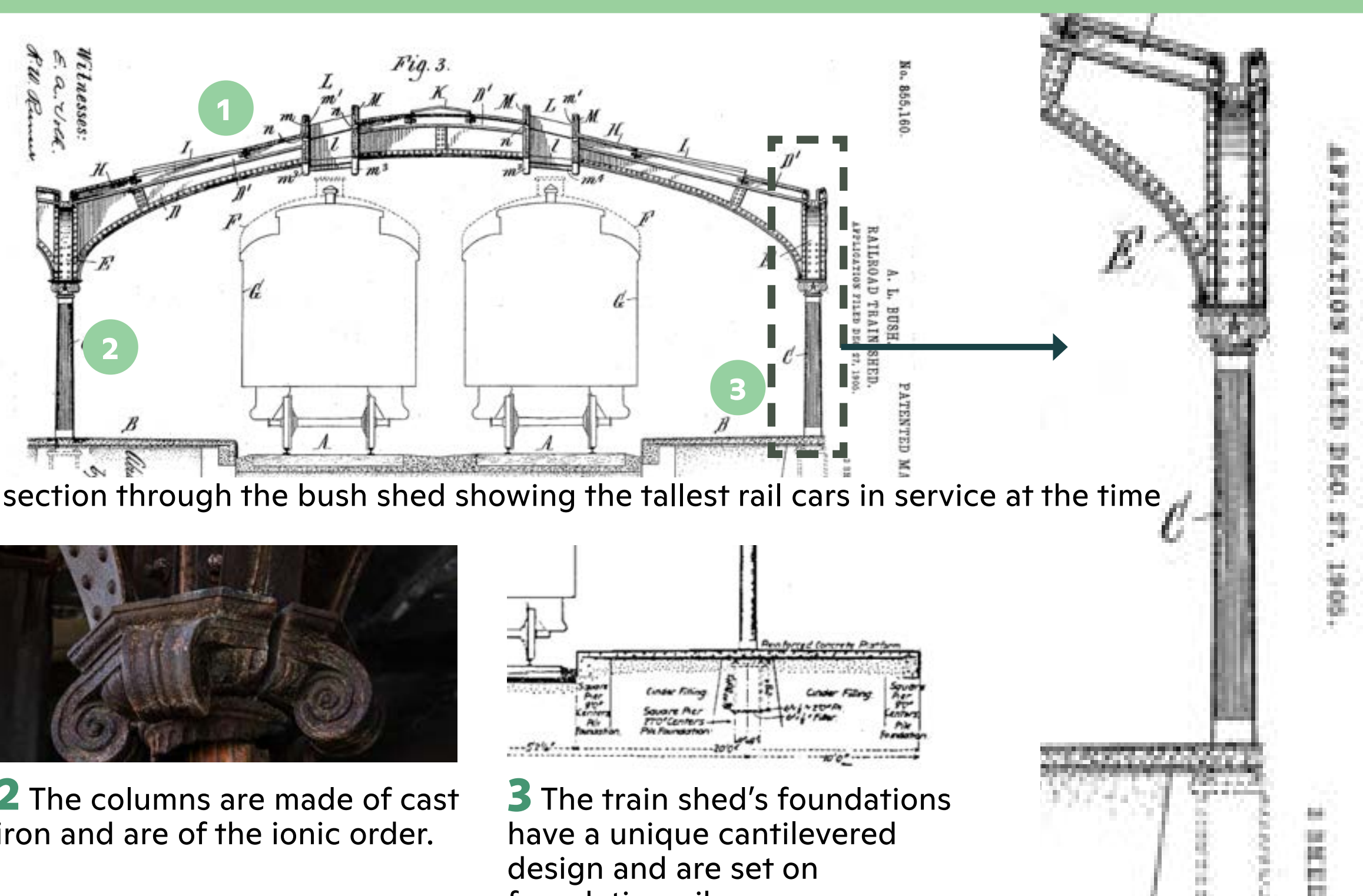
Performing observations and surveys on site in order to understand any structural deficiencies and overall condition of the structure. And, reviewing and identifying character defining historical elements for restoration, replication, and/or repair.



Scanning Making the use of Light Detection and Ranging (LiDAR) and 3D Photography to document and help analyze the existing structure in order to best bring it back to good condition.

How was the CRNNJ terminal shed constructed?

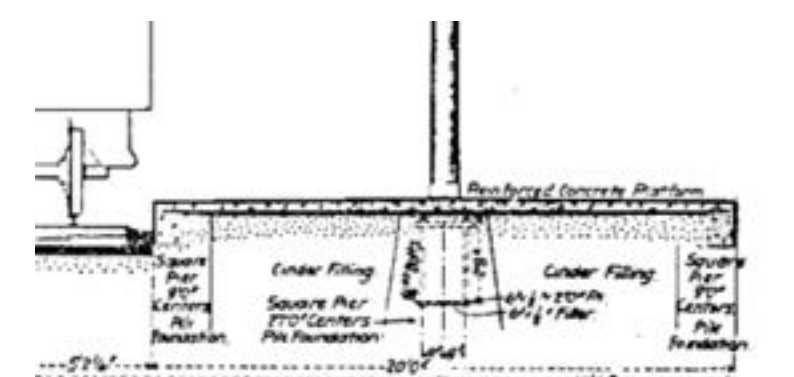
The CRRNJ Terminal Shed is a a Bush-style train shed named after the designer and is composed of a network of steel arches supporting low roofs.



1 The roof is composed of iron and reinforced concrete beams, with glass skylights over the passenger walkways.

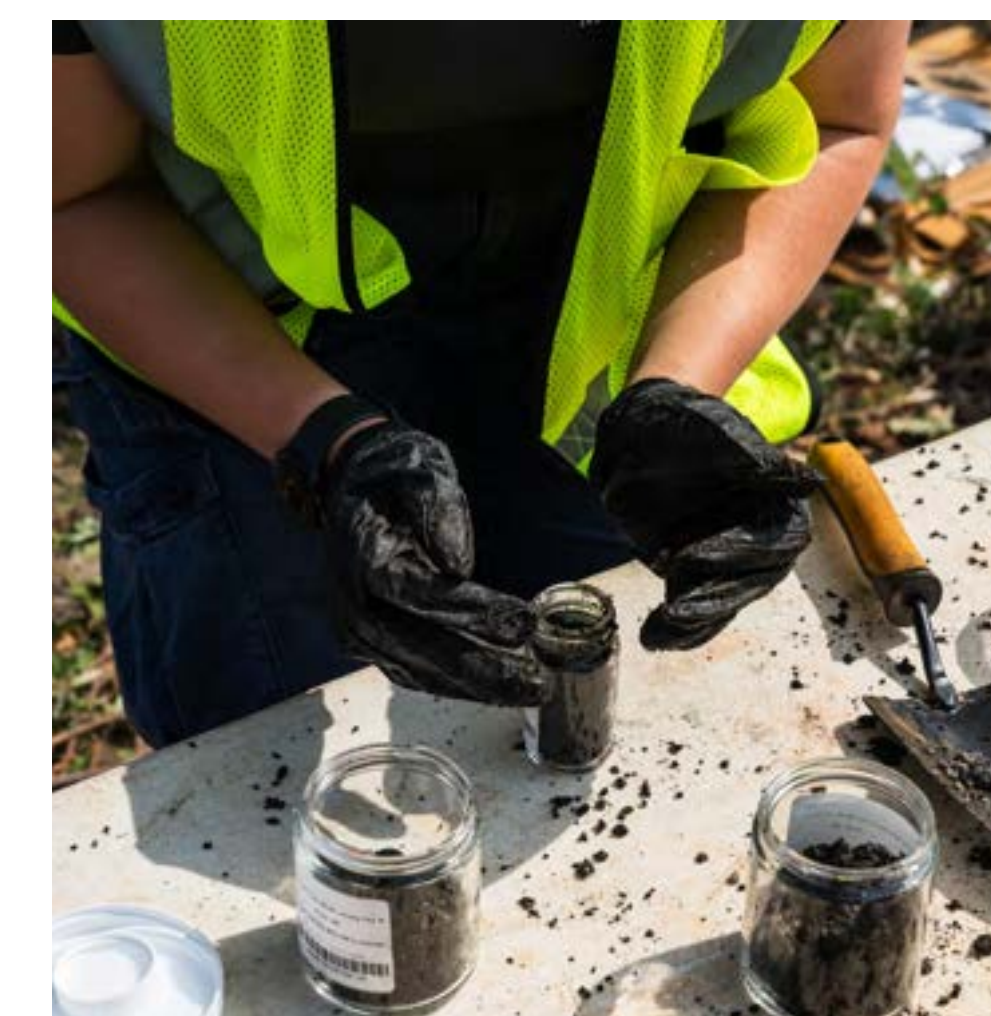


2 The columns are made of cast iron and are of the ionic order.

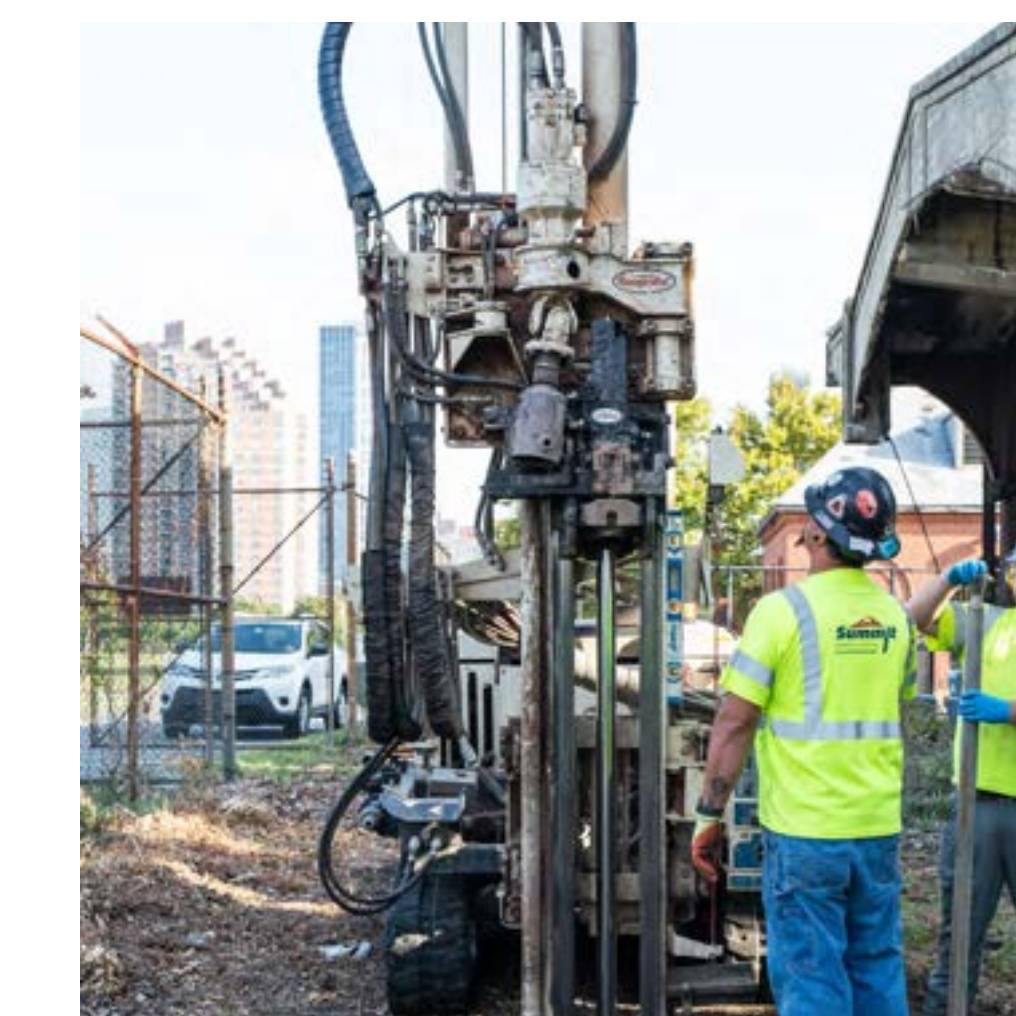


3 The train shed's foundations have a unique cantilevered design and are set on foundation piles.

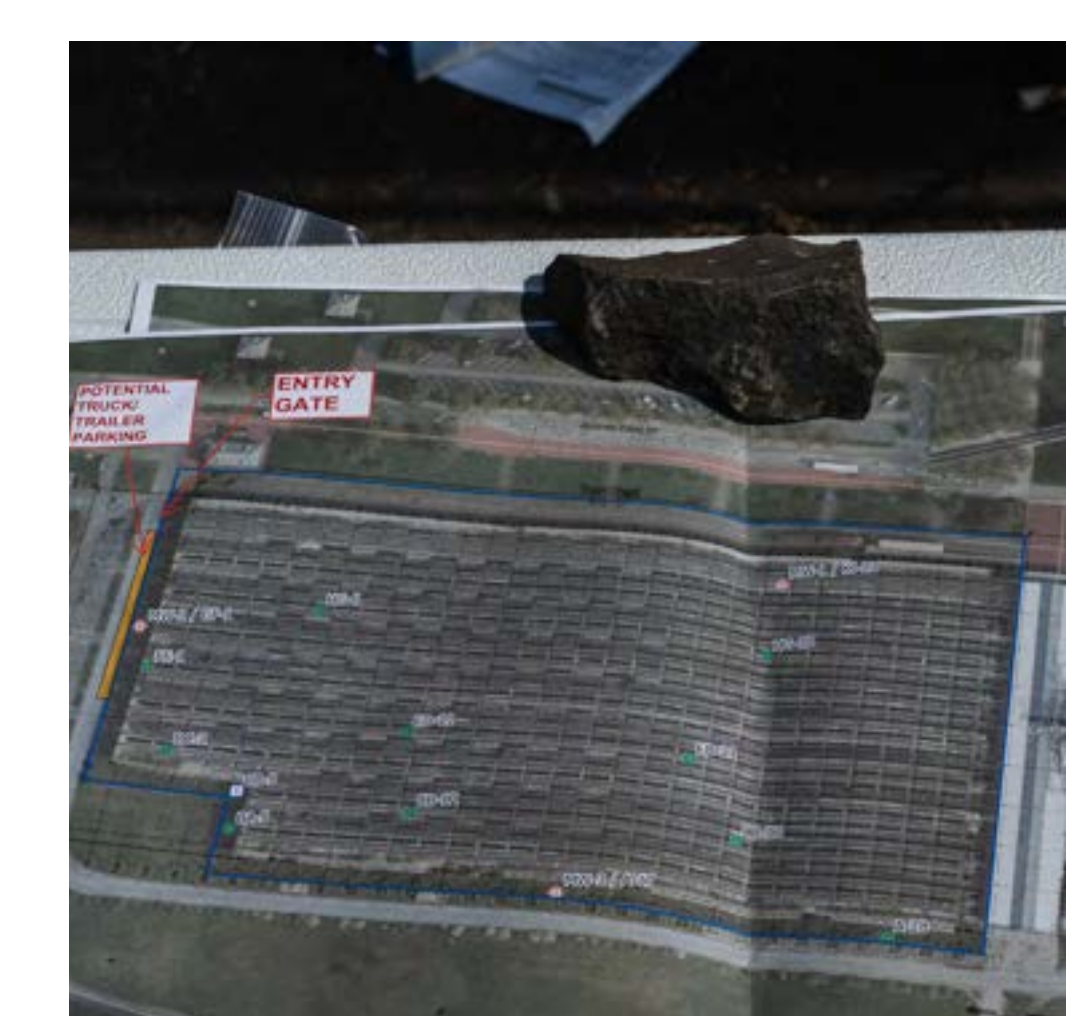
What other types of testing and borings are we conducting today?



Materials Testing Evaluating historic building materials is vital for preserving their integrity and ensuring that restoration efforts maintain their original character while meeting modern safety standards.



Geotechnical Site Investigation Conducting thorough subsurface site investigations is essential for understanding soil stability and potential impacts to the environment due to historic operations to ensure any redevelopment is conducted in a safe and sustainable manner that also adheres to current environmental regulations.



Groundwater Monitoring Monitoring groundwater conditions helps scientists, engineers, and planners assess potential groundwater impacts, manage drainage, and ensure sustainability of both structures and ecosystems through informed design.

Did You Know?

1 The train shed was built between 1912 - 1914 and was operational until 1967



2 Two-third of immigrants that traveled through Ellis Island took trains from this station



3 Hoboken's Lackawanna RR's station shed has the same structure as the CRRNJ shed



LSP-North The Train Shed

How will we preserve and highlight this historic shed?

The public expressed a prioritization of restoration and rehabilitation and to take action as an early action project.

Project Process

SITE INVESTIGATION

DESIGN

we are here

PERMITTING

CONSTRUCTION

COMPLETION

What is the historical preservation process and how does it affect the structure?

What are the Steps in the SHPO Process (the National Historic Preservation Act of 1966)?

- 1 Project Start
- 2 Identification of Historic Properties
- 3 Understanding Project Impacts
- 4 Minimizing Negative Effects
- 5 Final Approval

The project team informs SHPO about the proposed project. They also notify consulting parties, like local communities, historic groups, and property owners about the planned changes.

The team surveys the site to see if any historic buildings or areas will be affected. SHPO reviews this and decides if the property is eligible for the National Register of Historic Places.

SHPO evaluates how the project will impact the historic site. They determine if the changes will harm the property's historic features or not.

If the project negatively affects the historic property, SHPO works with the team to find ways to minimize damage. This could include modifying designs or incorporating historic preservation methods.

Once an agreement is reached, SHPO signs off on the project, and work can begin, as long as it follows the agreed guidelines to protect the historic site.

This process ensures that important historical sites are preserved, even when modern updates or renovations are necessary.



Grand Central Terminal was saved from demolition in the 1960s through preservation efforts led by SHPO, Jacqueline Kennedy Onassis, and the community, ensuring its historical integrity while allowing modern renovations.



A notable example of historic railroad infrastructure in New Jersey that was preserved and restored through historic preservation and the efforts of the State Historic Preservation Office (SHPO) is the Hoboken Terminal.

How are we thinking about sustainability and climate change at the Shed?



The sustainable design strategy for the terminal shed will prioritize reducing embodied carbon through material reuse, optimizing energy efficiency with renewable systems, and minimizing water consumption with conservation strategies.



An example of an adaptive reuse project by ARUP - the Coal Drop Yard, reimaged in London, UK.



In the future, New Jersey is expected to experience an increase in heat waves, which we have already seen in recent summers. By adapting the shed for future uses, it can be a haven for shade and will aim to have indoor-outdoor spaces so people can enjoy it in all seasons.



Storm events such as Superstorm Sandy have caused damage to the shed in the past. By designing the shed to be able to manage water strategically, we can help reduce the risk and extent of future damages and improve the resilience of this historic asset for generations to come.

What types of new programs, landscapes, and functions can we imagine in an historic structure?



In Kearny, NJ, WXY worked to envision a future for an historic shipyard, adding new programs and uses while preserving and celebrating the site's historic legacy.



In Nantes, France, Parc des Chantiers transformed a historic industrial park into a new landscape and flexible space for events.



At the Brooklyn Army Terminal, WXY worked on public realm, landscape, lighting, furniture to establish a spatial and visual identity that draws from the site's past history.



In Somerville, Massachusetts, the remnants of a former Ford Plant were transformed into a new outdoor event space and community park.

Did You Know?

4 The CRRNJ Terminal Building was one of several rail/marine terminals built along the waterfront to connect across the Hudson



5 The famous Blue Comet in service from 1929 to 1941 took passengers from this station to Atlantic City in around 3 hours



6 The current building replaced one designed by Peabody & Stearns of Boston in use from 1864-1889



Liberty State Park Revitalization Program: LSP-North

OPEN HOUSE: September 28th, 2024 - 1 Audrey Zapp Drive, Jersey City, NJ



NEW JERSEY
DEPARTMENT OF
ENVIRONMENTAL
PROTECTION

with

ARUP

WRT

WXY

Vision

Holmes & Narver

Studio City

MATRIX

NEW WORLD

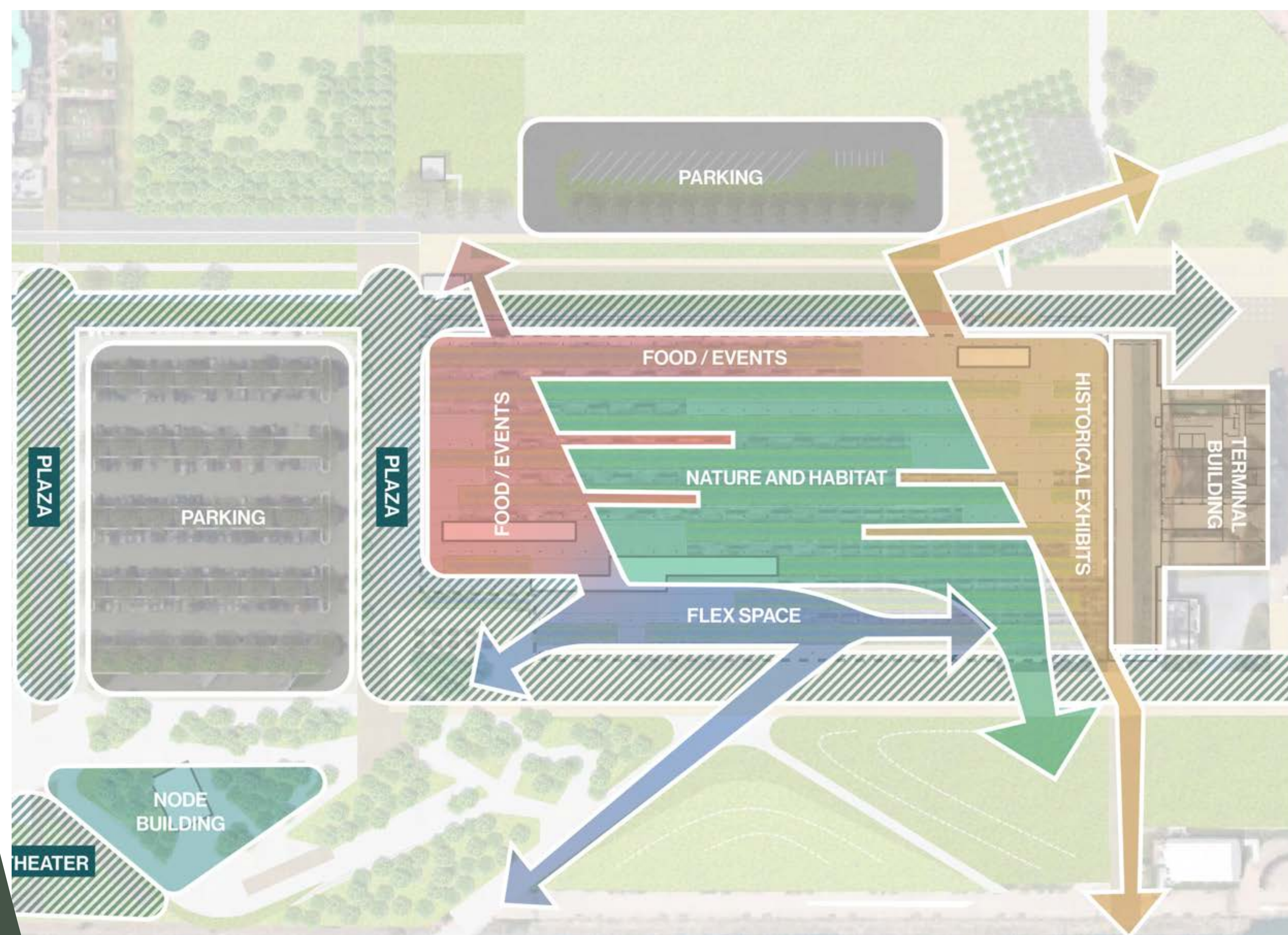
PACA

TRX

LSP-North The Train Shed

Here are some ideas for programs that could go under The Train Shed

Place a dot next to the program(s) you are interested in seeing at the Train Shed.



This diagram shows one potential concept for how programs are organized - what are your thoughts?

FOOD & EVENT



Outdoor Food Market



Dining Car



Winter Market/ Farmer's Market



Performance Space

NATURE AND HABITAT



Wetlands



Contemplative Garden



Native Landscape

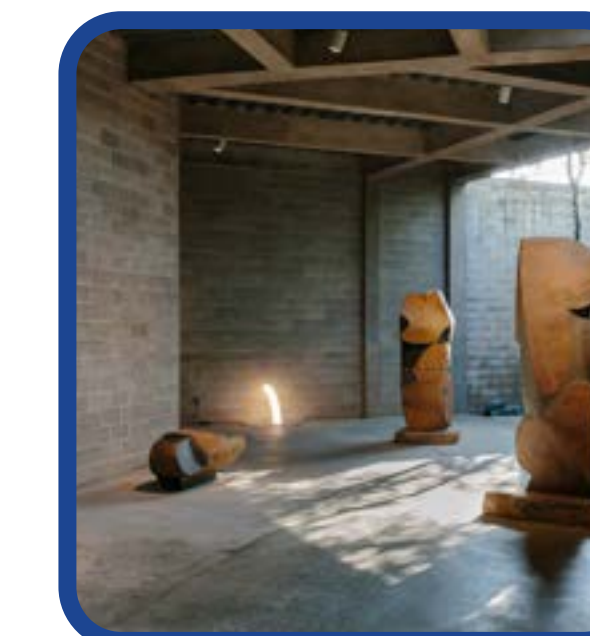


Multipurpose Gathering

FLEX SPACES



Multi-use Courtyard



Sculpture Park

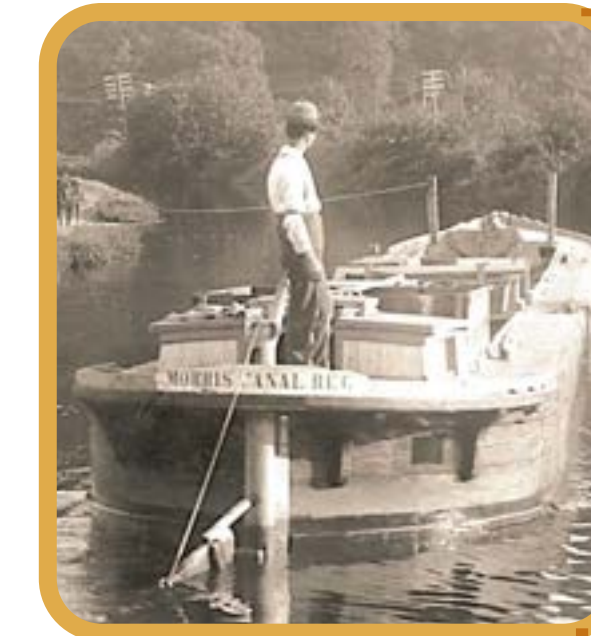


Yoga & Meditation Space



Outdoor Classroom/Workshop

HISTORICAL EXHIBITS



Morris Canal



CRRNJ



Lenape Heritage



Ellis Island & Immigration History

STATION 2: FOCUS AREA - LSP-NORTH

Station

#2

Liberty State Park - North (Detailed Design) + South (Holistic Long-Term Southern Area and Waterfront Master Plan)

Liberty State Park Revitalization Program: LSP-North

OPEN HOUSE: September 28th, 2024 - 1 Audrey Zapp Drive, Jersey City, NJ



NEW JERSEY
DEPARTMENT OF
ENVIRONMENTAL
PROTECTION

with:

ARUP

WRT

WXY

Vision

Holistic

Studios

MATRIX

NEW

WORLD

PACA

TRX