

# Hello + Welcome to the Open House!

## **Thanks for coming! Why we are here today?**

As the next touchpoint in LSP's community engagement process, today is focused on sharing progress. At each station, you will have the opportunity to share your feedback on updates related to:

- + LSP-North and its path toward implementation,
- + LSP-South and its progress toward a vision to guide phased improvements of LSP's southern and waterfront areas,
- + LSP-Interior and its work on cleanup, restoration and resilience.

## **What is the Liberty State Park (LSP) Revitalization Program?**

The Liberty State Park (LSP) Revitalization Program will bring more than one hundred acres of active recreational, arts, and cultural improvements to LSP's perimeter and create a central park at its heart with world-class natural landscapes that build resilience to flooding and climate change while providing passive recreation and educational opportunities for the public.

## **One Park Approach:**

## **How the LSP Revitalization Program creates a unified vision!**

To the right, read more about the 3 Phases depicted below:



# FAQs

## **The three-phased LSP Revitalization Program includes:**

### **LSP-Interior**

#### **Interior Area Restoration + Resilience**

Clean up legacy industrial pollution and complete ecological restoration with nature-based climate resilience features

Create a central park with 6 miles of trails, overlook views, and a variety of habitats through the cleanup and restoration of the long-fenced-off interior

### **LSP-North**

#### **Northern Arts, Culture + Active Recreation**

Create Northern Athletics Hub for public outdoor active recreation, including multi-purpose athletic fields and community center

Develop public arts and cultural spaces, including public outdoor amphitheater and revitalized Central Railroad terminal concourse into community gathering and market space

### **LSP-South**

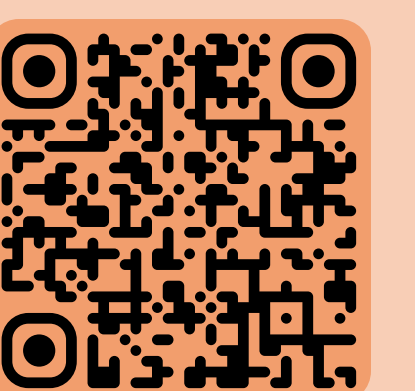
#### **Holistic Long-Term Master Plan**

Plan Southern Athletics Hub to potentially include public track and field center, ball fields, basketball courts, racket courts, and support facilities

Evaluate feasibility and plan community pool, aquatics center, community gardens, nature-based waterfront enhancements, and other public amenities

## **Learn More about the Revitalization!**

Join our email list, by scanning this QR code →  
or by visiting the Revitalize LSP website:  
<https://dep.nj.gov/revitalizelsp/>





# LSP Open House: Attendee Survey!

## QUESTIONS:

### What is your age range?

Place a dot in one response below:

#### The Greatest Generation

Born 1901-1927

#### The Silent Generation

Born 1928-1945

#### Baby Boomer Generation

Born 1946-1964

#### Generation X

Born 1965-1980

#### Millennial (Generation Y)

Born 1981-1996

#### Generation Z (Gen Z)

Born 1997-2010

#### Generation Alpha

Born 2010-Present

#### Prefer Not to Share

### How long have you been visiting Liberty State Park (LSP)?

Place a dot in one response below:

#### Today / This is my first time!

I have never been to LSP before

#### 0-5 years

I am a newer neighbor / park user

#### 6-10 years

I have been coming to LSP for almost a decade

#### 11-20 years

I have been coming to LSP for more than a decade

#### 21-30 years

I have been coming to LSP for a significant time

#### 31-40+ years

I have been coming to LSP since it opened in 1976

#### 50+ years

I came here before LSP opened in 1976

#### Prefer Not to Share

### Have you previously attended an open house/provided comment?

Place a dot in one response below:

#### No, this is my first time!

I have not provided comment previously

#### I have only engaged virtually

I have only provided feedback online (virtual surveys, listening in, etc.)

#### I have only engaged in-person

I have only attended previous in-person events (open houses, public meetings, etc.)

#### I have engaged both virtually and in-person

I have provided feedback online and attended previous events

### Are you affiliated with a group or organization that uses LSP regularly?

Please share on a post-it note here:

STATION 1: WELCOME + INTRODUCTIONS

Station

#1

## Liberty State Park Revitalization Program

OPEN HOUSE: September 28th, 2024 - 1 Audrey Zapp Drive, Jersey City, NJ

Liberty State Park - North (Detailed Design) +  
South (Holistic Long-Term Southern Area and  
Waterfront Master Plan)



NEW JERSEY  
DEPARTMENT OF  
ENVIRONMENTAL  
PROTECTION

with:

ARUP



WXY



Bechtel



MATRIX

NEW WORLD

PACA

HIK

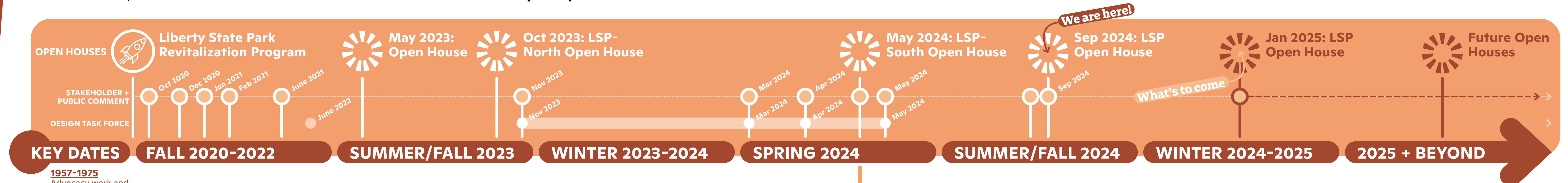


# LSP Engagement Summary: Timeline of Engagement

Open and continuous public engagement continues to be a touchstone of the LSP Revitalization Program.

## Timeline

To date, thousands of comments have been received to help shape the future of LSP!



## May 11th Open House (LSP-South)

Photos provided by: NJDEP, Jimmy Douglas

**The May 11th, 2024 Open House focused on Liberty State Park's Southern Area + Waterfront (LSP-South).** Attendees were asked to provide feedback to help shape the LSP-South Masterplan at four stations with interactive boards and activities.



## What We Heard

Key Themes + Takeaways

- At the May 11th Open House, attendees shared what excited them about the future of LSP-South. The findings from public comment explored the following themes and priorities:**
- + Maintaining a continuous waterfront zone for park visitors;
  - + An approach that allows for varied experiences in LSP-South, fixed uses, flexible uses and a chance for discovery;
  - + Creating connectivity with the LSP-Interior's continuous environmental core to expand access to nature;
  - + Balancing active and passive recreation goals (desire to consider passive experiences - walking, relaxing, reading, sitting on a bench, enjoying a view - with the same focus as active and athletics programs) and incorporating various types and styles of active recreation (from fixed athletic fields, to multipurpose flexible lawns, water recreation, courts, play);
  - + Creating diverse opportunities to play, as an important recreational amenity for park-goers (nature, inclusive, sensory, etc);
  - + A desire for considerable flexible open lawn space to be maintained at the waterfront for flexible/self-defined use, as well as hosting temporary and seasonal events to expand the capacity of LSP;
  - + Enhancing the use of the piers (Jetties) on the south waterfront;
  - + Maintaining spaces of 'oasis' within the park by considering noise buffers between programs and vehicular adjacencies;
  - + A desire to enhance safety, circulation, and entry access at the existing LSP entrances, and throughout LSP-South for all modes of transportation: pedestrian, bike, transit, vehicular;
  - + Recommendations for additional restroom facilities, water fountains (drinking), and concessions to support park users.

**How can we better engage you through the LSP Revitalization Program?**  
Please share your thoughts/ideas/strategies on a post-it here:

STATION 1: WELCOME + INTRODUCTIONS

Station

#1

**Liberty State Park Revitalization Program**  
**OPEN HOUSE:** September 28th, 2024 - 1 Audrey Zapp Drive, Jersey City, NJ

Liberty State Park - North (Detailed Design) + South (Holistic Long-Term Southern Area and Waterfront Master Plan)



NEW JERSEY  
DEPARTMENT OF  
ENVIRONMENTAL  
PROTECTION

with:

ARUP

WRT

WXY

Vision

Bechtel

Studio

MATRIX

NEW WORLD

PACA

HIK



# May 11th Open House Summary (LSP-South): What We Heard!

Thank you to everyone who attended our  
LSP-South Open House on May 11, 2024 and  
provide public comment in-person + virtually!

## Engagement Summary:

Key themes, takeaways, and findings from the LSP-South Open House: *For more information on Station 2\* - LSP-South Programming and Athletics Hub - visit the LSP-South Station today.*

May 11<sup>th</sup>  
Stations:

## 1: Welcome

Station 1 shared historical information, maps of existing conditions analysis, and asked questions about how/when people use LSP's Southern Area and Waterfront today.

What We Asked:

### When do you typically visit LSP's Southern/Waterfront areas?

What we heard:

**Weekdays**  
(evenly throughout the day), and

**Weekend mornings and afternoons**  
are LSP-South's most frequently visited times.



### Why do you come to LSP-South areas today?

What we heard:

+ **Walking / Daily Walk: 35%**

Daily walk, sometimes visit nature center  
Walks on the Waterfront Walkway  
Enjoying peace and beauty, enjoying views  
Spending time outside  
Running, Exercise, Run/Walk my dog

+ **Bike Riding/Cycling: 20%**

Biking in the park with wonderful river views

+ **Birdwatching: 12%**

+ **Picnic/Social Gatherings: 7%**

+ **Nature Observation: 7%**

Get "out" of the city, explore wildlife

+ **Relaxing: 4%**

Fresh air, peace, meditation, space

+ **Playgrounds: 3%**

+ **Photography: 3%**

+ **Enjoying Flowers: 3%**

+ **Green Space: 3%**

+ **Water Enjoyment: 3%**

+ **Others, including:**

Sitting on a bench

People-watching, sightseeing

Reading (need more shade trees)

Connections to Caven Point

2\*

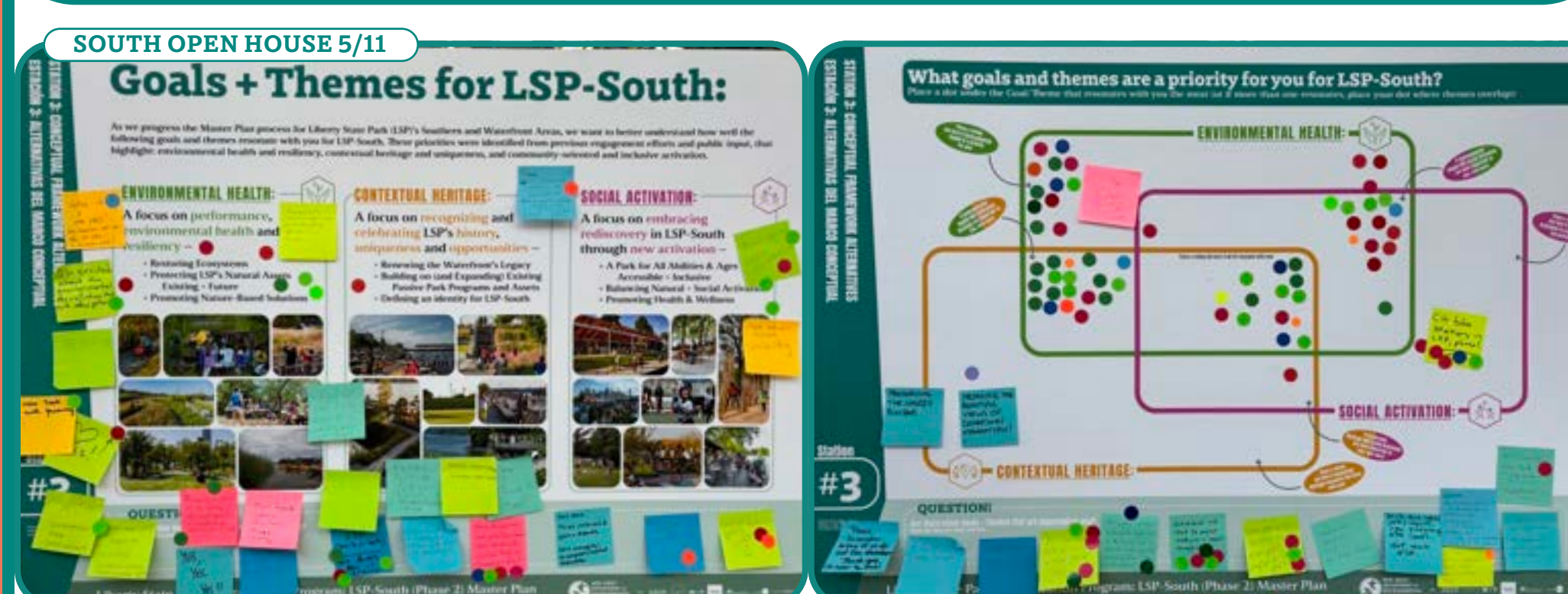
Station 2:  
Program  
summary  
at LSP-  
South  
boards.

## 3: Frameworks

Station 3 asked attendees to prioritize that goals and themes for LSP-South's masterplan that resonated with them the most: Environmental Health, Social Activation, Contextual Heritage.

What We Asked:

### What goals and themes are a priority for you for LSP-South?



+ **Other Goals, Themes + Priorities shared:**

Connectivity: Circulation, Safety, Park Access + Parking

Accessibility: How LSP can be a more accessible and inclusive destination

Supportive Amenities: Increasing access to restrooms, water fountains (drinking), and shade

**A Kid's Activity engaged younger attendees for their feedback:**

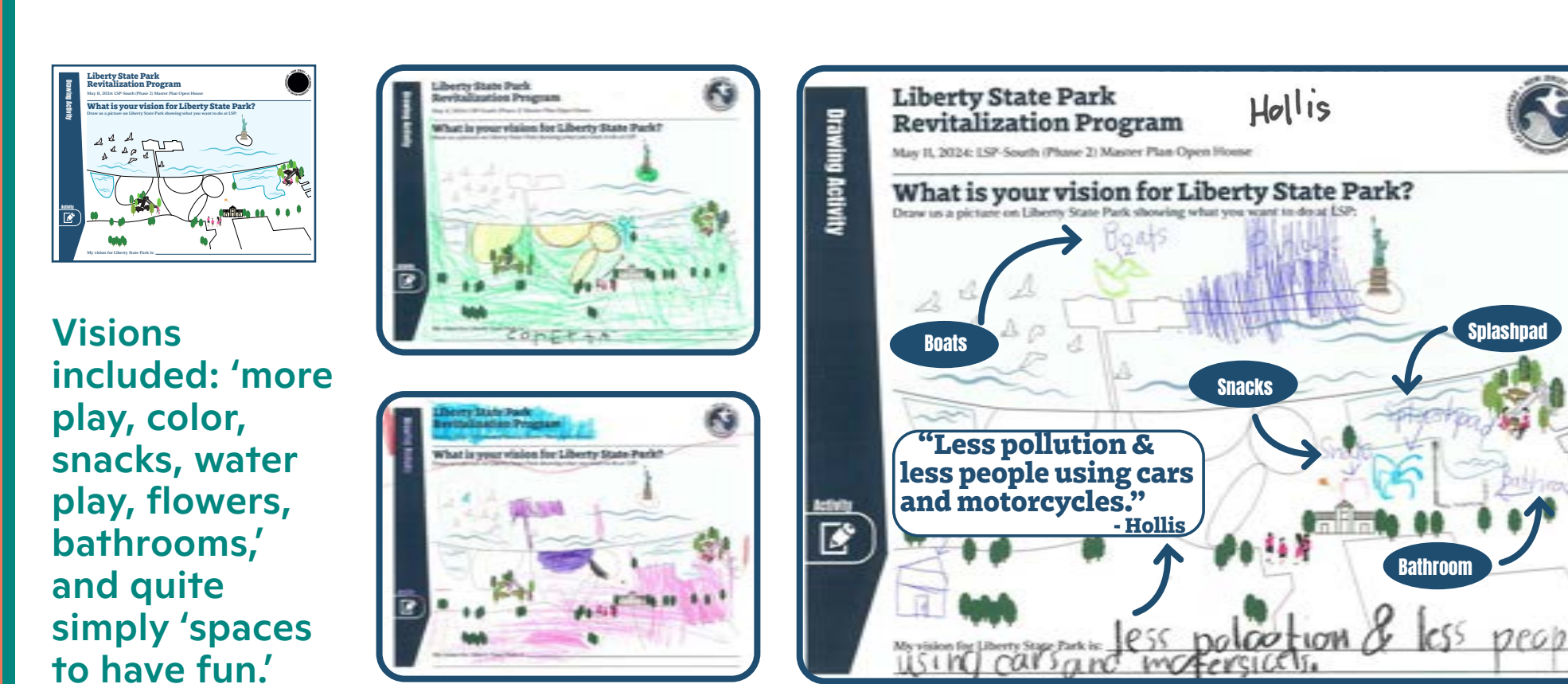


Table Map

## 4: Visioning

Station 4 invited attendees to dream about the future of LSP as a more accessible place, by sharing what their 'ideal day' might look like, and the role that LSP-South plays in their community.

What We Asked:

### My typical day at LSP is defined by/focused on:

What we heard:

Open House Attendees were asked to think about the types of park uses that most aligned with their typical day at LSP (how they use Liberty State Park's Southern Areas).

26% **Daily (Local) Visitor / Family Uses**

17% **Natural / Educational Programming**

9% **LSP Employee / Park Stewardship**

3% **Athletic Uses / Active Recreation**

26% **Passive Uses / Leisure Programming**

11% **Play + Celebratory Programming**

5% **First-Time Visitor + Tourist Uses**

3% **Park Event + Seasonal Programming**



### What role does LSP-South play in your community?

What we heard:

+ **The most-used flags were:**

"What if LSP had..." (62 mapped)

"I have a Memory Here!" (40 mapped)

+ **The top 5 key themes / takeaways:**

"What if LSP had..."

More amenities for Passive Uses (at the waterfront)

Capacity to support more Athletic Programs (fields)

"My Waterfront Spot!" / "I have a Memory Here!"

Wildlife + Nature Educational Observation

"I have a Memory Here!" / "This is a Hidden Gem."

Caven Point

Camp Liberty



## Key Themes + Takeaways:

### Station 1:

- + Desire to achieve a balance of places to recreate and relax, walk and bike - with a focus on safety for all park users;
- + Maintain access to existing waterfront and enhance places that currently offer waterfront enjoyment, picnic, and play;
- + Introduce recreation and athletic programming in areas that complement other site uses and amenities, support community needs;
- + Respect areas like Caven Point and Richard J Sullivan Natural Area, and add more trees to passive spaces to achieve more shade (especially for walkways and benches).

### Station 3:

- + The theme of Environmental Health was a top priority amongst those surveyed - with an emphasis on greenery, resilience, and cooling / shade;
- + Support was shown for strategies to integrate all 3 goals, maintaining the flexibility of Park spaces to provide inclusive activation/recreation and celebrate the waterfront;
- + The goals and themes invited meaningful feedback and conversations around the role of programming within LSP-South, and aspirations to: enhance the character of the LSP's Southern and Waterfront Areas, maintain the character of unique existing assets (waterfront, great lawns, viewsheds), while also introducing new programs/amenities.

### Station 4:

- + Goal to strike a balance between introducing new programs and athletics to activate the park for new user groups, and maintaining the quality of waterfront spaces that currently define the legacy of LSP's southern areas and waterfront;
- + Maintaining a continuous waterfront zone for park users, activated in new ways;
- + Supporting community needs around programs and uses (active recreation);
- + Importance of play as an amenity for park-goers (different styles and types of play);
- + Enhancing the use of the piers (Jetties) on the South Waterfront;
- + An approach that allows various experiences throughout LSP, a chance to discover!

Liberty State Park Revitalization Program

OPEN HOUSE: September 28th, 2024 - 1 Audrey Zapp Drive, Jersey City, NJ

Liberty State Park - North (Detailed Design) +  
South (Holistic Long-Term Southern Area and  
Waterfront Master Plan)



NEW JERSEY  
DEPARTMENT OF  
ENVIRONMENTAL  
PROTECTION

with: ARUP

WRT

WXY

Vision

Redesign

studio

MATRIX

NEW WORLD

PACA

HIK



# Sitewide Strategies: Visitor Experience

Our Liberty State Park experiences are tied to how we move through the park, and the destinations and activities we encounter along the way. The Zones below explore the potential of the varied spaces across LSP to support new experiences, while maintaining existing key features and areas. Share your feedback and priorities here, and at the other Stations!



STATION 1: WELCOME + INTRODUCTIONS

Station  
**#1**

**Are there existing areas across LSP that you feel need support/attention currently?**  
Please share your thoughts on a post-it note here:

## Program Opportunity Zones

Question: Which zone of Liberty State Park do you most want to...

Place one (1) dot in each column next your single top priority zone in response to each question. (Please only vote 1 choice for each of the 3 prompts):

**MAINTAIN:**  
keep mostly as is (a lighter touch) with some improvements?

**ENHANCE:**  
introduce new amenities to support park users (passive)?

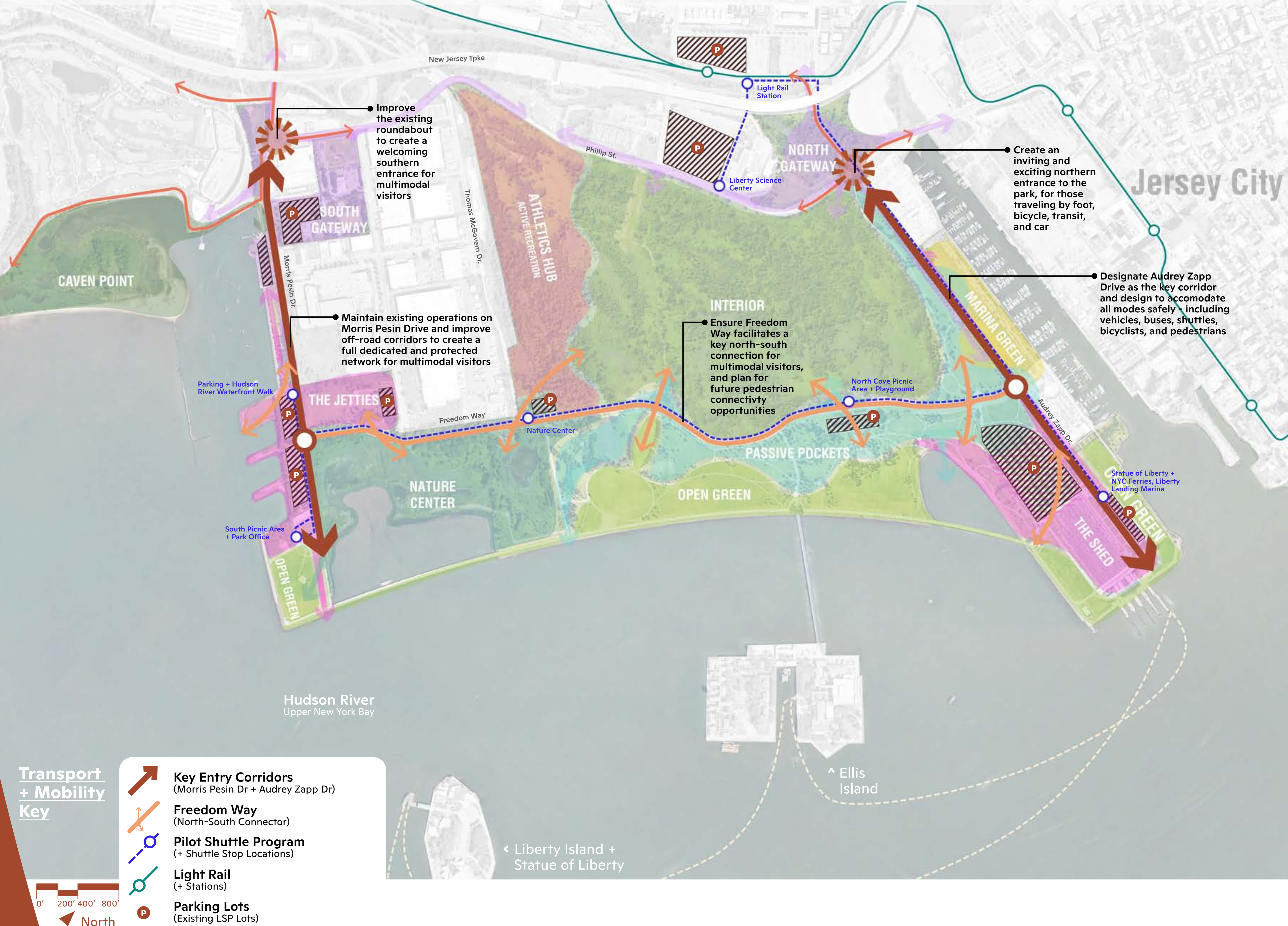
**TRANSFORM:**  
diversify programs (active/social) as future destinations?

a Caven Point			
b Gateway (South - Morris Pesin Dr)			
c Gateway (North - Audrey Zapp Dr)			
d The Jetties (LSP-South Social Hub)			
e Athletics Hub (LSP-South Active Recreation, currently inaccessible)			
f Interior Restoration (LSP-Interior, in-progress, currently inaccessible)			
g Marina Green			
h Nature Center (including the Richard J. Sullivan Natural Area)			
i Passive Pockets			
j The Shed (LSP-North Social Hub)			
k Open Green (LSP Waterfront Great Lawns: South Lawn, Green Ring, Crescent Field, Green Park, North Field)			



# Sitewide Strategies: Mobility Design

Mobility is a key element in realizing a more connected and accessible Liberty State Park. Building on what we have heard to date, through public comment and input, the following three (3) topics had the most impact in developing key mobility design objectives: ① Connectivity to, from, and within Liberty State Park; ② Safety and Accessibility for All Visitors and Park Users; and ③ Sustainability and Resiliency of Mobility Networks.



Transport  
+ Mobility  
Key

- Key Entry Corridors**  
(Morris Pesin Dr + Audrey Zapp Dr)
- Freedom Way**  
(North-South Connector)
- Pilot Shuttle Program**  
(+ Shuttle Stop Locations)
- Light Rail**  
(+ Stations)
- Parking Lots**  
(Existing LSP Lots)

0' 200' 400' 800'  
North

**DID YOU KNOW? NJDEP launched a Pilot Shuttle Program this Summer!**

**LSP Parkwide Pilot Shuttle Program: Survey Key Findings**

**Top 5 Destinations for Surveyed Riders**

- + Hudson River Waterfront Walk
- + Nature Center
- + Central Railroad of New Jersey (The Shed)
- + Green Park / North Picnic Area + Playground
- + Empty Sky 9/11 Memorial

**54%**

of riders surveyed arrived by means other than car

**84%**

of riders surveyed would take the shuttle on their next visit

**43%**

of riders surveyed visited the park just for fun!



Didn't get a chance to participate in the survey? Provide your feedback on the Pilot Shuttle Program today through October 15th by visiting:



## Mobility Design Objectives

Transportation and mobility key design objectives envision a more **connected, safe, accessible and resilient** LSP.

**Question: Which sitewide mobility objective is most important to you?**

Place one (1) dot next to the strategy you consider to be a top priority for LSP in the right column below:

**Vote here:**

### CONNECTIVITY

#### OBJECTIVES:

- + Improve connectivity to and from the Park for all modes, with particular focus on creating a welcoming and inviting environment for all Park users.
- + Collaborate with the local community, stakeholders and transportation entities to understand key connectivity constraints, and opportunities.

### SAFETY + ACCESSIBILITY

#### OBJECTIVES:

- + Create an integrated and accessible multimodal internal network within the Park (a wholistic approach for the LSP Revitalization Program).
- + Leverage existing community anchors to develop solutions that address the multimodal needs of all users and visitors, with a focus on enhancing safety and accessibility.

### SUSTAINABILITY + RESILIENCY

#### OBJECTIVES:

- + Minimize vehicular congestion entering and exiting the Park and understand existing and future parking demands, as well as inventory within the Park.
- + Develop a range of solutions that address both short-term needs, and long-term goals.

### Other priorities?

**Are there other mobility objectives we should consider?**

Please share on a post-it note here:

STATION 1: WELCOME + INTRODUCTIONS

Station

#1

Liberty State Park - North (Detailed Design) + South (Holistic Long-Term Southern Area and Waterfront Master Plan)

**Liberty State Park Revitalization Program**

**OPEN HOUSE:** September 28th, 2024 - 1 Audrey Zapp Drive, Jersey City, NJ



NEW JERSEY  
DEPARTMENT OF  
ENVIRONMENTAL  
PROTECTION

with: ARUP



WXY



Barclays



MATRIX

NEW WORLD

PACA

HIYA



# Sitewide Strategies: Resilience Framework

The Resilience Framework provides a natural infrastructure for Liberty State Park that layers nature-based solutions cohesively with recreation and programming. Existing natural areas such as Caven Point, the Richard J Sullivan Area, and the Interior Restoration are key to the site's overall resilience. With this approach, ecosystem services can be expanded to enhance existing natural assets while increasing access and improving visitor experiences.



**-What resilience programming do you currently enjoy at LSP?**  
**Are there areas of LSP you want to see more resilience programming?**

Please share your thoughts a post-it note here or on the map above:

**Liberty State Park Revitalization Program**  
**OPEN HOUSE:** September 28th, 2024 - 1 Audrey Zapp Drive, Jersey City, NJ

## Sitewide Resilience Strategies

The Sitewide Resilience Strategies may be applied broadly throughout Liberty State Park to enhance ecosystem services and site resilience in the face of climate change. These actions will increase stormwater management and flood protection, mitigate urban heat island through shading and cooling, reduce maintenance needs, and diversify user experience while connecting guests to the site's rich natural history.

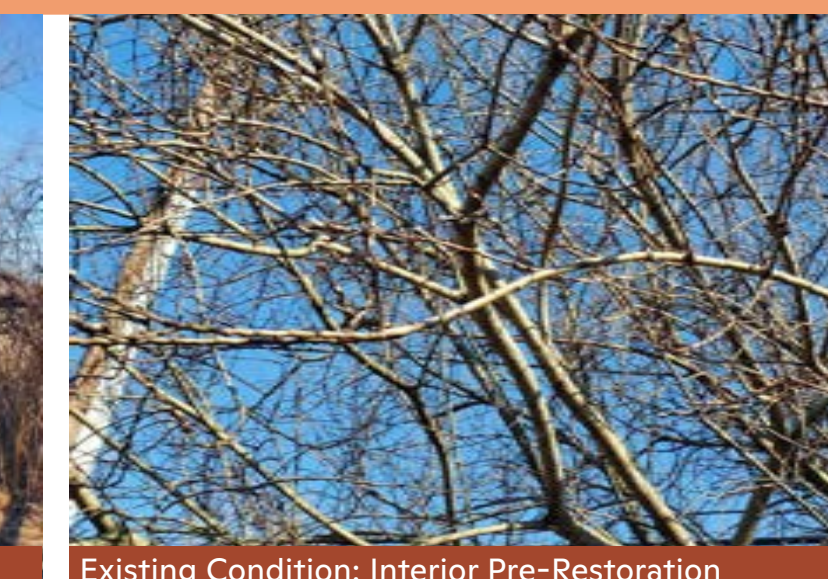
**Question: Which sitewide resilience strategy resonates with you the most?**  
Place one (1) dot next to the strategy you consider to be a top priority for LSP!

**Vote here:**

### Connection to Interior Restoration



Existing Condition: Interior Pre-Restoration



Existing Condition: Interior Pre-Restoration

### Conversion of Mown Lawn to Native Habitat



Existing Condition: Open Lawn at LSP

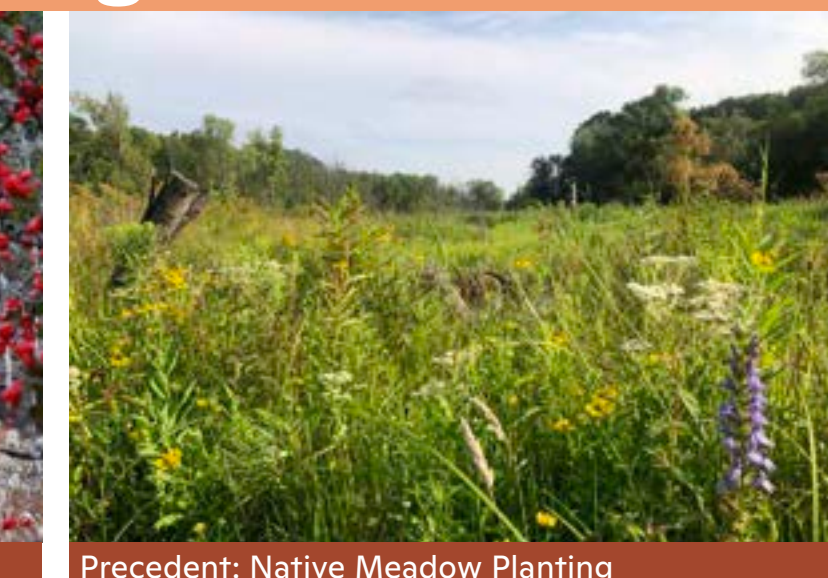


Precedent: Restored Meadow (North Delaware Lardner's Point Park Living Shoreline + Greenway)

### Native Species Planting



Precedent: Native Scrub Planting (Credit: NB Hunter)



Precedent: Native Meadow Planting

### Green Stormwater Infrastructure



Precedent: Emergent Treatment Wetland (West Chester University)



Precedent: Natural Stormwater Conveyance (Tower Grove Park, St. Louis, MO)

### Invasive Species Management



Existing Condition: *Phragmites australis* surrounding stormwater pond

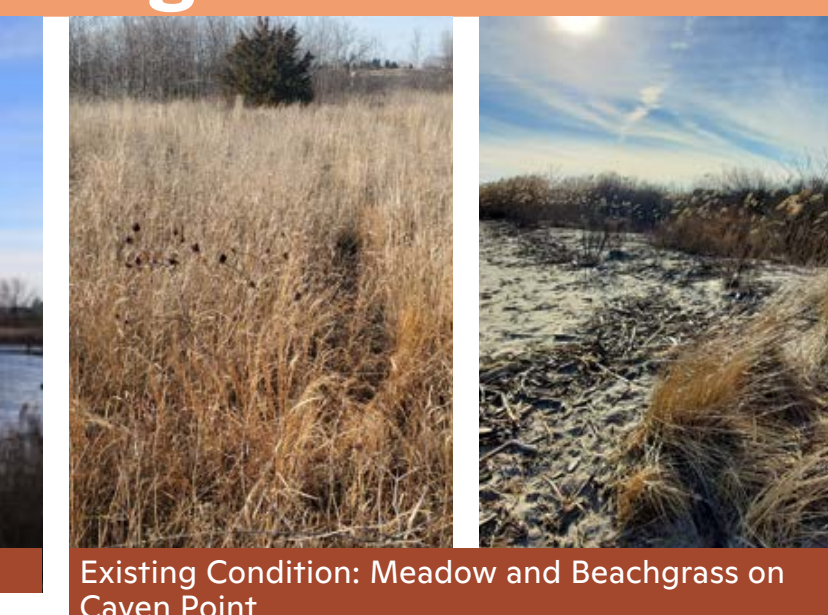


Existing Condition: *Phragmites australis* at the Richard J. Sullivan Natural Area

### Conservation of Existing Areas



Existing Condition: Mudflat at Caven Point



Existing Condition: Meadow and Beachgrass on Caven Point

STATION 1: WELCOME + INTRODUCTIONS

Station

#1

Liberty State Park - North (Detailed Design) + South (Holistic Long-Term Southern Area and Waterfront Master Plan)



NEW JERSEY  
DEPARTMENT OF  
ENVIRONMENTAL  
PROTECTION

with:

ARUP

WRT

WXY

Vision

Barclays

studio

MATRIX

NEWORLD

PACA

HIKA



# Sitewide Strategies: Sustainability

## Sustainability at Liberty State Park

### Energy:

The park will minimize its carbon footprint by incorporating renewable energy sources, such as solar panels and energy-efficient technologies, to power park facilities and buildings.

### Water:

Our design will prioritize efficient water fixtures and water reuse methods. Water use reduction strategies will reduce strain on local water supplies.

### Materials & Waste:

The park design will reduce, reuse, and recycle materials. We will minimize waste during both construction and operation. We will select materials that can be recycled or repurposed at end of life, installing recycling and composting stations for park visitors, and exploring opportunities to upcycle materials from local sources.

### Thermal Comfort:

We will create shaded spaces using trees and reflective surfaces to mitigate heat. Green space will help reduce the urban heat island effect and make the park comfortable during all seasons.

This sustainability strategy ensures that the park provides a beautiful space for recreation, but also serves as a model of sustainable design. We invite you to share your thoughts and ideas to help us refine these goals!

## Sustainability Opportunities

Sustainability is woven into the fabric of LSP. The categories of energy, water, waste & materials, and thermal comfort provide a framework to identify additional strategies and features that can be incorporated into the park design.

**Question: Which sustainability strategies would you be most excited to see at LSP?**

Place one (1) dot below the strategies you consider to be a top priority for LSP!

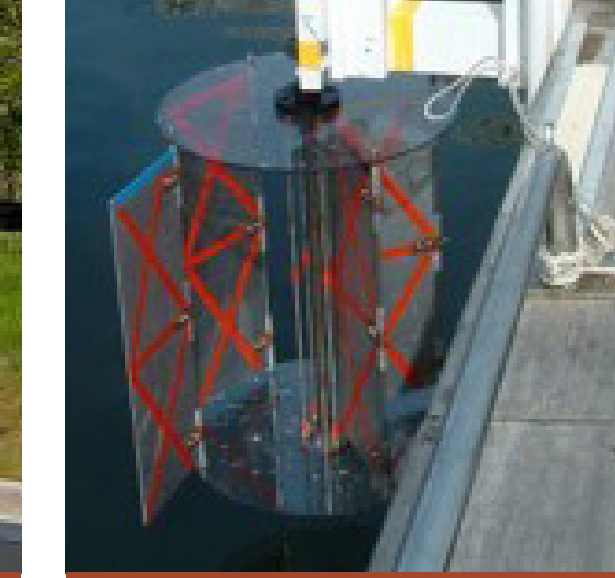
### Energy



Solar Canopies



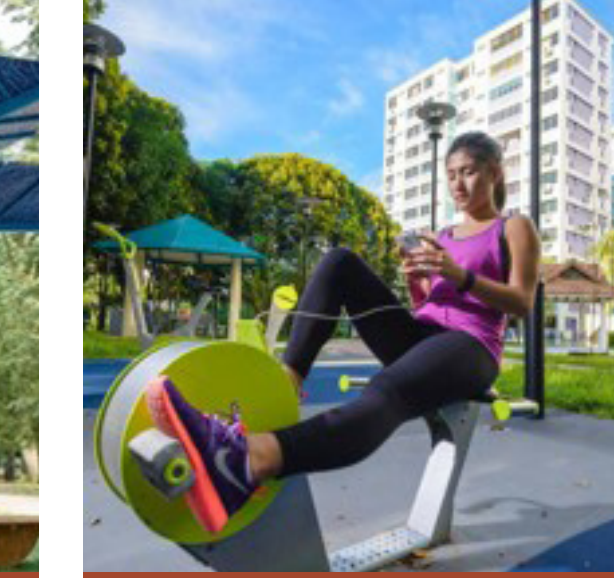
EV Charging Stations



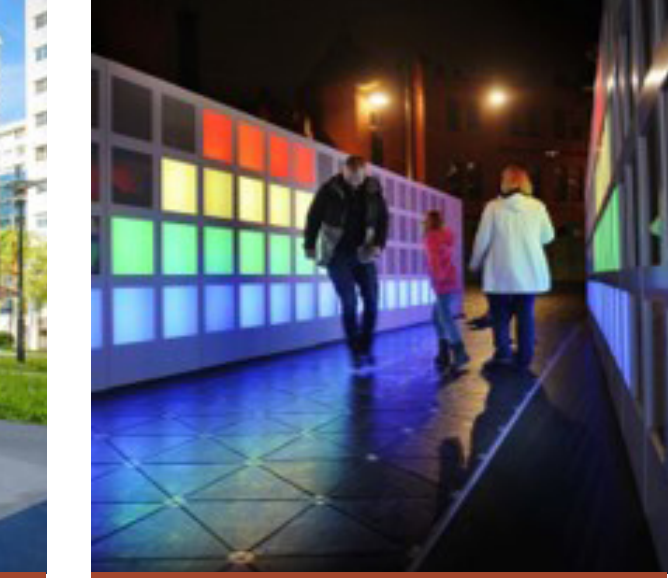
Tidal Turbines



Solar Charging Stations



Charging Pedal Stations



Kinetic Paving

Vote here:

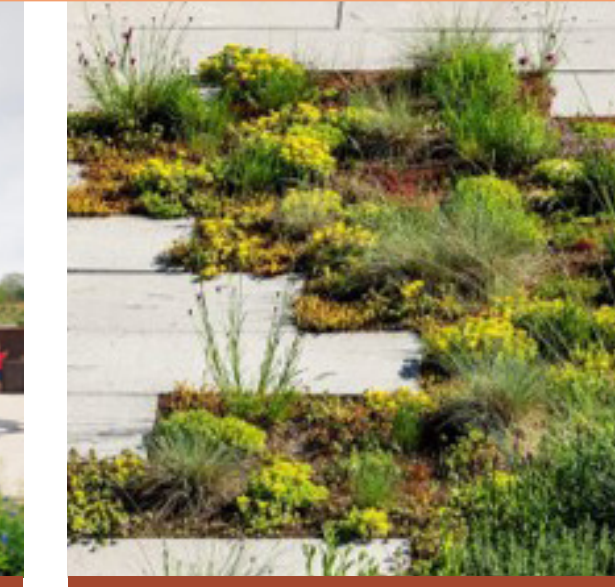
### Water



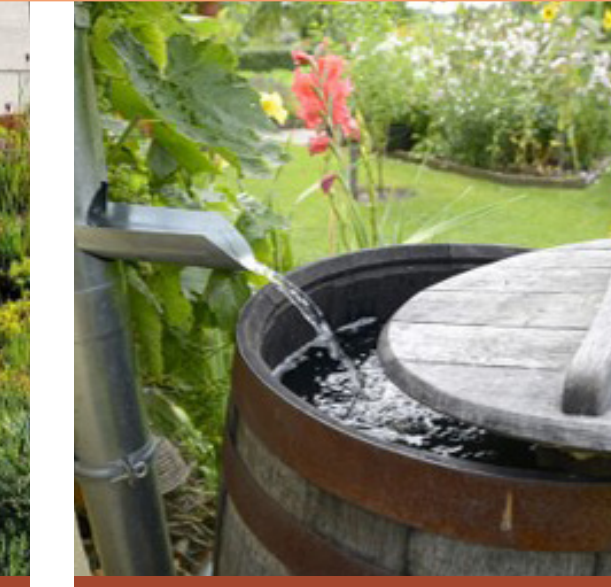
Composting Toilet



Rainwater Capture



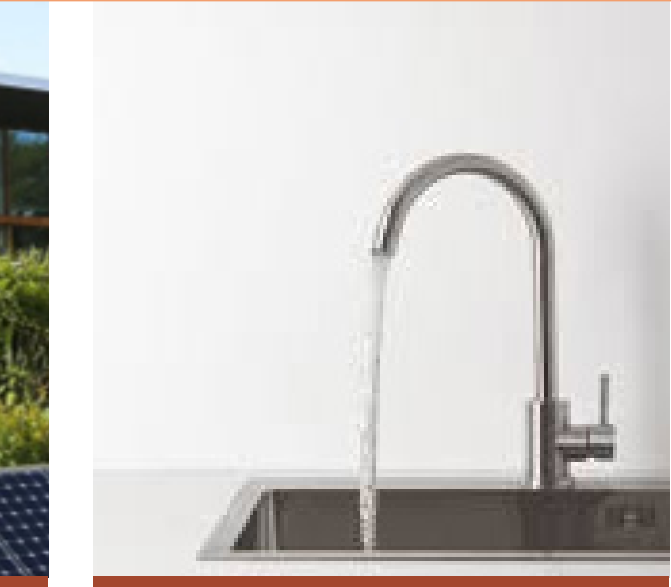
Xeriscaping



Rainwater Reuse



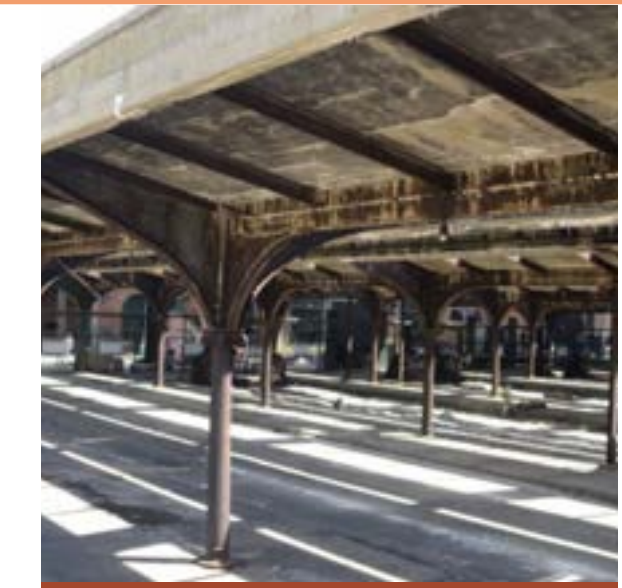
Wastewater Reuse



Efficient Fixtures

Vote here:

### Materials & Waste



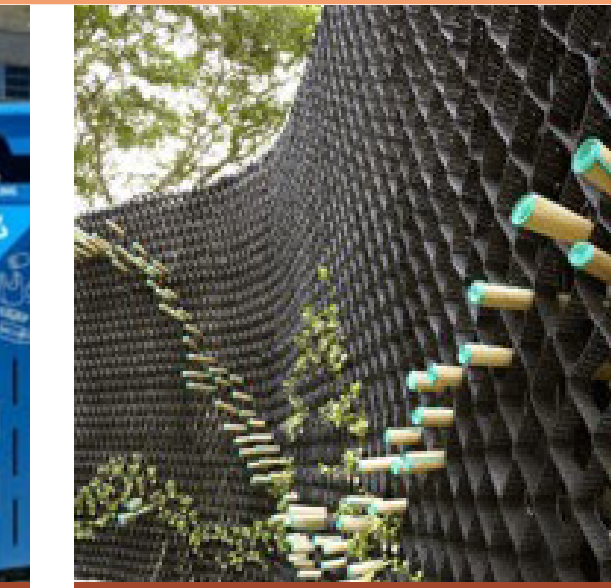
Reuse of Park Structures



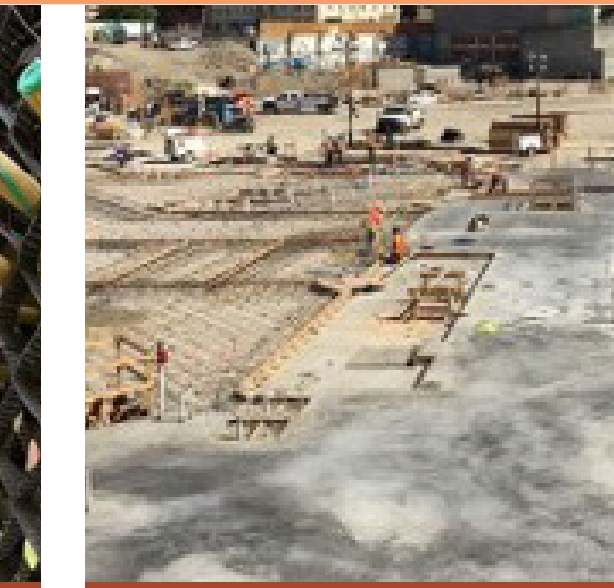
Timber Structures



Waste Separation



Reusable Structure



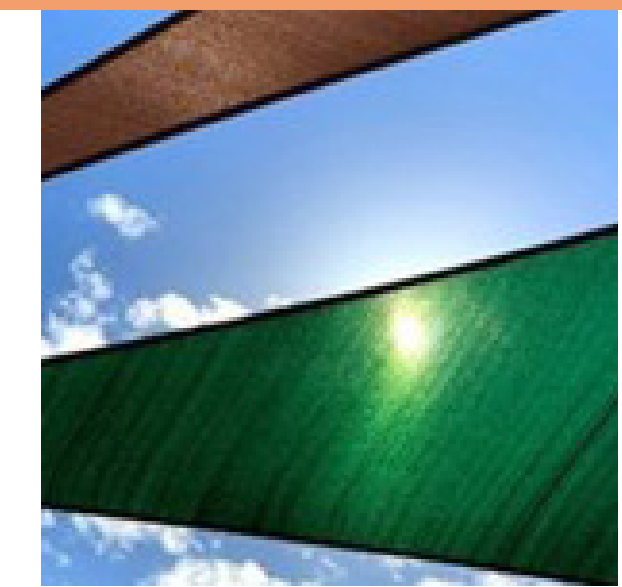
Construction Diversion



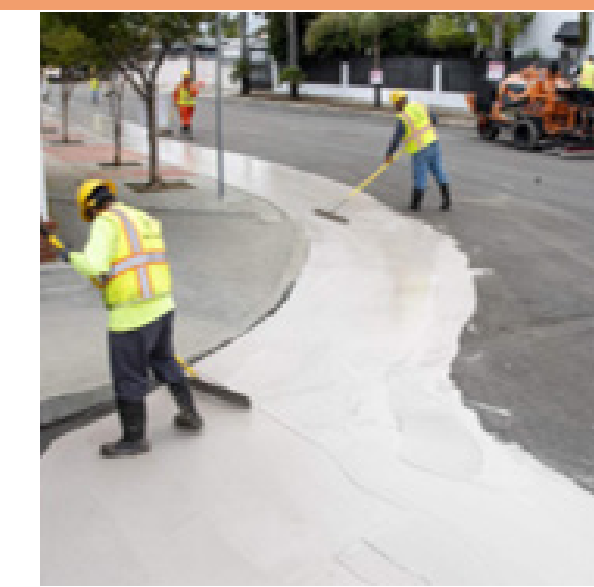
Site Material Reuse

Vote here:

### Thermal Comfort



Shading



Cool Surfaces



Tree Shading



Water Features



Splash Park



Shade Structures

Vote here:

### Other priorities?

Are there other sustainability strategies we should consider? Please share on a post-it note here:

**-Where did you go on the hottest day this summer in Liberty State Park?**

Please share on a post-it here:

Station

#1

Liberty State Park Revitalization Program

OPEN HOUSE: September 28th, 2024 - 1 Audrey Zapp Drive, Jersey City, NJ

Liberty State Park - North (Detailed Design) + South (Holistic Long-Term Southern Area and Waterfront Master Plan)



NEW JERSEY  
DEPARTMENT OF  
ENVIRONMENTAL  
PROTECTION

with:

ARUP

WRT

WXY

Vision

ReidStaples

StudioFolio

MATRIX

NEWORLD

PACA

HIKA



# We want to hear from YOU: Kid's Activity!

**What should LSP's PLAY spaces include?**

*Open to all ages (including adults)!*



## Question:

**How do you like to PLAY?**

**We are here today to think  
and dream about the future of  
Liberty State Park (LSP), and**

**WE NEED YOUR HELP!**

**How can you help?**

**We want to know your favorite ways to  
PLAY, and what you want to see at LSP!**

- + SHARE an image or idea (from the collection of play photos provided) to help us understand what you think PLAY should (or should not) be at LSP!
- + DRAW us a picture of how you want to play at LSP in the future!

**What to think about:**

- What adventures could you have at LSP?
- What types of spaces make you happy?
- When you play, do you like to:
  - Go fast? Explore? Spin? Swing? Build?
  - Be with your friends? Be up high? Learn?

**+ How to participate:**



**Think about how you want to play at LSP:**

Find a photo you like, write down your ideas, or draw us a picture of how you want to PLAY at LSP in the future!

## Community Collage Activity:

**PLAY at LSP is...**

**PLAY at LSP is not...**

**Share:** place an image, or a post-it note below, and share what you think PLAY is (or is not) at LSP!

Station

#1

**Liberty State Park Revitalization Program**

**OPEN HOUSE:** September 28th, 2024 - 1 Audrey Zapp Drive, Jersey City, NJ