

# LSP Open House: Welcome to the Open House!

## Thanks for coming! Why we are here today?

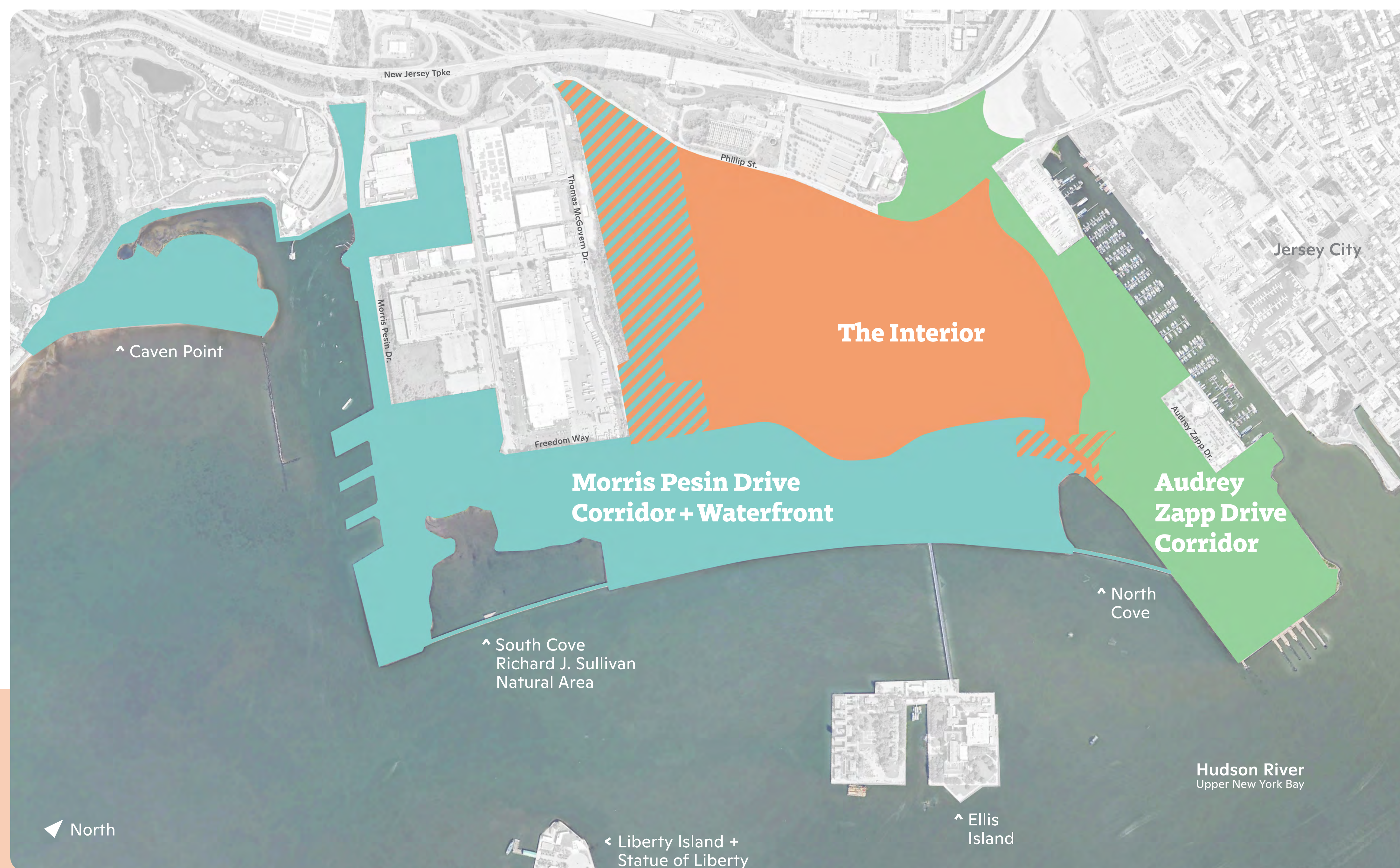
As the next touchpoint in LSP's community engagement process, today is focused on sharing continued progress. At each station, you will have the opportunity to share your feedback on updates related to:

- + Refinements to the Audrey Zapp Drive Corridor, and its path toward priority projects and implementation,
- + Progress toward a Master Plan vision to guide improvements of the Morris Pesin Drive Corridor + Waterfront areas.

This open house provides the final opportunity for public input on the park's future vision, outlined in the forthcoming Holistic Long-term Master Plan, and near final design concepts for immediate improvements along the Audrey Zapp Drive Corridor. To stay up to date on project progress and learn about future points of engagement visit: [dep.nj.gov/revitalizelsp/](https://dep.nj.gov/revitalizelsp/) and sign up for our email list!

## What is the Liberty State Park (LSP) Revitalization Program?

The Liberty State Park (LSP) Revitalization Program will bring more than one hundred acres of active recreational, arts, and cultural improvements to LSP's perimeter and create a central park at its heart with world-class natural landscapes that build resilience to flooding and climate change while providing passive recreation and educational opportunities for the public.



Station 1 focuses on an overview of the LSP Revitalization Program + What is Happening Now!

## The three-phased LSP Revitalization Program includes:

### **The Interior**

Clean up legacy industrial pollution and complete ecological restoration with nature-based climate resilience features  
Create a central park with 6 miles of trails, overlook views, and a variety of habitats through the cleanup and restoration of the long-fenced-off interior

### **Audrey Zapp Drive Corridor**

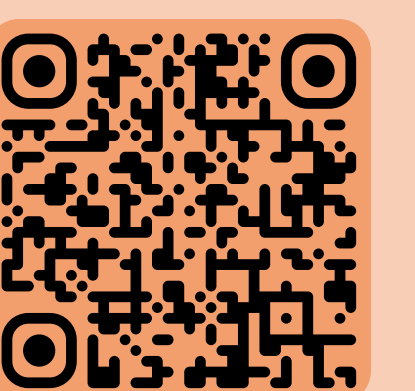
Create Northern Athletics Hub for public outdoor active recreation, including multi-purpose athletic fields and community center  
Develop public arts and cultural spaces, including public outdoor amphitheater and revitalized Central Railroad terminal concourse into community gathering and market space

### **Morris Pesin Drive Corridor + Waterfront**

Plan Southern Athletics Hub to potentially include public track and field center, ball fields, basketball courts, racket courts, and support facilities  
Evaluate feasibility and plan community pool, aquatics center, community gardens, nature-based waterfront enhancements, and other public amenities

## **Learn More:**

Join our email list, by scanning this QR code →  
or by visiting the Revitalize LSP website:  
[dep.nj.gov/revitalizelsp/](https://dep.nj.gov/revitalizelsp/)



STATION 1: WELCOME + WHAT IS HAPPENING NOW

Station

#1

**Liberty State Park Revitalization Program**

OPEN HOUSE: January 25, 2025 - Liberty Science Center, 222 Jersey City Blvd, Jersey City, NJ



NEW JERSEY  
DEPARTMENT OF  
ENVIRONMENTAL  
PROTECTION

with:

ARUP

WRT

WXY

Vision

Biohabits

Studio

MATRIX

NEW WORLD

PACA

HRVA



# LSP Open House: Attendee Survey!

## QUESTIONS:

### What is your age range?

Place a dot in one response below:

**Born 1901-1927**

The Greatest Generation

**Born 1928-1945**

The Silent Generation

**Born 1946-1964**

Baby Boomer Generation

**Born 1965-1980**

Generation X

**Born 1981-1996**

Millennial (Generation Y)

**Born 1997-2010**

Generation Z (Gen Z)

**Born 2010-Present**

Generation Alpha

**Prefer Not to Share**

### How long have you been visiting Liberty State Park (LSP)?

Place a dot in one response below:

**Today / This is my first time!**

I have never been to LSP before

**0-5 years**

I am a newer neighbor / park user

**6-10 years**

I have been coming to LSP for almost a decade

**11-20 years**

I have been coming to LSP for more than a decade

**21-30 years**

I have been coming to LSP for a significant time

**31-40+ years**

I have been coming to LSP since it opened in 1976

**50+ years**

I came here before LSP opened in 1976

**Prefer Not to Share**

### Have you previously attended an LSP open house or provided comment?

Place a dot in one response below:

**No, this is my first time!**

I have not provided comment previously

**I have only engaged virtually**

Provided feedback online (virtual surveys, listening in, etc.)

**I have only engaged in-person**

Attended previous in-person events (open houses, public meetings, etc.)

**I have engaged both virtually and in-person**

I have provided feedback online and attended previous events

**Share:** If this is your first time participating in an LSP Open House, please be sure to let us know!

STATION 1: WELCOME + WHAT IS HAPPENING NOW

Station

#1

**Are you affiliated with a group or organization that uses LSP regularly?**

Please share on a post-it note here:

**Liberty State Park Revitalization Program**

**OPEN HOUSE:** January 25, 2025 - Liberty Science Center, 222 Jersey City Blvd, Jersey City, NJ



NEW JERSEY  
DEPARTMENT OF  
ENVIRONMENTAL  
PROTECTION

with:

ARUP

WRT

WXY

Vision

Biohabitats

Studio

MATRIX

NEW WORLD

PACA

HR



# LSP Open House: Coming Soon!

## Priority Projects

What is on the horizon for the LSP Revitalization Program:



### Audrey Zapp Drive Corridor



Terminal Plaza



Marina Green



Historic Train Shed



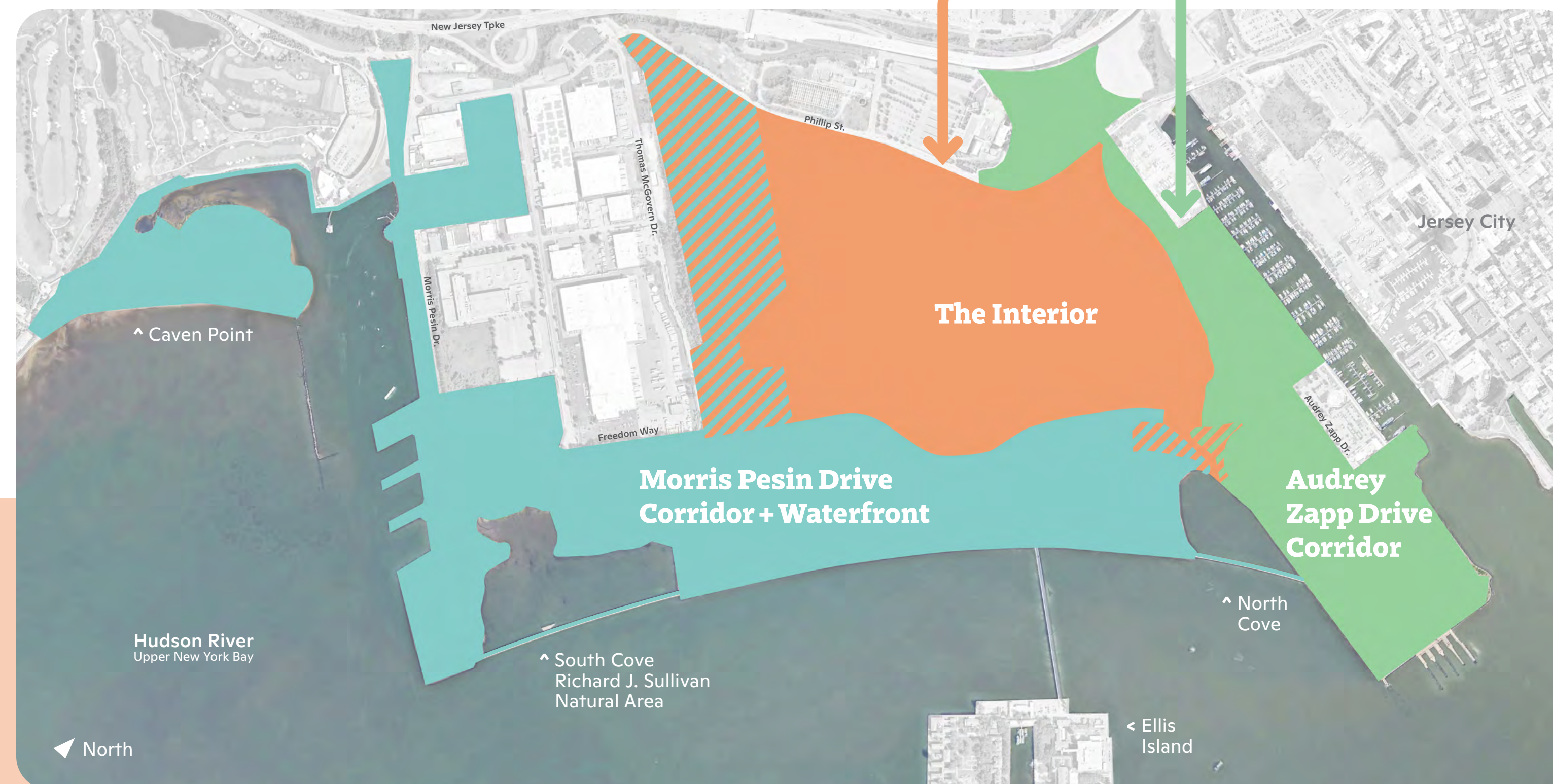
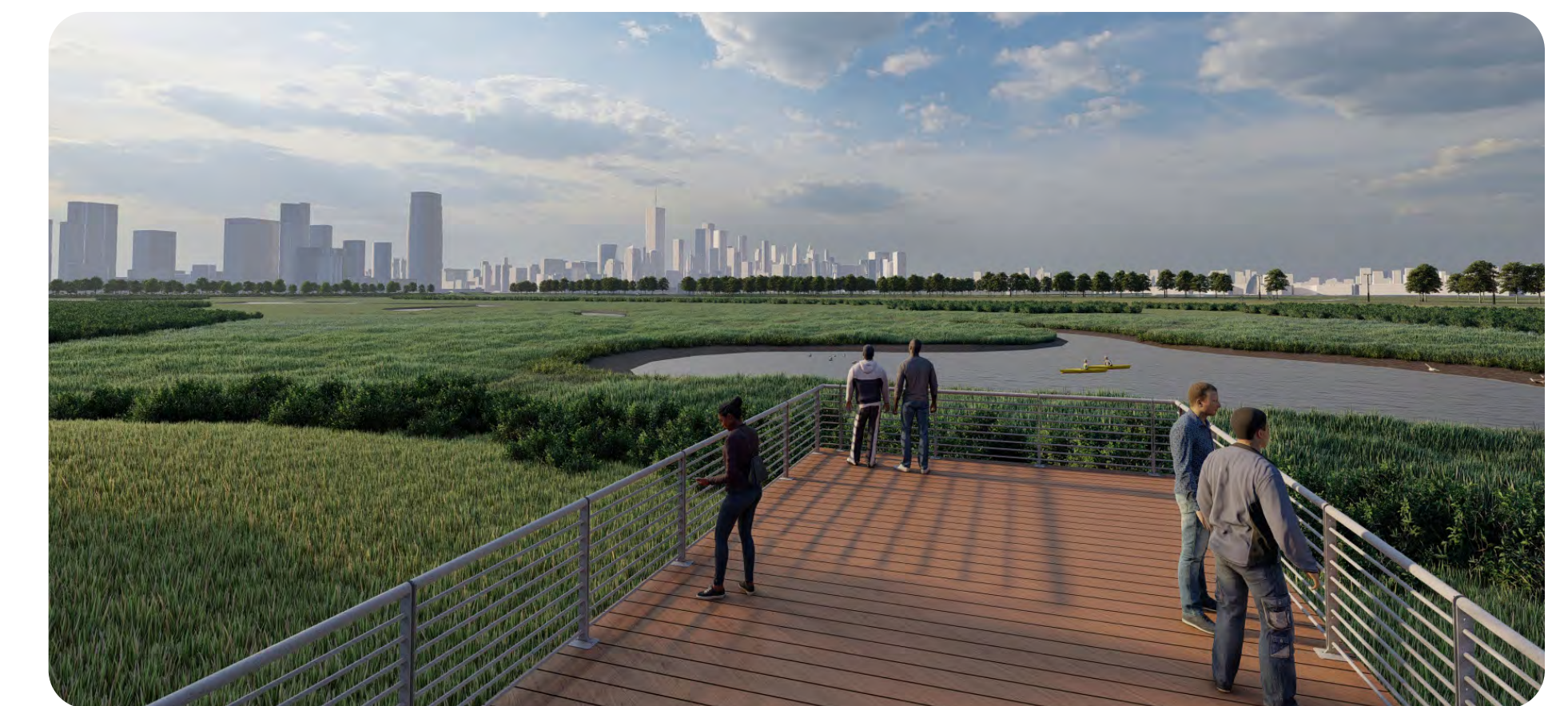
Audrey Zapp Drive Gateway



Funding for the Liberty State Park Revitalization Program comes from federal and state appropriations, including a \$35 million investment by Governor Murphy and the state Legislature in New Jersey's FY25 budget.

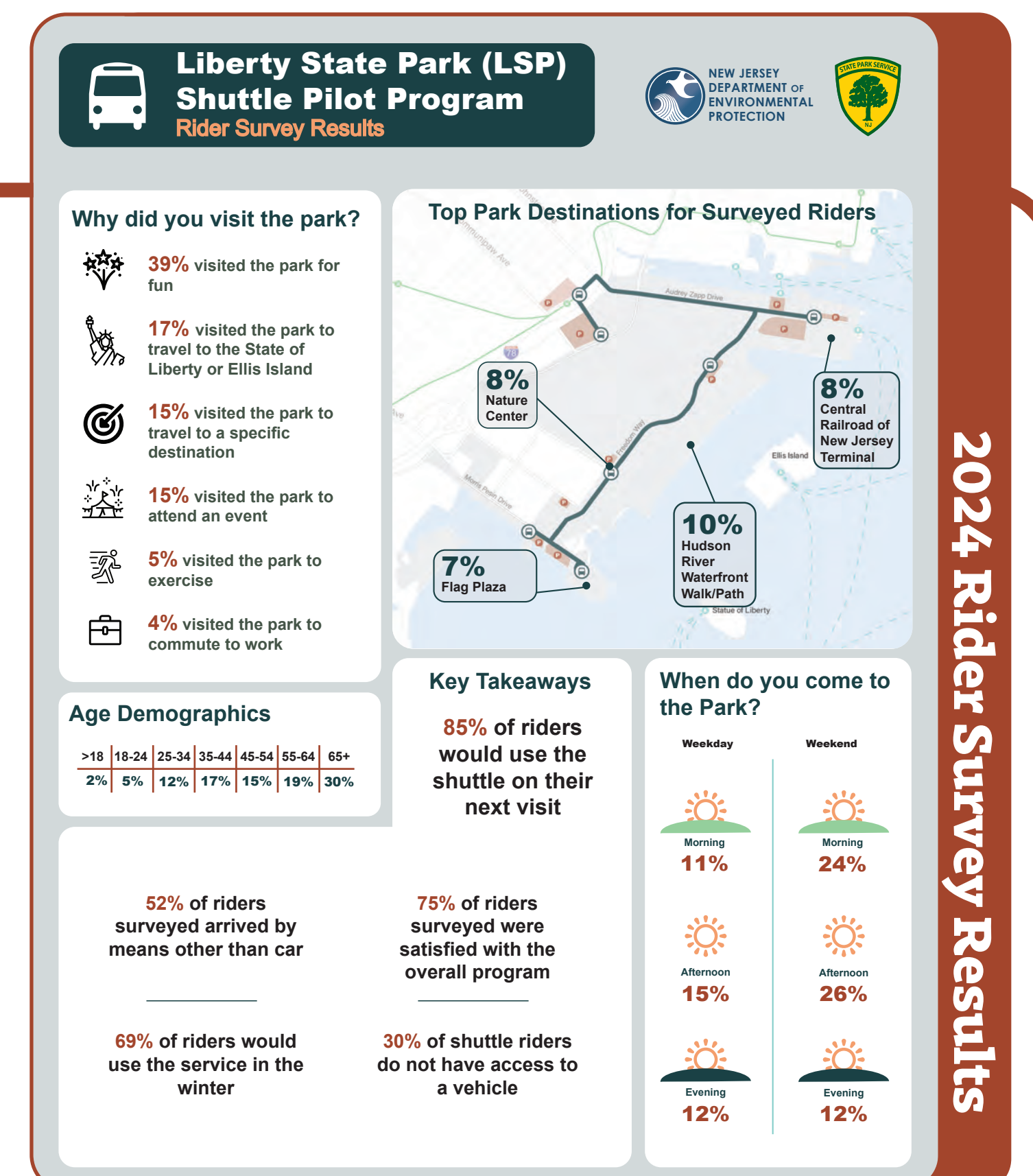


## The Interior



## 2025 LSP Shuttle Program:

The Liberty State Park Shuttle Program will be returning to the park this summer! Last summer's pilot program proved to be a great success, with around 3,700 riders taking the shuttle between July and September. We are excited to continue this free shuttle program for all park users and are looking forward to seeing all of you back on the shuttle again this year. Stay tuned for more information on when the shuttle program will start, and how you can ride the park's free shuttles this summer!



**Liberty State Park Revitalization Program**  
**OPEN HOUSE:** January 25, 2025 - Liberty Science Center, 222 Jersey City Blvd, Jersey City, NJ



NEW JERSEY  
DEPARTMENT OF  
ENVIRONMENTAL  
PROTECTION

with: ARUP



WXY



Biohabitats



MATRIXNEWORLD

PACA

HRV

STATION 1: WELCOME + WHAT IS HAPPENING NOW

Station

#1



# September 28th Open House Summary: What We Heard!

## Engagement Summary:

Key themes, takeaways, and findings from the LSP September 28, 2024 Open House:

Thank you to everyone who attended our LSP Open House on September 28, 2024 and provide public comment in-person + virtually!

Station 3 focused on updates from the Interior.  
For additional Interior updates, visit Station 1 today!

Sept. 28<sup>th</sup>  
Stations:

## 1: Welcome + Sitewide Strategies

Station 1 welcome guests and oriented them to the open house event, specifically situating the context and focus of the engagement on how the LSP Revitalization Program is creating a unified vision for LSP. This station introduced sitewide strategies exploring: visitor experience, mobility design, and frameworks for resiliency and sustainability. Attendees were invited to provide feedback from a LSP sitewide perspective.

### What We Asked:

#### Which zone of LSP do you most want to...

**MAINTAIN:** keep mostly as is (a lighter touch) with some improvements  
**ENHANCE:** introduce new amenities to support park users (passive)  
**TRANSFORM:** diversify programs (active/social) as future destinations



#### What we heard:

**+ MAINTAIN:**  
Caven Point, Passive Pockets along Freedom Way, and Open Green zones were the top zones identified to maintain - with an emphasis on maintaining the existing qualities of Caven Point and LSP's great lawns: South Lawn, Green Ring, Crescent Field, Green Park and North Field  
**+ ENHANCE:**  
The Interior, Nature Center, and The Jetties were top priorities to enhance - The Interior received votes based on its current proposed plans, and Nature Center and Jetties were identified with desires to preserve the quality of these existing spaces, with increased access, programs and experiences  
**+ TRANSFORM:**  
The Shed, Athletics Hub, and Morris Pesin Drive Gateway were priorities to transform - The Shed received the top votes for its potential for transformation, followed by the Southern Athletics Hub and entry Gateway to the southern area and waterfront along the Morris Pesin Drive Corridor

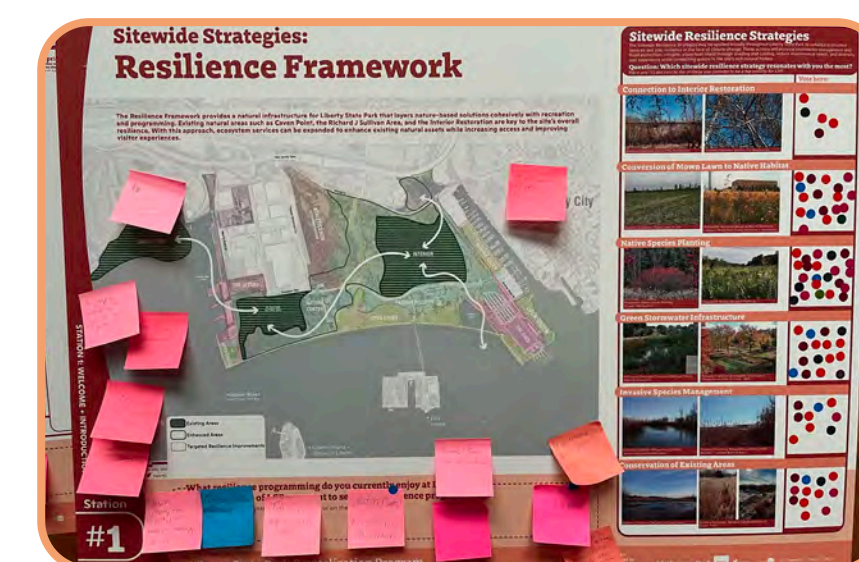
#### Which sitewide mobility objective is most important to you?



#### What we heard:

**+ CONNECTIVITY, SAFETY + ACCESSIBILITY, AND SUSTAINABILITY + RESILIENCY:**  
All three (3) mobility design objectives are important for LSP, with a focus on minimizing vehicular congestion entering and exiting the park, while understanding future demands and needs of park users - feedback around other priorities for mobility included goals of:  
Less pollution, and less people using cars  
Expanded LSP Shuttle (with an app?)  
Dedicated bicycle facilities and circulation (bike share program)  
More accessible touchpoints with park infrastructure (bathrooms)  
Minimizing vehicular congestion, but still providing much needed vehicular access and parking, specifically for: accessibility, seniors, families with kids or supplies  
A focus on gateways: safety, traffic flow, and extending safe connections beyond LSP - including: safe connections for non-car users from Greenville neighborhood via Bayview Ave, and other access across I-78 highway

#### Which sitewide resilience strategy resonates with you the most?



#### What we heard:

**+ NATIVE SPECIES PLANTING + HABITAT:**  
The Resilience Framework provides a natural infrastructure for LSP that layers nature-based solutions cohesively with recreation and programming. Existing natural areas such as Caven Point, the Richard J Sullivan Area, and the Interior are key to the site's overall resilience, expanding ecosystem services to enhance existing natural assets while increasing access and improving visitor experiences in the park.  
Feedback focused on resilience strategy priorities of:  
- native species planting,  
- conversion of mown lawn to native habitat, and green stormwater infrastructure, but many recognized the importance of all strategies working together  
The necessity of more trees and native plants to increase shade throughout the park was a key finding across many comments

## 2: Audrey Zapp Drive Corridor

Station 2 focused on the Audrey Zapp Drive Corridor, and sharing progress of the updated concept plan, and its path toward implementation. The updated conceptual approach identified priority projects toward implementation. This station highlighted programming, built systems, circulation systems, active recreation opportunities, the Train Shed, and visualizations of three specific areas of the plan: the Woodland Walk, Marina Green, and North Cove.

### What We Asked:

#### Feedback on updated programming and concept plan:

Where would you like to spend your time?  
How can new facilities (restrooms, shade, concessions) enhance your park experience?  
Do the proposed pedestrian, bike, and transit systems get you where you want to go?



#### What we heard:

**+ SUPPORT FOR CONCEPT PLAN PROGRESS:**  
General consensus that the concept plan is responding to public comment - attendees were excited to see more passive design elements incorporated into the concept plan, promoting a balance of flex spaces (more informal and unstructured) with program areas across the Audrey Zapp Drive corridor.  
**+ DISTRIBUTED AMENITIES TO ENHANCE USER EXPERIENCE:**  
The Audrey Zapp Drive corridor received a lot of positive comment around the proposed distribution of proposed amenities, specifically related to: more restrooms, more trees and nature to provide shade, and transportation and mobility - with desires to separate pedestrians and biking infrastructure from vehicles.  
**+ SAFETY AND FREQUENCY OF MOBILITY SYSTEMS:**  
Attendees shared their excitement around shuttle and circulation at LSP, with a desire for reducing barriers to access to create a user-friendly system.

#### What do you think of these visions for:

**MARINA GREEN:** what do you like to do at a picnic with friends and family?  
**WOODLAND WALK:** what would you like to do and see when walking in the woods?  
**NORTH COVE:** what makes for a good day at the beach?



#### What we heard:

+ Feedback around priorities for program or park spaces that support what open house attendees would like to do at the Marina Green location:  
Park spaces, trees and shade  
Places to gather together  
Support programs and amenities  
restrooms



+ Preference for a woodland walk area at LSP that could consider how to extend connections between Audrey Zapp Drive and the Interior:  
Trees as a top priority  
an escape, shade, habitat  
Paths and Observation  
with educational opportunities

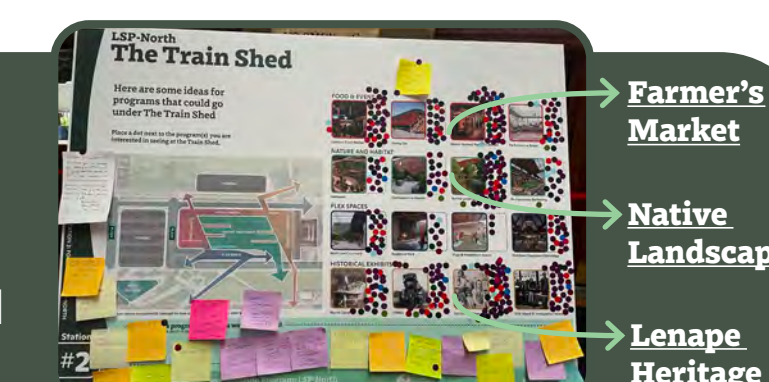


+ Feedback was largely focused on the beach as a program, and considerations for how to activate the North Cove zone:  
Some attendees were excited for a beach, some hope for a more 'natural' look  
Desire to not overload the space with program, and how the beach could help to protect the park from storms

#### The Train Shed

This station also shared the work underway for the Train Shed, including: the current structural assessments, testing and borings being conducted, and timelines for how the Train Shed will be preserved through historic preservation processes.

Attendees were asked what programs they thought would fit best under the Train Shed ^



3\*

Station 3: Updates on LSP's Interior

## 4: Morris Pesin Drive Corridor + Waterfront

Station 3 built on the feedback and public comment received during the May open house, and virtual surveys. This station guided public feedback around master plan visioning and phased improvements of the Morris Pesin Drive corridor and waterfront areas, exploring programmatic opportunities, and priorities related to: gathering nodes, active recreation, play, water activation, the great lawns, and the Southern Athletics Hub and active recreation.

### What We Asked:

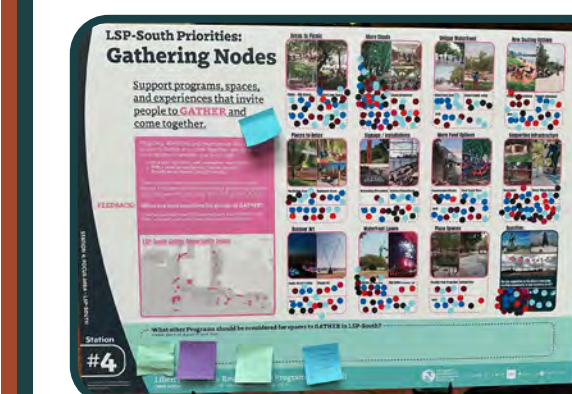
#### What would you be most excited to do in the waterferfront area in the future (that you cannot do there currently):

#### What we heard:

**+ ACCESS TO THE WATER:**  
Desire to alter the continuous edge condition at the Hudson River Waterfront Walk, and excitement for more opportunities to walk, sit and interact with the water (including areas to support fishing, and more shade along the waterfront)  
**+ BUFFERS AND TRANSITIONS BETWEEN PROGRAMS + ACCESS:**  
Appreciation for the transitions and buffers between specific zones (ex: buffer between the active recreation areas and the Interior zone)  
Desire to consider how the plan can extend from LSP to create more, and safer, access and connections to the Greenville neighborhood  
Appreciation for the lighter touches shown at Caven Point, and limiting changes to significant natural areas in LSP-South, with a focus on increasing access for observation in these areas  
Consideration of how to preserve the qualities of unique spaces (like the Jetties) and balance their experience with programming  
**+ POSITIVELY INCORPORATING PUBLIC COMMENT:**  
The LSP-South programmatic opportunity diagram received significant support from open house attendees, specifically related to the distribution of proposed amenities, programs, and the respect it shows to areas of the waterfront that are of significant importance to the community and park users. Comments at this station also reflected positive response to seeing feedback previously shared actively incorporated in the plan's progress: "Love how this has respected the lawns + views + still proposing opportunities: Balance"



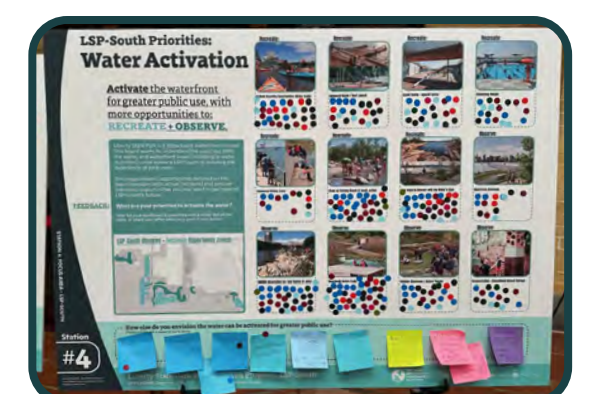
#### What we heard:



+ Gathering priorities included:  
1. More Shade (shade trees/structure - including waterfront edges)  
2. Supportive Infrastructure (restrooms, water filling stations)  
3. Areas to Picnic  
4. Waterfront Lawns (for passive enjoyment and larger events)  
5. New seating options (passive benches and group/conversational)



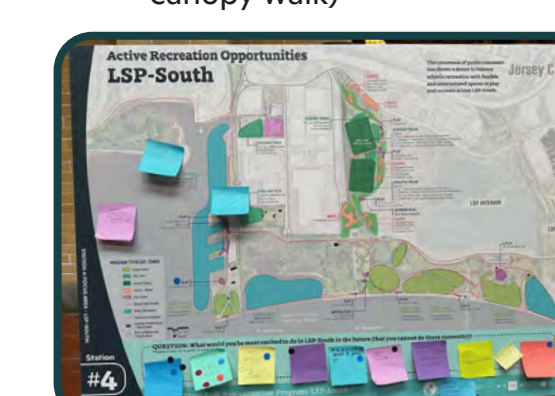
+ Play priorities included:  
1. Habitat trail play encounters / affordances  
2. Water-themed play (educational / spray pad)  
3. Nature play - exploring / climbing in nature  
4. Inclusive play  
5. Exploration-themed play (tree canopy walk)



+ Water priorities included:  
1. Boardwalk nature trails  
2. Clean-up of existing beach at South Jetties  
3. Spaces for wildlife observation (ex: seals at Jetties)  
4. New ways to interact with the water's edge  
5. Defined kayak opportunities (including water trails)



+ Showcasing the different ways that LSP's great lawns are used today, and contribute to a waterfront destination. How the Great Lawns can support everything from passive everyday uses, but also support flexible uses that invite larger crowds, all received positive feedback and support



+ Recreation Areas, Types + Focus: Great Lawns  
Focus: passive recreation, unstructured play, gathering, temporary activation (events)  
Flex Lawns  
Focus: multi-purpose spaces, 'pick-up' games, unstructured play

Cont: **Athletic Fields**  
Focus: capacity for larger striped, or multi-purpose fields to support specific athletics, sports, or team uses (Southern Athletics Hub)  
**Courts + Wheel**  
Focus: basketball, badminton, bocce, tennis, pickleball, skate park, fitness pods, and bike pump track received top comments  
**Play Spaces**  
Focus: nature play, active play, recreation play, sensory and inclusive play with movement  
**Shared Bike Routes**  
Focus: biking as a form of recreation with different speeds  
**Water Recreation**  
Focus: kayaking, water trails, fishing, boat launch, teach water safety

## Key Themes + Takeaways:

### Station 1:

Results from Station 1 revealed a consensus and excitement for:

- + More sitewide strategies related to visitor experience - specifically related to access, safety, mobility systems, resiliency, and how exciting it is to see that all areas of LSP are working together to achieve a unified vision for LSP's future by connecting the various areas and phases of work currently underway;
- + Achieving a balance in terms of programming and activating the site - with a focus on providing unique experiences for different user groups across the park (not just one consistent character or experience applied everywhere).

### Station 2:

Results from Station 2 revealed a consensus and excitement for:

- + A major priority identified was on the focus of the Audrey Zapp Drive corridor to be a place for flexible recreation opportunities, with unstructured open lawns providing flexibility that meets the majority of user needs, according to open house attendees;
- + Enhanced considerations for safety and ease of user access entering the park;
- + Desires to reconsider "forgotten spaces" along the Audrey Zapp Drive corridor (around the 9/11 Memorial, the lawn north of the Terminal Building, etc), and how the priority projects can be distributed to activate park spaces along the corridor.

### Station 4:

- + Excitement around the progression of the master plan for the southern, waterfront areas
- + The importance of a track and field on the site was expressed, as well as multi-use options that could support the needs of larger user groups
- + Significance of the Great Lawns as waterfront destinations: Incredible support shown for the great lawns as significant waterfront open spaces, that can flexibly support passive activation (grass, open space, preserving the views, and prioritizing non-permanent infrastructure for flexible use), but also support temporary uses that invite larger crowds - all received positive feedback from open house attendees

STATION 1: WELCOME + WHAT IS HAPPENING NOW

Station

#1

Liberty State Park Revitalization Program

OPEN HOUSE: January 25, 2025 - Liberty Science Center, 222 Jersey City Blvd, Jersey City, NJ



NEW JERSEY  
DEPARTMENT OF  
ENVIRONMENTAL  
PROTECTION

with: ARUP



WXY



Biohabitats



MATRIX

NEWORLD

PACA

HRX



# We want to hear from YOU: TIME CAPSULE!

**Leave a message for future park users:**

Share messages about LSP today, or predictions for LSP's future:



## Prompt:

### A Time Capsule for LSP!

**We are here today to think  
and dream about the future of  
Liberty State Park (LSP), and  
**WE NEED YOUR HELP!****

#### How can you help?

**We want to collect memories of  
the park today, and predictions  
for the park in the future, as  
part of a time capsule leading  
up to Liberty State Park's 50th  
anniversary in 2026!**

- + SHARE a note (on one of the comment cards provided) for future park users!
- + THINK about what you love about the park TODAY, or what you hope to see in Liberty State Park's FUTURE!

#### + **How to participate:**



#### **Consider the following prompts:**

Pick a comment card, share your stories, memories and goals for LSP, and post them to the right!

**Share:** Choose a comment card, and respond to one of the following prompts!

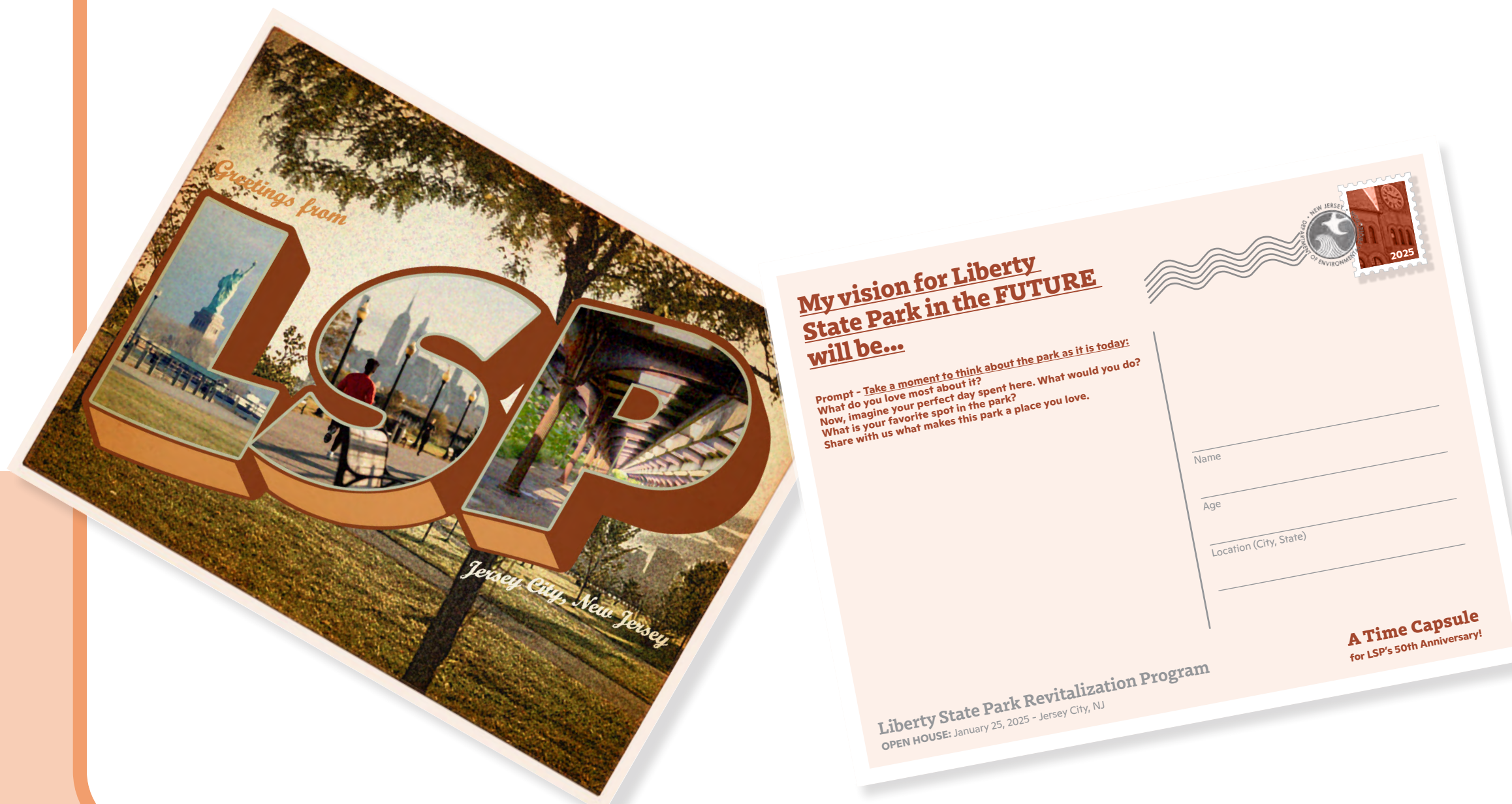
## Place your messages here:

### What I want future park users to know about Liberty State Park TODAY:

**Prompt - Take a moment to think about the park as it is TODAY:**  
What do you love most about it?  
Now, imagine your perfect day spent here. What would you do?  
What is your favorite spot in the park?  
Share with us what makes this park a place you love.

### My vision for Liberty State Park in the FUTURE will be...

**Prompt - Now, take a moment to think about the park in the FUTURE:**  
Leave a message for future visitors —  
What would you want them to appreciate about the park?  
Or, consider your future vision for the park —  
What do you hope to see?



Station

#1

**Liberty State Park Revitalization Program**

OPEN HOUSE: January 25, 2025 - Liberty Science Center, 222 Jersey City Blvd, Jersey City, NJ



NEW JERSEY  
DEPARTMENT OF  
ENVIRONMENTAL  
PROTECTION

with:

ARUP

WRT

WXY

Vision

Biobehaviors

studio

MATRIX

NEW WORLD

PACA

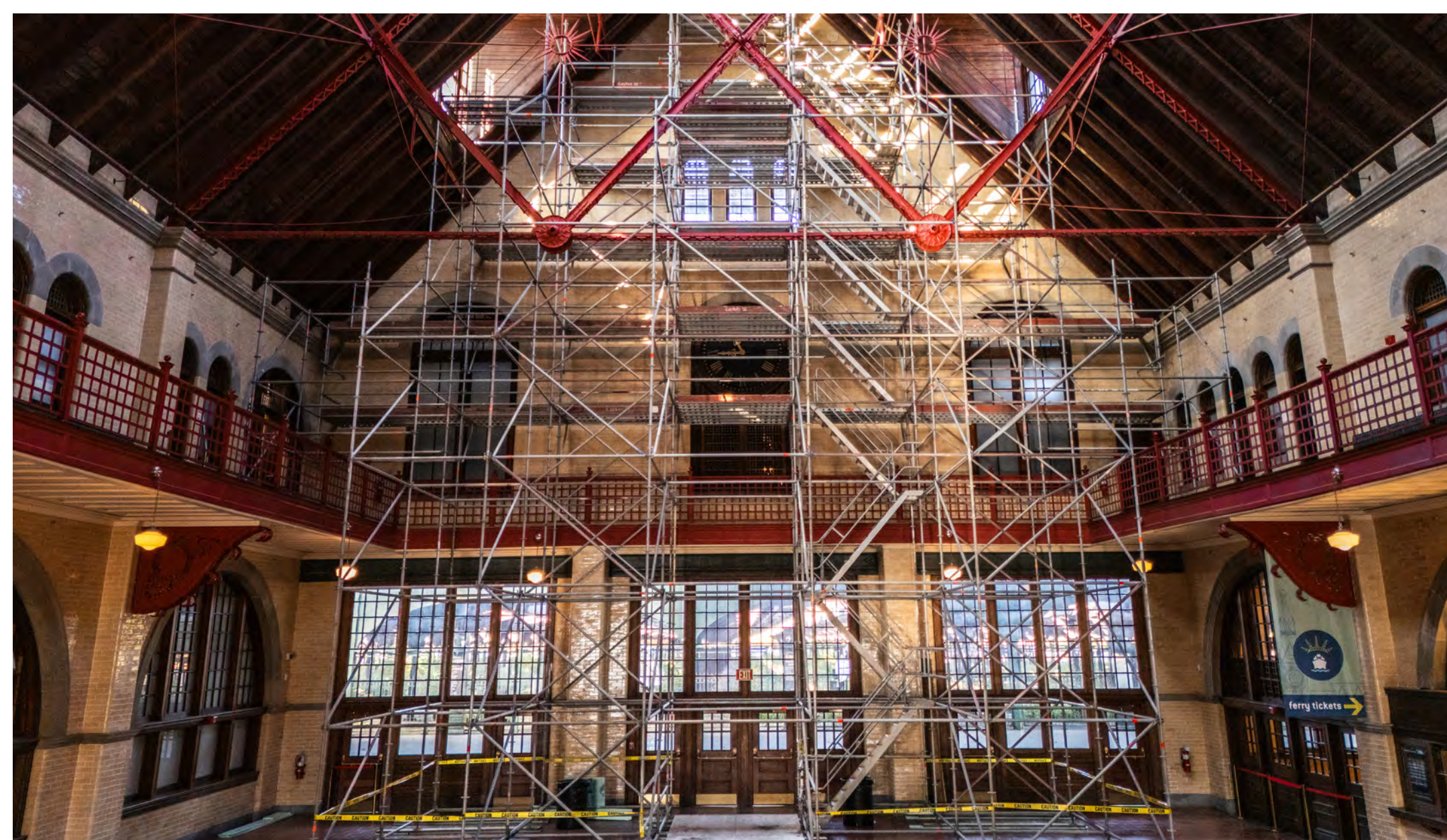
HEX



# Ongoing Work: CRRNJ Terminal Restoration

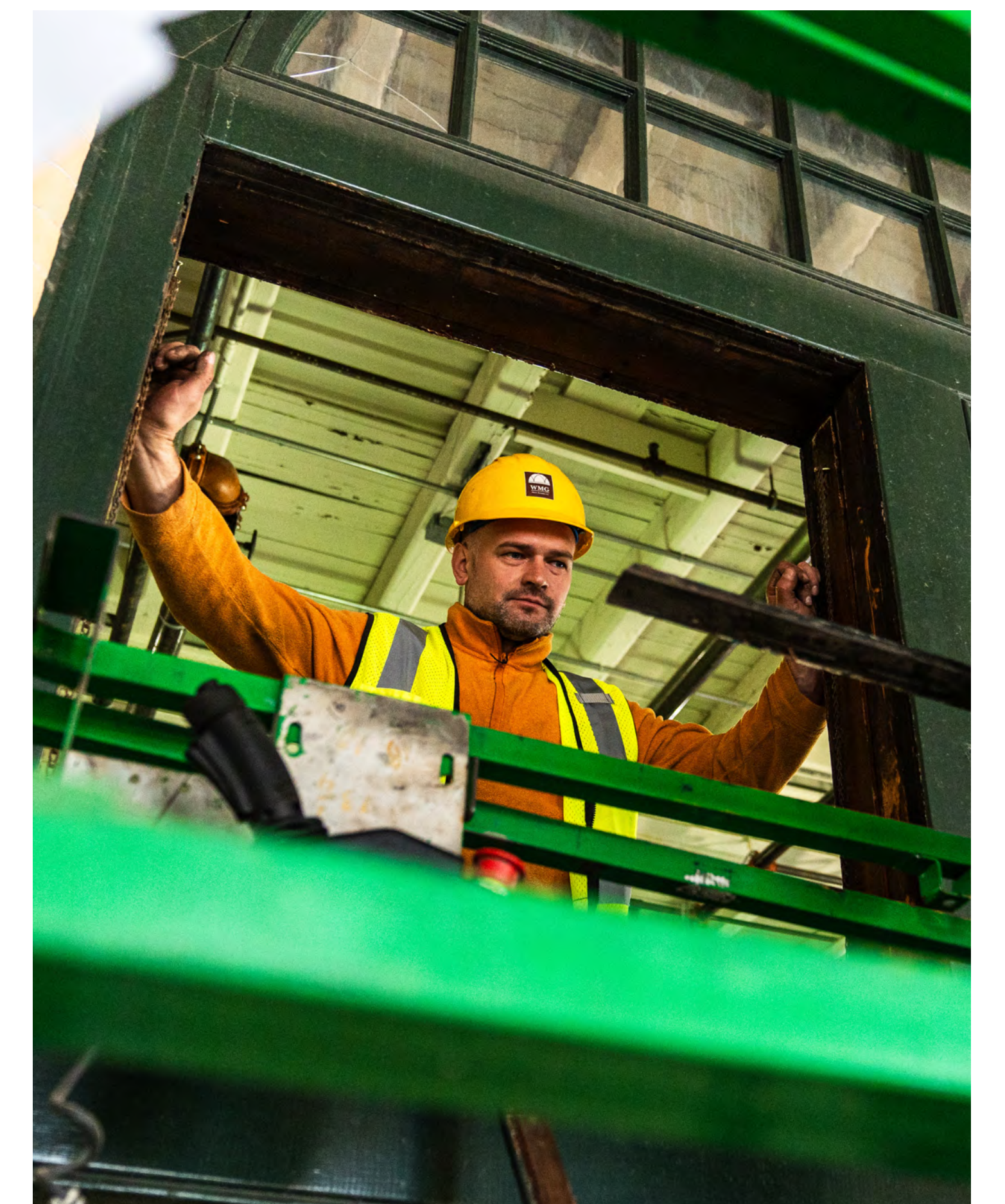
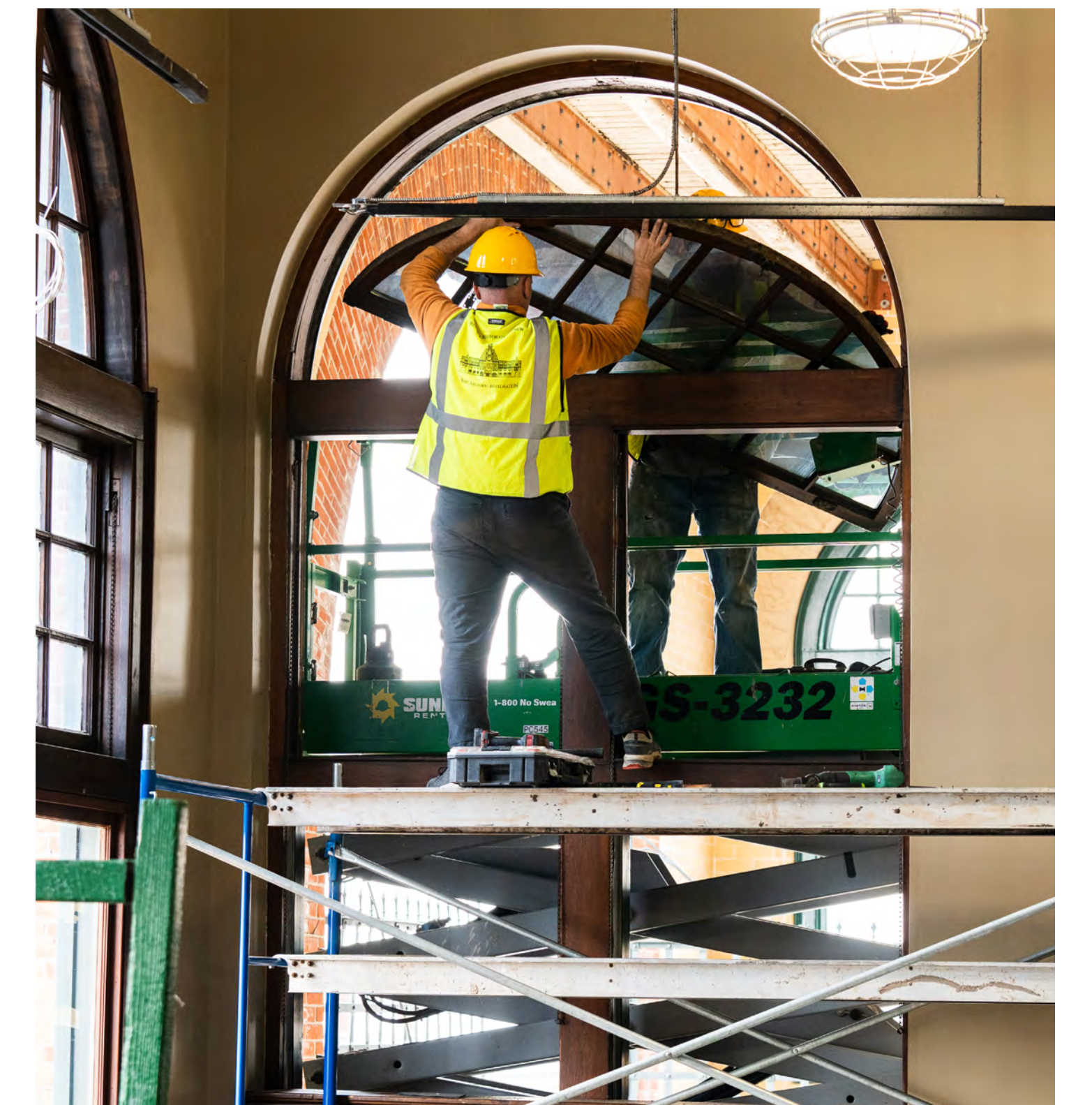
## WEST GABLE WALL

Contractors have completed repointing of the building's brickwork, which involves removing old mortar and replacing it with new to prevent water damage and crumbling.



## WINDOW RESTORATION

More than 300 windows are being carefully removed and transported off-site for restoration to their original condition. To protect and secure the building during this process, plywood will temporarily cover the openings left behind.



STATION 1: WELCOME + WHAT IS HAPPENING NOW

Station

#1

Liberty State Park Revitalization Program

OPEN HOUSE: January 25, 2025 - 222 Jersey City Blvd, Jersey City, NJ



NEW JERSEY  
DEPARTMENT OF  
ENVIRONMENTAL  
PROTECTION

with:

ARUP

WRT

WXY

Vision

Biohabitats

Studio

MATRIX

NEWORLD

PACA

HR

HR



# Ongoing Work: Ferry Slips

The New Jersey Department of Transportation, in partnership with the New Jersey Department of Environmental Protection, will soon be constructing and overseeing two waterfront projects at Liberty State Park; installation of a new floating dock used to load passengers on to ferries destined for the Statue of Liberty and Ellis Island and restoration of the historic ferry slips in front of the Central Railroad of New Jersey Terminal.

## Floating Dock for Statue of Liberty Ferries

A new gangway structure, fixed pier, and floating dock will be installed south of the park's historic ferry slips. The new dock replaces a previous barge that partially sank during the winter of 2020. Since then, ferry passengers have been using one of the historic ferry slips at the Central Railroad Terminal. The new facility will enhance service for ferry passengers traveling to the Statue of Liberty and Ellis Island.

In addition to serving tourists, the floating dock is designed as a modern, safe resource for waterborne emergency response in the New Jersey–New York region. The barge will have the ability to accommodate up to four ferries simultaneously should the need arise.

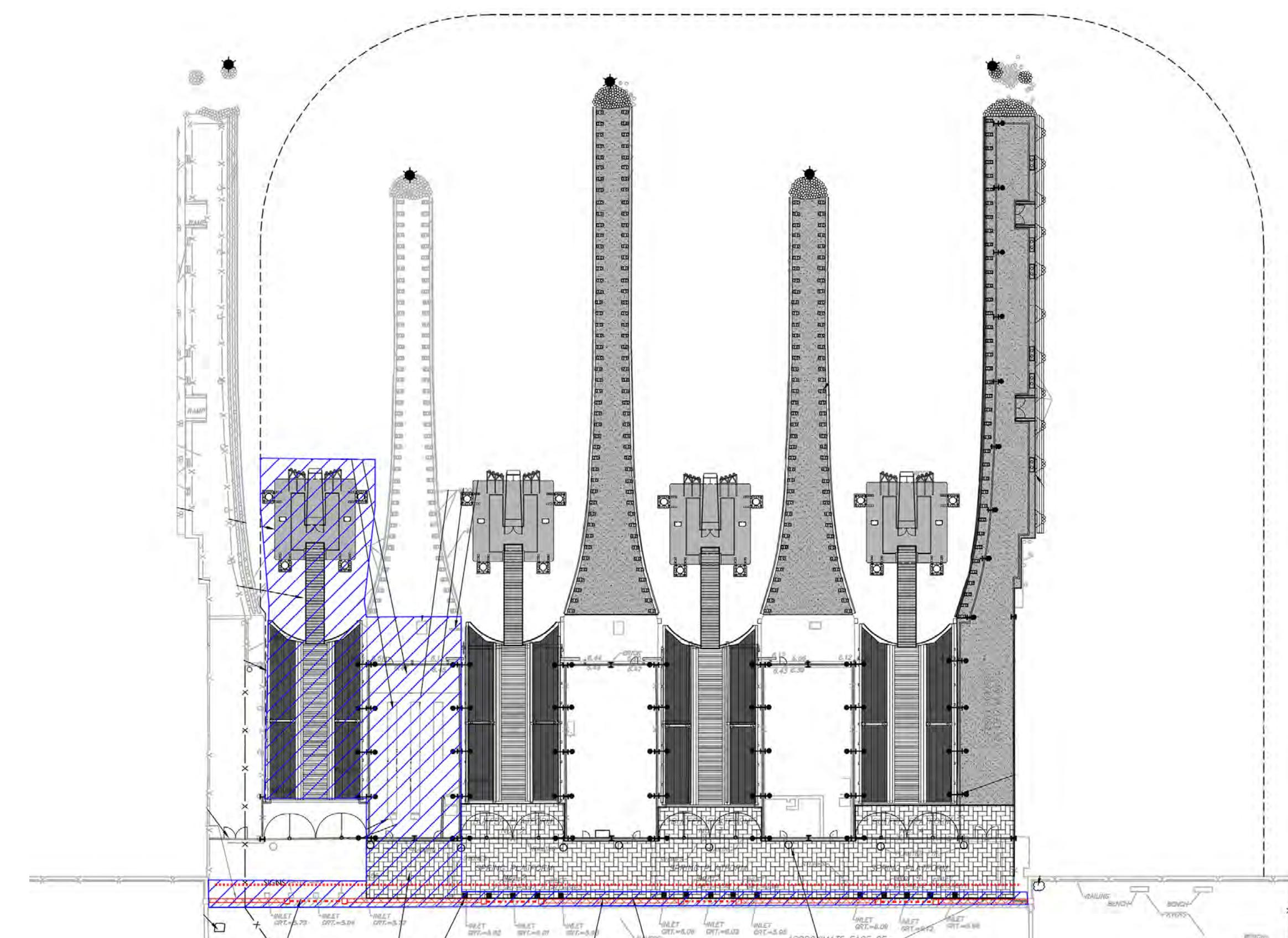
Groundbreaking for the floating dock project is planned for 2025.

## Historic Ferry Slip Restoration

Restoration of the five historic ferry slips in front of the Central Railroad Terminal is in the planning and design process.



Floating Dock for Statue of Liberty Ferries



Historic Ferry Slip Restoration

Liberty State Park Revitalization Program

OPEN HOUSE: January 25, 2025 - 222 Jersey City Blvd, Jersey City, NJ



NEW JERSEY  
DEPARTMENT OF  
ENVIRONMENTAL  
PROTECTION

with:

ARUP

WRT

WXY

Vision

Biohabitats

Studio

MATRIX

NEWORLD

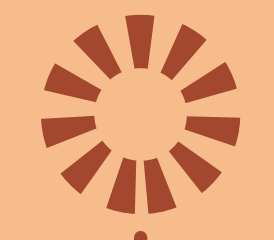
PACA

HR

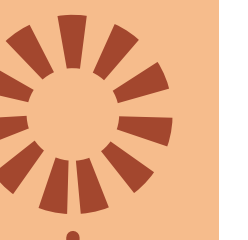
HA



# Ongoing Work: Interior Restoration Timeline



Work to clean up 230+ acres of Liberty State Park long closed to the public due to legacy industrial contamination continues:



2023



Commissioner LaTourette hosts groundbreaking ceremony



Site preparation work, including vegetation clearing



90% design milestone

2024



Ground scans conducted to identify unknown buried objects of concern



Confirmatory soil sampling

2025



Geoprobe sampling to build upon prior soil testing

STATION 1: WELCOME + WHAT IS HAPPENING NOW

Station

#1

Liberty State Park Revitalization Program

OPEN HOUSE: January 25, 2025 - 222 Jersey City Blvd, Jersey City, NJ



NEW JERSEY  
DEPARTMENT OF  
ENVIRONMENTAL  
PROTECTION

with:

ARUP

WRT

WXY

Vision

Biohabits

Studio

MATRIX

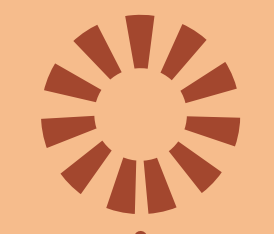
NEW WORLD

PACA

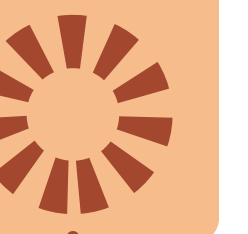
HFA



# Future Vision: Interior Restoration



Once complete, the interior section of Liberty State Park will feature:



Nature-based features  
serving critical climate  
resilience functions



Scenic overlooks



Active recreation  
amenities within the  
Southern Athletics Hub



Urban forests



A 5.6-mile walking and  
running trail network



Gathering spaces with  
seating that feature views  
of the Statue of Liberty and  
New York skyline.

STATION 1: WELCOME + WHAT IS HAPPENING NOW

Station

#1

Liberty State Park Revitalization Program

OPEN HOUSE: January 25, 2025 - 222 Jersey City Blvd, Jersey City, NJ



NEW JERSEY  
DEPARTMENT OF  
ENVIRONMENTAL  
PROTECTION

with:

ARUP

WRT

WXY

Vision

Biobehaviors

studio

MATRIX

NEW WORLD

PACA

HFA