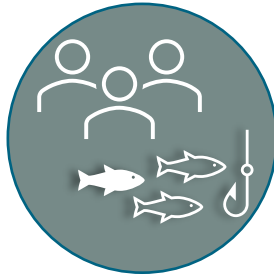


# Approved project updates



Regional Wildlife  
Science Collaborative  
Support



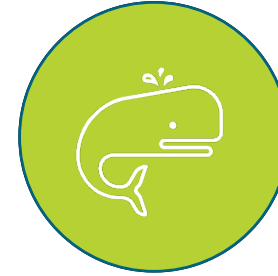
Responsible  
Offshore Science  
Alliance Support



Novel Surfclam  
Survey Dredge &  
Carbonate Chemistry



Gliders for ecological &  
oceanographic monitoring



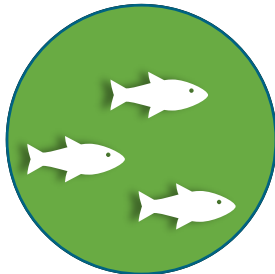
Archival Passive Acoustic  
Monitoring (PAM) for  
baleen whales



Socioeconomics of  
recreational fisheries



Using OSW structures  
as monitoring  
platforms



Acoustic telemetry for  
commercial &  
recreational fish



Environmental DNA as  
an assessment tool  
for fish



Near real-time  
passive acoustic  
monitoring for whales



Harbor seal  
tracking & health  
assessment

# Questions/Feedback from the ERWG

- How is the RMI coordinating across the region?
  - RWSC/ROSA membership reflects support of leveraging regional entities
  - Regional efforts
    - Surfclam Survey
    - Glider project
    - Recreational fisheries socioeconomics
    - Harbor seal tagging project
    - Archival PAM deployment RFP
    - Near real-time PAM†
    - Observing guidance†
  - Collaboration Session at Wind Institute Research Symposium
  - Data will be publicly available to be used in future regional analyses

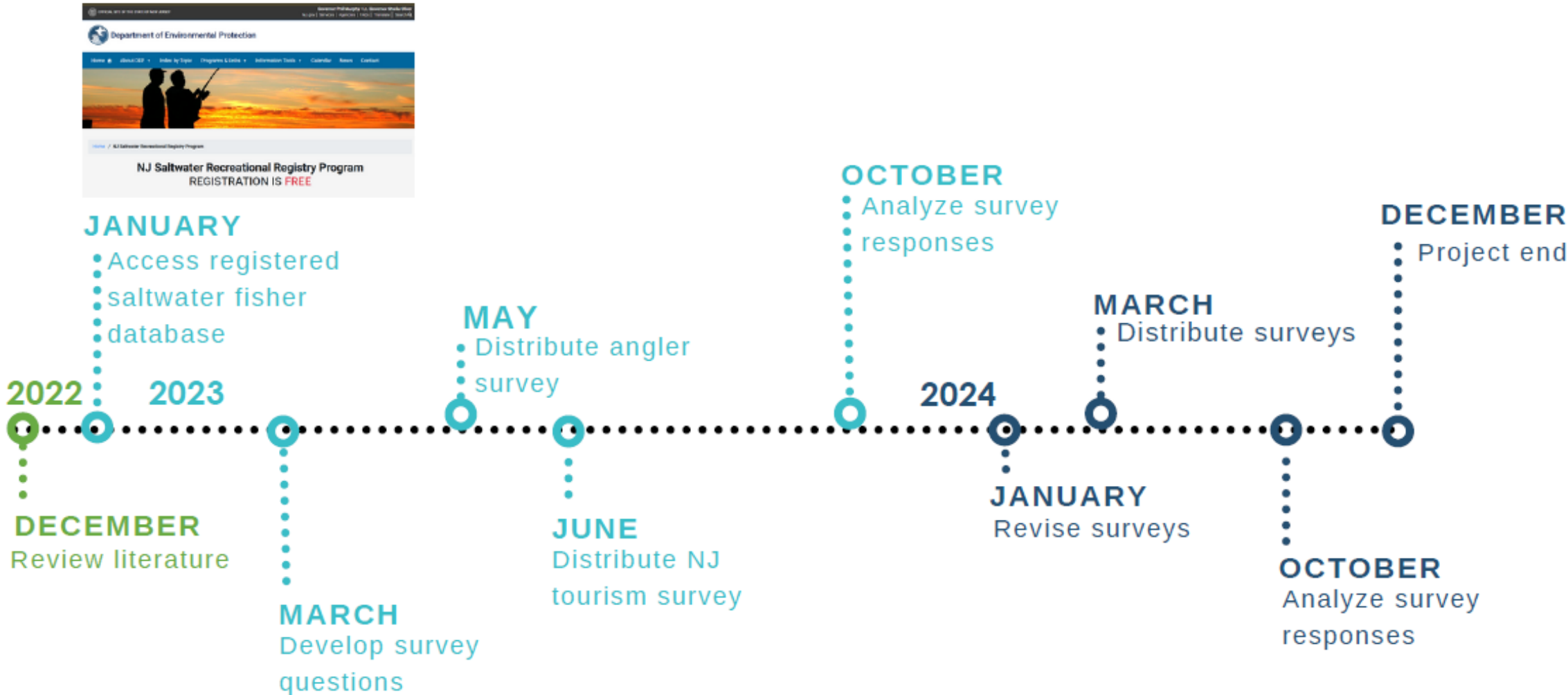
†Project deliverables include peer-reviewed publications

# Questions/Feedback from the ERWG

## ○ How is the RMI being transparent?

- Asking for input on Research Priorities through meetings & survey
  - 2021 Highest-priority research needs list survey
- Second stakeholder survey (October 2022)
- March 2023 Public engagement meeting/Request for Comment on updates to RMI priorities
- Engagement at public wind research events, e.g.:
  - NYSERDA State of the Science Workshops
  - Rutgers Wind Symposium
  - New Jersey Wind Institute Research Symposium
- Project status updates on the website
- Social media posts
- Press releases on awarded projects

# Project status updates

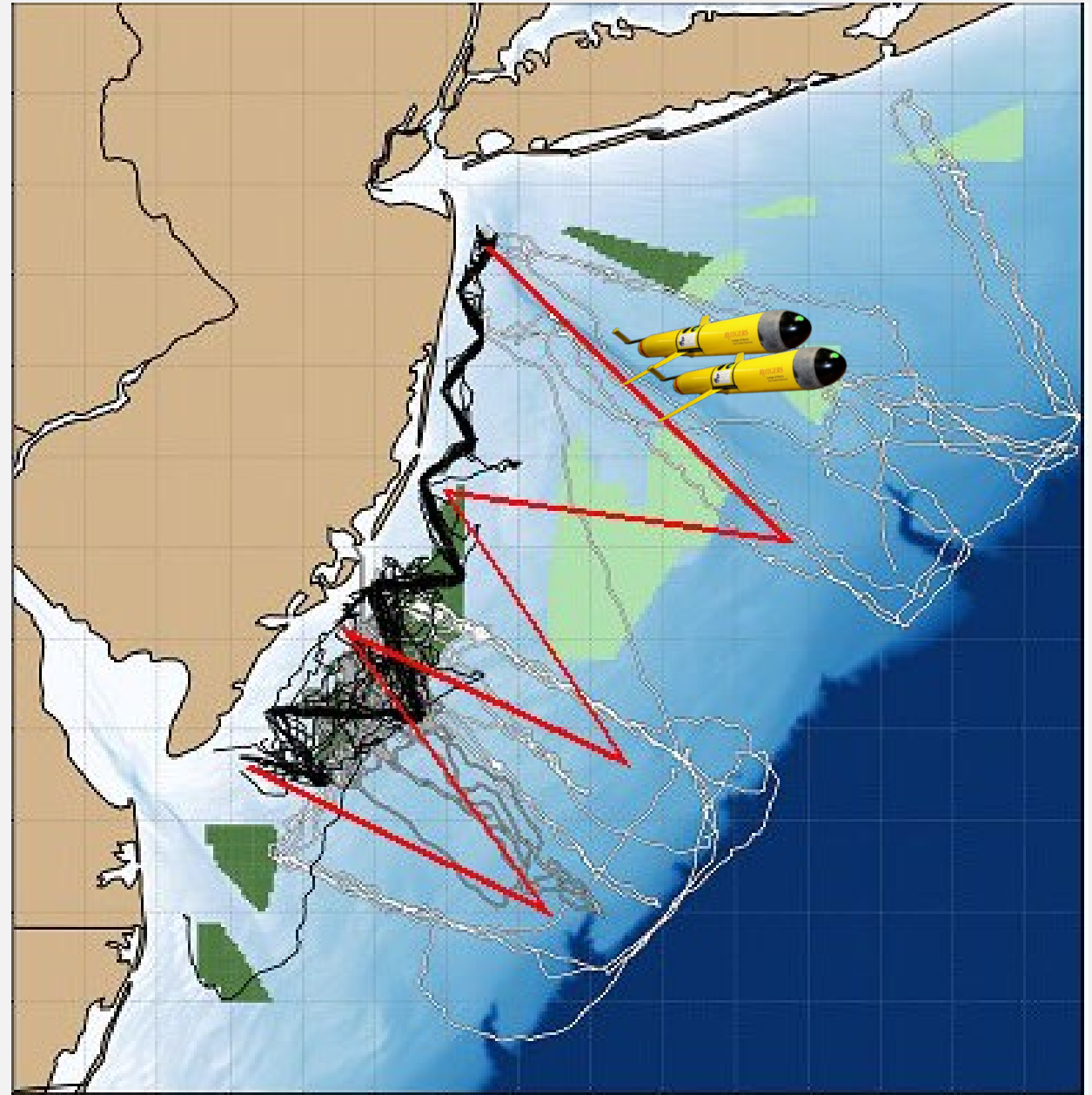


## Rugters University



# Eco-gliders

Rutgers University





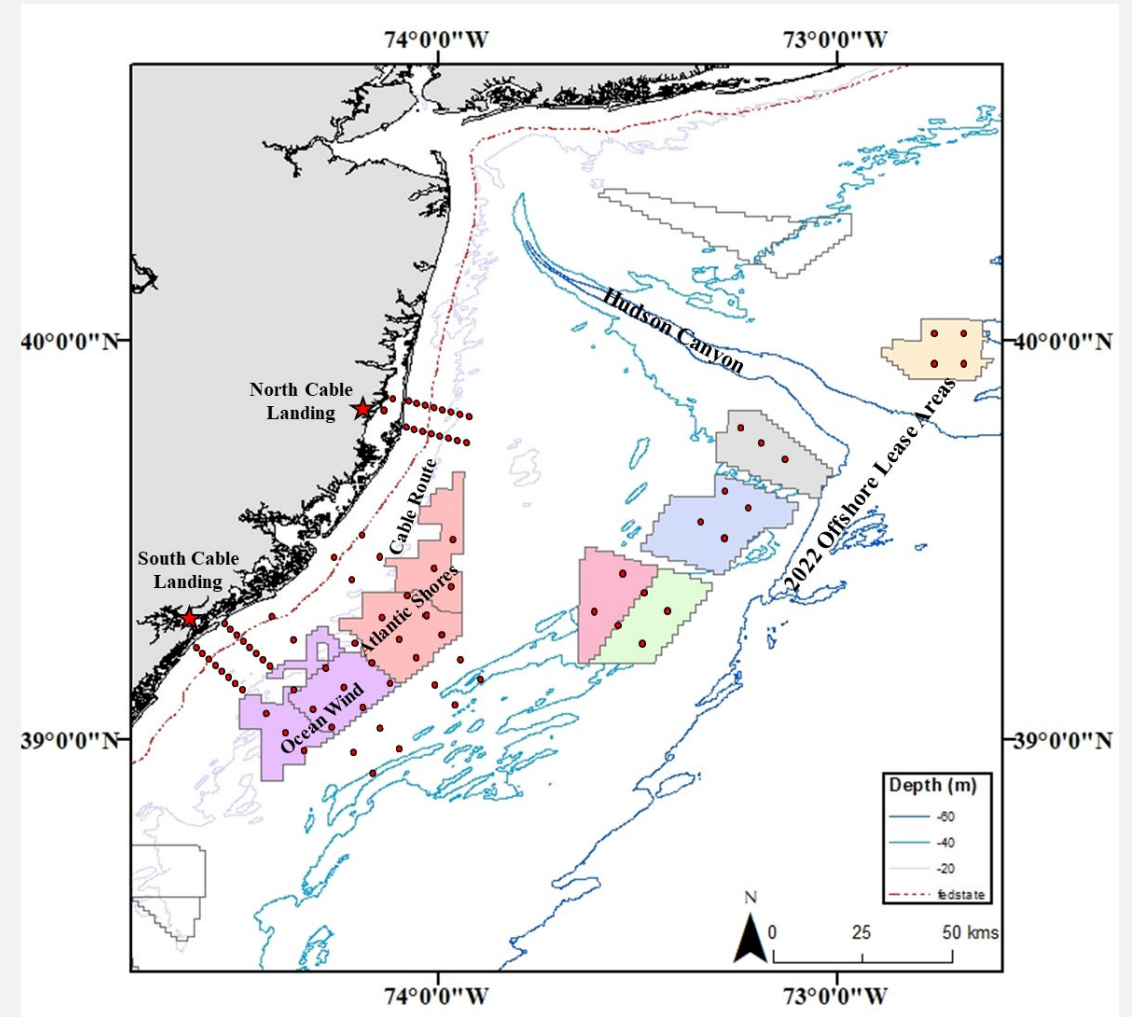
# Recreational fisheries socioeconomics

Montclair State University



# Acoustic telemetry

Monmouth University





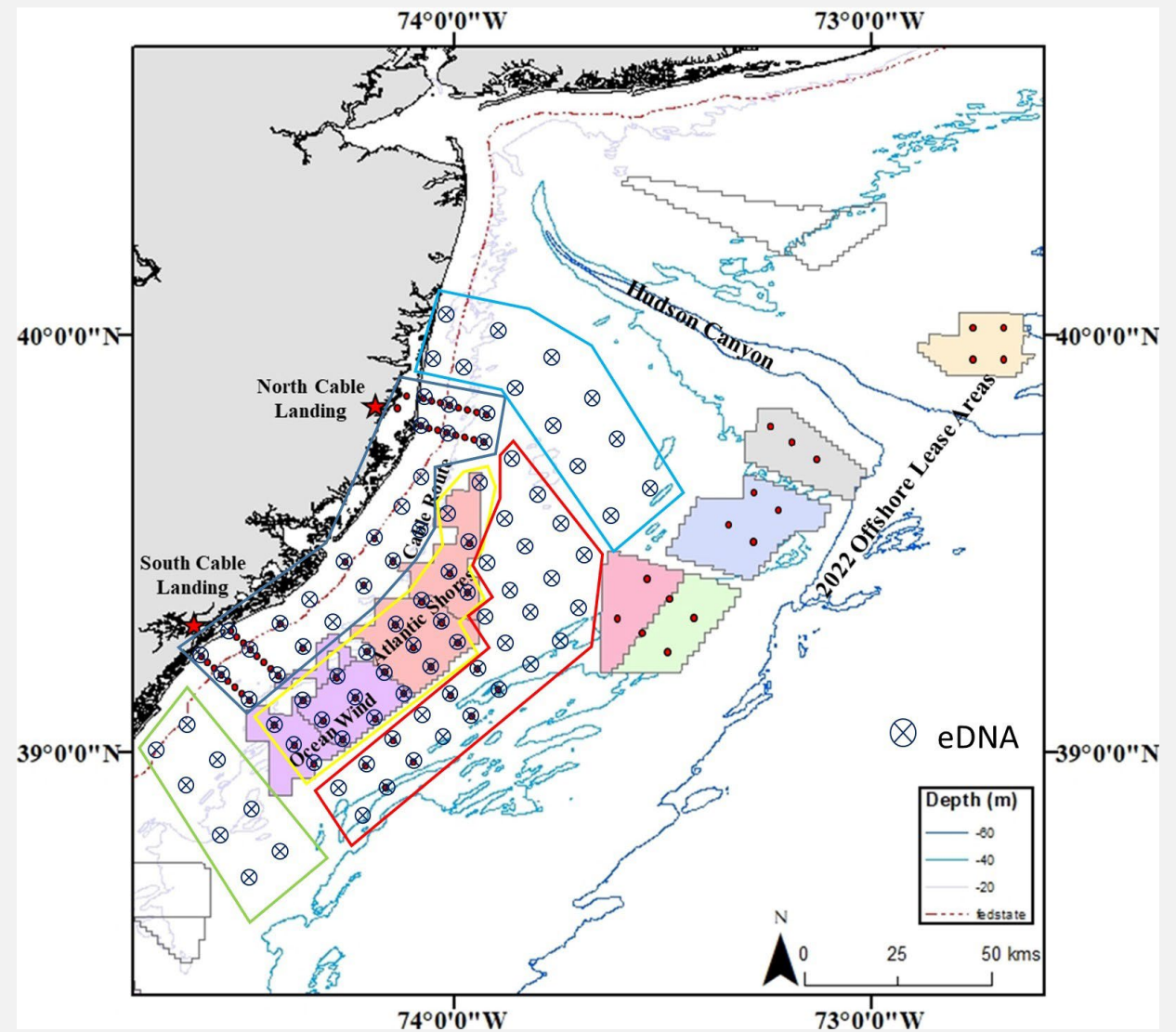
# Harbor seal tagging & health assessment

Stockton University



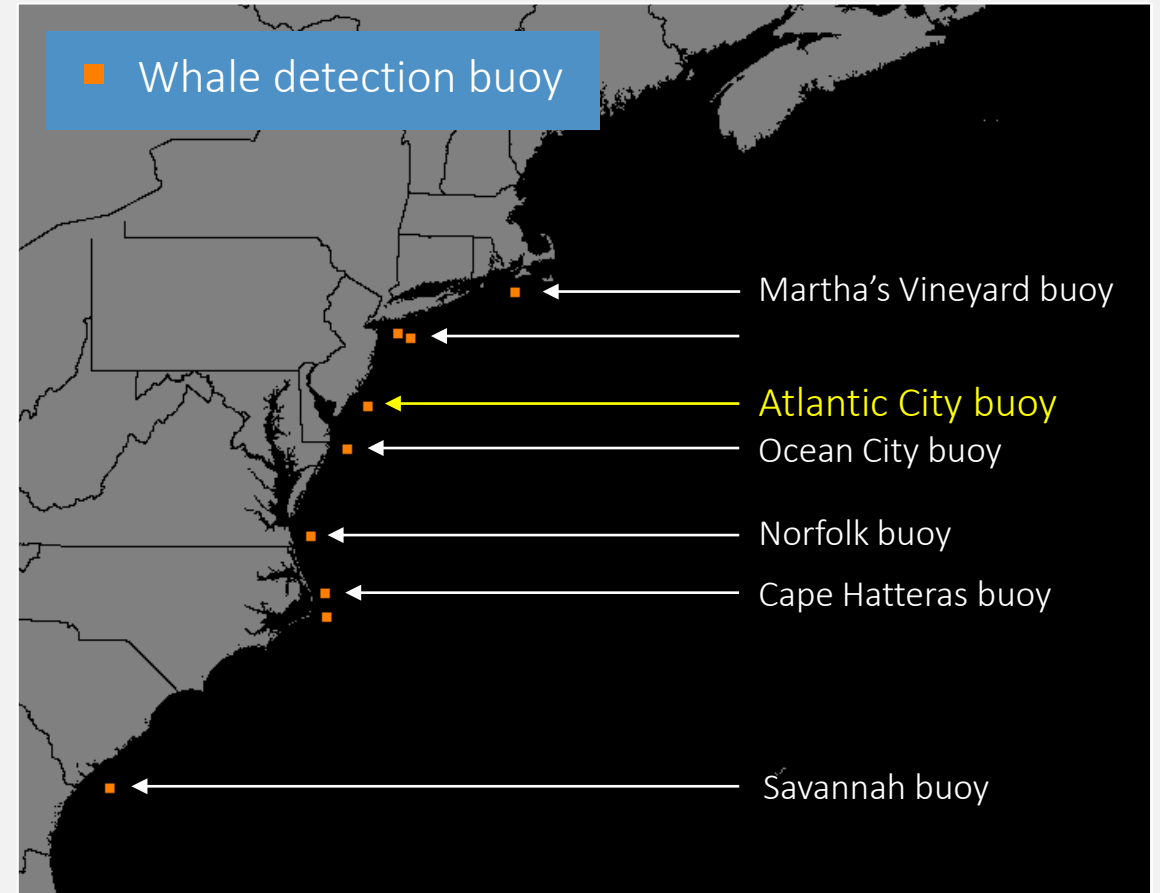
# Environmental DNA

Monmouth University



# Near real-time PAM

Woods Hole Oceanographic Institution



# Observing Guidance

Rutgers University

- **Task 1** - Provide recommended language on monitoring requirements/guidance to be included in the third NJ OREC solicitation (***Completed***)
- **Task 2** - Develop a Conceptual Plan for individual wind energy area contribution to a Regionally-Based Environmental and Ecological Monitoring System (***Will begin summer 2023***)

