

# QUEENSBORO RENEWABLE EXPRESS SITE PLANS FOR SAMPLING

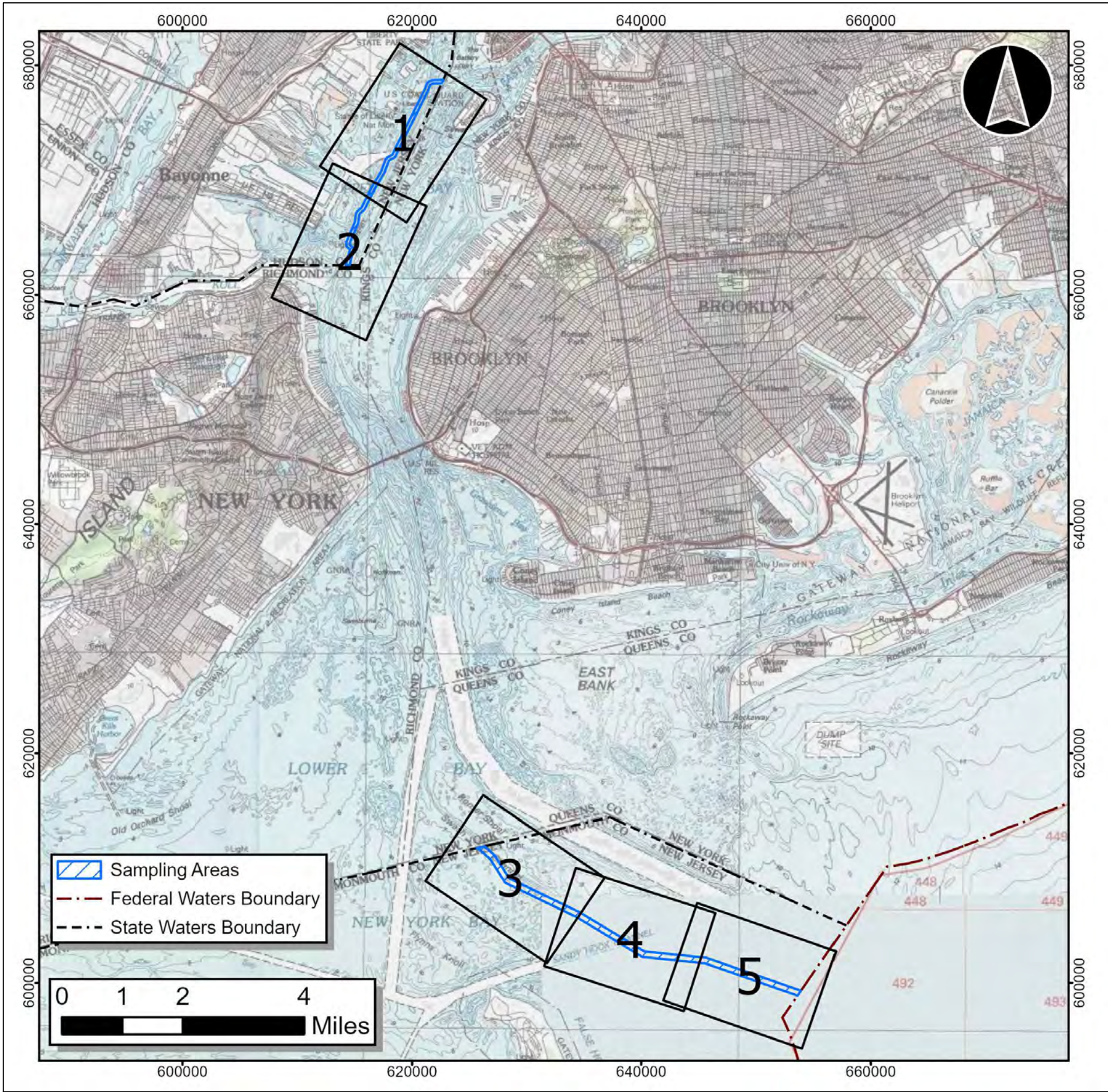
PREPARED FOR:  
**NEW JERSEY DEPARTMENT OF ENVIRONMENTAL PROTECTION**  
ON BEHALF OF: QUEENSBORO DEVELOPMENT, LLC.

DATE: OCTOBER 2023

IMPACTS TABLE

ESTIMATED MAXIMUM DISTURBANCE AREAS			
UPPER NEW YORK BAY SAMPLING AREA			
SAMPLE TYPE	QTY	SQ FT	ACRES
BENTHIC GRAB	0	0	0
VIBRACORE	4	216	0.005
SUBTOTAL	-	216	0.005
LOWER NEW YORK BAY/ATLANTIC OCEAN SAMPLING AREA			
SAMPLE TYPE	QTY	SQ FT	ACRES
BENTHIC GRAB	10	80	0.002
VIBRACORE	15	810	0.019
SUBTOTAL	-	890	0.020
NOTE: SEE ATTACHED REPORTS FOR ASSUMPTIONS AND IMPACT CALCULATION DETAIL			

LOCATION / SHEET INDEX MAP



NOTES

DOCUMENT USE:

- THESE PLANS WERE CREATED TO SUPPORT PREPARATION OF THE QUEENSBORO RENEWABLE EXPRESS MARINE SAMPLING PROJECT DOCUMENTS.
- THESE PLANS AND CORRESPONDING DESIGN DOCUMENTS ARE INSTRUMENTS OF PROFESSIONAL SERVICES PREPARED BY TRC ENGINEERS, INC. (NJ) (TRC), AND SHALL NOT BE USED, IN WHOLE OR IN PART, FOR ANY PURPOSE OTHER THAN FOR WHICH THEY WERE CREATED WITHOUT THE EXPRESSED WRITTEN CONSENT OF TRC. ANY UNAUTHORIZED USE, REUSE, MODIFICATION, OR ALTERATION, INCLUDING AUTOMATED CONVERSION OF THIS DOCUMENT, SHALL BE AT THE USER'S SOLE RISK WITHOUT LIABILITY OR LEGAL EXPOSURE TO TRC.
- SYMBOLS AND LEGENDS OF PROJECT FEATURES ARE GRAPHIC REPRESENTATIONS AND ARE NOT NECESSARILY SCALED TO THEIR ACTUAL DIMENSIONS OR LOCATIONS ON THE DRAWINGS.
- ENGINEER'S CERTIFICATION IS FOR NEW JERSEY DEPARTMENT OF ENVIRONMENTAL PROTECTION (NJDEP) PERMITTING PURPOSES ONLY. THESE CERTIFIED PLANS SHALL NOT BE USED FOR ANY OTHER PERMITS THAT MAY BE REQUIRED FOR THIS PROJECT.

SAMPLING NOTES:

- SAMPLING WILL BE CONDUCTED ONLY IN SAMPLING AREAS INDICATED IN THESE PLANS. NO SAMPLES WILL BE COLLECTED IN MARKED "EXCLUSION AREAS," WHICH INCLUDE FEDERALLY MAINTAINED CHANNELS (OR SIDE SLOPES THEREOF), CHARTED CABLE AND PIPELINE AREAS, AND AREAS KNOWN TO CONTAIN SUBMERGED INFRASTRUCTURE ASSETS.
- ALL AREAS TO BE SAMPLED WILL BE SURVEYED AS DESCRIBED IN THE PROJECT DOCUMENTS AND CLEARED BY A QUALIFIED MARINE ARCHAEOLOGIST AND USING THE NEW JERSEY ONE CALL SERVICE PRIOR TO SAMPLE COLLECTION.

PREPARED BY:

**TRC Engineers Inc.**  
Certificate of Authorization #24GA28047100  
**TRC ENGINEERS INC.**  
**41 SPRING STREET, SUITE 102**  
**NEW PROVIDENCE, NEW JERSEY**

SHARON L. BURKE, P.E.  
NJ PROFESSIONAL ENGINEER  
LIC. NO. NJ24GE04178300

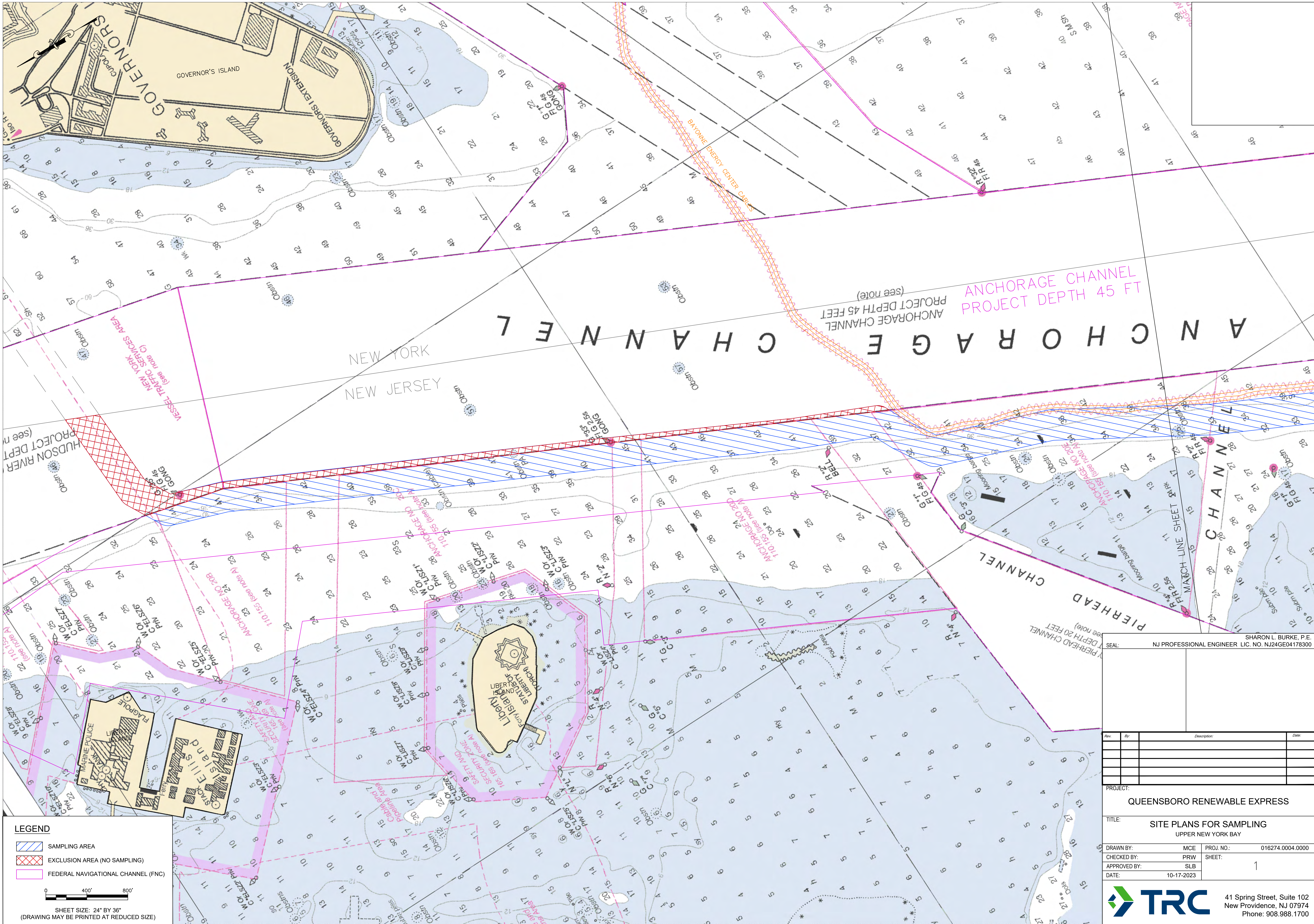
REV.	BY	DATE	PURPOSE OF ISSUE	CHK'D	APP'D

COORDINATE SYSTEM:

COORDINATE SYSTEM: NAD83 NEW JERSEY STATE PLANES  
UNIT: US FOOT  
PROJECTION: TRANSVERSE MERCATOR  
DATUM: NAD 1983 2011  
FALSE EASTING: 492125  
FALSE NORTHING: 0  
CENTRAL MERIDIAN: -74.5  
SCALE FACTOR: 0.9999  
LATITUDE OF ORIGIN: 38.8333  
VERTICAL REFERENCE: CHARTED DEPTHS IN US FEET MLLW.

THESE PLANS ARE ACCOMPANIED BY REPORTS. THESE DOCUMENTS ARE INTERRELATED AND ARE INTENDED TO BE USED TOGETHER. THESE DOCUMENTS ARE INTENDED TO BE USED FOR REGULATORY PURPOSES ONLY.  
NOT FOR CONSTRUCTION





DRAWING NAME: C:\Users\jburke\OneDrive\Documents\Queensboro Renewable Express\Site Plans\Site Plans.dwg - PLOT DATE: October 17, 2023, 3:30PM - LAYOUT: Sheet 1

**LEGEND**

- SAMPLING AREA
- EXCLUSION AREA (NO SAMPLING)
- FEDERAL NAVIGATIONAL CHANNEL (FNC)

0 400' 800'

SHEET SIZE: 24" BY 36"  
(DRAWING MAY BE PRINTED AT REDUCED SIZE)

SHARON L. BURKE, P.E.  
NJ PROFESSIONAL ENGINEER, LIC. NO. NJ24GE04178300

Rev	By	Description	Date

PROJECT: QUEENSBORO RENEWABLE EXPRESS

TITLE: SITE PLANS FOR SAMPLING  
UPPER NEW YORK BAY

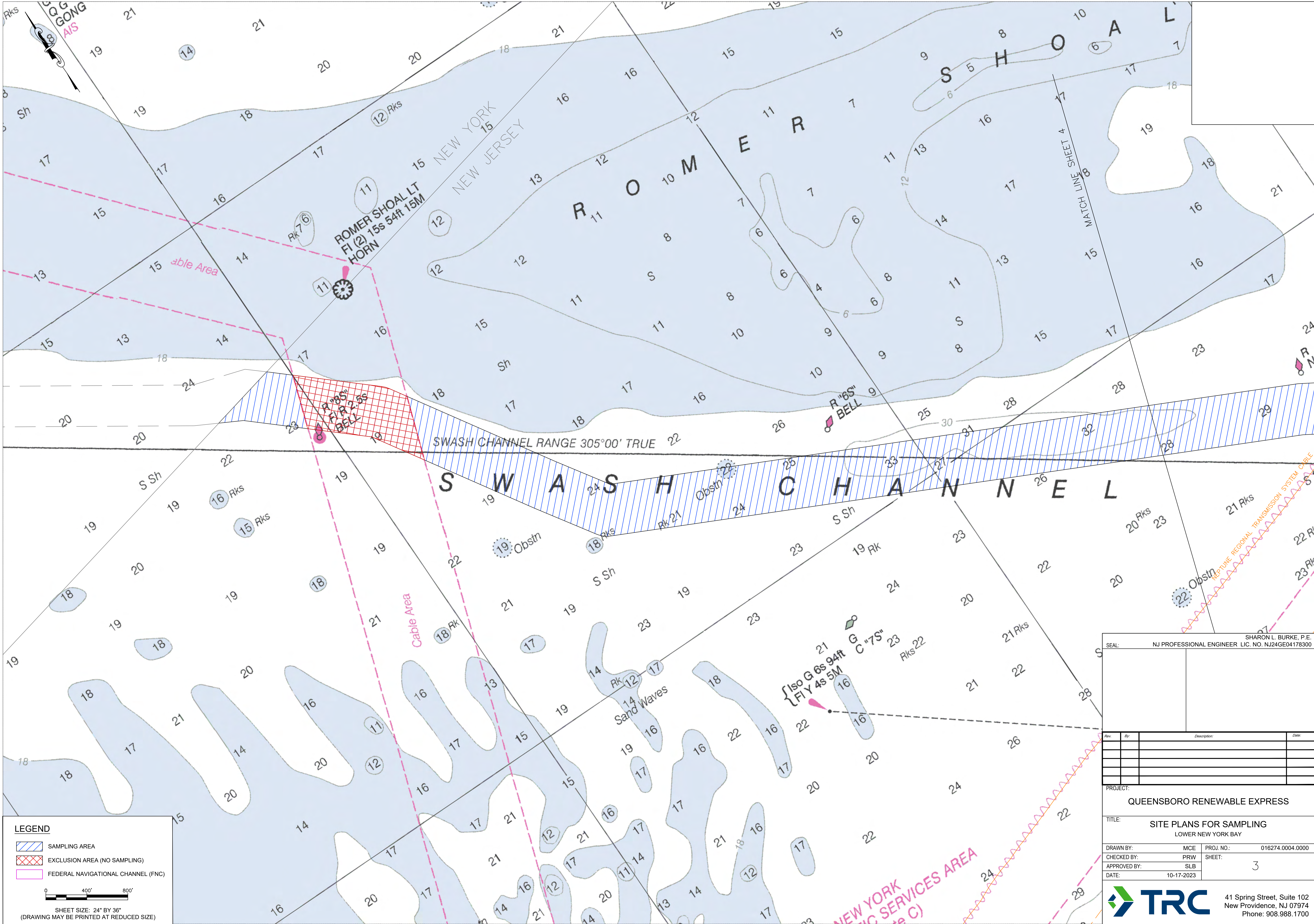
DRAWN BY: MCE	PROJ. NO.: 016274.0004.0000
CHECKED BY: PRW	SHEET: 1
APPROVED BY: SLB	
DATE: 10-17-2023	

41 Spring Street, Suite 102  
New Providence, NJ 07974  
Phone: 908.988.1700










SHARON L. BURKE, P.E.  
NJ PROFESSIONAL ENGINEER, LIC. NO. NJ24GE04178300

Rev	By	Description	Date

PROJECT:  
QUEENSBORO RENEWABLE EXPRESS

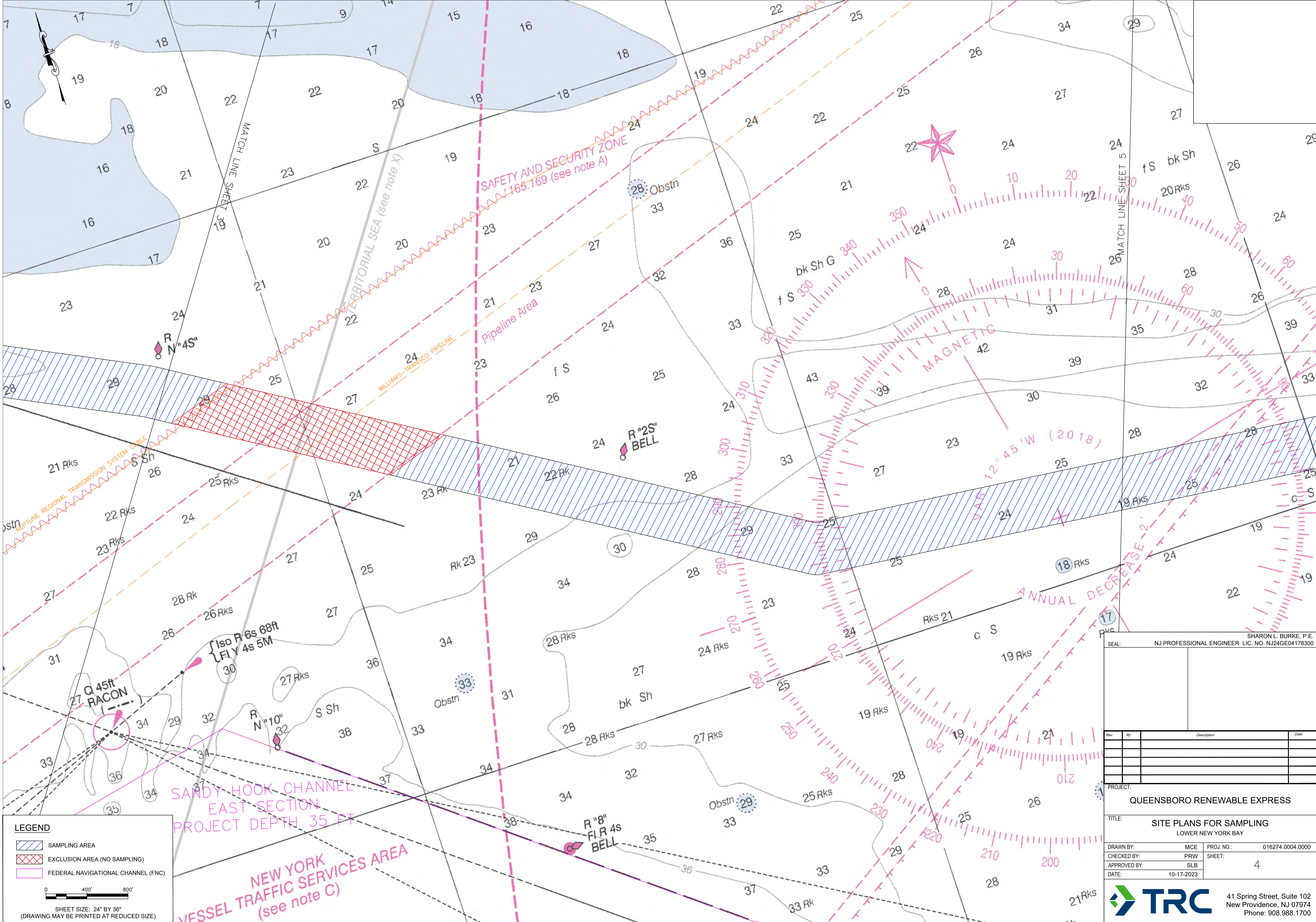
TITLE:  
SITE PLANS FOR SAMPLING  
LOWER NEW YORK BAY

DRAWN BY:	MCE	PROJ. NO.:	016274.0004.0000
CHECKED BY:	PRW	SHEET:	3
APPROVED BY:	SLB		
DATE:	10-17-2023		



41 Spring Street, Suite 102  
New Providence, NJ 07974  
Phone: 908.988.1700





DRAWING MADE BY: SHARON L. BURKE, P.E. DATE: 10-17-2023. SHEET: 4 OF 4. PROJECT: QUEENSBORO RENEWABLE EXPRESS. TITLE: SITE PLANS FOR SAMPLING. LOWER NEW YORK BAY. SCALE: 1" = 400'. SHEET SIZE: 24" BY 36". (DRAWING MAY BE PRINTED AT REDUCED SIZE)

**LEGEND**

- SAMPLING AREA
- EXCLUSION AREA (NO SAMPLING)
- FEDERAL NAVIGATIONAL CHANNEL (FNC)

0 400' 800'

SHEET SIZE: 24" BY 36"  
(DRAWING MAY BE PRINTED AT REDUCED SIZE)

SHARON L. BURKE, P.E.  
NJ PROFESSIONAL ENGINEER LIC. NO. NJ24GE04178300

Rev	By	Description	Date

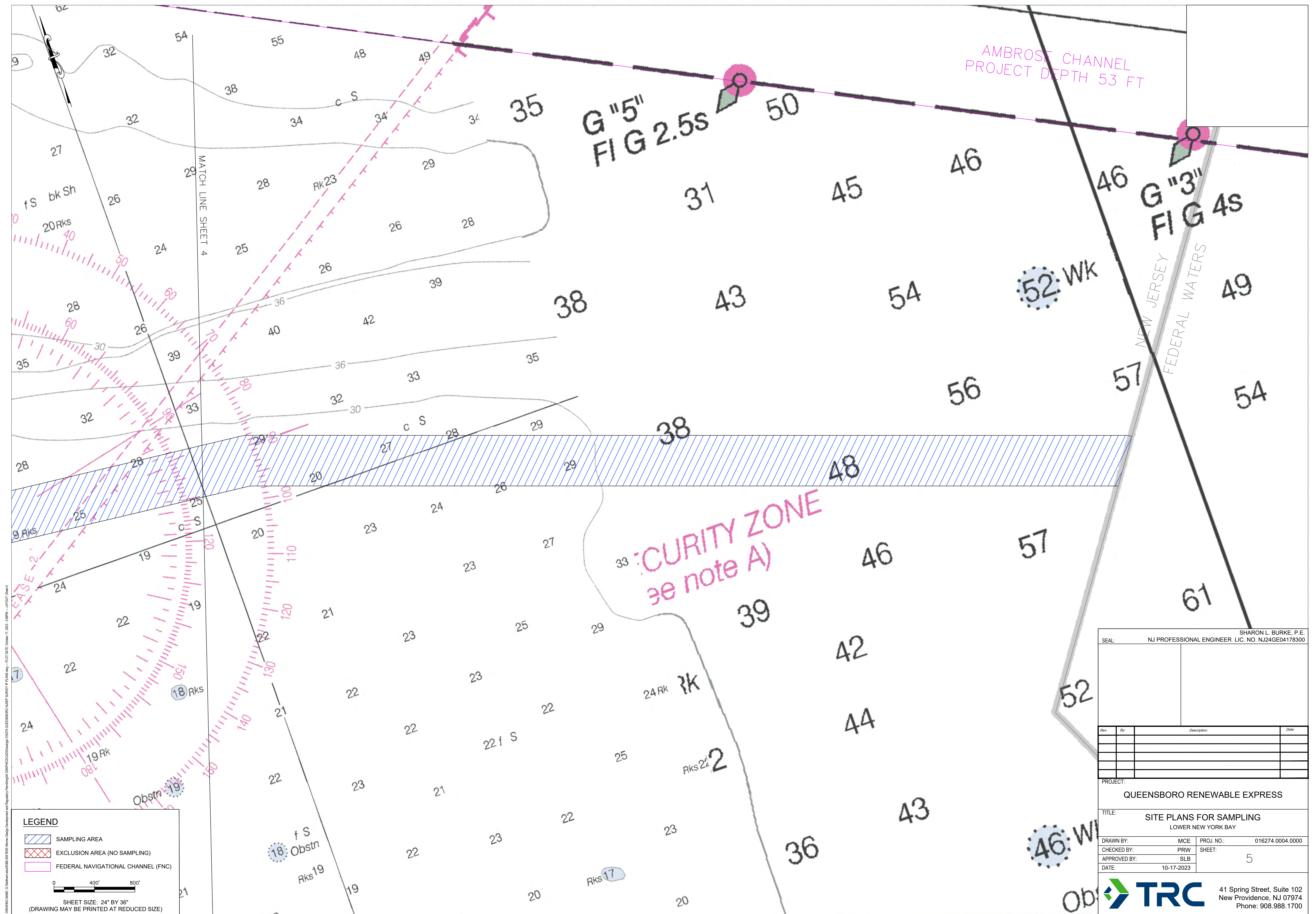
PROJECT: QUEENSBORO RENEWABLE EXPRESS

TITLE: SITE PLANS FOR SAMPLING  
LOWER NEW YORK BAY

DRAWN BY: MCE	PROJ. NO.: 016274.0004.0000
CHECKED BY: PRW	SHEET: 4
APPROVED BY: SLB	
DATE: 10-17-2023	

41 Spring Street, Suite 102  
New Providence, NJ 07974  
Phone: 908.988.1700





DRAWING NAME: G:\Waltham\Jobs\R-565-005 RISE-Walmer-Design Development and Regulatory Permitting\04 GRAPHICS\CAD\Drawings\ 016274 QUEENSBORO NJ\DEP SURVEY IP PLANS.dwg -- PLOT DATE: October 17, 2023 - 3:58PM -- LAYOUT: Sheet 5