

What is community adaptive capacity?

Developed by Enterprise Community Partners, Inc. as part of the Resilient NJ program for the New Jersey Department of Environmental Protection. This work was funded by U.S. Department of Housing and Urban Development through an award from the National Disaster Resilience Competition.



WHAT IS ADAPTIVE CAPACITY?

**Climate Change Mitigation +
Adaption +
Deep Democracy +
Equity+**

Resilience

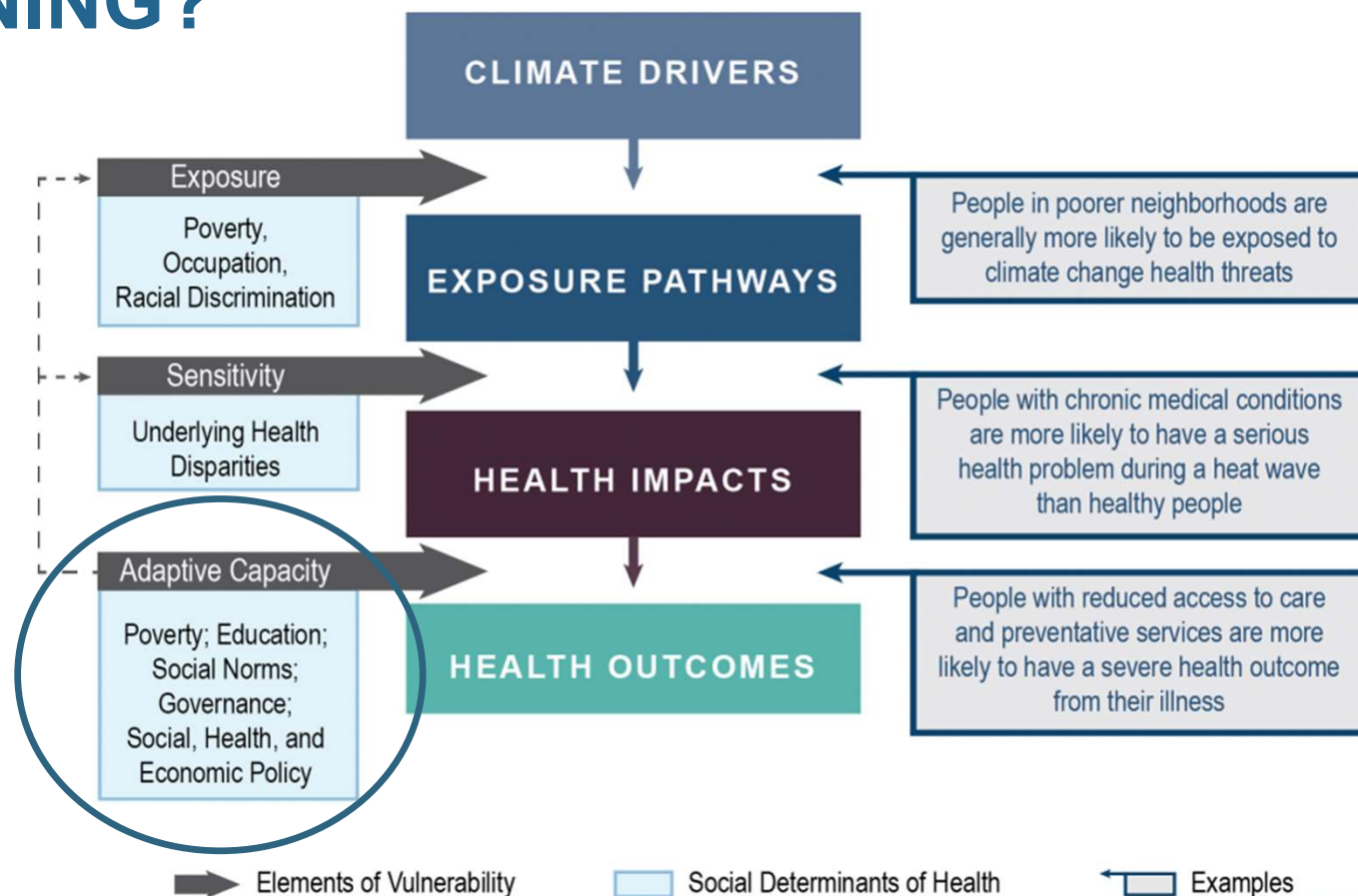


Our Communities, Our Power: Advancing Resistance and Resilience in Climate Change Adaptation.” NAACP. Page 18.

RESILIENT 



WHY DOES IT MATTER TO RESILIENCE PLANNING?



<https://health2016.globalchange.gov/populations-concern>

RESILIENT NJ



Adaptive Capacity in Resilience Strategies



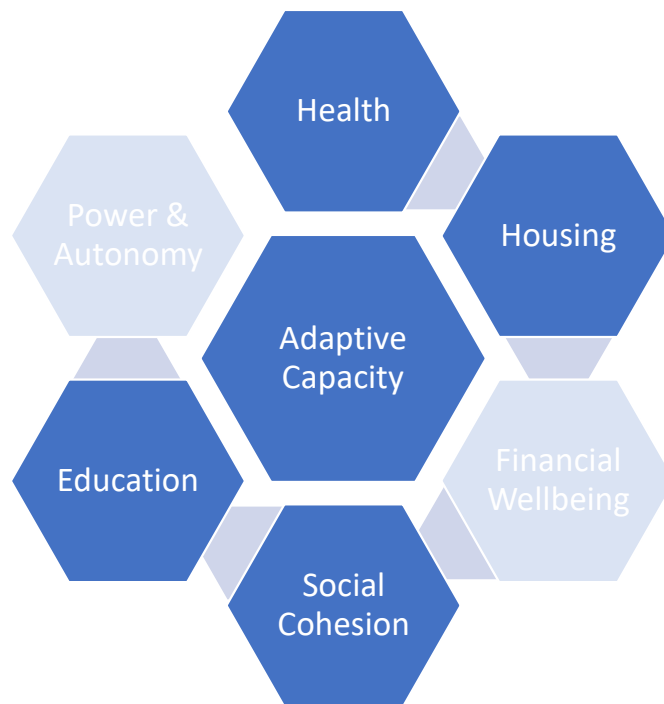
ADAPTIVE CAPACITY STRATEGY EXAMPLES

- **Resilience Hubs**
- **Community-led Resilience Planning**
- **Increase Financial Sustainability**
- **Disaster Collectivism**
- **Community Stewardship of Greenspace**



Adaptive Capacity Factors

Resilience Hubs



RESILIENT NJ



RESILIENCE HUBS use a physical space - a building and its surrounding infrastructure - to meet numerous goals, both physical and social. Resilience hubs are an opportunity to efficiently improve emergency management, reduce climate pollution and enhance community resilience. These spaces also provide opportunities for communities to become more self-determining, socially connected, and successful in the long-term. This document outlines initial thinking about essential elements of a Resilience Hub and how to begin planning for Hub development.



Resilient Programming and Services

Offering additional services and programs that build relationships, promote community preparedness, and improve residents' health and well-being.



Resilient Structure

Strengthening the resilience of the facility to ensure that it meets operational goals in all conditions.



Resilient Power

Ensuring reliable backup power to the facility during a hazard while also improving the cost-effectiveness and sustainability of operations in all three operating modes.



Resilient Communications

Ensuring the ability to communicate within and outside the service area during disruptions and throughout recovery.



Resilient Operations

Ensuring personnel and processes are in place to operate the facility in all conditions.

Urban Sustainability Directors Network's Resilience Hub

RESILIENT NJ



Adaptive Capacity in Resilience Strategies

Community-led Resilience Planning



RESILIENT NJ



EMPOWERED COMMUNITIES PROGRAM

- Invest heavily in the leadership capacities of local residents to:
 - Drive rapid, substantive action
 - Focus on inclusiveness
 - Embrace self-reliance
 - Pursue and interface successfully with outside sources of help (government, foundations, universities, corporations, nonprofits)
 - Evolve and adapt as challenges arise by developing new skills and capacities



RESILIENT NJ



ECP: WHAT DOES IT LOOK LIKE?



RESILIENT NJ



ECP:
NEIGHBORHOOD
EMPOWERMENT
NETWORK
PROGRAMS



The Hub



Block
Champion



Strong Congregation
Program



Neighborfest



Leadership
Academies



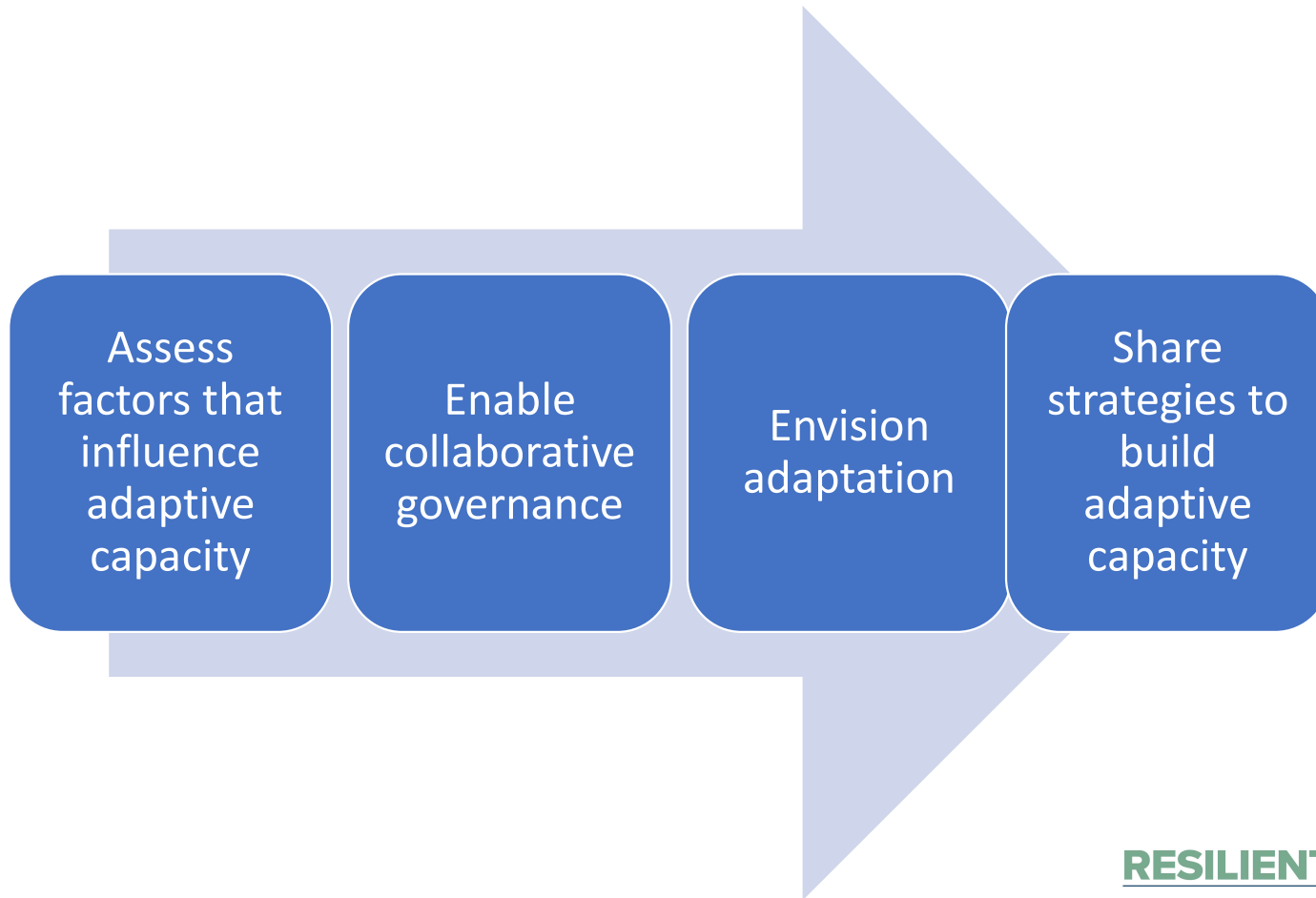
NEN Training
Center

RESILIENT NJ



How can we integrate adaptive capacity into resilience planning?

Adaptive Capacity in Resilience Planning

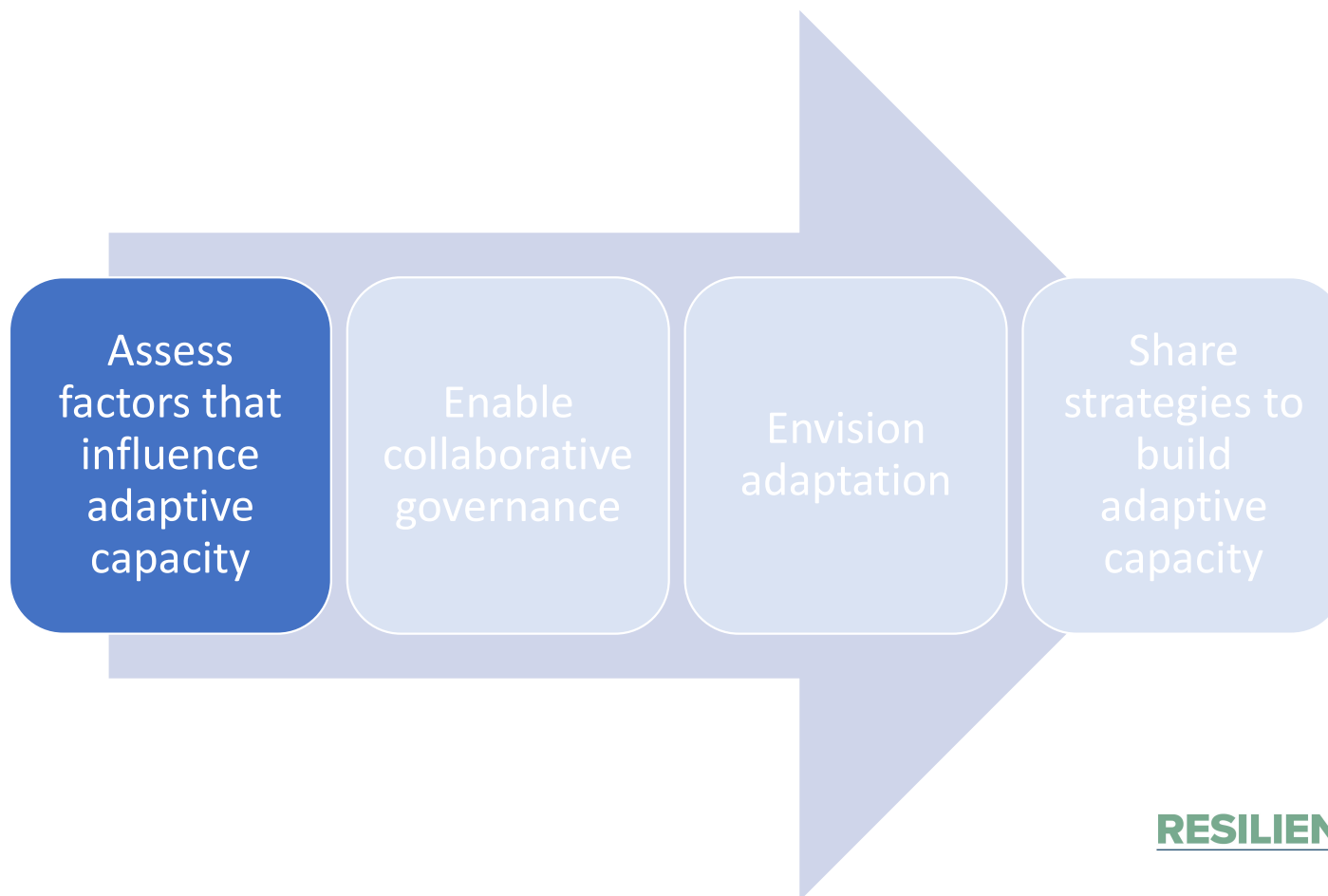


RESILIENT NJ



Adaptive Capacity in Resilience Planning

Assessment



RESILIENT NJ



Adaptive Capacity in Resilience Planning

Factors that influence adaptive capacity



What other factors have you found influence a person or community's adaptive capacity?

Adaptive Capacity in Resilience Planning

Assessing factors that influence adaptive capacity

Housing

- Cost Burden
- Overcrowding
- Housing Tenure (renter v owner)
- Housing quality
- Availability and access to flood insurance assistance

Health

- Insurance coverage
- Disability
- Access to health services

Financial Wellbeing

- Poverty rate
- Unemployment rate
- Income
- Households with zero no liquid assets

Power & Autonomy

- Political participation
- Representation among local officials

Education

- Early childhood education enrollment
- Primary and secondary education outcomes
- Highschool graduation rate

Social Cohesion

- Healthy relationships across divisions
- Interdependence

See NAACP's "Equity in Building Resilience in Adaptation Planning" and Catholic Relief Services "Social Indicators Bank" for additional and more detailed indicators

RESILIENT NJ



Adaptive Capacity in Resilience Planning

Assessing factors that influence adaptive capacity

Have you assessed these types of factors recently? If so, what have the findings taught you about adaptive capacity in your community?

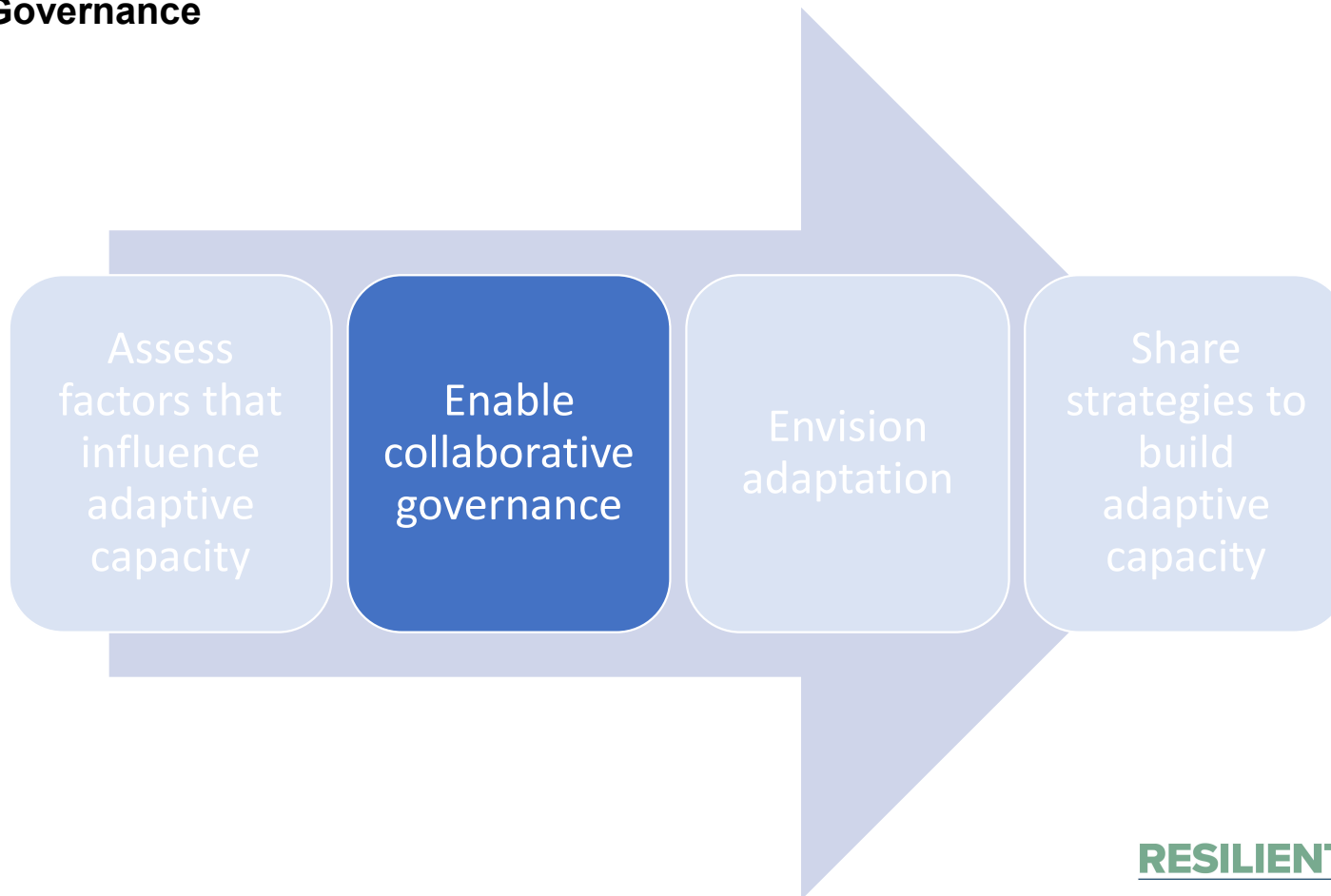
How do you think these factors may influence your region's resilience and resilience plan? How might these (or how have these) inform(ed) your risk assessment or asset identification?

RESILIENT NJ



Adaptive Capacity in Resilience Planning

Collaborative Governance



RESILIENT NJ



Adaptive Capacity in Resilience Planning

Enabling collaborative governance and decision-making



Photo taken from *The People's Plan*. A project of Permaculture and Social Equity Team, Shore Up Marin and Resilient by Design Bay Area Challenge

<http://www.rebuildbydesign.org/our-work/bay-area-challenge/the-peoples-plan>

RESILIENT NJ

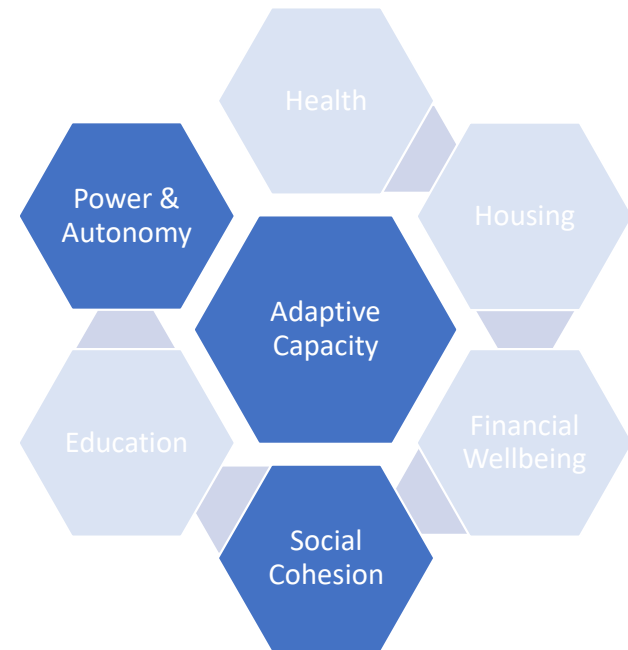


Adaptive Capacity in Resilience Planning

Enabling collaborative governance and decision-making

Collaborative Governance

Is the co-definition of problems and the co-development of solutions among multiple sectors. Solutions benefit from a shared analysis of root causes and from increased capacity for implementation that can be grounded in community strengths and assets.



Citation: *From Community Engagement to Ownership Tools for the Field with Case Studies of Four Municipal Community-Driven Environmental & Racial Equity Committees*. An Urban Sustainability Directors Network Innovation Fund Project conducted by Facilitating Power, Movement Strategy Center, and the National Association of Climate Resilience Planners

RESILIENT NJ



Adaptive Capacity in Resilience Planning

Enabling collaborative governance and decision-making

Stance towards community	0 IGNORE	1 INFORM	2 CONSULT	3 INVOLVE	4 COLLABORATE	5 DEFER TO
Impact	<i>Marginalization</i>	<i>Placation</i>	<i>Tokenization</i>	<i>Voice</i>	<i>Delegated Power</i>	<i>Community Ownership</i>
Community Engagement Goals	Deny access to decision-making processes	Provide the community with relevant information	Gather input from the community	Ensure community needs and assets are integrated into process and inform planning	Ensure community capacity to play a leadership role in implementation of decisions	Foster democratic participation and equity by placing full decision-making in the hands of the community; bridge divide between community and governance
Message to Community	<i>"Your voice, needs, and interests do not matter"</i>	<i>"We will keep you informed"</i>	<i>"We care what you think"</i>	<i>"You are making us think (and therefore act) differently about the issue"</i>	<i>"Your leadership and expertise are critical to how we address the issue"</i>	<i>"It's time to unlock collective power and capacity for transformative solutions"</i>
Activities	Closed-Door Meetings Misinformation Systematic Disenfranchisement Voter Suppression	Fact Sheets Open Houses Presentations Billboards Videos	Public Comment Focus Groups Community Forums Surveys	Community Organizing & Advocacy House Meetings Interactive Workshops Polling Community Forums	MOUs with Community-Based Organizations Community Organizing Citizen Advisory Committees Open Planning Forums with Citizen Polling	Community-Driven Planning Consensus Building Participatory Action Research Participatory Budgeting Cooperatives

Citation: *From Community Engagement to Ownership Tools for the Field with Case Studies of Four Municipal Community-Driven Environmental & Racial Equity Committees*. An Urban Sustainability Directors Network Innovation Fund Project conducted by Facilitating Power, Movement Strategy Center, and the National Association of Climate Resilience Planners

RESILIENT NJ



Adaptive Capacity in Resilience Planning

Enabling collaborative governance and decision-making

Where on this scale would you like the planning process to be?

- 0-Ignore
- 1-Inform
- 2-Consult
- 3-Involve
- 4-Collaborate
- 5-Defer
- I don't know

Stance towards community	0 IGNORE	1 INFORM	2 CONSULT	3 INVOLVE	4 COLLABORATE	5 DEFER TO
Impact	<i>Marginalization</i>	<i>Placation</i>	<i>Tokenization</i>	<i>Voice</i>	<i>Delegated Power</i>	<i>Community Ownership</i>
Community Engagement Goals	Deny access to decision-making processes	Provide the community with relevant information	Gather input from the community	Ensure community needs and assets are integrated into process and inform planning	Ensure community capacity to play a leadership role in implementation of decisions	Foster democratic participation and equity by placing full decision-making in the hands of the community; bridge divide between community and governance
Message to Community	<i>"Your voice, needs, and interests do not matter"</i>	<i>"We will keep you informed"</i>	<i>"We care what you think"</i>	<i>"You are making us think (and therefore act) differently about the issue"</i>	<i>"Your leadership and expertise are critical to how we address the issue"</i>	<i>"It's time to unlock collective power and capacity for transformative solutions"</i>
Activities	Closed-Door Meetings Misinformation Systematic Disenfranchisement Voter Suppression	Fact Sheets Open Houses Presentations Billboards Videos	Public Comment Focus Groups Community Forums Surveys	Community Organizing & Advocacy House Meetings Interactive Workshops Polling Community Forums	MOUs with Community-Based Organizations Community Organizing Citizen Advisory Committees Open Planning Forums with Citizen Polling	Community-Driven Planning Consensus Building Participatory Action Research Participatory Budgeting Cooperatives

RESILIENT NJ



Adaptive Capacity in Resilience Planning

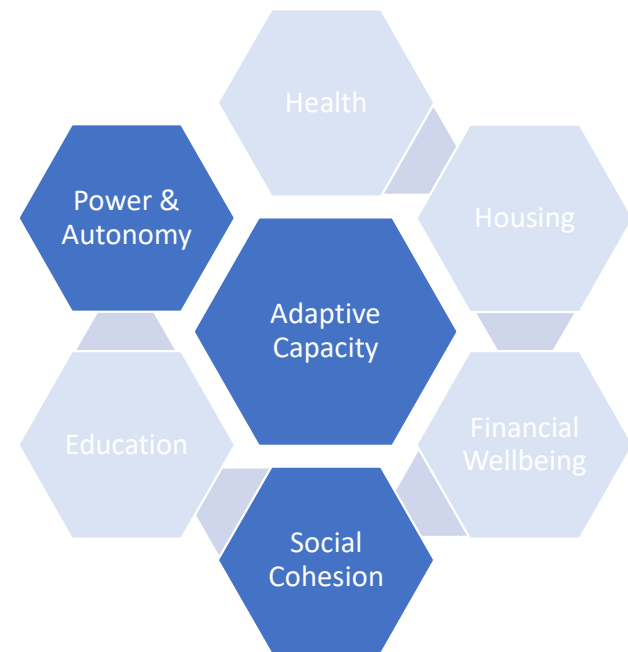
Enabling collaborative governance and decision-making

Collaborative Governance

Is the co-definition of problems and the co-development of solutions among multiple sectors. Solutions benefit from a shared analysis of root causes and from increased capacity for implementation that can be grounded in community strengths and assets.

Questions for Consideration

- How are you already enabling collaborative governance in your resilience planning?
- What are the internal barriers and openings for deepening collaborative governance in resilience planning?



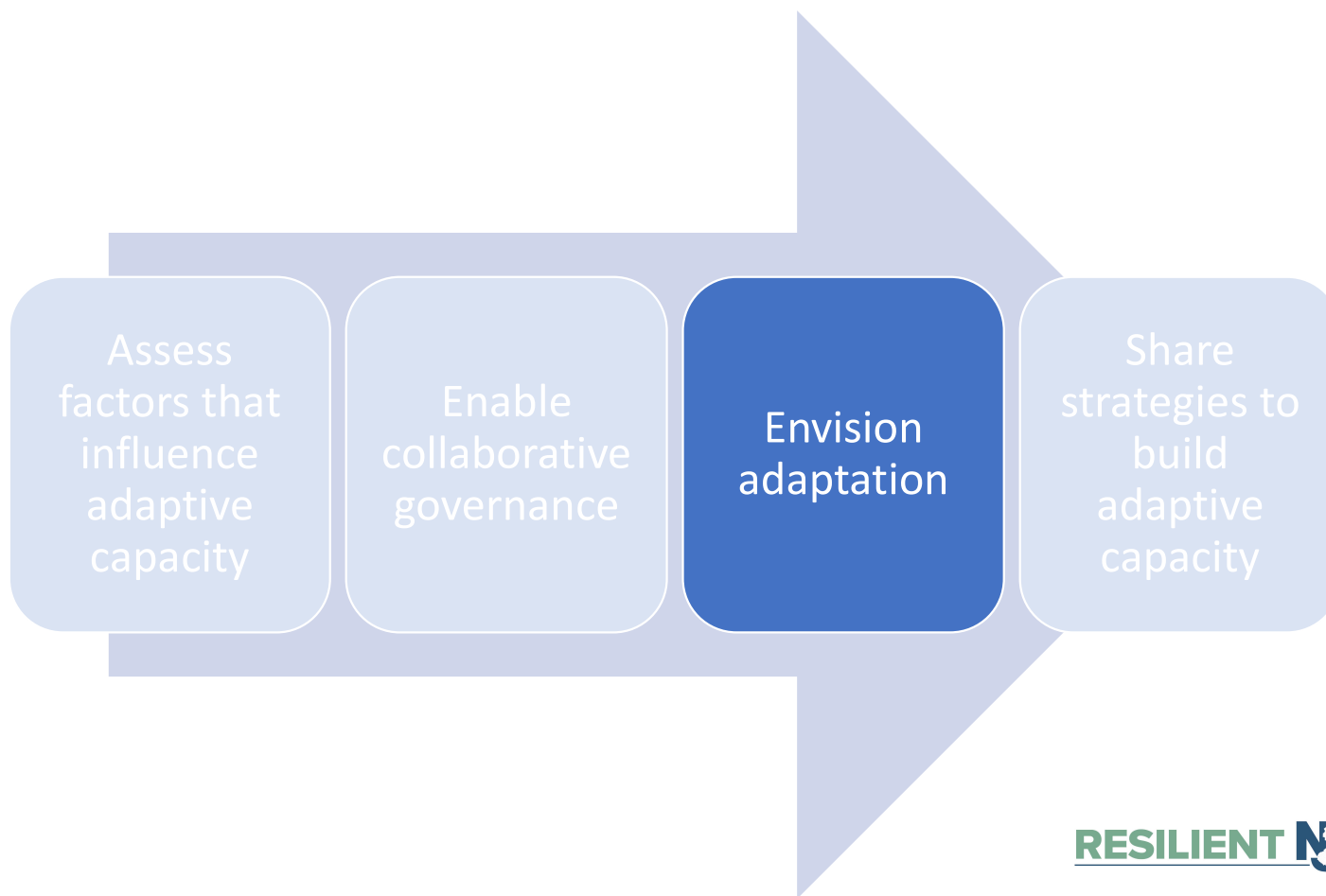
Citation: *From Community Engagement to Ownership Tools for the Field with Case Studies of Four Municipal Community-Driven Environmental & Racial Equity Committees*. An Urban Sustainability Directors Network Innovation Fund Project conducted by Facilitating Power, Movement Strategy Center, and the National Association of Climate Resilience Planners

RESILIENT NJ



Adaptive Capacity in Resilience Planning

Vision



Adaptive Capacity in Resilience Planning

Planning Context and Vision



Adaptive Capacity in Resilience Planning

Planning Context and Vision



Before envisioning the future, acknowledge the past and present marginalization that has led to inequitable vulnerabilities and capacity to adapt. How is this currently being acknowledged in the planning process?

What is your region's vision for adaptation? How does this relate to the other components of resilience, e.g. climate mitigation, deep democracy, and equity?

Adaptive capacity is the ability of communities, institutions, or people to adjust to potential hazards, to take advantage of opportunities, or to respond to consequences.

**Climate Change Mitigation +
Adaption +
Deep Democracy +
Equity+

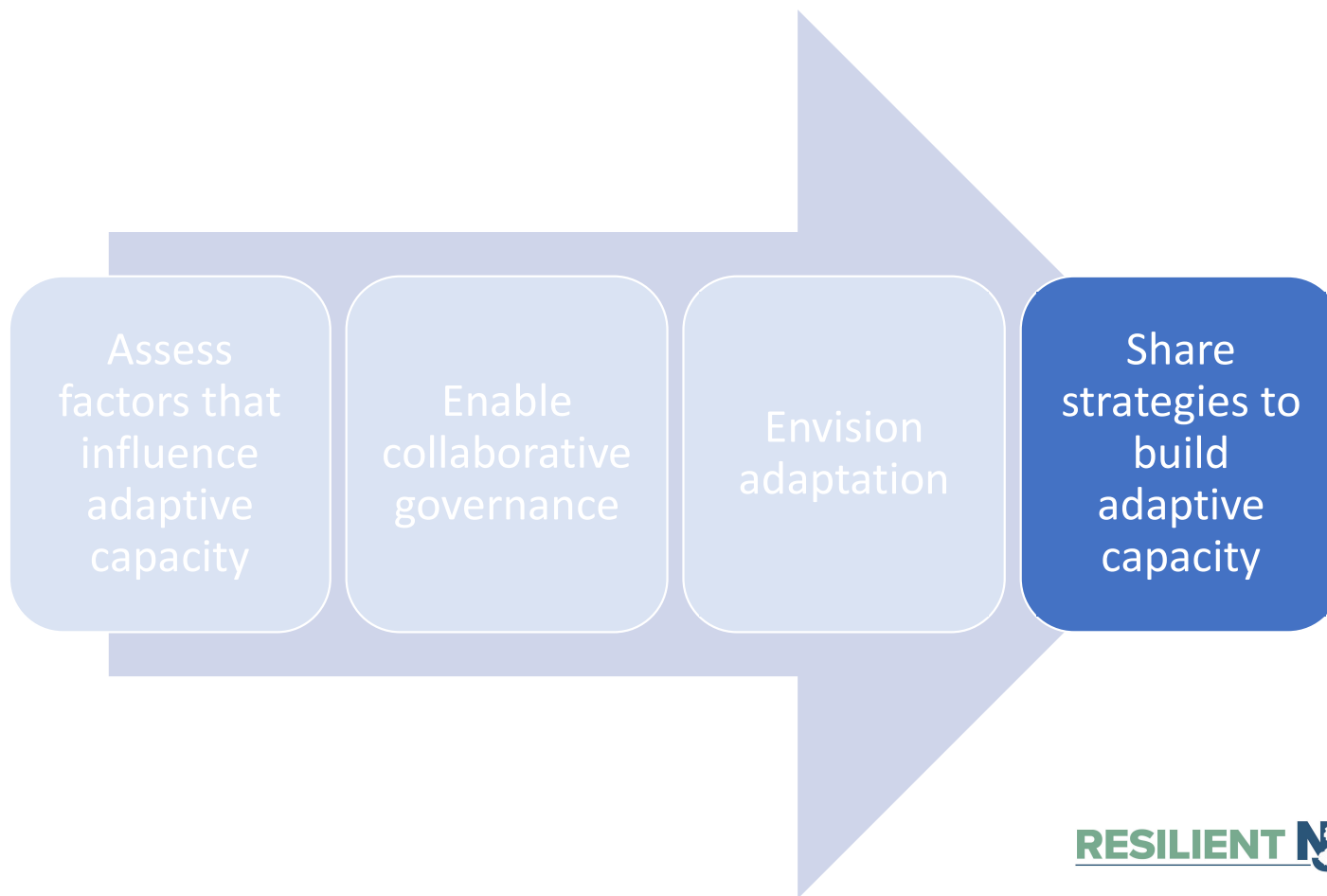
= Resilience**

RESILIENT NJ



Adaptive Capacity in Resilience Planning

Strategies

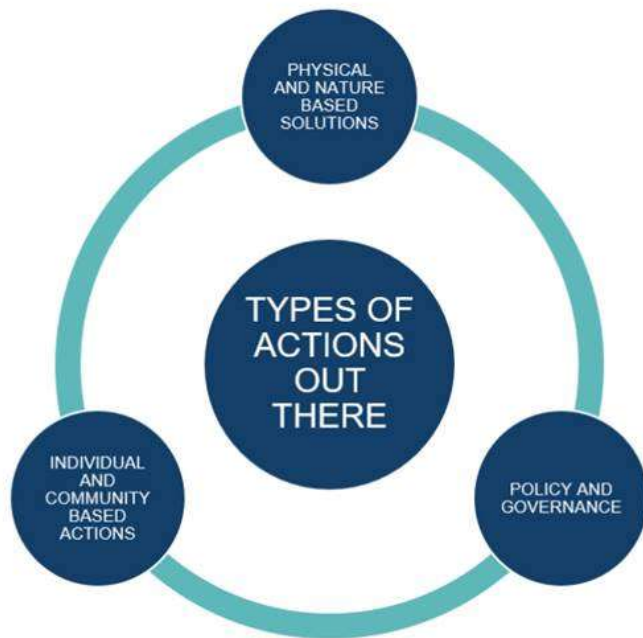


RESILIENT NJ



Adaptive Capacity in Resilience Planning

Strategies



Flood Resilience Toolkit Goals

- Foster collaboration internally within the consultant team, and within the Region Team
- Communicate to external stakeholders and community members about the types and range of solutions possible, as well as when they might be appropriate and their limitations
- *Provide a framing tool for both the technical team and stakeholders, to help us begin from similar places of understanding, about the technical considerations that often guide these types of decisions*

Adaptive Capacity in Resilience Planning

Strategies

Strategies	Examples and Resources
Resilience Hubs	“Resilience Hubs: Shifting Power to Communities and Increasing Community Capacity.” https://www.usdn.org/resilience-hubs.html
	<i>Communities Together: A Guide for Resilient Community Center Design in Island Communities.</i> https://www.enterprisecommunity.org/sites/default/files/media-library/solutions-and-innovation/recovery-rebuilding/Resilient-Community-Hubs-Guide_ENGLISH.pdf
	Baja, Kristin. <i>Guide to Developing Resilience Hubs</i> . USDN. 2019. http://resilience-hub.org/wp-content/uploads/2019/10/USDN_ResilienceHubsGuidance-1.pdf
	<i>Equitable Adaptation Legal & Policy Toolkit</i> . “Supporting the Development of Resilience Hubs.” Georgetown Climate Center. https://www.georgetownclimate.org/adaptation/toolkits/equitable-adaptation-toolkit/supporting-the-development-of-resilience-hubs-a.html
Neighborhood/ Community-Led Resilience Planning	Empowered Communities Program https://www.empowersf.org/
	The People’s Plan http://www.rebuildbydesign.org/our-work/bay-area-challenge/the-peoples-plan
Disaster Collectivism aka Mutual Aid	Undocufund https://undocufund.org/
	Occupy Sandy
Community Stewardship of Green Space	Organización Boricúa de Agricultura Ecológica de Puerto Rico https://www.facebook.com/organizacionboricua/
	Building Bridges http://www.rebuildbydesign.org/our-work/all-proposals/winning-projects/big-u
Improve Financial Wellbeing	Workforce Development for Green Infrastructure and Water Management https://www.nola.gov/resilience-sustainability/gentilly-resilience-district/workforce-development/
	Community Benefit Agreement Union Square Neighborhood Council http://unionsquareneighborhoodcouncil.org/images/docs/190825-US2%20-%20Letter%20to%20USNC%20Negotiating%20Committee%20re%20CBA%20Term%20Sheet.pdf

RESILIENT NJ



Adaptive Capacity in Resilience Planning

Strategies



Capture stories and examples of existing local adaptive capacity strategies; map the place-based strategies:

- What adaptive capacity strategies are individuals and organizations already implementing in your community (neighborhood, municipality, region)?
- Where in the community are they happening?
- Who is leading and supporting this work?
- What are the goals of these strategies?
- What risks do they seek to address?
- What assets do they leverage?
- How can these strategies be sustained, duplicated, or scaled



Conduct collaborative risk and asset mapping, strategy development, and capacity building

See the *People's Plan** for an in-depth example of how to design and facilitate this process.

Share adaptive capacity examples gathered from across the country to generate ideas and discussion in the strategy development phase

*Visit here <http://www.rebuildbydesign.org/our-work/bay-area-challenge/the-peoples-plan> for more info

RESILIENT NJ



Adaptive Capacity in Resilience Planning

Strategies

Additional considerations for evaluating adaptive capacity strategies

- Does it positively impact any of the factors that influence adaptive capacity?
- Is the strategy owned by those who will be implementing it and who will be impacted by it?



RESILIENT NJ

