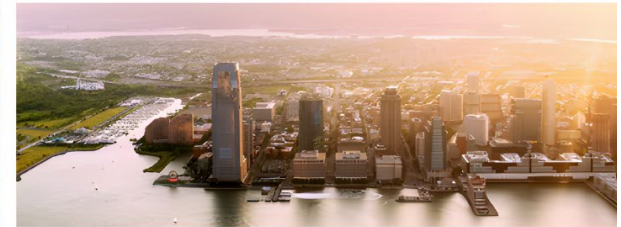


# Draft Extreme Heat Resilience Action Plan

Webinar | May 7, 2024

Presented by the NJ Interagency Council on Climate Resilience



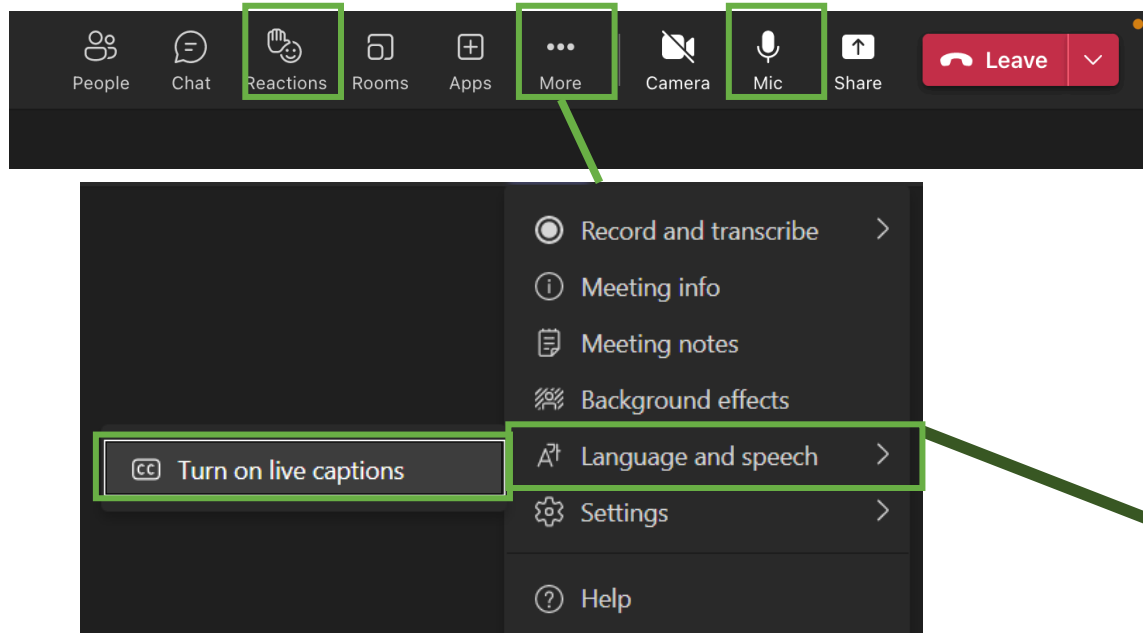
# Housekeeping

**This webinar is being recorded.** Your presence at this meeting indicates you agree to be recorded. Shortly after the conclusion of the webinar, the recording and slide deck will be posted at [nj.gov/dep/climatechange/resilience-action-plans.html](https://nj.gov/dep/climatechange/resilience-action-plans.html).

**All participants are muted during the presentation portion of the webinar.** We will un-mute participants at the end of the presentation to share comments.

**If you have a comment, you may:**

- Use the "raise your hand" function at the end of the webinar. We'll take all verbal comments at the end of the presentation.
- Use the online form at [nj.gov/dep/climatechange/resilience-action-plans.html](https://nj.gov/dep/climatechange/resilience-action-plans.html) at any time until May 20<sup>th</sup>



The Interagency Council invites public feedback on the Draft Extreme Heat Resilience Action Plan by **Monday, May 20, 2024**.

Visit the website linked below:

[dep.nj.gov/climatechange/resilience/resilience-action-plans/](https://dep.nj.gov/climatechange/resilience/resilience-action-plans/)







# Executive Order 89

New Jersey's flagship climate resilience policy

**Nick Angarone**

Vice-Chair, Interagency Council on Climate Resilience

NJ Chief Resilience Officer



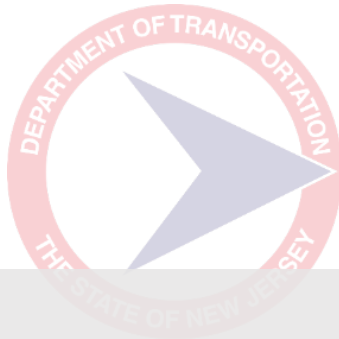
## EXECUTIVE ORDER 89:

Establishes resilience positions, offices, and councils

**NJ TRANSIT**  
The Way To Go.



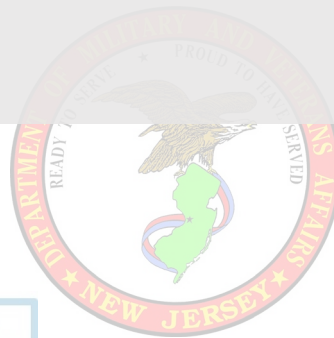
**NJ EDA**



**“An Interagency Council on Climate Resilience (the “Interagency Council”) is hereby established to coordinate the efforts of Executive Branch departments and agencies to develop and implement the Statewide Climate Change Resilience Strategy.”**



NJ DEPARTMENT OF  
Community Affairs



# EXECUTIVE ORDER 89:

Establishes resilience positions, offices, and councils

**NJ TRANSIT**  
The Way To Go.



**NJ EDA**



**PORT  
AUTHORITY  
NY NJ**  
**AIR LAND RAIL SEA**



**Highlands  
Council**  
New Jersey







## EXECUTIVE ORDER 89:

### Scientific Report on Climate Change

“...under the direction of the Chief Resilience Officer, [the program] shall **develop a Scientific Report on Climate Change** based on existing data and the best available science regarding the current and anticipated environmental effects of climate change in New Jersey.”

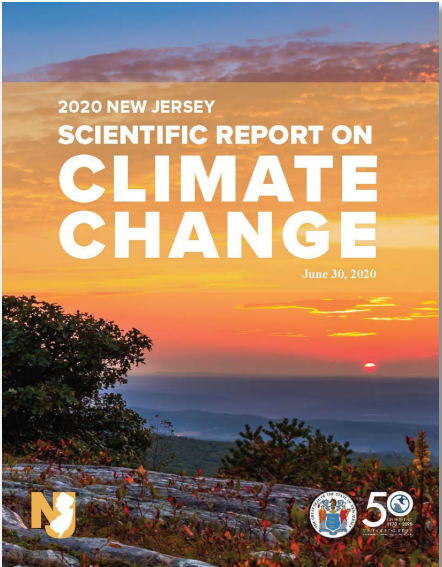


# SCIENTIFIC REPORT

on Climate Change

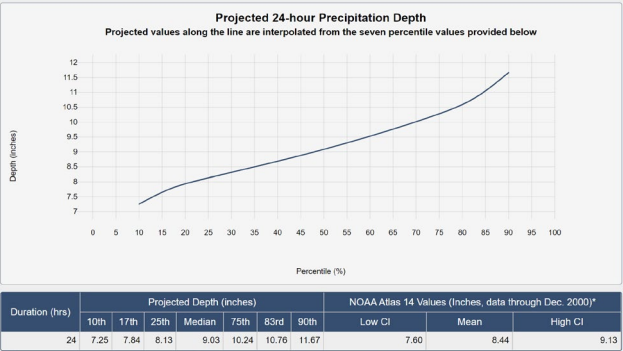
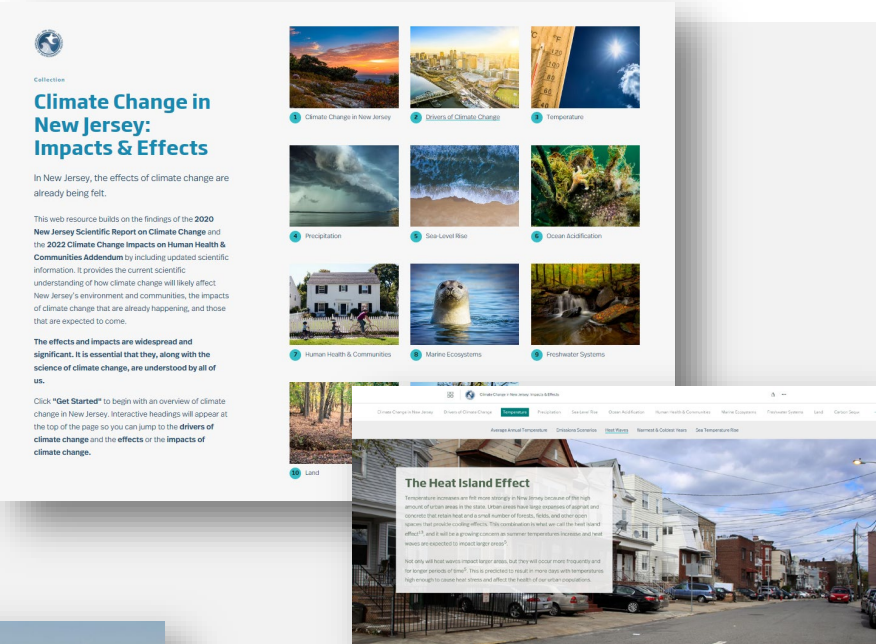
## Overview

- Comprehensive effort to synthesize the latest and most reliable scientific information on the current and predicted future impacts of climate change.
- The report is one component of the State’s comprehensive strategy to both reduce emissions of climate pollutants that fuel global warming, and proactively plan and prepare for the climate impacts that New Jersey cannot avoid.



Released June 30, 2020

## Sept. 2023: Climate Change in New Jersey StoryMap



## Nov. 2021: Updated Atlas 14 data; Extreme Event Precipitation Projections & Projection Tool



## Sept. 2022: Climate Change Impacts on Human Health & Communities Addendum



# CLIMATE RESILIENCE

defined

The ability of social and ecological systems to absorb and adapt to shocks and stresses resulting from a changing climate, while becoming better positioned to respond in the future.

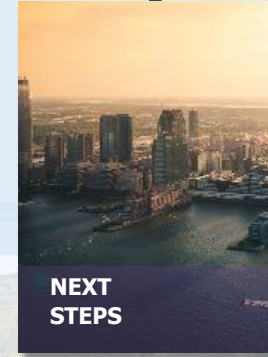
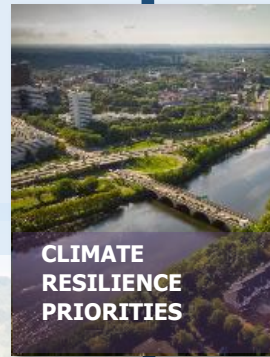
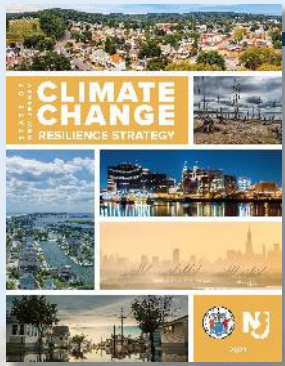


STATE OF  
NEW JERSEY

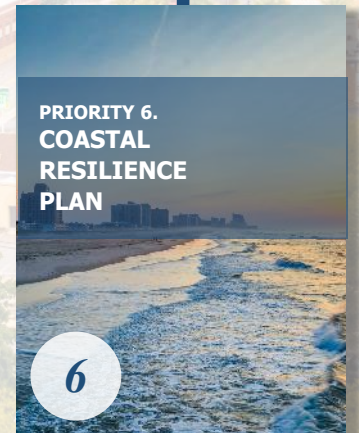
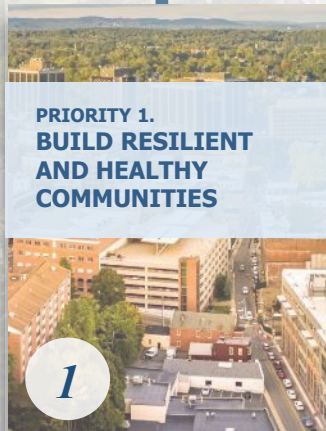
## CLIMATE CHANGE RESILIENCE STRATEGY







## CLIMATE RESILIENCE PRIORITIES



**Build  
Resilient  
and Healthy  
Communities**



**Strengthen  
the Resilience  
of New Jersey's  
Ecosystems**



**Promote  
Coordinated  
Governance**



**Invest in  
Information &  
Increase Public  
Understanding**



**Promote  
Climate-Informed  
Investments &  
Innovative Financing**



**Coastal  
Resilience  
Plan**

<https://www.nj.gov/dep/climatechange/resilience-strategy.html>





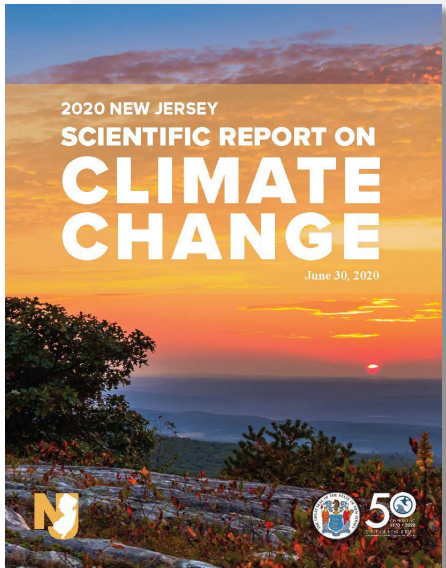


# Resilience Action Plans

**Nathaly Agosto Filión**  
NJ Deputy Chief Resilience Officer



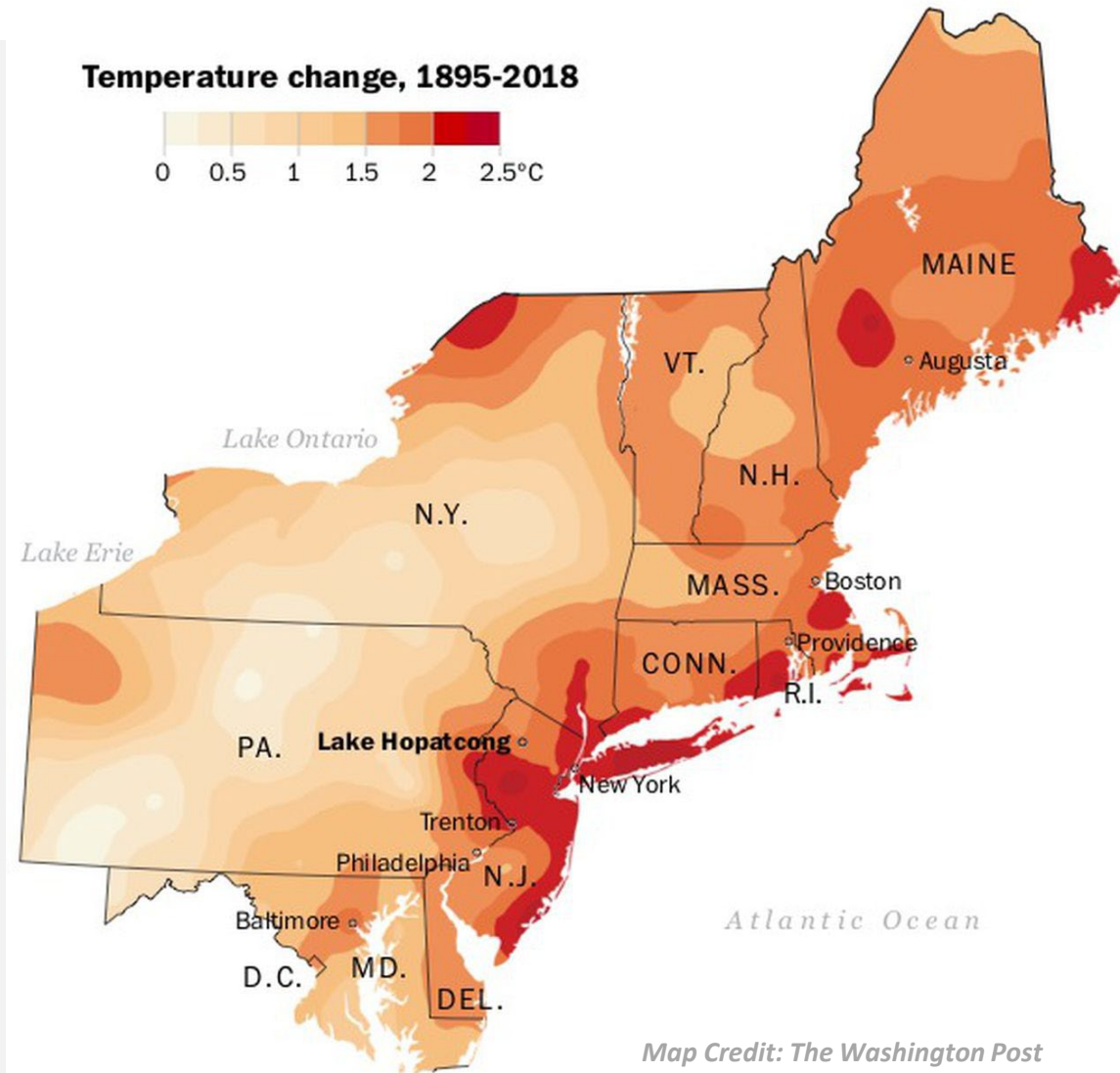
# EXTREME HEAT RESILIENCE ACTION PLAN

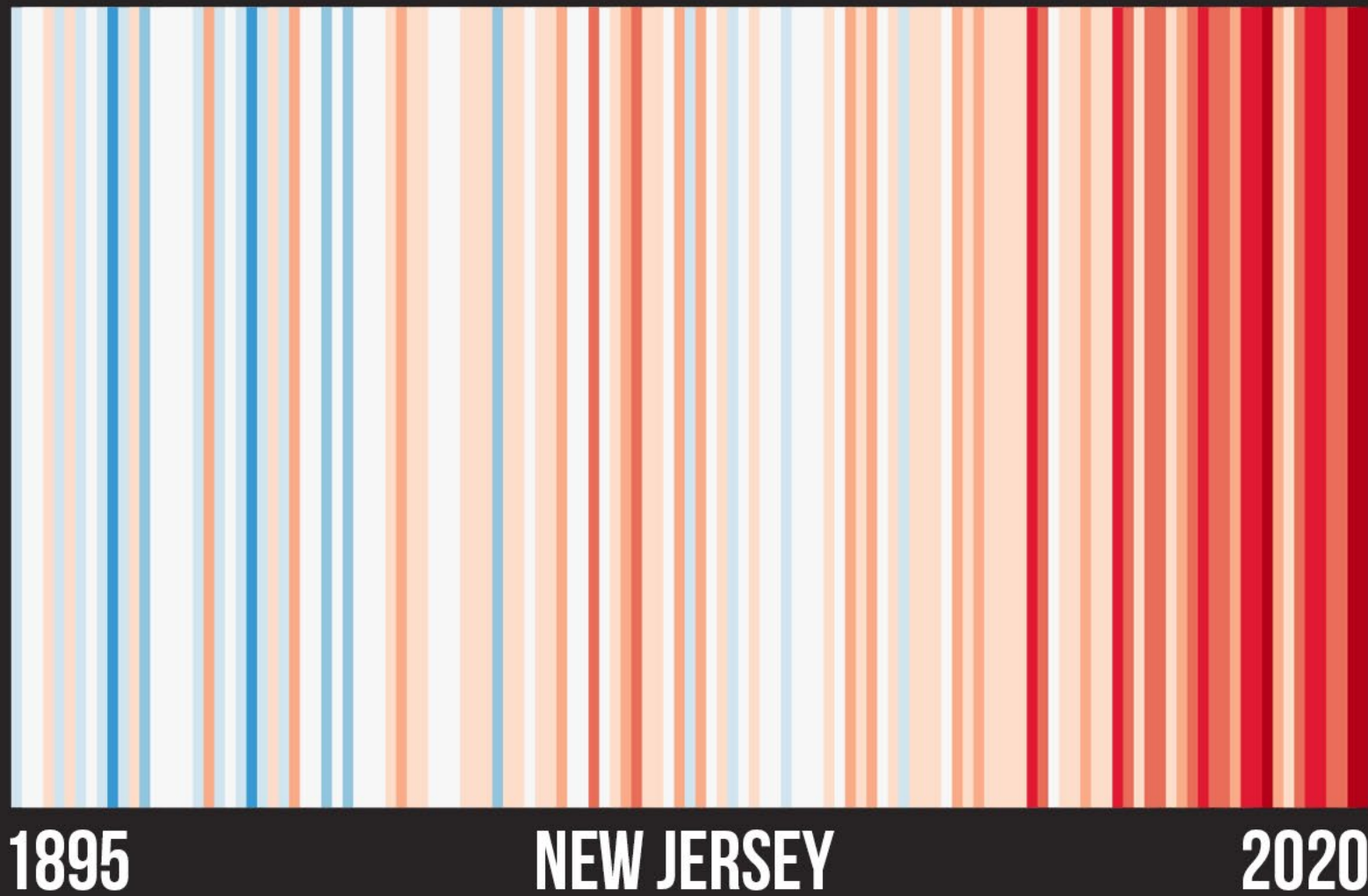


## Why Extreme Heat Now?

- New Jersey is one of the fastest warming state in the country.
- Summer temperatures in NJ in 2022 were the third hottest on record since 1895.
- High temperatures are associated with immediate and long-term health concerns, diminished air quality, and increased pressures on our food and water supply.

**Of the ten hottest summers in NJ since 1895, all ten have occurred since 1999.  
Nine have occurred since 2005.**



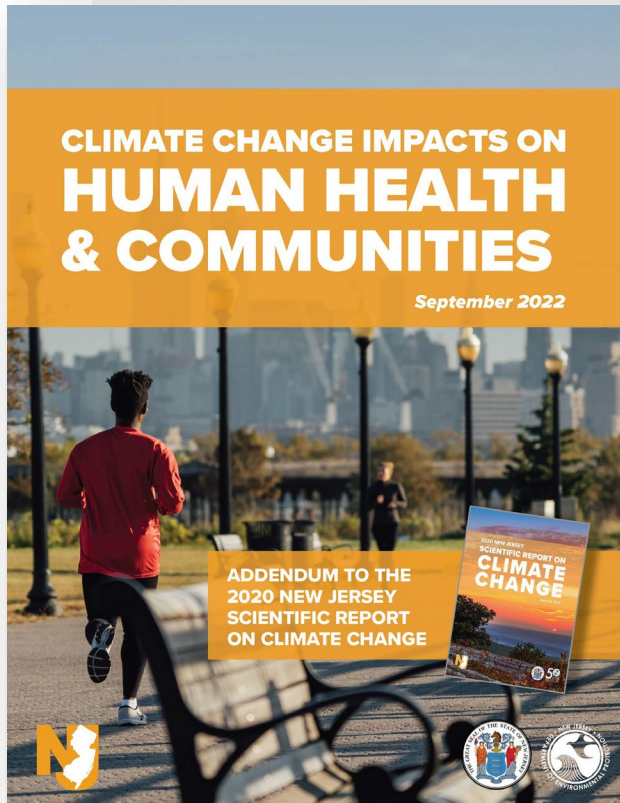


Based on Ed Hawkins "Warming Stripes".  
Source: NOAA/NCEI Climate at a Glance



# RESILIENCE ACTION PLANS

## Extreme Heat & Public Health



- The body's innate ability to cool itself can be outmatched by extreme heat.
- Excessive heat acts as a **threat multiplier**, leading to increased heat-related illnesses and mortality
- Children, the elderly, individuals with chronic health conditions, and people who work outside are the most vulnerable to extreme heat.

**Overburdened communities are subject to the most severe consequences of climate change.**

- The combination of increased temperatures, precipitation, and humidity can lead to an increase in infectious disease spread.

# Extreme Heat: Who's at Risk?



**Elderly Individuals:** Our cherished seniors are more prone to heat-related illnesses due to reduced ability to regulate body temperature and preexisting health conditions.

**Children:** Young ones are highly susceptible to the heat, as their bodies have a limited capacity to adapt to extreme temperatures.

**Pregnant Women:** Expectant mothers experience increased discomfort during hot weather, as hormonal changes affect their body's heat regulation.

**Individuals with Chronic Illnesses:** Those living with chronic conditions such as heart or kidney disease, respiratory issues, or diabetes are more susceptible to heat-related complications.

**Outdoor Workers:** Spare a thought for the dedicated individuals who work outdoors, often enduring long hours in the sweltering heat.

**Low-Income Communities:** Economic disparities can amplify the impact of extreme heat on vulnerable populations.

# Extreme heat impacts **every** **sector.**

---

## **INFRASTRUCTURE**

- High temperatures can damage roadways and rail tracks as well as reduce the efficiency of powerlines.
- Electricity demand spikes during periods of extreme heat strain the power grid.

## **FOOD SUPPLY**

- Rising temperatures affect the activity and spread of agricultural pests and weeds.
- An earlier spring and more frequent heat waves can disrupt crop cycles and cause harm to crops and livestock alike.
- Warmer temperatures are shifting fish populations northward, disrupting commercial fishing operations.

## **WATER SUPPLY & QUALITY**

- High temperatures and intense storms create ideal conditions for harmful algal blooms.
- Extreme heat and more frequent droughts can impact the availability of potable water.





# WHAT WILL THE ACTIONS ACCOMPLISH?

## Anticipated Outcomes

Increased education and awareness

Identification of vulnerable populations/infrastructure

Advanced scientific research/understanding

Retrofitted infrastructure (transportation and energy)

Improved coordination across agencies

Changes to state policy/standards to protect vulnerable populations

Green built environment and protection of existing tree canopy

Increased capacity in local communities

Resources funneled to underserved communities



## Public Engagement

The Interagency Council on Climate Resilience (Interagency Council) invites public comments and suggestions regarding the actions outlined in the Draft Extreme Heat Resilience Action Plan through Monday, May 20, 2024. Feedback can be submitted via the comment form, linked below. Additionally, the Interagency Council is hosting two virtual public webinars to showcase the draft Extreme Heat Resilience Action Plan on Monday, April 29, and Tuesday, May 7. Registration is required.

[nj.gov/dep/climatechange/resilience-action-plans.html](https://nj.gov/dep/climatechange/resilience-action-plans.html)



Comments and Suggestions Form

Register for Monday April 29th 5:30 PM Webinar

Register for Tuesday May 7th 1:00 PM Webinar

### Comments & Suggestions Survey - Extreme Heat Resilience Action Plan

Thank you for your input in the Extreme Heat Resilience Action Plan process.

The [New Jersey Interagency Council on Climate Resilience](https://nj.gov/dep/climatechange/resilience-action-plans.html) has released the draft Extreme Heat Resilience Action Plan to guide state agency actions to help build New Jersey's resilience to extreme heat.

To view the draft plan, please visit: <https://dep.nj.gov/climatechange/resilience/resilience-action-plans/>

Please complete this form by **May 20, 2024** to offer comments and suggestions regarding the plan.

**?** Questions or feedback? Please email [climateresilience@dep.nj.gov](mailto:climateresilience@dep.nj.gov)

1. How did you hear about the Extreme Heat Resilience Action Plan?

2. How would you describe your interest in the State's Resilience Strategy?



# Information on Respondents



*Total Respondents*

- **43% of respondents struggle to keep their homes cool** during a heat wave at least occasionally (*Question 2*)
- **Heat affects the mode of transportation** at least occasionally for **38% of respondents** (*Question 5*)
- **12%** of respondents that are **employed work outdoors or indoors without air conditioning** (*Question 6*)
- Excessive heat has affected respondents at the workplace the most by **causing them to drink more water to stay hydrated** and by causing **more frequent breaks** (*Questions 8 & 10*)

# Affects of Extreme Heat



## Top Affects of Extreme Heat to Participants *(Question 21)*



**Cost (11.5%)**



**Discomfort (7.8%)**



**Environmental Conservation (7.5%)**

## Extreme Heat Most Affects Respondent's Family Activities by:

*(Questions 11, 12, & 13)*

- Adjusting schedules to be outside while it's less hot
- Taking more frequent water breaks
- Change activities to lower intensity activities in places that are cooler (e.g., shade, air conditioning, beach, pool)
- Recreational activities taking place outside are either cancelled or rescheduled

**"East Brunswick High School is not air conditioned, so classes get canceled."**

*10 Comments Related to School Closures*

**"Generally, move indoors to AC or stay outside and do low-energy things in shade or at pools/beach."**

*70 Comments Related to Lower Intensity Activities in Cooler Places*



# Extreme Heat Concerns



## Top Extreme Heat Concerns *(Question 3)*



Cost for AC/Cooling



Impacts to Health of Loved Ones



Impacts to Own Health



Finding Shade Outside



Having to Work in Excessive Heat



No/Limited Access to AC

---

## Top Extreme Heat Concerns that Trigger other Threats/Challenges *(Question 18)*



Ecosystems/Wildlife



Air Quality



Drought



Crop Production



Wildfire



Drinking Water Quality

# Community Amenities

## Top Existing Amenities Identified by Respondents *(Question 14)*

- Parks/greenspace that have shade (2,140 votes)
- Street trees (1,687 votes)
- Shade structures in playgrounds and parks (1,352 votes)
- Free places for air conditioning (1,259 votes)
- Water fountains/water bottle stations (495 votes)
- Recreational water features (462 votes)
- No Current Amenities (246 votes)

## "Other" Responses

"Newark doesn't have enough tree canopy so its often difficult to find shade."

*34 Comments Related to Insufficient Shade Trees*

"I am unfamiliar with community wide options but they do exist."

*31 Comments Related to Unfamiliar Knowledge*

"Living in a coastal community there is access to water (ocean, bay and river beaches) to cool off..."

*31 Comments Related to Bodies of Water*





# Community Amenities

## Top Amenities Respondents Wish Existed *(Question 15)*

- Free Wi-Fi/Electricity Access (1,281 votes)
- Recreational Community-building or Learning Events and Activities (1,181 votes)
- Free Water Stations (969 votes)
- Children's Activities (520 votes)
- Near Mass Transit (342 votes)

### "Other" Responses

"Benches in public parks at places with shade from trees."

*67 Comments Related to More Shade Trees and/or Shaded Sitting Areas*

"More splash pads and pools."

*18 Comments Related to Pools, Water Stations, and Splash Pads*

"Free places that have air conditioning that are more geared for children and their requirement for physical activity..."

*8 Comments Related to Public Places that Offer Air Conditioning*

"Shaded parking, especially with solar panels."

*4 Comments Related to Shaded Parking Areas*

# Cooling Centers



- **Awareness of Cooling Centers** *(Question 16)*
  - 24% (741 respondents) are not aware of cooling centers but would like to know more
  - 4% (137 respondents) are aware of cooling centers and have used them
- **Top Activities or Features that Would Increase Usage** *(Question 17)*
  - Free Wi-Fi/Electrical Access (1,281 votes)
  - Recreational Community-building or Learning Events and Activities (1,181 votes)
  - Free Water Stations (969 votes)
  - Children's Activities (520 votes)
  - Near Mass Transit (342 votes)
  - Wheelchair Accessible Location (223 votes)

"Only prolonged extreme heat would make us visit a cooling center."

*80 Comments Related to Prolonged Power Outage*

"Libraries are the cooling centers here. They have limited available hours. This is especially an issue on Sundays when they are closed or only open in the afternoons."

*5 Comment Related Longer Hours of Operation*



# Looking Forward

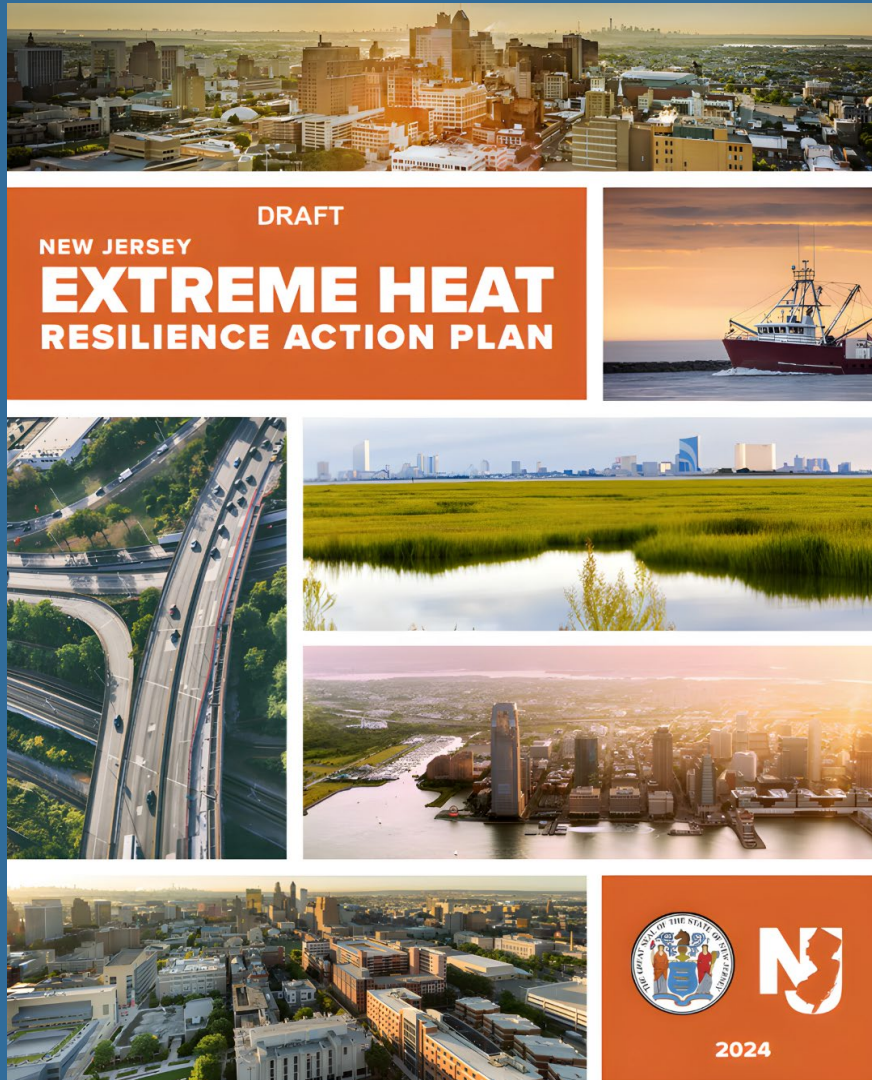


- **Top 3 Extreme Heat Policies the State Should Focus On** *(Question 19)*
  - Resources and Support for Vulnerable Populations
  - Clean Water
  - Energy Infrastructure
- **Top 3 Topics Respondents Want to Learn More About** *(Question 20)*
  - How your locality is planning for high-heat events (1,275 votes)
  - Guidance for air quality, water quality, and public health during extreme heat days (1,255 votes)
  - The effects of extreme heat on plant and animal ecosystems (1,177 votes)





# Draft Extreme Heat Resilience Action Plan



## Priority 1: Build Resilient and Healthy Communities.....

Emergency Preparedness & Response (EPR) .....

Cooling Centers (CC).....

Housing and Residential Cooling Support (HRCS).....

Worker Safety & Workplace Heat Illness Prevention (WS) .....

Public Health (PH).....

Energy Infrastructure (EI).....

Drinking Water and Water Supply (DWWS).....

Transportation (TR) .....

Municipal Capacity Building and Technical Assistance (MCB).....

Regional Planning (RP) .....

Urban Heat Islands (UHI).....

Urban Tree Canopy & Community Forestry (UTC) .....

Recreation (REC).....

## Priority 2: Strengthen the Resilience of New Jersey's Ecosystems .....

Agriculture (AG).....

Ecosystems and Habitat (ECO) .....

Harmful Algal Blooms (HAB).....

## Priority 3: Promote Coordinated Governance.....

Legal & Regulatory Affairs, Legislation & Advocacy (LRA) .....

## Priority 4: Invest in Information and Increase Public Understanding.....

Advance Scientific Understanding of Extreme Heat (ASU).....

Communications & Outreach (COM).....

## Priority 5: Promote Climate-informed Investments and Innovative Financing.....

Funding Program Revisions and Financing (FF).....



Heat Hub NJ is an online tool with all things related to extreme heat in NJ. We invite you to use this site to learn the basics of extreme heat, and how it is impacting daily life and the environment.

Visit the website linked below:

[dep.nj.gov/heathub](https://dep.nj.gov/heathub)



# Priority 1: Build Resilient and Healthy Communities

<b>Priority 1: Build Resilient and Healthy Communities.....</b>	<b>21</b>
Emergency Preparedness & Response (EPR) .....	23
Cooling Centers (CC).....	26
Housing and Residential Cooling Support (HRCS).....	29
Worker Safety & Workplace Heat Illness Prevention (WS) .....	32
Public Health (PH).....	36
Energy Infrastructure (EI).....	38
Drinking Water and Water Supply (DWWS).....	40
Transportation (TR) .....	43
Municipal Capacity Building and Technical Assistance (MCB).....	47
Regional Planning (RP) .....	51
Urban Heat Islands (UHI).....	54
Urban Tree Canopy & Community Forestry (UTC) .....	57
Recreation (REC).....	59





# Emergency Preparedness & Response (EPR)

**Expand and Support Hazard Mitigation Planning and Broad-based Education around Extreme Heat as a Climate-Related Hazard**

NJOEM | Ongoing | EPR - 1

**Continue Funding Rutgers for Development of HazAdapt Suite**

NJOEM | Ongoing | EPR - 2

**Encourage County-Level Extreme Heat Planning Focused on the Needs of the Senior**

DHS | Not Started | EPR - 3

**Apply for Federal Funds for Extreme Heat Resilience and Mitigation Projects**

DCA | Ongoing | EPR - 4

**Coordinate Heat Awareness and Risk Communication Across Agencies**

NJOEM | Ongoing | EPR - 5

# Emergency Preparedness & Response (EPR, continued)

## **Expand Register Ready Sheltering Support**

DHS | Underway | EPR - 6

## **Strategically Deploy Back-Up Power Support at Community Lifeline Facilities**

NJOEM | Ongoing | EPR - 7

## **Ensure Grid Resilience at DMAVA Facilities**

DMAVA | Underway | EPR - 8



# Cooling Centers (CC)

## **Collaborative Mapping of Places to Beat the Heat**

DEP | Not Started | CC - 1

## **“Cool It NJ” Information Campaign**

DEP | Underway | CC - 2

## **Expand the Network of Local Cooling Sites and Provide Support to Operators**

DEP / NJOEM / BPU | Ongoing | CC - 3

## **Develop Code Red Program**

State Legislature | TBD, pending legislation | CC - 4

# Housing and Residential Cooling Support (HRCS)

**Conduct Study on Air Conditioning Access in NJ**

DEP | Not Started | HRCS - 1

**Ensure Ratepayers are Informed of Cost-Saving Programs**

BPU | Ongoing | HRCS - 2

**Promote Energy Efficiency and Decarbonization Improvements for Low-Income Households Programs**

BPU | Ongoing | HRCS - 3

**Implement Whole House Initiative**

BPU | Ongoing | HRCS - 4

**Continue Implementation of the Winter Termination Program**

BPU / DCA | Completed | HRCS - 5

**Ensure Efficient and Cool New Affordable Housing**

DCA | Ongoing | HRCS - 6



# Housing and Residential Cooling Support (HRCS, continued)

**Meet Green and Resilient Building Standards During Disaster Recover**

DCA | Ongoing | HRCS - 7

**Incentivize Extreme Heat Assessments and Heat-Resilient Criteria in the National Building**

HMFA | Underway | HCRS - 8

**Identify Design Enhancements to Qualified Allocation Plan “Green Points” to Combat Extreme Heat**

HMFA | Not Started | HCRS - 9

**Identify Heat Exposure Disseminate Cooling Strategies to HMFA-Financed Portfolio Projects**

HMFA | Underway | HCRS - 10

**Mitigate Extreme Heat Conditions in Juvenile Justice Facilities**

LPS | Underway | HCRS - 11

# Worker Safety and Workplace Health Illness Prevention (WS)

**Development of Interagency Guidance & Resource Compilation for Workplace Heat Illness Prevention**

IAC | Not Started | WS - 1

**Protect Military Personnel from Extreme Heat Exposure**

DMAVA | Underway | WS - 2

**Improve Outdoor Worker Safety in Agriculture Sector**

NJDA | Not Started | WS - 3

**Develop Workplace Standards to Protect Workers in Extreme Heat Conditions**

Legislature | TBD, pending legislation | WS - 4

# Public Health (PH)

## **Expand Participation in the New Jersey Air Quality Flag Program**

DEP | Ongoing | PH - 1

## **Support Medium and Heavy-Duty Vehicle Electrification**

DEP / BPU | Underway | PH - 2

## **Characterize Risk of Increased Pathogens, Shellfish Harvesting and Recreational Water Conditions**

DEP | Underway | PH - 3

## **Encourage Individual and Community Resilience**

NJDOH | Not Started | PH - 4



# Energy Infrastructure (EI)

## **Update Energy Demand Forecasts**

BPU | Ongoing | EI - 1

## **Assess Grid Reliability in Extreme Heat Events**

BPU | Completed | EI - 2

## **Implement a New Jersey Storage Incentive Program**

BPU | Underway | EI - 3

## **Mitigate the Use of Peaker Plants**

BPU | Not Started | EI - 4

# Drinking Water and Water Supply (DWWS)

## **Analyze Evaporation and Water Uses Changes**

DEP | Underway | DWWS - 1

## **Analyze Increased Irrigation Water Demands Due to Longer Growing Season**

DEP | Underway | DWWS - 2

## **Analyze Peak Potable Water Changes Due to Increased Temperatures**

DEP | Underway | DWWS - 3

## **Analyze Changes in Groundwater Recharge**

DEP | Underway | DWWS - 4

*Continue...*

# Drinking Water and Water Supply (DWWS, continued)

## **Continue Monitoring Flash Drought Conditions**

DEP | Underway | DWWS - 5

## **Highlands Water Conservation Outreach Program**

NJ Highlands Council | Not Started | DWWS - 6

## **Incorporate Extreme Heat Considerations into Area-Wide Optimization Program**

DEP | Ongoing | DWWS - 7



# Transportation (TR)

## **Mitigate Extreme Heat Conditions While Performing Concrete Work**

NJDOT | Underway | TR - 1

## **Implement Pavement Management Systems to Combat Extreme Heat**

NJDOT | Underway | TR - 2

## **Research and Develop Heat Resilient Design and Construction Standards for Transportation Infrastructure**

NJDOT | Not Started | TR - 3

## **Analyze Extreme Heat Long-term infrastructure Exposure and Impacts**

NJTA | Not Started | TR - 4

## **Integrate Extreme Heat into Resilience Planning**

NJTA | Not Started | TR - 5

*Continue...*

# Transportation (TR, continued)

## **Update Design and Procedure Manuals**

NJTA | Underway | TR - 6

## **Implement a Cool Pavement Initiative at the Transportation Bank**

I-Bank / NJDOT | Not Started | TR - 7

## **Pilot Heat Sensors at Port Authority Sites**

PANYNJ | Scoping | TR - 8

## **Climate Risk Assessment Initiative**

PANYNJ | Underway | TR - 9

## **Evaluate HVAC Design Guidelines for Long-Term Resilience**

PANYNJ | Underway | TR - 10

# Transportation (TR, continued)

## **Update Port Authority Climate Resilience Design Guidelines**

PANYNJ | Not Started | TR - 11

## **Incorporate Extreme Heat Initiatives and Guidance into NJ Transit Projects and Planning Documents**

NJTransit | Underway | TR - 12

## **Improve Bus Shelter Design**

NJTransit | Underway | TR - 13



# Municipal Capacity Building and Technical Assistance (MCB)

**Develop Guidance for Climate Change-Relayed Hazard Vulnerability Assessments**

DEP / DOS | Underway | MCB - 1

**Develop Heat Intervention Toolkits for Built Environment**

DEP | Not Started | MCB - 2

**Expand & Enhance Resilient NJ Program**

DEP | Underway | MCB - 3

**Regional Resilience Officer Pilot Program**

DEP | Not Started | MCB - 4

**Launch Resiliency & Adaptation Plan Assistance Program (RAPP)**

DCA | Underway | MCB - 5

**Launch Just Resilience Initiative**

DEP | Not Started | MCB - 6

# Municipal Capacity Building and Technical Assistance (MCB, continued)

## **Fund Temporary Grant Writing Support Staff**

DEP | Not Started | MCB - 7

## **Provide Hazard Mitigation Technical Assistance to Communities**

NJOEM | Not Started | MCB - 8

## **Continue the Resilient Communities Program**

DCA | Ongoing | MCB - 9

## **Develop Green and Sustainable Remediation Guidance for Licensed Site Remediation Professionals**

DEP | Completed | MCB - 10

# Regional Planning (RP)

## **Continue Restoration of Meadowlands Habitats and Open Spaces**

NJSEA | Underway | RP - 1

## **Incorporate Extreme Heat Risk and Opportunities into Agency Strategic Plans**

NJSEA | Underway | RP - 2

## **Updating NJSEA's Master Plans and Guidelines to Incentivize Resilient Practices**

NJSEA | Underway | RP - 3

## **Incorporate Extreme Heat into the Highlands Regional Master Plan Update**

Highlands Council | Underway | RP - 4

## **Update to Highlands Land Use Ordinance**

Highlands Council | Not Started | RP - 5

## **Incorporate Evaluation of Extreme Heat Prevention and Mitigation Strategies for Local Communities**

Highlands Council | Not Started | RP - 6

*Continue...*



# Regional Planning (RP)

## **Highlands Region Community Forestry Management Planning**

Highlands Council | Not Started | RP - 7

## **Reduce and Disconnect Impervious Surfaces**

Highlands Council | Underway | RP - 8

## **Expand NJ Highlands Water Use and Conservation Management Program**

Highlands Council | Underway | RP - 9

## **Heat-Tolerant Native Pinelands Plant Species Guidebook**

Pinelands Commission | Not Started | RP - 10

# Urban Heat Islands (UHI)

## **Urban Cooling Pilot Program**

DEP | Not Started | UHI - 1

## **Develop Heat Island Assessments and Action Strategy**

DEP | Not Started | UHI - 2

## **Inform the Public on Reducing Energy Use**

BPU | Ongoing | UHI - 3

## **Minimize Urban Heat Island Effect in Major Infrastructure Projects**

DEP | Underway | UHI - 4

## **Encourage Redevelopment of Brownfields into Green Spaces**

DEP | Underway | UHI - 4

# Urban Tree Canopy and Community Forestry (UTC)

**Expand Urban & Community Forestry Program Support & Technical Assistance in Overburdened Communities**

DEP | Underway | UTC - 1

**Leverage Federal Funds to Provide Sub-Grants for Urban & Community Forestry Efforts in Overburdened Communities**

DEP | Underway | UTC - 2

**Update the Community Forestry Management Plan Guidelines**

DEP | Completed | UTC - 3

**Analyze New Jersey's Urban Canopy**

DEP | Underway | UTC - 4

**Promote Urban Canopy on Private Property**

DEP | Underway | UTC - 5



# Recreation (REC)

**Modify Green Acres Funding Requirements to Prioritize Climate and Heat Impact Mitigation**

DEP | Ongoing | REC - 1

**Continue Implementation of the Local Recreation Improvement Grant Program**

DCA | Ongoing | REC - 2

**Incorporate Cool Design Strategies in Parks**

DEP | Not Started | REC - 3

**Prevent Heat Illness During Equine Sporting Events**

LPS | Completed | REC - 4

# Priority 2: Strengthen the Resilience of New Jersey's Ecosystem

Priority 2: Strengthen the Resilience of New Jersey's Ecosystems .....	63
Agriculture (AG) .....	65
Ecosystems and Habitat (ECO) .....	69
Harmful Algal Blooms (HAB) .....	71



# Agriculture (AG)

## **Promote Climate- Smart Practices**

NJDA | Underway | AG - 1

## **Provide Localized Assistance, Planning, and Funding for Soil Conservation Districts**

NJDA | Not Started | AG - 2

## **Revise the Conservation Cost Share Program Rules**

NJDA | Underway | AG - 3

## **Launch a State-Specific Commercial Crop Breeding Program**

NJDA | Not Started | AG - 4

# Agriculture (AG, continued)

**Communicate Practical Conservation for Livestock Producers Within Watersheds and Riparian Corridors**

NJDA | Underway | AG - 5

**Reduce Human Health Impacts Associated with Livestock Mortality**

NJDA | Underway | AG - 6

**Utilize and Share the Rutgers Urban Agriculture Report**

NJDA | Completed | AG - 7



# Ecosystems and Habitat (ECO)

## **Promote Forest Restoration and Preservation in the Highlands**

Highlands Council | Underway | ECO - 1

## **Enhance Forest Resilience in Wildlife Management Areas**

DEP | Not Started | ECO - 2

## **Remove Dams Where Appropriate**

DEP | Underway | ECO - 3

## **Protect Coldwater Riparian Habitats**

DEP | Underway | ECO - 4

## **Assess Baseline Species and Climatological Records**

DEP | Not Started | ECO - 5

# Harmful Algal Bloom (HAB)

## **Respond to the Impact of Harmful Algal Blooms on Recreation**

DEP | Underway | HAB - 1

## **Protect Drinking Water Sources from HAB Impacts**

DEP | Underway | HAB - 2

## **Empower Harmful Algal Blooms Research**

DEP | Not Started | HAB - 3

## **Implement the DEP Water Infrastructure Implementation Plan**

DEP | Ongoing | HAB - 4

# Priority 3: Promote Coordinate Governance

Priority 3: Promote Coordinated Governance.....	75
Legal & Regulatory Affairs, Legislation & Advocacy (LRA) .....	77



# Legal and Regulatory Affairs, Legislation and Advocacy (LRA)

**Evaluate Amending Rules and Regulations Around Vegetative Mitigation**

DEP | Underway | LRA - 1

**Build Climate Resilience into Contaminated Site Remediation and Restoration Plans**

DEP | Not Started | LRA - 2

**Cooperate on Multistate Climate Change Policy and Litigation Advocacy**

LPS | Underway | LRA - 3



# Priority 4: Invest in Information and Increase Public Understanding

Priority 4: Invest in Information and Increase Public Understanding.....	79
Advance Scientific Understanding of Extreme Heat (ASU).....	81
Communications & Outreach (COM).....	84



# Advance Scientific Understanding of Extreme Heat (ASU)

## **Conduct Temperature-Related Literature Reviews**

DEP | Ongoing | ASU - 1

## **Ground Truth Surface Temperature Observations**

DEP | Underway | ASU - 2

## **Monitor Changes in Surface Water Temperatures**

DEP | Ongoing | ASU - 3

## **Assess Sea Surface Temperature Extremes**

DEP | Not Started | ASU - 4

# Advance Scientific Understanding of Extreme Heat (ASU, continued)

## **Study Offsite Runoff Effects on Trout Streams**

DEP | Not Started | ASU - 5

## **Improve Understanding of Heat-Related Climate Vulnerability of Marine Resources**

DEP | Ongoing | ASU - 6

## **Update New Jersey Climate Model Projections**

DEP | Not Started | ASU - 7

# Communications and Outreach (COM)

## **Develop a Cool Buddy Program**

DHS | Not Started | COM - 1

## **Develop an Extreme Heat Resource Guide for Vulnerable Populations**

DHS | Not Started | COM - 2

## **Develop Education Resources for Small Businesses**

DOS | Not Started | COM - 3

## **Launch Meadowlands Climate Change and Heat Extremes Education Campaign**

NJSEA | Underway | COM - 4



# Communications and Outreach (COM, continued)

## **Conduct Extreme Heat Public Outreach to Veterans and Their Families**

DMAVA | Underway | COM - 5

## **Expand Surveillance, Analysis, Tracking, and Publication of Heat-related Illness Data and Educational Resources**

NJDOH | Underway | COM - 6

## **Launch Extreme Heat, Cool Communications Outreach Campaign**

IAC | Underway | COM - 7

## **Leverage Social Media Communications for Visitors to State Parks, Forests & Historic Sites**

DEP | Underway | COM - 8

# Priority 5: Promote Climate-Informed Investments and Innovative Financing

Priority 5: Promote Climate-informed Investments and Innovative Financing....87  
Funding Program Revisions and Financing (FF)..... 89



# Funding Program Revisions and Financing (FF)

**Continue Implementation of the Natural Climate Solutions Grant Program**

DEP | Ongoing | FF - 1

**Identify, Prioritize, and Incentivize Water Bank Projects that Incorporate Green Infrastructure**

I-Bank / DEP | Not Started | FF - 2

**Support Communities Using Transportation Set-Aside Funds for Shade Improvements**

NJDOT | Underway | FF - 3

**Launch a Multimodal Shade Tree Initiative**

I-Bank / NJDOT | Not Started | FF - 4

*Continue...*

# Funding Program Revisions and Financing (FF)

## **Develop Extreme Heat Underwriting Guidelines**

HMFA | Not Started | FF - 5

## **Incorporate Extreme Heat Risk and Opportunities into Incentive Programs**

NJEDA | Completed | FF - 6

## **Implement the Federal STORM Act**

NJOEM | Not Started | FF - 7

## **Identify Bidding, Services, and Contracting Opportunities to Prepare for Extreme Heat**

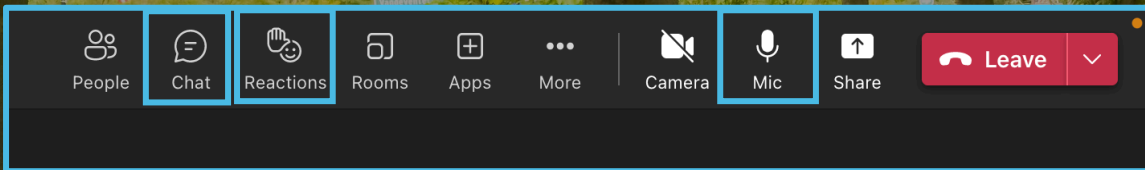
IAC | Ongoing | FF - 8

## **Provide Emergency Resources to Small Businesses During Extreme Heat Events**

NJEDA | Not Started | FF - 9



# Share verbal feedback



We will now call on those who pre-registered to provide verbal comment during today's meeting.

If you wish to be added to the speaker list, you may:

- Use the "raise your hand" function if you would like to provide verbal comment.
- We will do our best to hear from as many people as we can during the available time.

We invite you to complete the online public form after this meeting at [dep.nj.gov/climatechange/resilience/resilience-action-plans/](https://dep.nj.gov/climatechange/resilience/resilience-action-plans/) at any time before Monday, May 20, 2024.



60

40

20

wrap

Kindly keep your remarks to 1 minute or less.



The Interagency Council invites public feedback on the Draft Extreme Heat Resilience Action Plan by **Monday, May 20, 2024**.

Visit the website linked below:

[dep.nj.gov/climatechange/resilience/resilience-action-plans/](https://dep.nj.gov/climatechange/resilience/resilience-action-plans/)

