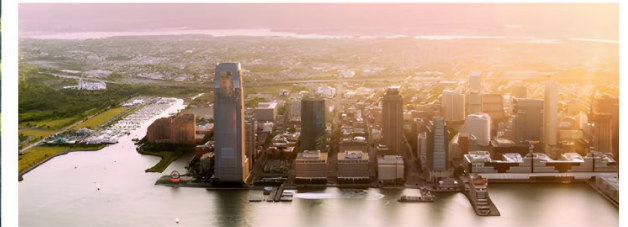


Draft Extreme Heat Resilience Action Plan

Webinar | April 29, 2024

Presented by the NJ Interagency Council on Climate Resilience



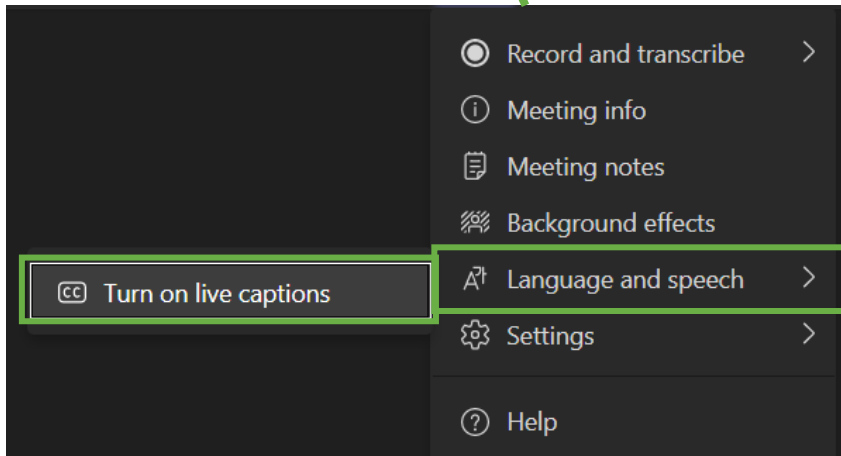
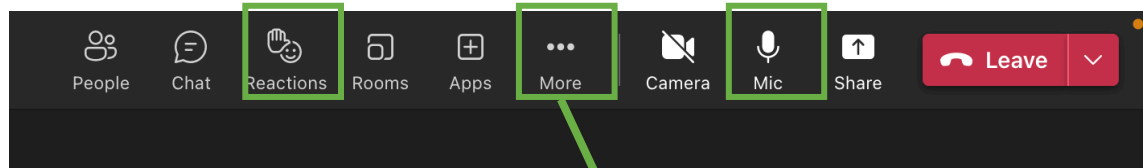
Housekeeping

This webinar is being recorded. Your presence at this meeting indicates you agree to be recorded. Shortly after the conclusion of the webinar, the recording and slide deck will be posted at nj.gov/dep/climatechange/resilience-action-plans.html.

All participants are muted during the presentation portion of the webinar. We will un-mute participants at the end of the presentation to share comments.

If you have a comment, you may:

- Use the "raise your hand" function at the end of the webinar. We'll take all verbal comments at the end of the presentation.
- Use the online form at nj.gov/dep/climatechange/resilience-action-plans.html at any time until May 20th



The Interagency Council invites public feedback on the Draft Extreme Heat Resilience Action Plan by **Monday, May 20, 2024**.

Visit the website linked below:

dep.nj.gov/climatechange/resilience/resilience-action-plans/





Executive Order 89

New Jersey's flagship climate resilience policy

Nick Angarone

Vice-Chair, Interagency Council on Climate Resilience

NJ Chief Resilience Officer

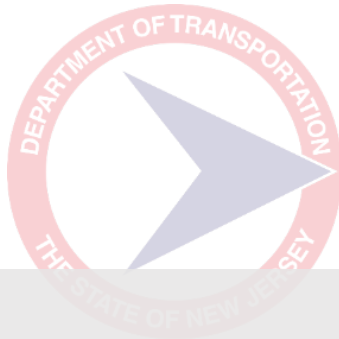
EXECUTIVE ORDER 89:

Establishes resilience positions, offices, and councils

NTRANSIT
The Way To Go.



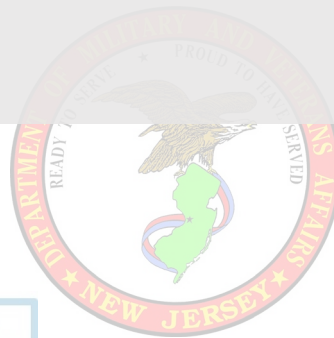
NJ EDA



“An Interagency Council on Climate Resilience (the “Interagency Council”) is hereby established to coordinate the efforts of Executive Branch departments and agencies to develop and implement the Statewide Climate Change Resilience Strategy.”



NJ DEPARTMENT OF
Community Affairs



EXECUTIVE ORDER 89:

Establishes resilience positions, offices, and councils

NJ TRANSIT
The Way To Go.



NJ EDA



**PORT
AUTHORITY
NY NJ**
AIR LAND RAIL SEA



**Highlands
Council**
New Jersey



An aerial photograph showing a dense green forest on the right and a wetland area with a winding blue river on the left. The wetland has patches of yellowish-brown vegetation. A semi-transparent dark green box is overlaid on the top left.

EXECUTIVE ORDER 89:

Scientific Report on Climate Change

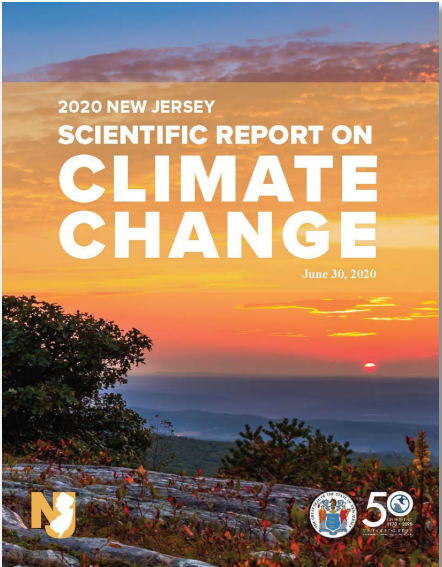
“...under the direction of the Chief Resilience Officer, [the program] shall **develop a Scientific Report on Climate Change** based on existing data and the best available science regarding the current and anticipated environmental effects of climate change in New Jersey.”

SCIENTIFIC REPORT

on Climate Change

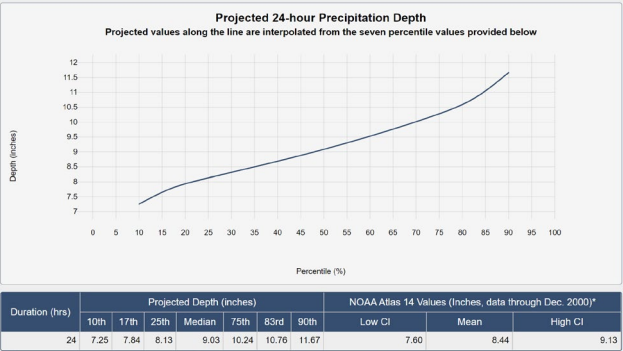
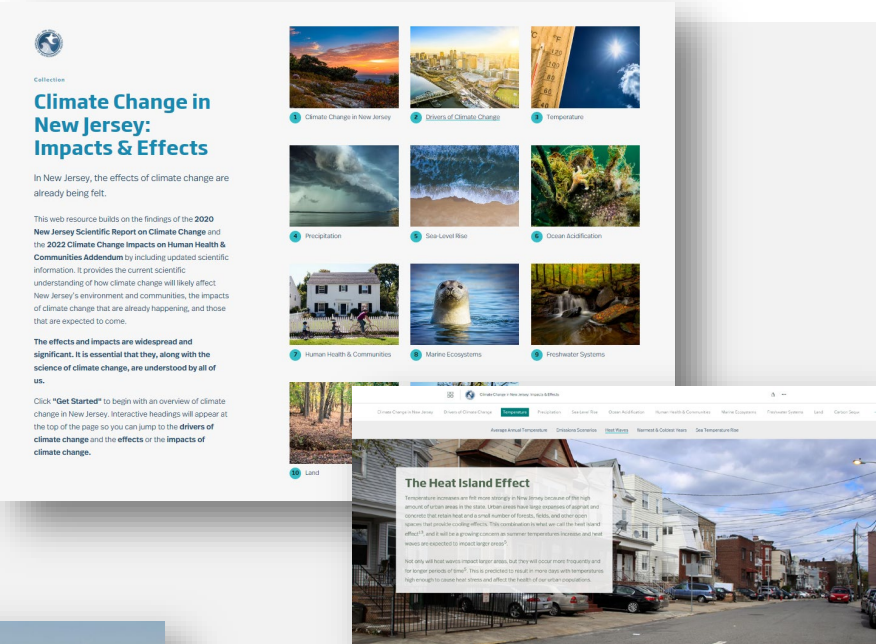
Overview

- Comprehensive effort to synthesize the latest and most reliable scientific information on the current and predicted future impacts of climate change.
- The report is one component of the State’s comprehensive strategy to both reduce emissions of climate pollutants that fuel global warming, and proactively plan and prepare for the climate impacts that New Jersey cannot avoid.



Released June 30, 2020

Sept. 2023: Climate Change in New Jersey StoryMap



Nov. 2021: Updated Atlas 14 data; Extreme Event Precipitation Projections & Projection Tool



Sept. 2022: Climate Change Impacts on Human Health & Communities Addendum



CLIMATE RESILIENCE

defined

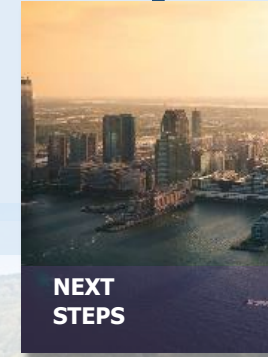
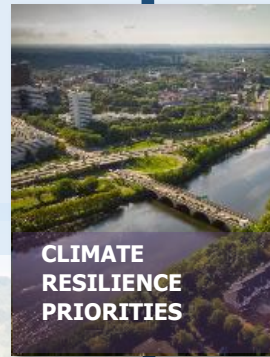
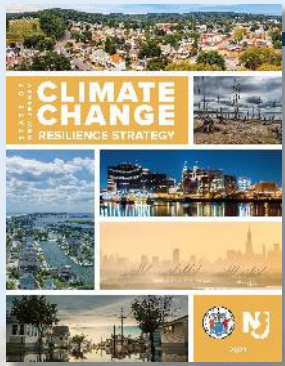
The ability of social and ecological systems to absorb and adapt to shocks and stresses resulting from a changing climate, while becoming better positioned to respond in the future.



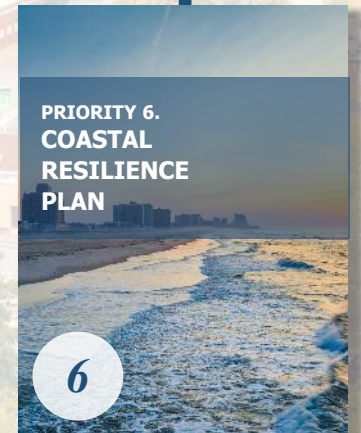
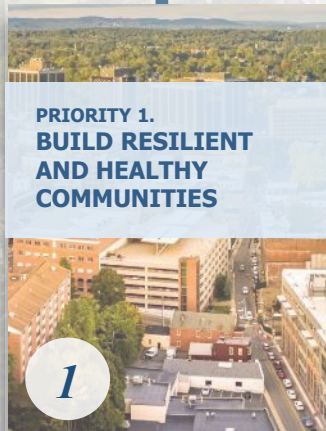
STATE OF
NEW JERSEY

CLIMATE CHANGE RESILIENCE STRATEGY





CLIMATE RESILIENCE PRIORITIES



**Build
Resilient
and Healthy
Communities**



**Strengthen
the Resilience
of New Jersey's
Ecosystems**



**Promote
Coordinated
Governance**



**Invest in
Information &
Increase Public
Understanding**



**Promote
Climate-Informed
Investments &
Innovative Financing**



**Coastal
Resilience
Plan**

<https://www.nj.gov/dep/climatechange/resilience-strategy.html>

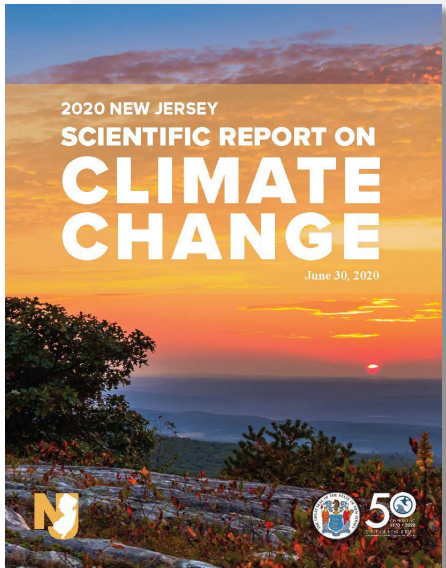




Resilience Action Plans

Nathaly Agosto Filión
NJ Deputy Chief Resilience Officer

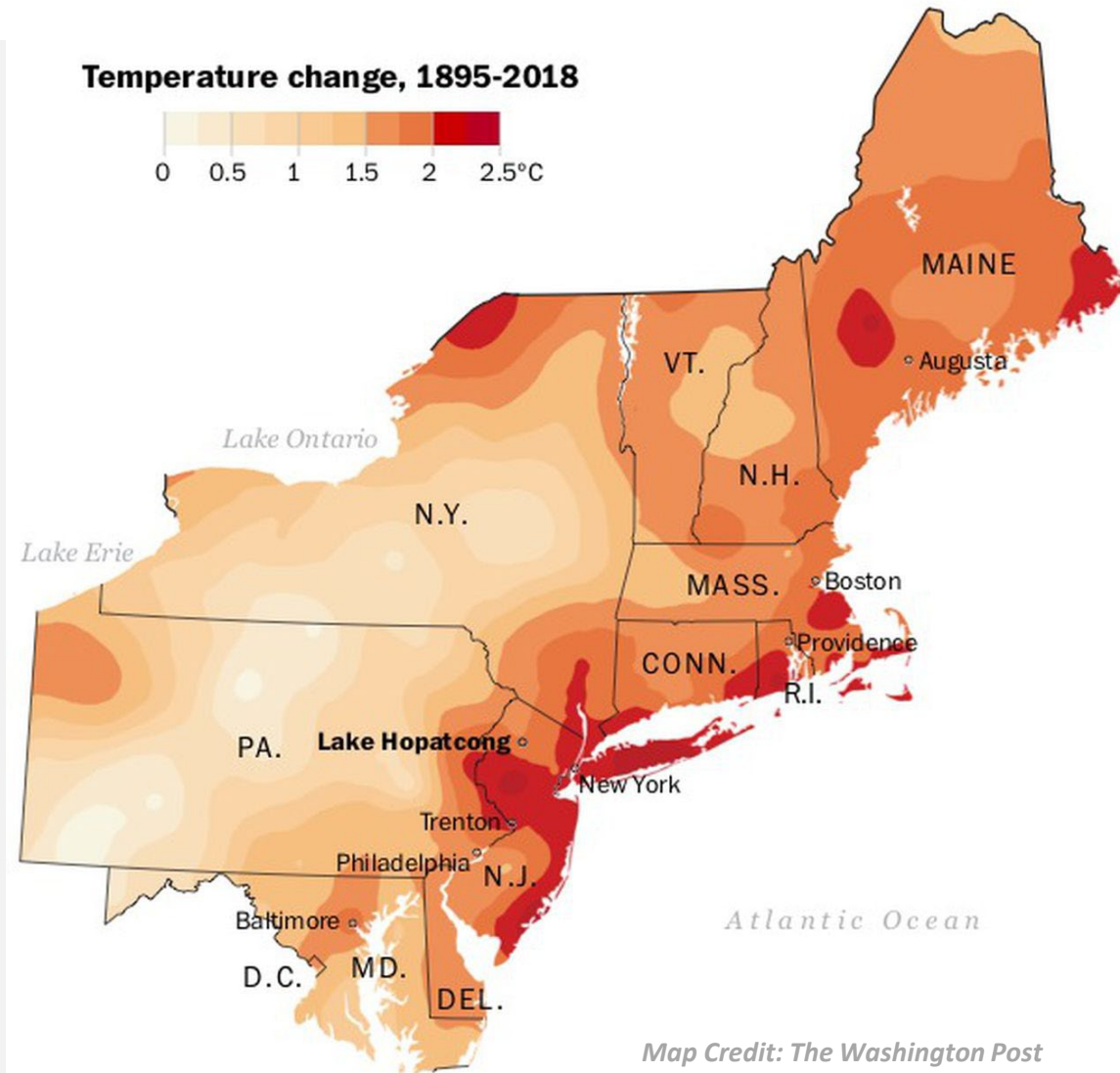
EXTREME HEAT RESILIENCE ACTION PLAN

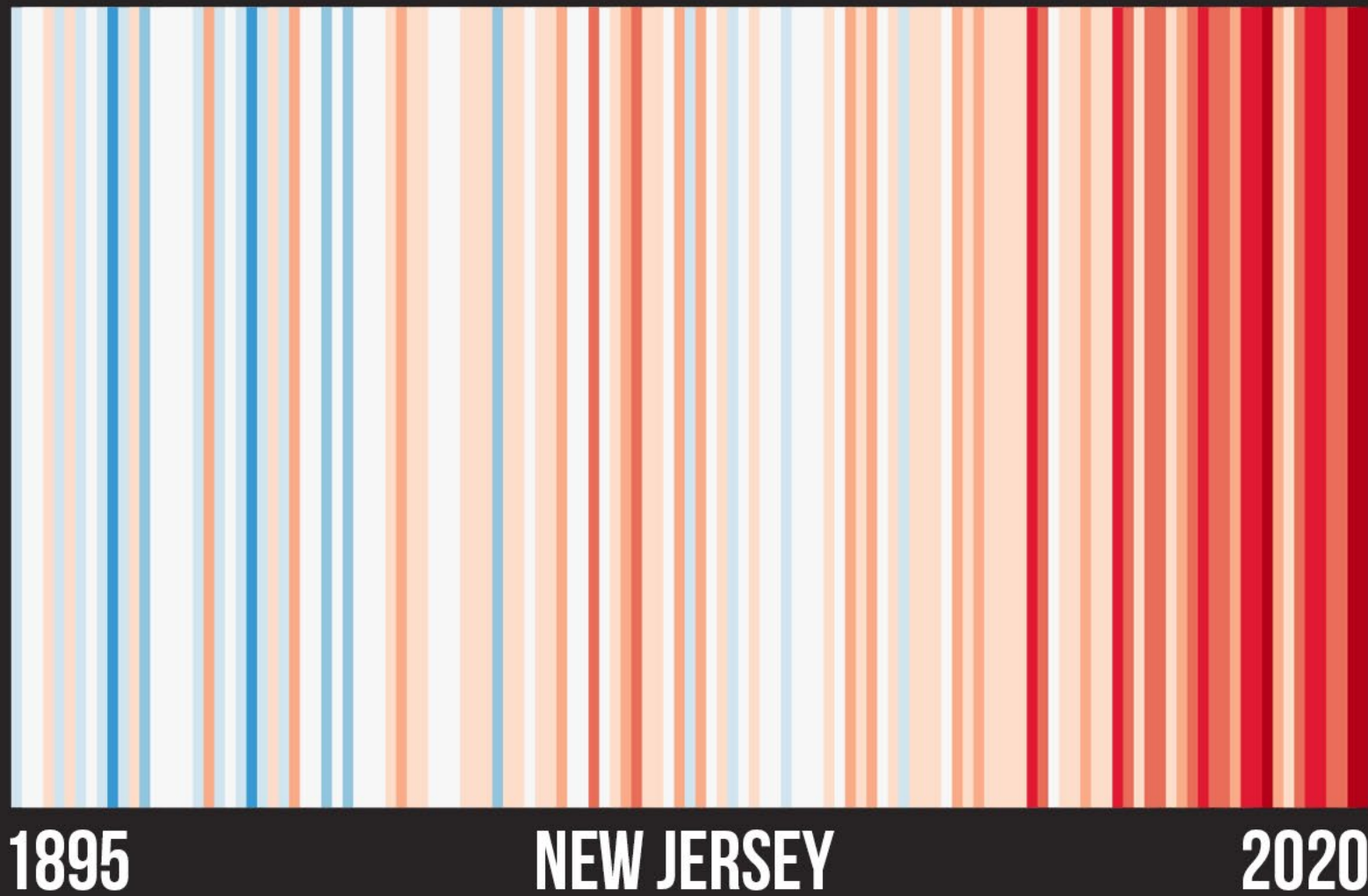


Why Extreme Heat Now?

- New Jersey is one of the fastest warming state in the country.
- Summer temperatures in NJ in 2022 were the third hottest on record since 1895.
- High temperatures are associated with immediate and long-term health concerns, diminished air quality, and increased pressures on our food and water supply.

**Of the ten hottest summers in NJ since 1895, all ten have occurred since 1999.
Nine have occurred since 2005.**

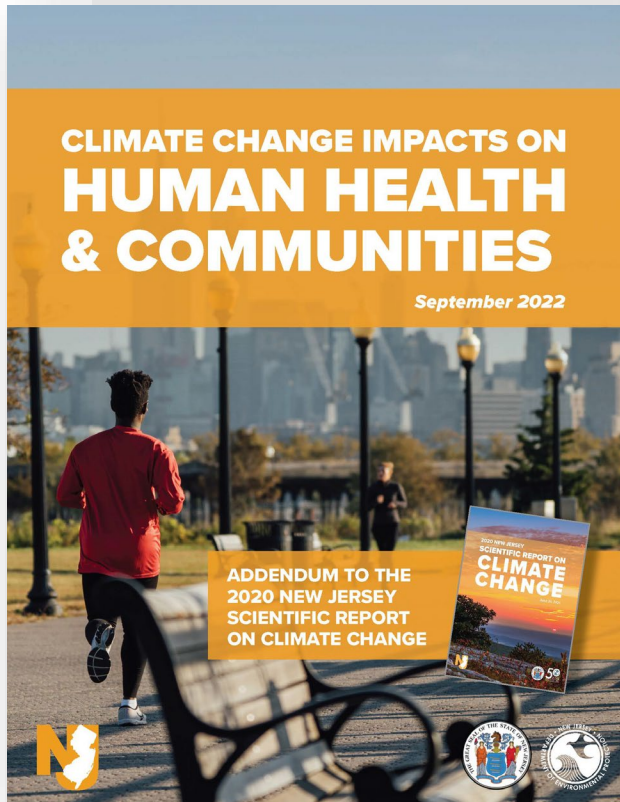




Based on Ed Hawkins "Warming Stripes".
Source: NOAA/NCEI Climate at a Glance

RESILIENCE ACTION PLANS

Extreme Heat & Public Health



- The body's innate ability to cool itself can be outmatched by extreme heat.
- Excessive heat acts as a **threat multiplier**, leading to increased heat-related illnesses and mortality
- Children, the elderly, individuals with chronic health conditions, and people who work outside are the most vulnerable to extreme heat.

Overburdened communities are subject to the most severe consequences of climate change.

- The combination of increased temperatures, precipitation, and humidity can lead to an increase in infectious disease spread.

Extreme Heat: Who's at Risk?



Elderly Individuals: Our cherished seniors are more prone to heat-related illnesses due to reduced ability to regulate body temperature and preexisting health conditions.

Children: Young ones are highly susceptible to the heat, as their bodies have a limited capacity to adapt to extreme temperatures.

Pregnant Women: Expectant mothers experience increased discomfort during hot weather, as hormonal changes affect their body's heat regulation.

Individuals with Chronic Illnesses: Those living with chronic conditions such as heart or kidney disease, respiratory issues, or diabetes are more susceptible to heat-related complications.

Outdoor Workers: Spare a thought for the dedicated individuals who work outdoors, often enduring long hours in the sweltering heat.

Low-Income Communities: Economic disparities can amplify the impact of extreme heat on vulnerable populations.

Extreme heat impacts **every** **sector.**

INFRASTRUCTURE

- High temperatures can damage roadways and rail tracks as well as reduce the efficiency of powerlines.
- Electricity demand spikes during periods of extreme heat strain the power grid.

FOOD SUPPLY

- Rising temperatures affect the activity and spread of agricultural pests and weeds.
- An earlier spring and more frequent heat waves can disrupt crop cycles and cause harm to crops and livestock alike.
- Warmer temperatures are shifting fish populations northward, disrupting commercial fishing operations.

WATER SUPPLY & QUALITY

- High temperatures and intense storms create ideal conditions for harmful algal blooms.
- Extreme heat and more frequent droughts can impact the availability of potable water.



WHAT WILL THE ACTIONS ACCOMPLISH?

Anticipated Outcomes

Increased education and awareness

Identification of vulnerable populations/infrastructure

Advanced scientific research/understanding

Retrofitted infrastructure (transportation and energy)

Improved coordination across agencies

Changes to state policy/standards to protect vulnerable populations

Green built environment and protection of existing tree canopy

Increased capacity in local communities

Resources funneled to underserved communities



Public Engagement

The Interagency Council on Climate Resilience (Interagency Council) invites public comments and suggestions regarding the actions outlined in the Draft Extreme Heat Resilience Action Plan through Monday, May 20, 2024. Feedback can be submitted via the comment form, linked below. Additionally, the Interagency Council is hosting two virtual public webinars to showcase the draft Extreme Heat Resilience Action Plan on Monday, April 29, and Tuesday, May 7. Registration is required.

nj.gov/dep/climatechange/resilience-action-plans.html

NEW JERSEY EXTREME HEAT RESILIENCE ACTION PLAN

Find the Webinar Registration and Public Comment & Suggestions Form (due May 20th):
dep.nj.gov/climatechange/resilience/resilience-action-plans/

Learn more at our virtual webinars:
Monday April 29th | 5:30 pm - 6:30 pm
Tuesday May 7th | 1:00 pm - 2:00 pm



Comments and Suggestions Form

Register for Monday April 29th 5:30 PM Webinar

Comments & Suggestions Survey - Extreme Heat Resilience Action Plan

Thank you for your input in the Extreme Heat Resilience Action Plan process.

The [New Jersey Interagency Council on Climate Resilience](https://www.nj.gov/interagency-council-on-climate-resilience/) has released the draft Extreme Heat Resilience Action Plan to guide state agency actions to help build New Jersey's resilience to extreme heat.

To view the draft plan, please visit: <https://dep.nj.gov/climatechange/resilience/resilience-action-plans/>

Please complete this form by **May 20, 2024** to offer comments and suggestions regarding the plan.

? Questions or feedback? Please email climateresilience@dep.nj.gov

1. How did you hear about the Extreme Heat Resilience Action Plan?

2. How would you describe your interest in the State's Resilience Strategy?

☐ I'm a concerned resident

☐ I'm a business owner or employee of a business

Information on Respondents



Total Respondents



- **43% of respondents struggle to keep their homes cool** during a heat wave at least occasionally (*Question 2*)
- **Heat affects the mode of transportation** at least occasionally for **38% of respondents** (*Question 5*)
- **12%** of respondents that are **employed work outdoors or indoors without air conditioning** (*Question 6*)
- Excessive heat has affected respondents at the workplace the most by **causing them to drink more water to stay hydrated** and by causing **more frequent breaks** (*Questions 8 & 10*)

Affects of Extreme Heat



Top Affects of Extreme Heat to Participants *(Question 21)*



Cost (11.5%)



Discomfort (7.8%)



Environmental Conservation (7.5%)

Extreme Heat Most Affects Respondent's Family Activities by:

(Questions 11, 12, & 13)

- Adjusting schedules to be outside while it's less hot
- Taking more frequent water breaks
- Change activities to lower intensity activities in places that are cooler (e.g., shade, air conditioning, beach, pool)
- Recreational activities taking place outside are either cancelled or rescheduled

"East Brunswick High School is not air conditioned, so classes get canceled."

10 Comments Related to School Closures

"Generally, move indoors to AC or stay outside and do low-energy things in shade or at pools/beach."

70 Comments Related to Lower Intensity Activities in Cooler Places

Extreme Heat Concerns



Top Extreme Heat Concerns *(Question 3)*



Cost for AC/Cooling



Impacts to Health of Loved Ones



Impacts to Own Health



Finding Shade Outside



Having to Work in Excessive Heat



No/Limited Access to AC

Top Extreme Heat Concerns that Trigger other Threats/Challenges *(Question 18)*



Ecosystems/Wildlife



Air Quality



Drought



Crop Production



Wildfire



Drinking Water Quality

Community Amenities

Top Existing Amenities Identified by Respondents *(Question 14)*

- Parks/greenspace that have shade (2,140 votes)
- Street trees (1,687 votes)
- Shade structures in playgrounds and parks (1,352 votes)
- Free places for air conditioning (1,259 votes)
- Water fountains/water bottle stations (495 votes)
- Recreational water features (462 votes)
- No Current Amenities (246 votes)

"Other" Responses

"Newark doesn't have enough tree canopy so its often difficult to find shade."

34 Comments Related to Insufficient Shade Trees

"I am unfamiliar with community wide options but they do exist."

31 Comments Related to Unfamiliar Knowledge

"Living in a coastal community there is access to water (ocean, bay and river beaches) to cool off..."

31 Comments Related to Bodies of Water



Community Amenities

Top Amenities Respondents Wish Existed *(Question 15)*

- Free Wi-Fi/Electricity Access (1,281 votes)
- Recreational Community-building or Learning Events and Activities (1,181 votes)
- Free Water Stations (969 votes)
- Children's Activities (520 votes)
- Near Mass Transit (342 votes)

"Other" Responses

"Benches in public parks at places with shade from trees."

67 Comments Related to More Shade Trees and/or Shaded Sitting Areas

"More splash pads and pools."

18 Comments Related to Pools, Water Stations, and Splash Pads

"Free places that have air conditioning that are more geared for children and their requirement for physical activity..."

8 Comments Related to Public Places that Offer Air Conditioning

"Shaded parking, especially with solar panels."

4 Comments Related to Shaded Parking Areas

Cooling Centers



- **Awareness of Cooling Centers** *(Question 16)*
 - 24% (741 respondents) are not aware of cooling centers but would like to know more
 - 4% (137 respondents) are aware of cooling centers and have used them
- **Top Activities or Features that Would Increase Usage** *(Question 17)*
 - Free Wi-Fi/Electrical Access (1,281 votes)
 - Recreational Community-building or Learning Events and Activities (1,181 votes)
 - Free Water Stations (969 votes)
 - Children's Activities (520 votes)
 - Near Mass Transit (342 votes)
 - Wheelchair Accessible Location (223 votes)

"Only prolonged extreme heat would make us visit a cooling center."

80 Comments Related to Prolonged Power Outage

"Libraries are the cooling centers here. They have limited available hours. This is especially an issue on Sundays when they are closed or only open in the afternoons."

5 Comment Related Longer Hours of Operation

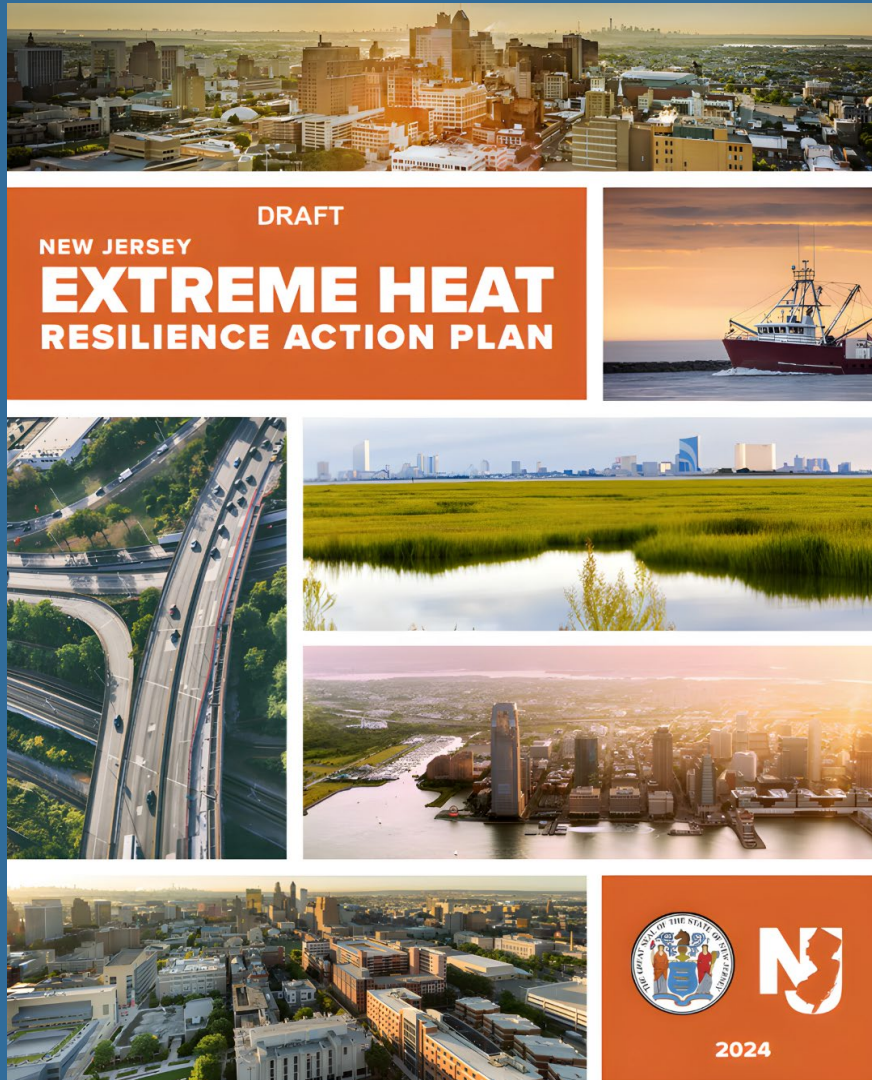
Looking Forward



- **Top 3 Extreme Heat Policies the State Should Focus On** *(Question 19)*
 - Resources and Support for Vulnerable Populations
 - Clean Water
 - Energy Infrastructure
- **Top 3 Topics Respondents Want to Learn More About** *(Question 20)*
 - How your locality is planning for high-heat events (1,275 votes)
 - Guidance for air quality, water quality, and public health during extreme heat days (1,255 votes)
 - The effects of extreme heat on plant and animal ecosystems (1,177 votes)



Draft Extreme Heat Resilience Action Plan



Priority 1: Build Resilient and Healthy Communities.....

Emergency Preparedness & Response (EPR)

Cooling Centers (CC).....

Housing and Residential Cooling Support (HRCS).....

Worker Safety & Workplace Heat Illness Prevention (WS)

Public Health (PH).....

Energy Infrastructure (EI).....

Drinking Water and Water Supply (DWWS).....

Transportation (TR)

Municipal Capacity Building and Technical Assistance (MCB).....

Regional Planning (RP)

Urban Heat Islands (UHI).....

Urban Tree Canopy & Community Forestry (UTC)

Recreation (REC).....

Priority 2: Strengthen the Resilience of New Jersey's Ecosystems

Agriculture (AG).....

Ecosystems and Habitat (ECO)

Harmful Algal Blooms (HAB).....

Priority 3: Promote Coordinated Governance.....

Legal & Regulatory Affairs, Legislation & Advocacy (LRA)

Priority 4: Invest in Information and Increase Public Understanding.....

Advance Scientific Understanding of Extreme Heat (ASU).....

Communications & Outreach (COM).....

Priority 5: Promote Climate-informed Investments and Innovative Financing.....

Funding Program Revisions and Financing (FF).....

Heat Hub NJ is an online tool with all things related to extreme heat in NJ. We invite you to use this site to learn the basics of extreme heat, and how it is impacting daily life and the environment.

Visit the website linked below:

dep.nj.gov/heathub



Priority 1: Build Resilient and Healthy Communities

Priority 1: Build Resilient and Healthy Communities.....	21
Emergency Preparedness & Response (EPR)	23
Cooling Centers (CC).....	26
Housing and Residential Cooling Support (HRCS).....	29
Worker Safety & Workplace Heat Illness Prevention (WS)	32
Public Health (PH).....	36
Energy Infrastructure (EI).....	38
Drinking Water and Water Supply (DWWS).....	40
Transportation (TR)	43
Municipal Capacity Building and Technical Assistance (MCB).....	47
Regional Planning (RP)	51
Urban Heat Islands (UHI).....	54
Urban Tree Canopy & Community Forestry (UTC)	57
Recreation (REC).....	59



Emergency Preparedness & Response (EPR)

Expand and Support Hazard Mitigation Planning and Broad-based Education around Extreme Heat as a Climate-Related Hazard

NJOEM | Ongoing | EPR - 1

Continue Funding Rutgers for Development of HazAdapt Suite

NJOEM | Ongoing | EPR - 2

Encourage County-Level Extreme Heat Planning Focused on the Needs of the Senior

DHS | Not Started | EPR - 3

Apply for Federal Funds for Extreme Heat Resilience and Mitigation Projects

DCA | Ongoing | EPR - 4

Coordinate Heat Awareness and Risk Communication Across Agencies

NJOEM | Ongoing | EPR - 5

Emergency Preparedness & Response (EPR, continued)

Expand Register Ready Sheltering Support

DHS | Underway | EPR - 6

Strategically Deploy Back-Up Power Support at Community Lifeline Facilities

NJOEM | Ongoing | EPR - 7

Ensure Grid Resilience at DMAVA Facilities

DMAVA | Underway | EPR - 8

Cooling Centers (CC)

Collaborative Mapping of Places to Beat the Heat

DEP | Not Started | CC - 1

“Cool It NJ” Information Campaign

DEP | Underway | CC - 2

Expand the Network of Local Cooling Sites and Provide Support to Operators

DEP / NJOEM / BPU | Ongoing | CC - 3

Develop Code Red Program

State Legislature | TBD, pending legislation | CC - 4

Housing and Residential Cooling Support (HRCS)

Conduct Study on Air Conditioning Access in NJ

DEP | Not Started | HRCS - 1

Ensure Ratepayers are Informed of Cost-Saving Programs

BPU | Ongoing | HRCS - 2

Promote Energy Efficiency and Decarbonization Improvements for Low-Income Households Programs

BPU | Ongoing | HRCS - 3

Implement Whole House Initiative

BPU | Ongoing | HRCS - 4

Continue Implementation of the Winter Termination Program

BPU / DCA | Completed | HRCS - 5

Ensure Efficient and Cool New Affordable Housing

DCA | Ongoing | HRCS - 6

Housing and Residential Cooling Support (HRCS, continued)

Meet Green and Resilient Building Standards During Disaster Recover

DCA | Ongoing | HRCS - 7

Incentivize Extreme Heat Assessments and Heat-Resilient Criteria in the National Building

HMFA | Underway | HCRS - 8

Identify Design Enhancements to Qualified Allocation Plan “Green Points” to Combat Extreme Heat

HMFA | Not Started | HCRS - 9

Identify Heat Exposure Disseminate Cooling Strategies to HMFA-Financed Portfolio Projects

HMFA | Underway | HCRS - 10

Mitigate Extreme Heat Conditions in Juvenile Justice Facilities

LPS | Underway | HCRS - 11

Worker Safety and Workplace Health Illness Prevention (WS)

Development of Interagency Guidance & Resource Compilation for Workplace Heat Illness Prevention

IAC | Not Started | WS - 1

Protect Military Personnel from Extreme Heat Exposure

DMAVA | Underway | WS - 2

Improve Outdoor Worker Safety in Agriculture Sector

NJDA | Not Started | WS - 3

Develop Workplace Standards to Protect Workers in Extreme Heat Conditions

Legislature | TBD, pending legislation | WS - 4

Public Health (PH)

Expand Participation in the New Jersey Air Quality Flag Program

DEP | Ongoing | PH - 1

Support Medium and Heavy-Duty Vehicle Electrification

DEP / BPU | Underway | PH - 2

Characterize Risk of Increased Pathogens, Shellfish Harvesting and Recreational Water Conditions

DEP | Underway | PH - 3

Encourage Individual and Community Resilience

NJDOH | Not Started | PH - 4

Energy Infrastructure (EI)

Update Energy Demand Forecasts

BPU | Ongoing | EI - 1

Assess Grid Reliability in Extreme Heat Events

BPU | Completed | EI - 2

Implement a New Jersey Storage Incentive Program

BPU | Underway | EI - 3

Mitigate the Use of Peaker Plants

BPU | Not Started | EI - 4

Drinking Water and Water Supply (DWWS)

Analyze Evaporation and Water Uses Changes

DEP | Underway | DWWS - 1

Analyze Increased Irrigation Water Demands Due to Longer Growing Season

DEP | Underway | DWWS - 2

Analyze Peak Potable Water Changes Due to Increased Temperatures

DEP | Underway | DWWS - 3

Analyze Changes in Groundwater Recharge

DEP | Underway | DWWS - 4

Continue...

Drinking Water and Water Supply (DWWS, continued)

Continue Monitoring Flash Drought Conditions

DEP | Underway | DWWS - 5

Highlands Water Conservation Outreach Program

NJ Highlands Council | Not Started | DWWS - 6

Incorporate Extreme Heat Considerations into Area-Wide Optimization Program

DEP | Ongoing | DWWS - 7

Transportation (TR)

Mitigate Extreme Heat Conditions While Performing Concrete Work

NJDOT | Underway | TR - 1

Implement Pavement Management Systems to Combat Extreme Heat

NJDOT | Underway | TR - 2

Research and Develop Heat Resilient Design and Construction Standards for Transportation Infrastructure

NJDOT | Not Started | TR - 3

Analyze Extreme Heat Long-term infrastructure Exposure and Impacts

NJTA | Not Started | TR - 4

Integrate Extreme Heat into Resilience Planning

NJTA | Not Started | TR - 5

Continue...

Transportation (TR, continued)

Update Design and Procedure Manuals

NJTA | Underway | TR - 6

Implement a Cool Pavement Initiative at the Transportation Bank

I-Bank / NJDOT | Not Started | TR - 7

Pilot Heat Sensors at Port Authority Sites

PANYNJ | Scoping | TR - 8

Climate Risk Assessment Initiative

PANYNJ | Underway | TR - 9

Evaluate HVAC Design Guidelines for Long-Term Resilience

PANYNJ | Underway | TR - 10

Transportation (TR, continued)

Update Port Authority Climate Resilience Design Guidelines

PANYNJ | Not Started | TR - 11

Incorporate Extreme Heat Initiatives and Guidance into NJ Transit Projects and Planning Documents

NJTransit | Underway | TR - 12

Improve Bus Shelter Design

NJTransit | Underway | TR - 13

Municipal Capacity Building and Technical Assistance (MCB)

Develop Guidance for Climate Change-Relayed Hazard Vulnerability Assessments

DEP / DOS | Underway | MCB - 1

Develop Heat Intervention Toolkits for Built Environment

DEP | Not Started | MCB - 2

Expand & Enhance Resilient NJ Program

DEP | Underway | MCB - 3

Regional Resilience Officer Pilot Program

DEP | Not Started | MCB - 4

Launch Resiliency & Adaptation Plan Assistance Program (RAPP)

DCA | Underway | MCB - 5

Launch Just Resilience Initiative

DEP | Not Started | MCB - 6

Municipal Capacity Building and Technical Assistance (MCB, continued)

Fund Temporary Grant Writing Support Staff

DEP | Not Started | MCB - 7

Provide Hazard Mitigation Technical Assistance to Communities

NJOEM | Not Started | MCB - 8

Continue the Resilient Communities Program

DCA | Ongoing | MCB - 9

Develop Green and Sustainable Remediation Guidance for Licensed Site Remediation Professionals

DEP | Completed | MCB - 10

Regional Planning (RP)

Continue Restoration of Meadowlands Habitats and Open Spaces

NJSEA | Underway | RP - 1

Incorporate Extreme Heat Risk and Opportunities into Agency Strategic Plans

NJSEA | Underway | RP - 2

Updating NJSEA's Master Plans and Guidelines to Incentivize Resilient Practices

NJSEA | Underway | RP - 3

Incorporate Extreme Heat into the Highlands Regional Master Plan Update

Highlands Council | Underway | RP - 4

Update to Highlands Land Use Ordinance

Highlands Council | Not Started | RP - 5

Incorporate Evaluation of Extreme Heat Prevention and Mitigation Strategies for Local Communities

Highlands Council | Not Started | RP - 6

Continue...

Regional Planning (RP)

Highlands Region Community Forestry Management Planning

Highlands Council | Not Started | RP - 7

Reduce and Disconnect Impervious Surfaces

Highlands Council | Underway | RP - 8

Expand NJ Highlands Water Use and Conservation Management Program

Highlands Council | Underway | RP - 9

Heat-Tolerant Native Pinelands Plant Species Guidebook

Pinelands Commission | Not Started | RP - 10

Urban Heat Islands (UHI)

Urban Cooling Pilot Program

DEP | Not Started | UHI - 1

Develop Heat Island Assessments and Action Strategy

DEP | Not Started | UHI - 2

Inform the Public on Reducing Energy Use

BPU | Ongoing | UHI - 3

Minimize Urban Heat Island Effect in Major Infrastructure Projects

DEP | Underway | UHI - 4

Encourage Redevelopment of Brownfields into Green Spaces

DEP | Underway | UHI - 4

Urban Tree Canopy and Community Forestry (UTC)

Expand Urban & Community Forestry Program Support & Technical Assistance in Overburdened Communities

DEP | Underway | UTC - 1

Leverage Federal Funds to Provide Sub-Grants for Urban & Community Forestry Efforts in Overburdened Communities

DEP | Underway | UTC - 2

Update the Community Forestry Management Plan Guidelines

DEP | Completed | UTC - 3

Analyze New Jersey's Urban Canopy

DEP | Underway | UTC - 4

Promote Urban Canopy on Private Property

DEP | Underway | UTC - 5

Recreation (REC)

Modify Green Acres Funding Requirements to Prioritize Climate and Heat Impact Mitigation

DEP | Ongoing | REC - 1

Continue Implementation of the Local Recreation Improvement Grant Program

DCA | Ongoing | REC - 2

Incorporate Cool Design Strategies in Parks

DEP | Not Started | REC - 3

Prevent Heat Illness During Equine Sporting Events

LPS | Completed | REC - 4

Priority 2: Strengthen the Resilience of New Jersey's Ecosystem

Priority 2: Strengthen the Resilience of New Jersey's Ecosystems	63
Agriculture (AG)	65
Ecosystems and Habitat (ECO)	69
Harmful Algal Blooms (HAB)	71



Agriculture (AG)

Promote Climate- Smart Practices

NJDA | Underway | AG - 1

Provide Localized Assistance, Planning, and Funding for Soil Conservation Districts

NJDA | Not Started | AG - 2

Revise the Conservation Cost Share Program Rules

NJDA | Underway | AG - 3

Launch a State-Specific Commercial Crop Breeding Program

NJDA | Not Started | AG - 4

Agriculture (AG, continued)

Communicate Practical Conservation for Livestock Producers Within Watersheds and Riparian Corridors

NJDA | Underway | AG - 5

Reduce Human Health Impacts Associated with Livestock Mortality

NJDA | Underway | AG - 6

Utilize and Share the Rutgers Urban Agriculture Report

NJDA | Completed | AG - 7

Ecosystems and Habitat (ECO)

Promote Forest Restoration and Preservation in the Highlands

Highlands Council | Underway | ECO - 1

Enhance Forest Resilience in Wildlife Management Areas

DEP | Not Started | ECO - 2

Remove Dams Where Appropriate

DEP | Underway | ECO - 3

Protect Coldwater Riparian Habitats

DEP | Underway | ECO - 4

Assess Baseline Species and Climatological Records

DEP | Not Started | ECO - 5

Harmful Algal Bloom (HAB)

Respond to the Impact of Harmful Algal Blooms on Recreation

DEP | Underway | HAB - 1

Protect Drinking Water Sources from HAB Impacts

DEP | Underway | HAB - 2

Empower Harmful Algal Blooms Research

DEP | Not Started | HAB - 3

Implement the DEP Water Infrastructure Implementation Plan

DEP | Ongoing | HAB - 4

Priority 3: Promote Coordinate Governance

Priority 3: Promote Coordinated Governance.....	75
Legal & Regulatory Affairs, Legislation & Advocacy (LRA)	77



Legal and Regulatory Affairs, Legislation and Advocacy (LRA)

Evaluate Amending Rules and Regulations Around Vegetative Mitigation

DEP | Underway | LRA - 1

Build Climate Resilience into Contaminated Site Remediation and Restoration Plans

DEP | Not Started | LRA - 2

Cooperate on Multistate Climate Change Policy and Litigation Advocacy

LPS | Underway | LRA - 3

Priority 4: Invest in Information and Increase Public Understanding

Priority 4: Invest in Information and Increase Public Understanding.....	79
Advance Scientific Understanding of Extreme Heat (ASU).....	81
Communications & Outreach (COM).....	84



Advance Scientific Understanding of Extreme Heat (ASU)

Conduct Temperature-Related Literature Reviews

DEP | Ongoing | ASU - 1

Ground Truth Surface Temperature Observations

DEP | Underway | ASU - 2

Monitor Changes in Surface Water Temperatures

DEP | Ongoing | ASU - 3

Assess Sea Surface Temperature Extremes

DEP | Not Started | ASU - 4

Advance Scientific Understanding of Extreme Heat (ASU, continued)

Study Offsite Runoff Effects on Trout Streams

DEP | Not Started | ASU - 5

Improve Understanding of Heat-Related Climate Vulnerability of Marine Resources

DEP | Ongoing | ASU - 6

Update New Jersey Climate Model Projections

DEP | Not Started | ASU - 7

Communications and Outreach (COM)

Develop a Cool Buddy Program

DHS | Not Started | COM - 1

Develop an Extreme Heat Resource Guide for Vulnerable Populations

DHS | Not Started | COM - 2

Develop Education Resources for Small Businesses

DOS | Not Started | COM - 3

Launch Meadowlands Climate Change and Heat Extremes Education Campaign

NJSEA | Underway | COM - 4

Communications and Outreach (COM, continued)

Conduct Extreme Heat Public Outreach to Veterans and Their Families

DMAVA | Underway | COM - 5

Expand Surveillance, Analysis, Tracking, and Publication of Heat-related Illness Data and Educational Resources

NJDOH | Underway | COM - 6

Launch Extreme Heat, Cool Communications Outreach Campaign

IAC | Underway | COM - 7

Leverage Social Media Communications for Visitors to State Parks, Forests & Historic Sites

DEP | Underway | COM - 8

Priority 5: Promote Climate-Informed Investments and Innovative Financing

Priority 5: Promote Climate-informed Investments and Innovative Financing....87
Funding Program Revisions and Financing (FF)..... 89



Funding Program Revisions and Financing (FF)

Continue Implementation of the Natural Climate Solutions Grant Program

DEP | Ongoing | FF - 1

Identify, Prioritize, and Incentivize Water Bank Projects that Incorporate Green Infrastructure

I-Bank / DEP | Not Started | FF - 2

Support Communities Using Transportation Set-Aside Funds for Shade Improvements

NJDOT | Underway | FF - 3

Launch a Multimodal Shade Tree Initiative

I-Bank / NJDOT | Not Started | FF - 4

Continue...

Funding Program Revisions and Financing (FF)

Develop Extreme Heat Underwriting Guidelines

HMFA | Not Started | FF - 5

Incorporate Extreme Heat Risk and Opportunities into Incentive Programs

NJEDA | Completed | FF - 6

Implement the Federal STORM Act

NJOEM | Not Started | FF - 7

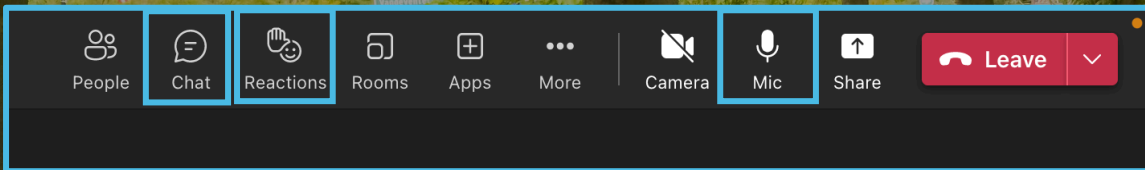
Identify Bidding, Services, and Contracting Opportunities to Prepare for Extreme Heat

IAC | Ongoing | FF - 8

Provide Emergency Resources to Small Businesses During Extreme Heat Events

NJEDA | Not Started | FF - 9

Share verbal feedback



We will now call on those who pre-registered to provide verbal comment during today's meeting.

If you wish to be added to the speaker list, you may:

- Use the "raise your hand" function if you would like to provide verbal comment.
- We will do our best to hear from as many people as we can during the available time.

We invite you to complete the online public form after this meeting at dep.nj.gov/climatechange/resilience/resilience-action-plans/ at any time before Monday, May 20, 2024.



60

40

20

wrap

Kindly keep your remarks to 1 minute or less.

The Interagency Council invites public feedback on the Draft Extreme Heat Resilience Action Plan by **Monday, May 20, 2024.**

Visit the website linked below:

dep.nj.gov/climatechange/resilience/resilience-action-plans/

