

6 SOLUTIONS TO Stormwater Pollution

Easy things you can do everyday to protect our water

A Guide to Healthy Habits for Cleaner Water

Stormwater pollution is New Jersey's greatest threat to clean water. Pollution and trash on streets, parking lots, and lawns gets washed directly into storm drains by rain, then into our drinking water supplies, and the ocean and lakes where we and our children swim and play. There are some simple, easy changes we can all make in our daily routines that will improve our waterways.



01.

Limit Fertilizer & Pesticide Use

- Hazardous products include some common cleaning items, lawn and garden care products, motor oil, antifreeze, and paints.
- Do not pour hazardous materials on the ground or down a storm drain as these are typically connected directly to local waterways, or they may pollute groundwater which flows to the waterways and could be used for well water.
- Ensure hazardous products are properly stored inside or in watertight containers so they don't get washed away and follow all directions on the labels for additional guidance.
- Use natural or less toxic alternatives when possible.
- Properly recycle used motor oil by collecting it in sealable containers and take to your town's or county's hazardous waste disposal facilities.

- Conduct a soil test using this link to see if your lawn need fertilizer: Soil Testing Laboratory (Rutgers' Cooperative Extension can help <https://njaes.rutgers.edu/soil-testing-lab/>)
- In accordance with the New Jersey Fertilizer Law, do not apply fertilizer between November 15 and March 1st ([NJDEP-Healthy Lawns Healthy Water](#)).
- Do not apply products if heavy rain is predicted within 48 hours so they don't get washed away before they get a chance to work or look into natural alternative options.
- Maintain a smaller lawn and let the remainder of your property grow native vegetation that doesn't need fertilizer or pesticides.
- During fertilizer use, carefully follow the label's instructions for correct application.
- Make sure products are properly stored inside or in watertight containers so they don't get washed away or appropriately discard any unused products.

02.

Properly handle hazardous products





03. Clean up after your pet

- Do not feed wildlife, such as ducks and geese, etc., in public areas as more food increases the number of excretions that can pollute stormwater and then our waterways.
- Many municipalities and other public agencies have ordinances in place to prohibit wildlife feeding in public places.



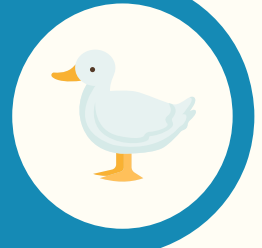
05. Don't Litter

- Keep leaves and grass out of the street so they don't get washed into waterways or down storm drains.
- Follow your municipality or agency's yard waste collection rules.
- Use leaves and grass clippings as a resource for compost.
- Use a mulching mower that recycles grass clippings into the lawn.

Contact Information

- Make sure you know your municipality's or agency's ordinances or requirements. Remember to:
 - Use newspaper, paper towels, bags, or pooper-scoopers to pick up waste.
 - Dispose of the wrapped pet waste in the trash, or dispose of the unwrapped pet waste in a toilet.
 - Never discard wrapped or unwrapped pet waste into a storm drain.

04. Don't feed wildlife



- Place all trash and litter in trash or recyclable receptacles.
- Store trash receptacles securely to prevent content loss by tipping, leaking, wildlife interaction, and weather.
- Please Recycle. Recycle. Recycle.
- Participate in community cleanups.

06. Properly dispose of yard waste



New Jersey Department of Environmental Protection
Bureau of NJPDES Stormwater Permitting at
StormwaterManager@dep.nj.gov or (609)-633-7021

or contact your county case manager directly via
<https://dep.nj.gov/njpdes-stormwater/municipal-stormwater-regulation-program/ms4-case-manager-list/>