

# NEW JERSEY PACT



## Protecting Against Climate Threats

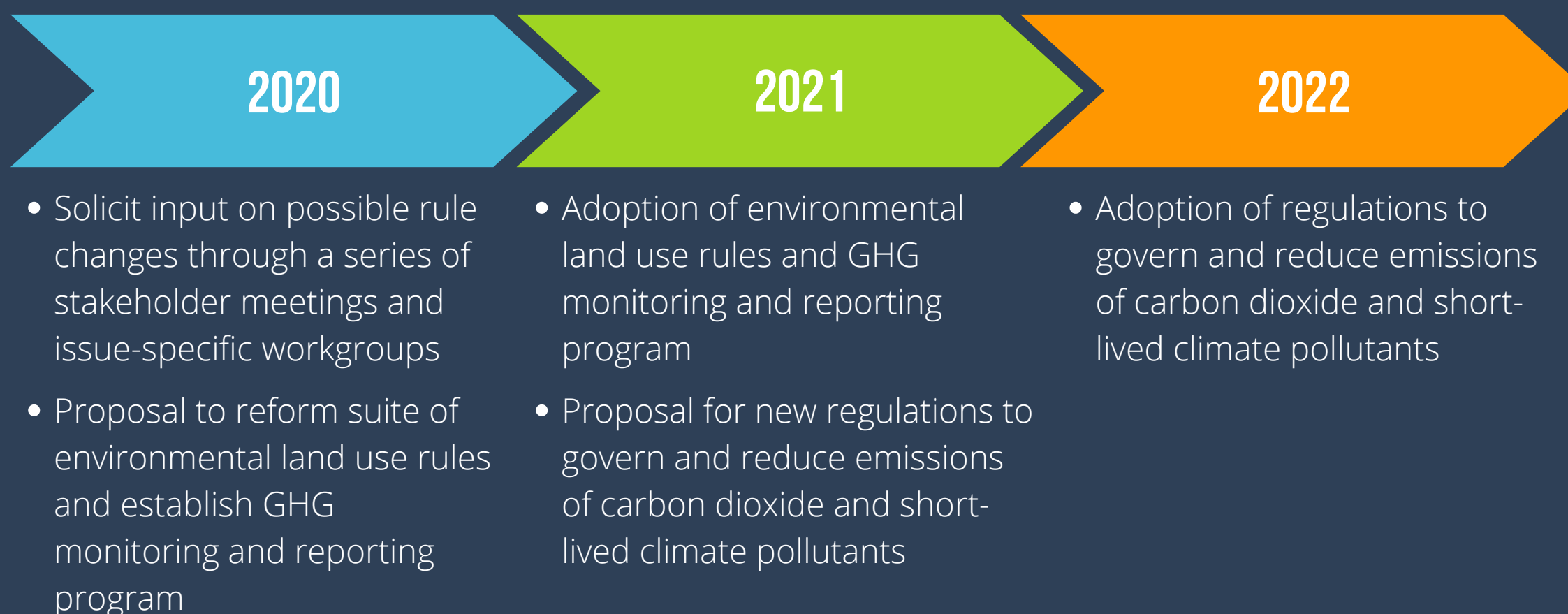
Climate change is the single biggest environmental challenge facing New Jersey. Our state is ground zero for rising sea levels, more intense storms and flooding, and rising temperature. The effects of climate change present real threats to New Jersey's economy, way of life, environment, and public health and safety. And, because adverse effects of climate change may disproportionately impact our most vulnerable communities, our responses to these threats must also promote environmental justice.

## What is NJPACT?

Under Governor Phil Murphy's Executive Order 100, the New Jersey Department of Environmental Protection (DEP) is reforming regulations that will help reduce greenhouse gas (GHG) emissions while making our natural and built environments more resilient to the impacts of climate change that we cannot avoid. These reforms represent a PACT with the residents of New Jersey to help them adapt to the reality of climate change. It is also a PACT across generations -- with our children and grandchildren -- to reduce further climate change damage so that they too may thrive and enjoy our great state. The first two PACT initiatives include:

1. Modernizing environmental land use rules to respond to climate change by considering risks such as sea level rise and chronic flooding, and to facilitate climate resilience by supporting green infrastructure and renewable energy.
2. Strengthening air pollution rules to help reduce future greenhouse gas emissions by improving the State's GHG reporting and inventory system and reducing emissions of carbon dioxide and short-lived climate pollutants from certain sources.

## PACT Regulatory Timeline



## NJPACT is just one of many DEP climate change initiatives.

In addition to the PACT rules, DEP is leading several climate change initiatives that will deliver the following reports in 2020:

- **Sea Level Rise Guidance for New Jersey** describes how sea level rise data can be used in making development decisions.
- **Global Warming Response Act 2050 Report** describes New Jersey's emissions profile by sector and identifies choices available to lawmakers and policymakers to ensure that New Jersey reaches the GWRA mandate of reducing emissions by 80% by 2050.
- **Scientific Report on Climate Change** summarizes data that illustrates how New Jersey experiences climate change.
- **Statewide Climate Change Resilience Strategy** presents a roadmap for reducing the impacts of climate change through adaptive policies that improve the resilience of New Jersey's economy, communities, infrastructure, and natural resources. A living document, the Strategy will respond to evolving science and provide guidance to State agencies, local government units and regional planning agencies. The strategy will also include a Coastal Resilience Plan to inform and guide the State's priorities, policies, regulations, resource allocation, and funding in the coastal zone.

## Lend your voice to climate action that supports your community.

- Stay informed about DEP's climate change initiatives by frequently visiting: <https://www.nj.gov/dep/climatechange/>.
- Submit your ideas for combatting climate threats on the NJPACT website at <https://www.nj.gov/dep/njpact/>.
- Follow DEP on Twitter and Facebook (@NewJerseyDEP) for the latest climate change information and ways for to get and stay involved.

