



New Jersey  
**NATURAL LANDS TRUST**

**AGENDA**

**NATURAL LANDS TRUST MEETING**

**March 25, 2022**

**Location: Via Video and Teleconference**

**Please contact [NatLands@dep.nj.gov](mailto:NatLands@dep.nj.gov) for teleconference information**

**12:00 PM**

- I. Statement of Open Public Meetings Act**
- II. Welcome and Introductions to new Trustees**
- III. General Public Comment**
- IV. Resolutions** – Theresa Lettman and John Cecil
- V. Financial Report**
  - Third and Fourth Quarter 2021 Financial Reports, for decision
- VI. Minutes**
  - September 24, 2021 Minutes, for decision
- VII. Unfinished Business**
  - Petty's Island, Pennsauken Township, Camden County, status update (no enclosure)
- VI. New Business**
  - Nominating Committee Recommendations for Chair, Vice Chair, Secretary/Treasurer Officers, for election, for decision (no enclosure)
  - Calendar Year 2022 Spending Authorization, for decision
  - Tennessee Gas Pipeline (TGP) Plant Fund-Calendar Year 2022 Annual Work Plan, for decision
  - Tennessee Gas Pipeline (TGP) Animal Fund- Timber Rattlesnake and Northern Copperhead Multi-Year Work Plan, for decision
  - Newbold Island-PSEG/GA Land Management Assignment Offer, Bordentown Township, Burlington County, for decision
  - Resolution Approving Sale of Three Pinelands Developments Credits (PDCs), for affirmation
  - Draft 2021 Annual Report Text, for decision (no enclosure)
- VII. Adjourn**



## RESOLUTION

*Whereas, The New Jersey Natural Lands Trust was created in 1969 as a unique agency to promote the preservation of biological diversity; and*

*Whereas, The Board of Trustees includes six members of the public nominated by the environmental community and appointed by the Governor; and*

*Whereas, Theresa Lettman has served with distinction as a public member of the Trust and its Secretary/Treasurer since 1995; and*

*Whereas, She has contributed sage counsel to the Trust on land preservation and excellent land stewardship especially with respect to Trust preserves within the New Jersey Pinelands; and*

*Whereas, Theresa has now been appointed to the New Jersey Pinelands Commission where she will continue to advocate for the preservation, protection, and enhancement of the unique natural and cultural resources of the Pinelands National Reserve;*

*NOW, THEREFORE, BE IT RESOLVED by the Board of the New Jersey Natural Lands Trust that:*

- 1. On this 25th day of March 2022, the Board hereby extends its heartfelt appreciation and best wishes to Theresa Lettman for her steadfast service above and beyond the call of duty to both the Trust and the overall cause of creating a system of nature preserves to protect the unique flora and fauna of the Garden State; and*
- 2. A duly authenticated copy of the Resolution, signed by the Chair and attested to by the Executive Director of the Trust, shall be transmitted to Theresa.*

  
Michael Catania, Chair

\_\_\_\_\_  
Robert J. Cartica, Executive Director



## RESOLUTION

*Whereas, The New Jersey Natural Lands Trust was created in 1969 as a unique agency to promote the preservation of biological diversity; and*

*Whereas, The Board of Trustees includes six members of the public nominated by the environmental community and appointed by the Governor; and*

*Whereas, John Cecil served with distinction as a public member of the Trust representing the New Jersey Audubon Society; and*

*Whereas, He has contributed sage counsel to the Trust on land preservation and excellent land stewardship especially with respect to habitat management and forest stewardship; and*

*Whereas, John has now been appointed as an Assistant Commissioner for the Department of Environmental Protection where he will continue to advocate for the preservation, protection, and enhancement of New Jersey's unique natural and cultural resources;*

*NOW, THEREFORE, BE IT RESOLVED by the Board of the New Jersey Natural Lands Trust that:*

- 1. On this 25th day of March 2022, the Board hereby extends its heartfelt appreciation and best wishes to John Cecil for his steadfast service above and beyond the call of duty to both the Trust and the overall cause of creating a system of nature preserves to protect the unique flora and fauna of the Garden State; and*
- 2. A duly authenticated copy of the Resolution, signed by the Chair and attested to by the Executive Director of the Trust, shall be transmitted to John.*

  
Michael Catania, Chair

\_\_\_\_\_  
Robert J. Cartica, Executive Director

THE NEW JERSEY NATURAL LANDS TRUST  
STATEMENT OF FINANCIAL POSITION  
SEPTEMBER 30, 2021

Statement 1

(See Accountant's Review Report)

	Without Donor Restrictions General Fund	With Donor Restrictions										TOTAL
		With Donor Restrictions General Fund	Hyponex	Petty's Island	Petty's Island Cultural	Shorebird	TGP Acquisition	TGP Animals	TGP Plants	Wetlands Acquisition	Wetlands Mitigation	
<b>ASSETS</b>												
Current Assets												
Cash and Cash Equivalents	\$ 2,666,025	\$ -	\$ 63,181	\$ 1,581,135	\$ 1,190,525	\$ 7,248	\$ 644,811	\$ 1,374,628	\$ 1,189,704	\$ 16,446	\$ 2,809,632	\$ 11,543,335
Tenants Escrow	3,044	-	-	-	-	-	-	-	-	-	-	3,044
Due to Bennett Bogs Endowment	-	10,625	-	-	-	-	-	-	-	-	-	10,625
Due to Hirst Pond Endowment	-	25,000	-	-	-	-	-	-	-	-	-	25,000
Due to Hainesville Wood Endowment	-	25,000	-	-	-	-	-	-	-	-	-	25,000
Due to Mackenzie's Bog/Montague	-	48,800	-	-	-	-	-	-	-	-	-	48,800
Due to Moorestown Acq Endowment	-	168,344	-	-	-	-	-	-	-	-	-	168,344
Due to Statewide Capital Projects	-	560,000	-	-	-	-	-	-	-	-	-	560,000
Due to Stevens Endowment	-	5,603	-	-	-	-	-	-	-	-	-	5,603
Due to Tree Frog Pond	-	1,228	-	-	-	-	-	-	-	-	-	1,228
Accrued Interest Receivable	-	-	-	-	-	-	-	-	-	-	-	0
<b>Total Current Assets</b>	<b>2,669,069</b>	<b>844,600</b>	<b>63,181</b>	<b>1,581,135</b>	<b>1,190,525</b>	<b>7,248</b>	<b>644,811</b>	<b>1,374,628</b>	<b>1,189,704</b>	<b>16,446</b>	<b>2,809,632</b>	<b>12,390,979</b>
Fixed Assets												
Land	-	36,020,829	-	-	-	-	-	-	-	-	-	36,020,829
Equipment	-	2,364	-	-	-	-	-	-	-	-	-	2,364
Vehicles	-	15,544	-	-	-	-	-	-	-	-	-	15,544
Accumulated Depreciation	-	(17,908)	-	-	-	-	-	-	-	-	-	(17,908)
<b>Total Fixed Assets</b>	<b>-</b>	<b>36,020,829</b>	<b>-</b>	<b>-</b>	<b>-</b>	<b>-</b>	<b>-</b>	<b>-</b>	<b>-</b>	<b>-</b>	<b>-</b>	<b>36,020,829</b>
Other Assets												
Investments-Long Term (FMV)	-	-	-	-	-	22,431	-	-	-	-	-	22,431
Due From Related Fund	3,343	-	-	92,605	-	-	-	-	-	-	-	95,948
<b>Total Other Assets</b>	<b>3,343</b>	<b>-</b>	<b>-</b>	<b>92,605</b>	<b>-</b>	<b>22,431</b>	<b>-</b>	<b>-</b>	<b>-</b>	<b>-</b>	<b>-</b>	<b>118,379</b>
<b>TOTAL ASSETS</b>	<b>\$ 2,672,412</b>	<b>\$ 36,865,429</b>	<b>\$ 63,181</b>	<b>\$ 1,673,740</b>	<b>\$ 1,190,525</b>	<b>\$ 29,679</b>	<b>\$ 644,811</b>	<b>\$ 1,374,628</b>	<b>\$ 1,189,704</b>	<b>\$ 16,446</b>	<b>\$ 2,809,632</b>	<b>\$ 48,530,187</b>
<b>LIABILITIES &amp; NET ASSETS</b>												
Liabilities												
Due To Related Fund	\$ 652,605	\$ -	\$ -	\$ 3,343	\$ -	\$ -	\$ -	\$ -	\$ -	\$ -	\$ -	\$ 655,948.00
Due to Endowment Account	284,600	-	-	-	-	-	-	-	-	-	-	284,600
Security Deposits Payable	2,792	-	-	-	-	-	-	-	-	-	-	2,792
<b>Total Liabilities</b>	<b>939,997</b>	<b>-</b>	<b>-</b>	<b>3,343</b>	<b>-</b>	<b>-</b>	<b>-</b>	<b>-</b>	<b>-</b>	<b>-</b>	<b>-</b>	<b>943,340</b>
Net Assets												
Without Donor Restrictions	1,732,415	-	-	-	-	-	-	-	-	-	-	1,732,415
With Donor Restrictions	-	36,865,429	63,181	1,670,397	1,190,525	29,680	644,811	1,374,628	189,704	16,446	2,809,632	44,854,433
Unrealized Gain/Loss	-	-	-	-	-	(1)	-	-	-	-	-	(1)
<b>Total Net Assets</b>	<b>1,732,415</b>	<b>36,865,429</b>	<b>63,181</b>	<b>1,670,397</b>	<b>1,190,525</b>	<b>29,679</b>	<b>644,811</b>	<b>1,374,628</b>	<b>189,704</b>	<b>16,446</b>	<b>2,809,632</b>	<b>46,586,847</b>
<b>TOTAL LIABILITIES &amp; NET ASSETS</b>	<b>\$ 2,672,412</b>	<b>\$ 36,865,429</b>	<b>\$ 63,181</b>	<b>\$ 1,673,740</b>	<b>\$ 1,190,525</b>	<b>\$ 29,679</b>	<b>\$ 644,811</b>	<b>\$ 1,374,628</b>	<b>\$ 189,704</b>	<b>\$ 16,446</b>	<b>\$ 2,809,632</b>	<b>\$ 47,530,187</b>

The accompanying notes are an integral part of the financial statements.

THE NEW JERSEY NATURAL LANDS TRUST  
STATEMENT OF ACTIVITIES AND NET ASSETS  
FOR THE NINE MONTH PERIOD ENDED  
SEPTEMBER 30, 2021

Statement 2

(See Accountant's Review Report)

	With Donor Restrictions											TOTAL
	Without Donor Restrictions General Fund	With Donor Restrictions General Fund	Hyponex	Petty's Island	Petty's Island Cultural	Shorebird	TGP Acquisition	TGP Animals	TGP Plants	Wetlands Acquisition	Wetlands Mitigation	
<b>Revenue (Restricted)</b>												
Contribution Income	\$ -	\$ -	\$ -	\$ 160,000	\$ -	\$ -	\$ -	\$ -	\$ -	\$ -	\$ 223,048	\$ 383,048
<b>Expense</b>												
Materials and Supplies	105	-	-	-	-	-	-	-	-	-	-	105
Services	4,866	-	-	-	-	-	-	-	-	-	-	4,866
Maintenance	6,576	-	-	-	-	-	-	-	-	-	-	6,576
Annual Report	-	-	-	-	-	-	-	-	-	-	-	-
Capital	-	-	-	-	-	-	-	-	-	-	-	-
Subaccount Expenses	-	226	-	-	-	-	-	-	-	-	-	226
Other Authorized Expenditures	-	-	-	23,396	-	31,000	-	-	-	-	187,488	241,884
Depreciation Expense	-	-	-	-	-	-	-	-	-	-	-	-
<b>Total Expenses</b>	<b>11,547</b>	<b>226</b>	<b>-</b>	<b>23,396</b>	<b>-</b>	<b>31,000</b>	<b>-</b>	<b>-</b>	<b>-</b>	<b>-</b>	<b>187,488</b>	<b>253,657</b>
<b>Other Income</b>												
Rent Income	20,150	-	-	-	-	-	-	-	-	-	-	20,150
Interest/Dividend Income	198	-	5	117	92	341	50	106	92	1	217	1,219
Miscellaneous Income	9,295	-	-	-	-	-	-	-	-	-	-	9,295
NonRecurring Land Sale	-	-	-	-	-	-	-	-	-	-	-	-
<b>Total Other Income</b>	<b>29,643</b>	<b>-</b>	<b>5</b>	<b>117</b>	<b>92</b>	<b>341</b>	<b>50</b>	<b>106</b>	<b>92</b>	<b>1</b>	<b>217</b>	<b>30,664</b>
<b>Excess Revenues Over Expenses/ Excess (Expenses) Over Revenues</b>	<b>\$ 18,096</b>	<b>\$ (226)</b>	<b>\$ 5</b>	<b>\$ 136,721</b>	<b>\$ 92</b>	<b>\$ (30,659)</b>	<b>\$ 50</b>	<b>\$ 106</b>	<b>\$ 92</b>	<b>\$ 1</b>	<b>\$ 35,777</b>	<b>\$ 160,055</b>
<b>Net Asset Balance January 1, 2021</b>	<b>\$ 1,714,319</b>	<b>\$ 36,865,655</b>	<b>\$ 63,176</b>	<b>\$ 1,533,676</b>	<b>\$ 1,190,433</b>	<b>\$ 61,016</b>	<b>\$ 644,761</b>	<b>\$ 1,374,522</b>	<b>\$ 1,189,612</b>	<b>\$ 16,445</b>	<b>\$ 2,773,855</b>	<b>\$ 47,427,470</b>
Land Acquisition	-	-	-	-	-	-	-	-	-	-	-	-
Unrealized Loss/Gain	-	-	-	-	-	(677)	-	-	-	-	-	(677)
Inter Fund Transfer	-	-	-	-	-	-	-	-	-	-	-	-
<b>Net Asset Balance Sept 31, 2021</b>	<b>\$ 1,732,415</b>	<b>\$ 36,865,429</b>	<b>\$ 63,181</b>	<b>\$ 1,670,397</b>	<b>\$ 1,190,525</b>	<b>\$ 29,680</b>	<b>\$ 644,811</b>	<b>\$ 1,374,628</b>	<b>\$ 1,189,704</b>	<b>\$ 16,446</b>	<b>\$ 2,809,632</b>	<b>\$ 47,586,848</b>

The accompanying notes are an integral part of the financial statements.

THE NEW JERSEY NATURAL LANDS TRUST  
STATEMENT OF FINANCIAL POSITION  
DECEMBER 31, 2021

Statement 1

(See Accountant's Review Report)

	Without Donor Restrictions General Fund	With Donor Restrictions										
	With Donor Restrictions General Fund	Hyponex	Petty's Island	Petty's Island Cultural	Shorebird	TGP Acquisition	TGP Animals	TGP Plants	Wetlands Acquisition	Wetlands Mitigation	TOTAL	
ASSETS												
Current Assets												
Cash and Cash Equivalents	\$ 2,687,033	\$ -	\$ 63,183	\$ 1,581,175	\$ 1,190,555	\$ 7,248	\$ 644,827	\$ 1,374,663	\$ 1,179,734	\$ 16,446	\$ 2,556,007	\$ 11,300,871
Tenants Escrow	3,044	-	-	-	-	-	-	-	-	-	-	3,044
Due to Bennett Bogs Endowment	-	10,625	-	-	-	-	-	-	-	-	-	10,625
Due to Hirst Pond Endowment	-	25,000	-	-	-	-	-	-	-	-	-	25,000
Due to Hainesville Wood Endowment	-	25,000	-	-	-	-	-	-	-	-	-	25,000
Due to Mackenzie's Bog/Montague	-	48,800	-	-	-	-	-	-	-	-	-	48,800
Due to Moorestown Acq Endowment	-	168,344	-	-	-	-	-	-	-	-	-	168,344
Due to Statewide Capital Projects	-	560,000	-	-	-	-	-	-	-	-	-	560,000
Due to Stevens Endowment	-	5,603	-	-	-	-	-	-	-	-	-	5,603
Due to Tree Frog Pond	-	1,228	-	-	-	-	-	-	-	-	-	1,228
Accrued Interest Receivable	-	-	-	-	-	-	-	-	-	-	-	0
Total Current Assets	2,690,077	844,600	63,183	1,581,175	1,190,555	7,248	644,827	1,374,663	1,179,734	16,446	2,556,007	12,148,515
Fixed Assets												
Land	-	36,020,829	-	-	-	-	-	-	-	-	-	36,020,829
Equipment	-	2,364	-	-	-	-	-	-	-	-	-	2,364
Vehicles	-	15,544	-	-	-	-	-	-	-	-	-	15,544
Accumulated Depreciation	-	(17,908)	-	-	-	-	-	-	-	-	-	(17,908)
Total Fixed Assets	-	36,020,829	-	-	-	-	-	-	-	-	-	36,020,829
Other Assets												
Investments-Long Term (FMV)	-	-	-	-	-	22,299	-	-	-	-	-	22,299
Due From Related Fund	-	-	-	46,605	-	-	-	-	-	-	-	46,605
Total Other Assets	-	-	-	46,605	-	22,299	-	-	-	-	-	68,904
TOTAL ASSETS	\$ 2,690,077	\$ 36,865,429	\$ 63,183	\$ 1,627,780	\$ 1,190,555	\$ 29,547	\$ 644,827	\$ 1,374,663	\$ 1,179,734	\$ 16,446	\$ 2,556,007	\$ 48,238,248
LIABILITIES & NET ASSETS												
Liabilities												
Due To Related Fund	\$ 606,605	\$ -	\$ -	\$ -	\$ -	\$ -	\$ -	\$ -	\$ -	\$ -	\$ -	\$ 606,605.00
Due to Endowment Account	284,600	-	-	-	-	-	-	-	-	-	-	284,600
Security Deposits Payable	2,792	-	-	-	-	-	-	-	-	-	-	2,792
Total Liabilities	893,997	-	-	-	-	-	-	-	-	-	-	893,997
Net Assets												
Without Donor Restrictions	1,796,080	-	-	-	-	-	-	-	-	-	-	1,796,080
With Donor Restrictions	-	36,865,429	63,183	1,627,780	1,190,555	29,855	644,827	1,374,663	1,179,734	16,446	2,556,007	45,548,479
Unrealized Gain/Loss	-	-	-	-	-	(308)	-	-	-	-	-	(308)
Total Net Assets	1,796,080	36,865,429	63,183	1,627,780	1,190,555	29,547	644,827	1,374,663	1,179,734	16,446	2,556,007	47,344,251
TOTAL LIABILITIES & NET ASSETS	\$ 2,690,077	\$ 36,865,429	\$ 63,183	\$ 1,627,780	\$ 1,190,555	\$ 29,547	\$ 644,827	\$ 1,374,663	\$ 1,179,734	\$ 16,446	\$ 2,556,007	\$ 48,238,248

The accompanying notes are an integral part of the financial statements.

THE NEW JERSEY NATURAL LANDS TRUST  
STATEMENT OF ACTIVITIES AND NET ASSETS  
FOR THE YEAR ENDED  
DECEMBER 31, 2021

Statement 2

(See Accountant's Review Report)

	With Donor Restrictions											TOTAL
	Without Donor Restrictions General Fund	With Donor Restrictions General Fund	Hyponex	Petty's Island	Petty's Island Cultural	Shorebird	TGP Acquisition	TGP Animals	TGP Plants	Wetlands Acquisition	Wetlands Mitigation	
<b>Revenue (Restricted)</b>												
Contribution Income	\$ -	\$ -	\$ -	\$ 195,000	\$ -	\$ -	\$ -	\$ -	\$ -	\$ -	\$ 270,575	\$ 465,575
<b>Expense</b>												
Materials and Supplies	372	-	-	-	-	-	-	-	-	-	-	372
Services	6,947	-	-	-	-	-	-	-	-	-	-	6,947
Maintenance	24,736	-	-	-	-	-	-	-	-	-	-	24,736
Annual Report	-	-	-	-	-	-	-	-	-	-	-	-
Capital	-	-	-	-	-	-	-	-	-	-	-	-
Subaccount Expenses	-	226	-	-	-	-	-	-	-	-	-	226
Other Authorized Expenditures	-	-	-	23,396	-	31,000	-	-	10,000	-	488,707	553,103
Depreciation Expense	-	-	-	-	-	-	-	-	-	-	-	-
<b>Total Expenses</b>	<b>32,055</b>	<b>226</b>	<b>-</b>	<b>23,396</b>	<b>-</b>	<b>31,000</b>	<b>-</b>	<b>-</b>	<b>10,000</b>	<b>-</b>	<b>488,707</b>	<b>585,384</b>
<b>Other Income</b>												
Rent Income	26,600	-	-	-	-	-	-	-	-	-	-	26,600
Interest/Dividend Income	263	-	7	157	122	515	66	141	122	1	284	1,678
Miscellaneous Income	9,296	-	-	-	-	-	-	-	-	-	-	9,296
NonRecurring Land Sale	-	-	-	-	-	-	-	-	-	-	-	-
<b>Total Other Income</b>	<b>36,159</b>	<b>-</b>	<b>7</b>	<b>157</b>	<b>122</b>	<b>515</b>	<b>66</b>	<b>141</b>	<b>122</b>	<b>1</b>	<b>284</b>	<b>37,574</b>
<b>Excess Revenues Over Expenses/ Excess (Expenses) Over Revenues</b>	<b>\$ 4,104</b>	<b>\$ (226)</b>	<b>\$ 7</b>	<b>\$ 171,761</b>	<b>\$ 122</b>	<b>\$ (30,485)</b>	<b>\$ 66</b>	<b>\$ 141</b>	<b>\$ (9,878)</b>	<b>\$ 1</b>	<b>\$ (217,848)</b>	<b>\$ (82,235)</b>
<b>Net Asset Balance January 1, 2021</b>	<b>\$ 1,714,319</b>	<b>\$ 36,865,655</b>	<b>\$ 63,176</b>	<b>\$ 1,533,676</b>	<b>\$ 1,190,433</b>	<b>\$ 61,016</b>	<b>\$ 644,761</b>	<b>\$ 1,374,522</b>	<b>\$ 1,189,612</b>	<b>\$ 16,445</b>	<b>\$ 2,773,855</b>	<b>\$ 47,427,470</b>
Land Acquisition	-	-	-	-	-	-	-	-	-	-	-	-
Unrealized Loss/Gain	-	-	-	-	-	(984)	-	-	-	-	-	(984)
Inter Fund Transfer	77,657	-	-	(77,657)	-	-	-	-	-	-	-	-
<b>Net Asset Balance Dec 31, 2021</b>	<b>\$ 1,796,080</b>	<b>\$ 36,865,429</b>	<b>\$ 63,183</b>	<b>\$ 1,627,780</b>	<b>\$ 1,190,555</b>	<b>\$ 29,547</b>	<b>\$ 644,827</b>	<b>\$ 1,374,663</b>	<b>\$ 1,179,734</b>	<b>\$ 16,446</b>	<b>\$ 2,556,007</b>	<b>\$ 47,344,251</b>

The accompanying notes are an integral part of the financial statements.

**MINUTES OF THE  
NATURAL LANDS TRUST MEETING  
September 24, 2021  
12:00 PM  
Via Video and Teleconference**

Chairman Catania called the meeting to order at 12:01 PM. A quorum of trustees was present. At least one of the trustees was a state governmental representative.

The Open Public Meetings Act notice was provided as follows: Notice of the date, time, location, and agenda, to the extent known, was forwarded to three newspapers of general circulation, and provided to the Secretary of State in accordance with the Open Public Meetings Act. In addition, notice was provided on the Trust's website in compliance with the Act requiring State, regional, and local authorities, boards, and commissions to establish a website providing specific information to facilitate transparency in government.

*In attendance were:*

Michael Catania, Chairperson  
Anne Heasley, Vice Chairperson  
Senator Bob Smith, State House  
Commission representative, Trustee  
Judeth Yeany, DEP Trustee  
Larry Torok, DEP Trustee  
Emile DeVito, Trustee

Robert Jackson, Trustee  
Hannah Good, Trustee representative for the  
State Treasurer  
Marlen Dooley, Trustee representative for  
the DEP Commissioner  
Robert J. Cartica, Executive Director  
Martin Rapp, Trust Staff  
Cari Wild, Trust Staff  
Terry Schmidt, Trust Staff

*Absent:*

Theresa Lettman, Trustee/Secretary-  
Treasurer

*Guests:* None.

**Welcome and Introductions to new Trustees**

New Trustees Anne Heasley and Robert Jackson were introduced and welcomed.

**General Public Comment:**

Mr. Catania presented the **Resolutions** thanking and recognizing Steve Eisenhower and Martin Rapp for their many years of service to the Trust for approval. Senator Smith motioned for Mr. Eisenhower's Resolution to be approved. Mr. DeVito seconded the motion, and the resolution was approved by a unanimous vote of 9 to 0. Mr. DeVito motioned for Mr. Rapp's Resolution to be approved. Mr. Torok seconded the motion, and the resolution was approved by a unanimous vote of 9 to 0.



**Financial Report:** Mr. Cartica outlined the Financial Statements for the quarters ending March 31 and June 30, 2021. Mr. Jackson motioned to approve the Financial Statements. Ms. Yeany seconded the motion, and the Financial Statements were unanimously approved by a vote of 9 to 0.

The **March 5, 2021 minutes** were reviewed. Senator Smith motioned to approve the minutes. Ms. Yeany seconded the motion, and the minutes were approved by a vote of 6 to 0, with Ms. Dooley, Ms. Heasly, and Mr. Jackson abstaining.

### **Unfinished Business:**

Mr. Catania and Ms. Wild provided the Board with a **Petty's Island, Pennsauken Township, Camden County Status Report**. In November 2020, the William Penn Foundation awarded the Trust with a two-year \$70,000 grant to continue environmental educational programming at Petty's Island. The final year of the Trust's contract with NJ Audubon Society to provide this programming was 2021. In June 2021, the Trust rebid the contract. The Trust received proposals from two qualified educational programming contractors with one proposal \$15,000 per year more than the other. The Trust award the contract to the low qualified bidder, the Center for Aquatic Sciences (CAS), on the same basis of the two prior contracts, with it being a one-year contract with four one-year renewal options. CAS is very familiar with Petty's Island because it has been doing programming there over the past few years under grant funding provided to Discover the Delaware, of which the Trust is a member, through the National Fish and Wildlife Federation.

Michael Catania and Cari Wild met with DEP Deputy Commissioner Sean Moriarty on Petty's Island site remediation issues on August 19, 2021. Deputy Commissioner Moriarty will be scheduling a follow up meeting with the Trust, the DEP Site Remediation Program, CITGO Petroleum Company, and its Licensed Site Remediation Professional (LSRP) in the next month.

### **New Business:**

Ms. Yeany motion to nominate Anne Heasly for Vice Chairperson. Mr. DeVito seconded the motion, and the motion was unanimously approved by a vote of 9 to 0.

### **Trust Transitions**

Mr. Cartica outlined the steps being taken to address Mr. Rapp's retirement on October 1, 2021. Mr. Cartica expressed that a lateral transfer within DEP is our best opportunity to backfill the position. He introduced Ms. Terry Schmidt, who in addition to her duties for the State Park Service, will be serving as the Trust land manager for South Jersey while the Trust seeks to backfill the position. He noted that the Trust is seeking to regionalize the position since Trust preserves extend from Montague Township in Sussex County to Lower Township in Cape May County, which is too large an area for one land manager. The Trust used to receive an appropriation in the annual State Budget supporting three full-time Trust positions. Currently the Trust has no state budget appropriation and relies on DEP positions for support. Mr. DeVito added that he has worked well with Ms. Schmidt over the years and is excited for her to be joining the Trust.

The last scheduled 2021 Board meeting is December 3, 2021.

Mr. Jackson motioned for the meeting to be adjourned. Mr. DeVito seconded the motion, and the meeting was adjourned at 12:45 PM by a unanimous vote of 9 to 0.

Respectfully submitted,

Theresa Lettman  
Secretary/Treasurer



**NEW JERSEY NATURAL LANDS TRUST  
SPENDING AUTHORIZATION FOR  
CALENDAR YEAR 2022**

	<u>2021 Authorization</u>	<u>2021 Expenditure</u>	<u>2022 Authorization</u>
<b>MATERIALS AND SUPPLIES</b>	<b>\$2,000</b>	<b>\$372</b>	<b>\$2,000</b>

**General Printing, Office Supplies and Mail Services - \$2,000**

Includes routine office supplies, photocopying, reference materials and publications, maps and reproduction of maps, creating signage, and similar expenses. Production and printing of the Annual Report is not included under this category. If needed, this item will fund additional functions for outreach and volunteers for management and acquisition.

<b>SERVICES</b>	<b>\$23,700</b>	<b>\$6,947</b>	<b>\$23,700</b>
-----------------	-----------------	----------------	-----------------

**Travel - \$700**

Includes funds for refreshments for Board meetings, travel and parking reimbursement for meetings of Board of Trustees, and staff reimbursement for occasional use of personal vehicles.

**Information Processing - \$1,000**

Includes computer repairs and purchase of software.

**DAG Expenses – \$7,000**

Includes charges assessed to the Trust for professional services provided by staff of the Attorney General's office.

**Other Professional Services - \$15,000**

Includes cost of professional accounting services, maintenance of the Trust's website, title searches and filing fees for land donations, legal advertisement of Board of Trustees meeting dates, membership fees and bank service charges. Also includes routine professional service contracts for surveys and preparation of deeds. Minimal back taxes are included as part of this line; however, substantial tax payments will be included in each offering brought to the Board.

	<u>2021 Authorization</u>	<u>2021 Expenditure</u>	<u>2022 Authorization</u>
<b>MAINTENANCE AND FIXED CHARGES</b>	<b>\$55,000</b>	<b>\$24,736</b>	<b>\$55,000</b>

**General Maintenance of Buildings, Grounds, Equipment and Vehicle - \$30,000**

Includes funds for maintenance of rental units (including furnace or roof replacement, road regrading, power restoration, and other emergency measures), gates and access, safety/stabilization needs, tree trimming and removal, dumpster rental, encroachment surveys, etc., as needed. Major maintenance and capital improvement projects not included within this authorization will be submitted individually, together with a recommended funding source, to the Board for consideration. Likely 2022 maintenance projects include the following:

Hamilton Preserve maintenance - \$10,000

**Conservation/Preserve Management Projects - \$25,000**

The following planned projects are relevant to the Trust's mission of preservation of biodiversity. The costs for each project are gross estimates and quotes have not yet been sought. Additional projects may be added up to total of \$25,000:

Bear Swamp at Red Lion Preserve - Biodiversity inventory work on new additions	\$7,500
Hardwick Meadows Preserve - Annual northern metalmark survey	\$600
Petty's Island Preserve - dragonfly and damselfly survey	\$2,000

<b>ANNUAL REPORT</b>	<b>\$500</b>	<b>\$0</b>	<b>\$500</b>
----------------------	--------------	------------	--------------

**Annual Report - \$500**

The requested authorization includes the cost of graphic layout and development of the annual report for posting on the Trust's website.

<b>CAPITAL</b>	<b>\$2,500</b>	<b>\$0</b>	<b>\$2,500</b>
----------------	----------------	------------	----------------

**Miscellaneous Equipment Purchase and Replacement - \$2,500**

This budget allows for miscellaneous small equipment and supply purchases used for land management and office function.


---

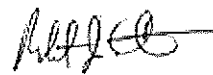
<b>TOTAL 2022 SPENDING AUTHORIZATION</b>	<b>\$83,700</b>	<b>\$32,055</b>	<b>\$83,700</b>
--	-----------------	-----------------	-----------------



The New Jersey  
NATURAL LANDS TRUST

**To:** John Cecil, Assistant Commissioner  
State Parks, Forests and Historic Sites

**Through:** John Sacco, Assistant Director/State Forester   
New Jersey Forest Service

**From:** Robert J. Cartica, Executive Director   
New Jersey Natural Lands Trust

**Date:** March 4, 2022

**Subject:** TGP Plant Fund - Annual Work Plan for Calendar Year 2022

A 2015 five-year Memorandum of Agreement (MOA), extended for an additional five years in 2019, between the Division of Parks and Forestry (Division), and the New Jersey Natural Lands Trust (Trust) outlines procedures for the transfer and management of mitigation funds received by the Division from the Tennessee Gas Pipeline Company, LLC and transferred from the Division to the Trust (TGP Plant Fund).

The MOA requires that no later than March 1 of each year the Division shall provide to the Trust an Annual Work Plan and a certification signed by the Division Director for disbursements from the TGP Plant Fund during the calendar year. Enclosed for your review and approval is a 2022 Annual Work Plan and certification form authorizing TGP Plant Fund expenditures totaling \$75,000 which will be presented to the Board of Trustees of the Trust at its annual financial meeting scheduled for March 25, 2022.

Please sign and date the enclosed expenditure certification if you approve of the CY22 Annual Work Plan and TGP Plant Fund disbursement.

Enclosure

c: Robin Madden

## **TGP Plant Fund - Annual Work Plan for Calendar Year 2022**

**Division of Parks and Forestry**

**March 4, 2022**

**The Division of Parks and Forestry (Division) authorizes the following expenditures from the New Jersey Natural Lands Trust's Tennessee Gas Pipeline (TGP) Plant Fund during Calendar Year 2022:**

**Deer Exclosure Demonstration Project in State Park(s) Impacted by TGP Upgrades - \$60,000.00:** Research has demonstrated that white tailed deer densities are a significant threat to forest health and populations of endangered plant species and plant species of concern. This funding is requested to research, plan, purchase materials, conduct baseline monitoring, install and maintain white tailed deer exclosures, and perform follow-up monitoring and adaptive management at selected locations in the following four State Parks impacted by TGP upgrades: High Point, Ringwood, Ramapo Mountain and Long Pond Ironworks. This project may be initiated in 2022 or in subsequent years and will likely be implemented by one or more contractors through competitive bids.

**General Rare Plant Species Research and Recovery - \$15,000.00:** Disbursement is requested for rare plant species research, survey, monitoring and management activities identified and conducted during the calendar year. This may include rare plant species Recovery Plan development and implementation, as well as other needs that may arise.

**Estimated Total Budget: \$75,000**



NEW JERSEY NATURAL LANDS TRUST  
CERTIFICATION FOR TRUST EXPENSES

VENDOR NAME:

INVOICE NUMBER: N/A

**GENERAL FUND:**

**Materials and Supplies**

General Printing/Office Supplies [ ]

Clothing/Volunteer Materials [ ]

**Maintenance and Fixed Charges**

General Maintenance [ ]

Major Project [ ]

**Services Other Than Personnel**

Travel [ ]

Information Processing [ ]

DAG Charges [ ]

Professional Services [ ]

**Annual Report** [ ]

**Capital** [ ]

**OTHER FUND:**

[ ]

**Shorebird Fund**

ENSP [ ]

Conserve Wildlife [ ]

Wetlands Mitigation Fund [ ]

Wetlands Mit. Acq. Fund [ ]

Real Property [ ]

Acquisition Cost [ ]

**Other Fund: TGP Plant Fund**

ITEM	COST
Cost for implementation of Calendar Year 2022 Annual Work Plan projects to be funded using the Tennessee Gas Pipeline (TGP) Plant Fund	\$75,000.00
	\$75,000.00

I certify that the goods or services described above will be used in accordance with the enclosed 2022 Annual Work Plan.

Signature

Date

3/10/22

AUTHORIZATION NUMBER: \_\_\_\_\_

CHECK NUMBER: \_\_\_\_\_ CREDIT CARD: ☐

DISBURSEMENT APPROVAL: \_\_\_\_\_

DATE OF DISBURSEMENT: \_\_\_\_\_

DATE OF COMPUTER ENTRY: \_\_\_\_\_

DATE CHECK MAILED: \_\_\_\_\_



# State of New Jersey

## DEPARTMENT OF ENVIRONMENTAL PROTECTION

### FISH AND WILDLIFE

P.O. BOX 420, MAIL CODE 501-03  
TRENTON, NEW JERSEY 08625-0420  
Tel. (609) 292-2965 • Fax (609) 984-1414

VISIT OUR WEBSITE: [WWW.NJFISHANDWILDLIFE.COM](http://WWW.NJFISHANDWILDLIFE.COM)

**PHILIP D. MURPHY**  
*Governor*

**SHAWN M. LATOURETTE**  
*Commissioner*

**SHEILA Y. OLIVER**  
*Lt. Governor*

**TO:** Bob Cartica, Executive Director, NJ Natural Lands Trust  
**THROUGH:** John Heilferty, Chief, Endangered and Nongame Species Program  
**FROM:** Kris Schantz, Principal Zoologist, Endangered and Nongame Species Program  
**RE:** Amendment to Multi-year Funding Request for Eastern Copperhead Research  
**DATE:** February 18, 2022  
**CC:** Kathy Clark

---

In January 2022, the Endangered and Nongame Species Program (ENSP) had submitted a request and supporting documents (per our MOU) for the release of \$870,000 from the Tennessee Gas Pipeline Animal Fund being held in trust by the Natural Lands Trust. The January request proposed the ENSP will use \$500,000 for two grants focused on eastern copperhead (formerly northern copperhead, *Agkistrodon contortrix mokasen*) at a maximum of \$250,000 each and an additional \$370,000 for a contract with Rutgers University.

Having recently received guidance from the DEP's Office of Legal Affairs, Robert Guzek, regarding the grant opportunity, the ENSP would like to amend our proposal regarding the requested \$500,000 for grant funding. Instead of limiting the ENSP to award two (2) grants at a maximum of \$250,000 each, we would like to broaden the opportunity by simply using the \$500,000 for one or more grants based on the proposed projects' merits.

According to our MOU, the ENSP must submit approved meeting minutes from the Endangered and Nongame Species Advisory Committee (ENSAC) regarding the use of these funds. While ENSAC was presented with and approved the use of funds for the originally proposed grants and contract, we believe the intent of their approval was not focused on the number of grants to be awarded but rather the objectives of the projects and the total available funds to be used.

Attached please find the revised proposal. Please note, the ENSP also added a suggestion to the second paragraph regarding the potential delay in releasing the funds.

Thank you for your assistance in this matter. If you have any further questions, please contact John Heilferty (609-292-9101; [john.heilferty@dep.nj.gov](mailto:john.heilferty@dep.nj.gov)) or Kris Schantz (908-713-1734; [kris.schantz@dep.nj.gov](mailto:kris.schantz@dep.nj.gov)).





NEW JERSEY NATURAL LANDS TRUST  
CERTIFICATION FOR TRUST EXPENSES

VENDOR NAME:

INVOICE NUMBER: N/A

**GENERAL FUND:**

**Materials and Supplies**

General Printing/Office Supplies ☐  
Clothing/Volunteer Materials ☐

**Maintenance and Fixed Charges**

General Maintenance ☐  
Major Project ☐

**Services Other Than Personnel**

Travel ☐  
Information Processing ☐  
DAG Charges ☐  
Professional Services ☐

**Annual Report** ☐

**Capital** ☐

**OTHER FUND:**

☐

**Shorebird Fund**

ENSP ☐  
Conserve Wildlife ☐  
Wetlands Mitigation Fund ☐

Wetlands Mit. Acq. Fund ☐

Real Property ☐

Acquisition Cost ☐

**Other Fund: TGP Animal Fund** ☒

**ITEM**

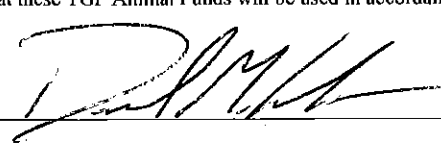
**COST**

Release of funds in Calendar Year 2022 for Multi-year Work Plan  
beginning in Calendar Year 2022 to be funded using the Tennessee  
Gas Pipeline (TGP) Animal Fund for Timber rattlesnake and/or  
Northern Copperhead Research.

\$ 870,000.00

\$ 870,000.00

I certify that these TGP Animal Funds will be used in accordance with the attached multi-year workplan.

Signature: 

Date: 12/20/21

AUTHORIZATION NUMBER: \_\_\_\_\_

CHECK NUMBER: \_\_\_\_\_

CREDIT CARD: ☐

DISBURSEMENT APPROVAL: \_\_\_\_\_

DATE OF DISBURSEMENT: \_\_\_\_\_

DATE OF COMPUTER ENTRY: \_\_\_\_\_

DATE CHECK MAILED: \_\_\_\_\_

# **TGP Skylands Timber Rattlesnake and Northern Copperhead Fund Multi-year Work Plan beginning Calendar Year 2022**

## **Division of Fish and Wildlife**

February 18, 2022

**The Division of Fish and Wildlife (Division) authorizes the release of the following funds to the Division's Endangered and Nongame Species Program (ENSP) from the New Jersey Natural Lands Trust's Tennessee Gas Pipeline "Animal Fund" (Skylands Timber Rattlesnake and Northern Copperhead Fund) during Calendar Year 2022 to pursue much-needed eastern copperhead (*Agkistrodon contortrix*, formerly northern copperhead; state SC, candidate-T) research to help direct regulatory decisions and conservation strategies.**

We request Natural Lands Trust (NLT) works with Steve Matis (Treasury) and the ENSP to set up an account to hold these funds in obligation for timber rattlesnake and eastern copperhead conservation efforts. It may be prudent to delay the transfer of such funds until approximately August 2022 *if* such a delay will not prohibit the development of the Rutgers contract. NLT, Treasury and ENSP would need to discuss this further.

These projects aim to fulfill "Research" actions in the "Reptile and Amphibian Management Plan for the New Jersey Skylands Region with a focus on Timber Rattlesnakes (*Crotalus horridus*) and Northern Copperheads (*Agkistrodon contortrix mokasen*)" (January 2015), specifically:

- Surveys and assessments of habitats and critical habitat features necessary to meet life history requirements. Monitor managed habitats to determine use; focus maintenance on those showing success.

### **New Jersey Skylands Region Timber Rattlesnake and Northern Copperhead Grant - Northern Copperhead Survey Technique Development and Assessment - \$500,000:**

The Division's Endangered and Nongame Species Program (ENSP) will solicit proposals to develop and test the efficacy of survey techniques to identify northern copperhead critical habitat features (i.e., dens, rookeries and/or gestation sites). The ENSP will administer one or more grants as determined by the ENSP technical review committee. The project period is a maximum of five years from the Grant Agreement's start date. It is the ENSP's intention that monies not awarded through this grant process will remain in a state account for the ENSP to direct to additional research on and/or conservation strategies for Skylands northern copperheads and/or timber rattlesnakes. An ENSP technical review committee will review and score/rank the proposals based on the identified ranking criteria.

The Division requests a one-time release of the funds to enable us (and Treasury) to work with the cooperating grantees to develop suitable and timely payment schedules.

**Northern Copperhead Radio-telemetry Research - \$ 370,000:** This funding is requested for the Division to contract Rutgers University (Dr. Brooke Maslo and Tyler Christensen, PhD Candidate) to conduct a multi-year, radio-telemetry study on a northern population of northern copperheads. The research will focus on documenting and analyzing habitat use and selection for

various life history requirements at both the macro- and micro-habitat scale, activity ranges and annual range shifts, dispersal distances from winter dens, habitat characterization of winter dens (and if possible, gestation sites and/or birthing rookeries), and to conduct a comparative analysis with an isolated population in Mercer County to assess if and what differences occur between these two metapopulations. Such a comparison will inform the Division of any changes to our environmental review process and/or conservation efforts that must be made.

The Division requests a one-time release of the funds to enable us to work with Rutgers University to develop a suitable and timely payment schedule.

**Estimated Total Budget:** \$870,000

**Endangered and Nongame Species Advisory Committee**  
**Meeting Minutes**  
**November 17, 2021**  
**Remote meeting via GoToMeeting**

Members in attendance: Rick Lathrop (chair), Jim Applegate, Joanna Burger, Emile DeVito, Russ Furnari, Jane Morton Galetto, Howard Geduldig, Erica Miller, David Mizrahi, Howard Reinert.

Absent: Robin Dougherty

Staff in attendance: Dave Golden (Director DFW), John Heilferty (Chief ENSP), Kathy Clark (ENSP), Mary Monteschio (DFW), Christina (Kashi) Davis (ENSP), Emily Heiser (ENSP), Melissa Woerner (BLM).

Public: Barbara Sachau

Meeting called to order at 9:02 am.

The public notice for this meeting was read by J. Heilferty.

Introductions of those in attendance.

**Approval of Minutes**

R. Furnari made a motion to approve the minutes from the September meeting, second by J. Galetto. There was no discussion and the minutes were approved.

**Director's Report by Director Dave Golden**

This week marks the second week that the DEP and DFW staff are back in the office full time. The DFW are also adapting to mandatory testing for those not vaccinated against COVID. Two DFW facilities are being used as testing sites for the DEP.

Assistant Commissioner Ray Bukowski recently retired, and Craig Dorsett is now Acting Assistant Commissioner. Another retirement is Diane Ogonofski, who handled Human Resources actions. At this time, there are a lot of hiring and promotional actions within the Division.

Some important legislative actions: The NJ Waterfowl Stamp price increase was signed by the Governor last Monday, which adds money to the Waterfowl Stamp Fund to support conservation programs and purchase habitat. Also notable, the federal infrastructure bill passed, and that will provide \$350 million for wildlife-highway crossings, and over \$10 billion for wildfire and forest health, among other things.

The DFW is ready to launch the Wildlife Habitat Supporter Program on November 23. Funding generated will go toward wildlife management areas. There was discussion about the desired management for a variety of WMA visitors.

The WHS sticker may eventually substitute for other use permits such as the DFW's boat ramp permit, if only at select sites. Twenty-five other states have voluntary or mandatory programs to access WMAs. All states struggle with supporting land conservation in the face of rising staff and maintenance costs.

The DFW survey of WMA users a few years ago identified areas where a high proportion of users are not license buyers, and those may be the areas where more interaction/signage/trails might target users and future supporters.

### **Legislative Updates**

M. Monteschio reported that (as previously mentioned) the federal infrastructure bill passed. RAWA (Recovering America's Wildlife Act) has 106 House sponsors but the Senate has not added any new co-sponsors.

### **Public Input**

B. Sachau mentioned the minutes should be made available to the public more quickly. According to her, two attendees were not allowed to speak at the October joint meeting. She thinks the time allowed for public input is too brief. She also thinks waterfowl hunting should not be legal. She thinks the wildlife and trees should be protected.

### **Updates**

K. Schantz is proposing two research projects for Northern copperhead, which have been recommended for threatened status. The funding comes from Tennessee Gas Pipeline mitigation funds that were dedicated to the Division, some of which the Division has put in trust. Allocating funds from the NJ Natural Lands Trust requires ENSAC approval of the work plan. The proposal is to release \$500k for ENSP to award two grants for innovative research on survey methods that is suitable for DEP use. The second fund would support Rutgers University research in the amount of \$370k on N. copperhead habitat use, range and dispersal, and habitat characterization in north and central NJ.

**J. Burger made a motion to approve the release of \$870k from the Skylands timber rattlesnake/northern copperhead mitigation account in NJ NLT. Seconded by R. Furnari. Discussion followed. The motion passed unanimously.**

K. Schantz asked if there are ENSAC members who are willing to review the grant description and scoring variables (but excluding members who may want to bid on this work). R. Furnari, E. Miller, J. Applegate, and H. Geduldig volunteered for this task.

\*\*\*

The white paper on Northern Diamondback Terrapin has been delayed; biologist B. Zarate has taken over the project from retired J. Bowers-Altman.

\*\*\*

The amendments to the bylaws in 2019 direct that, in November of 2022, the terms of J. Burger and D. Mizrahi will expire; D. Mizrahi's term is subject to reappointment.

Nominations Committee (E. Miller, H. Geduldig, and R. Furnari) will convene to make recommendations for appointment/reappointment. H. Geduldig reported for the Nominations Committee that D. Mizrahi will be reappointed if he is willing to continue serving. The search for a new appointment to fill J. Burger's academic position will begin; the seat requires that candidates have academic/research background and interest in nongame wildlife; and to also advance the Committee's diversity goal and/or experience in urban habitats. R. Lathrop asked for a slate of potential candidates at the January meeting.

### **New Business**

**Melissa Woerner presented on the Pond Creek restoration project at Higbee Beach WMA** M. Woerner is the habitat planner in the DFW Bureau of Lands Management. The Pond Creek marsh restoration project is funded by natural resource damage funds in the Office of Natural Resources Restoration. The DFW was charged with the project design.

Pond Creek is a tidal creek open to Delaware Bay, but tidal flow has been impeded for many years. Restoration goals: restore tidal hydrology, improve flora and saltmarsh productivity (eradicate Phragmites); construct tidal inundation and water control structures; protect existing freshwater marsh habitat upstream from Pond Creek; improve migratory bird habitat; use excavated sediments to facilitate remediation of the former magnesite area and landfill; establish this site as ecotourism resource.

Part of this site was used for a magnesite industry that resulted in slag fill on parts of the site. The creek's hydrology was changed and inconsistent tidal flow has allowed Phragmites to dominate the marsh, and upstream freshwater habitats have had saltwater intrusion. Fixing the hydrology will restore marsh productivity.

The assessment, engineering, and permitting have been done, and stakeholders were convened for public input. The proposed project will improve the tidal flow of Pond Creek, and feature an earthen berm with four water control structures to protect the freshwater areas from further tidal inundation. The berm will be walkable and have nine wildlife viewing structures/overlooks at sites of interest. In the marsh interior will be high marsh or shell islands for wildlife habitat. A visitor interpretive center is planned for the entrance off Sunset Blvd.

The DEP is revising the project specifications to re-bid it soon.

Discussion: Members expressed appreciation for this project design. E. DeVito asked how sea level rise was accounted for in the modeling. Director Golden noted that the berm, which is the largest feature, is overbuilt and thus will hold up to sea level rise. But the low to high tide within the restored marsh are on a narrow margin in terms of the habitats inside the area. The potential interpretive center will definitely be designed with sea level rise in mind.

## **Christina (Kashi) Davis and Emily Heiser presented on the 2021 Beach-nesting Bird Project**

The Beach-nesting Bird Project monitors beach nesting bird sites from Sandy Hook to Cape May, monitoring for species abundance and productivity, and managing to protect and enhance nest success.

The Memorial Day weekend nor'easter storm defined the 2021 season: it was cold and lasted three days, with heavy rain and wind. The storm hit when many beach-nesting birds were far along in their initial nest attempts.

### Piping Plovers

137 pairs (second highest pair count since monitoring began in 1980s) at 28 sites had success of 0.85 fledglings per pair, well below the 1.50 recovery goal. Plover distribution is clustered heavily on federal properties. Failures were largely due to predation (48%) and flooding (36%). Predation was mostly mammalian, and of note, by coyotes this year. The population size and productivity charted since 1987 shows a lot of variability in both pairs and productivity rates. In 2021, there were 259 nesting attempts and 64% failed. The failure rate is usually around 40%. Exclosure use continues to be difficult – exclosed nests hatch at a higher rate than unexclosed (59% v 10%) but have a higher rate of abandonment (with is associated with adult mortality).

### Least Terns

1,153 adults at 26 sites, that produced 301 fledglings. Three sites were significant: Horseshoe Island, Holgate, and Point Pleasant Beach. The population trend since 2012 has been fairly stable even though productivity rate has not been ideal.

### Black Skimmers

2,099 adults at 6 sites, that produced 1,362 fledglings. Of the 6 sites, 5 sites fledged young (this species nests later and largely escaped the nor'easter). The population trend since 2012 has been fairly stable but the number of colonies has declined to as low as four sites. Staff has been color-banding skimmers with The Wetlands Institute in recent years, which is yielding resighting data; 5 birds were tagged with transmitters in 2021, which should provide data on foraging range of breeding birds.

### American Oystercatchers

This species nests on both beaches and marshes, so it is difficult to census and estimate population size. In recent years, more are nesting on beach fronts, which may be a shift away from back-bay habitats. ENSP and its partners monitored 169 pairs at 46 sites, documenting 0.24 chicks per pair. Most pairs nested at three sites (Holgate, Stone Harbor Point, Sandy Hook).

Barnegat Light State Park beach restoration area was completed in 2020, and in 2021, attracted least terns, black skimmers, and five pairs of piping plovers inside the restoration area. Longer term management will be vegetation control to maintain suitable habitat.

Horseshoe Island formed off of the Little Beach unit of Forsythe NWR. It showed up in 2018 and by 2021 was stable enough to host nesting black skimmers, oystercatchers, least and common terns. Thousands of shorebirds used it for resting and foraging, including federally listed piping plover and red knot. Staff are working with USFWS to petition NJ Tidelands Council for management authority to fence nesting colonies and prevent boat landings, etc.

Cape May Meadows sand transfer ENSP worked with partners (US Army Corps, The Nature Conservancy) to remove sand and restore it back to a lower elevation suitable for beach-nesting birds. The removed sand was used for beachfill projects in Cape May City and Cape May Point. As a result, least terns re-occupied and had good nest success.

#### Discussion:

J. Burger is interested in black skimmer nests in Barnegat Bay. She notes that her band records show that terns are moving north (for example, to Mass.).

E. DeVito asked if piping plover return to nest after their first winter? E. Heiser: they usually do, but males especially tend to have lower success finding mates and territories. D. Mizrahi: Horseshoe Island was important for southbound migrating red knots this fall, so it does need protection. Also, does predator control on federal lands make up for early flooding events? E. Heiser: controlling human disturbance on those federal lands may be more influential to improving nest success. K. Davis adds that human disturbance affects chick success by impeding feeding opportunity. K. Davis added that Horseshoe Island is important for many species including federally listed birds. J. Burger said that keeping the populations of beach-nesting birds stable, even if not increasing, is a win.

Committee members thanked Kashi and Emily for their presentation.

#### Other Business

J. Galetto suggested a meeting presentation on plants would be welcome.

R. Lathrop suggested a discussion via ad hoc group with the DEP regarding the horseshoe crab ARM model. There was interest from D. Mizrahi, J. Burger, J. Galetto for an ad hoc subgroup (an email will make the request to the entire ENSAC to reach those not in attendance). J. Heilferty said Joe Cimino of Bureau of Shellfisheries can help on this topic; Eric Schradling/Wendy Walsh of USFWS should also be involved.

#### Looking ahead: Proposed 2022 ENSAC meeting dates

Third Wednesdays in 2022:

**January 19**

**March 16**

**May 18**

**July 20**

**September 21**

**November 16**

Tentative: Possible October joint meeting with FGC? **October 11, 2022?**



Decisions need to be made regarding future meetings in-person at Assunpink office, continued virtual, or some hybrid of those two. Director Golden said the Assunpink conference meeting equipment will be tested to try to accommodate in-person and hybrid options. The Division will seek guidance on policy/procedures for committee/council meetings with regard to COVID.

Next regular ENSAC meeting is Wednesday, January 19, anticipated to be virtual and starting at 9:00 AM.

**J. Galetto made a motion to adjourn, seconded by H. Geduldig. Meeting adjourned 12:15 pm.**

#### **Summary of Action Items**

- 1) Action item: ENSP will report on the status of the “white paper” at an upcoming meeting if it is completed and available.



**The New Jersey Natural Lands Trust  
LAND OFFERING FORM**

**Site Name:** Newbold Island-Bordentown Township/GA  
**ID#:** 662-01 and 02

**Donor(s):** Green Acres, NJDEP (Offer # 9880)  
**Address:** PO Box 420  
**City, State, Zip:** Trenton, NJ 08625  
**Phone:** 609-984-0500  
**Agent/Contact:** Courtney Wald-Whittkop

**Municipality:** Bordentown Township  
**County:** Burlington  
**Quad Name:** Trenton East  
**Frontage:** Delaware River  
**Block:** 141  
**Lots:** 1, 1.01, 1.02, 2, 2.01, 3, 3.01, 3.02, and 4  
**Acreage/dimensions:** Approximately 500 acres  
**Zoning:**  
**Assessed value:** \$1,988,700  
**Annual taxes:** \$58,148.00

**Improvements:** None  
**Offer restrictions:** None  
**Offer contingencies:** None  
**ROWs or easements:** None

**Type of Acquisition:** Agreement

**Property taxes paid through end of year transfer:** Yes  
**Property taxes paid by:** Green Acres

**Farmland assessed:** No

**Estimated annual management costs:** N/A  
**Land management fund donation:** N/A

**Owner will prepare deed:** Green Acres will prepare deeds  
**Intended date of closing:**  
**Owner will provide property survey & monuments:** Green Acres will provide surveys

## **Description of Offering**

Newbold Island, also formerly known as Biddle's Island, is an approximately 500-acre island in the Delaware River off of the shoreline of Bordentown and Florence Townships, New Jersey. Along the Florence Township shoreline is the Roebling Wire Works and Village, which is on the National Register of Historic Sites.

Throughout the eighteenth and nineteenth centuries, the island was used mainly for agricultural purposes with perhaps some ship building activity. After it was seriously flooded in the 1940s, the island was sold to two industrial companies, one of which, Warner Sand and Gravel Company, extracted sand and gravel from the northeastern portion of the island. When PSEG acquired ownership of all of the island with the exception of approximately 20 acres at the northeastern tip of the island, Warner Sand and Gravel Company retained mineral rights. In addition, there were times that the U.S. Army Corps of Engineers used the island as a disposal area for material dredged to maintain the Delaware River shipping channel.

Newbold Island was acquired by PSEG as the proposed location of a nuclear generating station. In 1970, PSEG undertook site preparation including the excavation of a pit about 200 yards long and wide and 60 feet deep for the future generating station. The excavated soil was disposed of at a designated spoils area east of the excavation or evenly distributed in a layer over the west end of the island. Plans for the station were abandoned after the Atomic Energy Commission pushed PSEG to move the nuclear station to Artificial Island in Salem County. The excavated pit is all that remains of the proposed generating station and is considered a pond. PSEG now offers the property for sale to Green Acres.

In 1977, Governor Brendan Byrne wanted to make Newbold Island a state park but chose not to pursue it after Bordentown Township raised concern about losing what was then more than \$100,000 a year in property taxes. The township is aware that PSEG has offered the island for sale to Green Acres and is encouraging the State to preserve the island as open space to complement some of their open space plans. Bordentown recently purchased approximately 72 acres of property along the Delaware River shoreline across from Newbold Island that was previously slated for high-density housing as part of a multi-phased high-density residential and commercial development known as Bordentown Waterfront Development project. The property is now planned for dedicated public open space, wildlife preservation, and environmental conservation.

The approximately 20-acre northeast tip is currently owned by Bordentown Waterfront Community LLC, who offered the property for sale to Green Acres in 2019. At that time, the Trust had no interest since it wasn't interested in only owning the tip of the island. It is hoped that the Green Acres offer can be reactivated.

At present, there is no bridge connecting Newbold Island to the mainland. The only access to the closest mainland is by boat.

## **Ecological Description**

Newbold Island is comprised of approximately 375 acres of forested wetlands and forested uplands and 100 acres freshwater tidal marsh. As mentioned above, there is a 60-foot deep pond on the island.

As said by the National Park Service in its “Delaware River Islands Action Agenda, December 1990,”

There is a need for a strategy to conserve river islands that possess significant natural resources ... Delaware River islands provide important habitat for remnant populations of fisheries wildlife and unique plant communities. The amount of relatively pristine natural areas along the Delaware River corridor is a very small percentage of what once existed, which makes the areas that are left all the more valuable. For example, the resource inventory conducted during the study found that the islands provide important habitat for waterfowl using the Atlantic flyway on their annual migration. Experts from state resource management agencies feel that the islands may represent key links in protecting the ecological integrity of this migratory route.

The entire forested perimeter of the island provides foraging habitat for bald eagle, great blue heron, and northern harrier. The portion of the Delaware River surrounding Newbold Island is habitat for the federally and state endangered shortnose sturgeon as well as state threatened freshwater mussels.

## **Management Issues and Concerns**

Staff has not yet inspected the island. Since Green Acres will acquire the property, it will be evaluated and inspected by them for contamination and other potential hazards. Based on limited accessibility, at this point staff does not expect management of this island to pose management concerns. We may be able to tie in programming opportunities at Petty’s Island to programming opportunities here. The Petty’s Island programming contractor, the Center for Aquatic Sciences, already does some programming at Burlington Island so they may want to expand here also.

## **Acquisition Criteria**

These properties meet the Board's acquisition criteria for Rare Natural Features since undeveloped Delaware River island habitat is limited.

## **Staff Recommendations**

Staff recommends approval of these Green Acres Land Management Assignments as its Newbold Island Preserve.



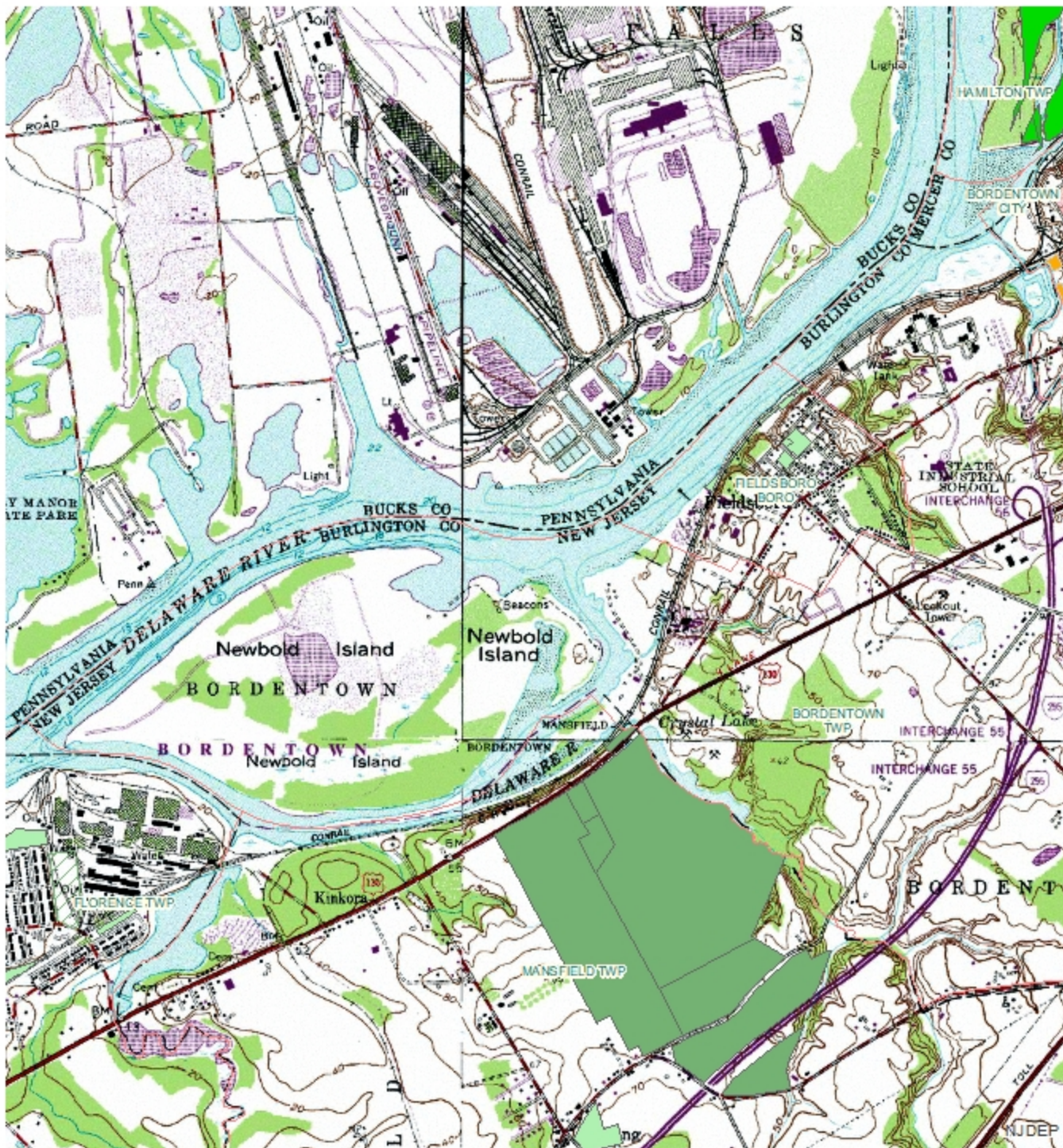
# New Jersey



## Legend

- Fish and Wildlife
- Parks and Forestry
- Natural Lands Trust
- County
- Municipal
- Nonprofit

New Jersey Natural Lands Trust  
Newbold Island - PSEG/Green Acres  
Bordentown Twp, Burlington Cty  
Approximately 500 acres





# New Jersey



## Legend

-  Fish and Wildlife
-  Parks and Forestry
-  Natural Lands Trust
-  County
-  Municipal
-  Nonprofit

**New Jersey Natural Lands Trust  
Newbold Island - PSEG/Green Acres  
Bordentown Twp, Burlington Cty  
Approximately 500 acres**





**The New Jersey Natural Lands Trust**  
**Resolution to Establish Criteria for the Sale of Pinelands Development Credits and to**  
**Authorize the Sale of those Credits**

WHEREAS, the New Jersey Natural Lands Trust (Trust) has been created by Law of 1968, chapter 425, as amended (N.J.S.A. 13:1B-15.119 et seq.), as a body corporate and politic in but not of the Division of Parks and Forestry of the Department of Environmental Protection, and the statutory purposes of the Trust include the preservation of land in its natural state for enjoyment by the public and the protection of elements of natural diversity; and

WHEREAS, the Trust has the authority to acquire, hold and dispose of real or personal property in the exercise of its powers and performance of its duties; and

WHEREAS, the Trust has the authority to make, enter into and perform all contracts and agreements necessary or incidental to the performance of its duties, the maintenance of its properties and the execution of its statutory powers; and

WHEREAS, the Trust has the authority to do all acts and things necessary or convenient to carry out the powers expressly granted in N.J.S.A. 13:1B-15.119 et seq.; and

WHEREAS, the Trust has the authority to accept gifts, legacies, bequests and endowments for any purpose which falls within that of the Trust and to invest the same in whole or in part in an interest-bearing trust account; and

WHEREAS, the Trust has the authority to apply all moneys, assets, property or other things of value it may receive as incident to its operation to the general purpose of the Trust; and

WHEREAS, the Trust has the authority to cooperate with and assist, insofar as practicable, any agency of the State or any of its political subdivisions, and any private agency or person in furtherance of the purposes of the Trust; and

WHEREAS, in 2006, Route 539 LLC donated 265 acres to the Trust in Stafford Township, Ocean County, which included a Letter of Interpretation from the Pinelands Commission allocating three Pinelands Development Credits (PDCs) to the property equating to 12 transferable development rights (TDRs); and

WHEREAS, on the basis of an application from the Trust, the Pinelands Development Credit (PDC) Bank issued a Pinelands Development Credit Certificate to the Trust for three PDCs (12 Rights); and

WHEREAS, on the basis of being a Pinelands Development Credit Certificate holder, the Trust is listed on the PDC Bank website as a potential seller; and

WHEREAS, the Trust has received numerous inquiries to purchase one or more of its three PDCs; and

WHEREAS, the Trust desires to identify the criteria which it will use to consider such offers; and

WHEREAS, the Trust has used these criteria to evaluate a particular offer and now desires to take action on that request to sell all three of its PDCs;

NOW, THEREFORE, BE IT RESOLVED that the Trust approves the following financial and ecological criteria for the sale of one or more of its PDCs, or any portion thereof.

1. No PDC, or portion thereof, shall be sold for less than the average sale price per TDR reported by the PDC Bank for the most recent completed fiscal quarter (i.e., January 1 through March 31, April 1 through June 30, July 1 through September 30, and October 1 through December 31) preceding the proposed sale; and
2. No PDC, or portion thereof, shall be sold unless buyer has provided Trust with specific information about the proposed project for which PDCs/TDRs are to be used, including a copy of the subdivision and/or site plan approval that has received municipal Planning or Zoning Board approval; and closing on that sale of a PDC, or portion thereof, shall not occur until and unless the proposed project has received final subdivision approval from the appropriate municipal Planning or Zoning Board AND the Pinelands Commission has issued a Certificate of Filing denoting that it has deemed the application complete; and
3. No PDC, or portion thereof, shall be sold if the proposed project includes any known occurrences for endangered or rare plants and/or natural communities, or endangered or threatened animal species as known by the Trust and/or as determined through a review of the New Jersey Natural Heritage Database; and
4. No PDC, or portion thereof, will be sold if proposed project is in the Pinelands Forest Area and/or Rural Development Area unless such project is a “clustered development,” which is defined as development in which a number of dwelling units are placed in closer proximity than usual, or are attached, with the purpose of retaining an open space area; and
5. No PDC, or portion thereof, shall be sold unless the Trust can make an affirmative finding that:
  - a. the proceeds from the sale of the PDC, or portion thereof, would allow the Trust to take one or more actions within the Pinelands to protect critical habitat for, or otherwise promote the protection of, endangered or rare plants and/or natural communities, or endangered or threatened animal species. This may include, but need not be limited to: land acquisition projects; species inventory and related species research projects; and ecological and stewardship projects on Trust preserves; provided, however, that the proceeds shall not be used to cover salary and other operating expenses;



- b. the sale of the PDC, or portion thereof, would not result in the impairment of the Trust's ability to pursue and advance its mission; and
- c. the proceeds from the sale will be used for a specific purpose or project in the Pinelands which will advance the mission of the Trust, or if it not possible to identify a specific purpose or project at the time of the sale, that the funds will be held by the Trust in a dedicated account, to be used only for such a purpose at a later date.

BE IT FURTHER RESOLVED, that after applying the above criteria, the Trust hereby approves the sale of its three PDCs as follows:

1. The Chair of the Trust is hereby authorized to execute such documents as may be necessary to transfer three PDCs to the Tim Schaeffer Development Corporation, 299 White Horse Pike, Atco, N.J. 08004, for the consideration of Three hundred thousand dollars (\$300,000.00), or One hundred thousand dollars (\$100,000.00) per credit; and
2. These PDCs may be used only to increase density on an approved development which is located on Block 2401, Lot 14, as shown on the tax maps of Winslow Township, Camden County, which parcel is zoned PR-4, High Density Residential, in a Regional Growth Area of the Pinelands Protection Area, and which the Trust and the Pinelands Commission has confirmed includes no occurrences of threatened or endangered species; and
3. Closing on these PDCs is contingent upon the receipt by the Trust of a copy of the relevant Resolution of the Winslow Township Planning Board granting final approval of this development, as well as a copy of a Certificate of Filing issued by the Pinelands Commission denoting that it has deemed the application for this development complete; and
4. The Trust will hold the proceeds from the sale of these PDCs in a dedicated account and identify an appropriate project or projects for which these funds shall be used at a later date, consistent with the provisions of Paragraphs 5a through 5c of this Resolution.

A duly authenticated copy of this Resolution, signed by the Chair and attested to by the Executive Director of the Trust, shall be transmitted to John Derrico, Manager of the Tim Schaeffer Development Corporation, to the Winslow Township Planning Board, and to the Pinelands Commission.

\_\_\_\_\_  
Michael Catania, Chair

\_\_\_\_\_  
Robert J. Cartica, Executive Director

DATE:

DATE: