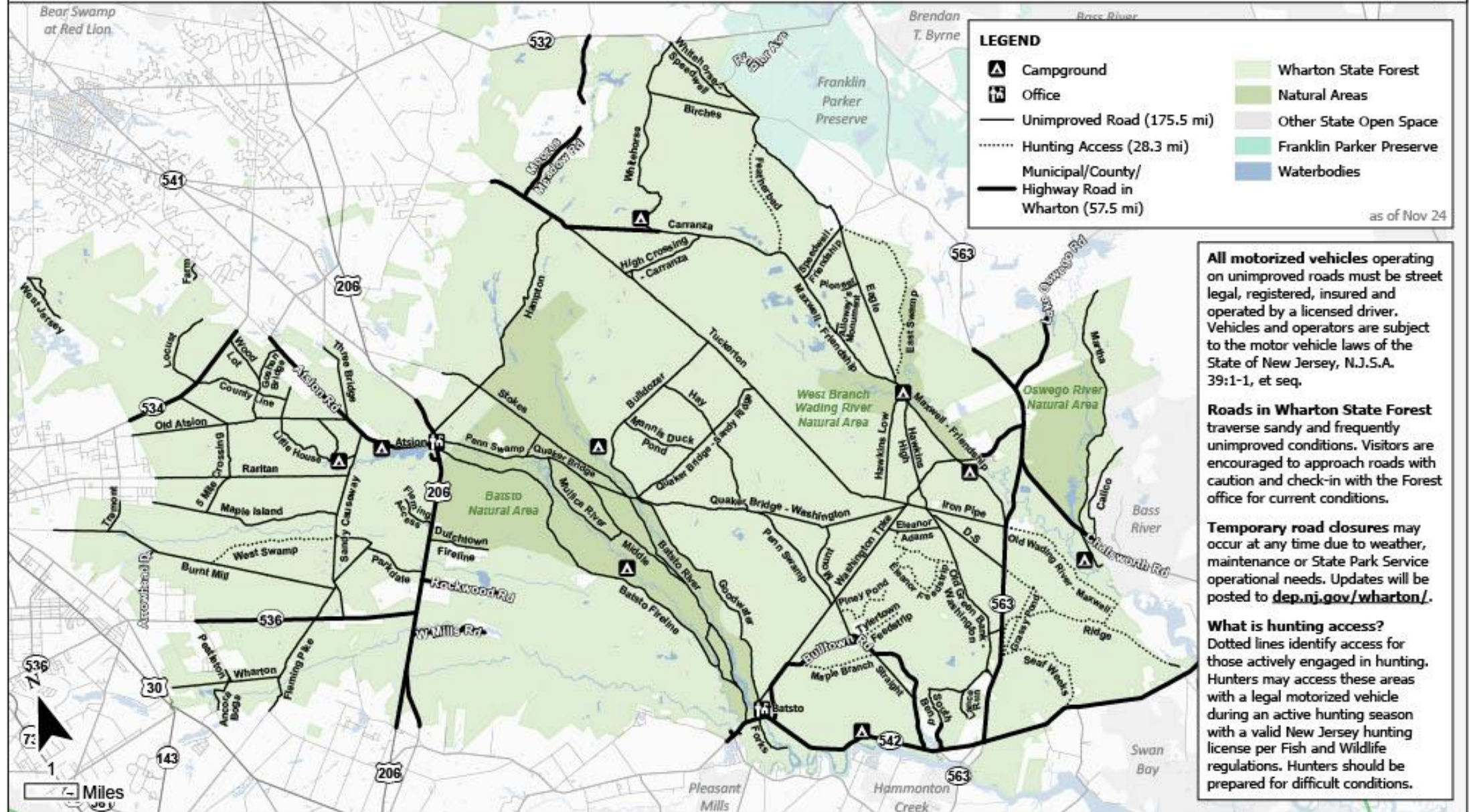


Wharton State Forest Vehicle Use

Roads and Environmentally Sensitive Areas

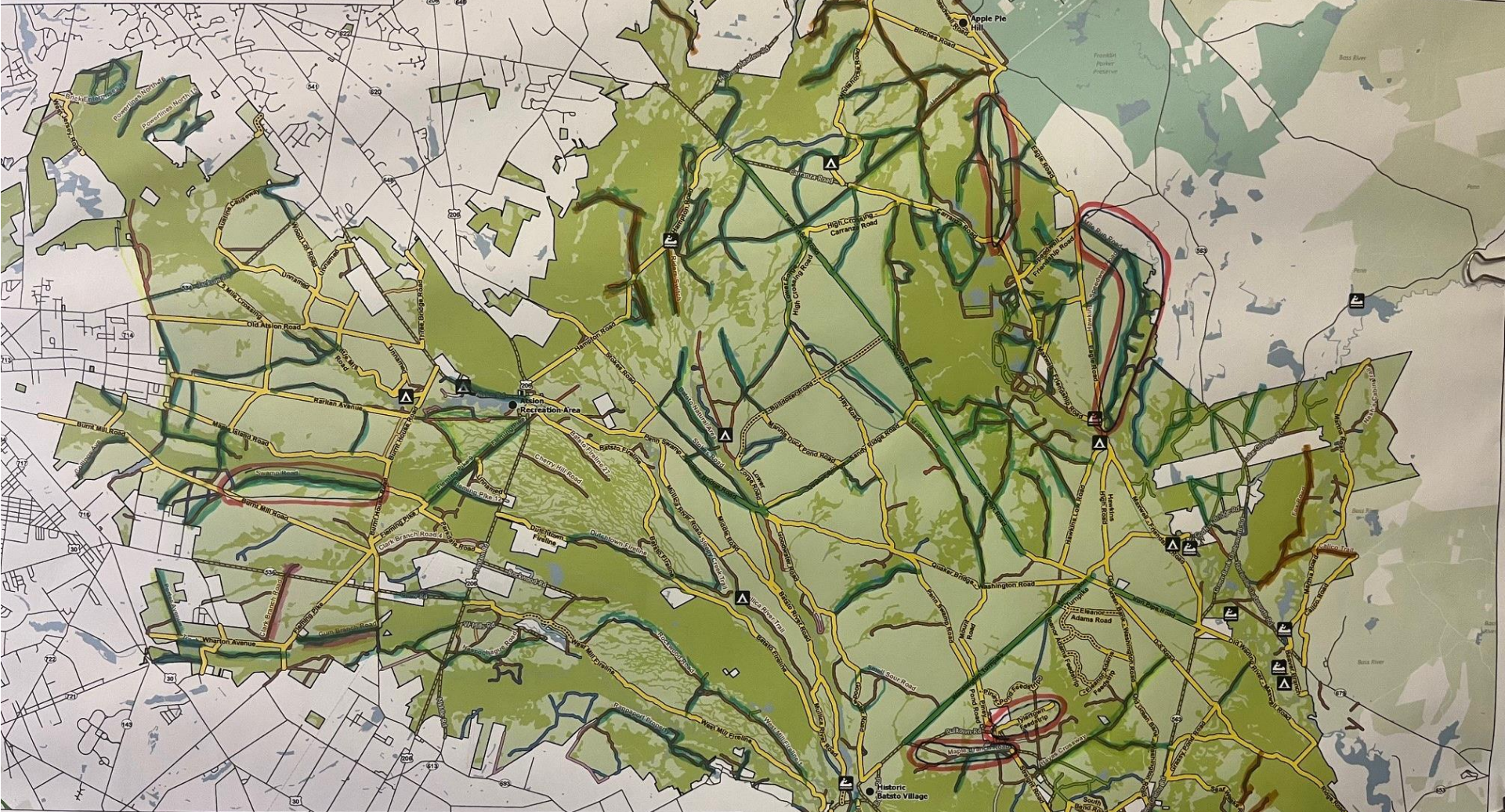
Prepared for NJ Fish and Game Council – 3/11/2025

Wharton State Forest Visiting Vehicle Use Map



Comparison Map Wharton State Forest

All motorized vehicles operated on lands under the jurisdiction of the State Park Service are subject to motor vehicle laws of the State of New Jersey, N.J.S. 39:1-1, et seq.
The maximum speed limit on all Forest routes is 20 miles per hour, unless otherwise posted.



Legend

Used Routes (190 miles)	Proposed Routes not on USGS Topographic Maps (10 miles)	Proposed Closure: Natural & Historic Resource Concern (200 miles)	Major Municipal/County/Highway Road in Wharton
Used Routes (120 miles)	Fire Control Line	Previous Closure	Wetlands
County Line	Former Agriculture	Private	Wharton State Forest
Hiking Trail	Hiking Trail		Waterbody
Nonexistent	Nonexistent		Franklin Parker Preserve
			Other State Open Space

0 0.5 1 2 3 4 Miles

North Arrow

Logos: New Jersey State Park Service, NJ, and other state symbols.

Wharton State Forest

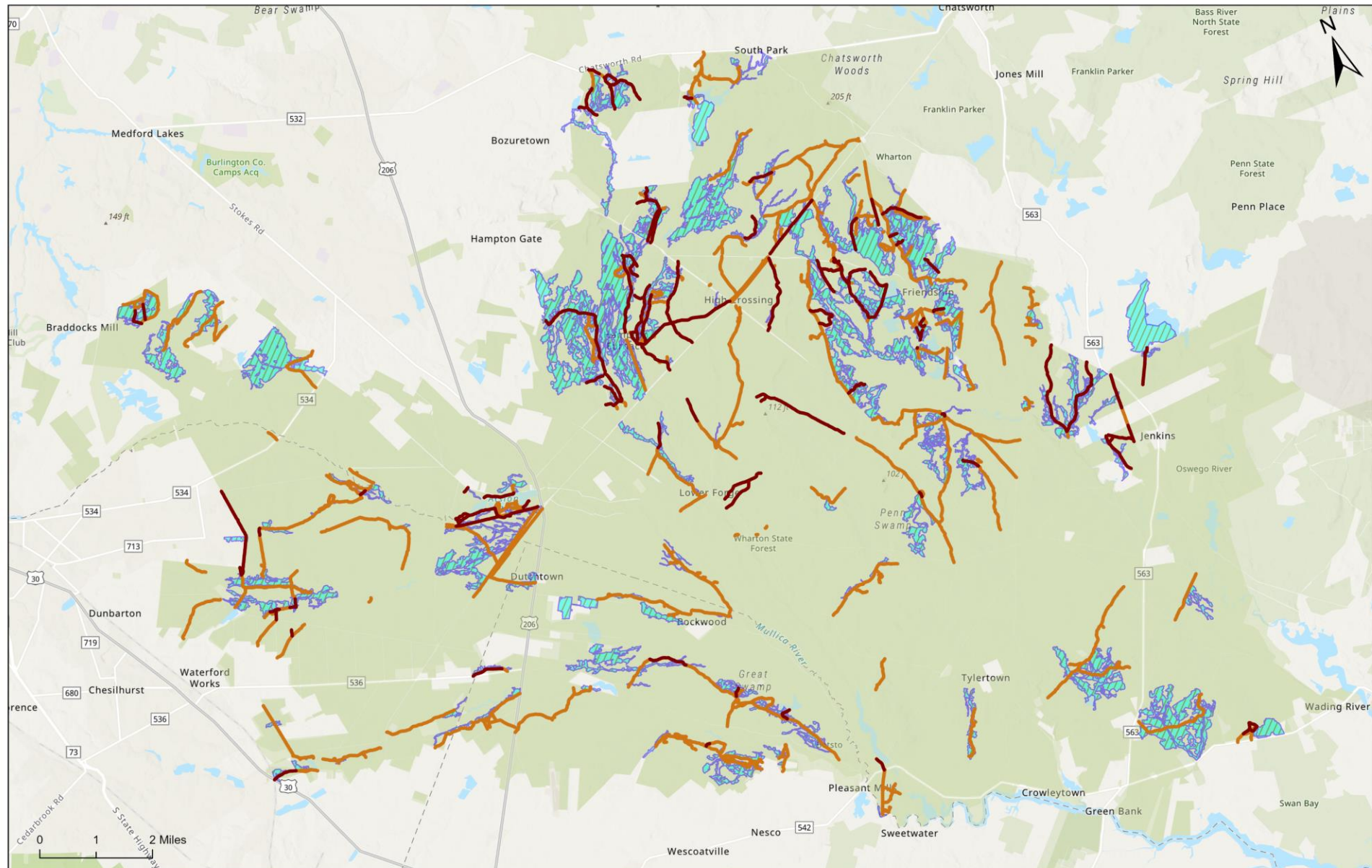
Legend

Road Status

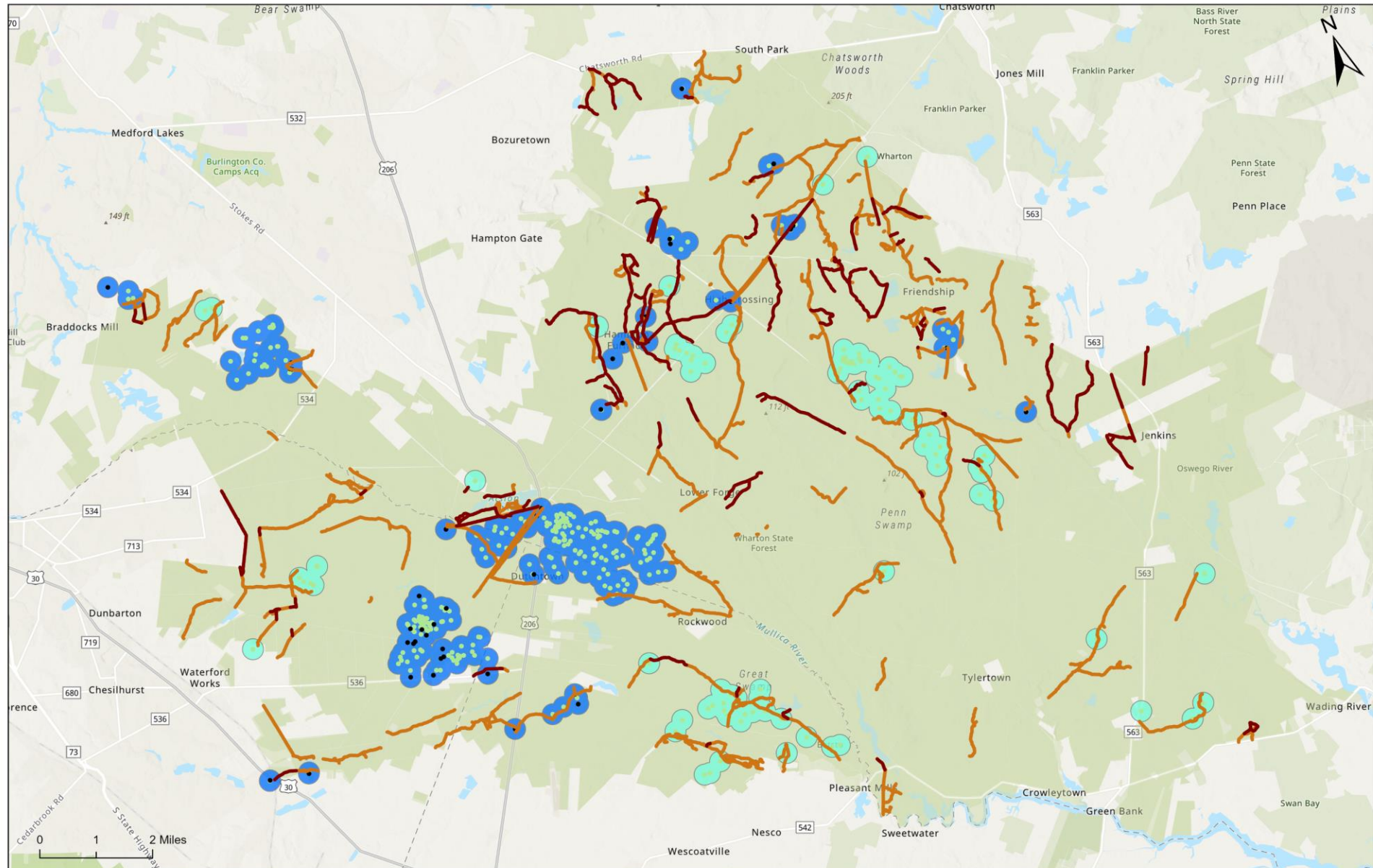
- Open or Open Seasonally (~28 mi)
- Closed - ESA (~131 mi)
- Closed - ESA Plus (~51 mi)
- Other
- Wharton State Forest

Map showing Wharton State Forest and surrounding areas. Roads are color-coded by status: Open or Open Seasonally (~28 mi) in green, Closed - ESA (~131 mi) in orange, and Closed - ESA Plus (~51 mi) in red. Other roads are shown in grey. The forest area is shaded in light green. The map includes various geographical features like lakes (e.g., Goshen Pond, West Swamp), rivers (e.g., Mullica River, Oswego River), and towns (e.g., Bozuretown, Hampton Gate, Wharton). A scale bar at the bottom right indicates distances up to 2 miles. The New Jersey Department of Fish and Wildlife logo is in the bottom left corner.

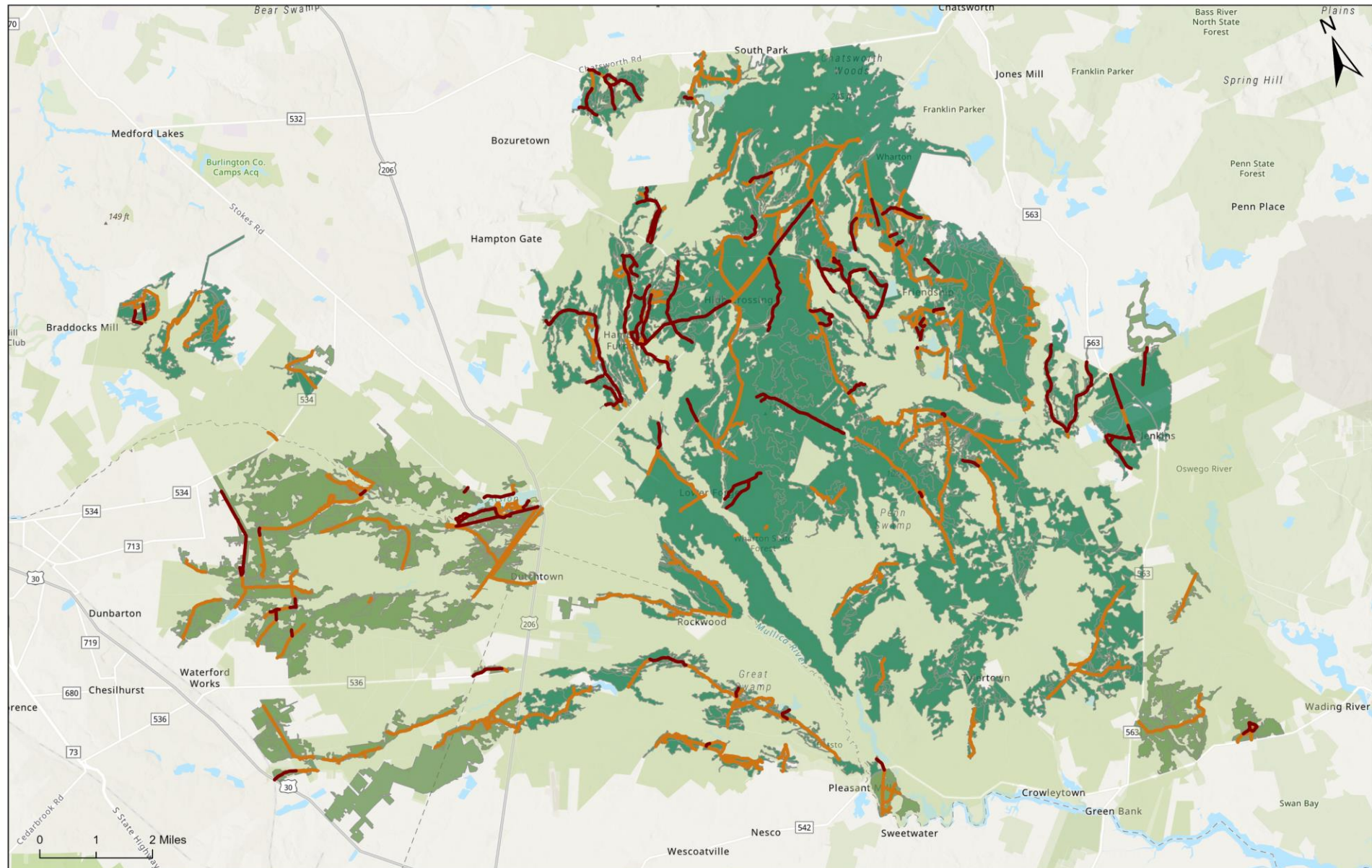
Wetlands



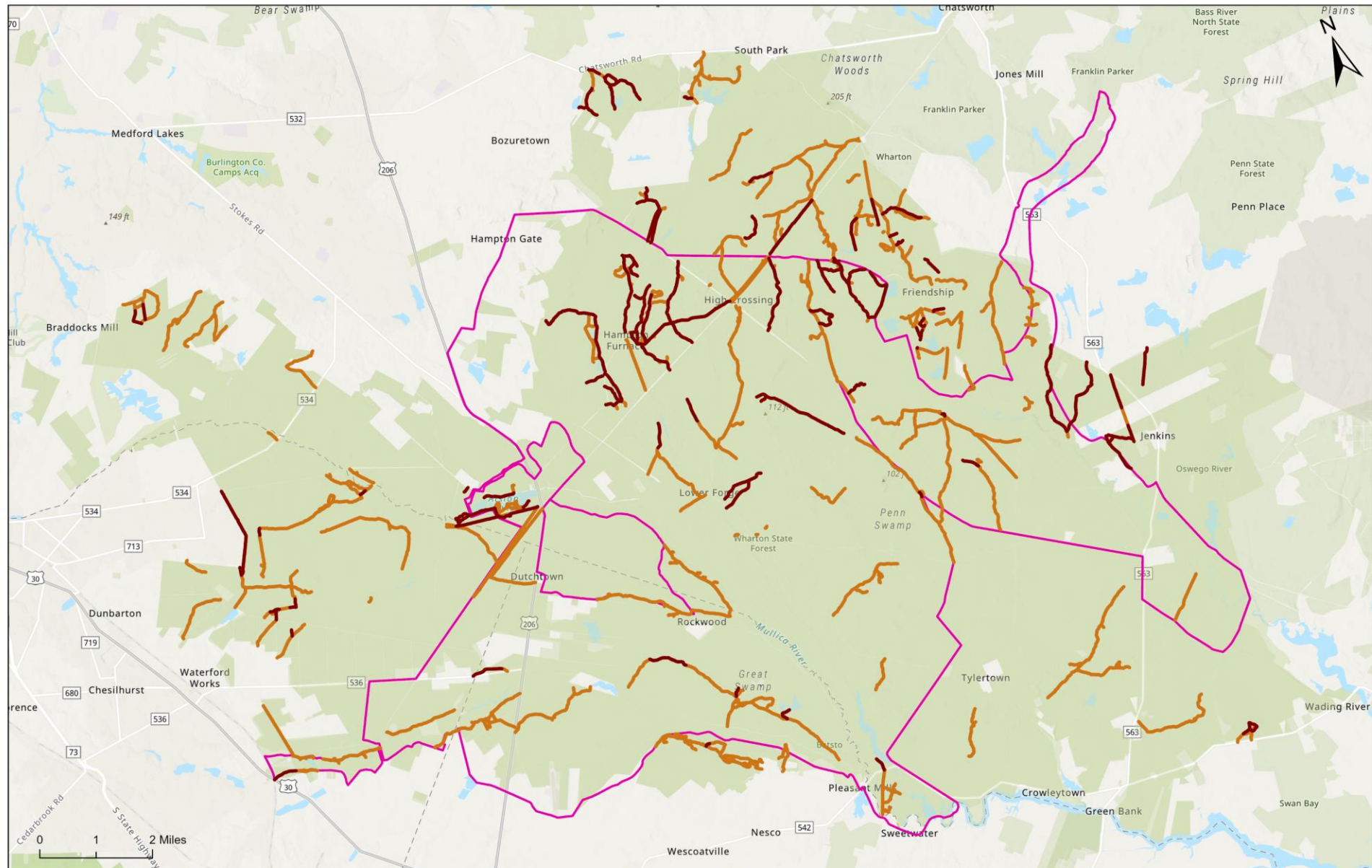
Vernal Habitat



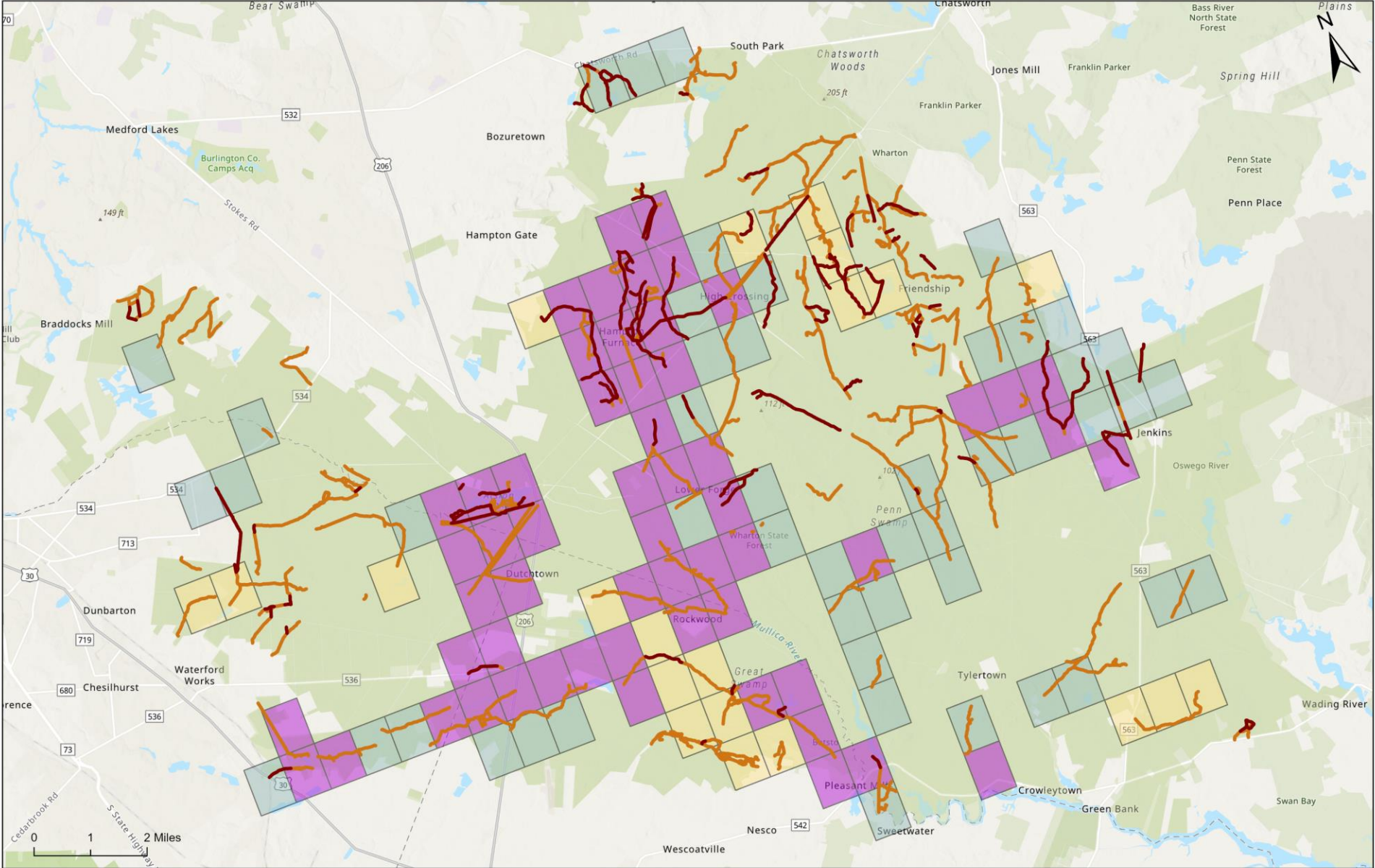
Landscape Ranks 3, 4, & 5



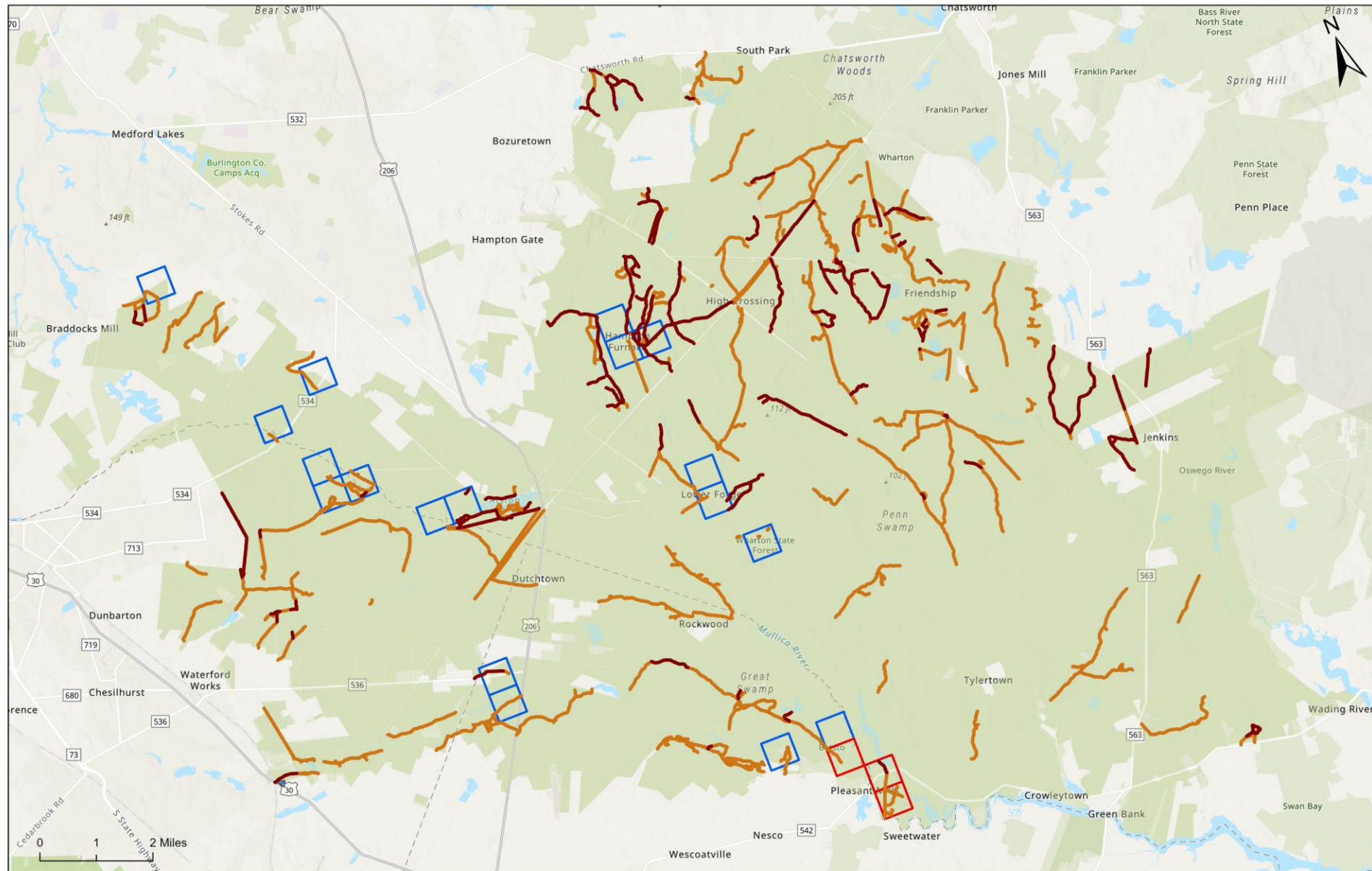
Natural Heritage Priority Sites



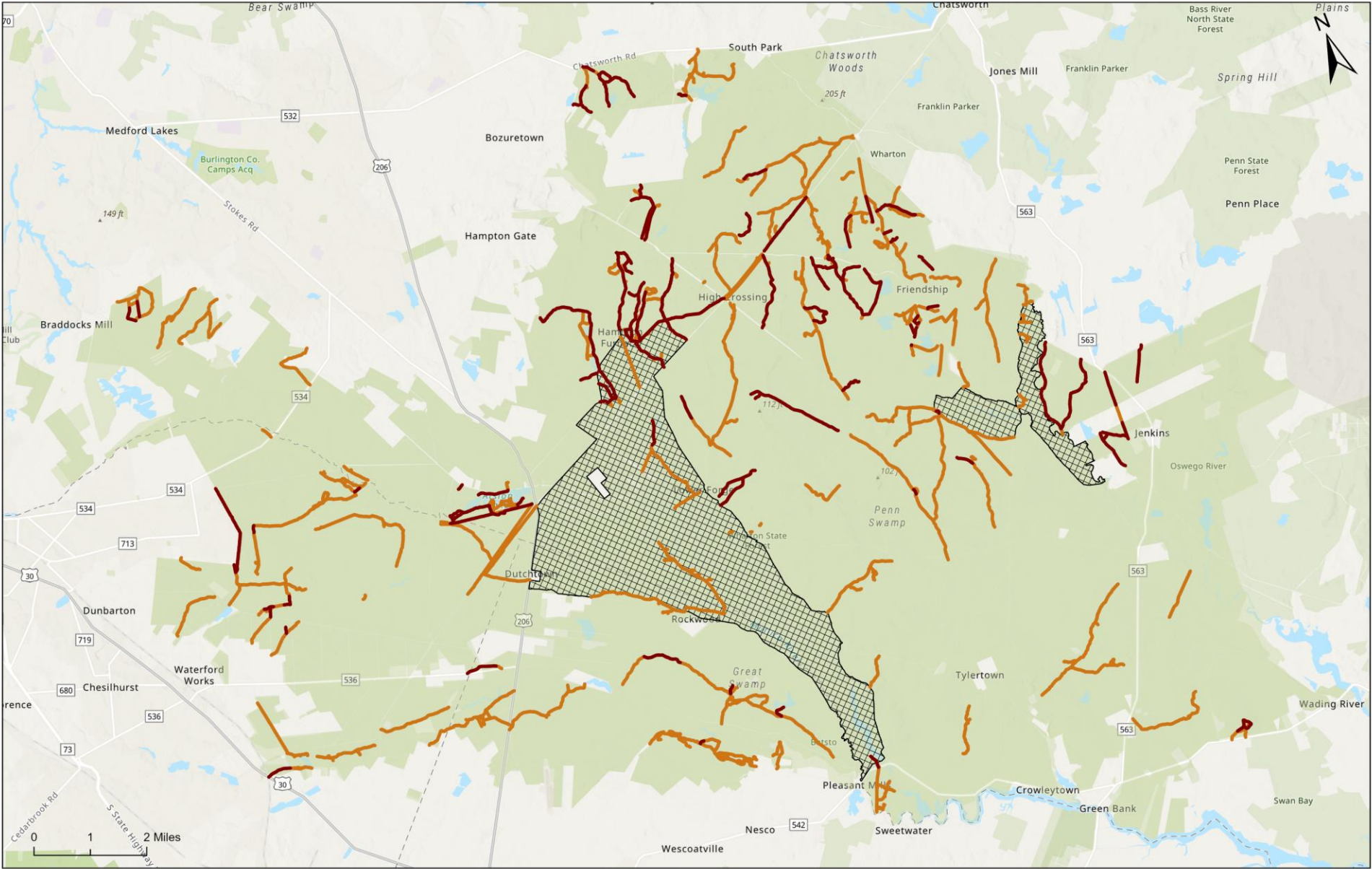
Natural Heritage Grid Map

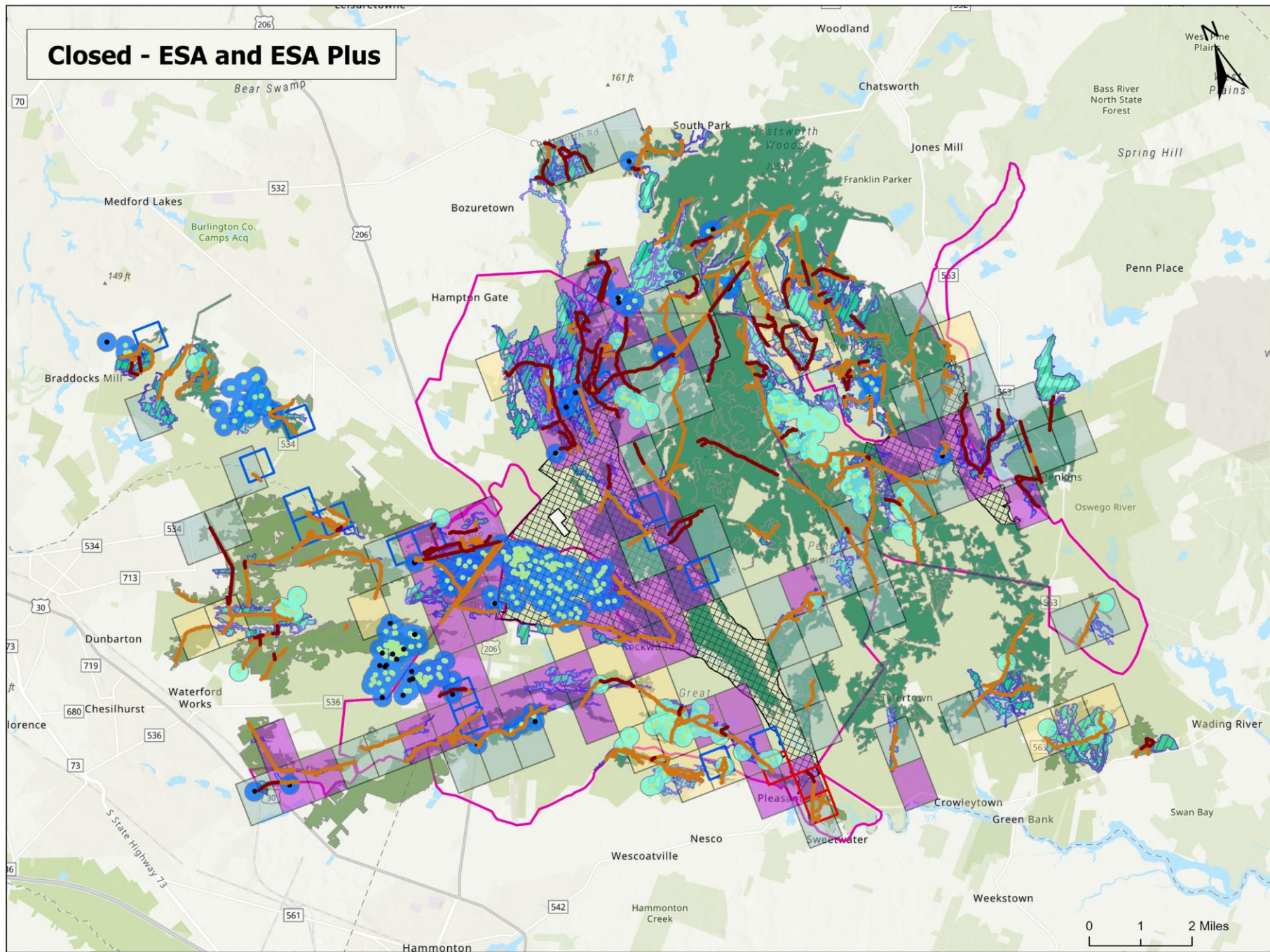


Archaeological Site Grid and Historic Properties



State Natural Areas





Legend

Road Status

- Closed - ESA (~131mi)
- Closed - ESA Plus (~51mi)

- Potential vernal pool location
- Vernal pool location
- Potential vernal habitat area
- Vernal habitat area
- Wetlands

Archaeological Site Grid - Designation Status

- Identified
- Listed

Historic Properties - Designation Status

- Eligible HD
- Identified INDV

Natural Heritage Grid - Precision

- Both - 'M' and 'S' Occurrences
- M - Documented Location Known Within 1.5mi
- S - Documented Location Known Precisely

Landscape Project - Habitat Rank

- Rank 3 - State Threatened
- Rank 4 - State Endangered
- Rank 5 - Federal Listed

- State Natural Areas
- Natural Heritage Priority Site
- Wharton State Forest

