



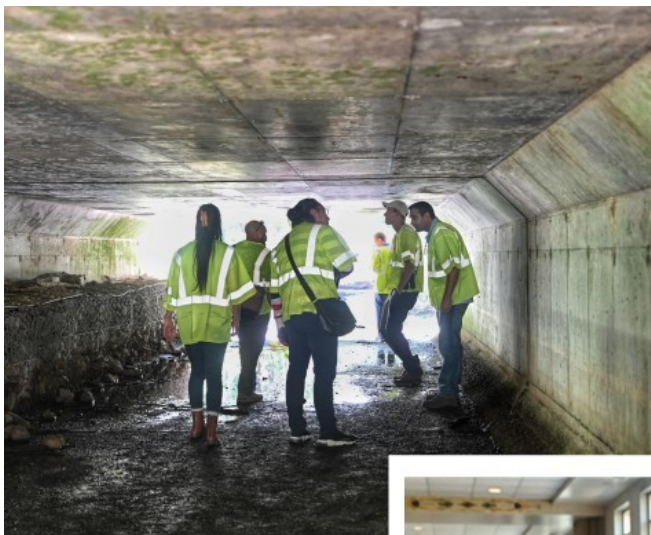
The 2022 Northeastern Transportation and Wildlife Conference (NETWC) is in the books, and as part of the co-host team (alongside South Jersey Transportation Authority and NJ Department of Transportation) we're grateful to all who attended, presented, planned, and helped out - both on site in Atlantic City and virtually - to make it a great event with incredible energy and content!

More than 200 people from 18 states and 4 Canadian provinces attended. It was inspiring as always to get together with road ecology peers, hear what everyone's been up to and learn from each other's latest successes and challenges. More than 40 talks, panels and workshops covered research, monitoring, partnerships, outreach, funding for wildlife crossing projects, and ways to standardize efforts across a multitude of states and agencies.

Missed it? Good news!

[Recorded sessions are posted in the NETWC Archives](#)

Find what interests you and "watch video"





Photos courtesy of Darleen Adamo/South Jersey Transportation Authority, except bottom left photo by NJ Fish and Wildlife

A few NETWC highlights are captured above. Clockwise from upper right: Co-host agencies gave welcoming remarks (left to right are Tina Shutz of NJ Department of Transportation, Nick Marchese of South Jersey Transportation Authority and Gretchen Fowles of New Jersey DEP Fish and Wildlife); "Home state advantage" allowed a number of NJDOT staff to attend for the first time; In-person networking was back!; One field trip toured a road fencing project done by The Wetlands Institute to keep Diamond-backed terrapins off a roadway (bonus: found a hatchling turtle!); Another field trip took the group beneath the Atlantic City Expressway to see stream culverts modified for wildlife passage by NJFW and the South Jersey Transportation Authority.

NETWC happens every other year in a different part of the northeast region. Visit netwc.org to learn more. Hope to see you in 2024!

Watch our video
and learn more at:
CHANJ.nj.gov

Email us at CHANJ@dep.nj.gov

