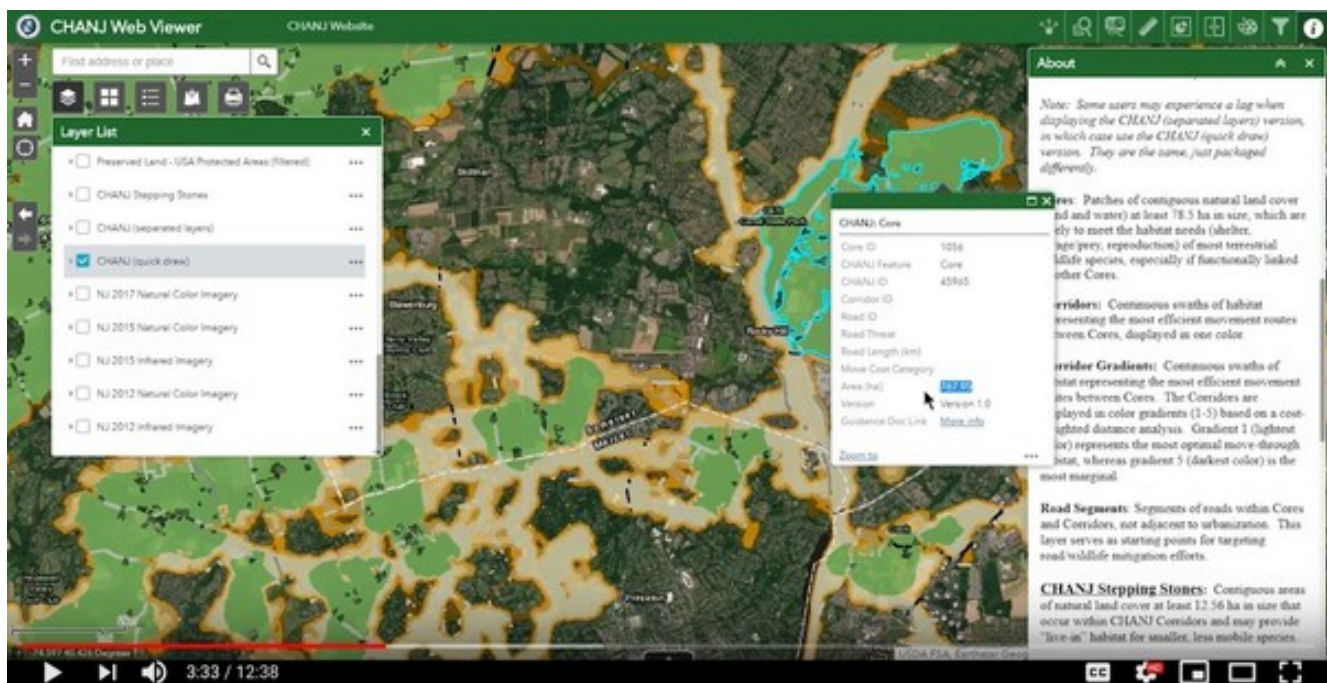




The CHANJ Mapping Tutorial is Here!

Whether on the statewide, local, or backyard scale, CHANJ can help us to visualize our place in New Jersey's habitat connectivity puzzle and to take steps to preserve and restore important linkages for wildlife across the landscape.

Not sure where to begin? Don't sweat, the [CHANJ Mapping Tutorial](#) will walk you through it! This step-by-step video shows you how to use our online interactive [CHANJ Web Viewer](#) (mapping tool), so you'll be up to cruising speed in about 10 minutes.



Remember, our [Guidance Document](#) can help you interpret the mapping and focus actions like preserving land, restoring habitat, and addressing the effects of roads on wildlife in all the right places.

Watch our video
and learn more at:
CHANJ.nj.gov

Email us at CHANJ@dep.nj.gov



Questions? [Contact Us](#)



SUBSCRIBER SERVICES:
[Manage Preferences](#) | [Unsubscribe](#) | [Help](#)

This email was sent to Email Address using GovDelivery Communications Cloud on behalf of: New Jersey Department of Environmental Protection · 401 E. State St. · Trenton, NJ 08625



From: New Jersey Fish and Wildlife <NJFishandWildlife@public.govdelivery.com>