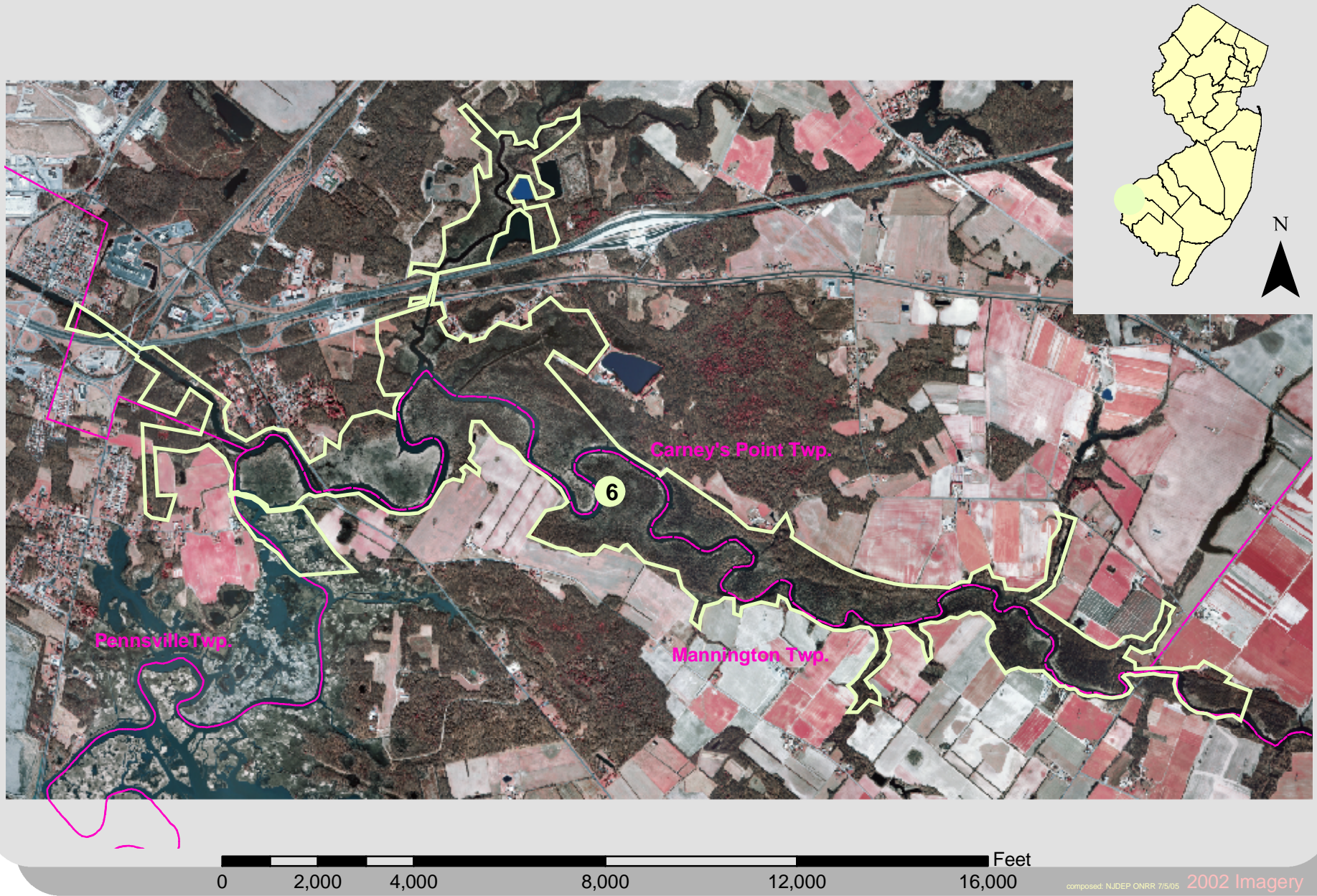



E. I. du Pont De Nemours and Company Ground Water Injury Settlement Parcel Offer: Chambers Works Salem Creek, Deepwater, Salem County




 New Jersey
 Department of Environmental Protection
 Office of Natural Resource Restoration
 Richard J. Codey, Acting Governor
 Bradley M. Campbell, Commissioner

Legend

- 6 Chambers Works Salem Creek Parcel (954.00 acres)
- County
- Municipality
- Parcels