

# Greenway Phased Development & Engagement Strategy

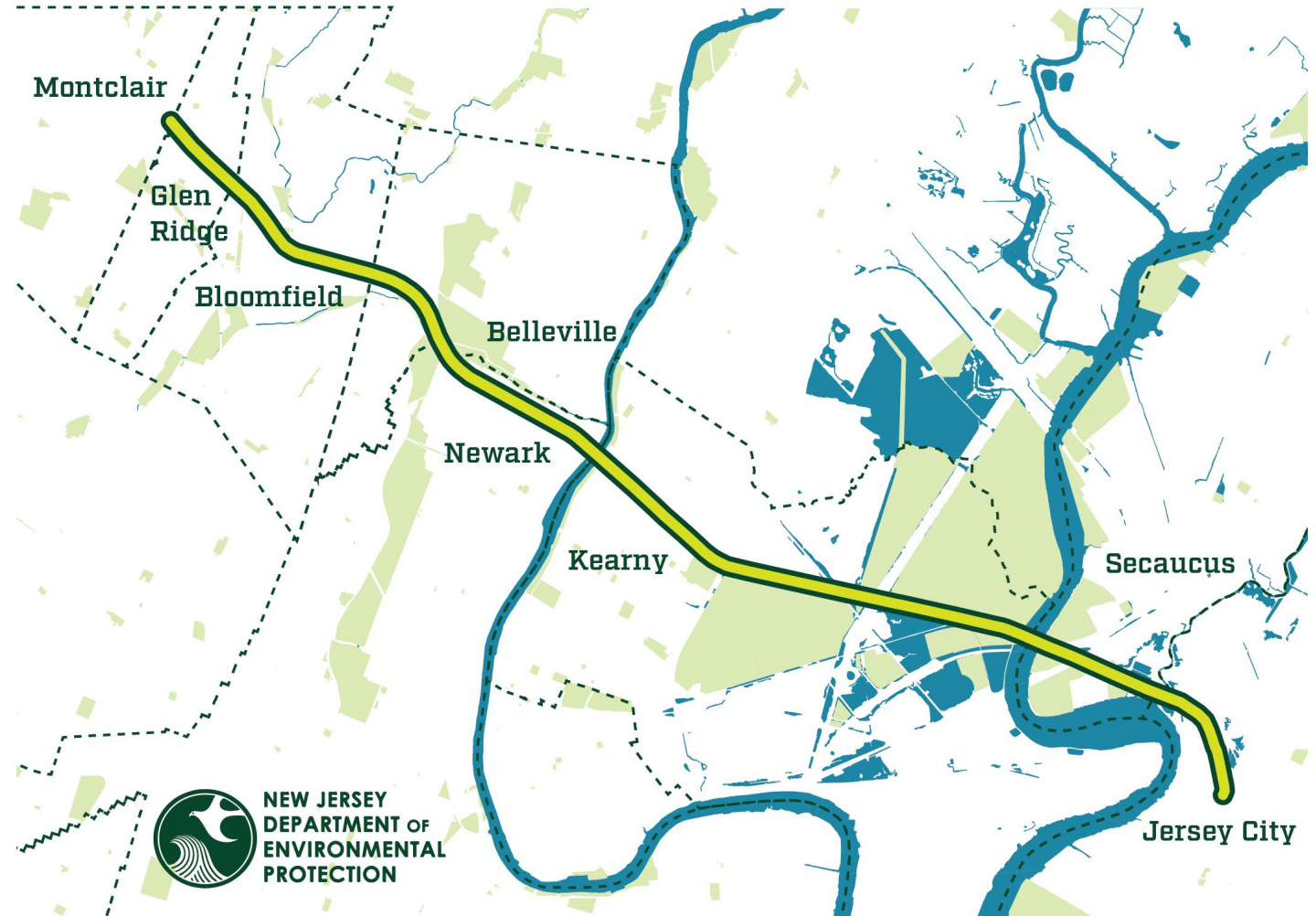
July 25, 2023 (updated 8/14/23)



NEW JERSEY  
DEPARTMENT OF  
ENVIRONMENTAL  
PROTECTION

# Overview

NJDEP is committed to deep, **robust community engagement** to learn how members of host communities want to use and interact with this new public open space, how it can **best serve community needs**, and other methods to ensure **equitable** distribution of the myriad environmental, public health, and economic benefits promised by this transformative project.





# Overview



Nihar Mhatre for Bloustein Studio on Greenway, Spring 2023.

## Vision

- Linear recreational and multi-modal transit corridor
- Seamless walking, biking, and transit opportunities
- Catalyst for economic development and environmental improvements
- Facilitating expanded public transportation linkages to meet the mobility needs of the larger region.

# Phase 1

## Phase 1a

- Seeking feedback from communities to identify the best opportunities for immediate development and public use of the Greenway to maximize value delivered to the public upon completion and prioritize initial investments in stormwater infrastructure, remediation, safety, and security.
- NJDEP and consultants to conduct a series of public listening session workshops, meetings, pop-ups/tabling at existing events, surveys, and trail tests.
- Complete Fall 2023.

## Phase 1b

- Operationalize engagement, remediation, stormwater, and safety and security efforts into a coordinated design and construction plan.
- Begins Fall 2023.
- Complete by end of 2025.

NJDEP will continue engagement with stakeholders throughout Phase 1 to ensure consistent feedback and communication of outcomes.



# Phase 2



Collin Rieger for Bloustein Studio on Greenway, Spring 2023.

## Master Plan

- Develop Master Plan that builds upon Phase 1 efforts.
- Plan for how to complete full development of the Greenway, including further improvements, amenities, and complimentary transit features

NJDEP will coordinate the kickoff of Phase 2 in Fall 2023 with the completion of Phase 1a.

# Phase 1a: Initial Investigation, Engagement & Design

## Stormwater Infrastructure

- Evaluate stormwater issues. Determine what stormwater management infrastructure is appropriate for installation prior to and/or in conjunction with the phased development of the Greenway.
- Reduce combined sewer overflows (CSOs) and feasible green infrastructure techniques.
- Increase stormwater capture and manage discharge rates during major storm events.
- DEP anticipates additional stormwater management techniques will be later implemented during phased development in accordance with the Master Plan.

**Deadline:** September 15, 2023

**Deliverable(s):**

- Stormwater Infrastructure Plan



# Phase 1a: Initial Investigation, Engagement & Design

## Remedial Investigation

- Determine what remedial actions are required to allow for safe public access to the Greenway.
- Protect the health and welfare of surrounding communities and the environment.
- DEP anticipates institutional controls, engineering controls, and additional monitoring may be necessary and ongoing during phased development in accordance with the Master Plan.

**Deadline:** September 29, 2023

**Deliverable(s):**

- Remediation Plan

# Phase 1a: Initial Investigation, Engagement & Design

## Safety & Security

- Assess the safety and security needs along the Greenway.
- Short-term, interim steps the Department should take to address public safety and security of the Greenway prior to the development of the Master Plan.
- Long-term safety and security recommendations.

**Deadline:** September 29, 2023

**Deliverable(s):**

- Security Needs Assessment & Recommendations Report



# Phase 1a: Initial Investigation, Engagement & Design

## Stakeholder Engagement

Consultant team is conducting initial community and stakeholder engagement, which will inform their recommendation(s) for the phased development of the Greenway. The Team will determine the best phased approach, be it the largest feasible contiguous portion of the Greenway appropriate for immediate development for public use with fewer amenities, or a smaller geographic area with greater amenity build out. The plan seeks to maximize value delivered to the public during development of the Master Plan.

It is yet to be determined what section of the Greenway – and to what degree of build out – will be constructed first:

1. **Focus on connectivity:** Longer contiguous area built out to a lesser degree (no amenities, only necessary capping, fencing, lighting, etc.),
2. **Focus on access:** Multiple non-contiguous areas built out to a lesser degree (no amenities, only necessary capping, fencing, lighting, etc.), or
3. **Focus on amenities:** One smaller area built out with amenities, which shows ultimate vision for Greenway.

**Deadline:** October 31, 2023

### **Deliverable(s):**

- Engagement Plan
- Execution of Engagement Plan
  - Direct engagement with key stakeholders (ongoing)
  - Public Workshop #1 (7/27/23)
  - Public Workshop #2 (week of 8/28/23)
  - Public Workshop #3 (week of 10/2/23)
  - Pop-ups/tabling exercises at existing events; youth engagement (ongoing)
  - Community leader focus groups (ongoing)
  - Surveys (starting week of 7/17/23)
  - Trail tests (starting week of 9/11/23)
- Phased Development Assessment
- Final Recommendation Report (due 10/31/23)

# Public Engagement

**Focus on Assets:** Take an assets-based approach to framing engagement questions and activities, building on local strengths and aspirations for where investments should happen, rather than concentrating on barriers to implementation.

**Share Decision-Making:** Promote community understanding and influence to determine how and where the community wants to begin investment in the Greenway, what they want to build, and what the greenway should connect to (e.g., more amenities along a smaller stretch of greenway, or a longer, connected stretch with limited amenities).

**Keep It Fun and Make the Plan Come Alive!** Make participation in the engagement process an enjoyable, interactive experience, engaging local businesses, places, and stories.

**Reconnect to Previously Engaged Entities:** Integrate and build on information shared in past studies, conversations with the stakeholders and municipalities, and with other state entities.

**Connect to and Include Many (New) Voices:** Focus efforts on closing historic gaps in outreach and engagement, especially with BIPOC residents, businesses, youth, and environmental, cultural organizations and welcome participation.

**Be Transparent and Accountable:** Value the contributions of community members, demonstrate the impact of community feedback on greenway investment and ensure community feedback drives and benefits from greenway investment outcomes.



# The Greenway



## Welcome!

### We want to hear from you!

This new public space will be built for YOU and your community and YOU are the local experts. Please help us shape the future of the Greenway and its connections to surrounding neighborhoods.



View upcoming events and find additional information here:



<https://linktr.ee/theNJGreenway>



# Public Workshop #1 & #2

## 7/27/23

### Dream Big & Identify Barriers

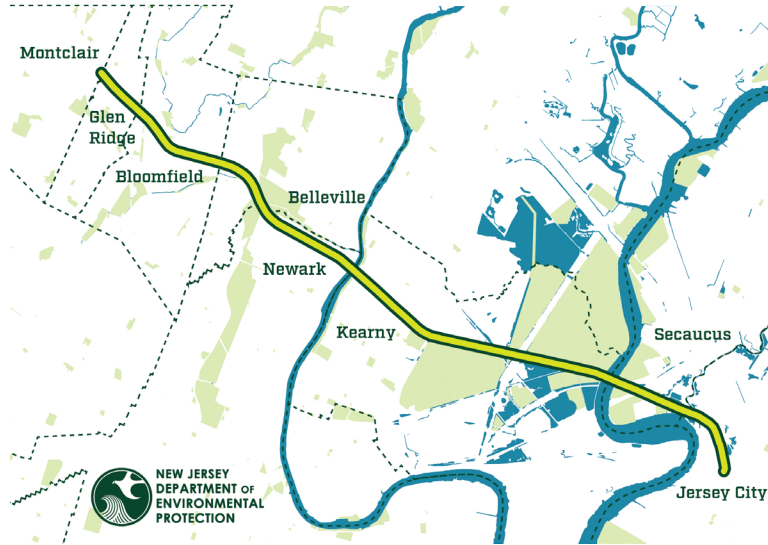
10am to 12pm: Newark North Library

6pm to 8pm: Branch Brook Park Roller Skating Rink

Focus on building plan awareness and having engaging map activities to get initial feedback about what to build, what to connect to, and where to build it.

# Public Workshop #1 & #2 – Promotional Materials

## Hi Neighbor! ¡Hola vecino!



### Learn more about the New Jersey Greenway recreation and transportation corridor.

The Greenway is a nine-mile corridor that connects eight municipalities. The New Jersey Department of Environmental Protection (NJDEP) acquired this property from Norfolk Southern on August 19, 2022. The NJDEP is conducting a planning process to understand how the Greenway can effectively support the diverse communities that surround it. We are eager to hear your ideas about how this project can best meet your needs and where we should start.

### Podrás obtener más información sobre el New Jersey Greenway corredor de recreación y transporte.

The Greenway es un corredor de nueve millas que conecta ocho municipios. El Departamento de Protección Ambiental de Nueva Jersey (NJDEP) adquirió esta propiedad de Norfolk Southern el 19 de agosto de 2022. El NJDEP está llevando a cabo un proceso de planificación para comprender cómo The Greenway puede apoyar de manera efectiva a las diversas comunidades que lo rodean. Queremos escuchar sus ideas sobre cómo este proyecto puede satisfacer mejor sus necesidades y dónde debemos comenzar.

Come to our first workshop Thursday, July 27, 2023  
Ven a nuestro primer taller Jueves, 27 de Julio, 2023

Newark North Library  
722 Summer Ave,  
Newark, NJ, 07104  
(10am to 12pm)



**Roller Skating Night!**  
**¡Noche de Patinaje sobre ruedas!**  
Branch Brook Park | 7th Ave & Clifton Ave,  
Newark, NJ 07104 (6pm to 8pm)

All ages and abilities are welcome. There will be **free admission and free food** at the Roller Skating Night!

¡Habrán **entrada y comida gratis** en la Noche de Patinaje sobre Ruedas!

You can share your vision for the Greenway in your community and all along the greenway this summer. To find out more about ways to share your ideas, please visit our website or leave us a voicemail at 908-340-6611!

Puede compartir su visión del Greenway en su comunidad y lo largo del Greenway este verano. Para obtener más información sobre las formas de compartir sus ideas, visite nuestro sitio web o déjenos un mensaje de voz al 908-340-6611.

Website: [linktr.ee/theNJGreenway](https://linktr.ee/theNJGreenway)

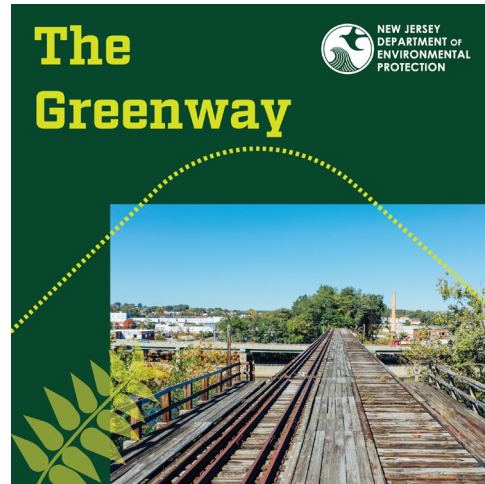
For translation services or ADA accommodations, contact [josie@agencylp.com](mailto:josie@agencylp.com).

Para programar servicios de traducción o adaptaciones de accesibilidad (ADA), comuníquese con [josie@agencylp.com](mailto:josie@agencylp.com).





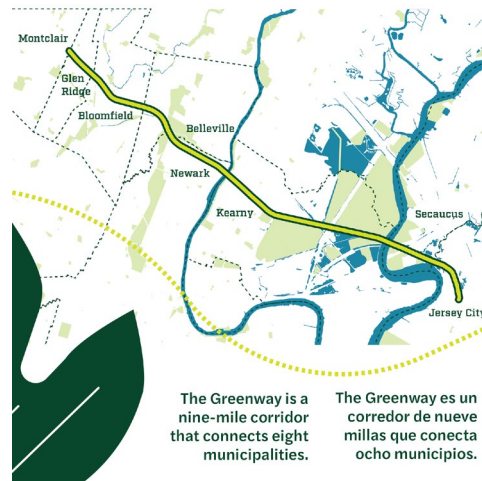
# Public Workshop #1 & #2 – Promotional Materials



To find out more about ways to share your ideas, please visit our website or leave us a voicemail at 908-340-6611!

Para obtener más información sobre las formas de compartir sus ideas, visite nuestro sitio web o déjenos un mensaje de voz al 908-340-6611.

Website: [linktr.ee/theNJGreenway](https://linktr.ee/theNJGreenway)



# Public Workshop #1 & #2 – Event Materials

## The Greenway



## What is the Greenway?

### Overview

The Greenway is an approximately nine-mile, 100-foot-wide linear corridor going through Essex and Hudson Counties. The New Jersey Department of Environmental Protection acquired this property from Norfolk Southern on August 19, 2022. The Department of Environmental Protection's vision is to convert this blighted corridor into a thriving recreation and transportation corridor traversing two of the most densely populated Counties in New Jersey – and in the nation. The Greenway seeks to provide outdoor recreation and alternative transportation opportunities to this heavily developed region, the Greenway is a once-in-a-lifetime opportunity to create a linear multi-modal recreational and transit corridor enabling seamless walking, biking and transit opportunities between Montclair and Jersey City, while serving as a catalyst for environmental improvements and economic development in the adjacent communities.



The Greenway passes through 8 municipalities and 2 counties.



The Greenway connects to approximately 1.5 million people. That is over 16% of New Jersey's population!

## The Greenway



## What is the Plan?



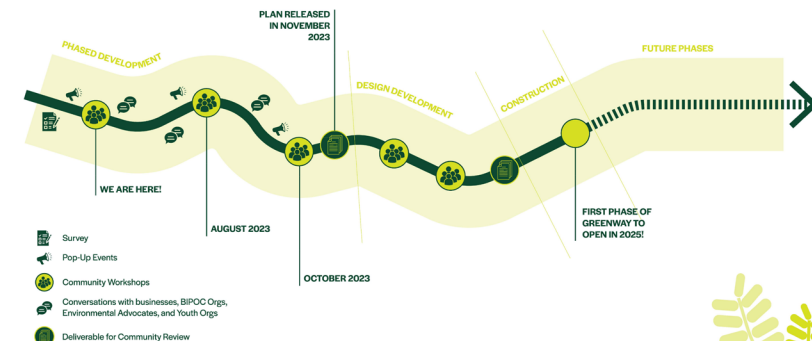
### Let's talk timeline!

This work will result in the development of a Phase 1 design, based on community feedback, in Fall 2023, with Phase 1 construction activities beginning shortly after and construction completed by the end of 2025.

The Phase 1 approach will ultimately proceed in parallel with the development of the comprehensive Master Plan, which includes the identification of further development phases. Further improvements and amenities will be subsequently incorporated into the Greenway in accordance with the finalized Master Plan. NJDEP expects to begin the more comprehensive Master Planning Phase towards the end of 2023.

What is your biggest dream for the future Greenway?

What is your biggest worry?





# Public Workshop #1 & #2 – Event Materials

## The Greenway



### Every segment of the Greenway is unique.

#### 2 Million Years Ago

The rocks that the rail line cut through and travel over were formed by glaciers and rivers over the last 2 million years. Glaciers exposed bedrock and rivers cut valleys into the land. The Kearny Cut is one example of a ridge formed by glaciers. Workers removed a portion of the ridge to connect Northern New Jersey to the ports of New York.

#### 1500s: Leni-Lenape Communities

Leni-Lenape people, of the Algonquian nation, inhabited small settlements across NJ for centuries, cultivating the land and hunting. Many names in the region - such as Passaic, Secaucus, Hackensack and Hoboken - derive from the language of the native inhabitants.

#### 1800s: Rail Origins in Iron and Ice

The movement of raw goods and services to support manufacturing hubs are where our rail story begins! Ice produced on New Jersey's abundance of lakes was moved along this route into major ports in Jersey City and New York City.

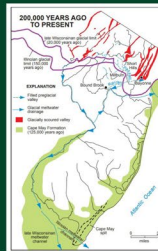
#### 1878-1943: Many Rails Into One!

The New York and Greenwood Lake Railway provided service through the Erie Railroad, which stretched north and west from New York City. In 1887, the Erie Railroad created the Arlington Railroad to connect over the Kearny Meadows between the Hackensack River and Passaic River.

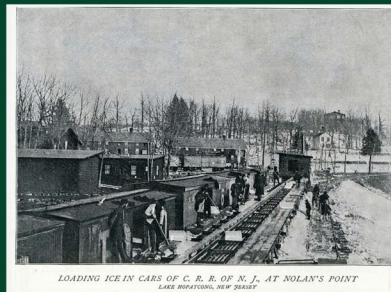
The rail line expanded east into Jersey City in 1943. In 1960 the Erie merged with another rail line to the Hoboken Terminal via the Bergen Tunnels, connecting the rail between Jersey City, Boonton, and further west.

#### 1976 to Today: A People Mover at its Core

The rail line carried commuters from 1976 to 2002, when operations discontinued because of low ridership. The New Jersey Department of Environmental Protection acquired the rail property from Norfolk Southern in 2022 to convert the corridor into a recreation and transportation destination.



New Jersey Geology



LOADING ICE IN CARS OF C. R. R. OF N. J., AT NOLAN'S POINT  
LAKE HOPATCONG, NEW JERSEY

Lake Hopatcong Ice Industry



Kearny Cut, present day.

# Public Workshop #1 & #2 – Event Materials

## GREENWAY CHARACTER ZONES

### Forest Glen

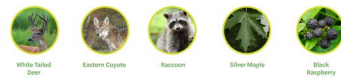


Tucked behind back yards in a shallow glen, this wooded stretch of the future greenway takes a tranquil course. Songbirds roost in the canopy while fox and deer forage below. Unique bridges mark each residential street that crosses overhead.

#### FUN FACT:

Cheaper by the Dozen is a 1948 semi-autobiographical novel by Frank Bunker Gilbreth, Jr. about his childhood in Montclair. It has received multiple stage and screen adaptations, most recently a movie written by Kenya Barris starring New Jersey icon, Zach Braff.

#### WILDLIFE + VEGETATION



#### COMMUNITY

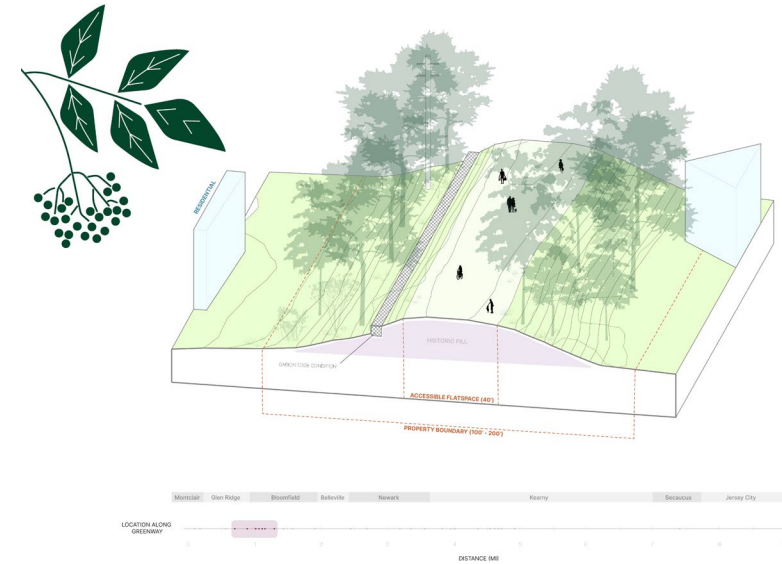


#### INFRASTRUCTURE



## GREENWAY CHARACTER ZONES

### Elevated Ridge



This segment glides above its residential surroundings along a raised berm. Historic bridges carry the future greenway above Belleville Park. Here, one might spot an occasional deer among the wildlife that utilize the segment to get to and fro.

#### FUN FACT:

In 1870, Belleville became the first municipality on the East Coast to establish a Chinatown when a group of Chinese workers settled there after completing the Central Pacific Railroad. This group of people also formed Chinatowns in Newark and New York City.

#### WILDLIFE + VEGETATION



#### COMMUNITY



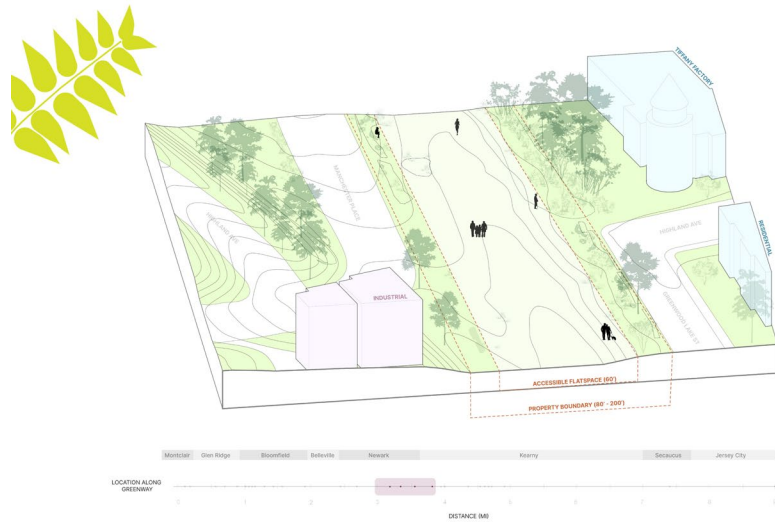
#### INFRASTRUCTURE





# Public Workshop #1 & #2 – Event Materials

## GREENWAY CHARACTER ZONES Urban Edge



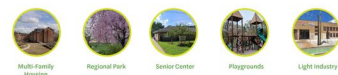
This segment runs at street level and is fully-integrated with the fabric of the surrounding neighborhood. Homes and businesses are directly connected to the future greenway. Here, two discontinued railways merge and the path opens up to 200 feet in width.

**FUN FACT:**  
Newark once produced 90% of America's gold and silver jewelry. The Tiffany & Co factory produced silver jewelry intended to compete with Georg Jensen.

### WILDLIFE + VEGETATION



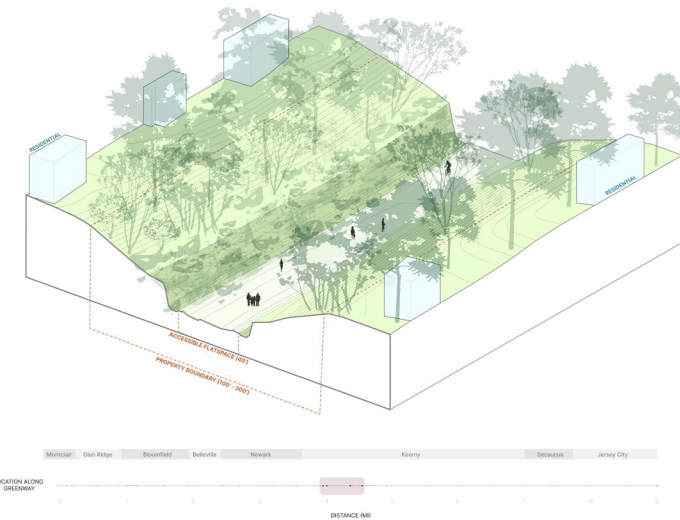
### COMMUNITY



### INFRASTRUCTURE



## GREENWAY CHARACTER ZONES Kearny Cut



This segment slices through bedrock, exposing jagged rock faces and nestling the future greenway in a canyon-like landscape that is sheltered from the city above.

**FUN FACT:**  
The discovery of copper in Kearny in the early 1700s led miners to secretly import the first steam engine to the United States. It was delivered by an engineer named Josiah Hornblower.

### WILDLIFE + VEGETATION



### COMMUNITY

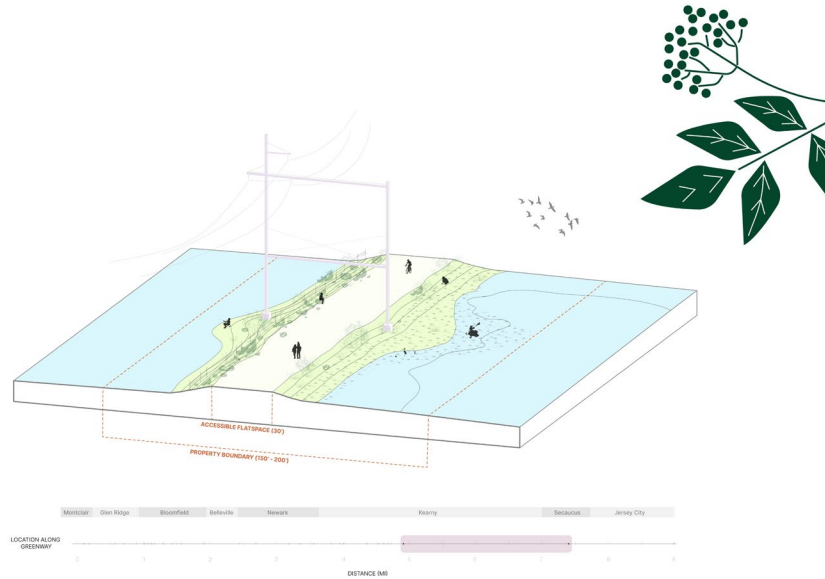


### INFRASTRUCTURE



# Public Workshop #1 & #2 – Event Materials

## GREENWAY CHARACTER ZONES Meadow Bridge



A panoramic marshland experience makes this segment stand out. On the horizon are dramatic views of Manhattan skyline, while up close trains criss-cross the landscape and birds gather in the water.

**FUN FACT:**  
There are over 3,500 acres of protected wetland habitat in the New Jersey Meadowlands. That's four times more land than Central Park

### WILDLIFE + VEGETATION



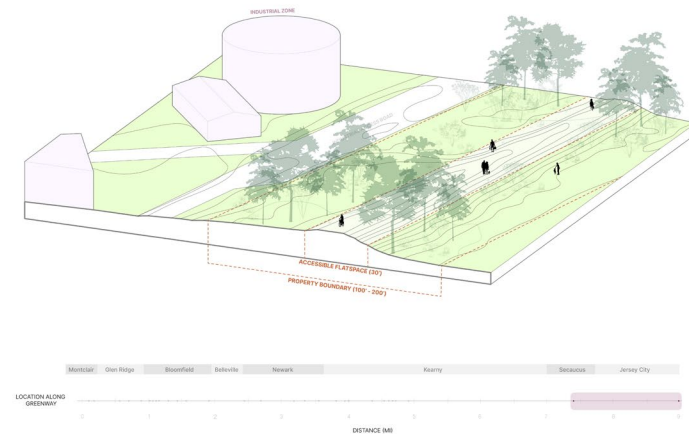
### COMMUNITY



### INFRASTRUCTURE



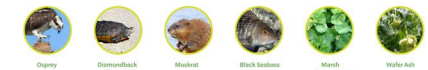
## GREENWAY CHARACTER ZONES Marsh's Edge



The meadowlands meet Jersey City and Secaucus in the segment. Marshes give way to active industrial and rail infrastructure. The din of highway traffic and reversing trucks are reminders of the work that's buzzing about.

**FUN FACT:**  
Croton Yard processes approximately 850,000 shipping containers every year. That's enough to fill more than 50 cargo ships!

### WILDLIFE + VEGETATION



### COMMUNITY



### INFRASTRUCTURE



# Public Workshop #1 & #2 – Event Materials

## The Greenway



## Setting the Greenway up for Success!



NJDEP's approach to the first phase of development (Phase 1A) will be to include the most feasible contiguous portion of the Greenway for development and public use. This will prioritize initial investments in stormwater infrastructure, remediation, safety and security, and basic supportive public amenities. Phase 1A will end in October 2023. Phase 1B will start immediately after this, which will coordinate the design and construction of the first open section of the Greenway.

This phased approach will work in parallel to the development of the comprehensive Master Plan with further improvements and amenities subsequently incorporated into the Greenway in accordance with the finalized Master Plan.

NJDEP aims to open the first segment of the Greenway by the end of 2025.

### Four components of Phase 1A:

#### STORMWATER

The Greenway will need to properly manage the water that falls onto its property. Effective stormwater management can help prevent flooding and erosion. By addressing localized stormwater, the Greenway can create a sustainable environment, support biodiversity, and enhance water quality. It's a crucial aspect that safeguards the long-term health and resilience of the Greenway.

#### REMEDIATION

Some portions of the Greenway may be affected by pollution or contamination due to former industrial uses. By remediating soils, water, or other impacted elements, we can create a healthy and safe environment for plants, animals, and people. This component of the plan will study where this remediation needs to occur.

#### SAFETY + SECURITY

By prioritizing the study of safety and security, we can create a welcoming environment where everyone can freely explore and appreciate the beauty of the future Greenway.

#### PHASED DEVELOPMENT

By phasing the overall development of the Greenway, some sections can be built while other sections are being designed - allowing earlier access to the project. The goal of this component of the plan is to decide where to start the Greenway and how future phases will be implemented.



# Public Workshop #1 & #2 – Event Materials

## GREENWAY ASSESSMENTS

### Where Do We Begin?

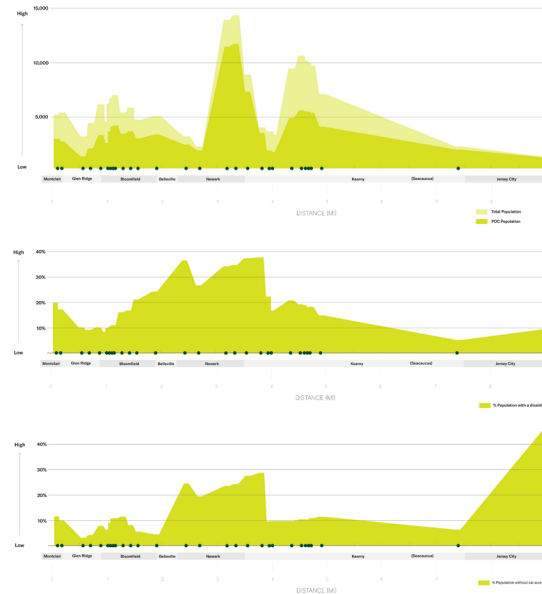


#### Where do we start to build the Greenway?

NJDEP intends to undertake development in discrete phases to prioritize early access in parallel to the broader master planning process.

By breaking it down into manageable phases, resources, time, and efforts can be used efficiently. Each phase allows for careful planning, execution, and evaluation, ensuring that the project is realized with ample opportunities for incorporating community feedback.

To begin, we need to understand the communities that surround the Greenway. Every community along its nine-miles are unique and have different needs and visions for what the greenway will be!



#### How should New Jersey start? Place your vote along the slider!

I want lots of things to do in a smaller area of greenway  
*More investment in a concentrated destination*

I want a little of both

I want to be connected to my neighbors near and far  
*Longer, Simplified Greenway*



## GREENWAY ASSESSMENTS

### Manage Water



#### What is Stormwater?

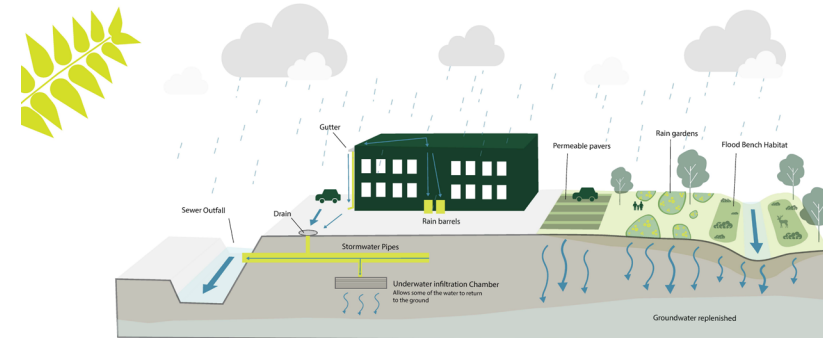
Stormwater refers to rain that falls during storm events. When a lot of rain falls at once, it can overwhelm urban drains, pipes and streams, leading to flooding. You might remember that Hurricane Ida, in 2021, flooded many communities along the Greenway.

#### Traditional Urban Stormwater Management

When rainwater falls on paved surfaces in the urban environment it often runs off into drains and pipes which eventually outlet into hardened waterways. We don't see the rainwater much unless the system gets overwhelmed and floods.

#### Integrated Stormwater Management

When stormwater management is integrated into landscape design, strategies like capturing water in rain barrels and rain gardens, allowing it to soak into the ground through permeable pavements and planted areas and slowing down the flow of urban streams makes the process visible and keeps each drop of rainwater closer to where it fell.



#### How do you want to manage water? Place your vote along the slider!

I want rainwater management to be out-of-sight and out-of-mind  
*underground pipes + chambers, invisible at surface*

I want to see a balance of both

I want the management of rainwater to be an integral part of the design of the Greenway  
*Highlight rain gardens + interpretive signage*





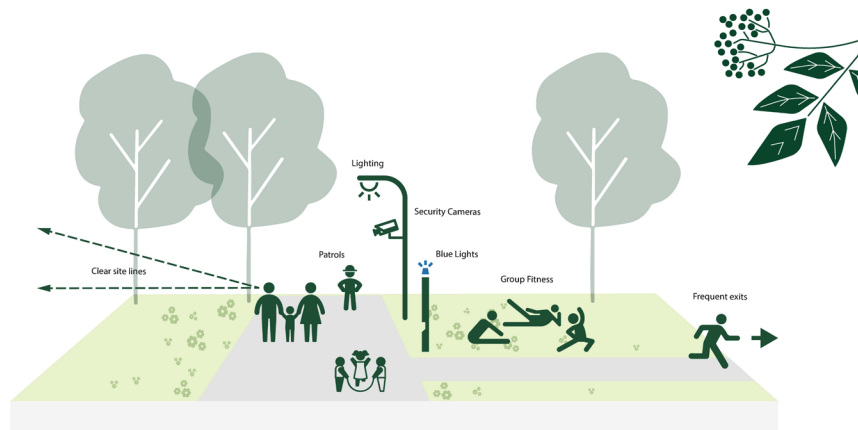
# Public Workshop #1 & #2 – Event Materials

## GREENWAY ASSESSMENTS Make it Safe



### Safety by Design

The Greenway can be designed to deter crime and provide a sense of safety. Quality lighting, clear lines of sight, and frequent exits are just a few potential design considerations that could create a safe environment for recreation.



### Safety in Numbers

When people are around, there are fewer opportunities for illicit activity. People keep an eye out and stand ready to assist if there is trouble. Park docents and/or safety patrol officers can provide an additional layer of law enforcement.

How do you want to create safety? Place your vote along the slider!

I want the physical design of the Greenway to promote safety  
*proper lighting, unobstructed sightlines, clear pathways and signage, control of landscape overgrowth, etc*

I want to see a balance of both

I want human presence and supervision to create a safe and secure environment  
*law enforcement personnel and surveillance systems*



## GREENWAY ASSESSMENTS Clean Up the Soils



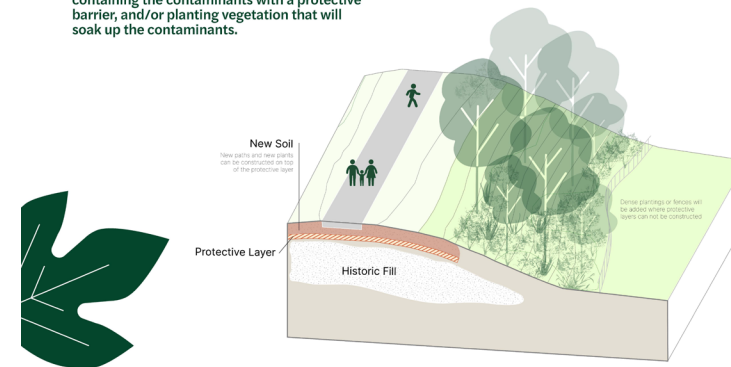
### Making Sure the Soil is Safe

Soil will be made safe for recreation along the entire length of the Greenway. Scientists will take soil samples and test them in a lab---if any samples show signs of contamination, those areas will undergo "remediation."

Remediation means dealing with environmental damage. This may entail removing the contaminants from the soil, containing the contaminants with a protective barrier, and/or planting vegetation that will soak up the contaminants.

### What's in the Soil?

The contents of the soil won't be known until soil samples are analyzed. But we know what to expect. In comparable sites, nearby industries have spilled oil-based products into the ground. Fill containing metals and other debris have been used to create the gentle slopes necessary for railroads. These are the types of contaminants that might be encountered.



Are you concerned about contamination? Place your vote along the slider!

I am not concerned at all about contamination (i.e. "dirty" dirt) along the Greenway

I feel a little of both

The issue of soil contamination is very top of mind for me - you'll have to convince me that the soils are safe (or have been remediated) before the Greenway opens



# Phase 1b: Initial Greenway Development – Design & Construction Management

## Design

Building from the Phase 1a deliverables, Consultant will work recommendations and next steps into Phase 1b design and manage direct engagement with construction contractors. Expect to utilize New Jersey Transit contractors to complete Phase 1b construction activities.

**Deadline:** December 31, 2023

### **Deliverable(s):**

- Scope of Work to hand off to construction contractors

Date	Item
8/11/23	Issue Design Coordination & Construction Management Mini-Bid
9/8/23	Award Design Coordination & Construction Management Mini-Bid
10/31/23	Location recommendation from firm based on stakeholder engagement and phased development work order
11/1/23	Design Coordination & Construction Management work order begins
12/31/23	Design complete and ready for construction

# Phase 1b: Initial Greenway Development – Design & Construction Management

## Construction

Construction team will take Scope of Work provided by Design Coordination & Construction Management consultants to begin stormwater engineering construction and remediation/capping along portions of the Greenway.

**Deadline:** By Spring 2024

**Deliverable(s):**

- Phase 1b development completed by end of 2025

Date	Item
TBD	Stormwater engineering construction begins
TBD	Remediation and capping begins
TBD	Stormwater engineering construction complete
TBD	Remediation and capping complete
TBD	Amenities construction begins (if applicable – may be delayed should we build option 1 or 2 from above)
TBD	Amenities construction complete (if applicable – may be delayed should we build option 1 or 2 from above)