

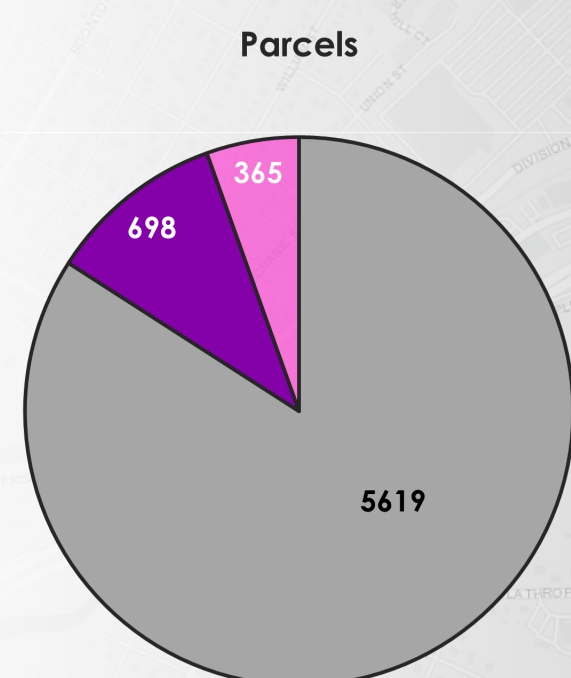
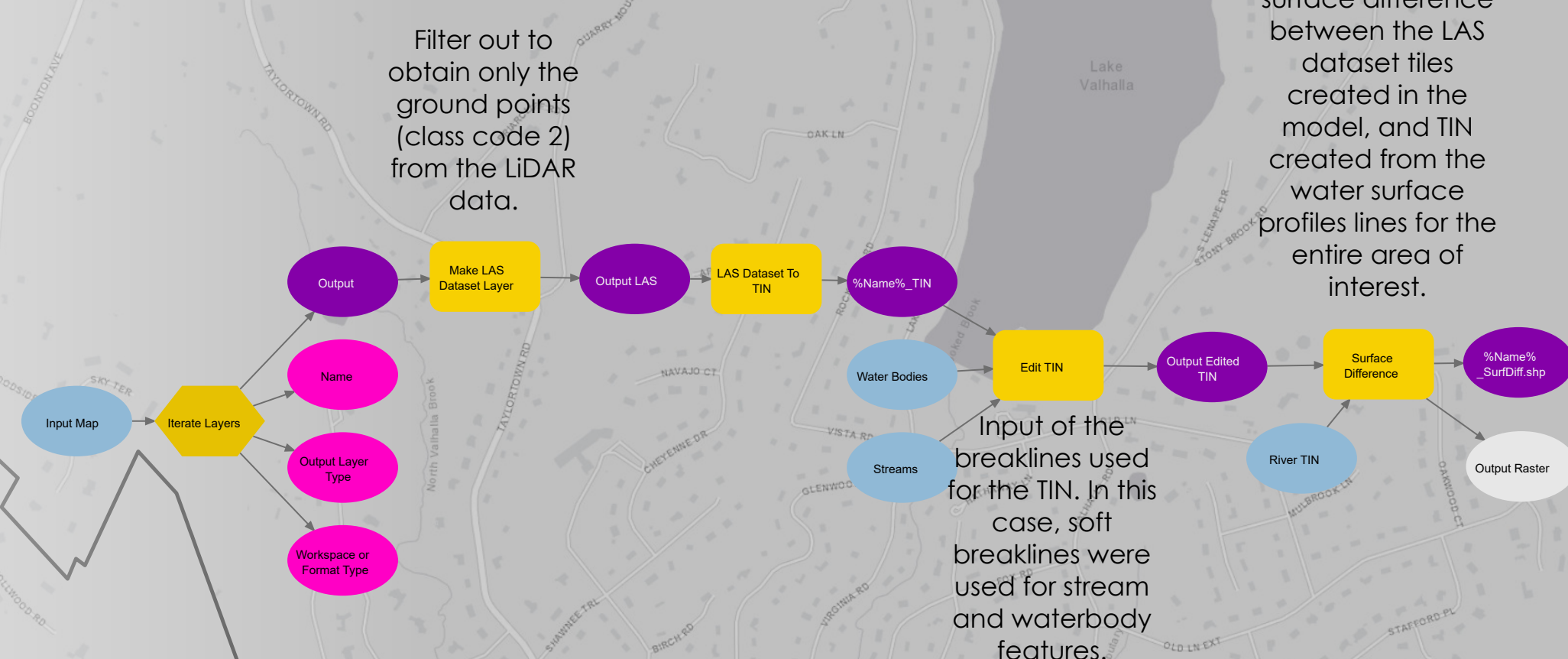
This map is not a regulatory document and should not be used for regulatory purposes.

It has been generated by Morris County GIS utilizing LIDAR data from the Northwest NJ 2018 LIDAR Project distributed by NJ Geographic Information Network (nGIN.nj.gov). The aforementioned LIDAR data was then ran through a series of in-house processes to develop a Digital Elevation Model (DEM) of the area. The resulting DEM was then used to aid in the creation of water surface profile lines that were manually created at intermittent intervals across all rivers, streams, canals, ponds and lakes within the project area. These water surface profile lines were then used to create a Triangulated Irregular Network (TIN) for the entirety of waterways in the given area of interest. Elevation data was collected from the TIN at intervals of 1 foot to enter the HIGHT used to create the existing Base Flood Elevation (BFE) to give us our starting point.

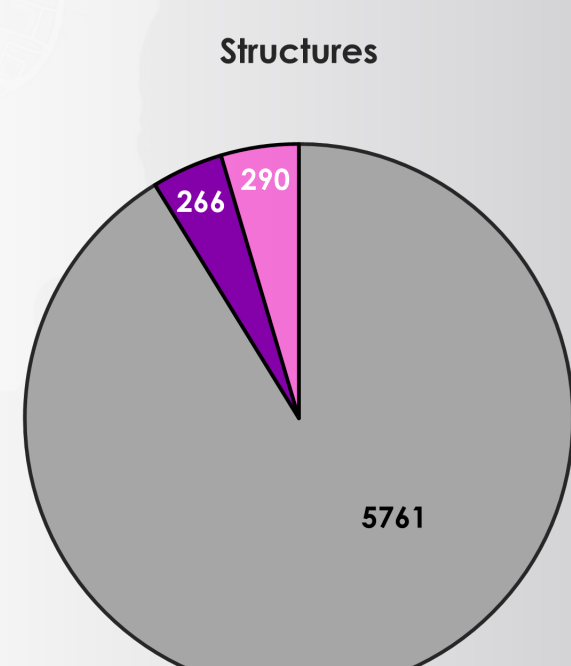
Once this height was established, an additional 3 feet was added onto the elevation to create our new estimated BFE. The BFE was then subtracted from the DEM that was created to make a polygon layer of the entire area that would be flooded given these parameters. To ensure a proper representation, only the polygons that intersected at least one of the above-listed water features were selected and dissolved together to create the resulting estimated BFE that is displayed in this map.

Parcels and structures were then intersected with this newly created BFE to create a selection of everything that falls into the new estimated flood zone. This selection was then run through another intersection, this time with the already established BFE to remove all parcels and structures that are already within the boundaries of the current BFE. Through this analysis, the remaining parcels and structures gives us our 'Estimated Newly-Effected' and 'Estimated Newly-Effectuated' structures. These are properties that were not within the previous BFE flood zone but now fall within the bounds of our new estimation.

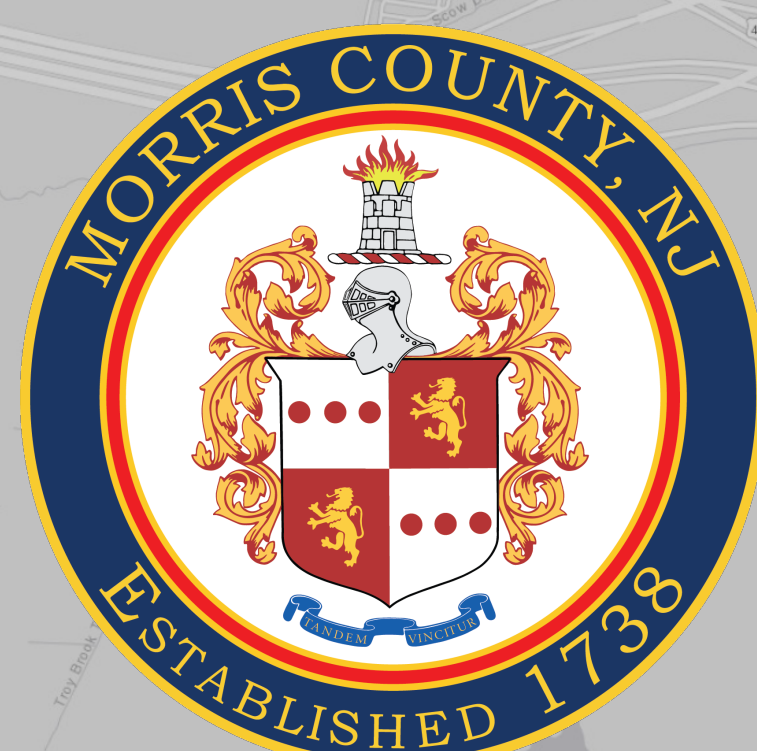
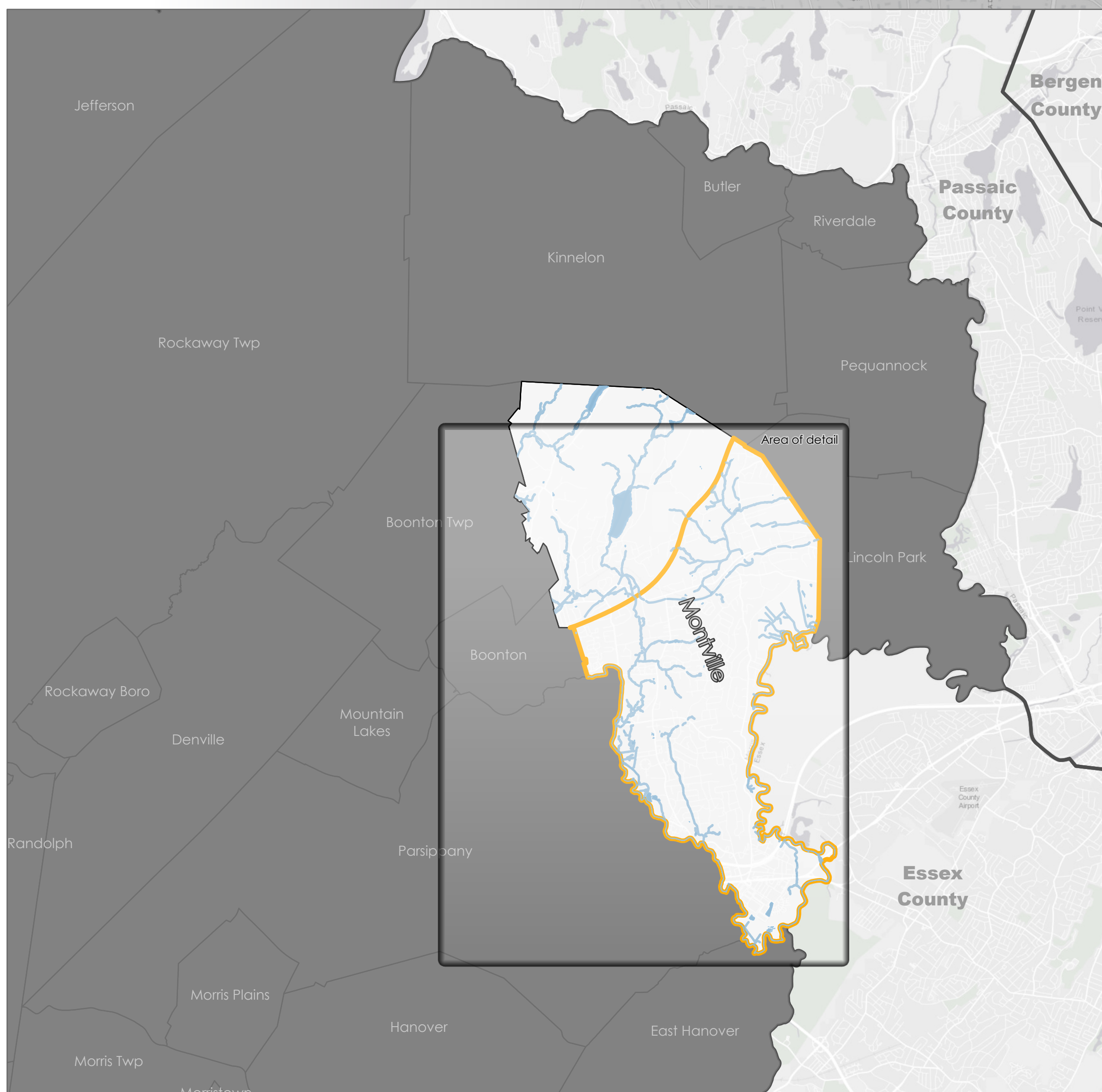
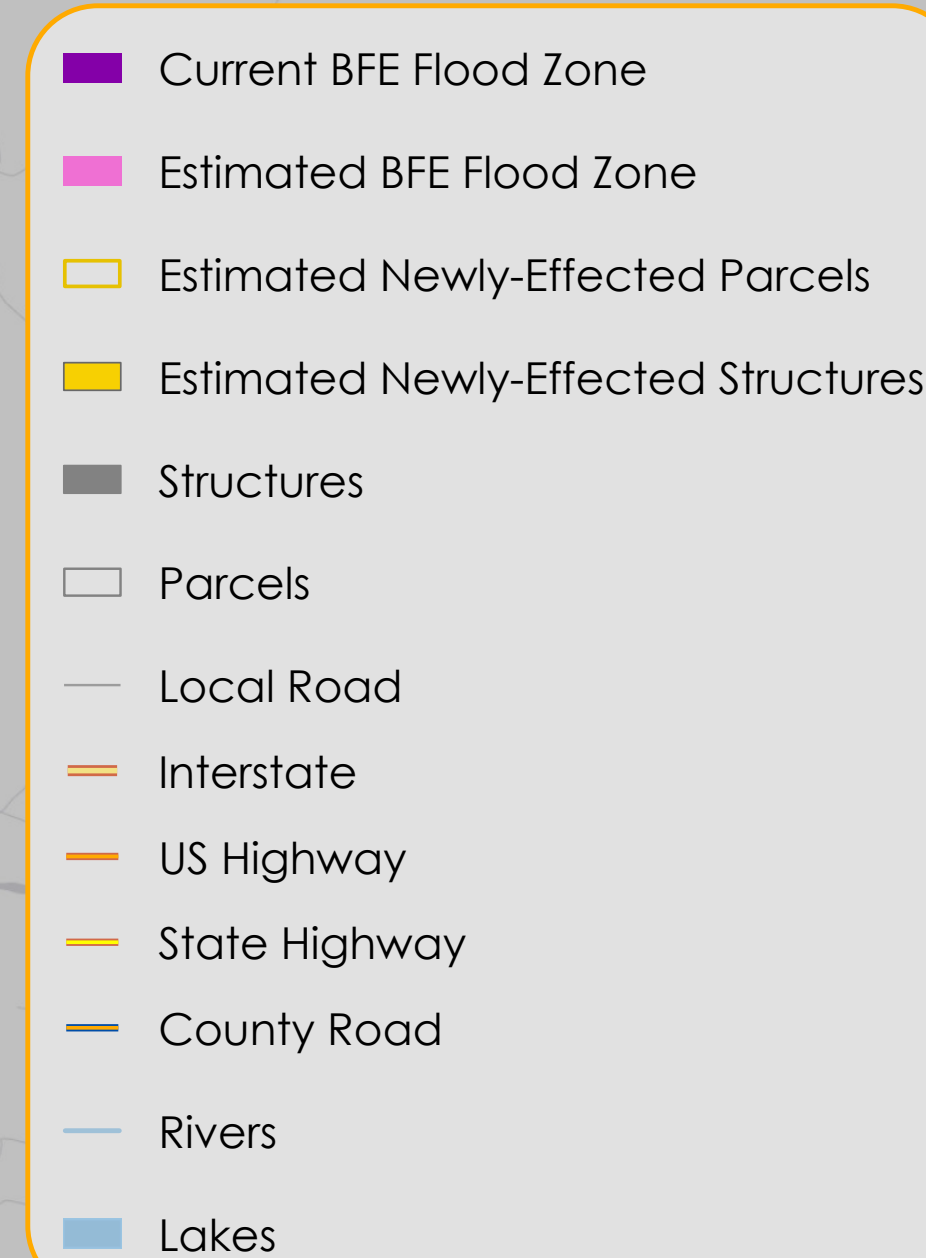
This analysis was performed by the County of Morris Department of GIS, and further in-depth documentation can be requested by emailing mcgis@co.morris.nj.us.



■ Not in a flood zone ■ Currently in BFE ■ Projected additional



■ Not in a flood zone ■ Currently in BFE ■ Projected additional



This flood map is provided "as-is" without warranty or any representation of accuracy, timeliness or completeness. The burden for determining accuracy, completeness, timeliness, merchantability and fitness for or the appropriateness for use rests solely on the user accessing this information. The County of Morris makes no warranties, express or implied, as to the use of the map. In no event shall the County of Morris or its officers or employees assume any liability for the accuracy of the data delineated on any map. In no event shall the County of Morris or its officers or employees be liable for any damages arising in any way out of the use of this information.

