



An output of the Decision Support System

Request #:
6050

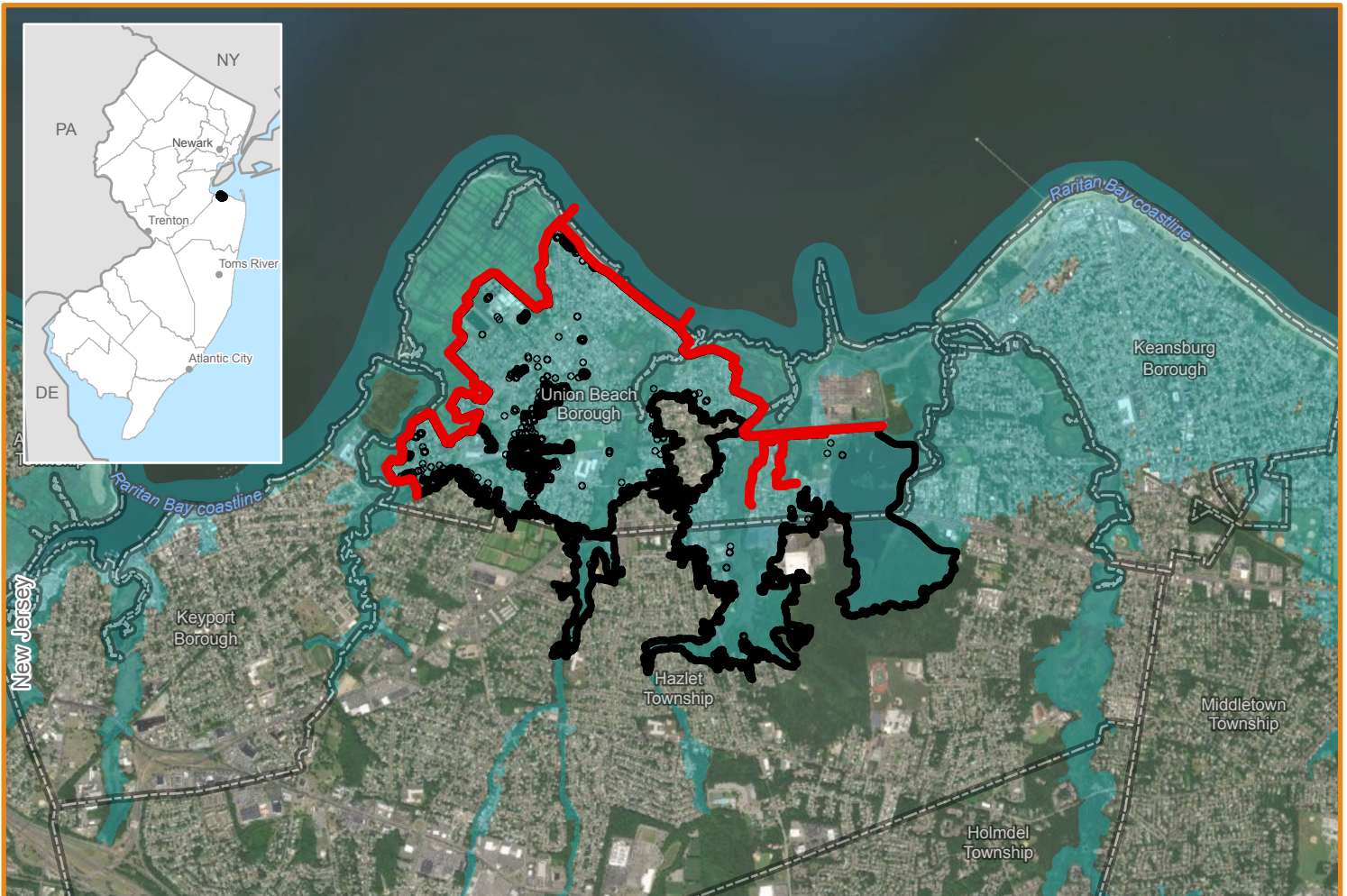
Alternative #:
6050-ALT-01

PROJECT DESCRIPTION

NAME	USACE Union Beach CSRM Project	TOTAL CONSTRUCTION COST	\$289,245,000.00
PROJECT TYPE	Floodwall, Levee, Beachfill, Drainage	FED COST SHARE	\$188,009,250.00
DESCRIPTION	Project consisting of a combo of levees, floodwalls, tide gates, pump stations and a dune/ beach berm w/ terminal groins.	STATE COST SHARE	\$75,926,812.00
PROJECT SIZE	20915 LF	LOCAL COST SHARE	\$25,308,938.00
APPLICATION SUBMITTED		OTHER COST SHARE	\$0.00
APPLICANT NAME	N/A	MAINTENANCE COST	\$1.3M/yr (O&M, Monitoring, &
PART OF A RESILIENCE PLAN	2003 USACE Feasibility Study& 2017 HSLRR	MAINTENANCE RESP PARTY	NJDEP-DCE
STORM SCENARIO USED	100-yr Storm (1% AEP)	STATUS	Design
SLR SCENARIO USED	0.7' from 2022 to 2072 (USACE Low Curve)	PROJECT NEED TIMEFRAME	Immediately
		SUPPORT	State & Municipal Support
		PROJECT DESIGN LIFE	50-yr

MAP

LOCATION MAP FOR THE USACE UNION BEACH CSRM PROJECT, UNION BEACH BORO, NJ



FLOOD RISK REDUCTION WITHIN PROJECT BENEFIT AREA

COMMUNITY BENEFIT SUMMARY

SOCIAL



15,052
PEOPLE

VULNERABILITY CATEGORIES

Below Poverty	1,045
Aged 65 or Older	2,165
Civilian with a Disability	2,062
Minority	3,017
No Vehicle	295
Multi-Unit Housing	299

ECONOMIC

NUMBER OF PROPERTIES

Residential	1,874
Apartment	1
Commercial	41
Industrial	3
Other	442

IMPROVEMENTS VALUE

\$300.1 M

\$474.8 K

\$12.8 M

\$38.9 M

\$46.4 M

PROPERTY TAX VALUE

\$12.5 M

\$15.4 K

\$800.6 K

\$1.3 M

\$497.8 K

NUMBER OF JOBS BASED ON EARNINGS/MONTH



< \$1,250/month	816
\$1,251- \$3,333/month	802
> \$3,333/month	1,648

COUNTY TOURISM REVENUE

Direct Sales	\$2,506 M
Direct Employment	\$23,103 M
Taxes	\$302 M

ENVIRONMENTAL



WETLANDS
Existing

218.4

Created/Restored

22

Impacted

22

**PARKS &
OPEN SPACE**

162

ACRES

PRIMARY HOMES



1,553/1,875

Homes

TRANSPORTATION INFRASTRUCTURE



24.0 Miles

Road & Rail

UTILITY ASSETS



2 Facilities

Water, Wastewater
Power & Communication

LOW TO MODERATE INCOME



4,225

Individuals

ESSENTIAL FACILITIES



8 Facilities

Fire, Police, Hospitals,
Ambulance, Schools

RESIDENTIAL VALUE

RESIDENTIAL VALUE

RESIDENTIAL APARTMENTS

(COUNT OF UNITS BY PER UNIT VALUE)

< \$100 K	34	0
\$100 K - \$200 K	431	5
\$200 K - \$300 K	925	0
\$300 K - \$500 K	518	0
> \$500 K	14	0

PROJECTS IN VICINITY

- (A) 6033: NY26 - Keansburg, East Keansburg, and La (1968- 2018)
- (A) 6047: NY30 - Port Monmouth Hurricane & Storm D (2014- 2064)
- (F) 4027: Union Beach Bulkhead Project (1994)

U = Unfunded; F = Funded; A = USACE Authorized Project

