



## IN THIS ISSUE

## Spotlight on Cultural and Historic Resources

## The Meadowlands District: Then and Now

## NEPA TIMELINE

## Key Milestones and Upcoming Events

July 6, 2016 Public Scoping Meeting	August 17, 2016 Final Public Scoping Document Published
September 20, 2016 CAG Meeting #4	October 24, 2016 CAG Meeting #5
December 6, 2016 CAG Meeting #6	January 31, 2017 CAG Meeting #7
March 29, 2017 CAG Meeting #8	May 24, 2017 CAG Meeting #9: NEPA Process and Biological Resources
<b>NEXT MEETING</b> June 27, 2017 CAG Meeting #10 Alternative 3 - Hybrid Alternative	

## Did you know...



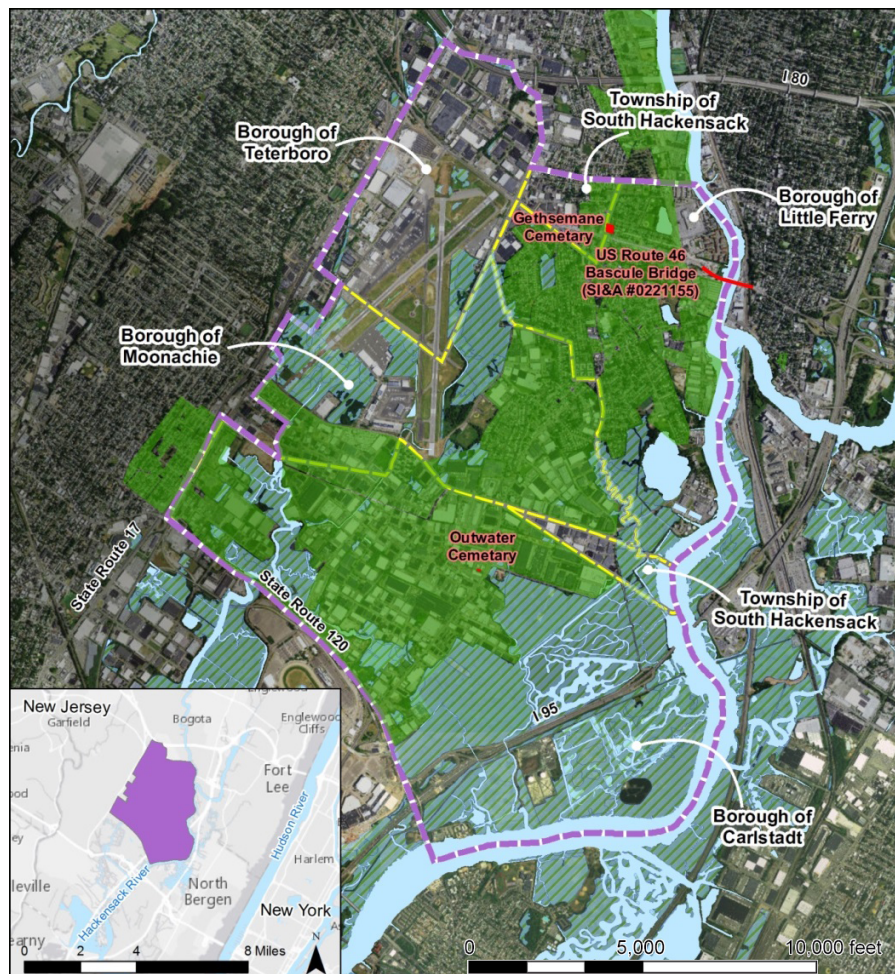
The U.S. Route 46 Bascule Bridge over the Hackensack River in Little Ferry was determined to be eligible for the National Register of Historic Places in 1997. Built in 1934, the bridge is a double-leaf deck-girder trunnion bascule bridge with two moving sections, which can open to allow boat traffic to pass. The U.S. Route 46 Bascule Bridge is technologically significant as an increasingly rare and well-preserved example of this style of bridge.

Please visit [www.rbd-meadowlands.nj.gov](http://www.rbd-meadowlands.nj.gov) to obtain current Proposed Project information and data, including confirmation of the above meeting dates.

## NEWS

May 2017

## Spotlight on Cultural and Historic Resources



**LEGEND** Project Area Water Historic Structure Municipal Boundary Wetland Green Zone

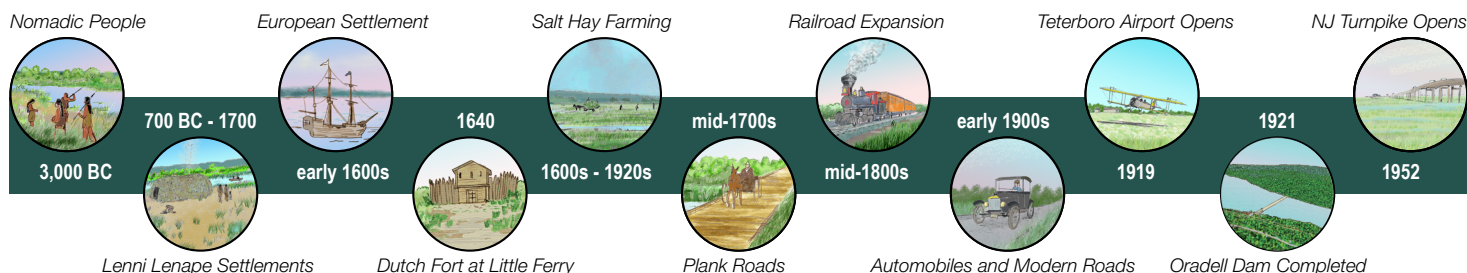


Map showing the Green Zone within the Project Area (described on page 2)

The Project Team is continuing the design concept screening process discussed in previous Rebuild By Design Meadowlands (RBDM) newsletters to evaluate the Proposed Project's preliminary flood protection concepts. One of the screening criteria used in this process is whether a concept may impact cultural resources, which include archaeological sites, and historic buildings, structures, districts, and objects as defined by the National Historic Preservation Act (NHPA) of 1966. Section 106 of the NHPA requires Federal agencies to consider the effect an undertaking, such as the RBDM Flood Protection Project, may have on cultural resources.

To support this evaluation, the Project Team conducted a thorough inventory of previously identified cultural resources in the Project Area, and identified other sensitive areas that may contain cultural resources of significance. This research was conducted for the periods both





A partial timeline of historic events in the Project Area

before European settlement (“prehistory”) and after European settlement (“history”) of the Meadowlands District. Information was obtained from the New Jersey Historic Preservation Office (NJHPO), the New Jersey State Museum, state and local libraries, historic maps, Geographic Information Systems (GIS) data, and previous research findings. The purpose of the research is to identify sensitive areas, such as significant buildings or archaeological sites that are important to the local history of the Project Area. During the research process, the Project Team also mapped the cultural resources in GIS to facilitate the design concept screening process and NEPA analysis.

A significant source of existing information about the cultural resources in the Project Area was collected during a survey by the NJHPO and Federal Emergency Management Agency as a part of Hurricane Sandy recovery efforts. They surveyed a considerable amount of the Project Area for above-ground cultural resources. They determined that large portions of the developed areas within the Project Area do not have potential for additional historic architectural properties, and therefore do not require further investigation. These areas are known as the Green Zone, which is shown on the map on the first page. In the next phase of investigation for the Proposed Project, the Project Team will conduct a field survey of the Project Area to locate possible cultural resources. This survey will concentrate on the undocumented areas outside the Green Zone, but also evaluate resources potentially missed during prior survey work. Surveys are designed in consultation with the NJHPO, and include photography, mapping, and documentation of resources with reports and/or state survey forms. The Project Team will also continue to consult with the NJHPO and other consulting parties to ensure thorough and complete inventory and analysis of culturally significant land, buildings, and structures that may be affected by the Proposed Project.

## The Meadowlands District: Then and Now

Although European settlement of the Meadowlands District began in the mid-1600s, the area remained rural for centuries. Eventually the small farming villages evolved into today’s highly developed boroughs. The Meadowlands District now includes large areas of residential, commercial and industrial development, and transportation infrastructure, such as roads, railroads, and bridges. Most of the built resources visible today were constructed after 1900. Earlier built resources generally have not survived, but several current major roadways follow the paths of plank roads or turnpikes laid centuries ago. For example, Bergen County Route 55 was originally known as the Pollifly Road, and State Route 120 was originally the New York and Paterson Turnpike.

With the exception of Carlstadt (incorporated in 1840), many of the municipalities that today constitute the Meadowlands District were formally incorporated in the early 1900s as development accelerated and the population grew. The spread of railroads during the late 1800s spurred development of both industrial and residential areas. After 1900, the introduction of automobiles and modern roads led to widespread suburbanization and industrial development in the Meadowlands District, eliminating the last of the farmland that once characterized the area. Understanding the area’s history is useful in determining how the Meadowlands District physically evolved over time, how humans used the land and waterways, and what sort of evidence prior generations may have left behind. This information also helps to interpret the historical significance of the many buildings and structures in the Project Area, and to evaluate the potential to find archaeological remains.

### Get involved!

- ✓ If you would like to become a member of the CAG, please contact Alexis Taylor at [rbd-meadowlands@dep.nj.gov](mailto:rbd-meadowlands@dep.nj.gov). NJDEP welcomes your participation and input into this process!
- ✓ Share information from this newsletter with friends and neighbors.
- ✓ Educate your friends and colleagues on the Proposed Project and NEPA process.
- ✓ Continue to build interest in the Proposed Project.
- ✓ Subscribe to receive email updates on the Proposed Project at: [www.rbd-meadowlands.nj.gov](http://www.rbd-meadowlands.nj.gov)



STATE OF NEW JERSEY  
DEPARTMENT OF ENVIRONMENTAL PROTECTION

