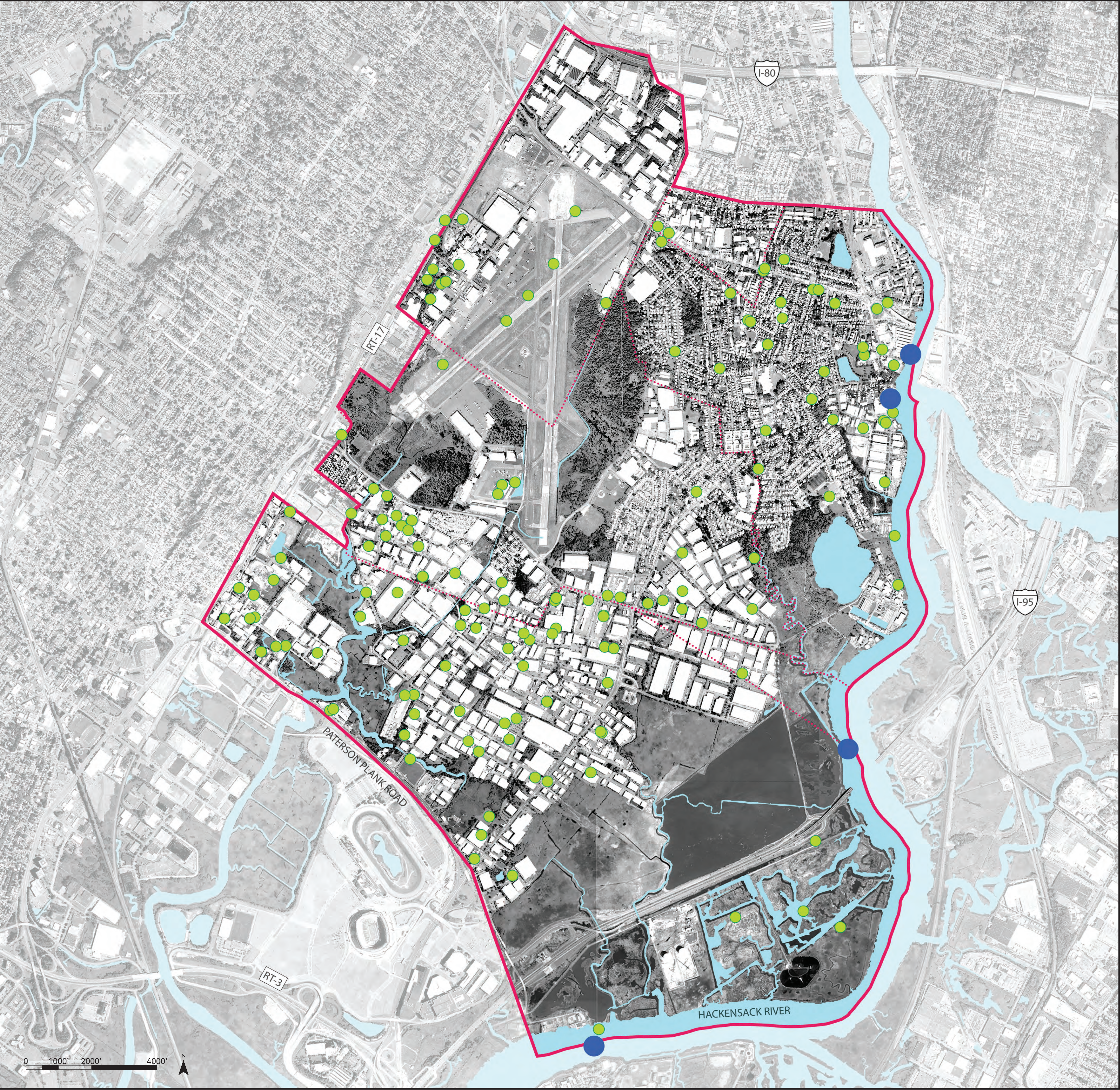


HAZARDOUS AND TOXIC MATERIALS + WASTE (HTMW) SITES

REBUILDBYDESIGN

MEADOWLANDS



LOCATION KEY

NJ NY

Not to Scale

LEGEND

- Project Boundary
- Water
- Municipal Boundary
- Water Quality Monitoring Sites
- Potentially Contaminated Sites

NOTE

Source:
U.S. Environmental Protection Agency
STORET/Water Quality Portal (March 2016)
New Jersey Department of Environmental Protection,
HAZSITE Electronic Data Interchange (April 2015)