



Subject	Meeting Minutes - Citizen Advisory Group (CAG) Meeting #10
Meeting Date	June 27, 2017
Scheduled Time	6:00 pm – 7:00 pm ET
Location	Port Authority Conference Room, 90 Moonachie Avenue, Teterboro, NJ 07608
Attendees	Attendee list available; <i>for internal use only</i>

- The PowerPoint slide presentation utilized at the meeting is attached to the meeting minutes (see **Attachment 1**).
- A CAG meeting packet was provided to all attendees and is also attached to the meeting minutes (see **Attachment 2**).
- Linda Fisher, New Jersey Department of Environmental Protection (NJDEP) Rebuild by Design Meadowlands (RBDM) Project Team Manager, started the meeting and provided a brief overview of the meeting agenda, and introduced Chris Benosky.
- Chris Benosky, AECOM's RBDM Program Manager, provided an overview of the meeting agenda and the Meadowlands Challenge. The Meadowlands Challenge is two-fold. It includes the need to address flooding of the Project Area from two different sources: (1) storm surge (tidal) flooding from the Hackensack River due to low elevations throughout the Project Area; and (2) interior flooding from rainfall events due to undersized and underperforming interior drainages and infrastructure in the Project Area. The Proposed Project is examining three Build Alternatives to address the Meadowlands Challenge: Alternative 1 would protect against storm surge flooding (i.e., Challenge #1); Alternative 2 would protect against stormwater flooding (i.e., Challenge #2); and Alternative 3 would be designed to protect against both storm surge and stormwater flooding (i.e., Challenges #1 and #2).
- Garrett Avery, AECOM's RBDM Project Manager, provided an overview of Alternative 1, which was last discussed during CAG Meeting #8. The RBDM Project Team is looking at ways to reduce construction costs, minimize disturbance to ecological systems, and enhance public park space, while providing a complete line of protection to protect the maximum amount of the Project Area.
- During the initial concept development phase of Alternative 1, eleven (11) alignment tie-in options were identified, which were presented at CAG Meeting #6. During the second phase of the concept development process, these concepts were reduced to 7 alignment tie-in options, and presented during CAG Meeting #8. The reduction was accomplished through a robust concept screening process that considered a variety of factors. Further screening of these 7 alignment tie-in options resulted in the identification of three final options.



- As a result of the concept screening process, the following Alternative 1 concepts were identified to carry forward into the Feasibility Study: Northeast Option #3, Southeast Option #2, and Berry's Creek Option #1. Northeast Option #3 provides approximately 1,500 linear feet more flood protection and allows the alignment to tie into the Riverwalk in the City of Hackensack. Southeast Option #2 extends along the south side of Commerce Boulevard. This option provides cost efficiencies and avoids impacts to the Kane Mitigation Bank berm. Berry's Creek Option #1 includes the development of a surge barrier. Berry's Creek Options #2 and #3 were screened out due to land acquisition costs and potentially significant environmental impacts.
- Lulu Loquidis, AECOM's RBDM Landscape Designer, provided an overview of Alternative 2, which was last discussed at CAG Meeting #7. Under Alternative 2, the RBDM Project Team is looking at ways to convey stormwater away from flood-prone areas within the Project Area by deepening and regrading existing channels, improving water quality and enhancing habitat through native plantings and natural channel design, and enhancing public parks and other municipal lands through the creation of new parks, open spaces, and recreational areas.
- During the Alternative 2 concept development process, the RBDM Project Team analyzed the 7 initial Alternative 2 concepts presented at CAG Meeting #7 further, and examined the benefits associated with the specific components of each concept. Through this process, the Team identified several components from the original 7 concepts that are currently under consideration for inclusion in Alternative 2. These components include new park space, green infrastructure along roadways, channel improvements, and new pump stations from the original Main Street, DePeyster Creek, Losen Slote, Carol Place, and East Riser concepts.
- Mr. Avery provided an overview of the considerations that went into building the Hybrid Alternative (Alternative 3), which included the results of hydraulic modeling, the Proposed Project timeline, and environmental impacts. The Team is developing the Hybrid Alternative from components previously assessed and screened under Alternatives 1 and 2. For Alternative 3, the Team is evaluating each component in conjunction with the Proposed Project timeline, which requires the Proposed Project to be complete by September 2022. Components that cannot be carried forward in the Build Plan due to timeline constraints could become elements of a Future Plan, and implemented by others over time as new funding sources become available.
- The NJDEP Project Team is in the process of examining how different combinations of Alternative 1 and 2 components could work together as a larger system. The Team presented two examples of how these systems could work together hydrologically, while also meeting the goals of the Proposed Project.



- During the initial Alternative 3 concept development process, the Team determined that some components are fixed, while others are flexible. For example, the Alternative 1 alignment is fixed as it functions as one complete system, while the Alternative 2 stormwater strategies are flexible. This means that various Alternative 2 strategies can both function in a combined fashion or individually, with various combinations possible.
- Mr. Avery and Ms. Loquidis presented three Hybrid Alternative concepts, including the: Channel Focus Concept, Community Focus Concept, and Complete System Concept.
 1. The Channel Focus Concept emphasizes channel widening and deepening to improve conveyance capacity, and includes the addition of an ecological edge along these channels to improve water quality and habitat.
 2. The Community Focus Concept centers on improving public services and providing community benefits. It could include green infrastructure features (e.g., curb cutouts or bioswales) along the main roadways in conjunction with Hackensack River access and educational opportunities.
 3. The Complete System Concept would incorporate all of the above features. This concept would connect the various flood protection, stormwater management, habitat improvement, and open space features into one large, integrated system.
- Mr. Benosky then provided an overview of the next steps. The RBDM Project Team will continue to develop and refine the concepts, alternatives, and costs. The next CAG meeting will be in **September 2017**. CAG members were encouraged to continue to build interest in the Proposed Project and to visit the Proposed Project website at www.rbd-meadowlands.nj.gov or email questions to rbd-meadowlands@dep.nj.gov for more information. Mr. Benosky informed the CAG Members that the RBDM Project Team is interested in obtaining feedback from the CAG Members as the Proposed Project continues to move forward. Please provide all comments and input to NJDEP concerning CAG Meeting #10 by **July 11, 2017**.
- Following the completion of the presentation, the CAG Members posed the following questions and comments:
 1. Is the 7-foot elevation for the Alternative 1 line of protection final?

Response: As a result of the Alternative 1 screening process, the 7-foot elevation (NAVD 88) line of protection was identified as the feasible solution based on cost, schedule, and the topography of the Project Area.
 2. Would Alternative 1 protect against another Hurricane Sandy?



Response: No. The Proposed Project would only protect the Project Area up to an approximately 50-year storm event (without sea level rise). However, it would also provide some interior drainage improvements (i.e., pump stations).

3. What's the soonest we can expect to see something built?

Response: It is anticipated that construction bids would be issued in 2019. The Proposed Project would be completed by September 2022.

4. Where will the force main and pump station be located on Losen Slote under Alternative 2 (i.e., Component #3)?

Response: The location of the pump station and force main are still under development. The force main may be located below the channel or it may be routed on adjacent public roads to eliminate maintenance issues. The exact location and length of the force main will be determined based on the modeling results. However, it will likely be located upstream to push water downstream to the existing pump station.

5. I live on Chapman Drive near the downstream pump station along Losen Slote. I have never experienced flooding except during Hurricane Sandy. How would the downstream pump station be affected with the addition of a new upstream pump station?

Response: Operations and maintenance (O&M) measures would be put in place at the upstream pump station to prevent flooding downstream in the event the downstream pump station stopped working properly.

6. During a recent rain event, we noticed that Losen Slote had plenty of capacity downstream. However, water conveyance appeared to be restricted upstream.

Response: Alternative 2 is looking at solving this particular issue.

7. Have you considered using Mehrhof Pond as a bypass to detour excess water in the Project Area temporarily? This pond has additional storage capacity.

Response: The Project Team is exploring this option; it is still going through the screening process.

8. Do you coordinate with the Bergen County Utilities Authority (BCUA)? They were going to implement flood control measures for their facility. How is this being considered in the Proposed Project's design?

Response: Yes. The NJDEP Project Team meets with the BCUA regularly. However, we are not sure if BCUA still intends to implement this plan and if this would occur prior to the Proposed Project being implemented.



9. Losen Slote is being kept purposefully low because they are dredging in the area, but the equipment is getting stuck. The drainage in the Project Area needs to be improved as soon as possible. The pipes, culverts, and drainages need to be cleared of sediment.

Response: We understand and agree that drainage needs to be improved in the Project Area as soon as possible.

10. AECOM/NJDEP is doing a good job of looking out for us. Thank you for your hard work and willingness to help.

Response: Thank you.

The meeting adjourned at 6:55 pm ET.

Attachment 1.
Power Point Slide Presentation (as delivered)

REBUILDBYDESIGN

MEADOWLANDS

CITIZENS ADVISORY GROUP MEETING #10

ALTERNATIVE 3: HYBRID

June 27, 2017

AGENDA

Christopher Benosky, AECOM

2



- Welcome
- The Meadowlands Challenge
- Concept Review
 - Alternative 1
 - Alternative 2
- Building the Hybrid
 - Development Process
 - Initial Ideas
 - Building Blocks
- Next Steps
- Question & Answer



REBUILD BY DESIGN MEADOWLANDS

CAG Meeting #10 // June 27, 2017

AECOM

THE MEADOWLANDS CHALLENGE

CHALLENGE 1: **STORM SURGE FLOODING**

3



REBUILD BY DESIGN MEADOWLANDS

CAG Meeting #10 // June 27, 2017

AECOM

THE MEADOWLANDS CHALLENGE

FACTOR: **LOW-LYING ELEVATIONS**

4



REBUILD BY DESIGN MEADOWLANDS

CAG Meeting #10 // June 27, 2017

AECOM

THE MEADOWLANDS CHALLENGE

CHALLENGE 2: FREQUENT RAIN STORMS FLOOD INTERIOR

5



REBUILD BY DESIGN MEADOWLANDS

CAG Meeting #10 // June 27, 2017

AECOM

THE MEADOWLANDS CHALLENGE

FACTOR: UNDERSIZED & UNDERPERFORMING INTERIOR DRAINAGE

6



REBUILD BY DESIGN MEADOWLANDS

CAG Meeting #10 // June 27, 2017

AECOM

THE MEADOWLANDS CHALLENGE

FACTOR: **INFRASTRUCTURE CHALLENGED TO PUMP & PROTECT**

7



REBUILD BY DESIGN MEADOWLANDS

CAG Meeting #10 // June 27, 2017

AECOM

THE MEADOWLANDS CHALLENGE

PROJECT STRATEGY: DEVELOP 3 BUILD ALTERNATIVES

8



Alternative 1:
Storm Surge
Flooding



Alternative 2:
Stormwater
Flooding



Alternative 3:
Storm Surge &
Stormwater Flooding



REBUILD BY DESIGN MEADOWLANDS

CAG Meeting #10 // June 27, 2017

AECOM

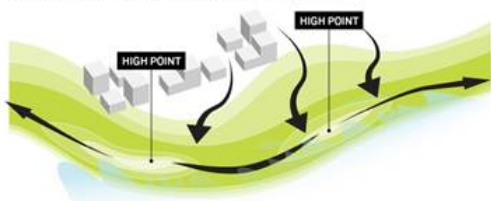
HYBRID BUILDING BLOCKS

ALTERNATIVE 1: STORM SURGE FLOODING

GARRETT AVERY, AECOM

HYBRID BUILDING BLOCKS // STORM SURGE APPROACH & GOALS

10



FILL THE GAPS // MAXIMIZE PROTECTION

PROTECT

By connecting the existing topographical high points, the project can reduce construction costs and minimize additional regrading of the Hackensack River edge.



INTEGRATE ECOLOGICAL SOLUTIONS

CULTIVATE

The ecological systems are essential to the Meadowlands. The approach will minimize disturbance, consider habitat improvements to fragmented systems, and creation of new ecological zones.



LEVERAGE PUBLIC LAND

ENERGIZE

With numerous public agencies in the project area, the project seeks to connect existing public parks as well as provide new park space on existing public land.



REBUILD BY DESIGN MEADOWLANDS

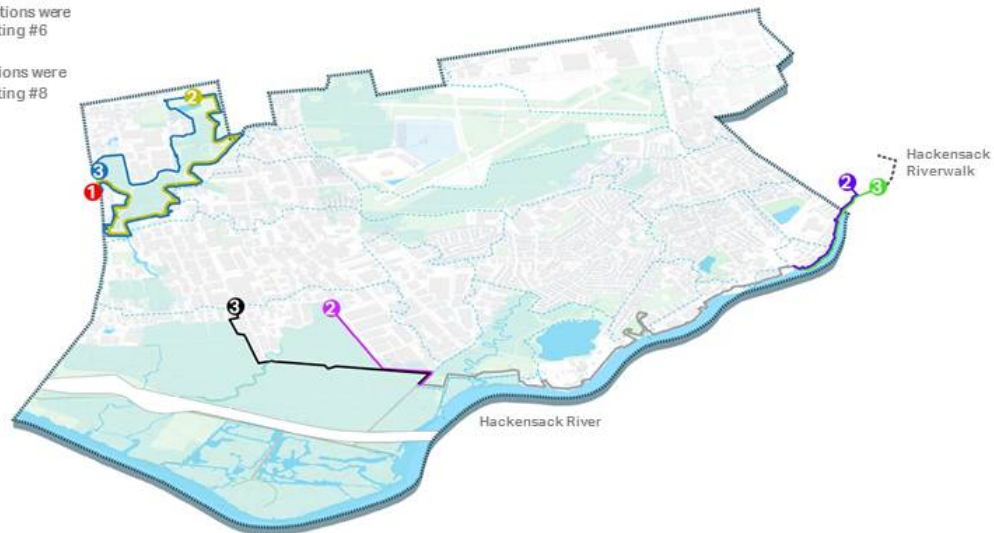
CAG Meeting #10 // June 27, 2017

AECOM

HYBRID BUILDING BLOCKS // STORM SURGE CONCEPTS CONSIDERED DURING SECOND SCREENING

11

- 11 Alignment Tie-In options were presented at CAG Meeting #6
- 7 Alignment Tie-In options were presented at CAG Meeting #8



REBUILD BY DESIGN MEADOWLANDS

CAG Meeting #10 // June 27, 2017

AECOM

HYBRID BUILDING BLOCKS // STORM SURGE SCREENING RESULTS: SELECTED LINE OF PROTECTION

12

Selected Line of Protection:

- Northeast Tie-In Option 3
- Southeast Tie-In Option 2
- Berry's Creek Option 1



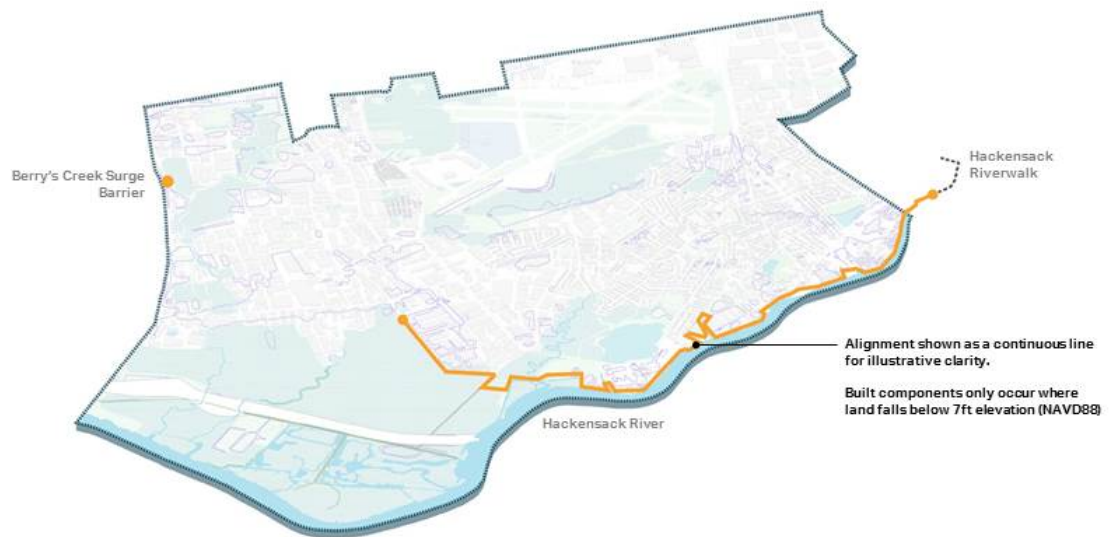
REBUILD BY DESIGN MEADOWLANDS

CAG Meeting #10 // June 27, 2017

AECOM

HYBRID BUILDING BLOCKS // STORM SURGE PROTECTION TO A ~50 YEAR STORM

13



REBUILD BY DESIGN MEADOWLANDS

CAG Meeting #10 // June 27, 2017

AECOM

HYBRID BUILDING BLOCKS ALTERNATIVE 2: STORMWATER LULU LOQUIDIS, AECOM

HYBRID BUILDING BLOCKS // STORMWATER APPROACH & GOALS

15



IMPROVE CHANNELS

PROTECT

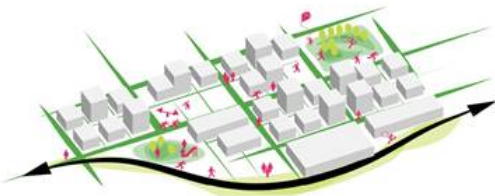
Through deepening and regrading, the existing channels of the project area will have capacity to convey stormwater away from flood-prone areas



CREATE HABITAT // FILTER POLLUTANTS

CULTIVATE

Native plantings and naturalized channel edges provide habitat and improve water quality.



RE-ENERGIZE THE PUBLIC REALM

ENERGIZE

The creation of new public parks creates more opportunities for gathering and recreation. The public realm is enhanced by providing landscape and park improvements to existing public parks, municipal buildings, schools yards, and libraries.



REBUILD BY DESIGN MEADOWLANDS

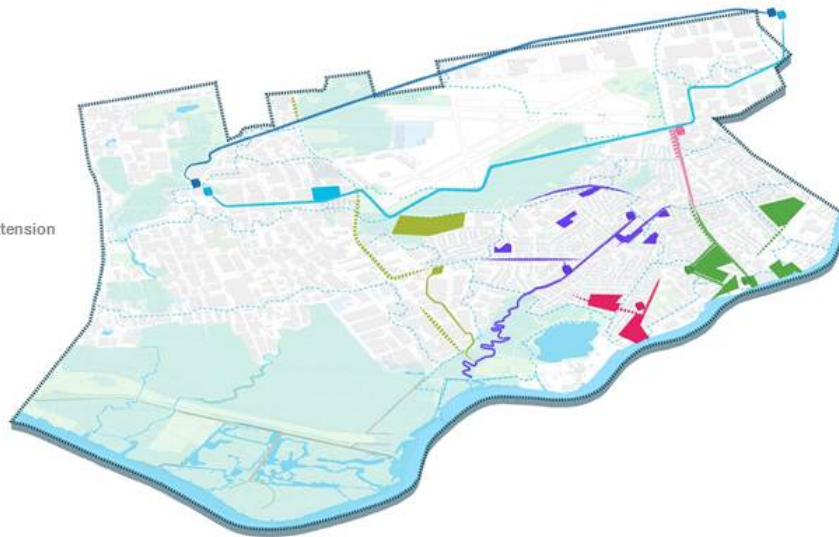
CAG Meeting #10 // June 27, 2017

AECOM

HYBRID BUILDING BLOCKS // STORMWATER ALTERNATIVE 2: SCREENING FROM 7

16

- Main Street
- DePeyster Creek
- Losen Slote
- Carol Place
- East Riser
- West Riser
- Main Street + East Riser Extension



REBUILD BY DESIGN MEADOWLANDS

CAG Meeting #10 // June 27, 2017

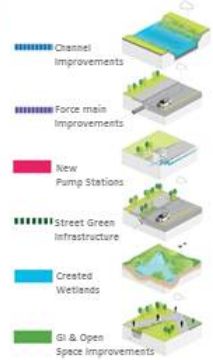
AECOM

HYBRID BUILDING BLOCKS // STORMWATER ALTERNATIVE 2: COMPONENTS UNDER CONSIDERATION

17

Components of the 7 original concepts under consideration:

1. Main Street Green Features
 - Fluvial Park
 - Riverside Park
 - Willow Lake GI
 - Street GI
2. DePeyster Features
 - New Pump Station
 - Channel Improvements
 - Open Space
 - Street GI
3. Losen Slote Features
 - New Pump Station
 - Force Main
 - Municipal & School Improvements
4. Carol Place Features
 - Open Space
 - Street GI
5. East Riser Features
 - New Pump Station
 - Open Space
 - Channel Improvements



REBUILD BY DESIGN MEADOWLANDS

CAG Meeting #10 // June 27, 2017

AECOM

BUILDING THE HYBRID

INTEGRATING STORM SURGE FLOOD REDUCTION AND
STORMWATER DRAINAGE IMPROVEMENTS
GARRETT AVERY, AECOM

BUILDING THE HYBRID CONSIDERATIONS

19



Performance

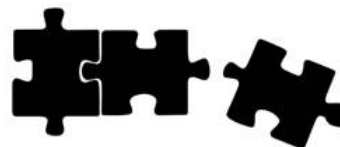
Testing concepts throughout development with hydraulic model to better understand and optimize performance.



Screening

The Hybrid is being developed from components previously assessed and screened under Alt 1 or Alt 2.

For Alternative 3, criteria such as 'Ability to Complete Project by 2022' take on new meaning.



Future Plan

Once performance modeling and screening are complete, system function will guide a project build plan.

Components that aren't selected for the build plan could become elements of a Future Plan, which could be implemented by others over time as new funding sources become available.



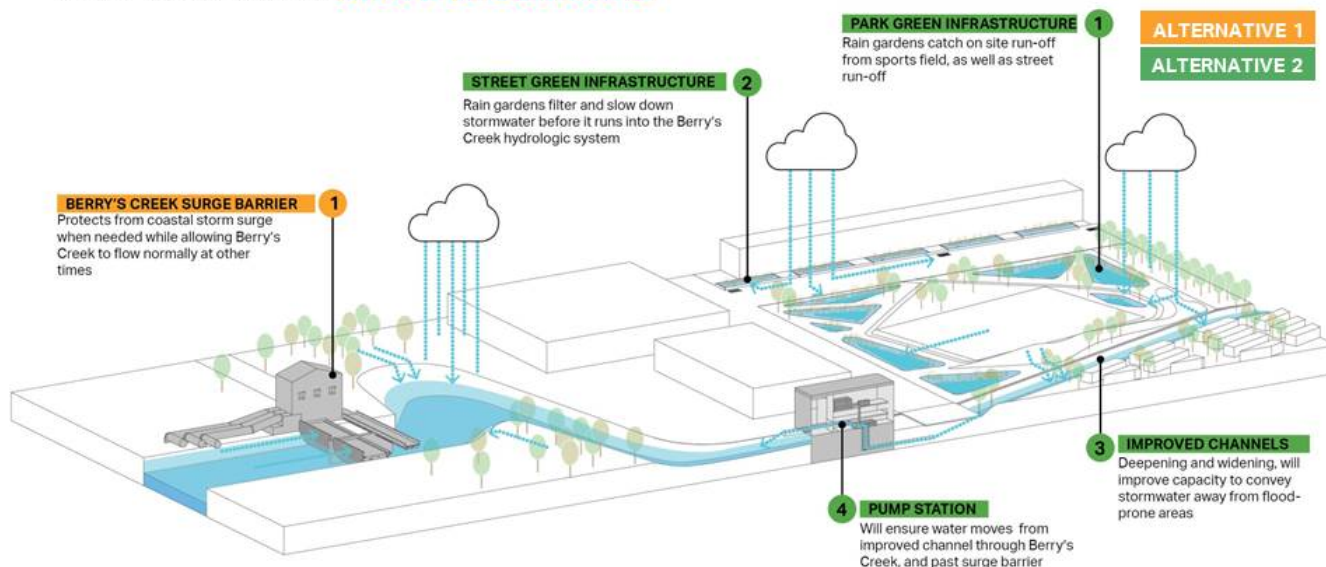
REBUILD BY DESIGN MEADOWLANDS

CAG Meeting #10 // June 27, 2017

AECOM

BUILDING THE HYBRID PERFORMANCE // CHANNELS & PARKS

20



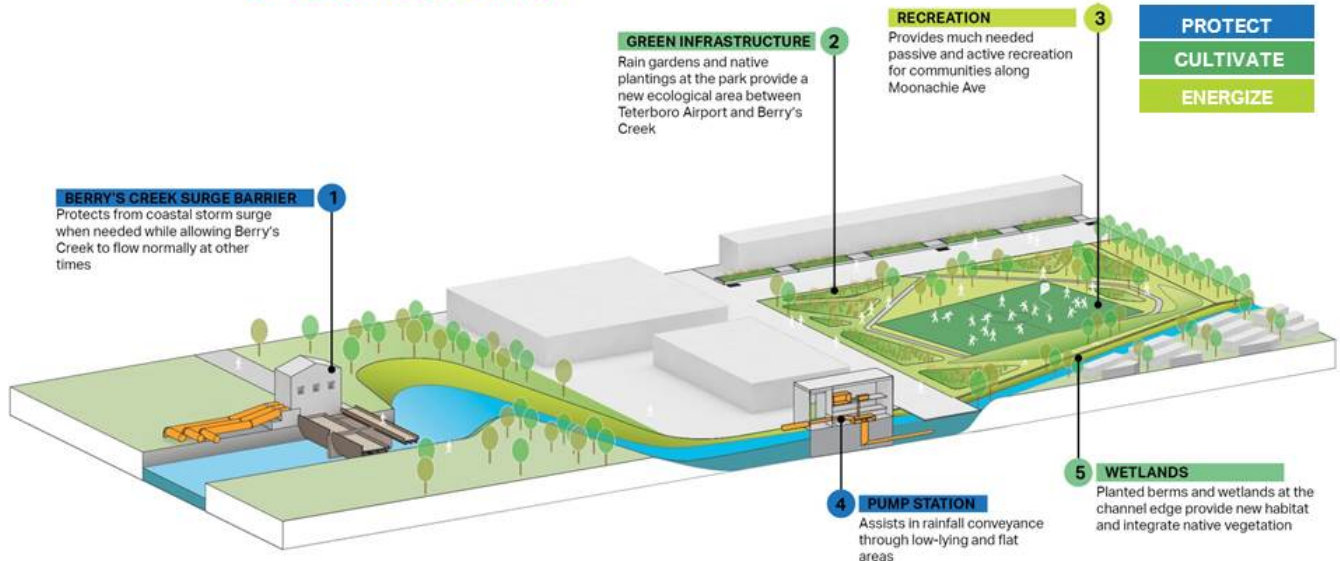
REBUILD BY DESIGN MEADOWLANDS

CAG Meeting #10 // June 27, 2017

AECOM

BUILDING THE HYBRID BENEFITS // CHANNELS & PARKS

21



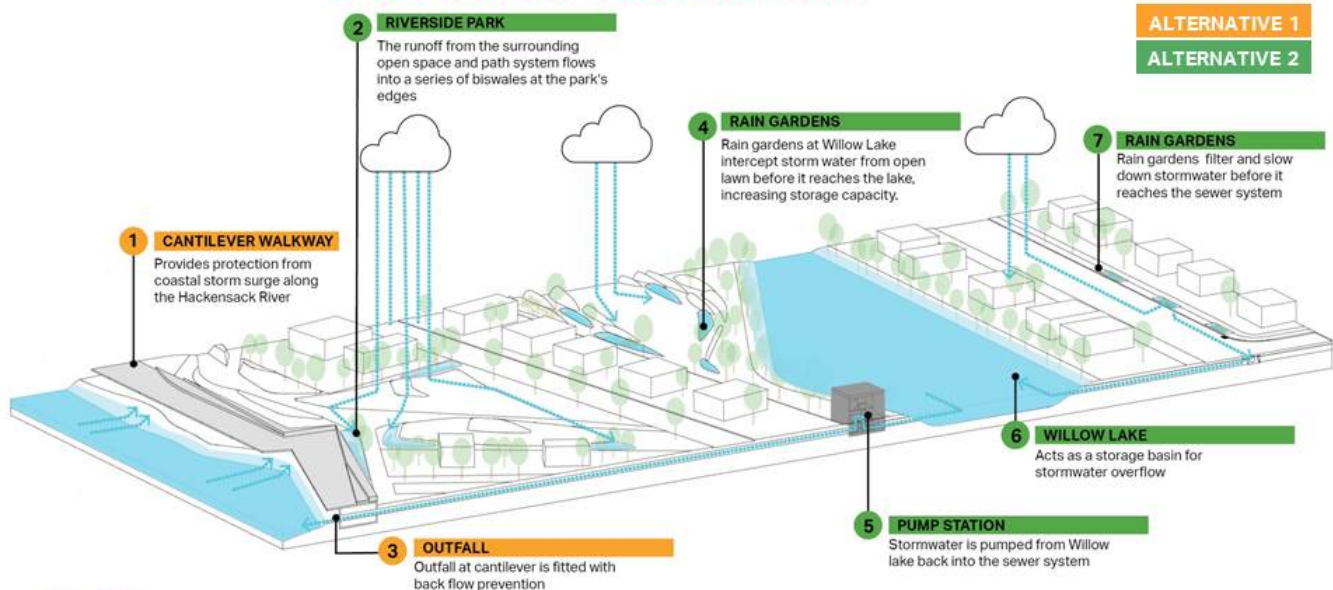
REBUILD BY DESIGN MEADOWLANDS

CAG Meeting #10 // June 27, 2017

AECOM

BUILDING THE HYBRID PERFORMANCE // RIVER'S EDGE & NEIGHBORHOODS

22



REBUILD BY DESIGN MEADOWLANDS

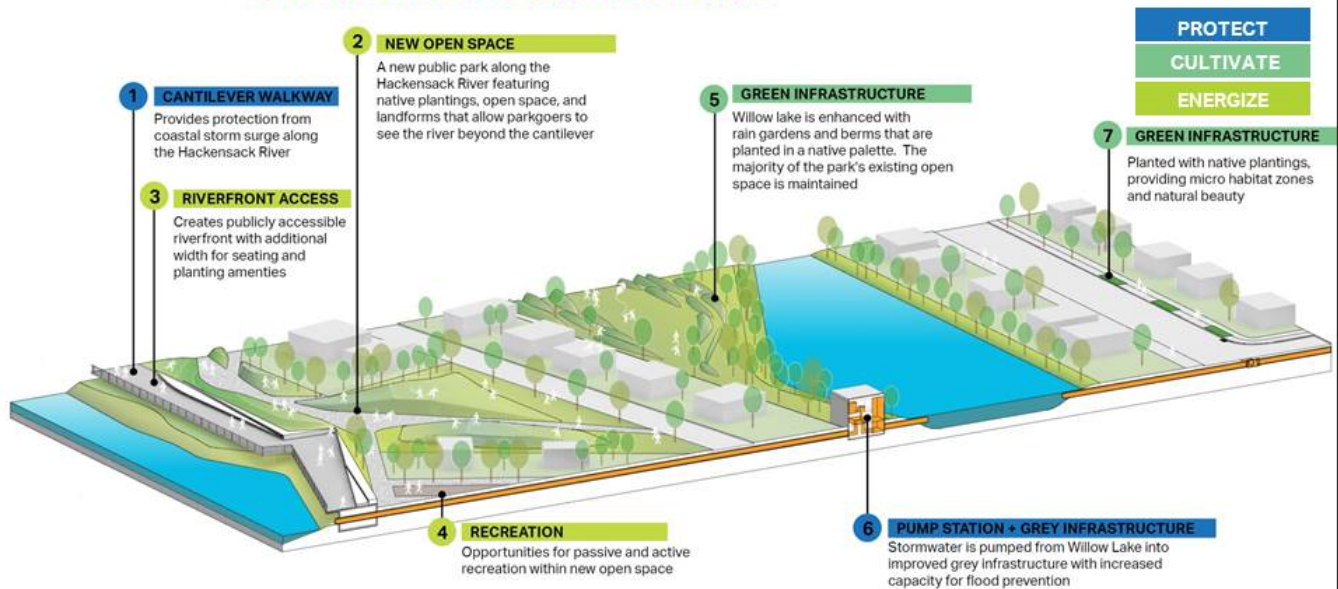
CAG Meeting #10 // June 27, 2017

AECOM

BUILDING THE HYBRID

BENEFITS // RIVER'S EDGE & NEIGHBORHOODS

23



REBUILD BY DESIGN MEADOWLANDS

CAG Meeting #10 // June 27, 2017

AECOM

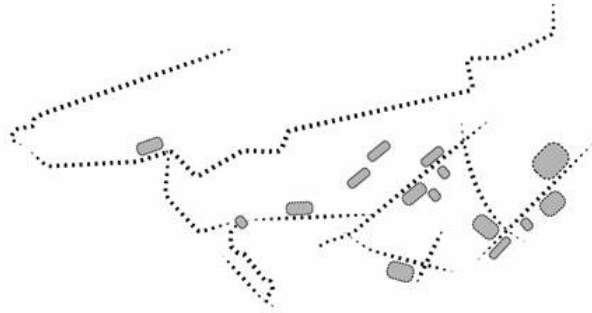
INITIAL IDEAS

CONNECTING THE BUILDING BLOCKS
GARRETT AVERY & LULU LOQUIDIS, AECOM

BUILDING THE HYBRID FIXED & FLEXIBLE

25

● Berry's Creek
Surge Barrier



Fixed: Alt 1

- Protection height at 7' elevation
- Alignment functions as a complete system
- Footprint remains the same with integrated public realm strategies

Flexible: Alt 2

- Stormwater strategies function together as one complete system and individually as an single improvement
- Concepts can be broken into smaller projects based on system performance
- Costs vary by system configuration



REBUILD BY DESIGN MEADOWLANDS

CAG Meeting #10 // June 27, 2017

AECOM

BUILDING THE HYBRID CHANNEL FOCUS CONCEPT

26

Maximize ecological and conveyance capacity
along channels and public realm integration
along structural protection corridors.



PROTECT
CULTIVATE
ENERGIZE



REBUILD BY DESIGN MEADOWLANDS

CAG Meeting #10 // June 27, 2017

AECOM

BUILDING THE HYBRID CHANNEL FOCUS CONCEPT

27

FEATURES INCLUDED

Alternative 1:

1. Hackensack Alignment
2. Surge Barrier @ Berry's Creek

Alternative 2:

1. All Main Street Green Features
2. DePeyster Creek Open Space
3. Upper Losen Slote
4. Avanti Park
5. East Riser Ditch Extension
6. Caesar Place
7. Green Infrastructure Street Improvements
8. West Riser Extension



ALTERNATIVE 1
ALTERNATIVE 2



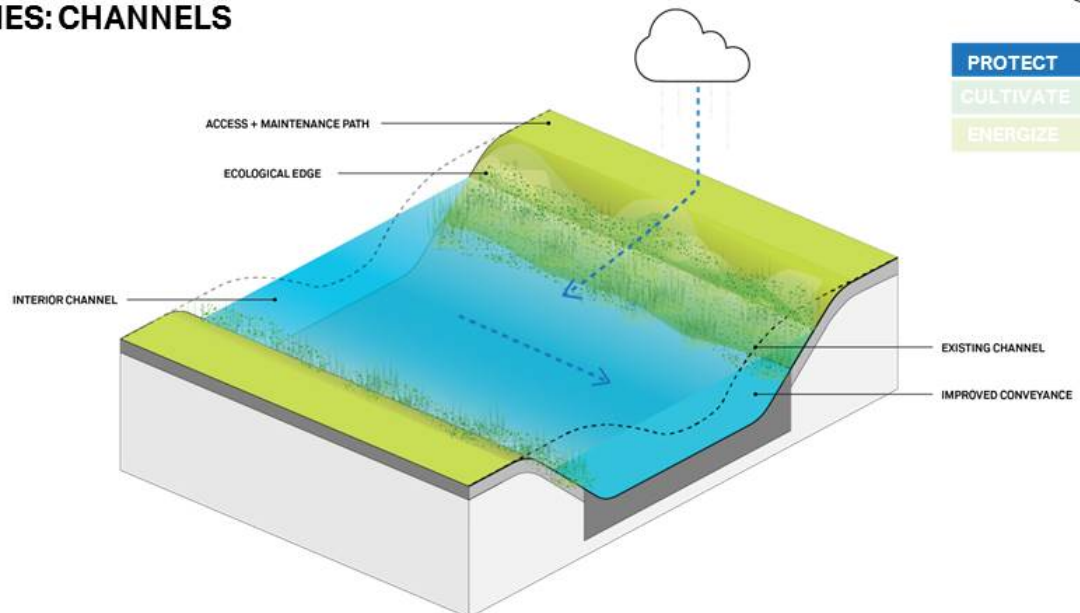
REBUILD BY DESIGN MEADOWLANDS

CAG Meeting #10 // June 27, 2017

AECOM

HYBRID BUILDING BLOCKS // STORMWATER STRATEGIES: CHANNELS

28



PROTECT
CULTIVATE
ENERGIZE



REBUILD BY DESIGN MEADOWLANDS

CAG Meeting #10 // June 27, 2017

AECOM

HYBRID BUILDING BLOCKS // CHANNELS

ILLUSTRATIVE VIEW: EXISTING CHANNEL CONDITION

29



CURRENT



REBUILD BY DESIGN MEADOWLANDS

CAG Meeting #10 // June 27, 2017

AECOM

HYBRID BUILDING BLOCKS // CHANNELS

ILLUSTRATIVE VIEW: PROPOSE CHANNEL IMPROVEMENTS

30



PROPOSED



REBUILD BY DESIGN MEADOWLANDS

CAG Meeting #10 // June 27, 2017

AECOM

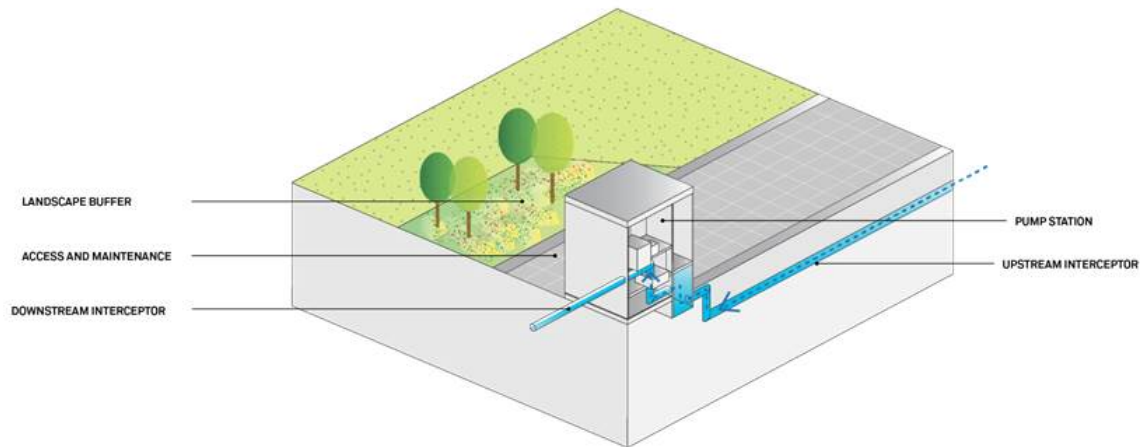
HYBRID BUILDING BLOCKS // STORMWATER STRATEGIES: EQUIPMENT

31

PROTECT

CULTIVATE

ENERGIZE



REBUILD BY DESIGN MEADOWLANDS

CAG Meeting #10 // June 27, 2017

AECOM

HYBRID BUILDING BLOCKS // EQUIPMENT ILLUSTRATIVE VIEW: TYPICAL STREET CONDITION

32



REBUILD BY DESIGN MEADOWLANDS

CAG Meeting #10 // June 27, 2017

AECOM

HYBRID BUILDING BLOCKS // EQUIPMENT

ILLUSTRATIVE VIEW: NEW PUMP STATION & GREEN INFRASTRUCTURE

33



REBUILD BY DESIGN MEADOWLANDS

CAG Meeting #10 // June 27, 2017

AECOM

BUILDING THE HYBRID COMMUNITY FOCUS CONCEPT

Focus benefits in the community cores with integrated access to the Hackensack River edge improvements.

34



REBUILD BY DESIGN MEADOWLANDS

CAG Meeting #10 // June 27, 2017

AECOM

BUILDING THE HYBRID COMMUNITY FOCUS CONCEPT

35

FEATURES INCLUDED

Alternative 1:

1. Hackensack Alignment
2. Surge Barrier @ Berry's Creek

Alternative 2:

1. All Main Street Green Features
2. All Main Street Grey Features
3. All Losen Slote
4. DePeyster Creek Open Space
5. Modified East Riser & Caesar Place Park
6. West Riser to Vincent Street



ALTERNATIVE 1

ALTERNATIVE 2



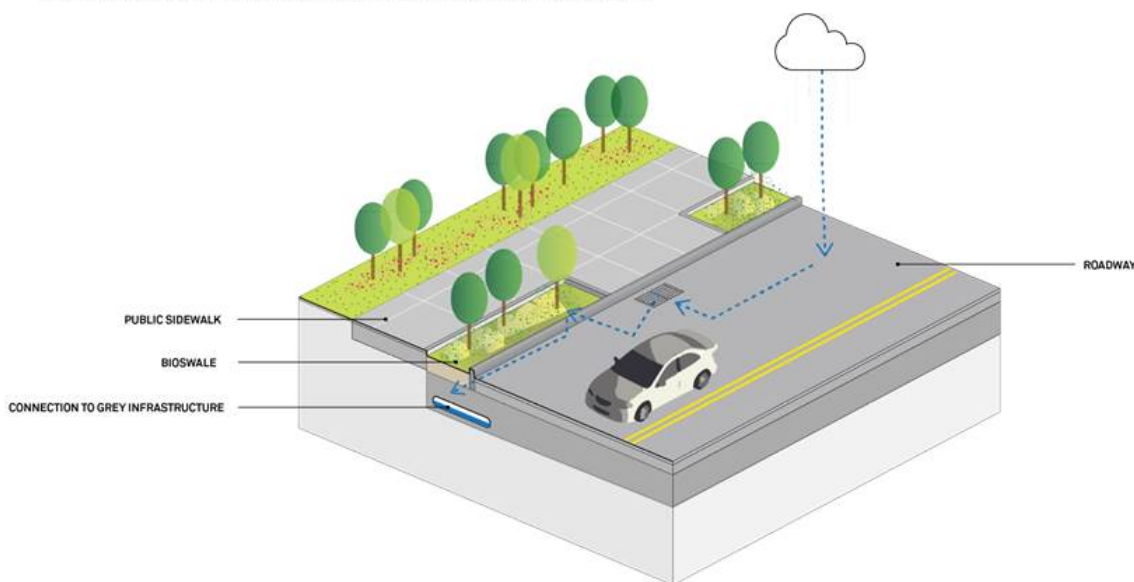
REBUILD BY DESIGN MEADOWLANDS

CAG Meeting #10 // June 27, 2017

AECOM

HYBRID BUILDING BLOCKS // STORMWATER STRATEGIES: GREEN INFRASTRUCTURE

36



PROTECT

CULTIVATE

ENERGIZE



REBUILD BY DESIGN MEADOWLANDS

CAG Meeting #10 // June 27, 2017

AECOM

HYBRID BUILDING BLOCKS // GREEN INFRASTRUCTURE

ILLUSTRATIVE VIEW: EXISTING SCHOOLS

37



CURRENT



REBUILD BY DESIGN MEADOWLANDS

CAG Meeting #10 // June 27, 2017

AECOM

HYBRID BUILDING BLOCKS // GREEN INFRASTRUCTURE

ILLUSTRATIVE VIEW: IMPLEMENTATION AT MUNICIPAL & SCHOOL BUILDINGS

38



PROPOSED



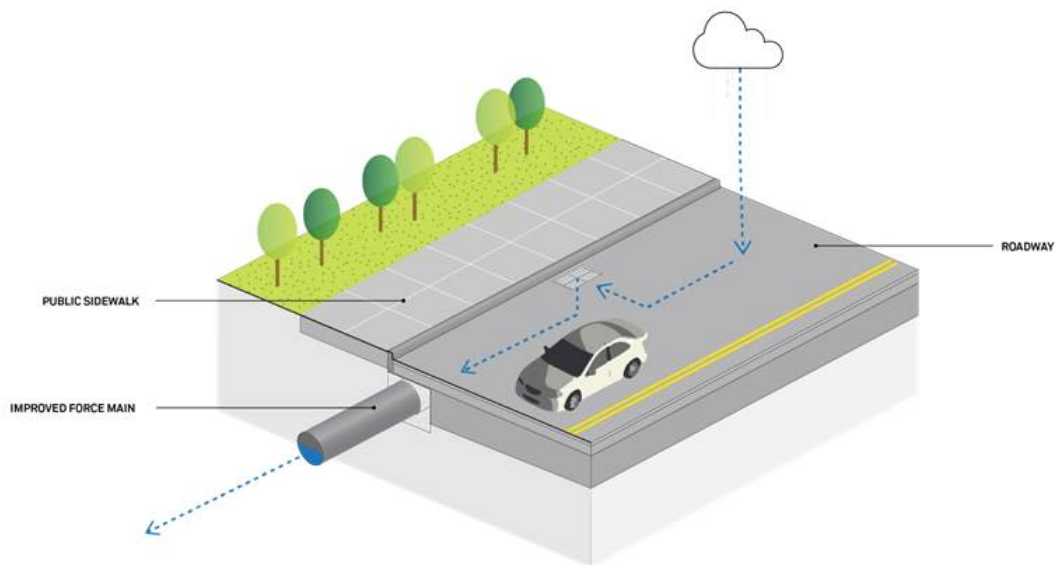
REBUILD BY DESIGN MEADOWLANDS

CAG Meeting #10 // June 27, 2017

AECOM

HYBRID BUILDING BLOCKS // STORMWATER STRATEGIES: INFRASTRUCTURE

39



PROTECT
CULTIVATE
ENERGIZE



REBUILD BY DESIGN MEADOWLANDS

CAG Meeting #10 // June 27, 2017

AECOM

HYBRID BUILDING BLOCKS // INFRASTRUCTURE ILLUSTRATIVE VIEW: EXISTING DEPEYSTER CREEK CONDITION

40



REBUILD BY DESIGN MEADOWLANDS

CAG Meeting #10 // June 27, 2017

AECOM

HYBRID BUILDING BLOCKS // INFRASTRUCTURE

ILLUSTRATIVE VIEW: PROPOSED IMPROVEMENTS AT DEPEYSTER CREEK

41



REBUILD BY DESIGN MEADOWLANDS

CAG Meeting #10 // June 27, 2017

AECOM

BUILDING THE HYBRID COMPLETE SYSTEM CONCEPT

42

Incorporating all features, creating a network of flood reduction and stormwater management with connected green infrastructure, habitat improvements, and public parks.



REBUILD BY DESIGN MEADOWLANDS

CAG Meeting #10 // June 27, 2017

AECOM

BUILDING THE HYBRID COMPLETE SYSTEM CONCEPT

43

FEATURES INCLUDED

Alternative 1:

1. Hackensack Alignment
2. Surge Barrier @ Berry's Creek

Alternative 2:

1. All Main Street Green Features
2. All Main Street Grey Features
3. Upper Losen Slote
4. DePeyster Creek Open Space
5. Fresh Water Wetland
6. Avanti Park
7. East Rise Extension
8. Caesar Place Park
9. Green Infrastructure Street Improvements
10. Complete West Riser



ALTERNATIVE 1

ALTERNATIVE 2



REBUILD BY DESIGN MEADOWLANDS

CAG Meeting #10 // June 27, 2017

AECOM

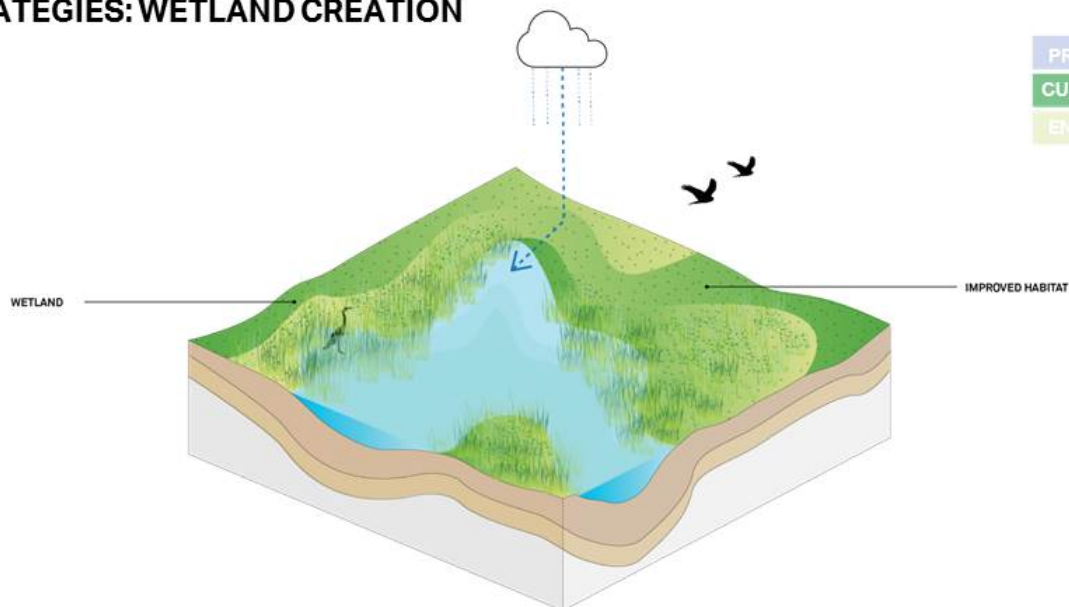
HYBRID BUILDING BLOCKS // STORMWATER STRATEGIES: WETLAND CREATION

44

PROTECT

CULTIVATE

ENERGIZE



REBUILD BY DESIGN MEADOWLANDS

CAG Meeting #10 // June 27, 2017

AECOM

HYBRID BUILDING BLOCKS // WETLANDS

ILLUSTRATIVE VIEW: EXISTING RIVER FRONT CONDITION

45



CURRENT



REBUILD BY DESIGN MEADOWLANDS

CAG Meeting #10 // June 27, 2017

AECOM

HYBRID BUILDING BLOCKS // WETLANDS

ILLUSTRATIVE VIEW: PROPOSED CREATION AT FLUVIAL PARK

46



PROPOSED



REBUILD BY DESIGN MEADOWLANDS

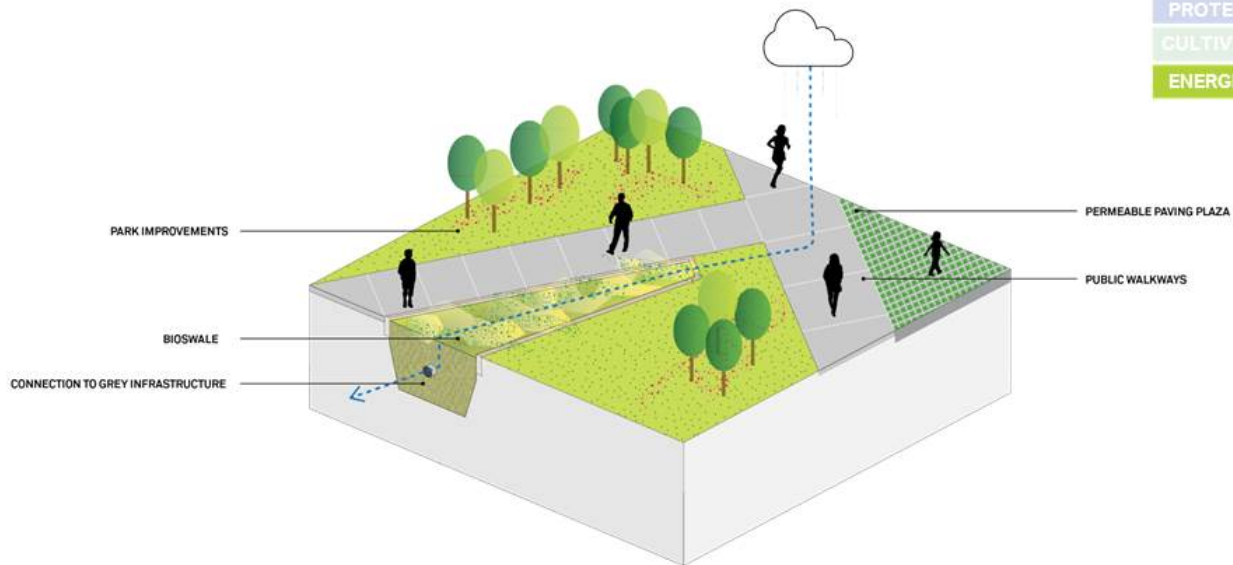
CAG Meeting #10 // June 27, 2017

AECOM

HYBRID BUILDING BLOCKS // STORMWATER STRATEGIES: PUBLIC REALM

47

PROTECT
CULTIVATE
ENERGIZE



REBUILD BY DESIGN MEADOWLANDS

CAG Meeting #10 // June 27, 2017

AECOM

HYBRID BUILDING BLOCKS // PUBLIC REALM ILLUSTRATIVE VIEW: UNDEVELOPED LOT

48



REBUILD BY DESIGN MEADOWLANDS

CAG Meeting #10 // June 27, 2017

AECOM

HYBRID BUILDING BLOCKS // PUBLIC REALM

ILLUSTRATIVE VIEW: PROPOSED PARK

49



REBUILD BY DESIGN MEADOWLANDS

CAG Meeting #10 // June 27, 2017

AECOM

NEXT STEPS

CHRISTOPHER BENOSKY, AECOM

NEXT STEPS

51

NJDEP / AECOM: UPCOMING ACTIVITIES

- Prepare Meeting Summary for CAG #10
- Continue developing and screening:
 - Hybrid Concepts, Alternatives, and Costs
- CAG #11 in September 2017
 - Alternative 1 – Structural Flood Reduction
 - Alternative 2 – Stormwater Drainage Improvements
 - Alternative 3 – Hybrid Alternative



REBUILD BY DESIGN MEADOWLANDS

CAG Meeting #10 // June 27, 2017

AECOM

NEXT STEPS

52

CAG: CALL TO ACTION

- Submit comments from CAG #10 meeting by **July 11, 2017**
- Share information from this meeting with friends and neighbors
- Continue to build interest in the Project
- Ensure the public knows about upcoming information (to be posted on Project website)



REBUILD BY DESIGN MEADOWLANDS

CAG Meeting #10 // June 27, 2017

AECOM

NEXT STEPS

53

Critical Information

Project Website

www.rbd-meadowlands.nj.gov

Project Email

rbd-meadowlands@dep.nj.gov

Question & Answer



REBUILD BY DESIGN MEADOWLANDS

CAG Meeting #10 // June 27, 2017

AECOM

THANK YOU

Attachment 2.

CAG Meeting Packet #10 (provided as handout at meeting)