



DECEMBER 3, 2015

# REBUILD BY DESIGN

■ RESIST ■ DELAY ■ STORE ■ DISCHARGE ■

## HUDSON RIVER

Hoboken

Weehawken

Jersey City

New Jersey

### CITIZEN ADVISORY GROUP – CONCEPT SCREENING

# **AGENDA**

1. Introductions
2. Housekeeping
3. Project Status/Recap of Previous Meeting
4. Recap of Screening Criteria
5. Breakout Sessions
6. Recap - Comments, Q&A and Next Steps

# HOUSEKEEPING

## ■ CAG Communication Frameworks

	<u>Planned</u>	<u>Actual</u>
– 1 DAY after CAG meeting:		
• All material provided at meeting distributed	Nov 24	Nov 24
– 5 DAYS after CAG meeting:		
• Distribution of meeting summary	Nov 30	Nov 30
– 10 DAYS after CAG meeting:		
• CAG comments on meeting summary due	Dec 7	Comment Period Ongoing
– 2 Days prior to CAG meeting:		
• Finalize meeting summary	Dec 1	Comment Period Ongoing
• Provide agenda	Dec 1	Dec 1
• Other information regarding meeting content	Dec 1	None

# PROJECT STATUS

we are here



**NOI**

## NEPA PROCESS

**Technical Environmental Studies**

**ROD**

## FEASIBILITY ASSESSMENT

## PUBLIC INVOLVEMENT

**NOI** - Notice of Intent

**ROD** - Record of Decision

**EIS** - Environmental Impact Statement

# SCREENING CRITERIA RECAP

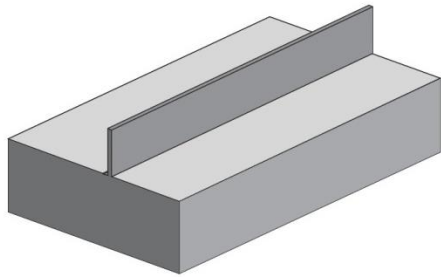
- Criteria are factors that help us evaluate the concepts in terms of:
  - Meeting Purpose and Need
  - Potential Benefits to the Community
  - Potential Impacts to the Natural and Built Environment
- Metrics are how we measure the criteria.

<b><u>CRITERIA</u></b>	Flood Risk Reduction	Built Environment	Environmental Impacts	Construction
<b><u>METRIC</u></b>	Percentage reduction in flooding	Potential for new amenities created	Number of hazardous waste sites	Degree of difficulty to construct



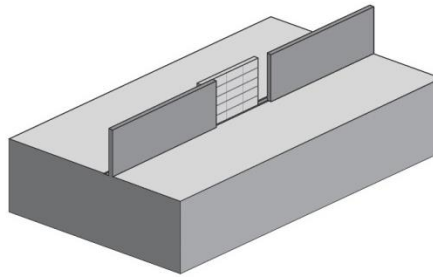
# QUALITATIVE METRICS

Criteria are evaluated on a 'Good, Fair, Poor' standard.



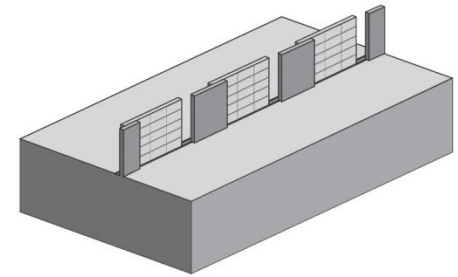
## GOOD

Maximum permanent structures with fewer deployable structures. Lower ongoing operation and maintenance costs. Reduced potential for human error.



## FAIR

More deployable structures. Moderate ongoing operation and maintenance costs. Moderate potential for human error.

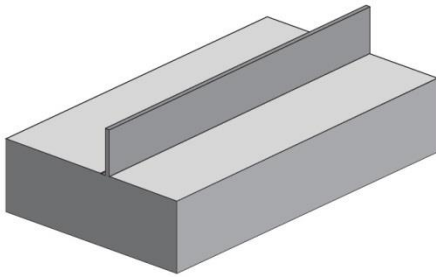


## POOR

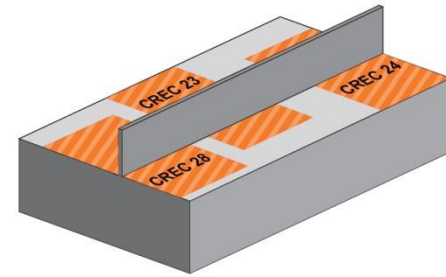
Many deployable structures. High ongoing operation and maintenance costs. Higher potential for human error.

# QUANTITATIVE METRICS

**Criteria are evaluated numerically.**



**(0) Sites**



**(3) Sites**

## **HAZARDOUS WASTE**

Number of potentially contaminated sites based on desktop data collection.

# BREAKOUT SESSION

DECEMBER 3, 2015



# RECAP – COMMENTS, Q&A AND NEXT STEPS

- December 10, 2015: Concept Screening (Public Meeting)

Wallace School Gym  
1100 Willow Avenue  
6:00 - 9:00 PM

- Public Drop-In Sessions:

- December 15, 2015  
St. Lawrence Church Community Room  
22 Hackensack Avenue, Weehawken  
6:30 - 8:30 PM

- December 17, 2015  
Hoboken Housing Authority Senior Building  
221 Jackson Street, Hoboken  
6:30 - 8:30 PM