

Overburdened Communities (OBC)

Under the Environmental Justice Rule

Data from the 5 Year American
Community Survey (2019 to 2023)

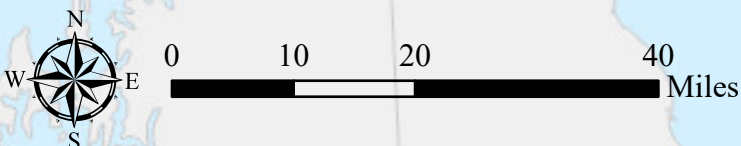
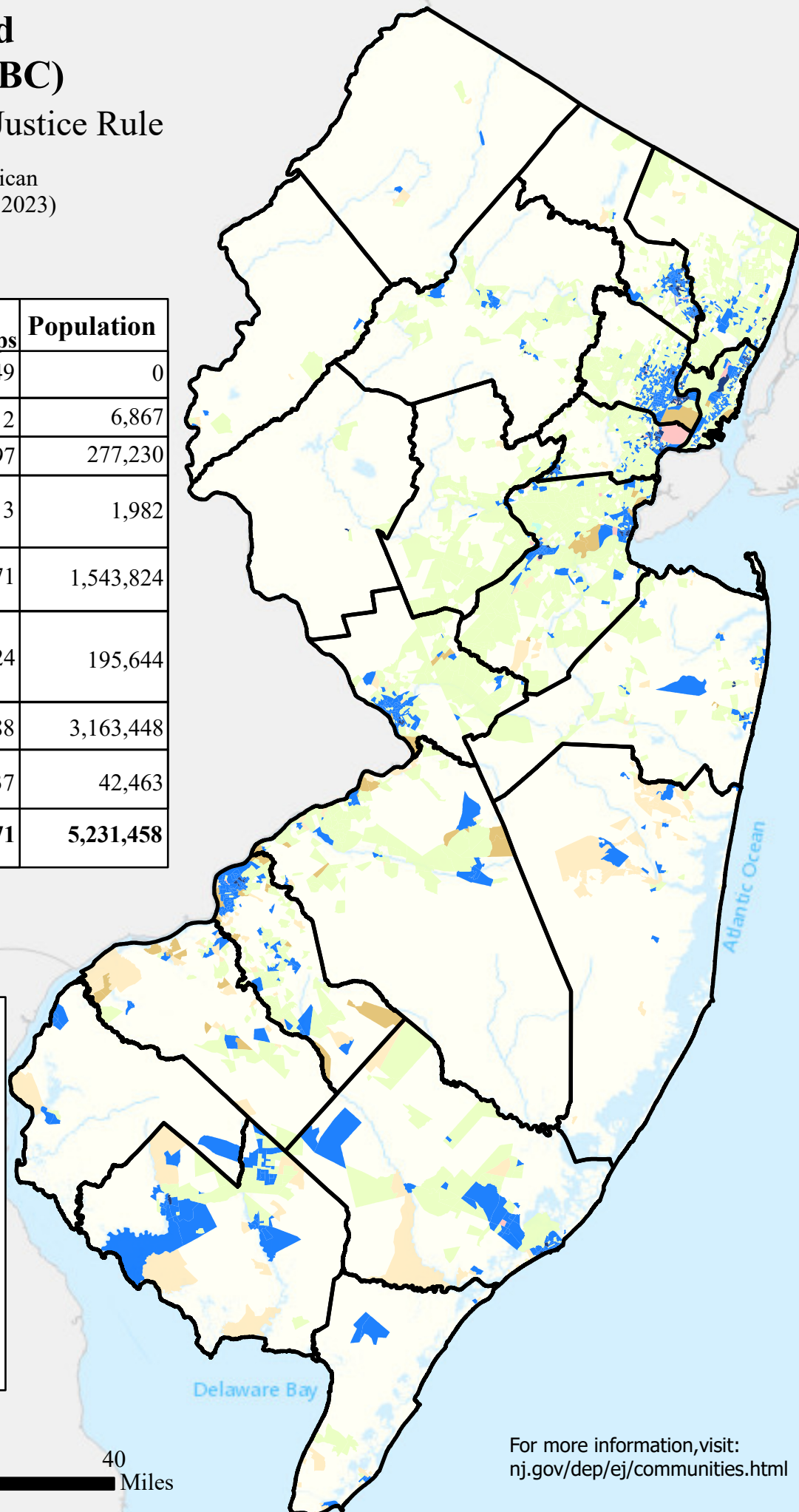
Overburdened Community Criteria	Number of Block Groups	Population
Adjacent	49	0
Limited English	2	6,867
Low Income	197	277,230
Low Income & Limited English	3	1,982
Low Income & Minority	1,071	1,543,824
Low Income, Minority, & Limited English	124	195,644
Minority	2,188	3,163,448
Minority & Limited English	37	42,463
Total	3,671	5,231,458

 County
Boundaries

The State has updated mapping of New Jersey's OBCs, as required by the Act (see the Overburdened Communities tab above). Specifically, OBCs are block groups with:

- (1) At least 35 percent low-income households; or
- (2) At least 40 percent of the residents identify as minority or as members of a State recognized tribal community; or
- (3) At least 40 percent of the households have limited English proficiency

Census block groups with zero population and located immediately adjacent to an OBC are labeled as "adjacent." Existing or proposed facilities located in adjacent block groups may be required to conduct further analysis in accordance with the Environmental Justice Rules



For more information, visit:
nj.gov/dep/ej/communities.html