



Using EPA's Community Change Grants (Track I) for eMobility



What is eMobility?

Equitable, shared transportation using electric vehicles

These mobility options should:

- Reduce greenhouse gas and other air pollution in overburdened communities
- Provide additional modes of transportation for residents who may not own a vehicle



eMobility Models

This is not a conclusive list of all models. Projects should include meaningful engagement with the community and be tailored to meet the needs of residents they serve.



Microtransit

Demand-responsive service that typically uses ad hoc pickup and drop-off points, within a few minutes' walk of multiple customers, and generally within limited service zones.



Carsharing

Provides members with access to an automobile for short-term use. Carshare provides most of the benefits of a personal automobile without the costs of owning a private vehicle.



Shuttle Service

Fixed route service that typically makes limited stops to help fill gaps in mass transit. Shuttles may be open to the public or available only to specific riders - workforce transportation for example.



eMobility Hubs

A centralized location that provides residents with connections to multiple transportation options to accommodate first- and last-mile trips from mass transit.

eMobility Example in Action - Trenton, NJ



Project Leader: Isles, Inc.

A nonprofit community development and environmental organization based in Trenton.

The Challenge

Through their day-to-day work, Isles discovered that transportation is a major barrier for residents to find and keep good paying jobs.

After speaking with other organizations, hosting listening sessions, and asking residents about their transportation needs, they learned that the lack of affordable and reliable transportation was prevalent throughout the city, limiting residents' quality of life.

The Solution: GOTrenton!

A Community-Led eMobility Pilot



On-Demand Shuttle Top Destinations

- Transit Center
- Soup Kitchen
- Grocery Stores
- Health Center
- Senior Center
- Community College
- Multi-Family Housing
- Community Center
- Public Library
- Parenting Center

Main Project Components

- On-demand shuttles (all-electric)
- EV charging stations
- Workforce van (all-electric)

Workforce Development

Local residents were hired and trained as drivers for the program.

The electric workforce van will transport residents from Trenton to common workplace sites that currently don't have direct transportation access.

Learn More at www.gotrenton.org

Community Change Grants


Federal Grant through EPA with \$2B available for community-driven pollution and climate resiliency solutions for disadvantaged communities

- **Track I: Community-Driven Investments for Change**
 - Funding Available: \$1.96 billion for approximately 150 awards
 - Per Award Amount: \$10M-20M each
- **Track II: Meaningful Engagement for Equitable Governance**
 - Funding Available: \$40M for approximately 20 awards
 - Per Award Amount: \$1M-3M each
- **Additional \$200M available for Technical Assistance**





Community Change Grants: Rolling Applications & Awards Due by November 21, 2024

- Submit anytime between now and 11/21/24
 - Encouraged to submit ASAP
 - Two-Phase Evaluation Process (Track I only): applications that score well are invited to participate in an oral presentation
 - Application process is collaborative with EPA: Non-selected applicants allowed to resubmit before the deadline after a debriefing from EPA
 - Expedited selection process: fast-tracked approach to get high quality applications awarded quickly
- 

Community Change Grants Eligibility

Projects

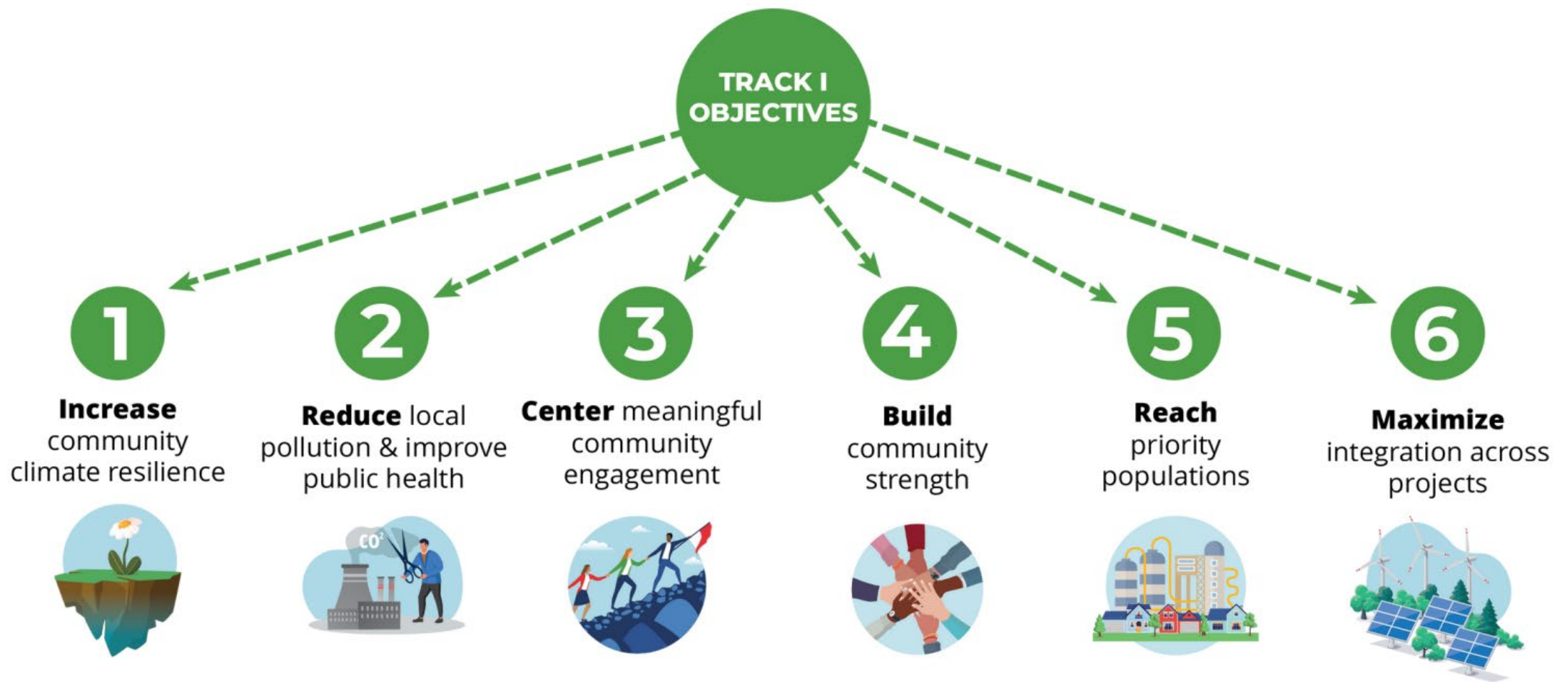
Must be a *community-identified* project to benefit a Disadvantaged Community: <https://www.epa.gov/environmentaljustice/inflation-reduction-act-disadvantaged-communities-map>

Applicants

All applications must include a Lead Applicant & Statutory Partner

- *Lead Applicant* must be a Community-Based Organization (CBO)
- *Statutory Partner* can be another CBO, Local Government, Institute of Higher Education, or Federally Recognized Tribe
- Others can be involved as *collaborating entities* (state governments, additional CBOs and local gov, etc.)





Community Change Grants: Track I

Community-Driven Investments for Change

1. Climate Action Strategy (must address at least 1)
2. Pollution Reduction Strategy (must address at least 1)
3. Community Engagement & Collaborative Governance Plan
4. Community Strength Plan
5. Readiness approach
6. Compliance Plan

There are 6 requirements that must be met for Track I Applications.

This is a high-level overview. View the Notice of Funding Opportunity (NOFO) for complete details:

<https://www.epa.gov/system/files/documents/2024-02/community-change-grants-modified-nofo-2.12.24.pdf>

Requirements

Track I: Community-Driven Investments for Change



1. Climate Action Strategy (must address at least 1)

 Green Infrastructure & Nature-Based Solutions

 Mobility & Transportation Options

 Energy-Efficient, Healthy and Resilient Housing & Buildings

 Microgrid Installation Community Resilience Hubs

 Brownfield Redevelopment Waste Reduction & Management

 Workforce Development

Examples of projects under the **Mobility & Transportation Options** Strategy from the NOFO include:

- Purchase, lease, or contract for the use of zero-emission vehicles for community car sharing, vanpooling, ride-sharing, and related mobility options.
- Purchase, construct, and / or install infrastructure, equipment, or facilities to create and / or support low or zero-emission transportation options.

Requirements

Track I: Community-Driven Investments for Change



1. Climate Action Strategy (must address at least 1)
2. **Pollution Reduction Strategy (must address at least 1)**



Indoor Air Quality & Community Health



Outdoor Air Quality & Community Health



Clean Water Infrastructure



Hazardous Waste Management

Transportation emissions are the largest source of greenhouse gas pollution in the State. They also serve as a significant contributor for other air pollutants, like NOx and particulate matter, which have harmful environmental and health effects. eMobility addresses these concerns because electric vehicles do not produce any tailpipe emissions.

Requirements

Track I: Community-Driven Investments for Change



1. Climate Action Strategy (must address at least 1)
2. Pollution Reduction Strategy (must address at least 1)
- 3. Community Engagement & Collaborative Governance Plan**

Community Engagement:

- Past community outreach and engagement conducted
- Methods for implementation
- Measures to minimize and mitigate barriers
- Government involvement

Collaborative Governance Structure:

- Roles and responsibilities of the Lead Applicant, Collaborating Entities, and community residents and/or community-selected representatives

Requirements

Track I: Community-Driven Investments for Change



1. Climate Action Strategy (must address at least 1)
2. Pollution Reduction Strategy (must address at least 1)
3. Community Engagement & Collaborative Governance Plan
- 4. Community Strength Plan**

Projects should:

- Maximize the economic benefits for existing residents
- Avoid unintended consequences for existing residents, including displacement

Requirements

Track I: Community-Driven Investments for Change



1. Climate Action Strategy (must address at least 1)
2. Pollution Reduction Strategy (must address at least 1)
3. Community Engagement & Collaborative Governance Plan
4. Community Strength Plan

5. Readiness approach

Applicants must demonstrate they can:

- Obtain government approval if needed
- Comply with any Federal requirements for construction
- Align their project with existing plans and land use
- Acquire site control
- Provide operations and maintenance of the investment

Requirements

Track I: Community-Driven Investments for Change



1. Climate Action Strategy (must address at least 1)
2. Pollution Reduction Strategy (must address at least 1)
3. Community Engagement & Collaborative Governance Plan
4. Community Strength Plan
5. Readiness approach

6. Compliance Plan

Ensure compliance with the grant's terms and conditions, including financial management, internal controls, etc.

Requirements

Track I: Community-Driven Investments for Change



Resources & Links



EPA's Community Change Grants website:
<https://www.epa.gov/inflation-reduction-act/inflation-reduction-act-community-change-grants-program>

Information Webinar:
<https://www.youtube.com/watch?v=dFulXond3A4>

Notice of Funding Opportunity:
<https://www.epa.gov/system/files/documents/2024-02/community-change-grants-modified-nofo-2.12.24.pdf>

Technical Assistance Website:
<https://communitychangeta.org/>