

A decorative graphic on the left side of the slide, consisting of a network of light blue lines and circles, resembling a circuit board or a stylized tree structure.

CHARGING INFRASTRUCTURE MAPPING AND MODELING

2022 ELECTRIC VEHICLE DC FAST CHARGING COMMUNITY SOLICITATION

NEW JERSEY DEPARTMENT OF ENVIRONMENTAL PROTECTION (DEP)

BUREAU OF MOBILE SOURCES

BACKGROUND & DEVELOPMENT

Geographic and Demographic Considerations:

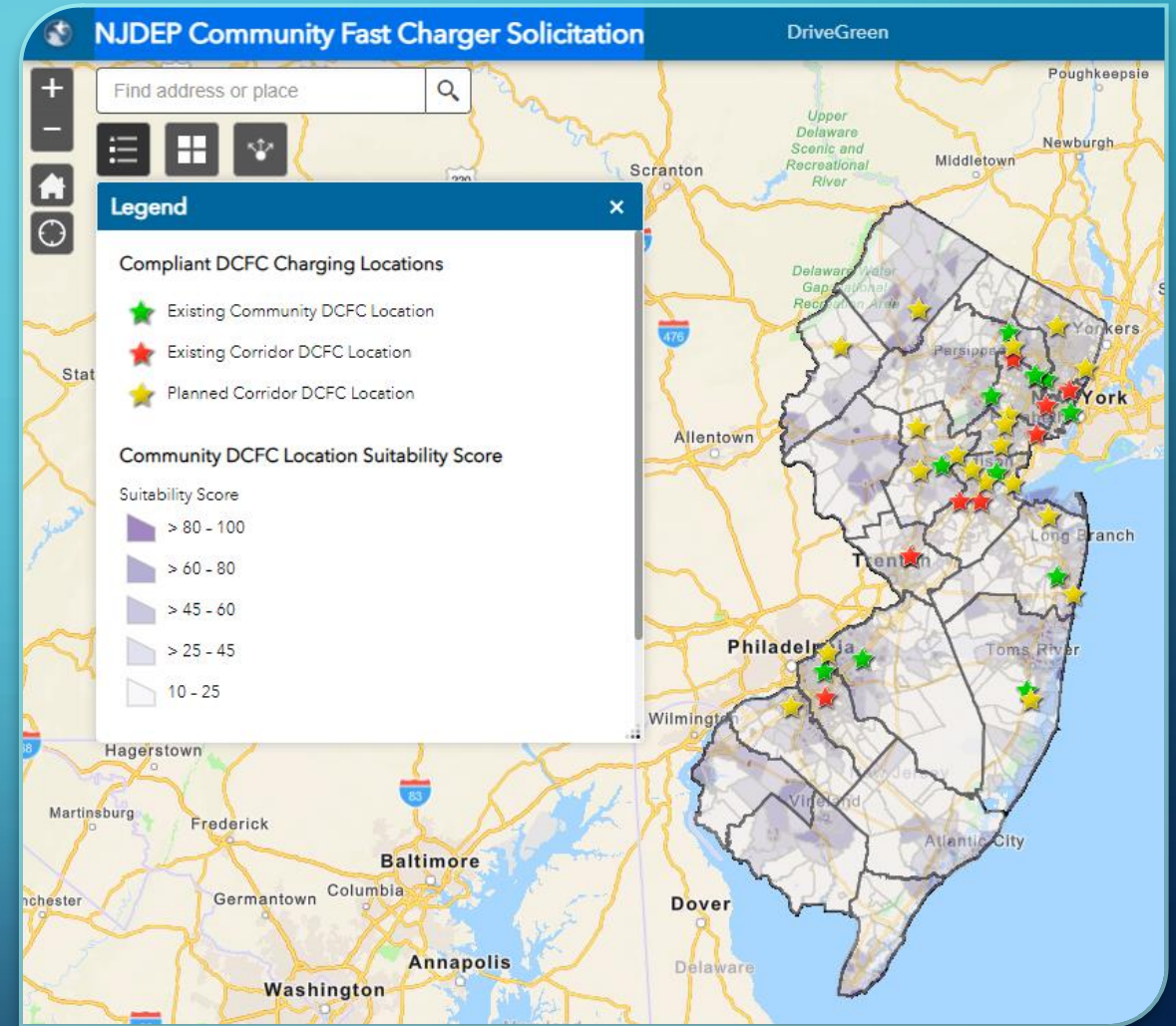
- MJ Bradley & Associates developed a tool (ILIT) to evaluate what locations may be suited for electric vehicle fast charging infrastructure.
- DEP unitized ILIT to receive a “suitably score” for each census tract within all NJ counties. Each tract was given a score out of 100 based on their population density and commercial activity relative to each other tract in the county.
- Locations of planned and existing compliant (50kw or greater) DCFC stations are mapped.



NJDEP COMMUNITY SOLICITATION GIS MAP

- **Map Overview**

- This interactable heatmap displays the suitability score for each census tract and displays the locations of the DCFC infrastructure.
- Each tract is assigned a color corresponding with its suitability score, the darkest tracts having the highest scores.
- Census Tracts and DCFC Infrastructure are automatically overlaid on the map. Each of these tracts and location points can be clicked on, which will pull up more information



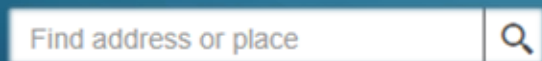
FEATURES

- **Layer List** - This tool allows specific layers to be selectively displayed. The tract data, charging locations, county boundaries, and municipality boundaries may be switched on or off.

Tool Icon:



- **Search Tool** – This search function can input an address or place, pinpoint the location, and zoom in.



- **Base Map Gallery** – This tool will display the section of base maps of which there are 6 map options. There are 2 Base Maps of note:
 - *Navigation* – This Base Map is selected by default and best displays the Census Tract colors to be the most visible by contrast.
 - *OpenStreetMap* – This Base Map can be used to easily locate businesses, public spaces, and other locations details by use of zoom function.

Tool Icon:



EXCEL DATA TABLE

- This table displays Suitability Score data generated with the ILIT Model and includes the same tract data as the DEP map.
- Tract data is grouped alphabetically by county. Utilizing the dropdown menus for each column, user can sort and filter data.
- These table tools can be used to:
 - Find the tract score of a specific municipality
 - Isolate the highest suitability scores through the state
 - Organize the data in whatever way is most suited to the user

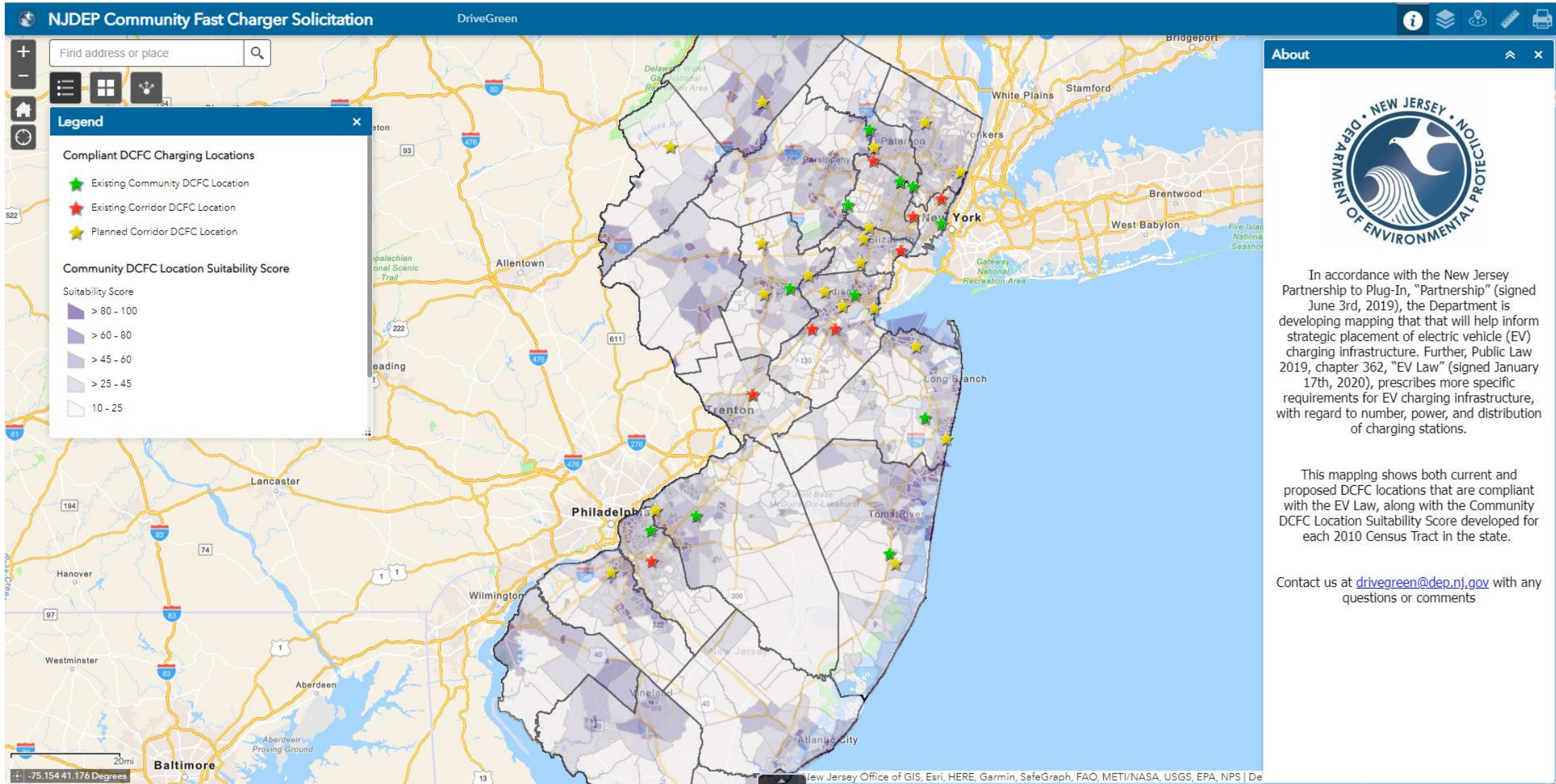
NJDEP Bureau of Mobile Sources 2022 Community Solicitation Data Table

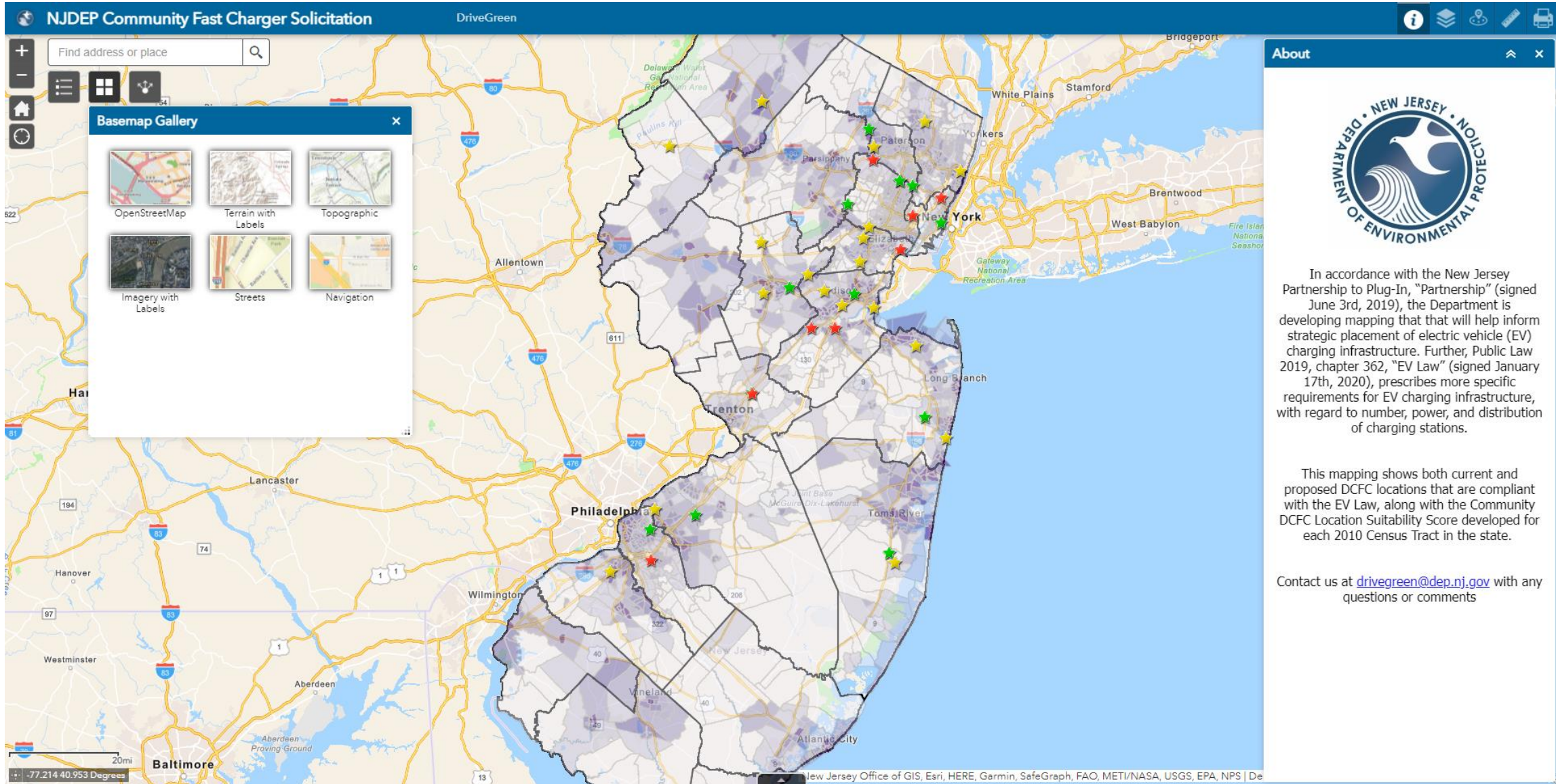
Main Phone #: (609) 292-7953 / E-mail Address: drivegreen@dep.nj.gov

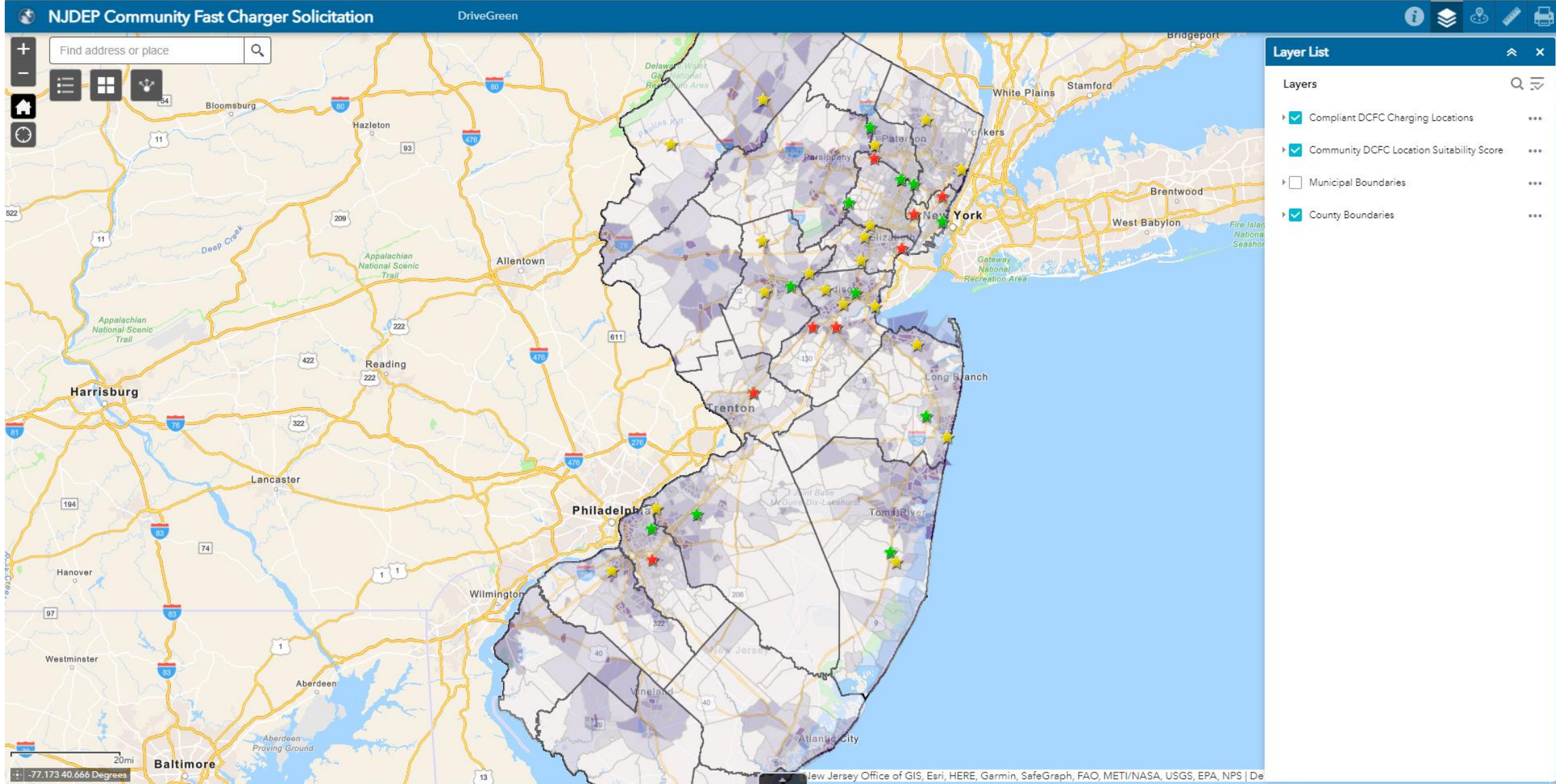
County Tier ▼	County Name ▼	Tract ID Number ▼	Municipality ▼	Final Score ▼
Tier 1	Atlantic	Tract 5	Atlantic City	100
Tier 1	Atlantic	Tract 11	Atlantic City	100
Tier 1	Atlantic	Tract 15	Atlantic City	100
Tier 1	Atlantic	Tract 2	Atlantic City	95
Tier 1	Atlantic	Tract 3	Atlantic City	95
Tier 1	Atlantic	Tract 4	Atlantic City	95
Tier 1	Atlantic	Tract 12	Atlantic City	95
Tier 1	Atlantic	Tract 19	Atlantic City	95
Tier 1	Atlantic	Tract 23	Atlantic City	95
Tier 1	Atlantic	Tract 25	Atlantic City	95
Tier 1	Atlantic	Tract 24	Atlantic City	90
Tier 1	Atlantic	Tract 14	Atlantic City	85
Tier 1	Atlantic	Tract 119	Pleasantville	85
Tier 1	Atlantic	Tract 1	Atlantic City	80
Tier 1	Atlantic	Tract 122	Pleasantville	80
Tier 1	Atlantic	Tract 128.01	Somers Point	80
Tier 1	Atlantic	Tract 101.02	Brigantine	75
Tier 1	Atlantic	Tract 131.01	Margate City	75
Tier 1	Atlantic	Tract 131.02	Margate City	75
Tier 1	Atlantic	Tract 101.04	Brigantine	70
Tier 1	Atlantic	Tract 101.05	Brigantine	70
Tier 1	Atlantic	Tract 121	Pleasantville	70
Tier 1	Atlantic	Tract 127.01	Somers Point	70
Tier 1	Atlantic	Tract 130	Margate City	70
Tier 1	Atlantic	Tract 132.01	Ventnor City	65

LIVE DEMONSTRATION











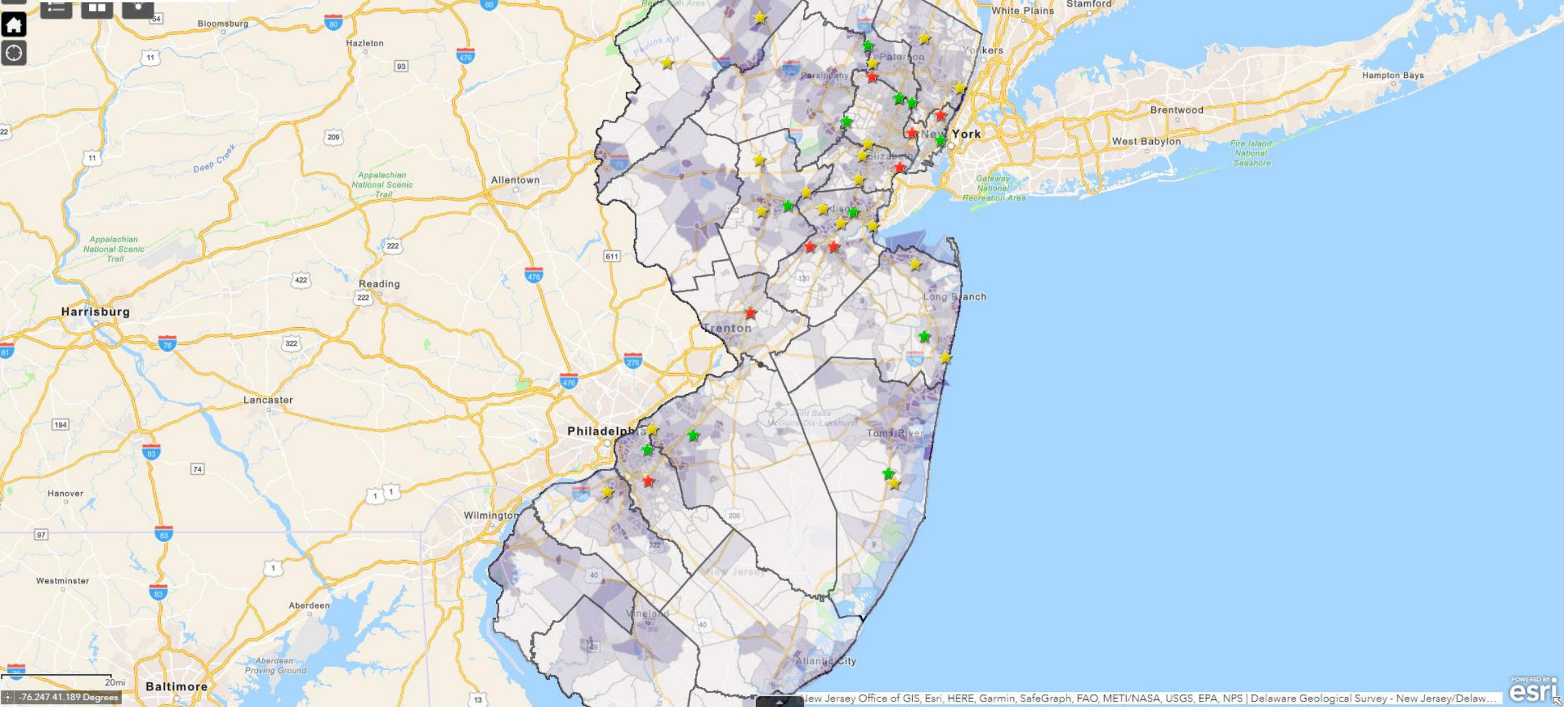
NJDEP Community Fast Charger Solicitation

DriveGreen



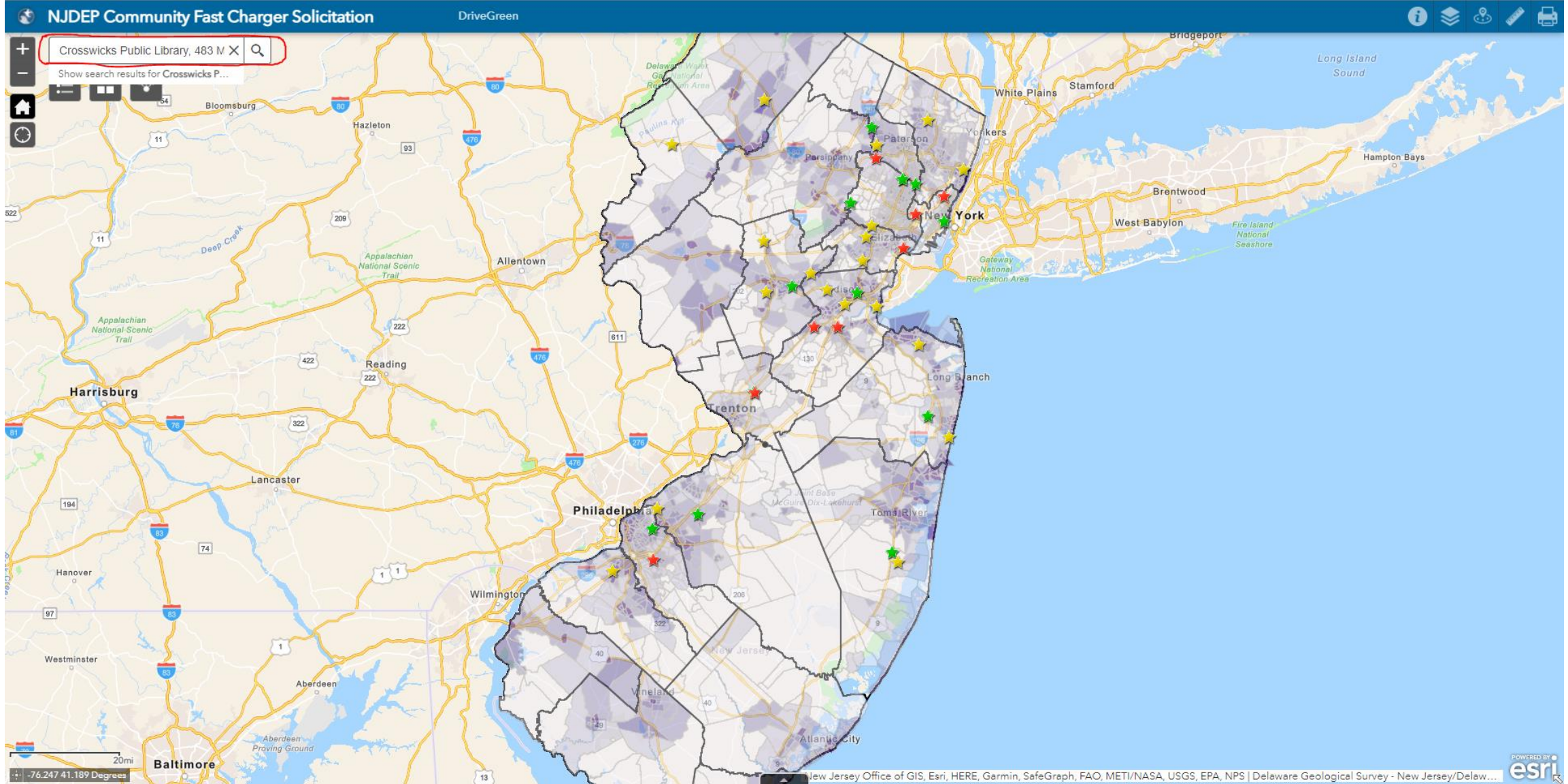
Crosswicks Public Library, 483 M X

Show search results for Crosswicks P...



New Jersey Office of GIS, Esri, HERE, Garmin, SafeGraph, FAO, METI/NASA, USGS, EPA, NPS | Delaware Geological Survey - New Jersey/Delaw...





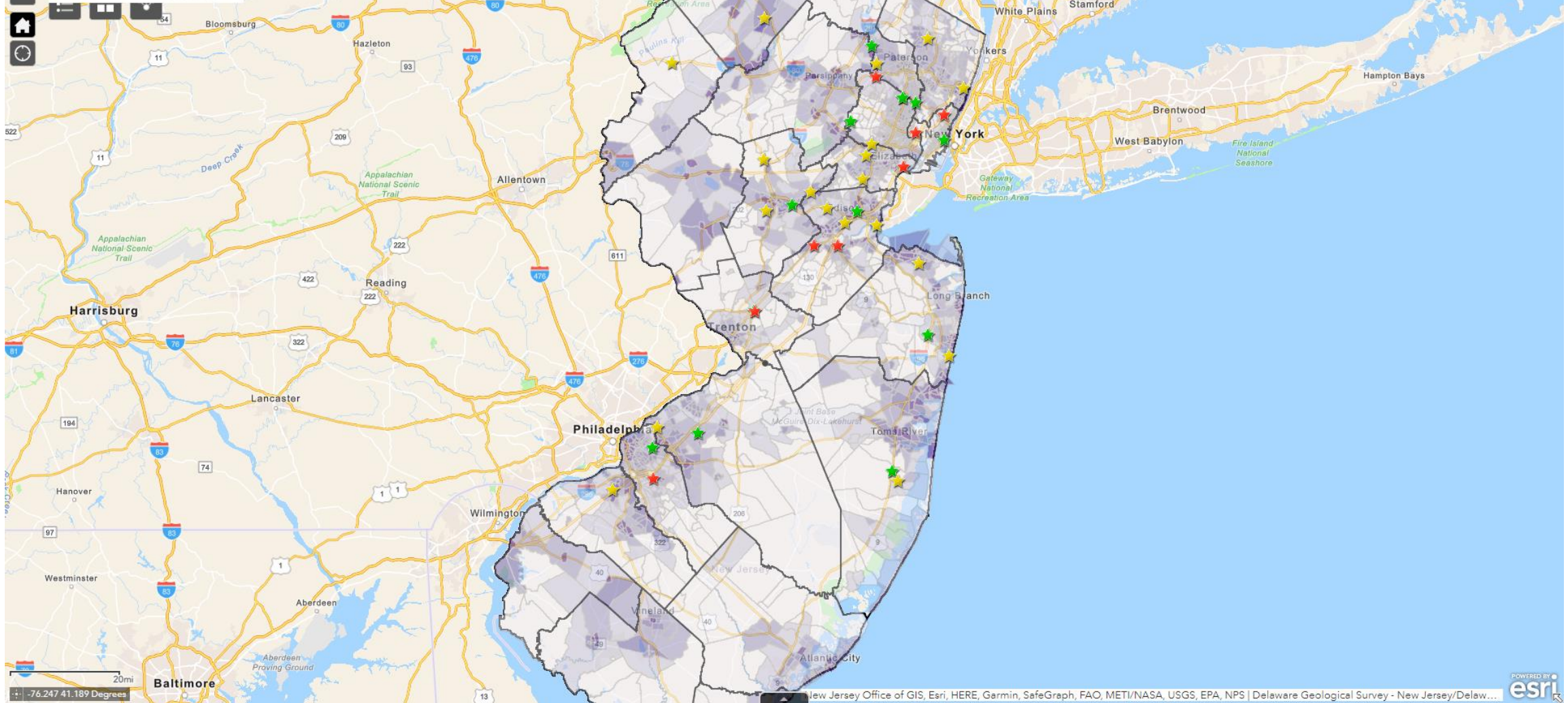
NJDEP Community Fast Charger Solicitation

DriveGreen



Crosswicks Public Library, 483 M X

Show search results for Crosswicks P...



-76.247 41.189 Degrees

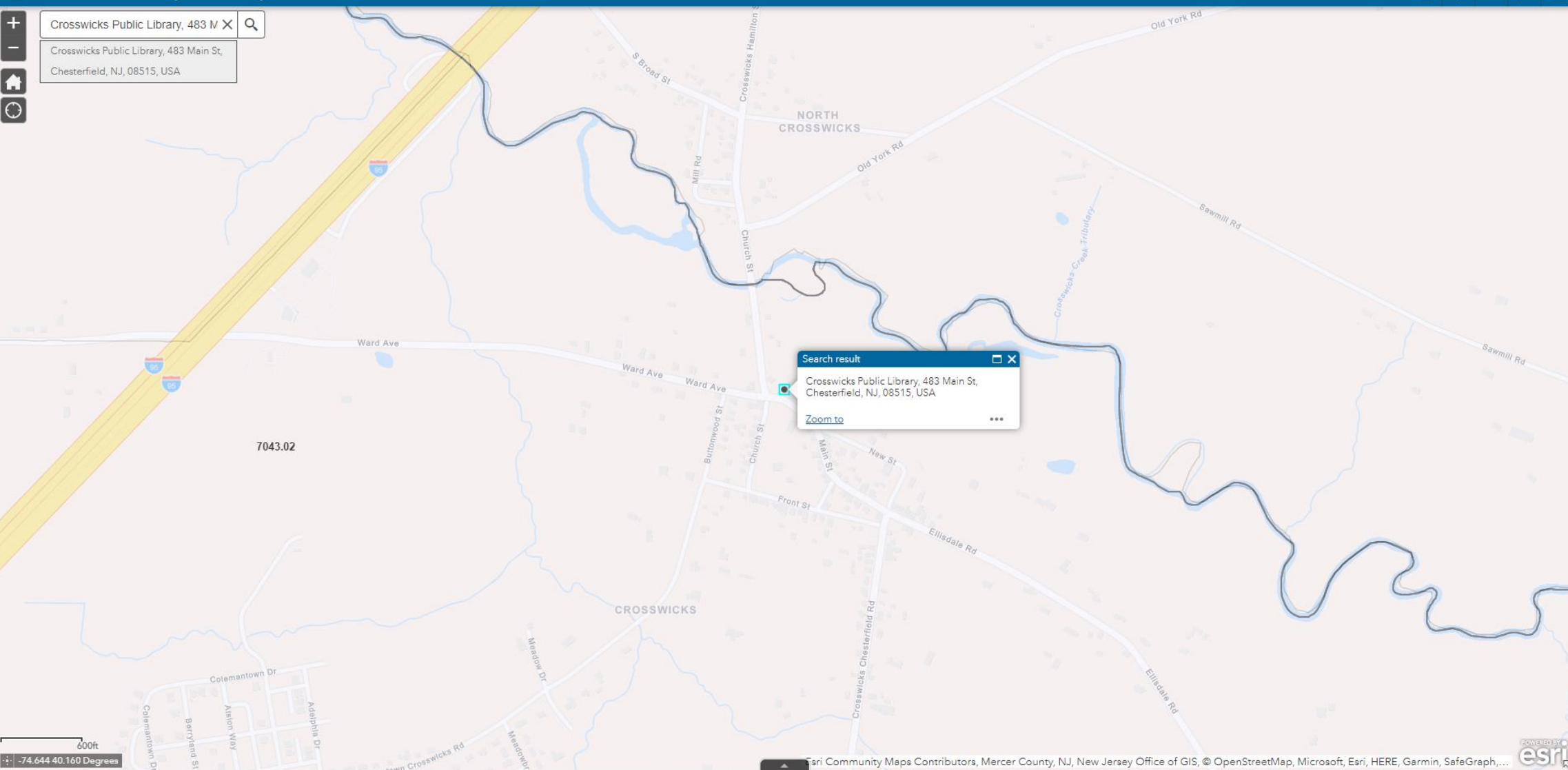
New Jersey Office of GIS, Esri, HERE, Garmin, SafeGraph, FAO, METI/NASA, USGS, EPA, NPS | Delaware Geological Survey - New Jersey/Delaw...





Crosswicks Public Library, 483 M X

Crosswicks Public Library, 483 Main St,
Chesterfield, NJ, 08515, USA



+

-

Search: Crosswicks Public Library, 483 M X

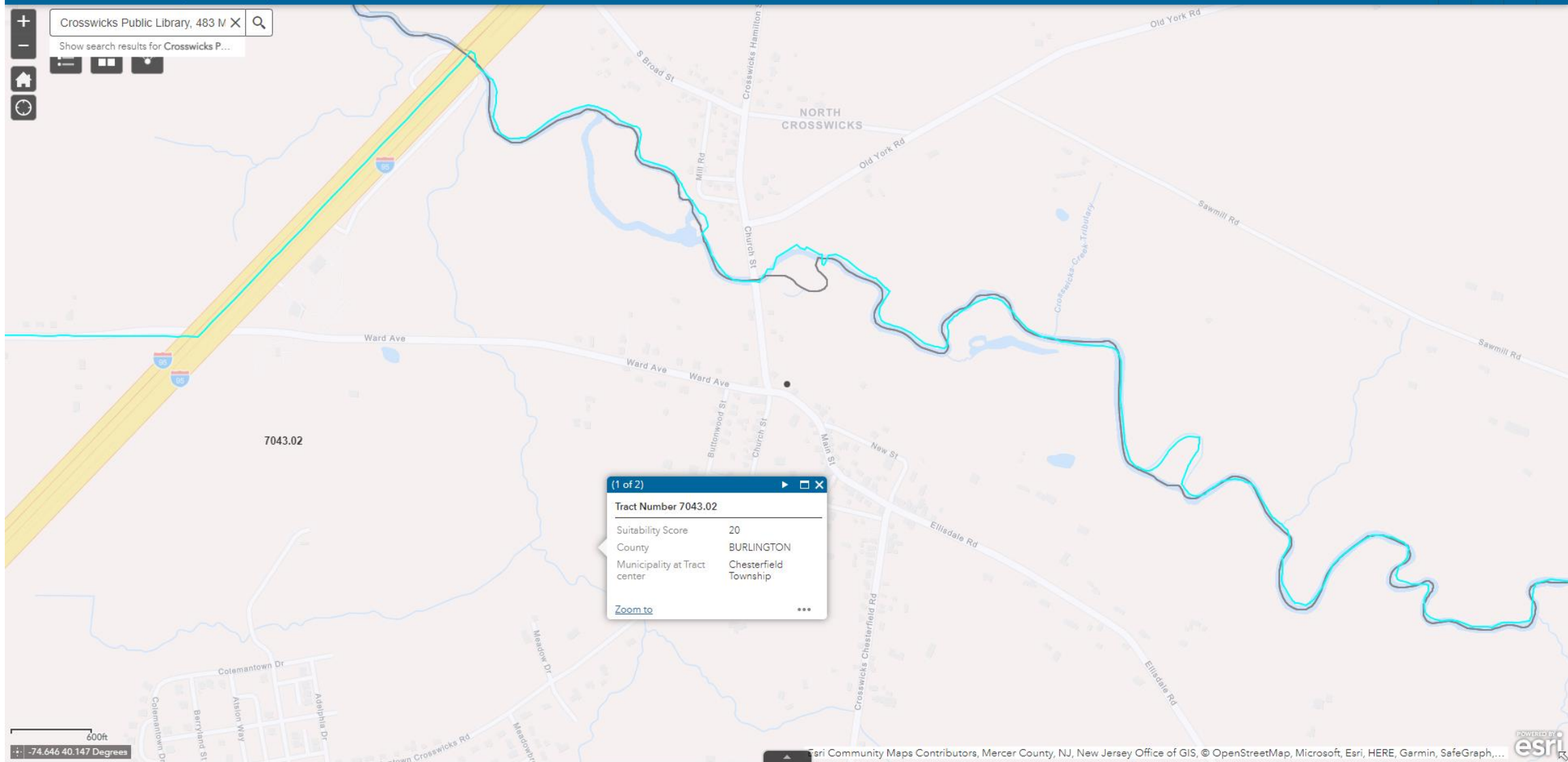
Show search results for Crosswicks P...

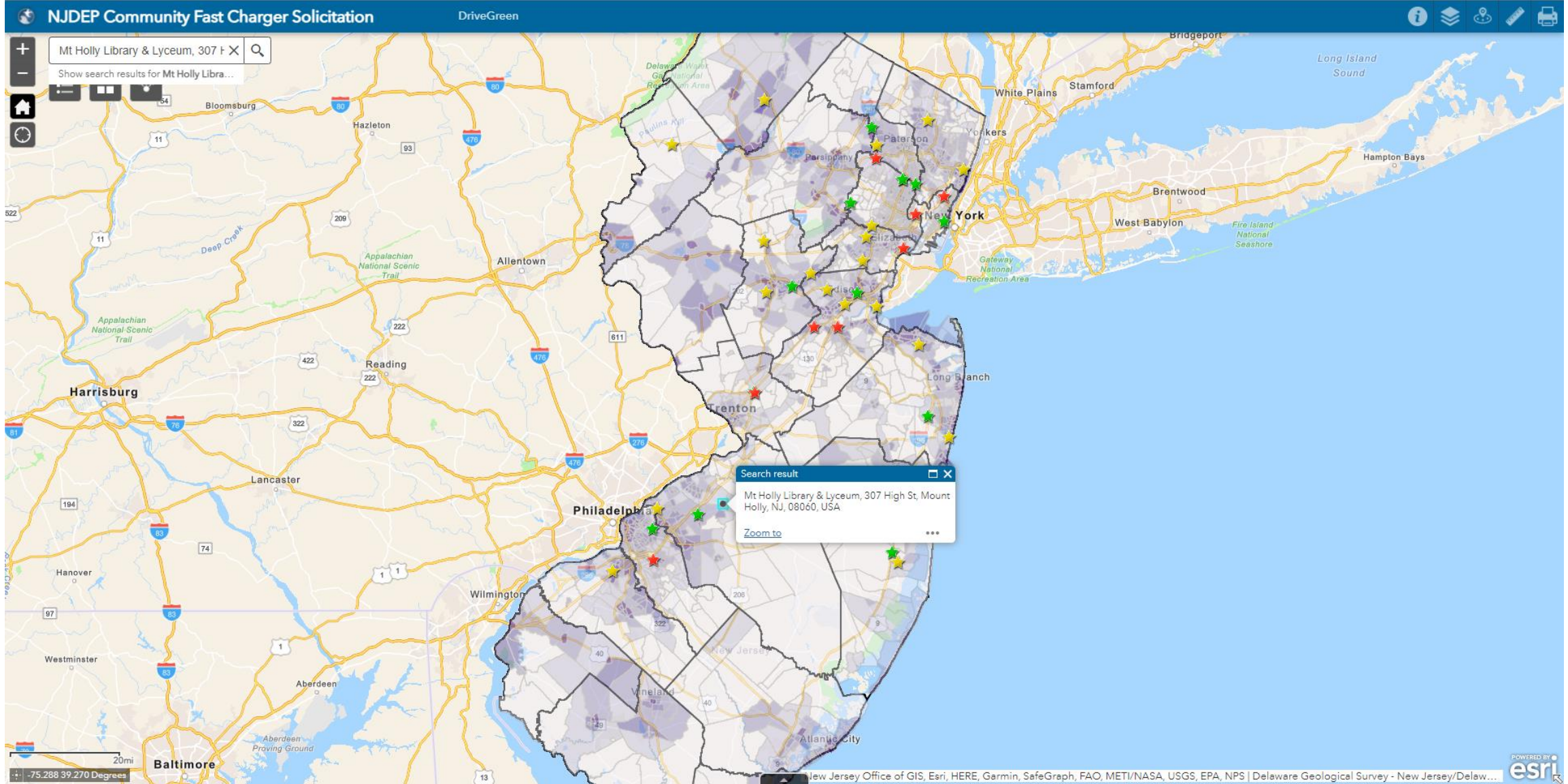
Home

Layers

Full Screen

Print





NJDEP Community Fast Charger Solicitation

DriveGreen



+

-

Mt Holly Library & Lyceum, 307 High St, Mount Holly, NJ, 08060, USA

Q

Show search results for Mt Holly Libra...

Home

Layers

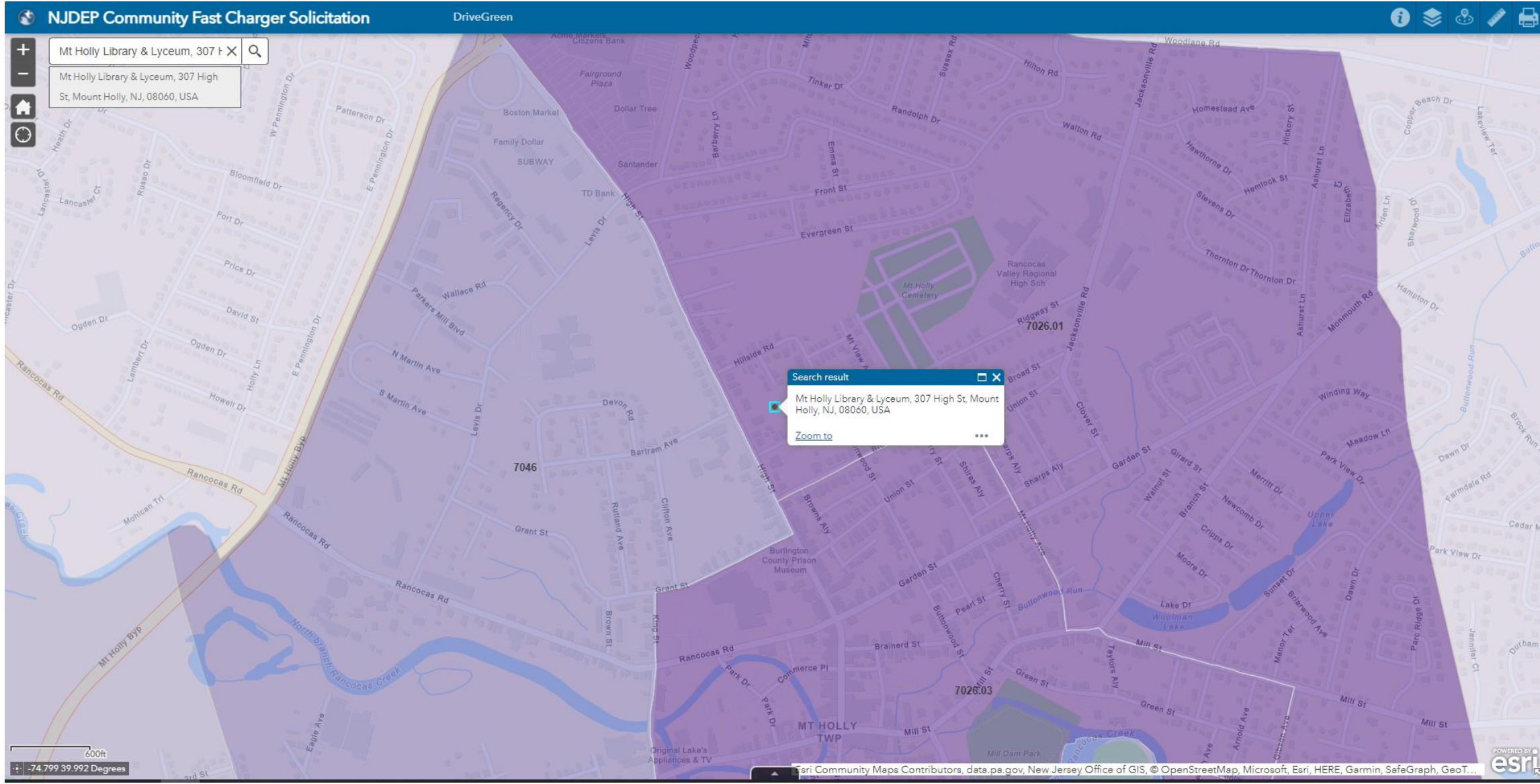
Full Screen

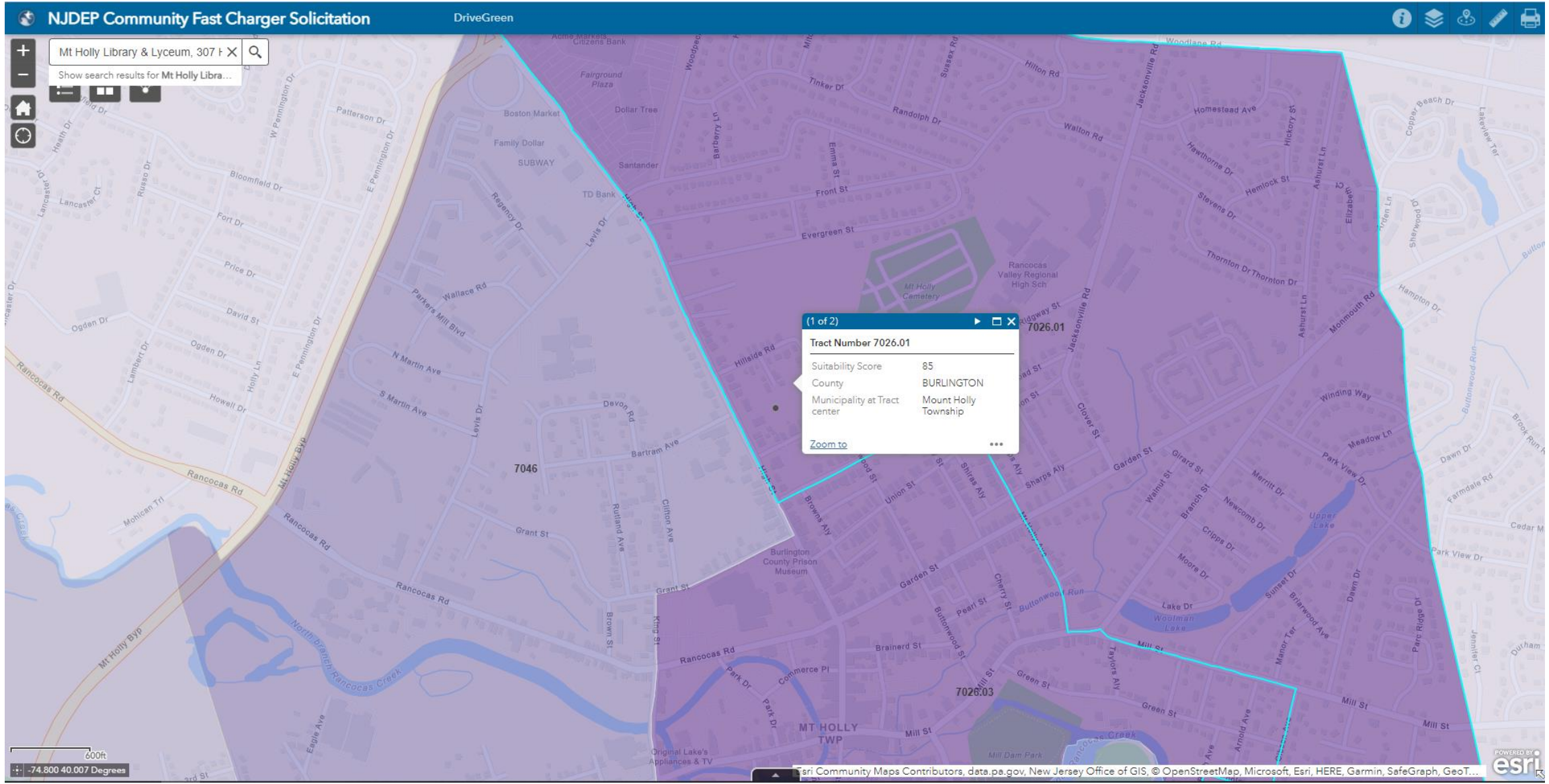
Print

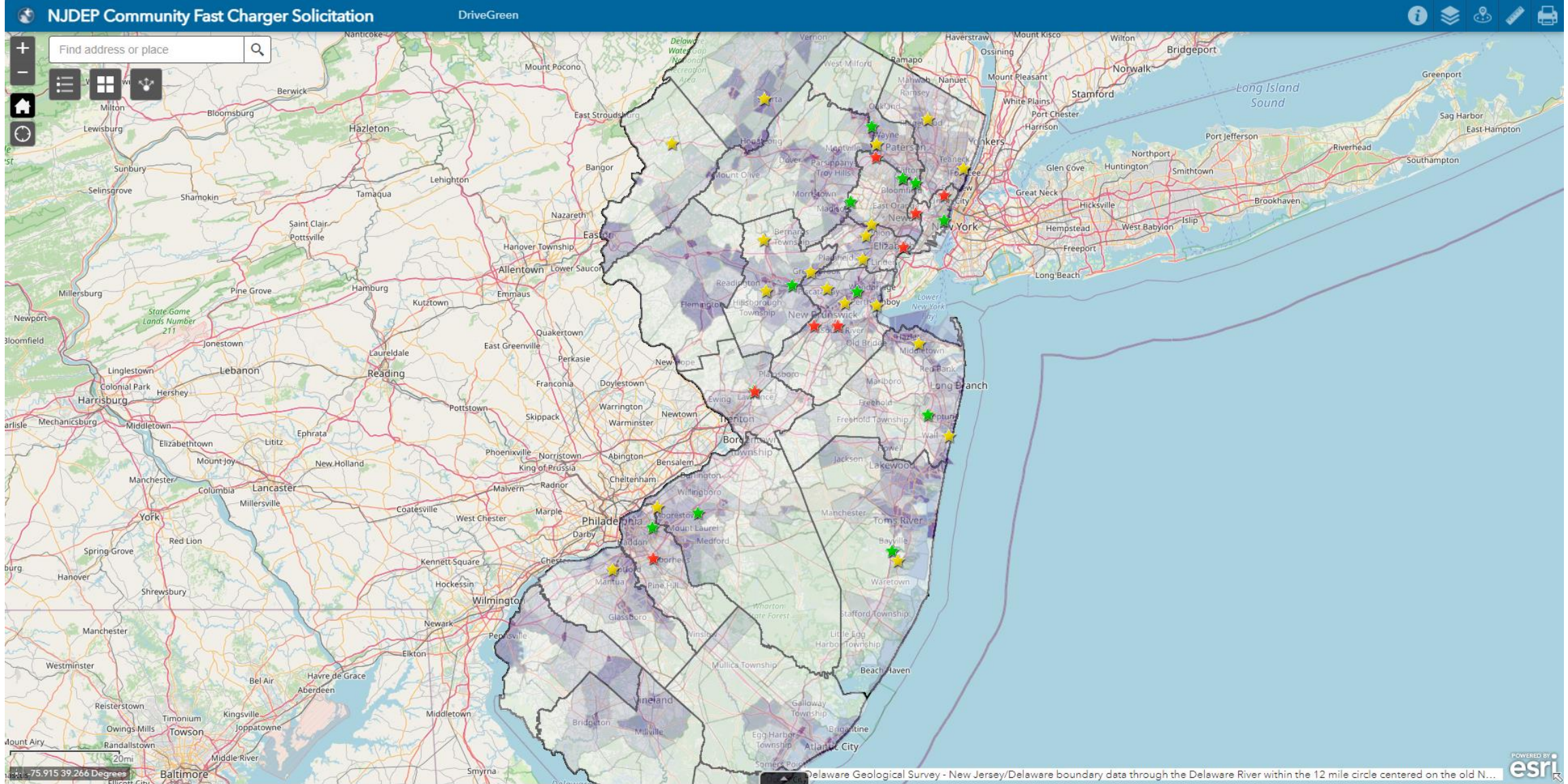
Search result

Mt Holly Library & Lyceum, 307 High St, Mount Holly, NJ, 08060, USA

[Zoom to](#)







NJDEP Community Fast Charger Solicitation

DriveGreen

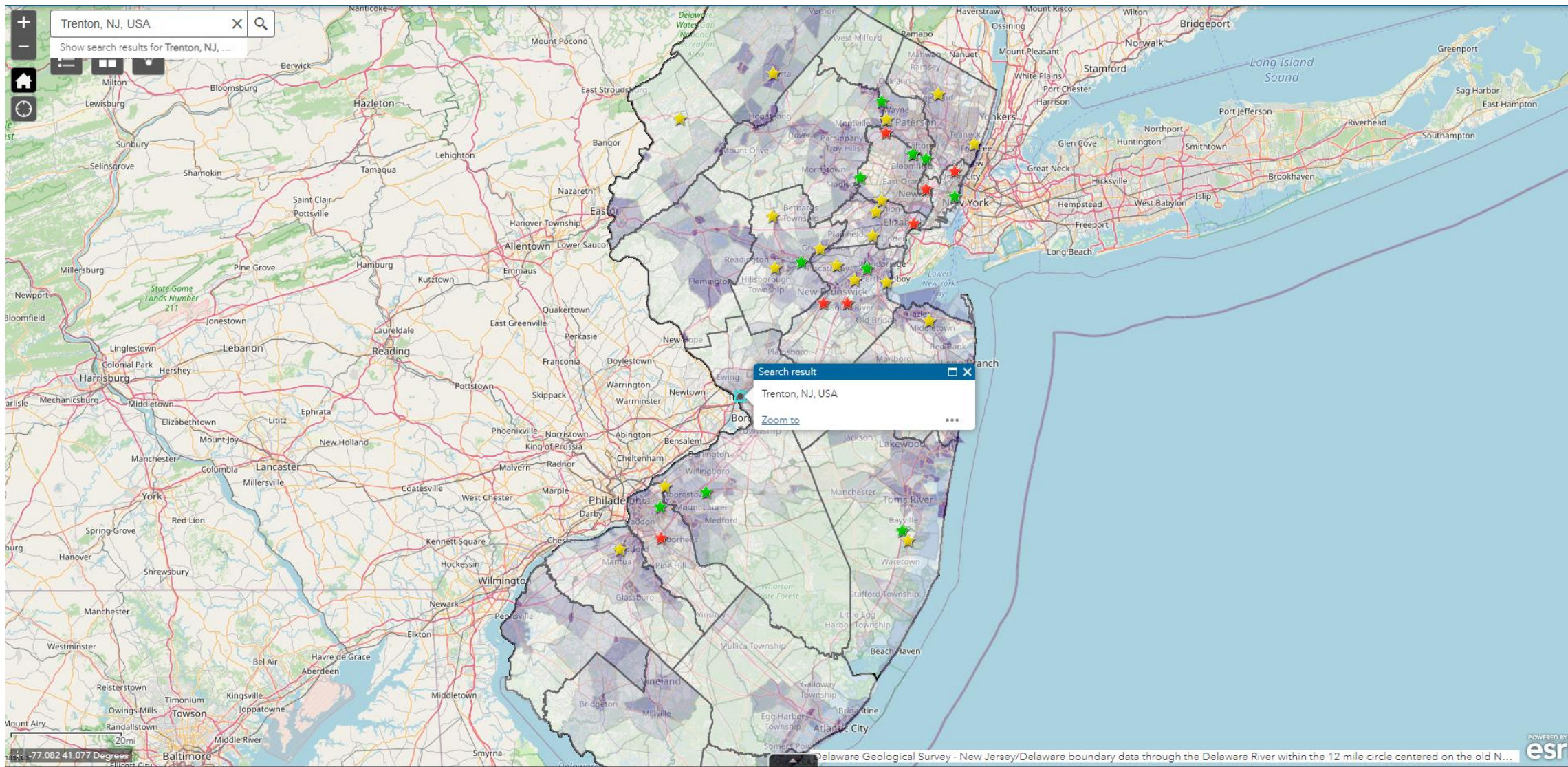


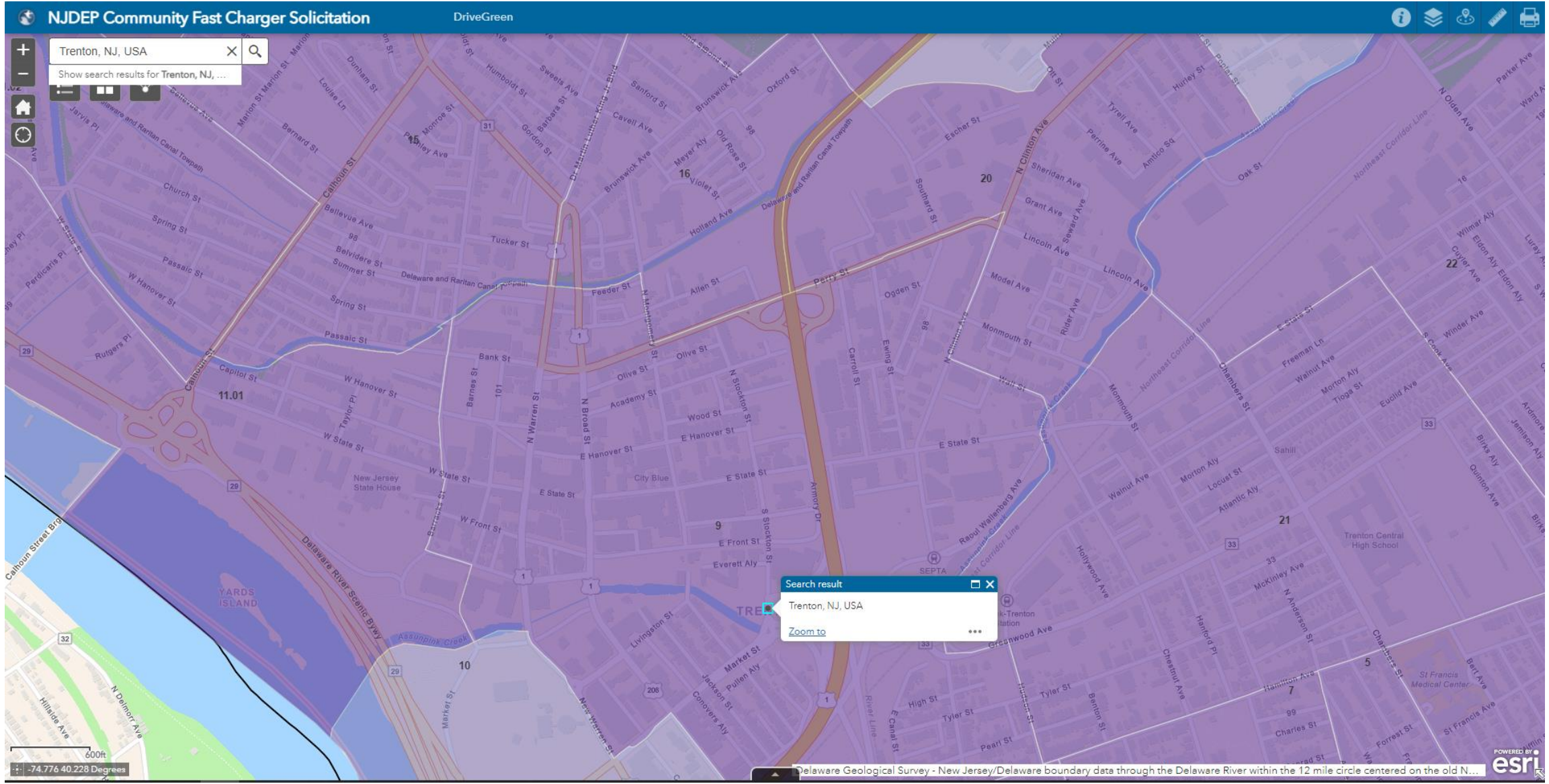
Find address or place

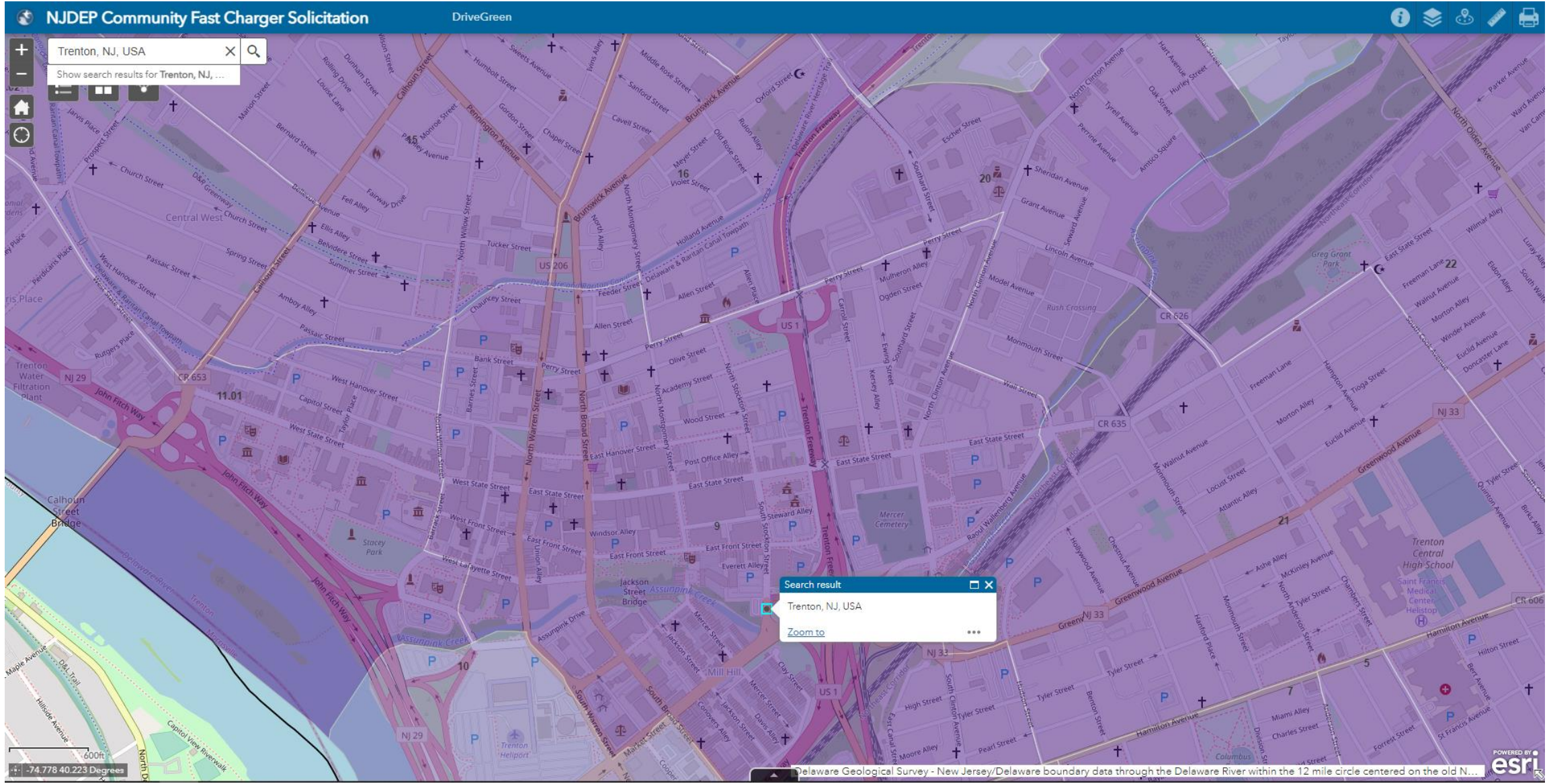


75.915 39.266 Degrees

Delaware Geological Survey - New Jersey/Delaware boundary data through the Delaware River within the 12 mile circle centered on the old N... esri







Delaware Geological Survey - New Jersey/Delaware boundary data through the Delaware River within the 12 mile circle centered on the old N...

