



NJ Climate Pollution Reduction Grant Program NWL Workshop

November 8th, 12:00PM, 2023



Meet the Team

Lead Presenter



Doug Benton
NJDEP, Climate Change &
Clean Energy

Co-Presenter



Helaine Barr
NJDEP, Climate Change &
Clean Energy

Co-Presenter



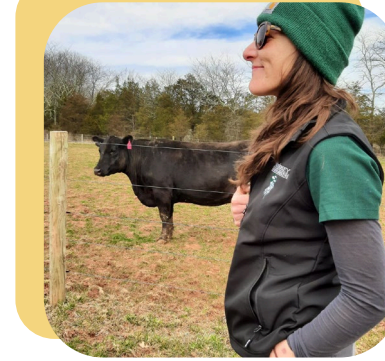
Lauren Siclare
NJDEP, NJ Forest Service

Co-Presenter



Brian McDonald
NJDEP, NJ Forest Service

Co-Presenter



Rachel DeFlumeri
NJ Department of
Agriculture

Co-Presenter



Joshua Moody
NJDEP, Division of Science &
Research

What is CPRG?

The **Climate Pollution Reduction Grant (CPRG) program** is a nationwide, two-phase EPA grant, funded via the Inflation Reduction Act

Phase One: \$250 Million

Noncompetitive planning grants to states, local governments, tribes, and territories to develop and implement climate action plans for reducing greenhouse gas emissions and other harmful air pollution.

Phase Two: \$4.6 Billion

Competitive implementation grants to carry out the greenhouse gas reduction measures proposed in the climate action plans.



For more information visit: <https://www.epa.gov/inflation-reduction-act/climate-pollution-reduction-grants>

CPRG Phase I · Grant Recipients

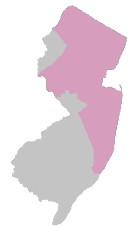
4 Planning Grants covering New Jersey



State of New Jersey

NJDEP Lead

Statewide



New York-Newark-Jersey City, NY-NJ-PA Metro Area

NYCEDC + NJTPA Lead

Covered Counties: Essex, Hunterdon, Morris, Sussex, Union, Middlesex, Monmouth, Ocean Somerset, Bergen, Hudson, Passaic



Allentown-Bethlehem-Easton, PA-NJ Metro Area

LVPC Lead

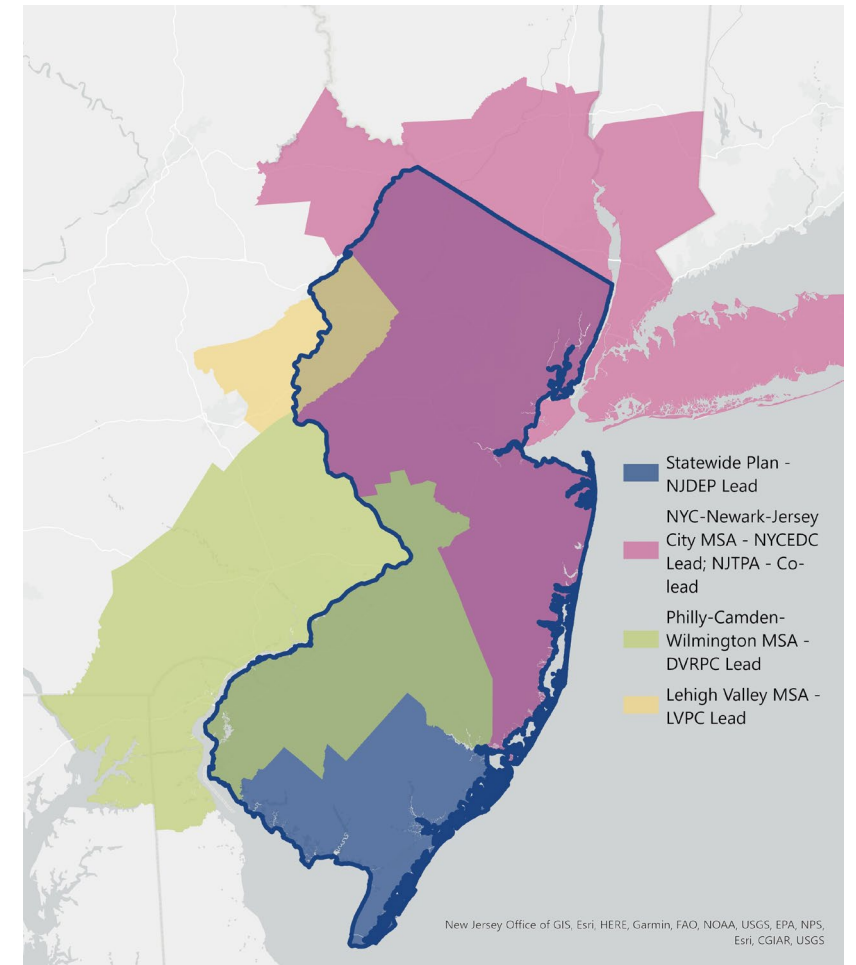
Covered Counties: Warren



Philadelphia-Camden-Wilmington, PA-NJ-DE-MD Metro Area

DVRPC Lead

Covered Counties: Burlington, Camden, Gloucester, Mercer, Salem



CPRG Workplan Areas within New Jersey

CPRG Phase I · Planning Grants

One planning grant, three deliverables over 4 years



Priority Climate Action Plan (PCAP)

Due March 2024

- Near-term, implementation ready, priority greenhouse gas reduction
- Prerequisite for implementation grant



Comprehensive Climate Action Plan (CCAP)

Due Mid-2025

- All sectors/significant greenhouse gas sources and sinks
- Near- and long-term greenhouse emission reduction goals and strategies

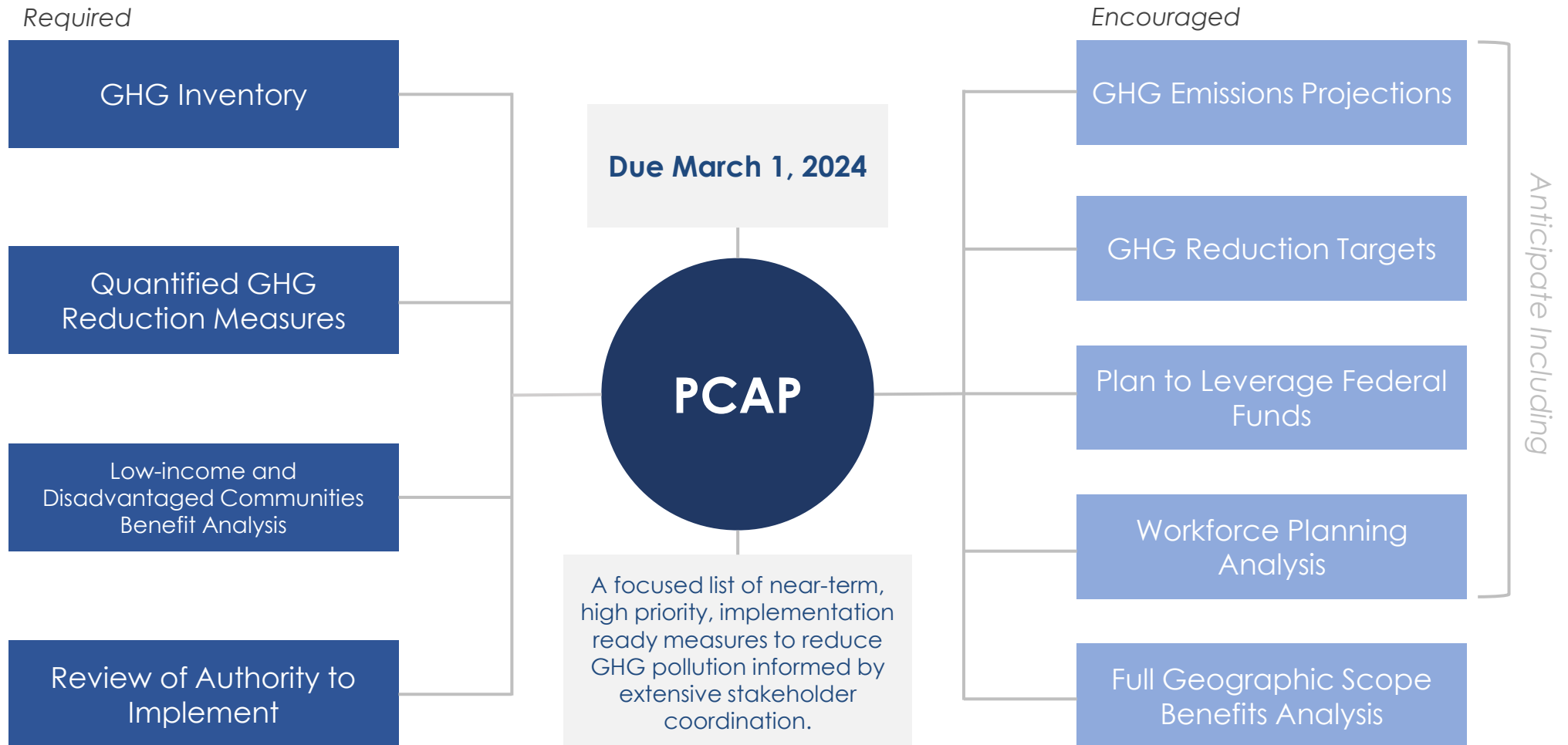


Status Update Report

Due 2027

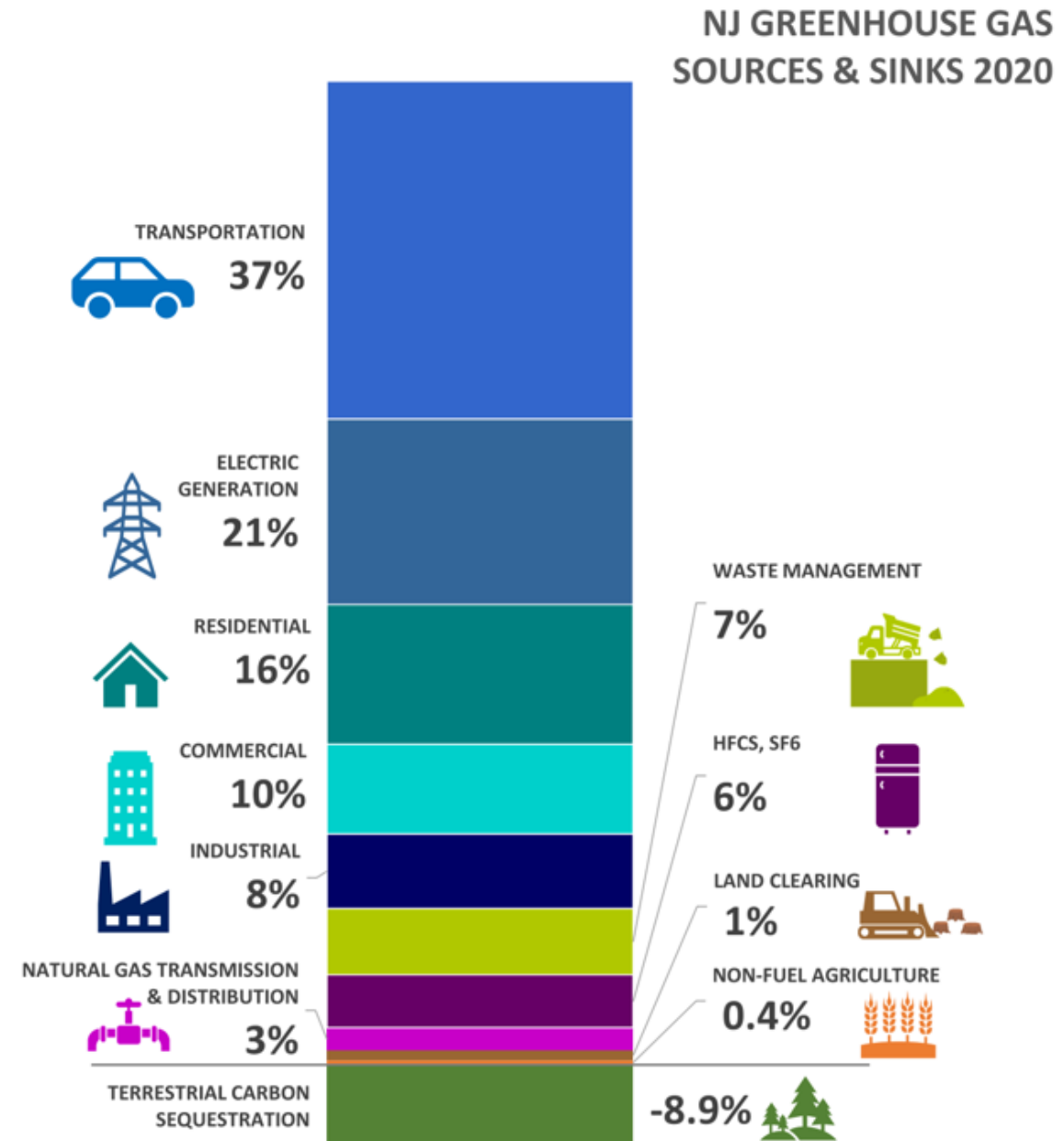
- Update on implementation, analysis and plans
- Progress and next steps for key metrics

New Jersey's Priority Climate Action Plan (PCAP)



New Jersey's Priority Sectors for PCAP

- Transportation
- Buildings
- Electric Generation
- Organic Waste
- Hydrofluorocarbons (HFCs) / Highly Warming Gases
- C-Sequestration



CPRG Phase II · Implementation Grants Eligibility

Open to entities who:

1. Received a CPRG planning grant, or
2. Eligible entities that did not receive a CPRG planning grant but are applying for funds to implement measures included in an applicable Priority Climate Action Plan

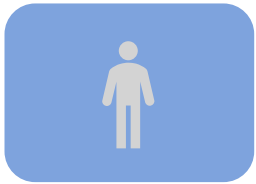
Eligible Applicants

- ✓ Metropolitan Statistical Areas (MSA)
- ✓ County
- ✓ Municipality
- ✓ Air pollution control agency
- ✓ Tribe

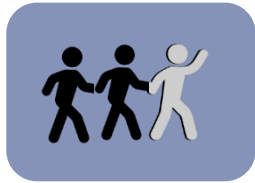
CPRG Phase II · Implementation Grant

Key Considerations

Eligible entities can submit at most two lead applications



*Individual
Application*



*Lead of a Coalition
Application*

Eligible entities can be a partner in numerous coalition applications



EPA will not award multiple grants to implement the same measures in the same location

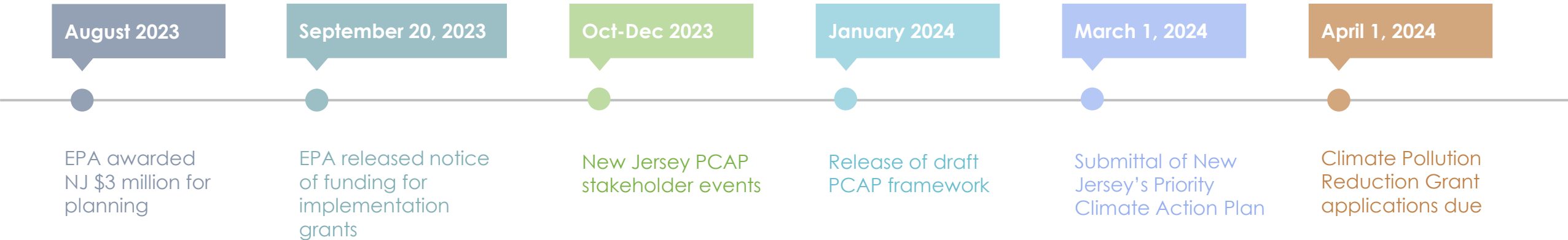
Coalitions may not submit multiple applications for the same set of GHG reduction measures using different lead applicants

Applications will be evaluated holistically

CPRG Key Deadlines

September 2023	Implementation Grant NOFO Issued
Feb 1, 2024	Notice of Intent to Apply for Implementation Grant Due
March 1, 2024	PCAP due
April 1, 2024	Implementation Grant applications due
July 2024	Awards for Implementation Grants
Summer 2025	CCAP due
2027	Status Report due

Timeline for PCAP Development



Upcoming Stakeholder Events

Upcoming Topical Workshops

- November 9th – Food Waste
- November 13th – Highly Warming Gases
- November 22nd – Buildings + Electric Generation
- November 28th – Transportation

Additional Events will be scheduled for other sectors and interest groups

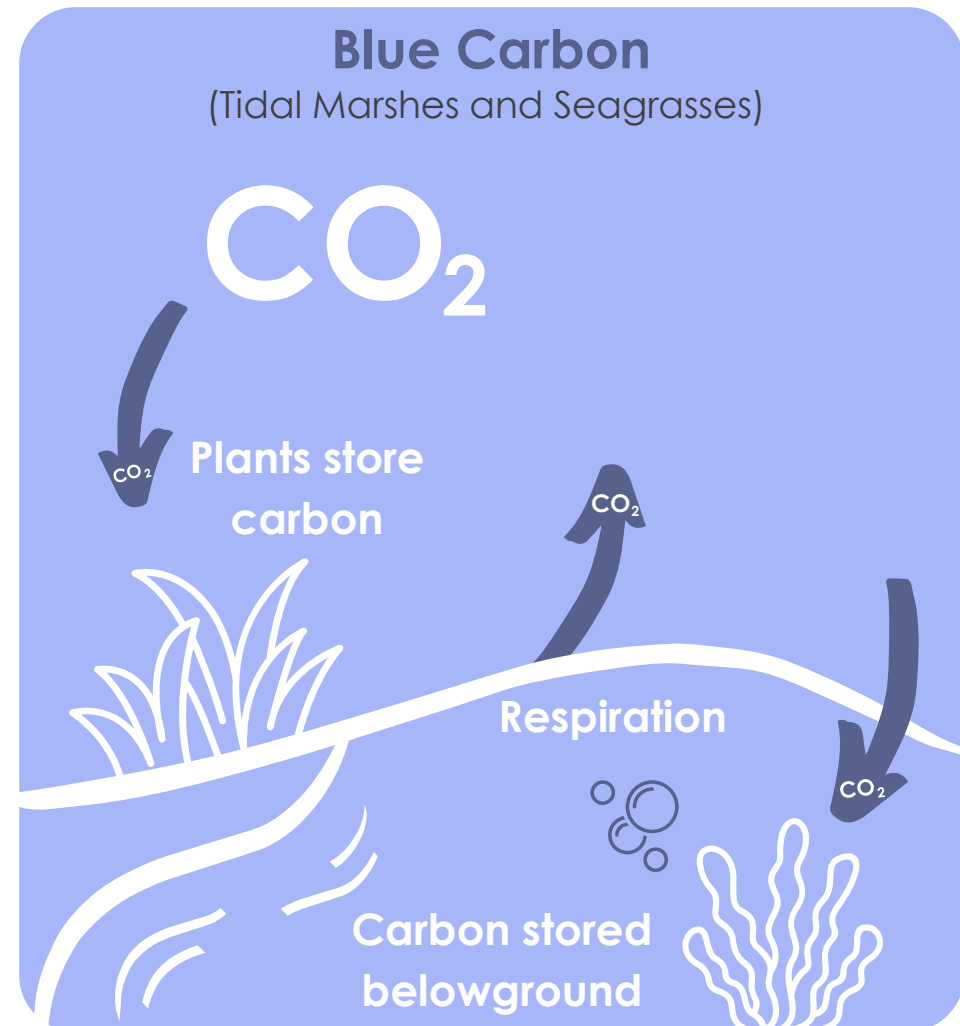
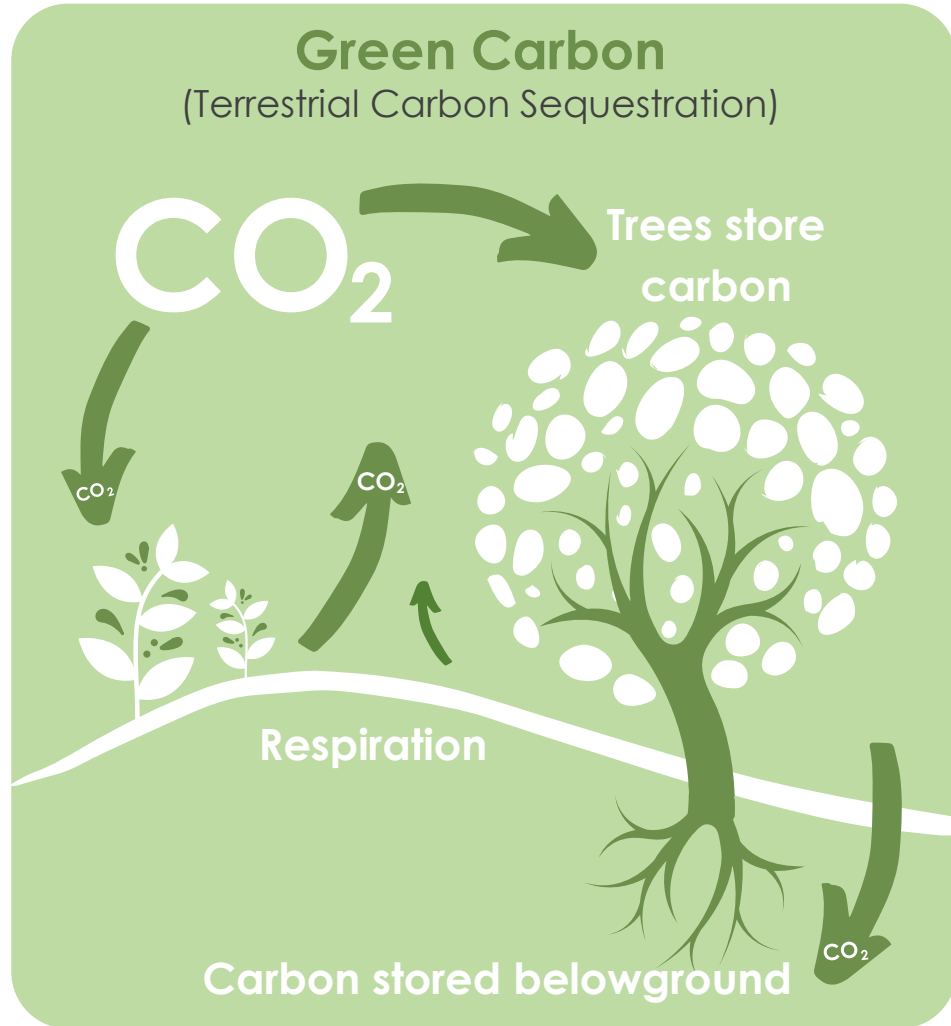
Visit Our Webpage + Join the Email List

<https://dep.nj.gov/climatechange/mitigation/cprg/>



Natural Working Lands Deep Dive

Carbon Sequestration



Natural Working Lands



Forested Lands



Developed Lands/Urban
Forestry



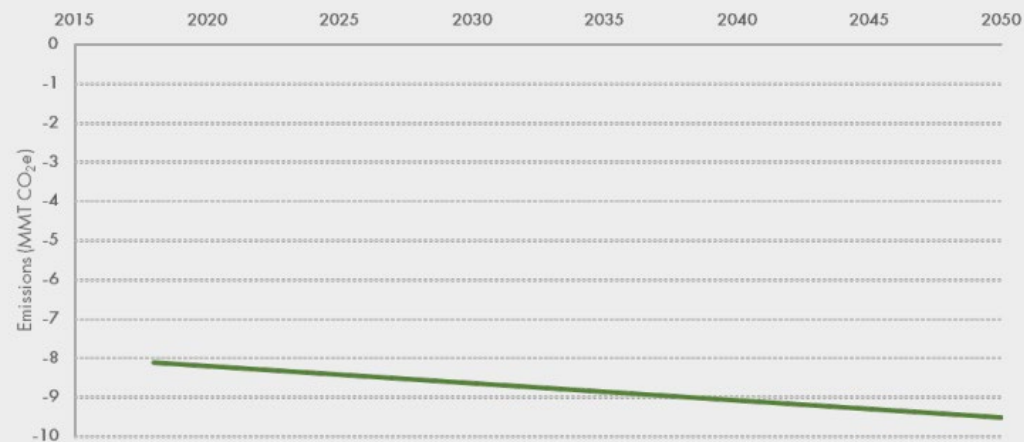
Agricultural Lands



Aquatic Habitats

Natural Working Lands Snapshot

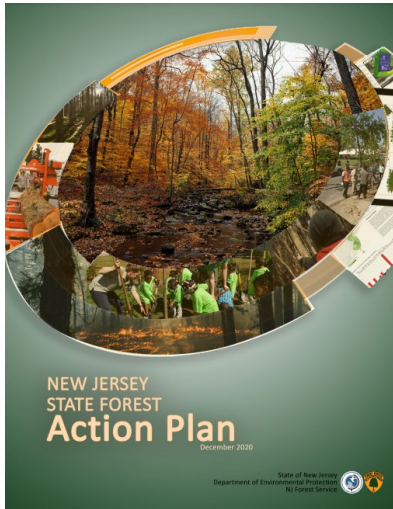
Carbon Sequestration Projection MMT CO₂e



GWRA 80x50 Report, Figure 7.2

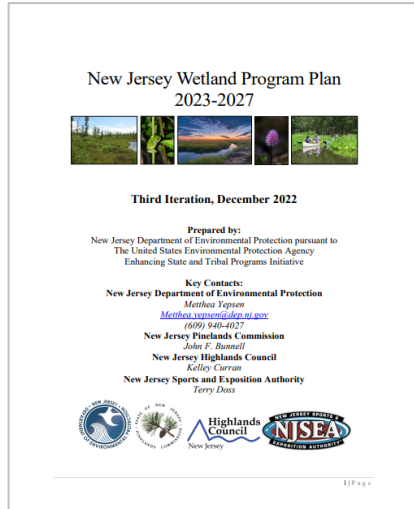
Goals	Priority Reduction Pathways
Maintain existing carbon stores and increase carbon sequestration through balanced land management strategies	1. Reforestation
	2. Avoided conversion of natural lands
	3. Salt marsh and seagrass restoration and enhancement
	4. Conservation management of agricultural lands
	5. Proactive forest management

Building on Existing Plans



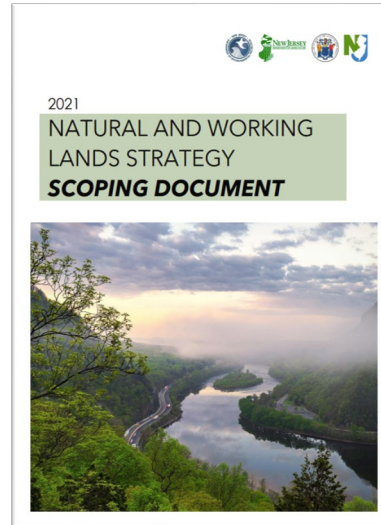
10-Year Strategic Plan

Forest Focused



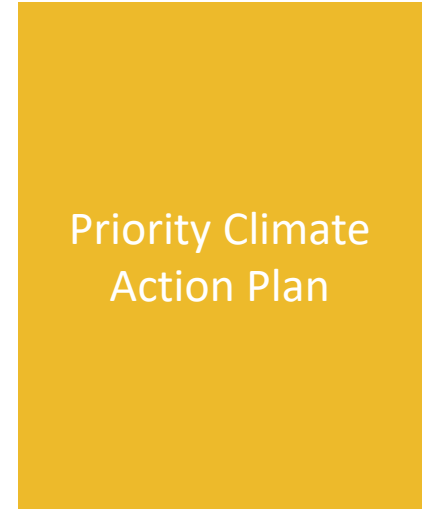
4-Year Strategic Plan

Wetland Focused



**Focused on Carbon Sequestration
Establishes Key Targets by Land Type**

Primarily focused on state land holdings



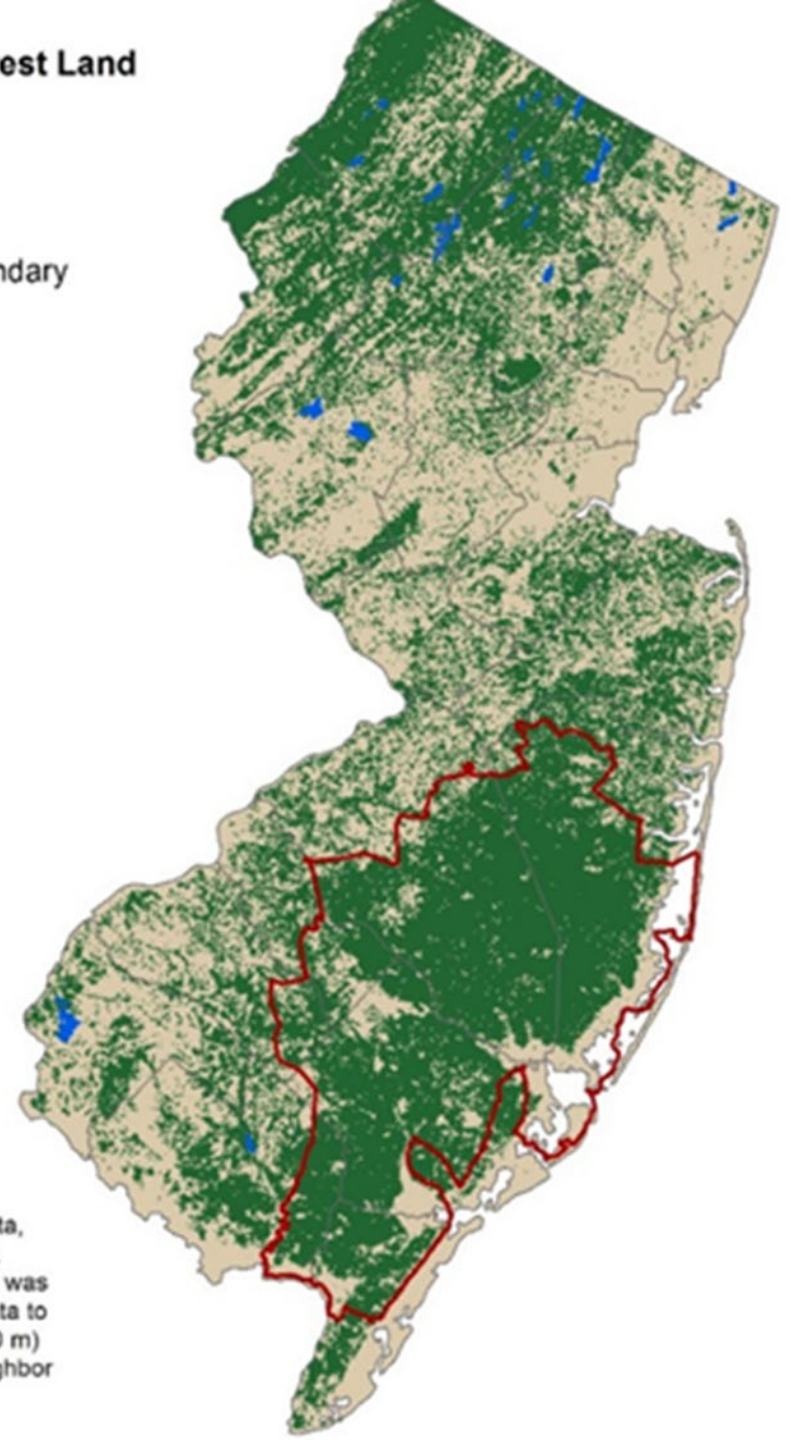
High Priority Measures

*Near term, Implementation
ready*

Context: New Jersey Forests

- New Jersey has about 2 million acres of forest
- Approximately 40% forested
- Federal, State & Local governments own 54% of forested lands
- Private Landowners own 46% of forested lands

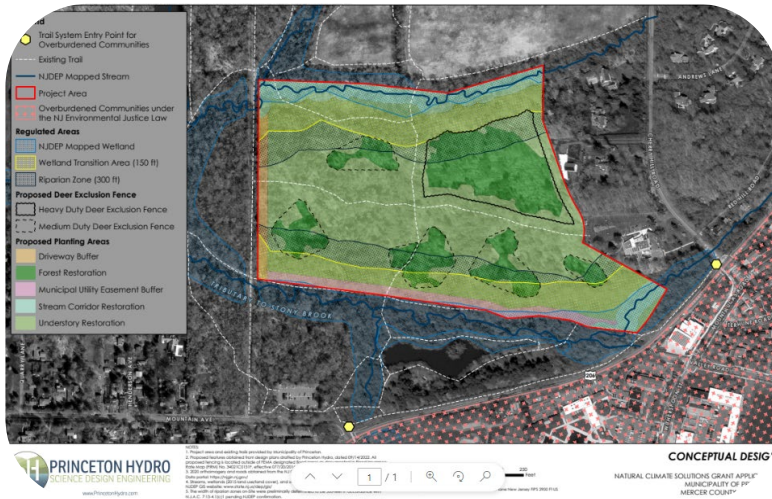
Distribution of Forest Land



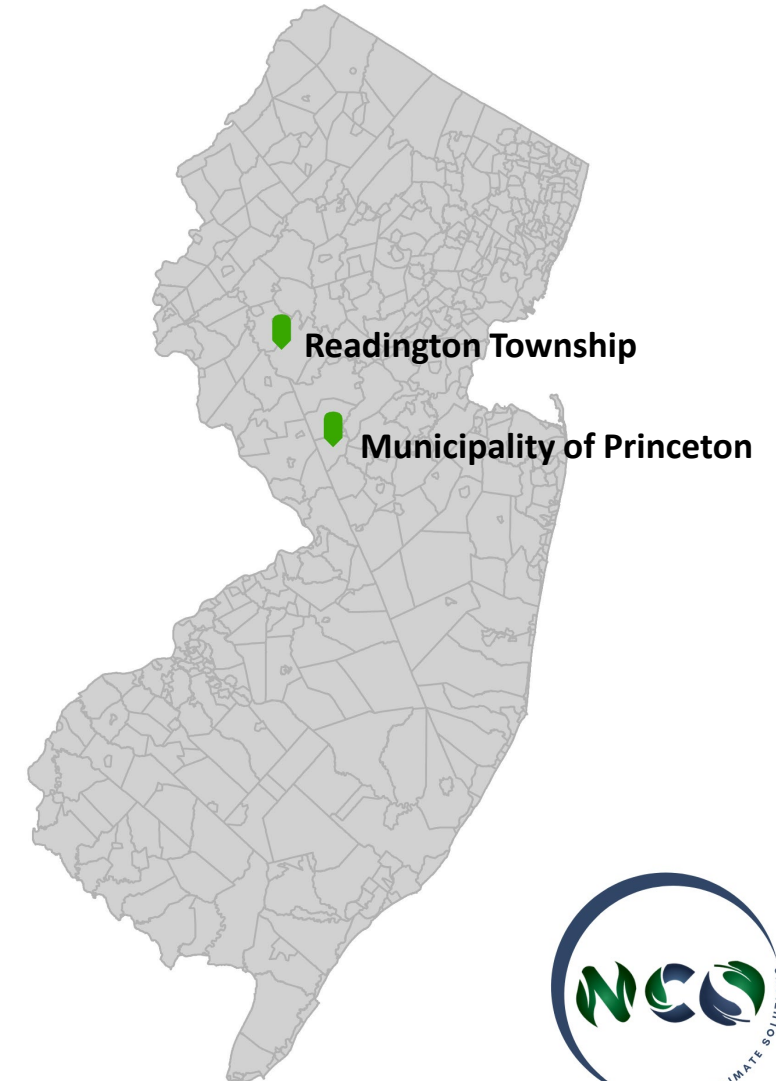
Sources: USDA-FS FIA data,
NJ Pinelands Commission.
Processing note: This map was
produced by linking plot data to
MODIS satellite pixels (250 m)
using gradient nearest neighbor
techniques.

Natural Climate Solutions Program

- Funds forest restoration and afforestation projects
 - 2 afforestation/reforestation projects selected
 - Total award of \$802,000
 - Total acres of forests to be restored: 56
 - Total number of trees to be planted: 12,941



Community Park North Forest Restoration
Princeton, NJ





Forest Stewardship Program

- Provides technical and financial assistance to private woodland owners
- Funds creation of a management plan for wood products, as well as wildlife, forest restoration, forest health, invasive species control and water quality.

Urban and Community Forestry Program

- Assists local governments in New Jersey to manage urban trees and community forest
- Supports the creation of community forest management plans
- Provides Training and Education
- Funds tree planting efforts

2022 NJ Urban & Community Forestry by the Numbers



253 active community forestry management plans

166 municipalities & counties accredited

4208 hours of continuing education courses

163 CORE training participants

\$1,086,934 in grant money awarded across 22 communities



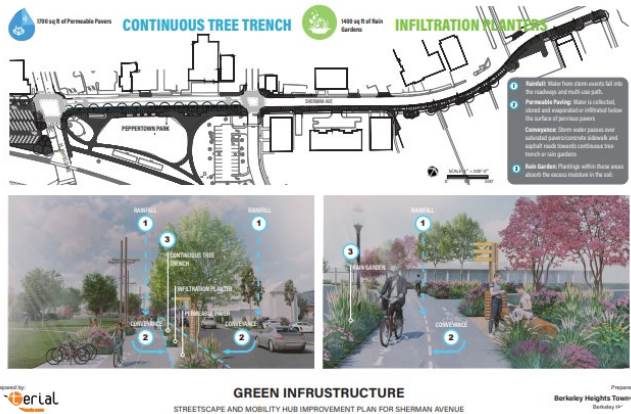
Context: New Jersey Urban and Community Forests

- 243 communities have an active plan for their urban forest.
- Approximately 85% of NJ's population lives under a managed or developing canopy.
- 416 communities have a local tree advocacy or advisory group.

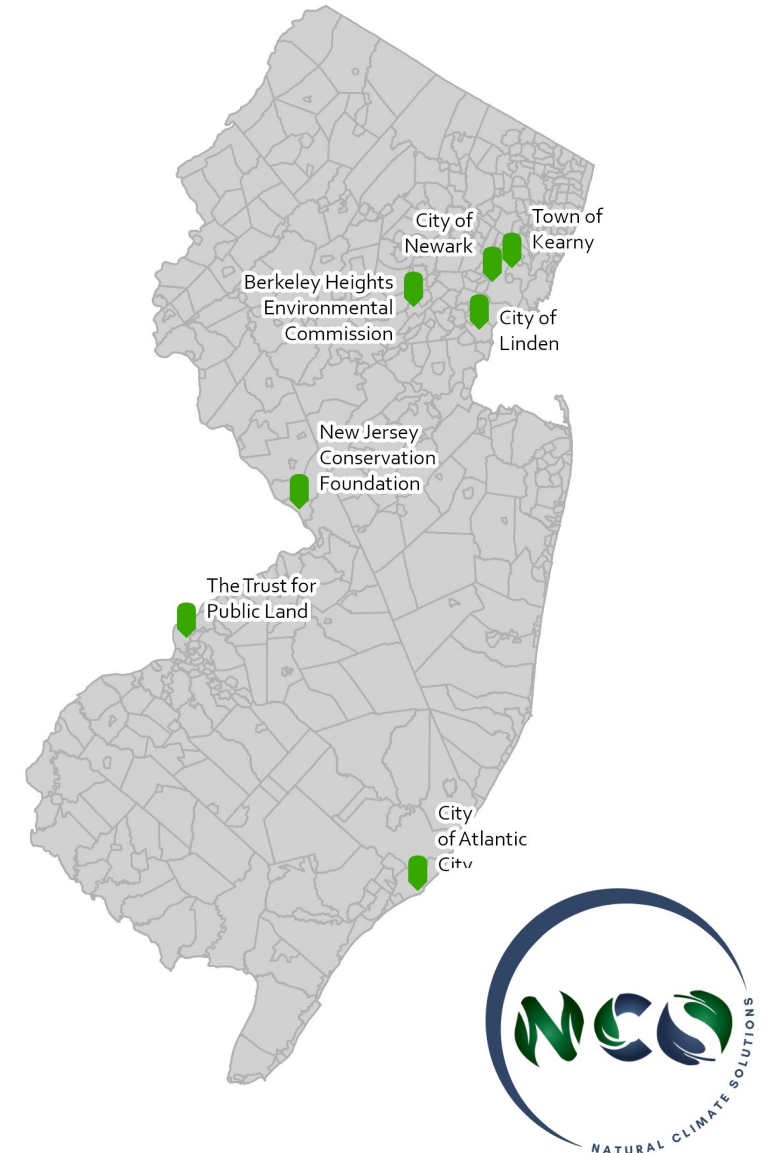


Natural Climate Solutions Program

- Funds large scale urban tree plantings
 - 7 projects selected
 - Total award of \$5.94 Million
 - Total number of trees to be planted: 4,041

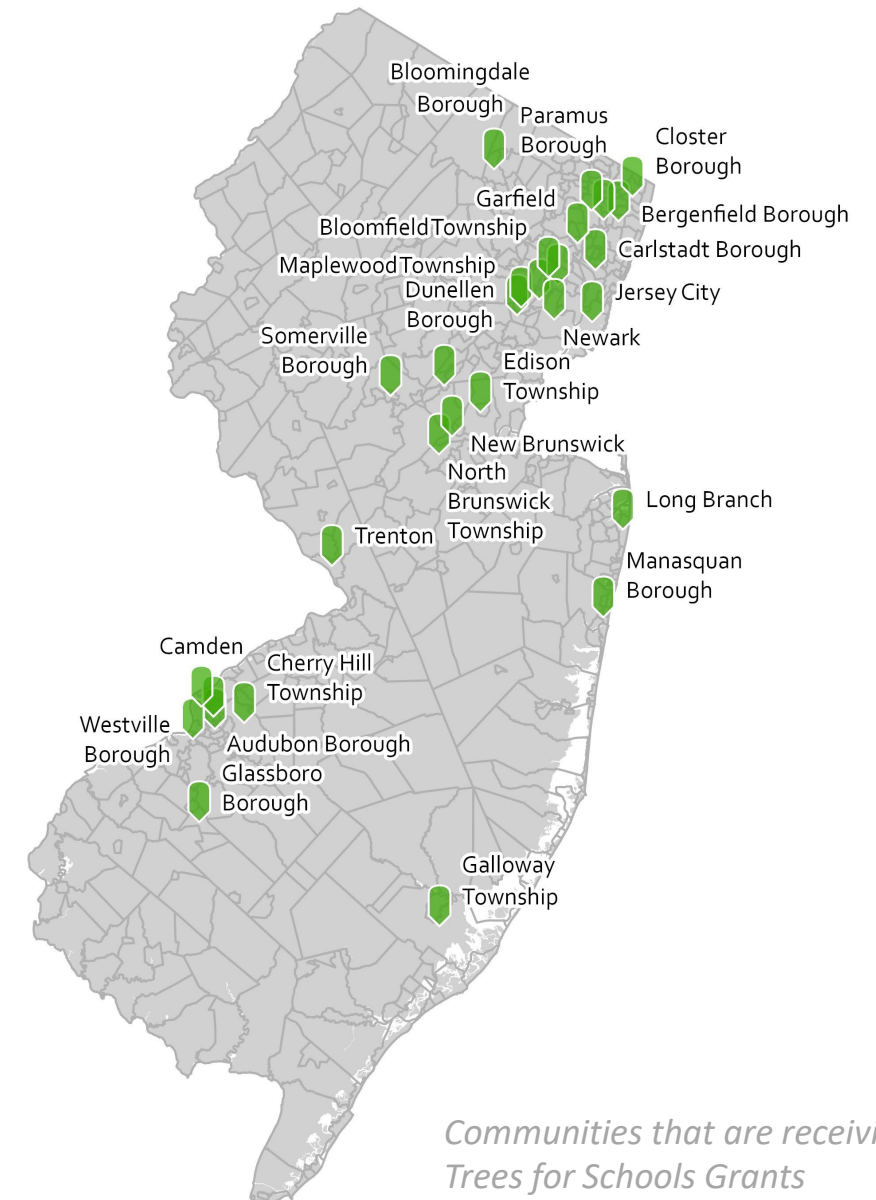


Berkeley Heights Tree Canopy Restoration
Berkeley Heights, NJ



Trees for Schools

- Funds tree plantings on K-12 Schools and Public Universities
 - 34 projects selected
 - Total award of \$4.55 Million
 - Total Trees Funded: 3,233



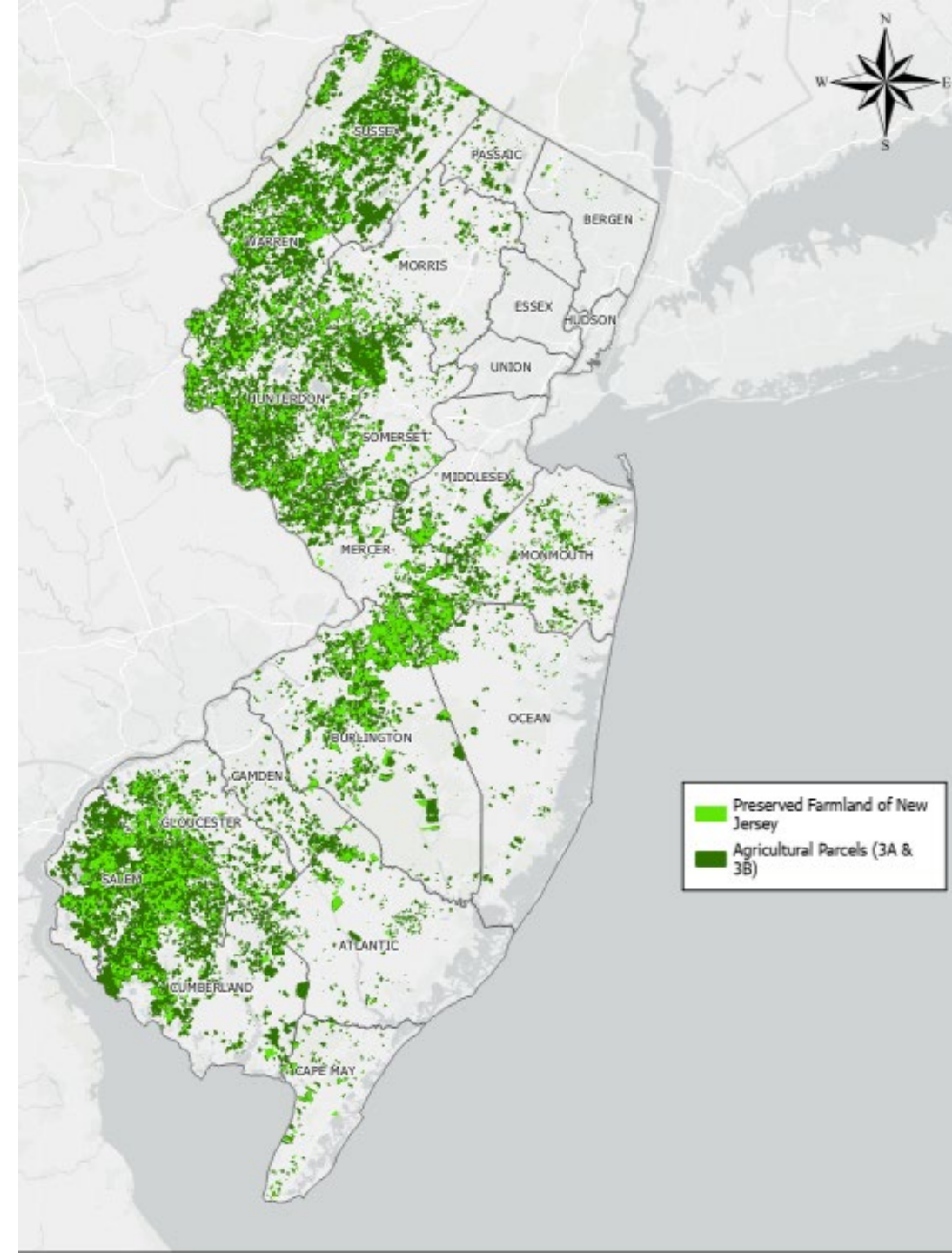
*Communities that are receiving
Trees for Schools Grants*

Context: New Jersey Farmland

- Agricultural Parcels: 750,000 acres
- Preserved Farmland: 277,060 acres
- Number of Farm Operations: 9,900

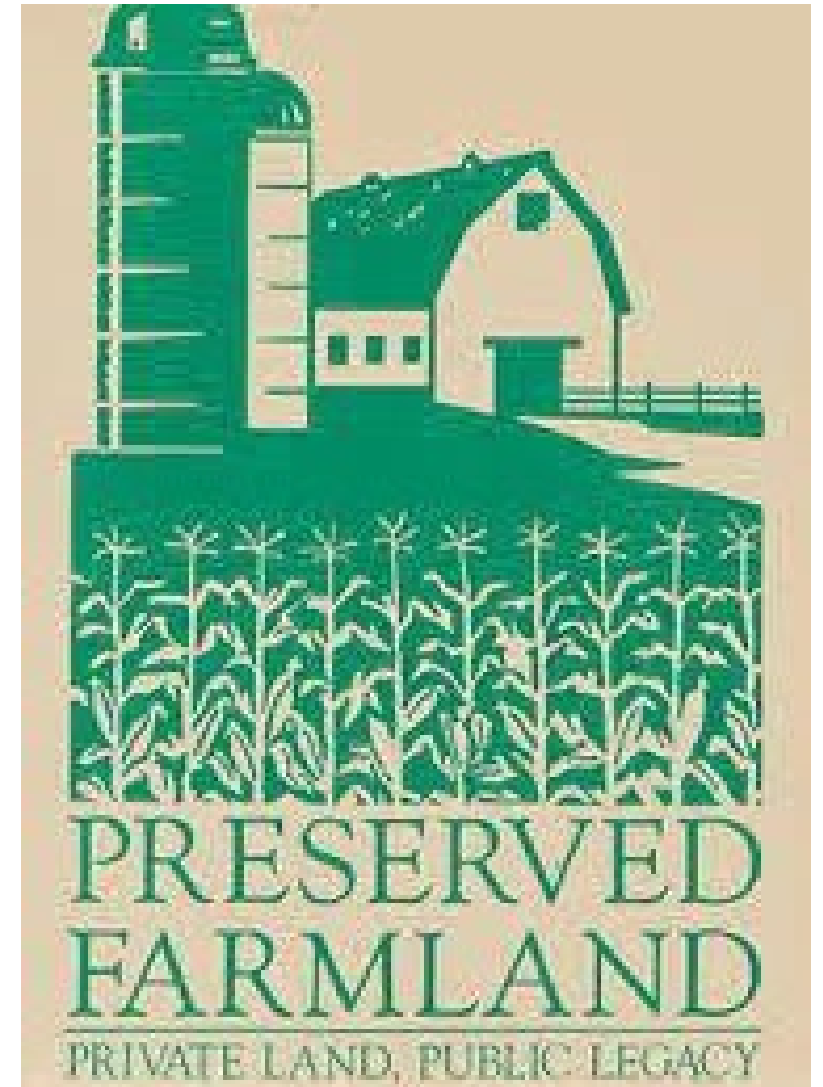
Climate Smart Practices (USDA 2017)

- Planting cover crops: 63,000 acres
- No-till practices: 104,499 acres



State Agricultural Programs

- **NJDA- State Agricultural Development Committee (SADC)**
 - Administers NJ Farmland Preservation Program
 - Stewardship and on-farm Monitoring (post-preservation)
 - Conservation plan required within (1) year of preservation
 - Soil and Water Conservation Grants
 - Provides 50 to 75% cost share on farm conservation projects for preserved or term preserved farms
 - Right-to-Farm (RTF) Program
 - Development of Agricultural Management Practices (AMPs)





NEW JERSEY
DEPARTMENT OF AGRICULTURE

State Agricultural Programs

- **NJDA- Agricultural and Natural Resources**
 - Deer Fencing
 - Interagency Grants
 - Manure-link (NRCS-CIG)
 - NJDEP-319
 - Conservation Cost Share Grants
 - Technical and financial assistance provided for development of management plans for farmers and landowners using BMPs for erosion and sediment control, animal waste management, and other resource concerns
 - NJ Soil Conservation Districts
 - (14) located throughout the State

Conservation Agencies Throughout State

- North Jersey RC & D
- NOFA-NJ
- NJ Agricultural Land Trust
- The Land Conservancy NJ
- Trust for Public Land NJ
- NJ-Audubon
- Food Shed Alliance
- Rutgers University and Cooperative Extension

Many throughout the State not listed, potential to expand to other groups in neighboring states.

Expansion of State Agricultural Conservation

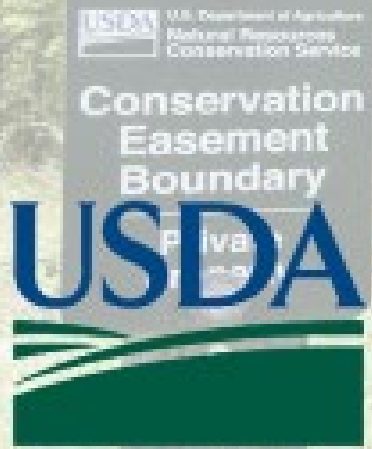
- **Conservation Cost Share Program (CCSP)**
 - Program administered by NJDA-Division of Agricultural and Natural Resources
 - Grant applications are approved by State Soil Conservation Committee (SSCC)
 - Cost share can be applied to non-preserved farms
 - Can cover up to 75% (not to exceed) of the actual project cost
 - State grant funds can be tied to NRCS-EQIP funds



Conservation Planning

- State Specific NJ Field office Technical Guide (FOTG)
- TSP-Certified Conservation Planner
 - Levels I through IV
- Technical Service Providers (TSPs) to meet with farmers and landowners, to identify resource concerns on-site, and select conservation practices to address and improve environmental resources.
 - These conservation practices are identified within a conservation plan
- Climate smart practices





**United States
Department of
Agriculture**

Natural Resources Conservation Service

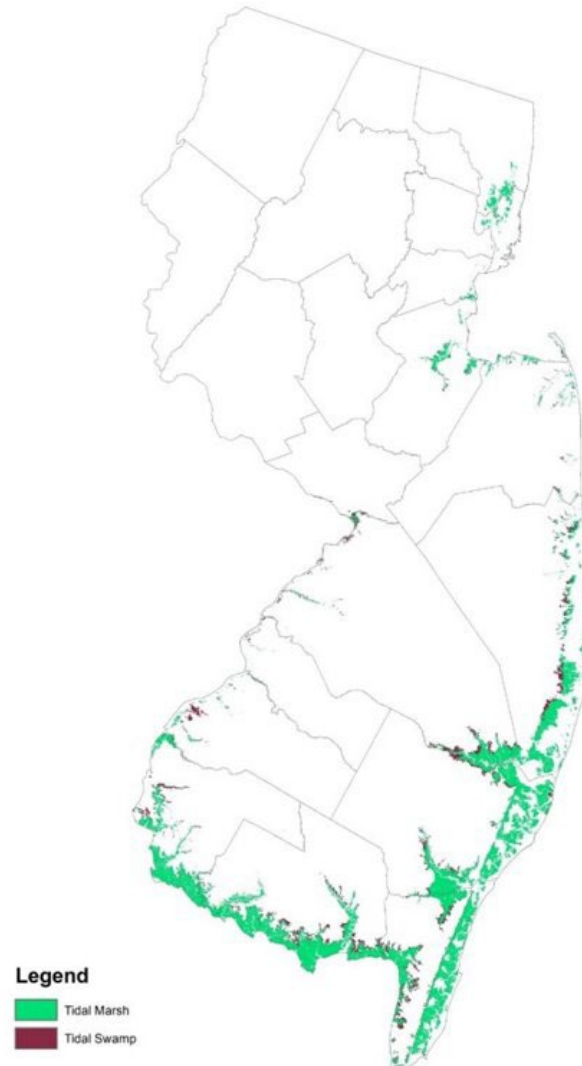
USDA-NRCS Programs

NRCS Programs

- Environmental Quality Incentive Program (EQIP)
 - Initiation of on-farm conservation projects
- Conservation Stewardship Program (CSP)
 - Maintenance and expansion of existing on-farm conservation projects
- Land Preservation Programs
 - Agricultural Land Easement (ALE)
 - Wetland Reserve Easement (WRE)

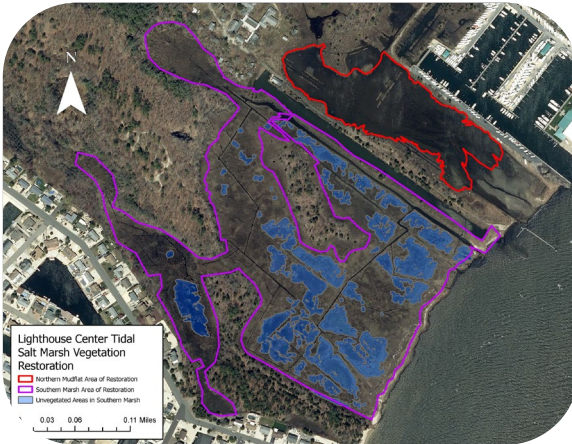
Context: New Jersey Coastal Wetlands

- 200,000 acres of tidal wetlands
 - Freshwater tidal marsh
 - Brackish marsh
 - Salt marsh
 - Sea level fens
 - Tidal swamps
- Ecosystem services
 - Improving water quality
 - Fish and wildlife habitat
 - Flood protection
 - Carbon sequestration
 - Nutrient Removal

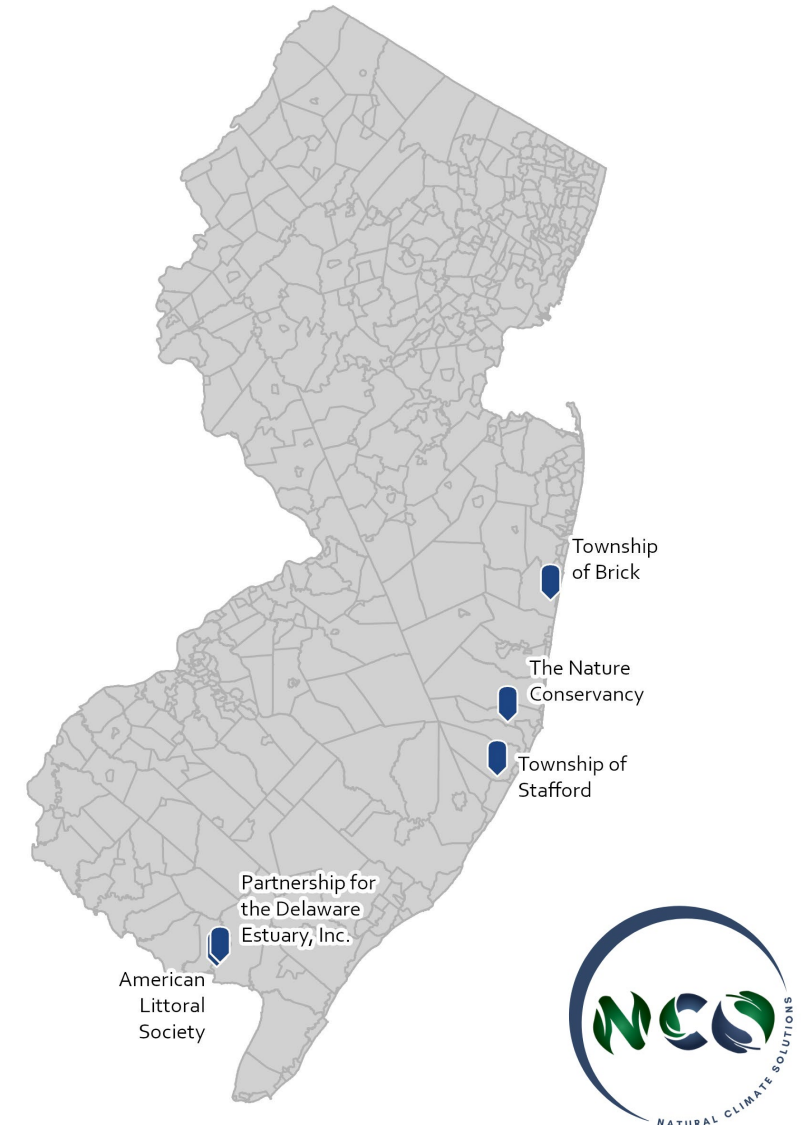


Natural Climate Solutions Program

- Funds large tidal wetland restoration and living shorelines
 - 5 projects selected
 - Total award of \$17.6 Million
 - Total acres of wetland to be restored: 155.6



Restoring Salt Marsh Habitats at Lighthouse Center
Waretown, NJ



Other Supportive Programs

Water Quality
Restoration Grants
for Nonpoint Source
Pollution

(319 Grant Program)

Office of Natural
Resource
Restoration

Blue Acres Program

Coastal
Management
Program

Potential Priorities



Forests

- Reforestation/Afforestation Funding
- Urban Tree Planting Funding
- Agroforestry Programs
- Tree Nursery Initiatives
- Carbon Market Programs
- Private Landowner Conservation Plans
- Risk Reduction by Thinning + Prescribed burning



Developed Lands/Urban Forestry



Agricultural Lands

- Technical Service Providers for Farmland Conservation Plans
- Silvio Pasture Programs
- Cover Cropping
- Improved Cropland Nutrient Management



Coastal Wetlands/Aquatic Resources & Habitats

- Tidal Wetland Restoration Funding
- Living Shoreline Funding
- SAV Restoration Funding
- Protection of Tidal Wetland Migration Zones



Thank you!

