



WATER RESOURCE MANAGEMENT

Division of Water Quality

Overview for the Clean Water Council



NEW JERSEY
DEPARTMENT OF
ENVIRONMENTAL
PROTECTION

3/15/2024

WATER RESOURCE MANAGEMENT
Confidential & Deliberative

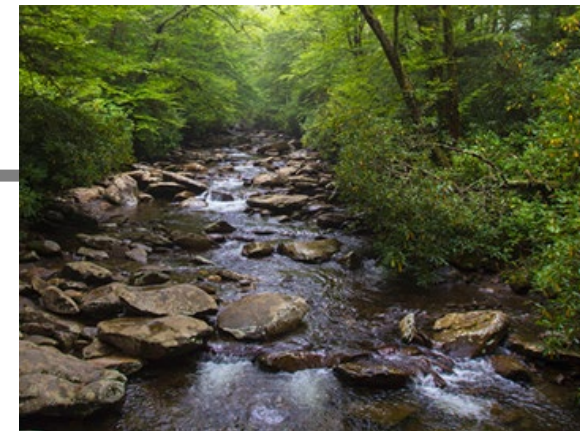


The Division of Water Quality

is a division within

Water Resource Management

- Water Resource Management (WRM) is under the direction of: **Assistant Commissioner Patricia Gardner**
- The Division of Water Quality (DWQ) is under the direction of: **Assistant Directors - Sue Rosenwinkel & Charles Jenkins**
- DWQ is one of 4 divisions within WRM



Where does DWQ fit in?



Commissioner
Shawn M. LaTourette



**NEW JERSEY
DEPARTMENT OF
ENVIRONMENTAL
PROTECTION**



Deputy Commissioner
Sean Moriarty



**Office Of
Environmental Justice
Director**
Kandyce Perry



**Office Of Climate
Resilience
Chief Resilience Officer**
Nicholas Angarone



**Management And Budget
Asst Commissioner**
Adrienne Kreipke



Chief Of Staff
Jane Rosenblatt Birkhofer

- Legal & Regulatory Affairs Chief Advisor**
Paul Stofa
- Office Of Legal Affairs Director**
Vacant
- Office Of Dispute Resolution**
Linda Taylor
- Office Of Transactions & Public Land Admin Director**
Robert Guzek
- Litigation & Regulatory Support**
Mike Gordon

- Office Of Legislative Affairs Director**
Bryana Deveaux
- Office Of Enforcement Policy Chief Enforcement Officer**
Kimberly Cahall

- Div Of Budget & Financial Ops Director**
Stephen Matis
- Div Of Information Technology Director**
Peter Tenebruso
- Div Of Health, Safety & Facility Management Director**
Jeffrey MacMullen
- Div Of Human Resources Director**
Juliet Delvalle
- Chief Diversity, Equity & Inclusion Officer**
Monise Princilus
- Office Of Equal Opp & Public Contract Assistance Director**
Rohini Gandhi

- Office Of Permitting And Project Navigation Director**
David Pepe
- Office Of Communications & Outreach Chief Communications Officer**
Kelley Heck
- Office Of Emergency Management Director**
Robert Van Fossen
- Deputy Chief Of Staff**
Megan Brunatti
- Div Of Science & Research Director**
Nicholas Procopio
- Office Of Env & Public Health Analysis**
Christine Schell



**Investment & Economic Revitalization
Asst Commissioner**
Elizabeth Dragon



**Fish & Wildlife
Asst Commissioner**
David Golden



**Water Resources
Management
Asst Commissioner**
Patricia Gardner



**State Parks, Forests & Historic Sites
Asst Commissioner**
John Cecil



**Air, Energy & Materials
Sustainability
Asst Commissioner**
Paul Baldauf



**Contaminated Site Remediation & Redevelopment
Asst Commissioner**
David Haymes



**Watershed & Land
Management
Asst Commissioner**
Katrina Angarone

- Community & Local Government Assistance Manager**
Arthur Zanfini
- Div Of Green Acres Director**
Martha Sapp
- Office Of Natural Resource Restoration Manager**
David Bean
- Historic Preservation Office Administrator**
Kate Marcopul
- Economic Analysis & Development Chief Economist**
Michael Russell

- Conservation Police Chief Conservation Officer**
Frank Panico
- Marine Resource Administration Administrator**
Joseph Cimino
- Species And Habitat Conservation Administrator**
Lisa Barno
- Communications & Business Admin Administrator**
Virginia Kopkash

- Div Of Water Supply & Geoscience Director**
Patricia Ingelido
- NJ Geological Survey State Geologist**
Steven Domber
- Div Of Water Quality Director**
Vacant
- Div Of Water Enforcement Director**
Carlton Dudley
- Div Of Water Monitoring, Standards & Pesticide Control Director**
Victor Poretti

- Chief Of Operations**
Robin Madden
- State Parks Administrator**
Rebecca Fitzgerald
- State Historic Sites Administrator**
Edward Texel
- Urban State Parks & Initiatives Administrator**
Craig Dorsett
- State Park Police Chief**
George Fedorczyk
- State Forest Fire Service & Forestry Administrator**
Gregory McLaughlin

- Div Of Air Quality And Radiation Protection Director**
Francis Steitz
- Division Of Climate Change Mitigation And Monitoring Director**
Margaret Hanna
- Div Of Air Enforcement Director**
Richelle Wormley
- Div Of Sustainable Waste Management Director**
Janine Macgregor
- Div Of Waste & UST Compliance And Enforcement Director**
Michael Hastry

- Div Of Remediation Management Director**
Gwen Zervas
- Div Of Enforcement, Tech & Fin Support Director**
Vacant

- State Floodplain Administrator**
Vincent Mazzei
- Div Of Land Resource Protection Director**
Jennifer Moriarty
- Div Of Watershed Protection & Restoration Director**
Anika Andrews
- Div Of Resilience Engineering & Construction Director**
Dennis Reinknecht

July 18, 2023



The 4 Divisions of WRM

Division of Water Supply & Geoscience

- DWSG works to ensure New Jersey's water supply is adequate, reliable, safe, and available for the future, based on sound science.

Division of Water Quality

- DWQ has the primary responsibility for protecting New Jersey's surface and ground waters from pollution caused by improperly treated wastewater and its residuals.

Division of Water Enforcement

- DWE is responsible for ensuring compliance with the State's water programs. Their focus is placed on inspections of wastewater discharge, community drinking water supply facilities and stormwater management.

Division of Water Monitoring, Standards & Pesticide Control

- DWMSPC regulates pesticides and assess New Jersey's waters to protect and manage public drinking water supplies, recreational uses, shellfish harvesting, and also the health of aquatic organisms, in accordance with State and Federal regulations.



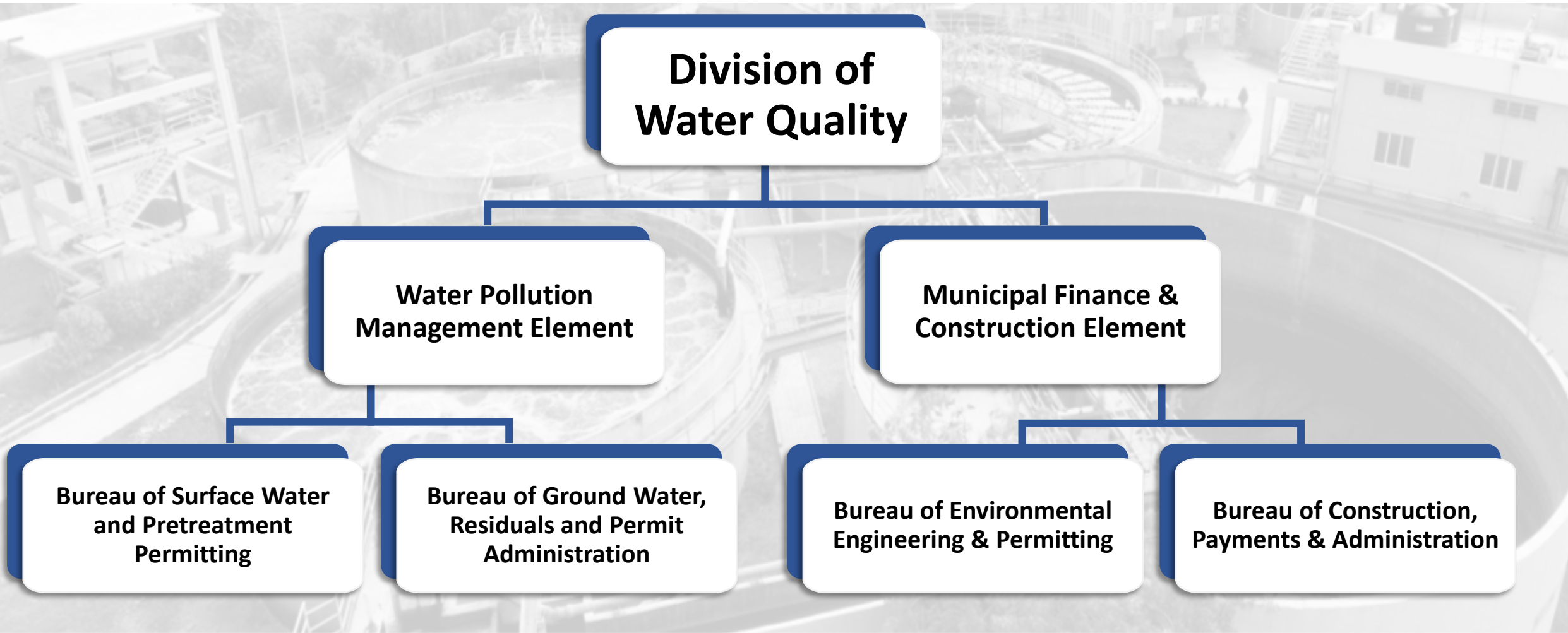
The Division of Water Quality

“DWQ’s mission is to protect NJ's ground and surface water quality by assuring the proper treatment and discharge of wastewater (and its residuals) from various types of facilities and activities through NJPDES permits which limit the number of pollutants discharged into the waters of the state and to assist communities to construct and fund sustainable infrastructure that protects water quality and public health.”





Division of Water Quality





Water Pollution Management Element

WPME is responsible for protecting New Jersey's ground and surface water quality by assuring the proper treatment and discharge of wastewater (and its residuals) from various types of facilities and activities, including the generation, monitoring, and management of residuals and residuals derived products.

One of WPME's main functions is the issuance of NJPDES permits, which provide the foundation for the reduction and removal of pollutants being discharged into the waters of the state.

The NJPDES Program's goals are to:

- Restore, enhance, and maintain the chemical, physical, and biological integrity of the waters of the state
- Protect public health and safety
- Protect potable water supplies
- Safeguard fish and aquatic life as well as scenic and ecological values
- Enhance the domestic, municipal, recreational, industrial, agricultural, and other uses of water
- Prevent, control, and abate water pollution



WPME:

Bureau of Surface Water and Pretreatment Permitting



BSWPP regulates facilities discharging domestic and industrial wastewater directly into surface waters of the State as part of the NJPDES program and implements the State's Pretreatment Program.

- Surface Water Permitting
- Pretreatment Programs
- Water Assessments



WPME:

Bureau of Ground Water, Residuals and Permit Administration



BGRPA regulates facilities discharging pollutants to ground waters of the State as part of the NJPDES program and manages onsite wastewater. BGRPA also manages the residuals program and permit administration which provides information management and administrative support to DWQ.

- ➡ Ground Water Permitting
- ➡ Onsite Wastewater Management Program (Septic Systems)
- ➡ Residuals Management
- ➡ Permit Administration Section



Municipal Finance and Construction Element

MFCE is responsible for the administration of several state and federally funded programs for the planning, design, and/or construction of wastewater, drinking water, and stormwater/nonpoint source management programs. MFCE also assists communities to construct and fund sustainable infrastructure that protects water quality and public health.

MFCE also administers the following:

- ➡ Treatment Works Approval (TWA)
- ➡ Capacity Assurance, the Sewer Ban
- ➡ Clean Watersheds Needs Survey (CWNS)

The TWA program regulates the construction and operation of wastewater treatment and conveyance systems, while the Capacity Assurance and Sewer Ban programs prevent further pollution by restricting additional sewage flow to non-conforming treatment and conveyance systems.



MFCE:

Bureau of Environmental Engineering and Permitting



BEEP is responsible for the planning, design, and application review of projects that are pursuing funding through the New Jersey Water Bank, as well as for the issuance of Treatment Works Approval (TWA) permits.

- Environmental Review
- Engineering Review
- Treatment Works Approval



MFC:

Bureau of Construction, Payments and Administration



BCPA monitors policies and the integrity of financial and construction partnerships, as well as construction management. BCPA manages the NJEIFP's Clean Water Priority System, Intended Use Plan and Project Priority List. This Bureau is also responsible for the State Revolving Fund applications, annual reporting and the generation of loan exhibits.

- New Jersey Water Bank (NJWB), Pinelands Infrastructure Fund, Sewage Infrastructure Improvement Act Program (SIIAP)
- State Revolving Fund (SRF)
- NJEIFP's Clean Water Priority System, Intended Use Plan, Project Priority List
- Clean Watersheds Needs Survey (CWNS)



DWQ's Impact

We work in every municipality in the State of New Jersey

We regulate facilities that discharge wastewater and generate residuals

Examples:

- Factories
- Schools
- Landfills
- Commercial farms
- Airports
- Power plants
- Local municipalities
- Individual homes

We finance water infrastructure projects

Examples:

- New wastewater treatment plants
- Expansion of existing treatment systems
- Repair of broken systems
- Upgrade of outdated systems
- Stormwater and nonpoint source projects
- Combined sewer overflow project funding





THANK YOU!



NEW JERSEY
DEPARTMENT OF
ENVIRONMENTAL
PROTECTION

WATER RESOURCE MANAGEMENT
Confidential & Deliberative