



***New Jersey Clean Water Council***

***October 11, 2016***

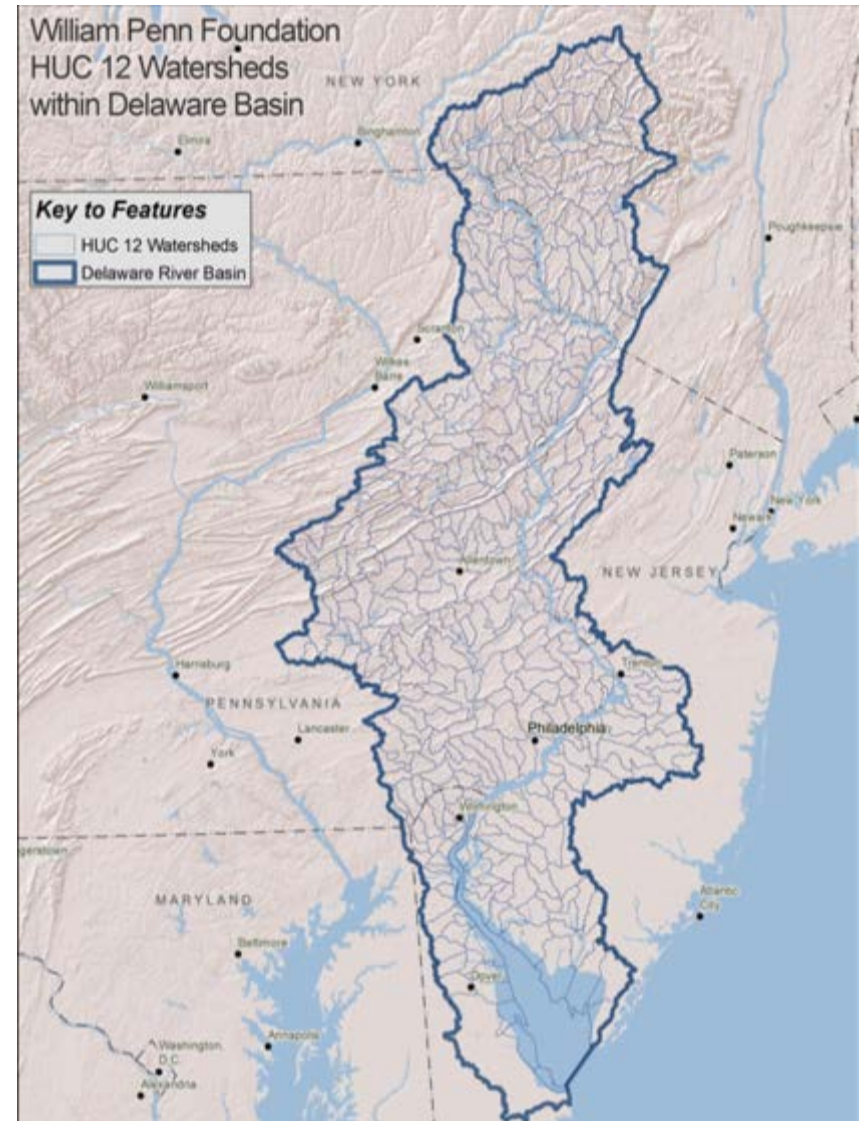
***Andrew Johnson, William Penn Foundation***

***[ajohnson@williampennfoundation.org](mailto:ajohnson@williampennfoundation.org)***

***215-988-1830***

# Delaware River Watershed

- Spans **13,500** sq. miles in 4 states (NY, NJ, PA, DE)
- Provides drinking water for ~ **15M** people
- Enables **\$25B/yr** business
- Supports globally rare species & habitats
- Offers abundant recreation





## **William Penn Foundation Strategies for Watershed Protection** **\$35M/year supporting 3 investment strategies in the Delaware Basin:**

- **Watershed-wide Research, Policy, and Practice**
  - Research, data, advocacy aimed at 4 stressors
- ***Constituency Building: People Outdoors***
  - Messaging and programming aimed at people who actively use a defined network of connected waterside trails, river access points, and environmental centers
- **Protect & Restore Places of Hydrologic Significance**
  - On-the-ground conservation in targeted places

# ***DELAWARE RIVER WATERSHED INITIATIVE:***

## ***Accelerating Conservation, Assessing Impact***

Poconos-  
Kittatinny

Upper Lehigh

Schuylkill  
Highlands

Brandywine-  
Christina

Middle  
Schuylkill

Suburban  
Philadelphia

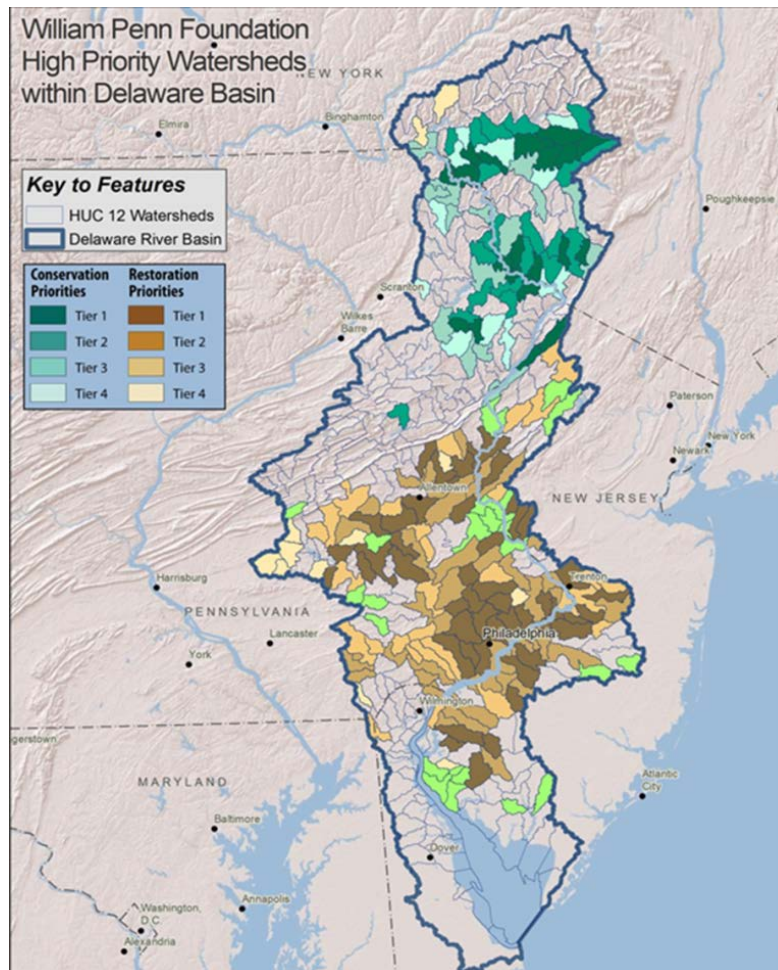
New Jersey  
Highlands

Kirkwood-  
Cohansey



# Target specific watershed stressors:

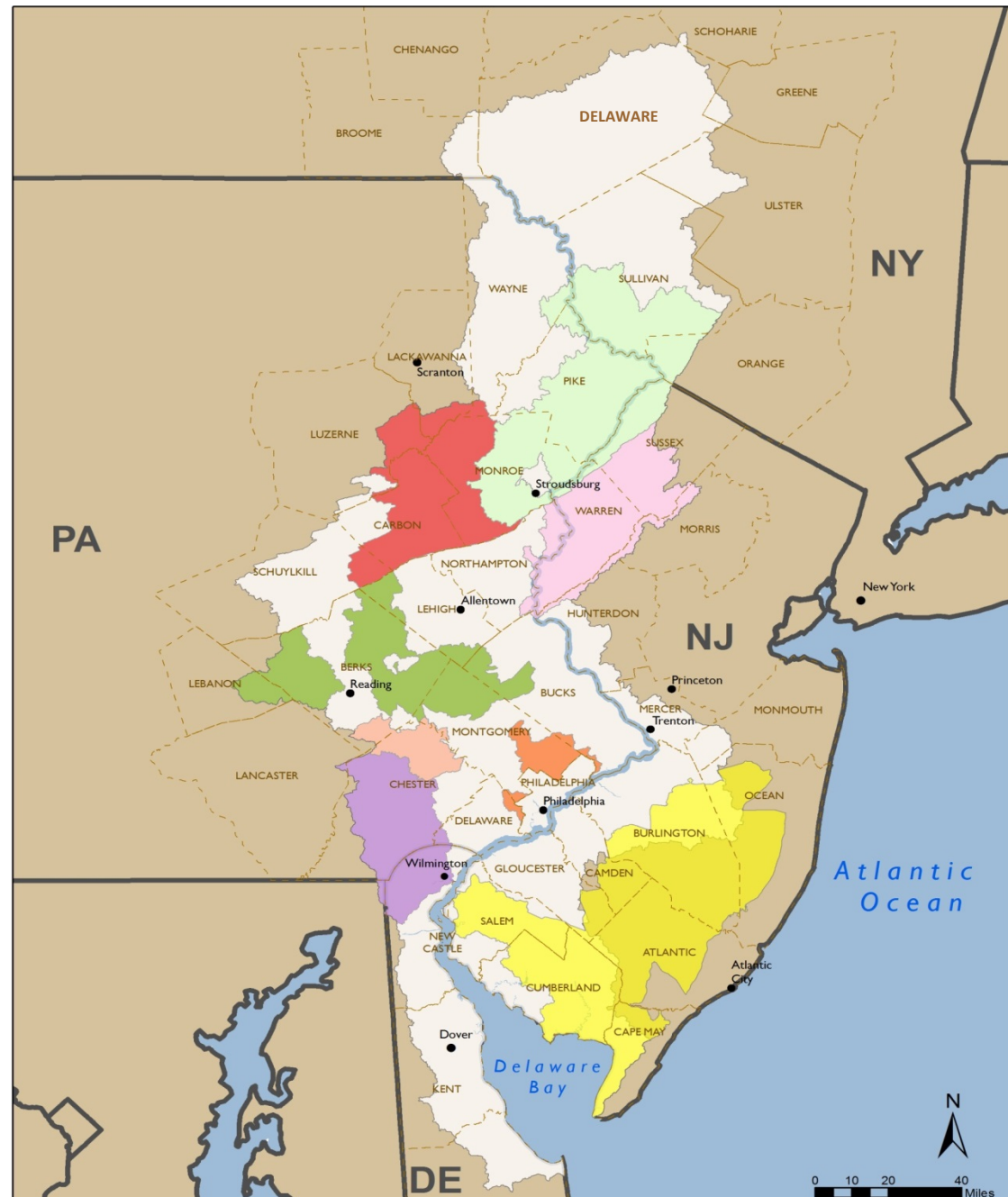
- Headwaters Forest loss/fragmentation
- Stormwater run-off (volume & NPSP)
- Agricultural run-off (NPSP & volume)
- Sustainable aquifer (pollution & depletion)





# Target Specific Geographies:

## - Delaware River Watershed Initiative Clusters





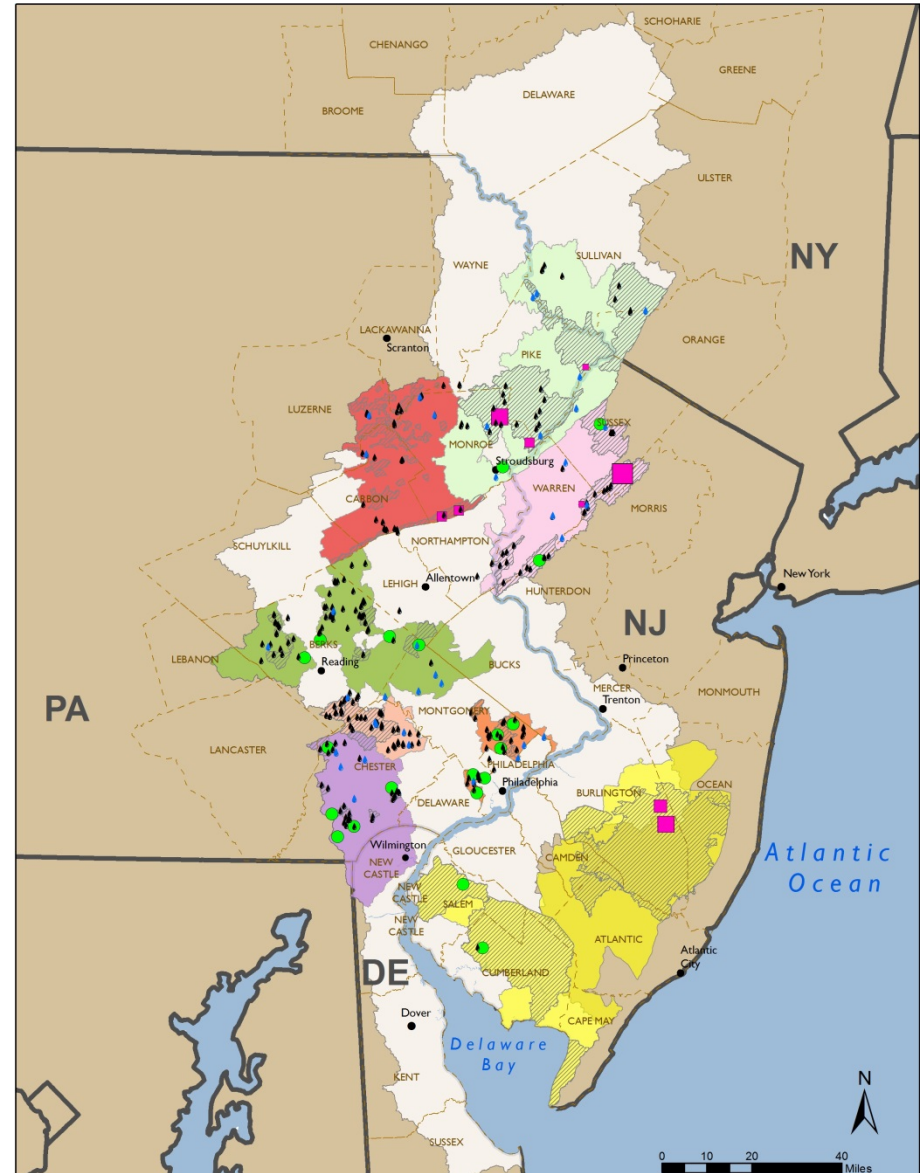
# Align Work in Targeted Places to Accelerate Conservation:

- **Shared restoration and preservation implementation plans** have been developed in each of the 8 sub-watersheds clusters.
  - All of these plans represent aligned work of strong conservation organizations.
  - From 3 to 11 organizations per cluster.
  - All plans were reviewed and vetted by expert panels.
- **46 organizations have \$15MM in operational grants to implement** priority elements of these plans.
- **Two competitive regrant funds** have been capitalized: a **\$10MM land conservation fund** (Open Space Institute) and **\$7MM restoration fund** (National Fish and Wildlife Foundation), exclusively for projects identified in the 8 implementation plans.
  - Both organizations also offer substantial technical assistance
- Institute for Conservation Leadership, has been funded to **convene and facilitate organizations work in each cluster—and across clusters—to insure that they are resourced to collaborate and share lessons learned, to amplify impact.**
- Environmental Leadership Program launching new **Delaware Watershed program aimed at emerging conservation leaders in the 8 sub-watershed clusters**

# Assessing Impact at an Unprecedented Scale

An ambitious, unprecedented, level of **water quality monitoring** is in place by the Academy of Natural Sciences under a \$3.2MM, three-year grant.

- 300 monitoring sites with standardized sampling protocols across the 8 clusters, aligned with project areas to measure impact of restoration and protection work
- Each cluster has a shared monitoring strategy



# Implementation to date...

- \$15MM for operational
  - Supporting over 50 organizations for 3 years
- \$3.2MM for monitoring
  - 300 sampling events and nearly 200 monitoring sites and a report of baseline conditions in the clusters
- \$7MM for restoration
  - Restored 5,676 acres with ag and stormwater BMPs, riparian buffers, and wetland restoration via 30 strategic projects, with \$3.9MM invested from WPF/NFWF and \$10MM leveraged
- \$9MM for protection
  - Protected 14,216 acres via 19 strategic projects, with \$4.5MM invested from WPF/OSI and \$41MM leveraged;
- \$8MM for research, technology, capacity building





# THERE ARE MANY OPPORTUNITIES TO BUILD ON THIS WORK-IN-PROGRESS:

- The Initiative will produce replicable models and create conditions for scaling up within the Delaware Watershed and more broadly
- Other work in the watershed can be connected to the standardized water quality monitoring
- William Penn Foundation support is significant, but a fraction of what is necessary to complete the priority projects identified by the cluster organizations
- Planning for “Phase 2” is underway, informed by a formative evaluation that is in-process and substantial feedback from participants.

