



April 28, 2016

Clean Air Council Hearing

The Clean Power Plan: Impact on New Jersey

Assistant Commissioner John Giordano, Esq.
Air Quality, Energy and Sustainability
NJ Department of Environmental Protection
John.Giordano@dep.nj.gov
(609) 292 - 2795

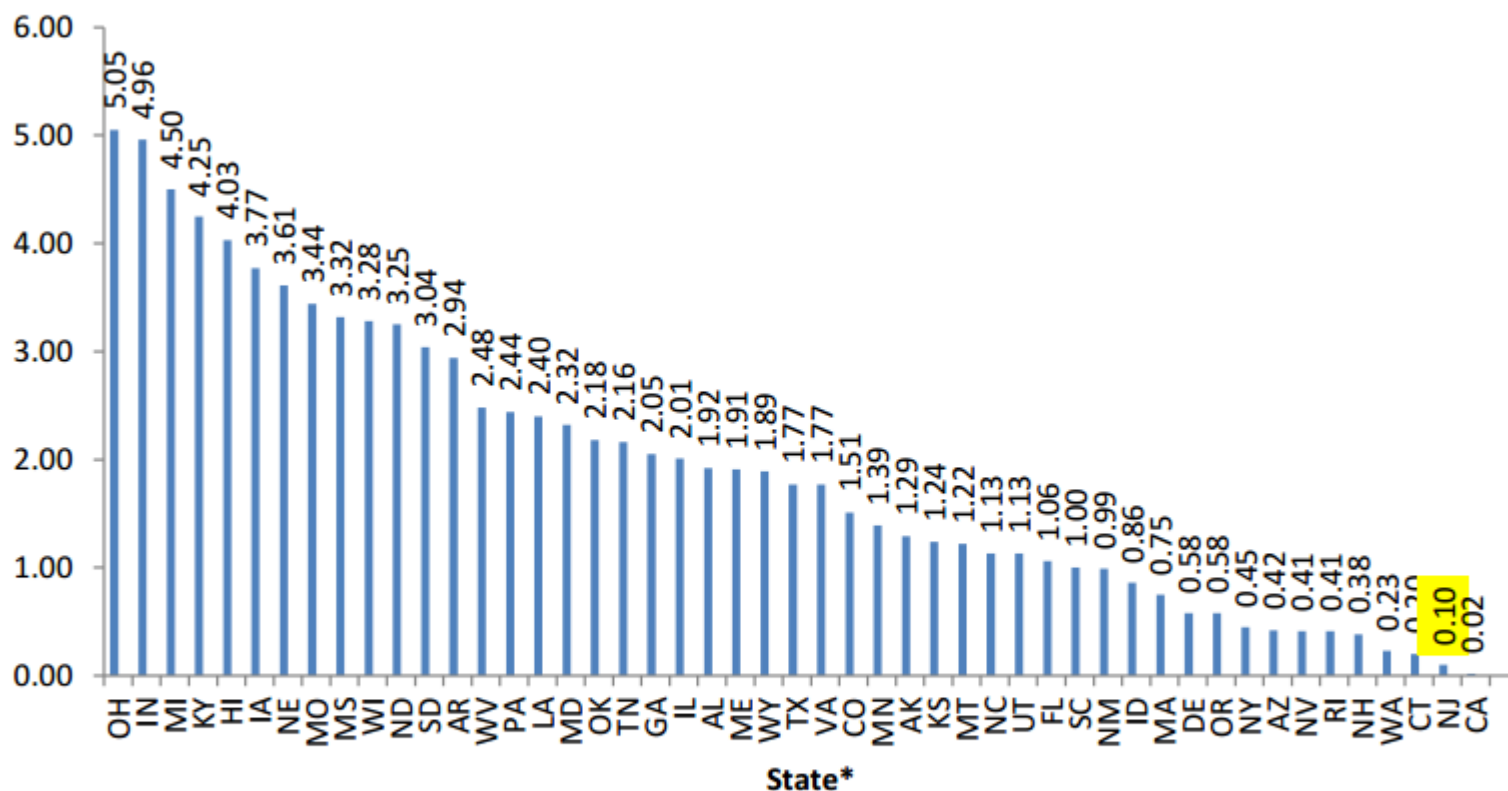
Emission Profile: NJ's Power Sector

New Jersey's power sector has some of the lowest emission rates in the country.

Measured in lbs/MWhr, compared to other states, NJ is:

- 2nd lowest for Sulfur Dioxide
- 5th lowest for Nitrogen Oxides
- 5th lowest for Carbon Dioxide

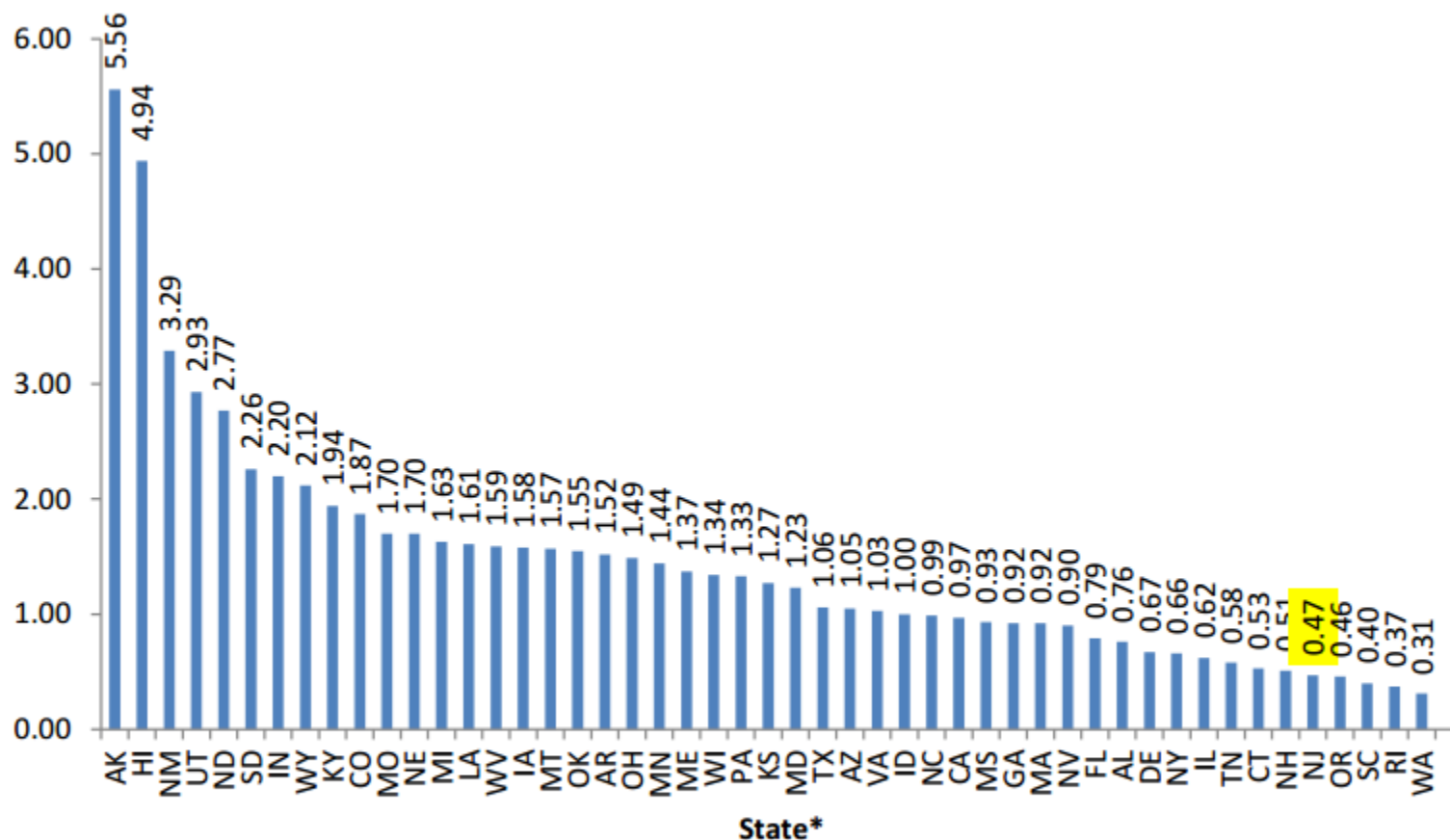
All Sources SO₂ Emission Rate (lb/MWh), 2013



*(Vermont excluded; limited power sector)

Source of Base Data: 2013 EIA State Historical Tables 1991-2013 (www.eia.gov/electricity/data/state); Emission Rate calculated as: (total emissions in Metric Tons/total generation in MWh) X 2,204.6 pounds/metric ton.

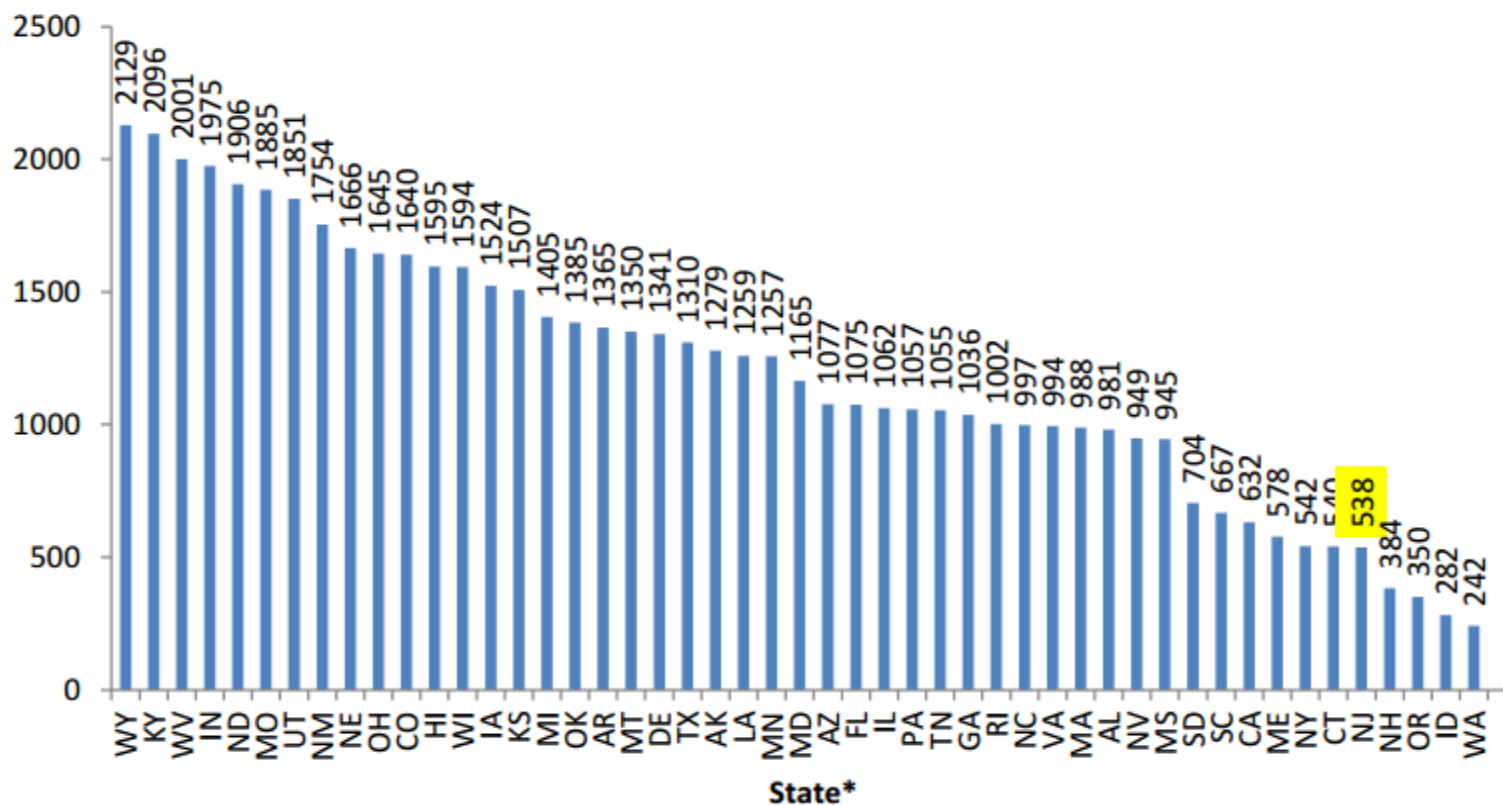
All Sources NOx Emission Rate (lb/MWh), 2013



*(Vermont excluded; limited power sector); Source of Base Data: 2013 EIA State Historical Tables 1991-2013

(www.eia.gov/electricity/data/state); Emission Rate calculated as: (total emissions in Metric Tons/total generation in MWh) X 2,204.6 pounds/metric ton.

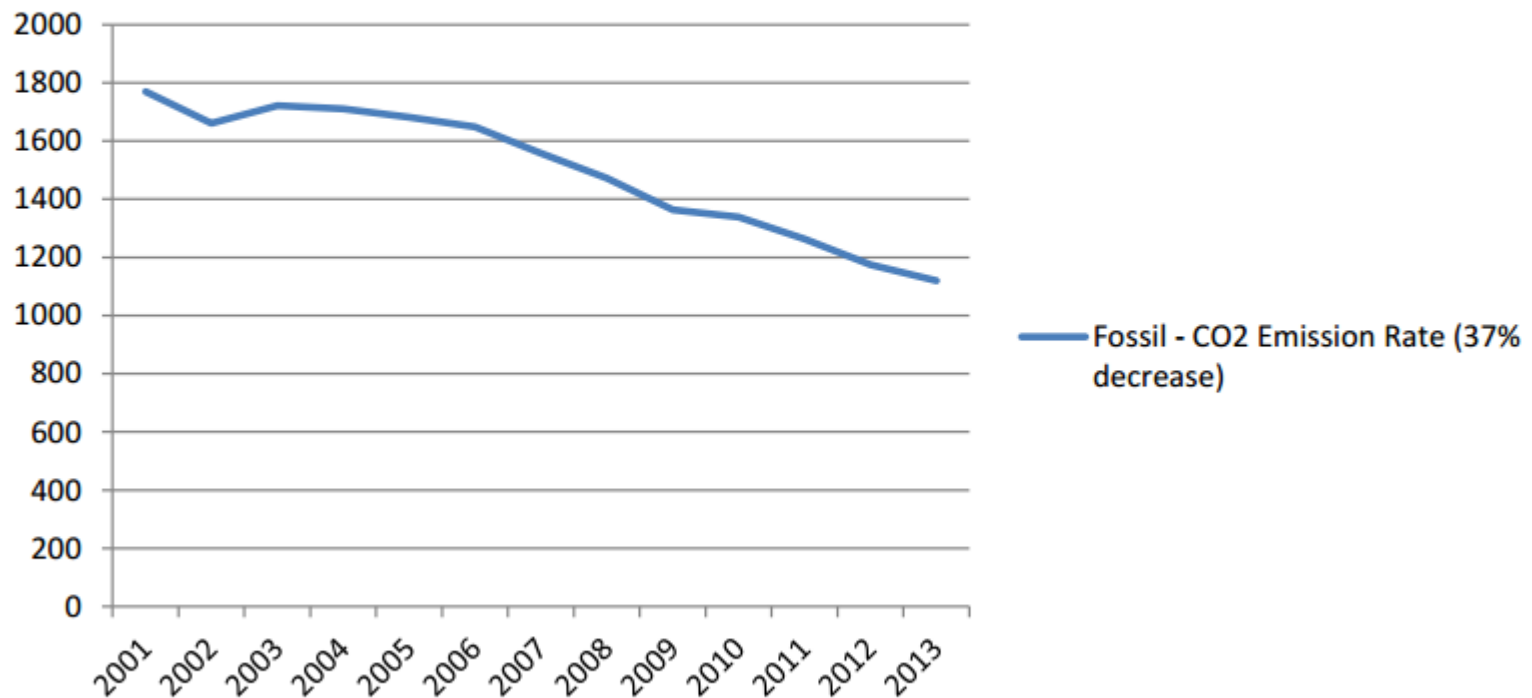
All Sources CO₂ Emission Rate (lb/MWh), 2013



*(Vermont excluded; limited power sector);

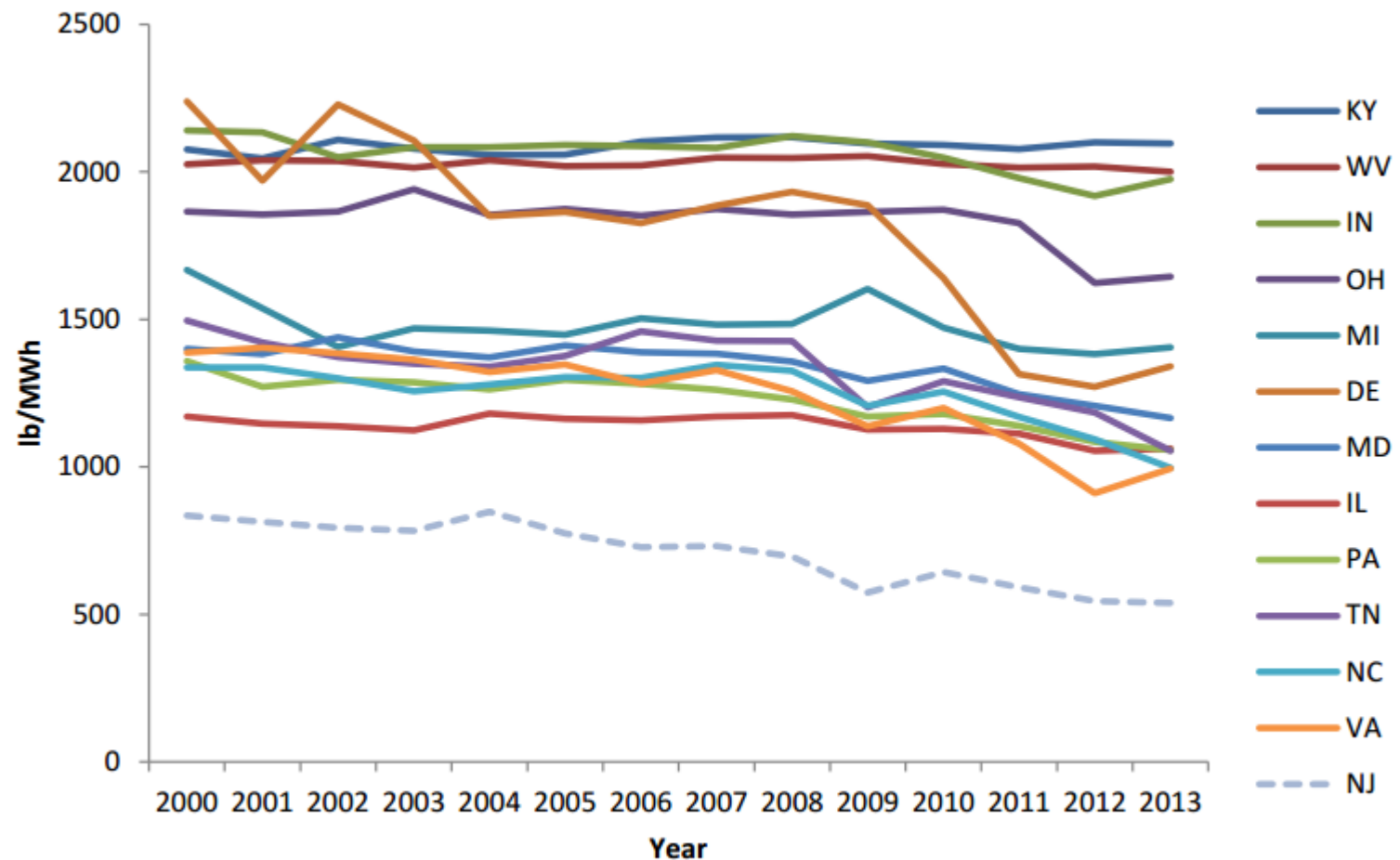
Source of Base Data: 2013 EIA State Historical Tables 1991-2013 (www.eia.gov/electricity/data/state); Emission Rate calculated as: (total emissions in Metric Tons/total generation in MWh) X 2,204.6 pounds/metric ton.

New Jersey Power Generation - *Fossil* CO₂ Emission Rate 2001 - 2013 (lb/MWh)



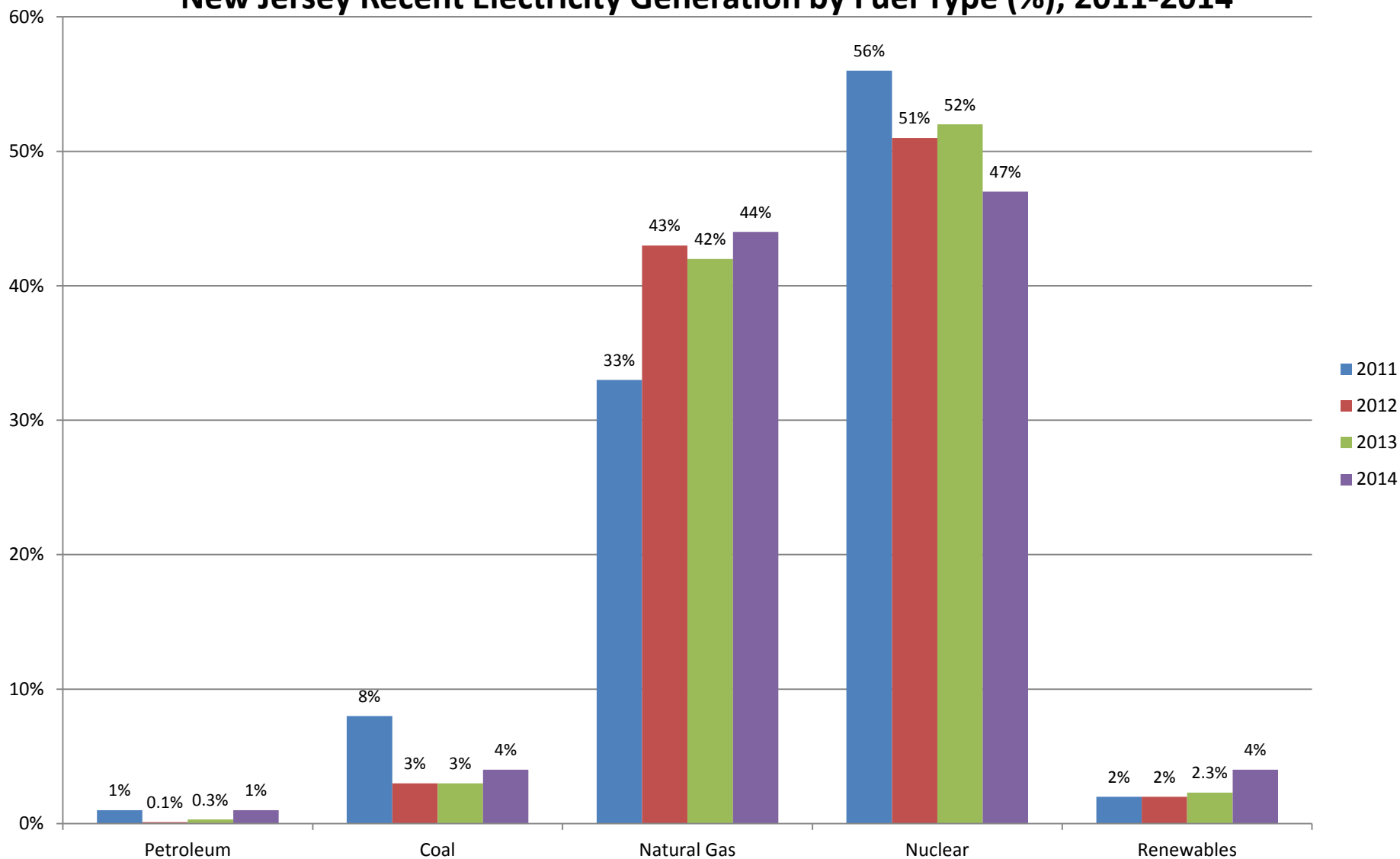
Source of Base Data: 2013 EIA State Historical Tables 1991-2013 (www.eia.gov/electricity/data/state); Emission Rate calculated as: (total emissions in Metric Tons/total generation in MWh) X 2,204.6 pounds/metric ton.

Electricity generation CO₂ emission rate -*all sources* (PJM States)



Source of Base Data: 2013 EIA State Historical Tables 1991-2013 (www.eia.gov/electricity/data/state); Emission Rate calculated as: (total emissions in Metric Tons/total generation in MWh) X 2,204.6 pounds/metric ton.

New Jersey Recent Electricity Generation by Fuel Type (%), 2011-2014



Source of Base Data: EIA State Electricity Profiles – New Jersey