

# Overview of Air Monitoring Website

The screenshot shows the homepage of the New Jersey Department of Environmental Protection's Air Monitoring website. The browser address bar displays <https://dep.nj.gov/airmon/>. The website header includes the DEP logo and navigation links. The main content area features a large blue sky with white clouds background. A text box states: "New Jersey operates 29 air monitoring stations throughout the state, keeping track of the quality of our air. This is part of DEP's commitment to revitalize our communities and protect human health." Below this, there are three main sections: 1. "AirNow Forecast" showing a circular gauge with a green needle pointing to "Good" and a "See forecast" button. 2. "EnviroFlash" with the logo and a "Sign up" button for email alerts. 3. "NJ Air Quality" with a map of New Jersey showing monitoring stations and a "View current air quality" button. A small weather widget is visible in the top right corner of the website.

[www.dep.nj.gov/airmon](https://www.dep.nj.gov/airmon)

# Air Monitoring Website Features

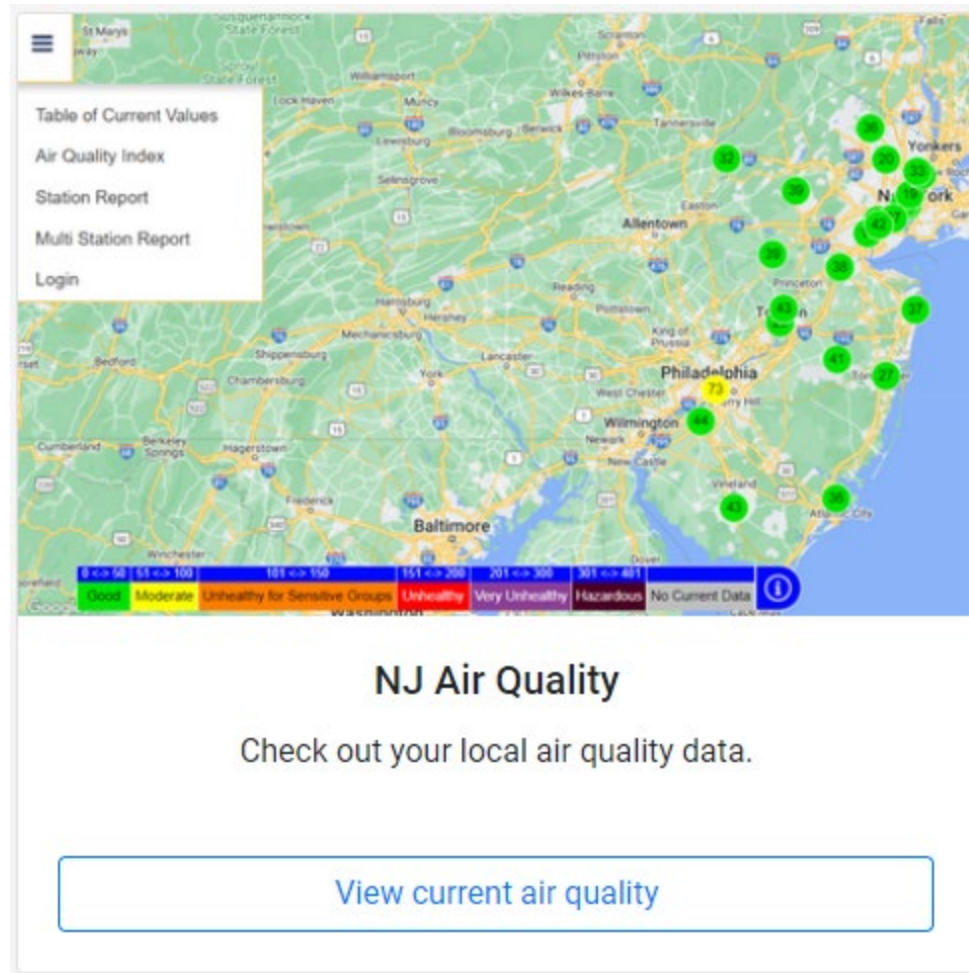
- Current air quality forecast
- Current air quality readings on an AQI color coded map and in tabular format
- Downloadable preliminary data
- Summary annual reports
- Community Science tab

# Current Air Quality Widget and Link to Tomorrow's Forecast

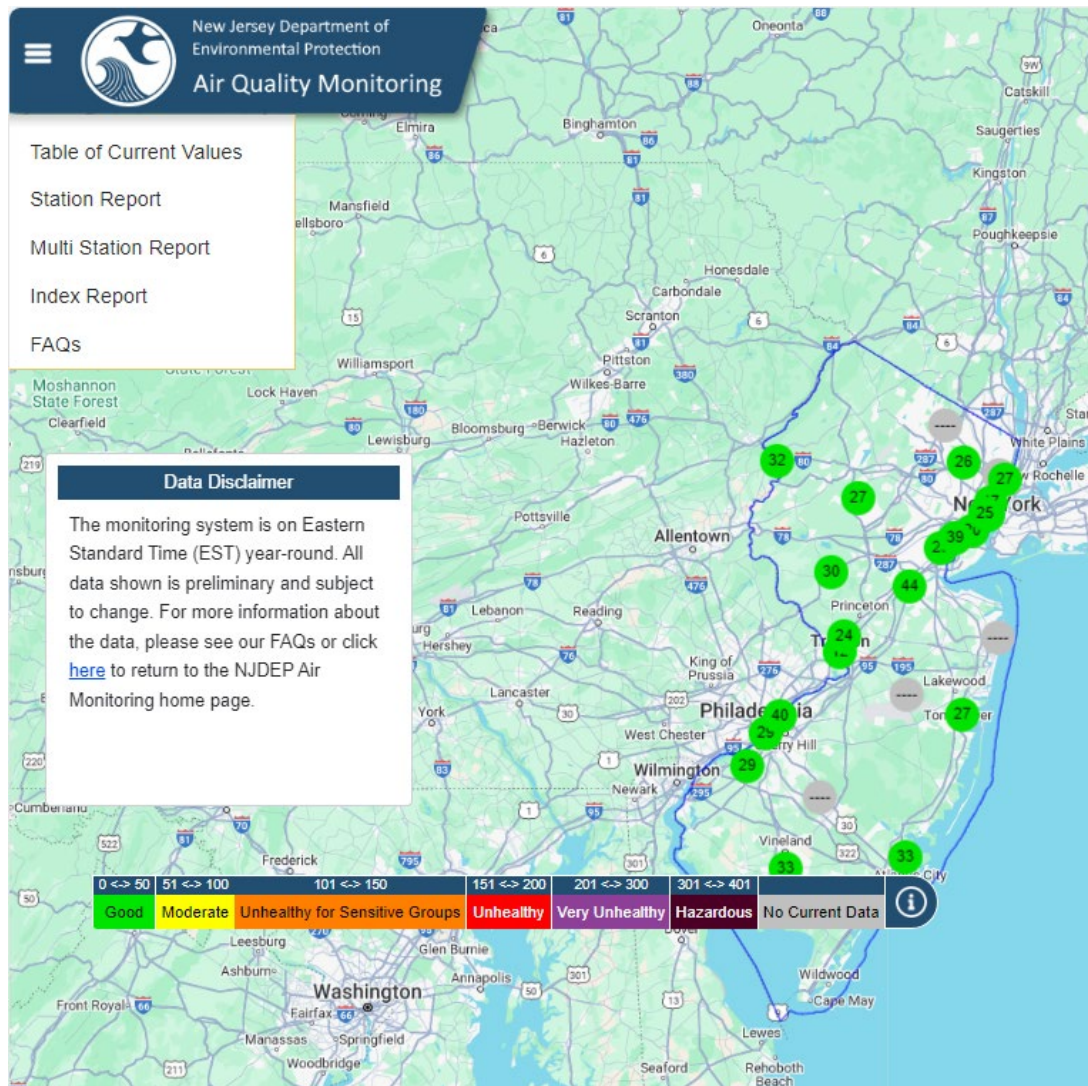


<div> <a href="#">AirNow</a> <a href="#">AQI &amp; Health</a> <a href="#">Fires</a> <a href="#">Maps &amp; Data</a> <a href="#">Education</a> <a href="#">International</a> <a href="#">Resources</a> <a href="#">Recursos en español</a> </div> <div> <a href="#">Get Current and Forecast Air Quality for Your Area</a> <input type="text" value="ZIP Code, City, or State"/> </div>			
<div> <div>New Jersey</div> <div>Pick another state</div> <div>New Jersey</div> <div>Go to Interactive Map</div> </div> <div> <div>Current Air Quality</div> <div>Historical Air Quality</div> </div>			
Reporting Area	Current AQI	Today's Forecast Thursday November 14	Tomorrow's Forecast Friday November 15
<a href="#">Central</a> 4:00 PM EST	<div>44</div> PM2.5 Good	<div>55</div> PM2.5 Moderate	<div>55</div> PM2.5 Moderate
<a href="#">Delaware Water Gap</a> 4:00 PM EST	<div>31</div> PM2.5 Good	<div>75</div> PM2.5 Moderate	<div>50</div> PM2.5 Good
<a href="#">Monmouth County</a> 4:00 PM EST	<div>15</div> PM2.5 Good	<div>45</div> PM2.5 Good	<div>50</div> PM2.5 Good
<a href="#">New Jersey</a> 4:00 PM EST	<div>44</div> PM2.5 Good	<div></div> PM2.5 Moderate	<div></div> PM2.5 Moderate
<a href="#">North Central</a> 4:00 PM EST	<div>29</div> PM2.5 Good	<div>75</div> PM2.5 Moderate	<div>55</div> PM2.5 Moderate
<a href="#">Northeast Urban</a> 4:00 PM EST	<div>38</div> PM2.5 Good	<div>55</div> PM2.5 Moderate	<div>55</div> PM2.5 Moderate

# Current Air Quality Map and Table



# Current Air Quality Map





# Table of Current Values

Station Name	Time	O3 ppm	SO2 ppm	NO2 ppm	PM2.5 µg/m3	CO ppm	WDIR Deg	WSPD mph
Ancora	11/14/2024 16:00							
Atlantic City PM	11/14/2024 16:00				0.1			
Bayonne	11/14/2024 16:00	0.018	0.001	0.021			63	3.8
Brigantine	11/14/2024 16:00	0.036	0		3.3			
Chester	11/14/2024 16:00	0.026	0	0.01				
Clarksboro	11/14/2024 16:00				5.4			
Colliers Mills	11/6/2024 09:00	0.037						
Columbia	11/14/2024 16:00	0.015	0	0.021	7.6		248	1.4
Elizabeth Trailer	11/14/2024 16:00		0.001		7.4	0.4	76	2.8
Flemington	11/14/2024 16:00	0.005			5.1		116	1.2
Ft Lee Near Road	11/14/2024 16:00			0.02	5.8	0.3	104	2.1
Jersey City	11/14/2024 16:00		0	0.027		0.4		
Jersey City Firehouse	11/14/2024 16:00				0.4			
Leonia	11/7/2024 10:00	0.029						
Millville	11/14/2024 16:00	0.037		0.004	6.4			
Monmouth University	11/6/2024 12:00	0.036						
Paterson	11/14/2024 16:00				2.3			
Pennsauken PM	11/14/2024 16:00				7.6			
Rahway	11/14/2024 16:00				2.8			
Ramapo	11/6/2024 12:00							
Rider University	11/14/2024 16:00	0.025			3.2			
Rutgers University	11/14/2024 16:00	0.015		0.022	7.8			
South Camden	11/14/2024 16:00	0.029		0.01	4.9	0.2	77	3.2
Toms River	11/14/2024 16:00				0.6			
Trenton	11/14/2024 16:00				4.7			
Union City HS	11/14/2024 16:00				2			

# Preliminary data

## Download Air Quality Data

at the end of each calendar quarter, submits that data to the U.S. Environmental  
data available on our DEP website has not yet been reviewed.

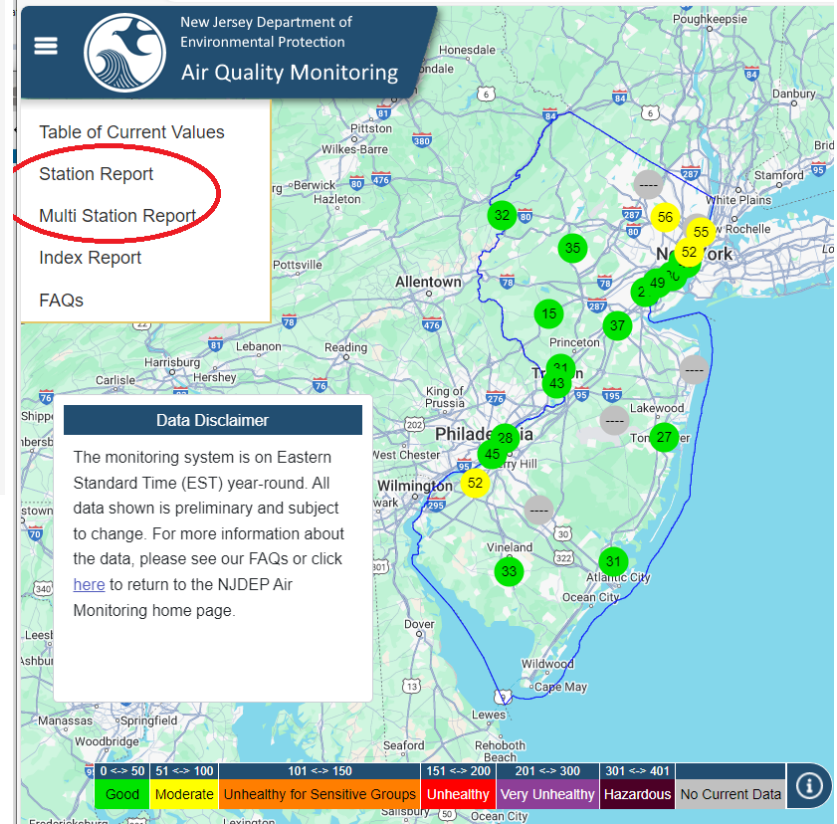


Preliminary Air Quality Data

## Preliminary Air Quality Data

- Use multiple stations or single station forms to see the latest hourly readings.
- The monitoring system is on **Eastern Standard Time (EST)** year-round.
- If you are viewing it during Eastern Daylight Savings Time (EDST), the data will appear to lag by 1 hour. For example, 2:00 EDST is 1:00 EST.
- **The following ozone monitoring stations operating only during ozone season (March 1 through October 31):**
  - Ancora, Clarksboro, Colliers Mills, Leonia, Monmouth University, Ramapo

Launch Preliminary Air Quality Data Report



# Station Report Request Screen

Station Report

Select Purpose:  
AIR QUALITY

Select County:  
All

Select Owner:  
NJ APD

Select Station:  
☒ Show Only Active Stations  
Ancora

Select Monitors:  
☒ All Monitors  
☒ O3

Select Report View  
Table Graph Excel

Select Period:  
Daily Yesterday Weekly  
Monthly Yearly Custom

From Date 11/15/2024  
From Time 00:00  
To Date 11/15/2024  
To Time 23:00

Type Average  
Station Time Base Hourly  
to  
Averaging Period Hourly

Display

Cancel



# Downloadable Station Report

Station Report										
< 11/14/2024 >										
Station Name: Bayonne, Type: Average, Time Base: Hourly, Date: 11/14/2024										
Date Time	Bayonne									
	SO2	O3	NO2	NO	NOx	WSPD	WDIR	TEMP	RH	BP
	ppm	ppm	ppm	ppm	ppm	mph	Deg	DegF	%	in Hg
00:00 11/14/2024	0.001	0.006	0.028	0.001	0.029	4.7	75	40	51.5	30.39
01:00 11/14/2024	0.001	0.004	0.031	0.001	0.033	4.3	83	39	50	30.36
02:00 11/14/2024	0.001	<Samp	0.035	0.003	0.038	3.6	68	39	52.2	30.36
03:00 11/14/2024	0	0.002	0.034	0.004	0.038	4.1	73	38	52.2	30.35
04:00 11/14/2024	0	0.004	0.032	0.002	0.034	6	77	38	48.5	30.34
05:00 11/14/2024	0	0.005	0.031	0.003	0.034	6.1	62	38	50.1	30.34
06:00 11/14/2024	0.001	0.003	0.036	0.012	0.048	6.9	48	37	51.4	30.35
07:00 11/14/2024	0.001	0.009	0.028	0.009	0.037	9.3	69	38	52.2	30.35
08:00 11/14/2024	0.001	0.012	0.026	0.019	0.045	7.6	65	39	49.8	30.33
09:00 11/14/2024	0.001	0.019	0.019	0.011	0.031	5	66	43	47.7	30.3
10:00 11/14/2024	0.001	0.022	0.017	0.008	0.025	5.5	53	44	46.4	30.28
11:00 11/14/2024	0	0.024	0.015	0.005	0.02	4.9	67	44	44.8	30.25
12:00 11/14/2024	0	0.026	0.013	0.004	0.017	2.4	210	45	40.0	30.22

# Annual Air Quality Reports



Department of Environmental Protection

## Air Monitoring

Home

Data ▾

What, How, & Where DEP Monitors ▾

Visibility Cameras ▾

Network ▾

### Trends

Criteria Pollutants Trends  
Air Toxics Trends



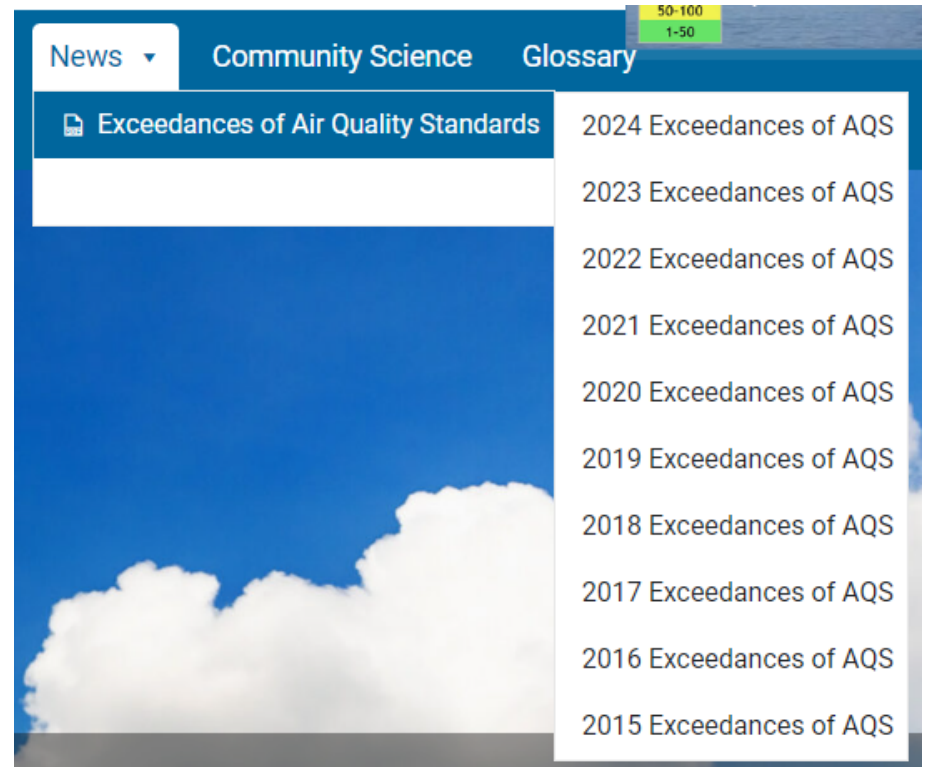
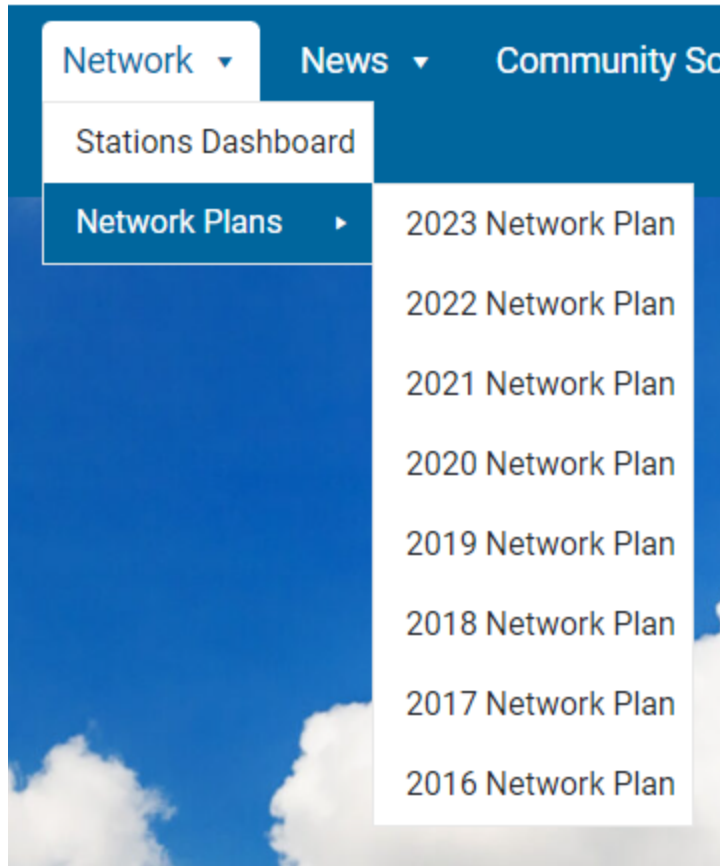
### Annual Reports

2022 Air Quality Report  
2021 Air Quality Report  
2020 Air Quality Report  
2019 Air Quality Report  
2018 Air Quality Report  
2017 Air Quality Report  
2016 Air Quality Report  
2015 Air Quality Report  
2014 Air Quality Report  
2013 Air Quality Report  
2012 Air Quality Report  
2011 Air Quality Report  
2010 Air Quality Report  
Annual Air Quality Reports Archive (1997 – 2009)

### Data Download

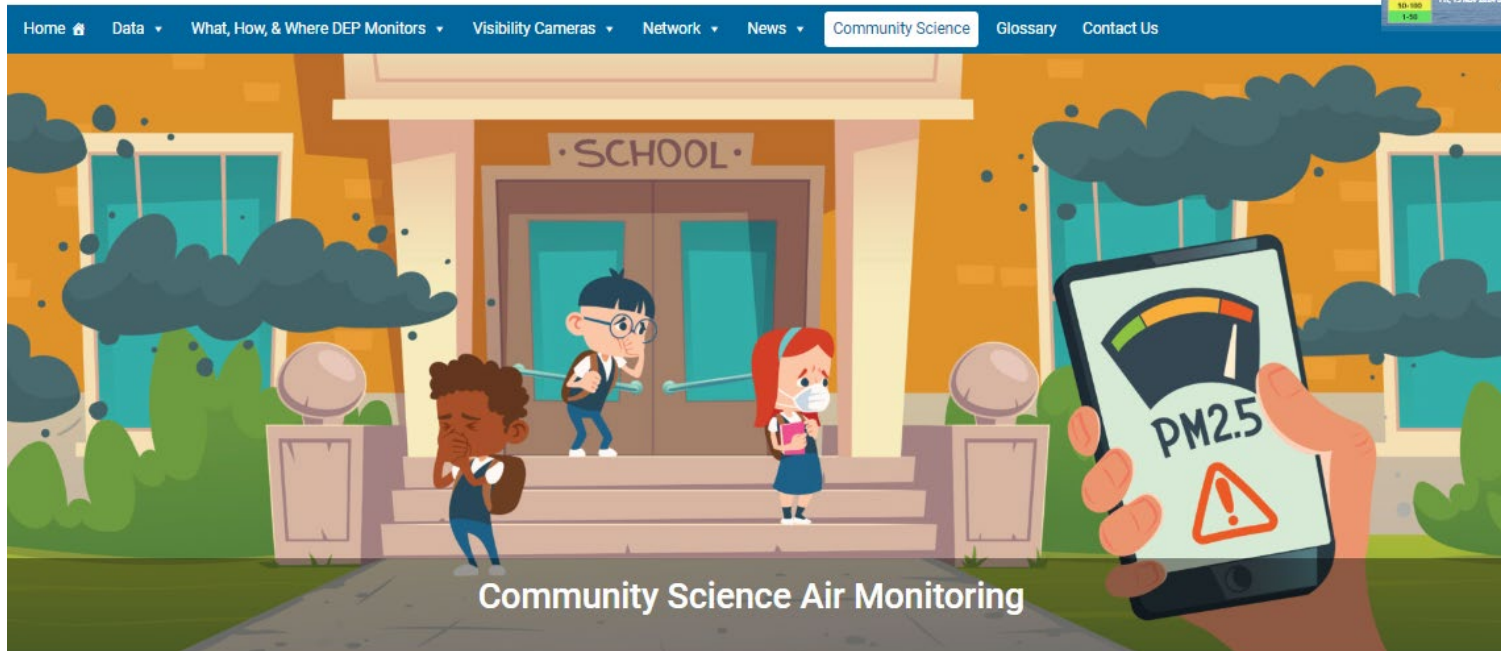
Reviewed Air Quality Data  
Preliminary Air Quality Data

# Annual Network Plans and Annual Exceedances



# Community Science Page

## Air Monitoring



[Home](#) / [Community Science](#)

DEP monitors air pollution throughout New Jersey to protect public health and the environment

Communities can now also monitor their own air quality, using portable and relatively affordable instruments. These “low-cost sensors” range in price from a few hundred to a few thousand dollars.

Use a low-cost sensor to:

- Learn more about air pollution
- Find local sources of pollution
- Monitor hotspots
- Collect data for your own research

# Other Features

- Locations of stations
- Link to Brigantine visibility camera
- Long-term trend charts
- Glossary of terms
- PurpleAir SD card data processing app