

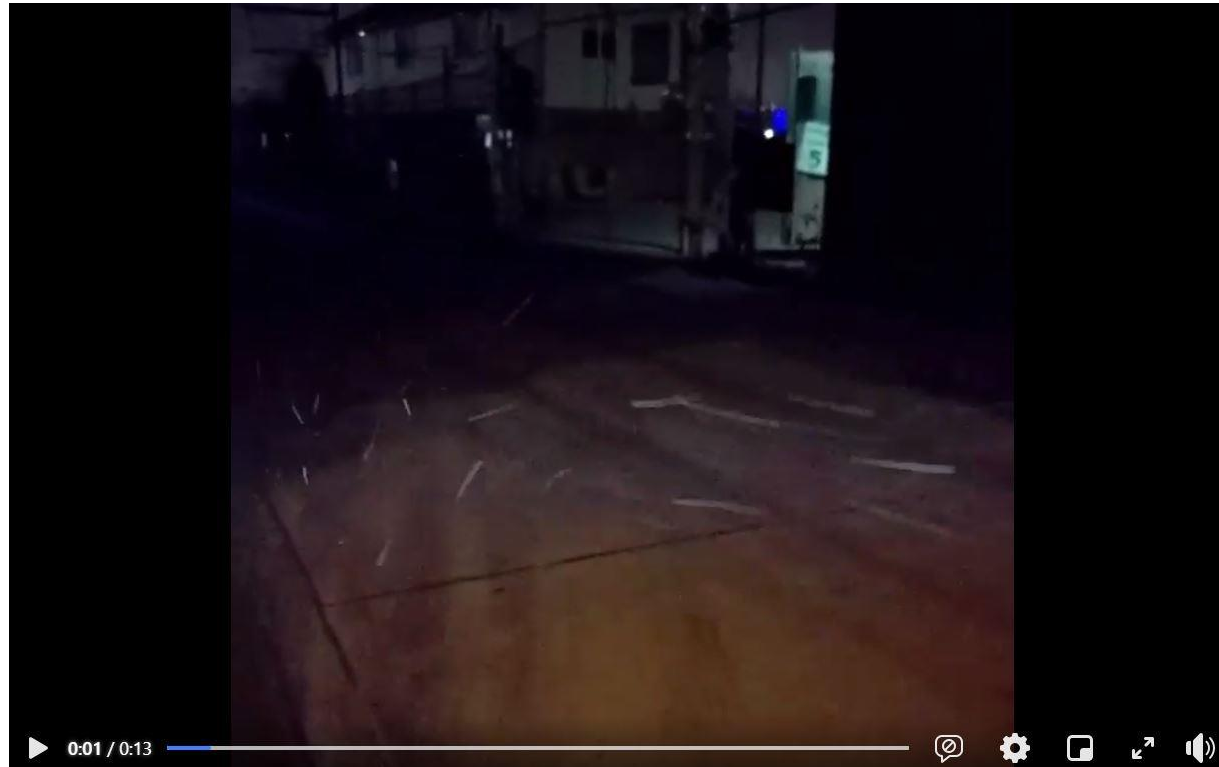
Fugitive Dust in Waterfront South, Camden

Mike Morgan

Britani Nestel Morgan

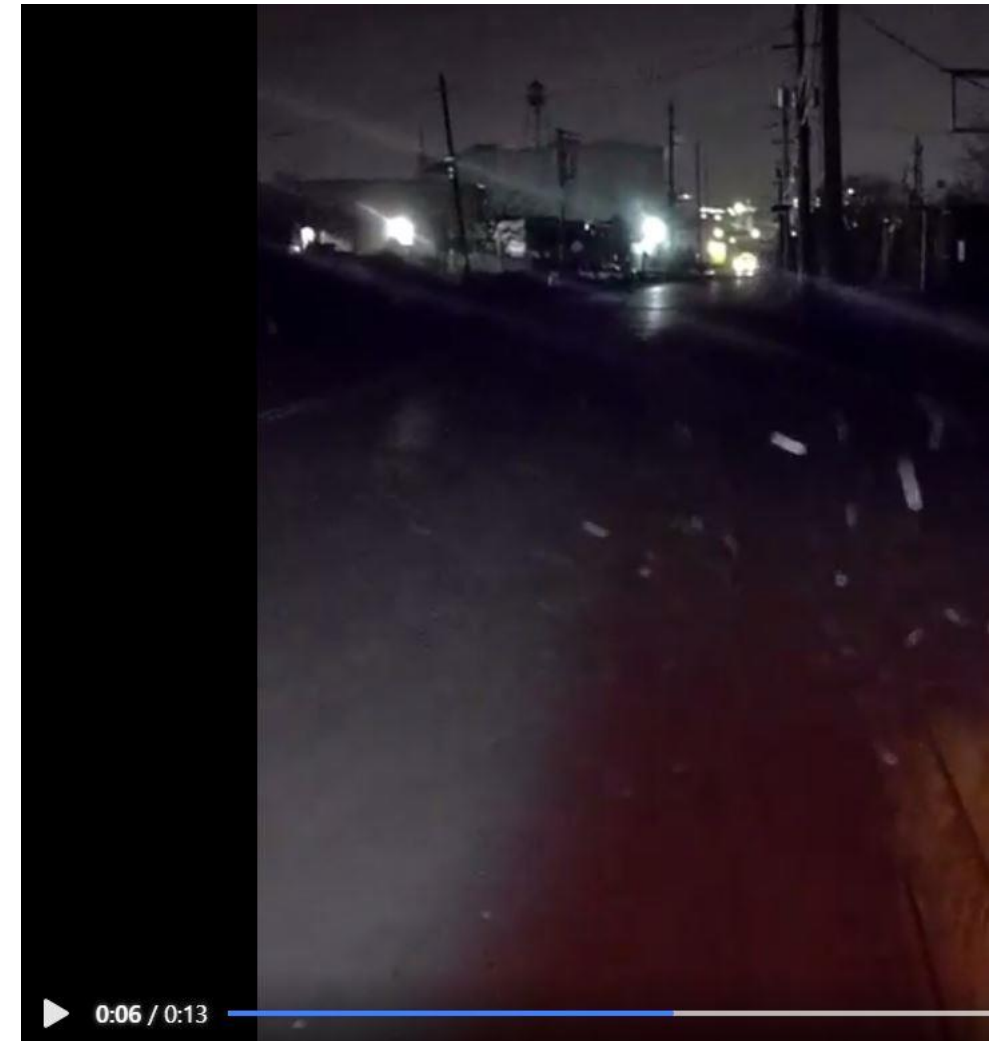


Testimony of fugitive dust

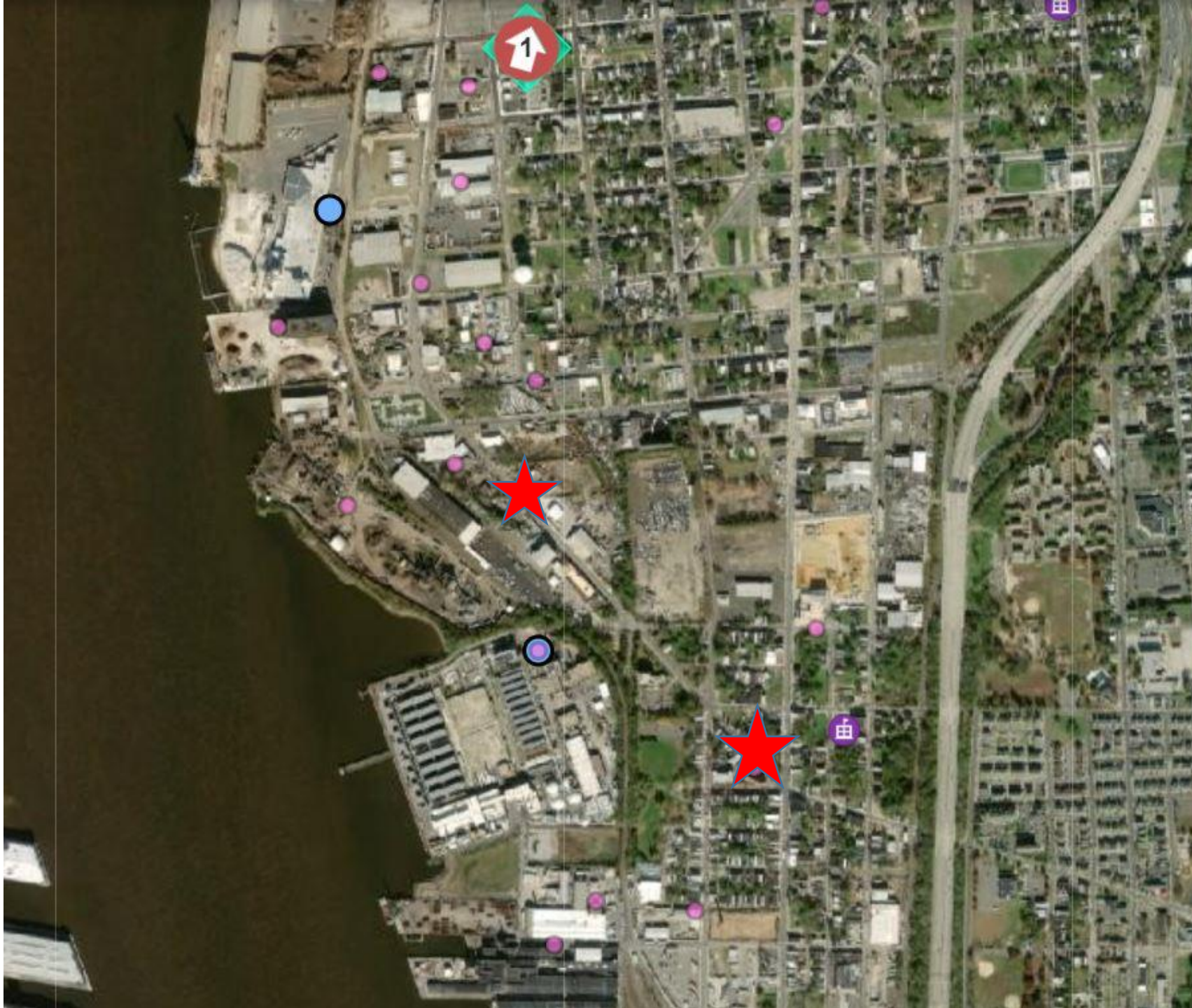


“The pollution was exceptionally bad tonight. As soon as I turned onto 2nd St. the dust in my eyes was so bad it had me flinching and struggling to keep my eyes on the road. I looked at the sky and there were only small clouds spread out far apart. Mostly clear sky, so it definitely isn't snow. It was spread as far as 2nd by BB&T Pavilion all the way to Broadway and Ferry Ave.”

Testimony of fugitive dust



“Air pollution on my street when I’m trying to get to work. It was scary thick this morning and it was hard to get something over my mouth to breathe through because I was bundled up. I could feel it hitting my eyeballs. The air smelled like burning metal.”



Recommendations

1. Reinstate DEP monitoring station at CCMUA, a location closer to Waterfront South that could more accurately monitor air quality
2. When a neighborhood industry is fined by NJDEP, allocate this money toward a local Supplemental Environmental Project (SEP) in coordination with neighborhood agencies
3. Support local citizen science through funding and knowledge to increase available data on local air quality issues