



***New Jersey Clean Air
Council Annual Hearing -
Past, Present and Future:
Air Quality Around Our
Ports and Airports***

***Virtual Hearing
July 30, 2020***



Environmental Justice, Cumulative Impacts and Ports

Nicky Sheats, Esq., Ph.D.

*Director, Center for the Urban Environment,
John S. Watson Institute for Public Policy of
Thomas Edison State University and member
of the NJ Environmental Justice Alliance*

Game Plan



- **Cumulative impacts in the context of current events;**
- **Cumulative impacts in the context of environmental justice (EJ) and the Ports;**
- **Cumulative impacts in the context of EJ, the Ports and climate change;**
- **Some policy suggestions.**



Cumulative Impacts:

Risks and impacts caused by multiple pollutants, usually emitted by multiple sources of pollution in a neighborhood, in isolation and by their interaction with each other and with social vulnerabilities.

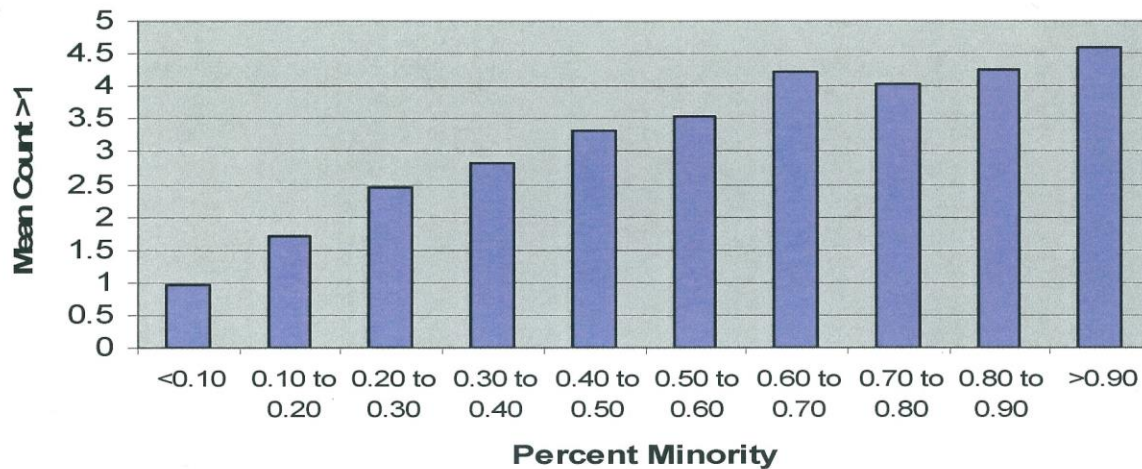


Problem:



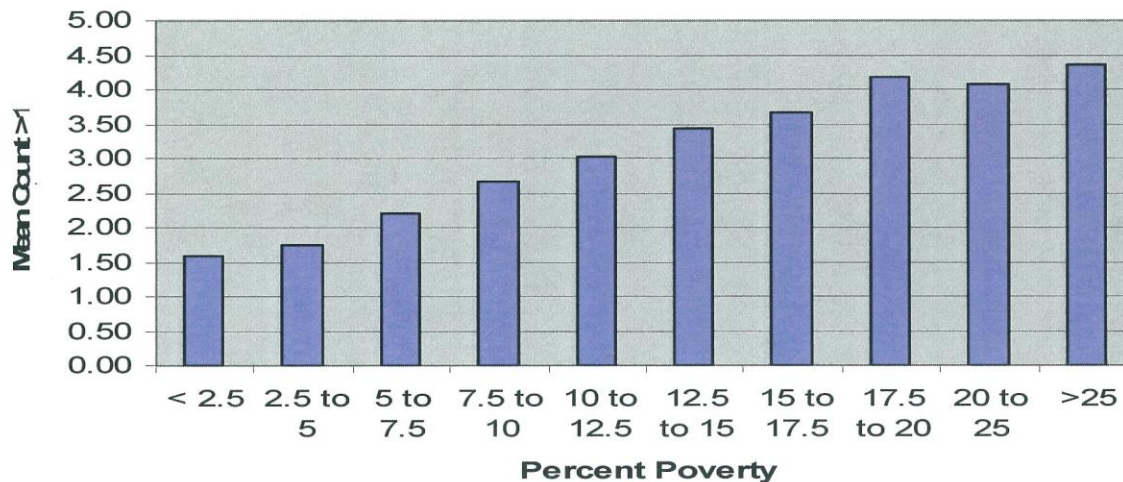
- **We attempt to regulate pollutant by pollutant through individual standards.**
- **But there can be detrimental health effects even if no individual standard is violated.**

Figure 1: Relationship Between Cumulative Impact and Percent Minority



- Grouped all block groups based on percent minority and poverty
- Calculated average cumulative impact score for combined groups
- Cumulative impact scores increase steadily with increasing percent minority and poverty

Figure 2: Relationship Between Cumulative Impact and Poverty





A Preliminary Screening Method to Estimate Cumulative Environmental Impact

**Presentation by the New Jersey Department of Environmental Protection
to the Environmental Justice Advisory Council**

December 2, 2009

Indicators:



- NATA diesel (1999)
- NATA cancer risk
- NJDEP benzene estimates
- Traffic (all)
- Traffic (trucks)
- Density of major regulated sites
- Density of known contaminated sites
- Density of dry cleaners
- Density of junkyards

Cumulative Impacts



In the Context of COVID-19 and Black Lives Matter

- Pollution;
- Race.

Cumulative Impacts



In the Context of EJ and the Ports:

- **Truck Traffic;**
- **Local Communities;**
- **Public Health.**

Coalition for Healthy Ports: coalition of environmental justice, environmental, faith-based and labor organizations that attempts to eliminate and reduce Ports related pollution.

Cumulative Impacts



In the Context of EJ, the Ports and climate change:

- **Truck Traffic;**
- **Black Carbon;**
- **Public Health;**
- **Climate Change.**

Remember mandatory emissions reductions and look out for the Transportation and Climate Initiative (TCI).

California Measures That Could Benefit New Jersey



- **Currently requires drayage trucks to have diesel engines built in 2007 or later. Beginning January 1, 2023 will require 2010 or later model year diesel engines. (As of August 1, 2020 the NY/NJ Ports will require trucks to have engines built no earlier than 1998 and newly registered trucks must have model year engines in 2007 or later)**
- **Any “container vessel, passenger vessel, or refrigerated cargo vessel at berth in a port must limit the use of auxiliary diesel power, connect to on-shore power or use equivalent alternative pollution control technology;**

California Measures That Could Benefit New Jersey



- **Performance standards for cargo handling equipment (would be stricter than NY/NJ Ports current voluntary standards);**
- **Carb 2009 emission standards for spark-ignition marine engines ;**
- **Carb 2011 emissions standards for commercial harbor craft;**

Indirect Source Review and Source of Information



ISR: Indirect Source Review involves regulating facilities that attract vehicles but do not themselves pollute.

Source of Information: Memorandum by Jonathan Smith, Esq. and Jasmine Jennings, Esq. of Earthjustice (and Sustainable Systems Research)



Color Scheme

END



Nicky Sheats, Esq., Ph.D.
609-777-4351 ext. 4280
nsheats@tesc.edu