



Registration and Reporting for Refrigeration Systems

N.J.A.C. 7:27-E-2

HFC Rule Applicability + Approach

Applicability

Facilities that install or operate:

- A least 1 refrigeration system
- System has a full charge of 50 lbs or more of a high-GWP refrigerant

Types of equipment covered:

- Chillers
- Commercial refrigeration
- Industrial process refrigeration

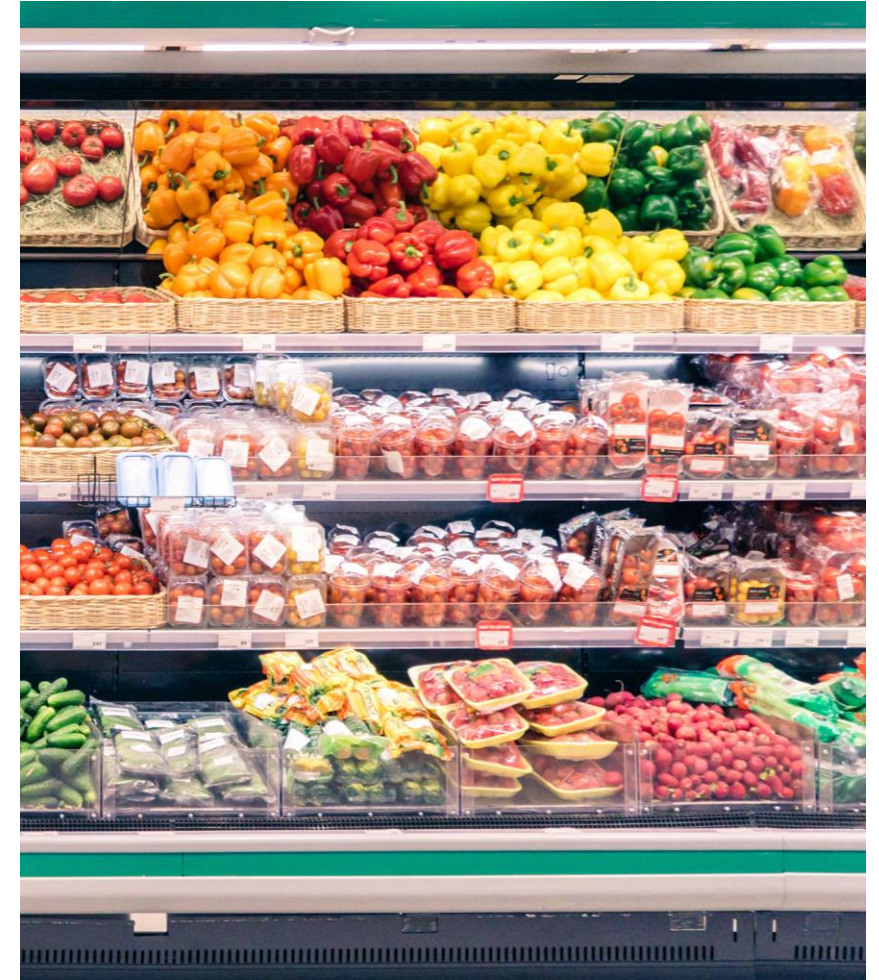
Facilities must report

High-GWP refrigerants:

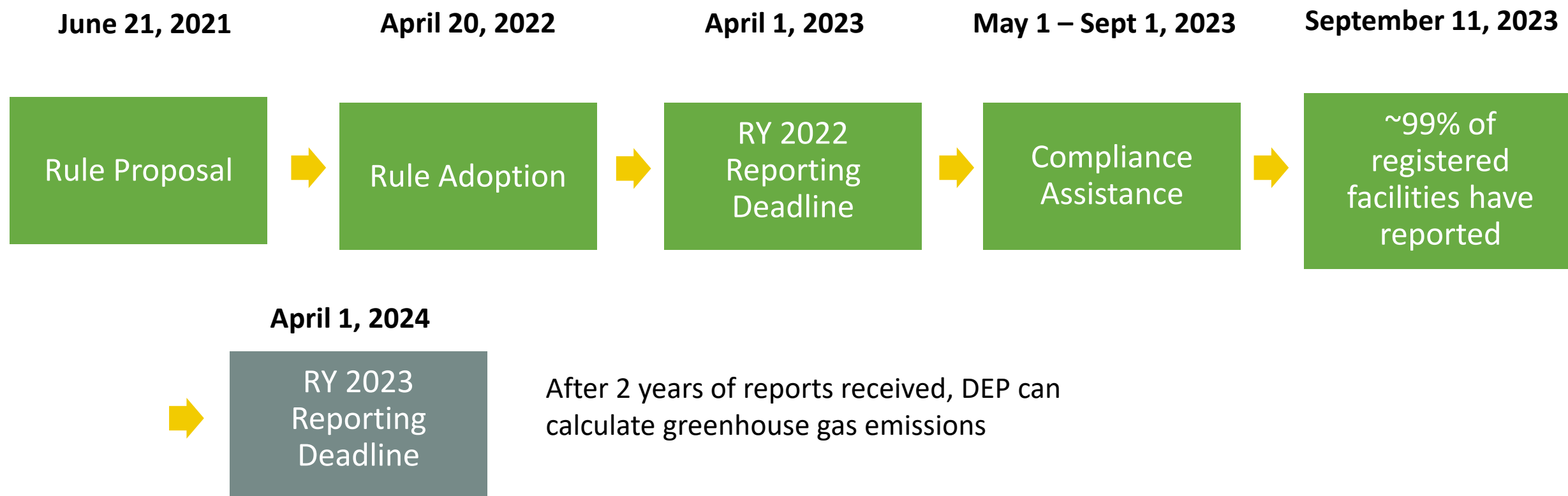
- Types used
- Quantities purchased
- Amounts charged into system
- Amounts recovered, stored, or shipped to be reclaimed or destroyed

Refrigeration equipment type:

- Manufacturer
- Description/model, model year
- Temperature classification
- Full charge



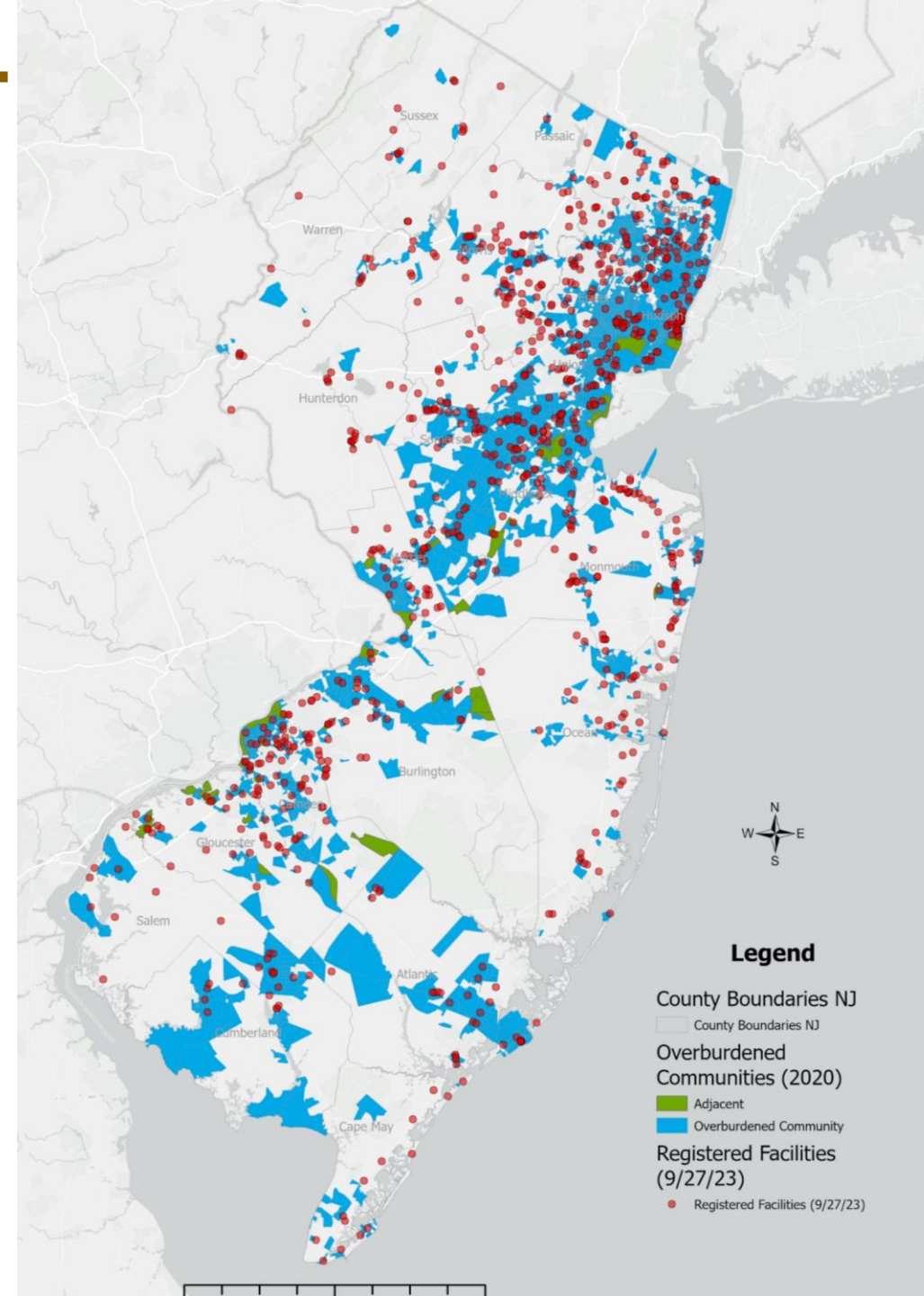
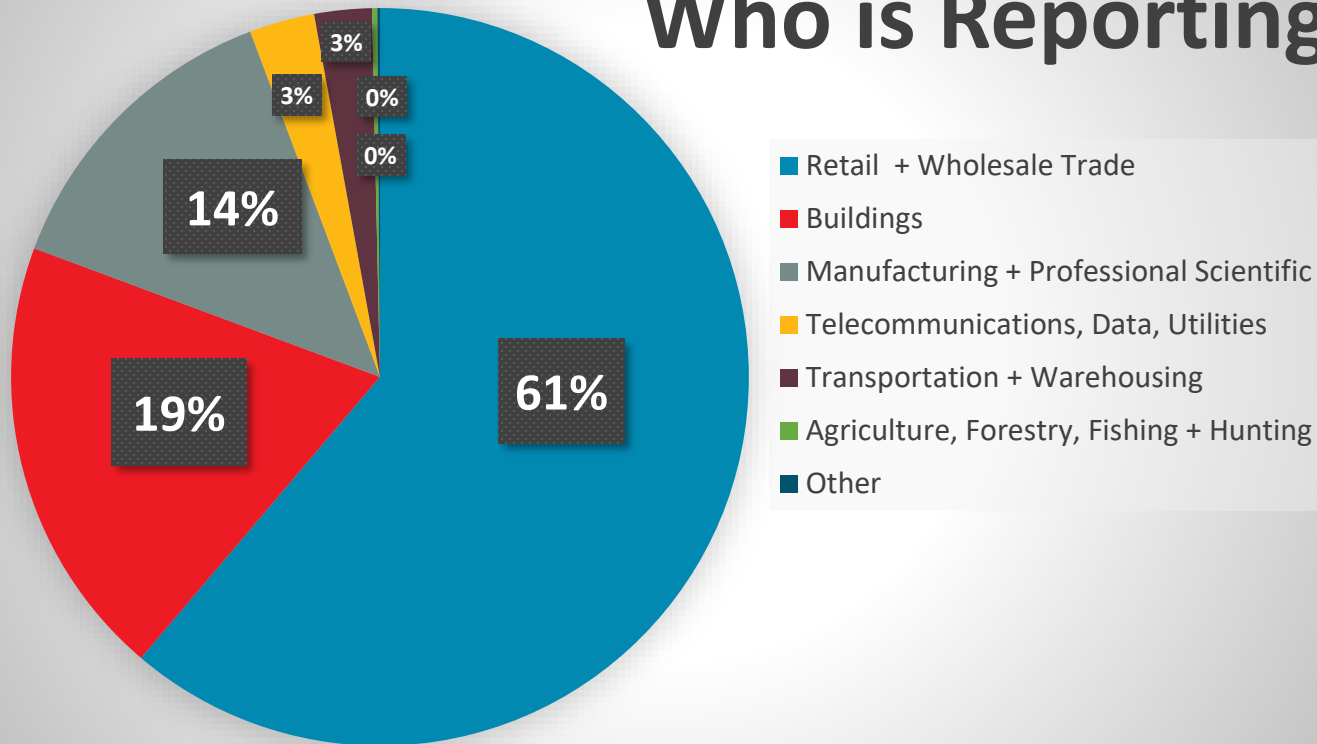
HFC Timeline of Actions to Date



Data Summary

- An estimated 1,000 regulated facilities are located in New Jersey.
- 943 facilities currently reporting with 4,440 systems across the state

Who is Reporting



Data Summary

Top 5 Refrigerants	Global Warming Potential	Count of Facilities	Metric Tons of CO2-eq
R-404A	3,920	309	1,140,193
R-22	1,810	181	623,106
R-134a	1,430	183	629,187
R-407A	2,110	528	545,684
R-507	3,990	55	432,284

Very preliminary data from 2022 shows:
Over 4 million metric tons of CO2-equivalent in use at the reporting facilities

Contact

Ky Asral

Chief

Bureau of Sustainability



Ky.Asral@dep.nj.gov



609-633-0631