



State of New Jersey

DEPARTMENT OF ENVIRONMENTAL PROTECTION

P.O. Box 402

401 EAST STATE STREET

TRENTON, NJ 08625-0402

CHRIS CHRISTIE
Governor

BOB MARTIN
Commissioner

KIM GUADAGNO
Lt. Governor

ADMINISTRATIVE ORDER NO. 2014-01

In accordance with N.J.S.A. 58:24-1, the Department has inspected places within the jurisdiction of the State from which oysters, clams or other shellfish are taken to be distributed or sold for use as food, for the purpose of ascertaining the sanitary conditions of such oyster and clam beds and other places. As a result of those inspections, the Department has determined that certain waters do not meet the standards for their classification as "Special Restricted" set forth in the Shellfish Growing Water Classification rules at N.J.A.C. 7:12. Accordingly, pursuant to N.J.A.C. 7:12-1.5(b) and the statutory authority granted the Department of Environmental Protection at N.J.S.A. 58:24-2 to ensure that the public health is not at risk from the consumption of shellfish that may have been subjected to pollution or other condition that may render the shellfish dangerous to health, I hereby immediately suspend the harvest of shellfish from the following waters, as further described below:

KeyPort Harbor
Atlantic Highlands
Glimmer Glass
Lake Louise
Tuckerton Creek
Maurice River

Each of the above waters is classified as "Special Restricted," in accordance with N.J.A.C. 7:12-1.4. To be classified as Special Restricted, the bacteriological quality of water samples at every sample station in the growing area shall not exceed the fecal coliform median or geometric mean of 88 CFU per 100 ml and the estimated 90th percentile shall not exceed 163 CFU per 100 ml. See N.J.A.C. 7:12-1.4(a), incorporating by reference the National Shellfish Sanitation Program (NSSP), Guide for the Control of Molluscan Shellfish, 2011 Revision, available at the U.S. Food and Drug Administration website, www.fda.gov/Food/GuidanceRegulation/20FederalStateFoodPrograms/ucm2006754.htm. Water sampling data collected by the Department over the past four years indicate that the water samples from the waters listed above do not consistently meet the fecal coliform standards for Special Restricted.

The suspension of harvest in each of the above-referenced waters shall take effect immediately and continue pending the establishment by rulemaking of the appropriate classification and boundaries of the waters so classified, as provided by N.J.A.C. 7:12-1.5, or until further determination by the Department that the particular area of water subject to the suspension meets the standards for its current Special Restricted classification.

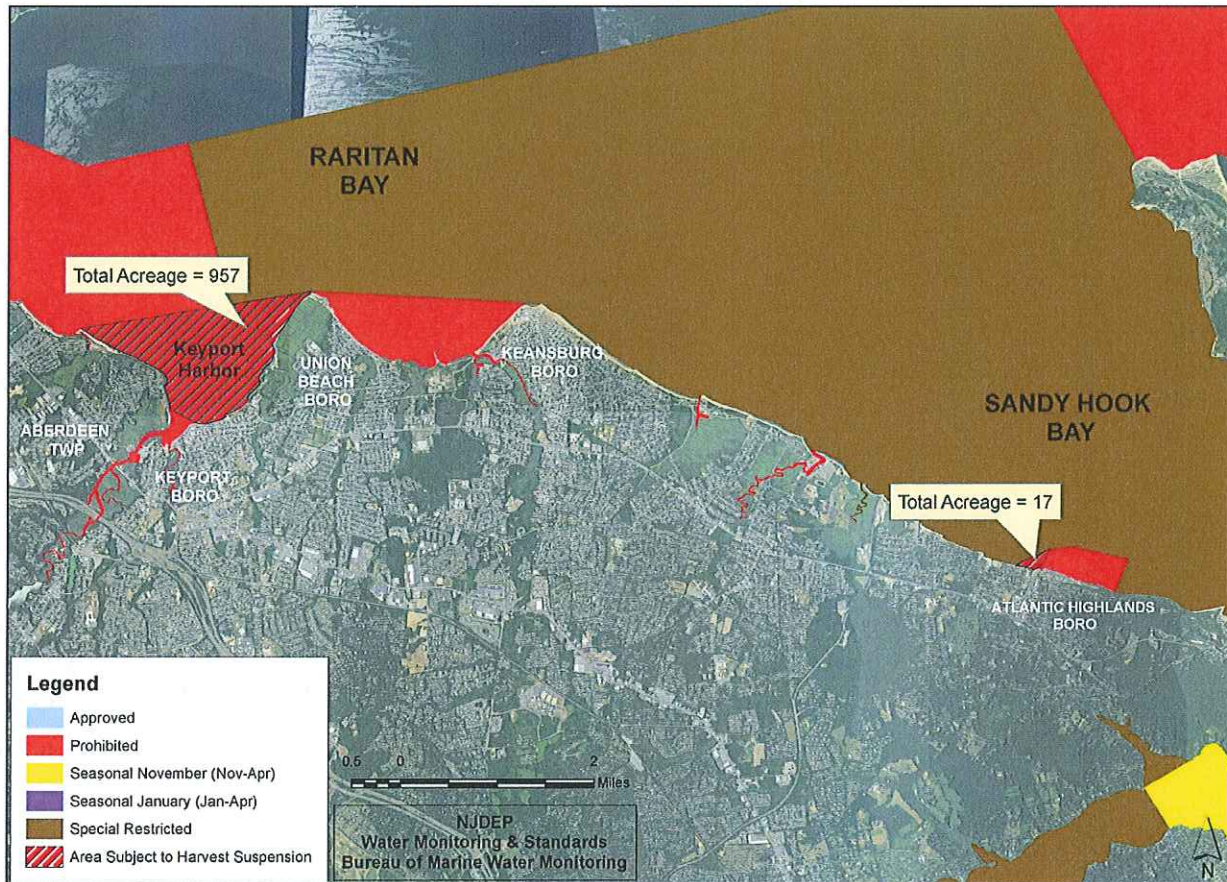
Keyport Harbor - 957.0 acres

All those waters of the Raritan Bay, Raritan River and Arthur Kill (and tributaries) lying south and west of the New Jersey/New York boundary and lying west of a line beginning on the northernmost point of land on Conaskonk Point, Union Beach, New Jersey (latitude 40 degrees 27 minutes 31.99 seconds N., longitude 74 degrees 10 minutes 44.50 seconds W.), and bearing approximately 261 degrees T to a point of land at latitude 40 degrees 27 minutes 12 seconds N., longitude 74 degrees 13 minutes 27.98 seconds W., until it intersects a line at latitude 40 degrees 27 minutes 24.78 seconds N., longitude 74 degrees 11 minutes 43.86 from the tank between Keyport and Union Beach, New Jersey at latitude 40 degrees 26 minutes 31.16 seconds N., longitude 74 degrees 11 minutes 25.18 seconds W., bearing approximately 345 degrees T to the Iso G 6 sec 80 foot tower at latitude 40 degrees 30 minutes 27.82 seconds N., longitude 74 degrees 12 minutes 47.94 seconds W., at Red Bank, Staten Island, New York, until it intersects the New York-New Jersey boundary at latitude 40 degrees 28 minutes 51.4 seconds N., longitude 74 degrees 12 minutes 13 seconds W., where this line terminates.

Atlantic Highlands Municipal Harbor (Special Restricted to Prohibited) - 17.4 acres

All those waters enclosed by a line beginning at a point of land (off Harbor Court, Borough of Atlantic Highlands), at coordinates latitude 40 degrees 25 minutes 3.3 seconds N., and longitude 74 degrees 2 minutes 29.9 seconds W. then bearing approximately 64 degrees T in northeasterly direction to the northernmost extent of the old ferry pier (located on First Avenue, Borough of Atlantic Highlands) and then connecting this structure with the breakwater (this breakwater or rock pile forms the northern boundary of the municipal harbor) and following the northern side of the breakwater in an easterly direction to the breakwater's easternmost extent, where it is marked by the navigation marker designated as 'Flashing light 4sec 29ft 8M' (F1 4sec 29ft 8M) and then bearing approximately 201 degrees T to the mainland where this line terminates.

Suspension of Shellfish Harvest (Raritan Bay & Sandy Hook Bay)



Glimmer Glass - 99.4 acres

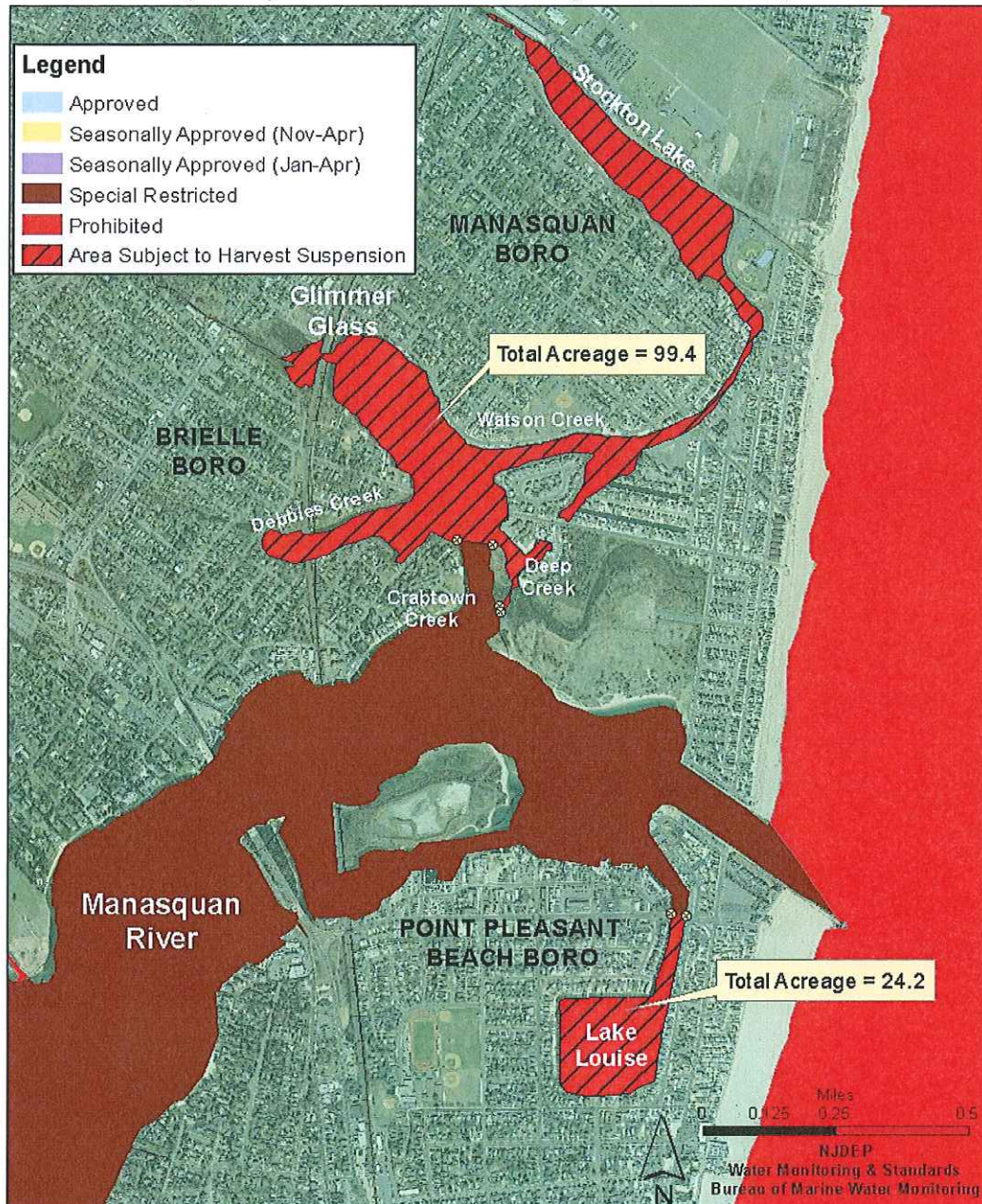
All of the waters of The Glimmer Glass region north of a line starting at a point with coordinates of latitude 40 degrees 6 minutes 38.67 seconds N., longitude 74 degrees 2 minutes 38.34 seconds W then crossing Crabtown Creek to a point with coordinates of latitude 40 degrees 6 minutes 39.14 seconds N., longitude 74 degrees 2 minutes 42.98 seconds W, then following the shoreline of Debbies Creek, Glimmer Glass, Watson Creek, Stockton Lake, and Deep Creek to a point with coordinates of latitude 40 degrees 6 minutes 32.02 seconds N., longitude 74 degrees 2 minutes 37.42 seconds W then crossing Deep Creek to a point with coordinates of latitude 40 degrees 6 minutes 32.67 seconds N., longitude 74 degrees 2 minutes 37.58 seconds W, then following the western shoreline of a small unnamed island to its point of origin and terminating.

Lake Louise - 24.2 acres

All of the waters of Lake Louise located south of the northern side of the Broadway Bridge, specifically south of a line from a point with coordinates of latitude 40 degrees 6 minutes 2.53 seconds N., longitude 74 degrees 2 minutes 15.60 seconds W then crossing the Lake Louise channel in an easterly direction to a point with coordinates of latitude 40 degrees 6 minutes 2.26 seconds N., longitude 74 degrees 2 minutes 13.76 seconds W.

Suspension of Shellfish Harvest

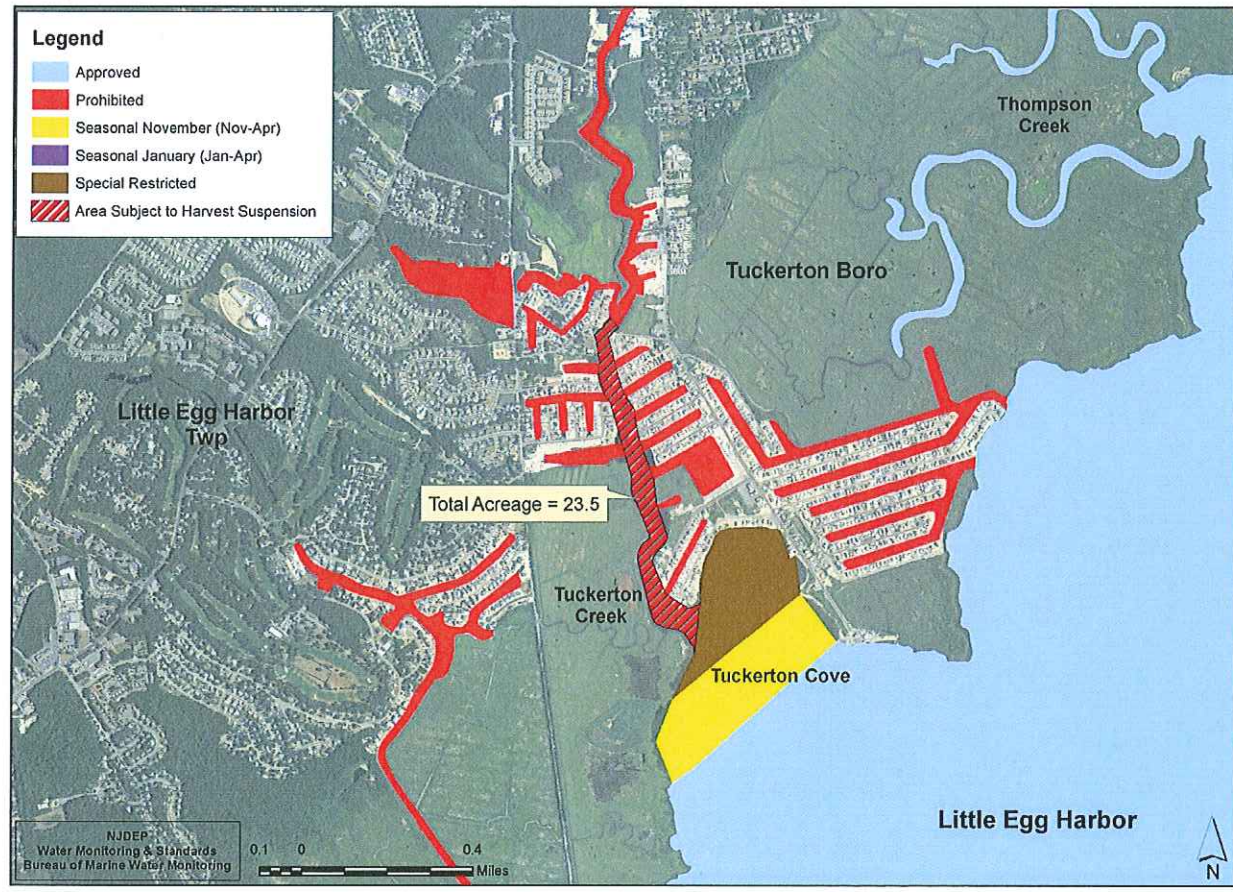
(Manasquan River: Glimmer Glass Region and Lake Louise)



Tuckerton Creek - 23.5 acres

The waters of Tuckerton Creek and tributaries north of a line beginning at a point on the southeastern bank of Tuckerton Creek, southeast of Parker Rd. with coordinates of latitude 39 degrees 34 minutes 40.7 seconds N., and longitude 74 degrees 20 minutes 14.9 seconds W., and then bearing 186 degrees T for 0.10 nautical miles to a point on the southwestern bank of Tuckerton Creek with coordinates of latitude 39 degrees 34 minutes 34.7 seconds N., and longitude 74 degrees 20 minutes 15.8 seconds W.

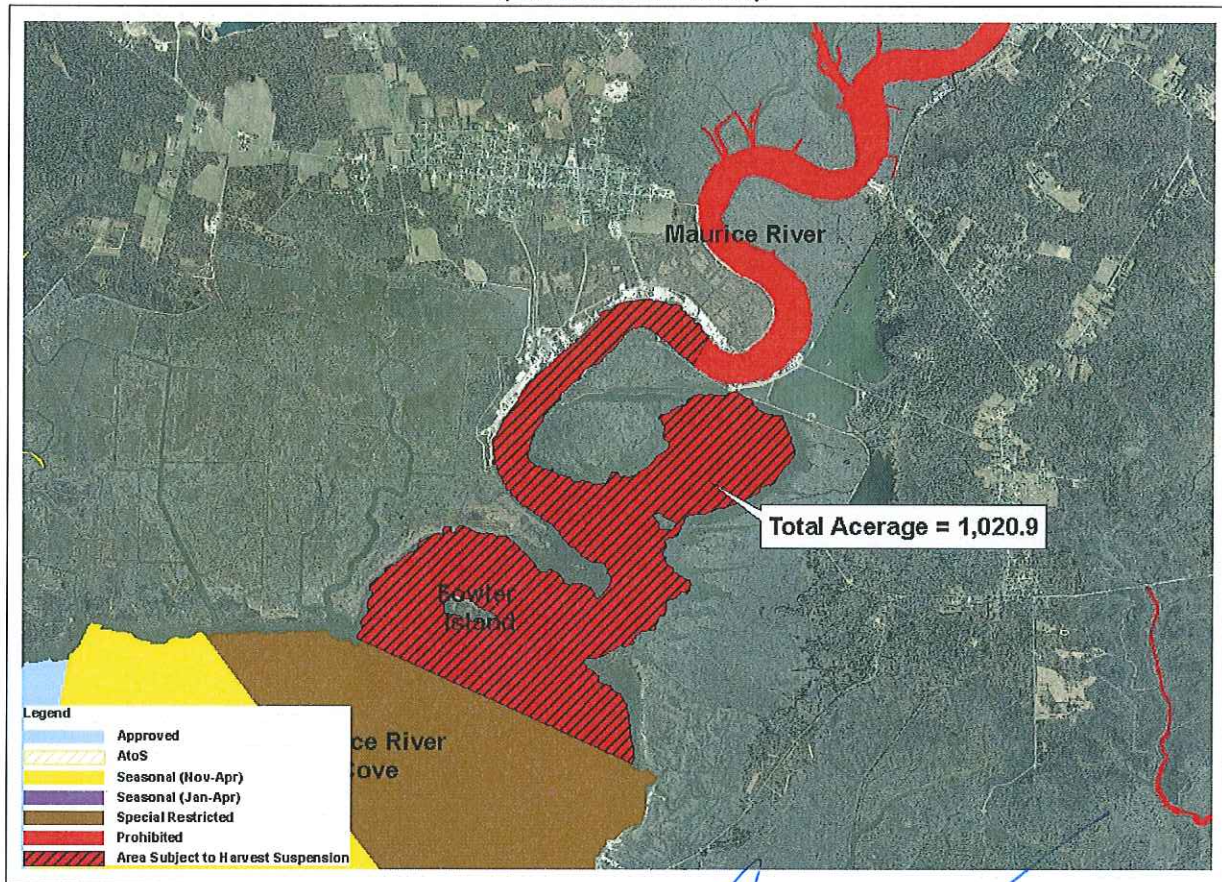
Suspension of Shellfish Harvest (Tuckerton Creek)



Maurice River - 1,020.9 acres

All of the Maurice River and tributaries upstream of a line from a point along the west shore of the river south of Bivalve at Latitude N 39 degrees 12' 51.2", Longitude W -75 degrees 2' 55.9" [the end of Berry Avenue (Shellpile)] and bearing approximately [214] 115 degrees T across the river to a [Department maintained Marker] point along the east shore at Latitude N 39 degrees 12' 21.4 seconds Longitude W -75 degrees 01' 27.9" and terminating.

**Suspension of Shellfish Harvest
(Lower Maurice River)**



DATE: _____

4/9/2014

Bob Martin, Commissioner