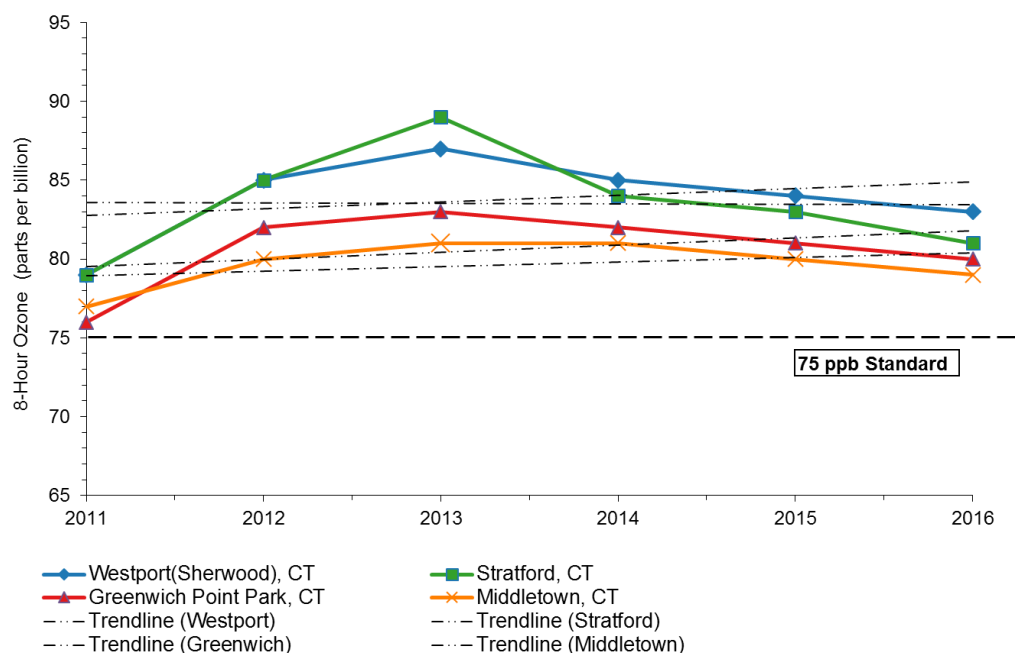


Appendix 2-2:
Air Quality Monitoring Graphs: Controlling Monitors

Figure A2-2.1: 8-hour Ozone Design Values 2011-2016
Top 4 Monitors Exceeding 75 ppb Ozone NAAQS
Northern NJ-NY-CT Nonattainment Area*



* Monitoring values exclude May 25 and 26, 2016 exceptional event data for Westport, CT.

Figure A2-2.2: 8-hour Ozone Design Values 2011-2016
Next 4 Monitors Exceeding 75 ppb Ozone NAAQS
Northern NJ-NY-CT Nonattainment Area

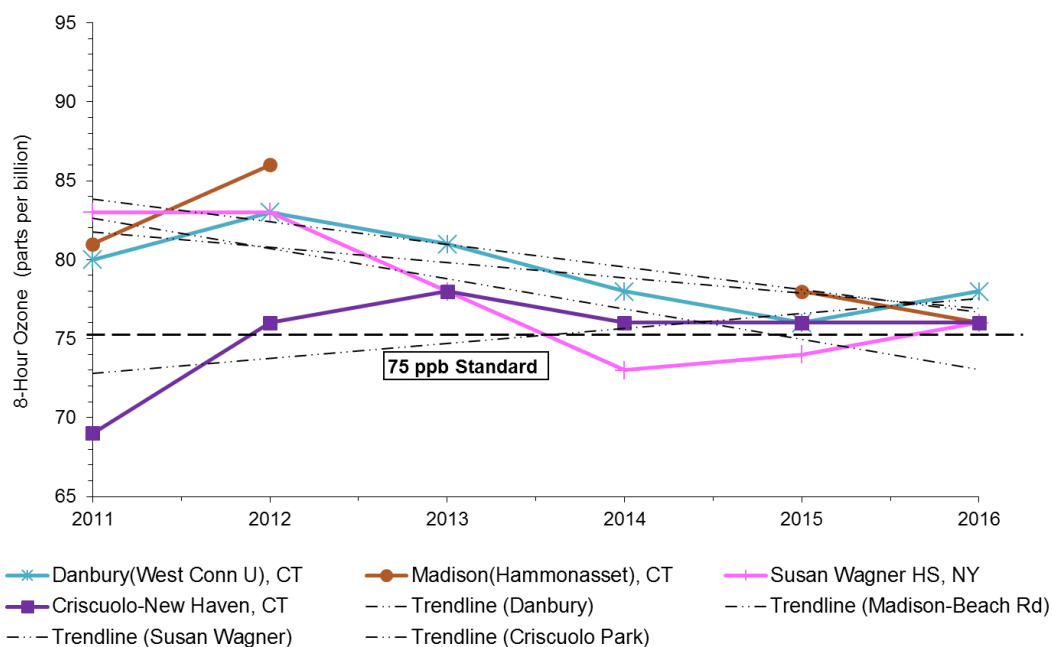
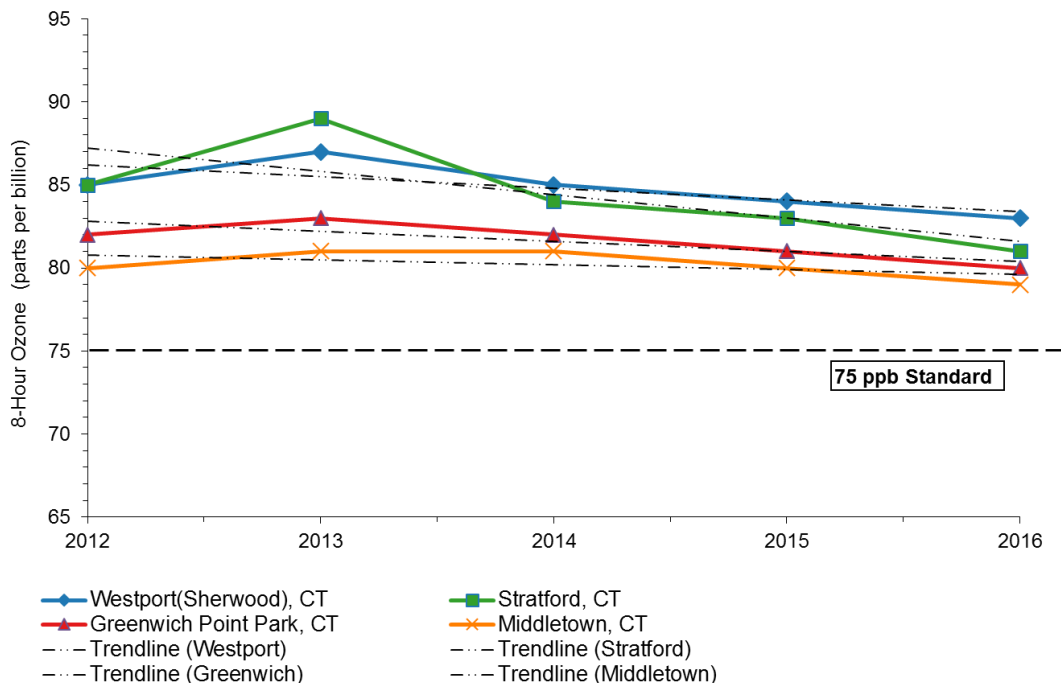


Figure A2-2.3: 8-hour Ozone Design Values 2012-2016
Top 4 Monitors Exceeding 75 ppb Ozone NAAQS
Northern NJ-NY-CT Nonattainment Area*



* Monitoring values exclude May 25 and 26, 2016 exceptional event data for Westport, CT.

Figure A2-2.4: 8-hour Ozone Design Values 2012-2016
Next 4 Monitors Exceeding 75 ppb Ozone NAAQS
Northern NJ-NY-CT Nonattainment Area

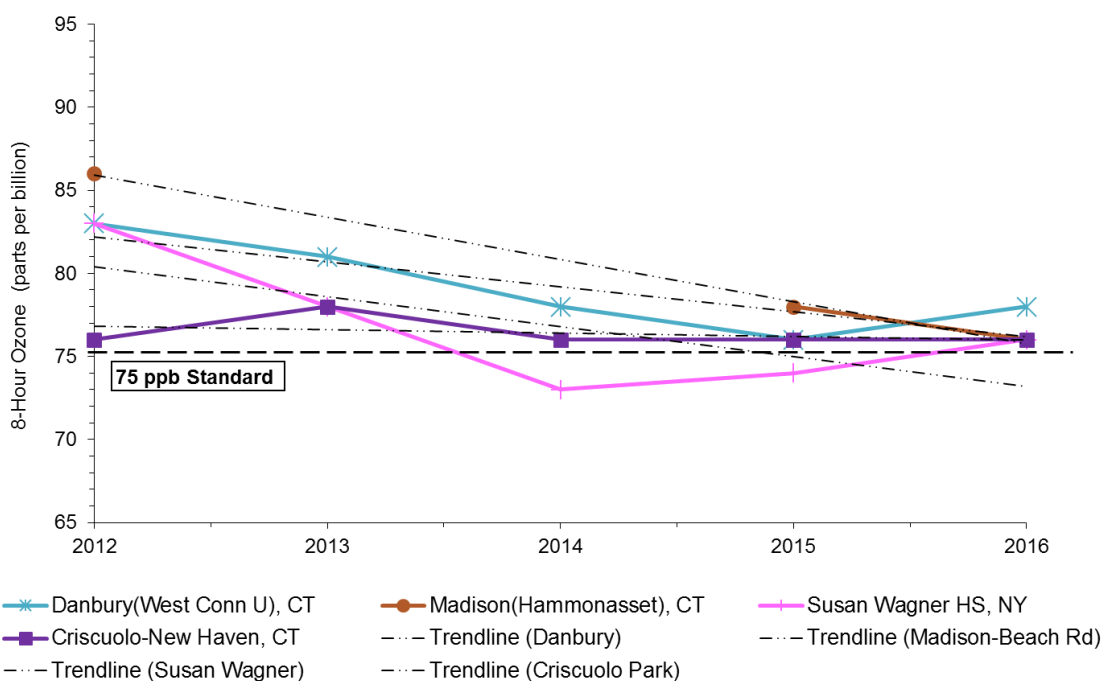
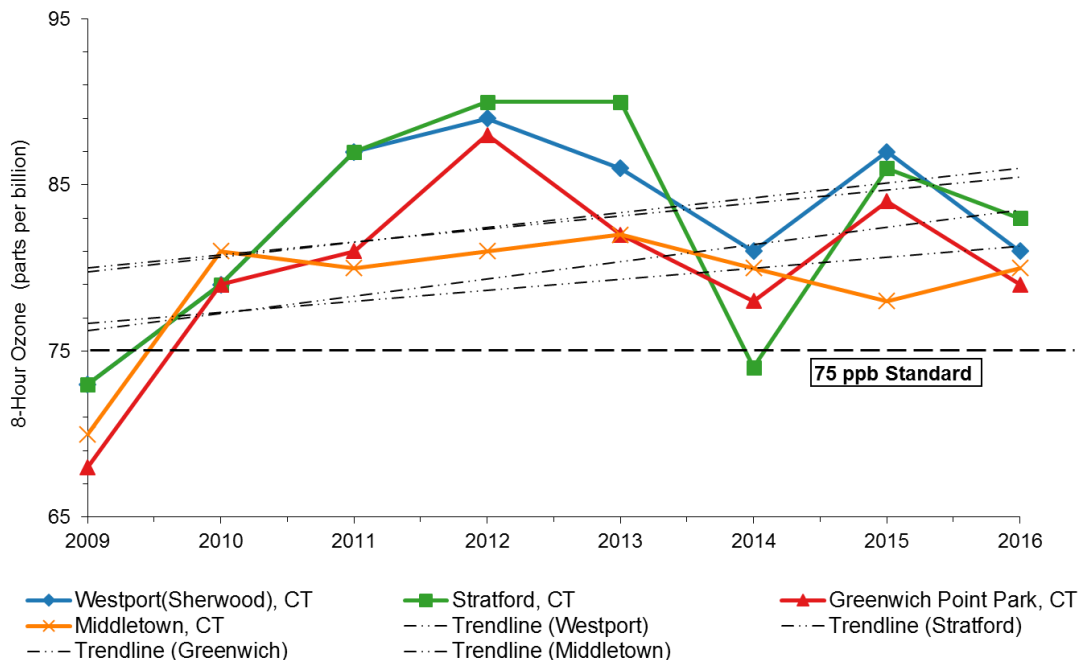


Figure A2-2.5: 8-hour Ozone 4th Highest Daily 8-Hour Maximum 2009-2016
Top 4 Monitors Exceeding 75 ppb Ozone NAAQS
Northern NJ-NY-CT Nonattainment Area*



* Monitoring values exclude May 25 and 26, 2016 exceptional event data for Westport, CT.

Figure A2-2.6: 8-hour Ozone 4th Highest Daily 8-Hour Maximum 2009-2016
Next 4 Monitors Exceeding 75 ppb Ozone NAAQS
Northern NJ-NY-CT Nonattainment Area

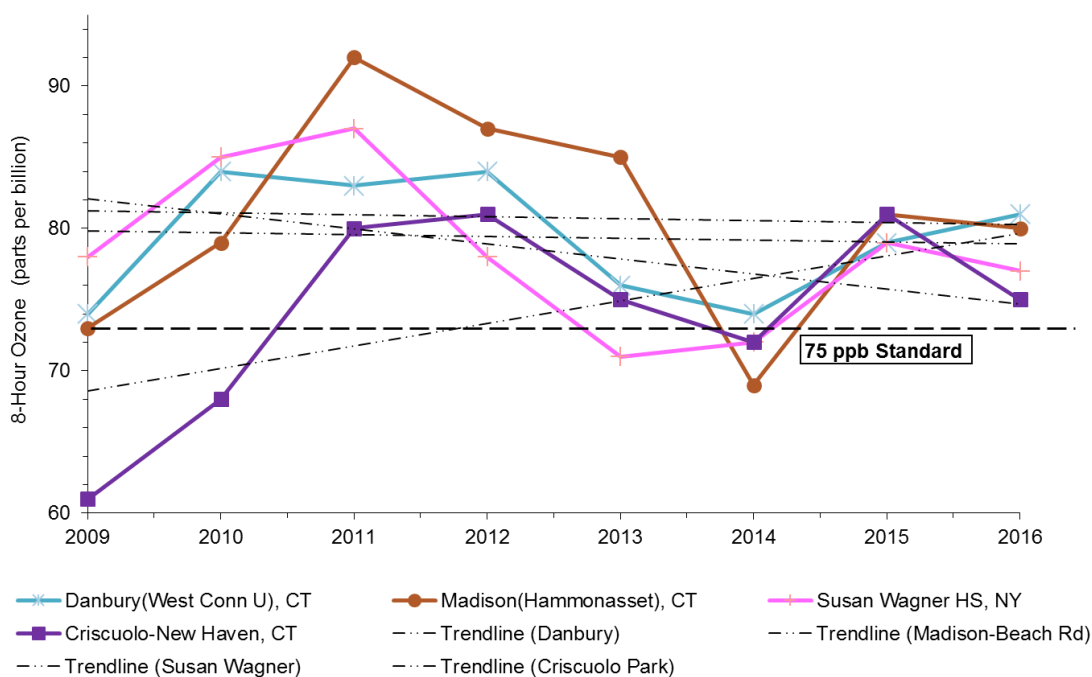
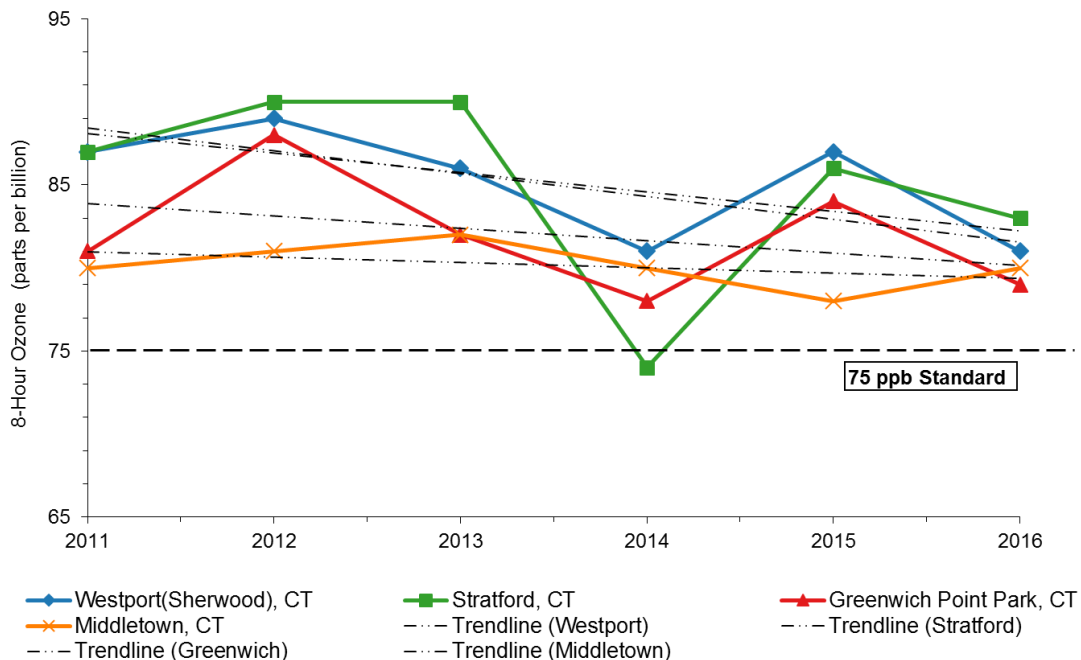


Figure A2-2.7: 8-hour Ozone 4th Highest Daily 8-Hour Maximum 2011-2016
Top 4 Monitors Exceeding 75 ppb Ozone NAAQS
Northern NJ-NY-CT Nonattainment Area*



* Monitoring values exclude May 25 and 26, 2016 exceptional event data for Westport, CT.

Figure A2-2.8: 8-hour Ozone 4th Highest Daily 8-Hour Maximum 2011-2016
Next 4 Monitors Exceeding 75 ppb Ozone NAAQS
Northern NJ-NY-CT Nonattainment Area

